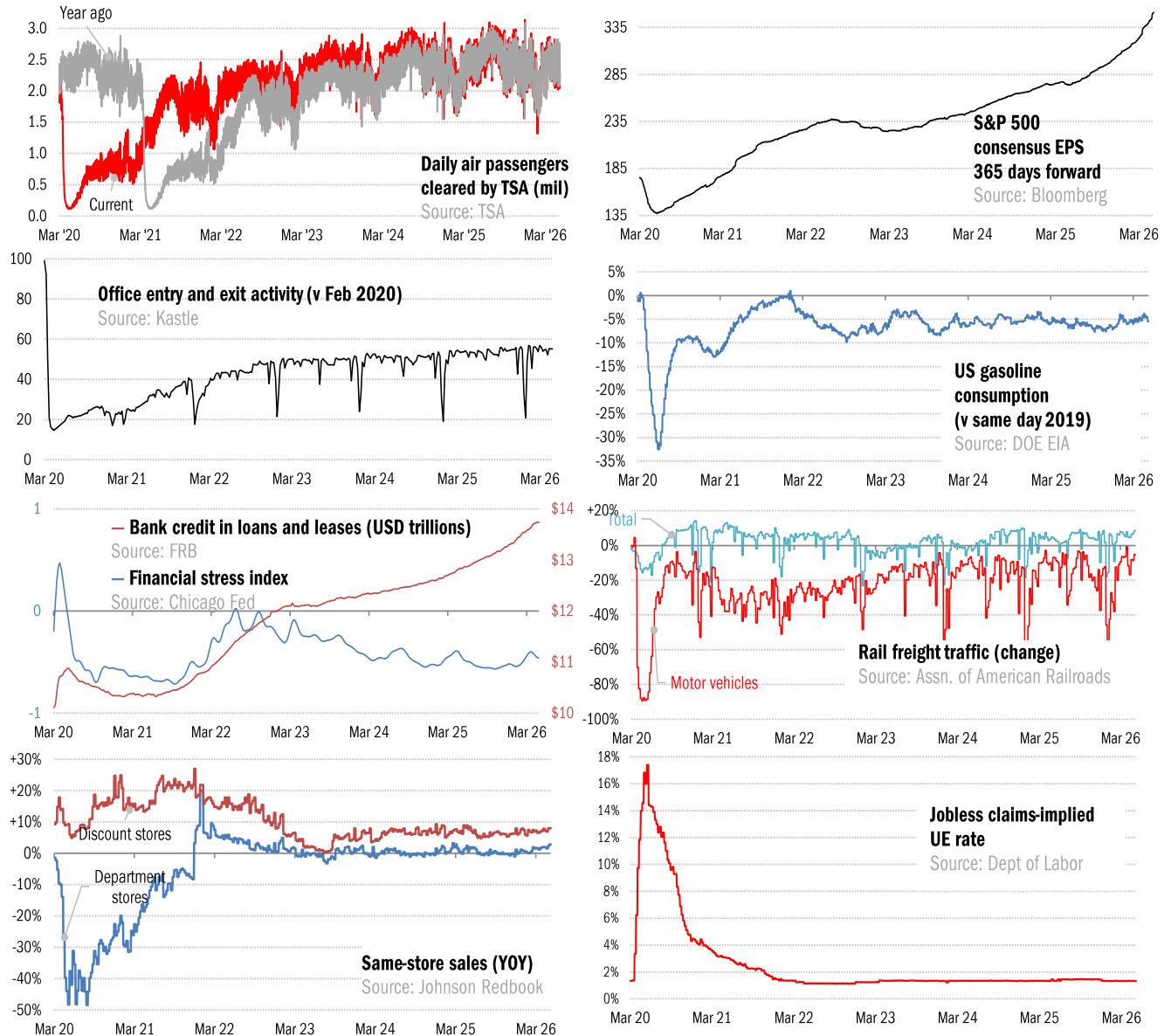


## Data Insights: High-Frequency Data Monitor

Thursday, May 7, 2026

### The US high-frequency macro data dashboard

(state level and other detail in subsequent charts)



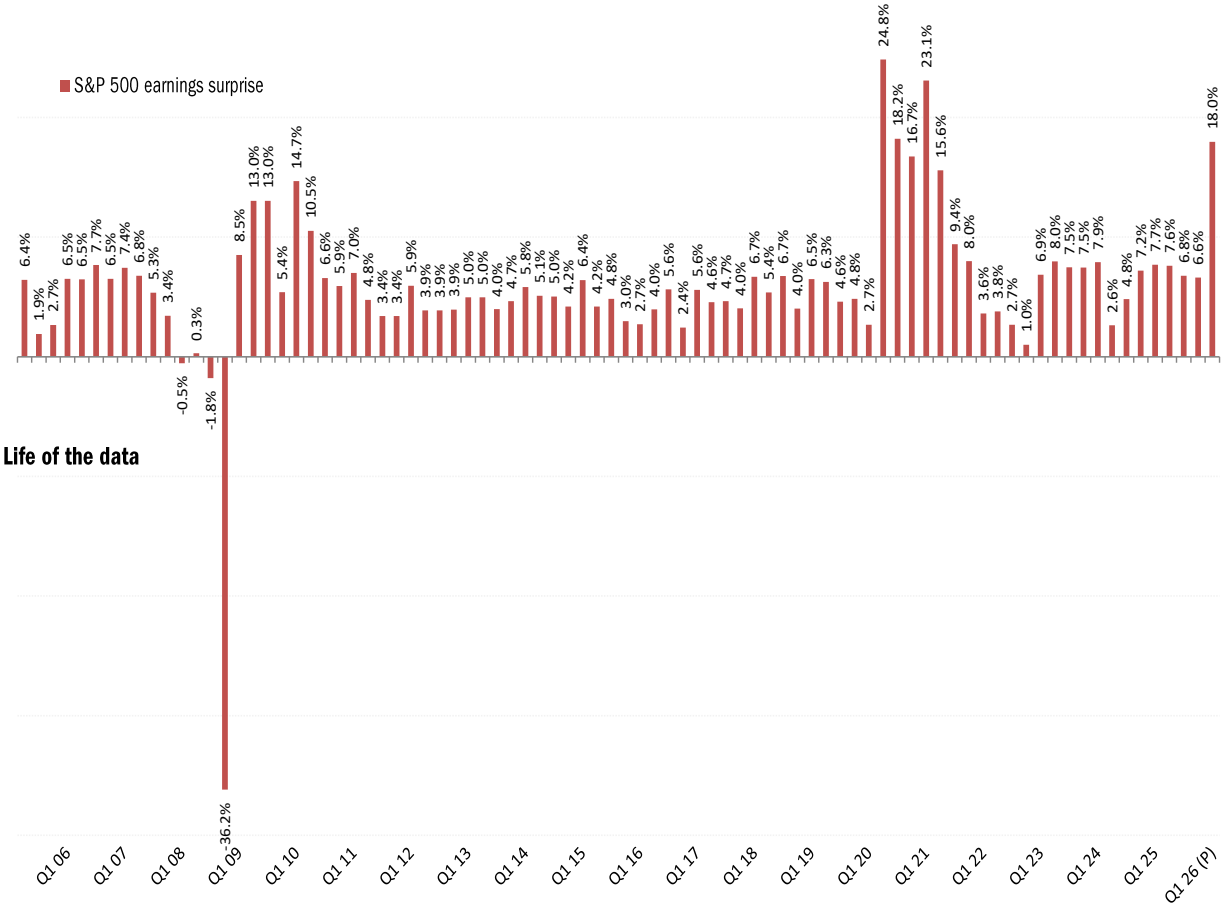
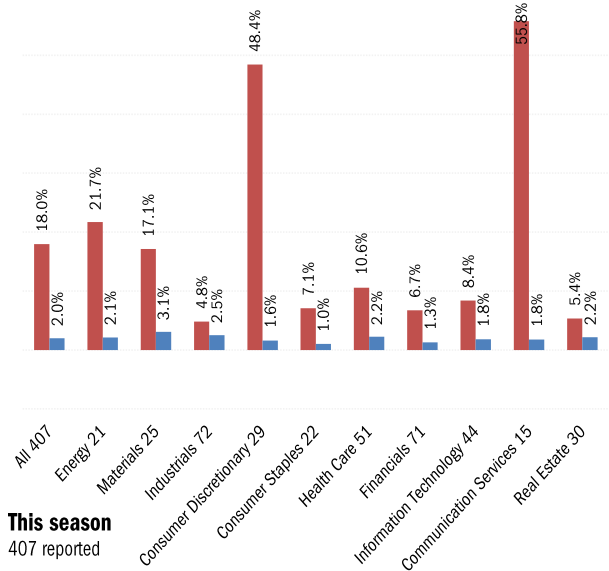
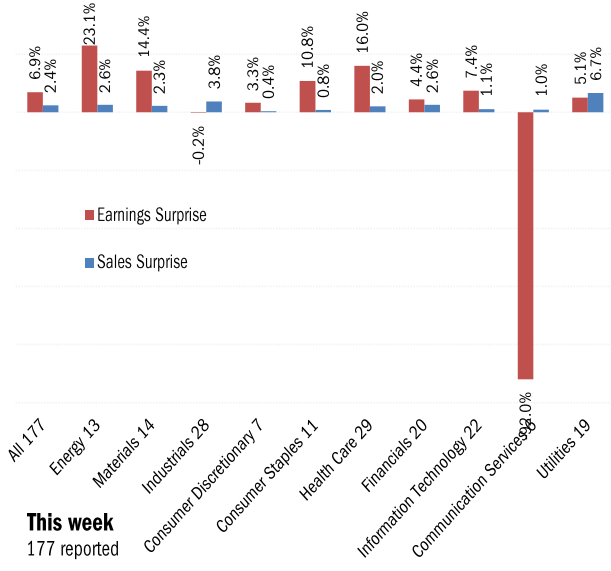
Source: As indicated, TrendMacro calculations

#### For more information contact us:

Donald Luskin: 214 550 2020 [don@trendmacro.com](mailto:don@trendmacro.com)

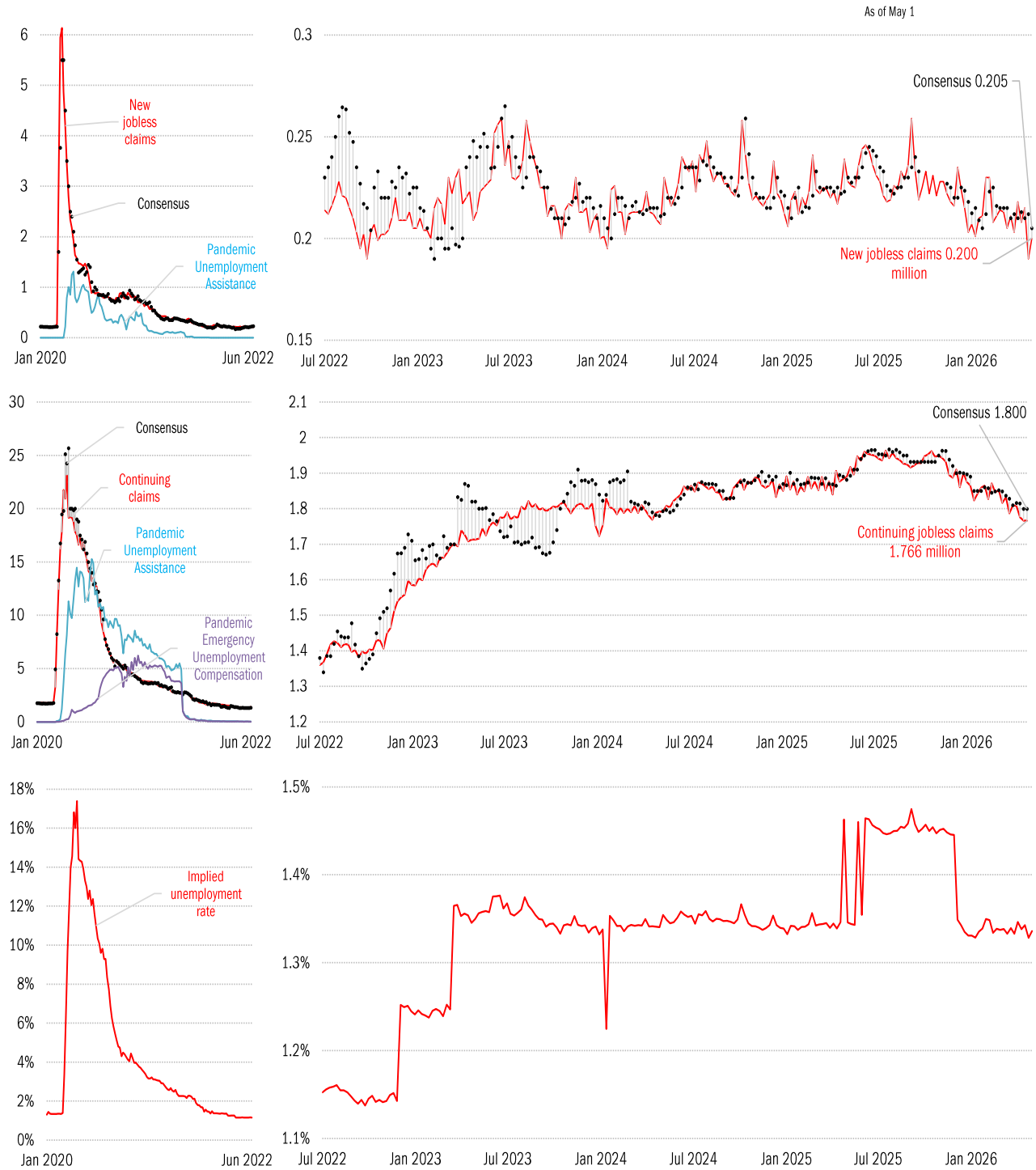
Thomas Demas: 704 552 3625 [tdemas@trendmacro.com](mailto:tdemas@trendmacro.com)

# S&P 500 earnings and sales surprise monitor



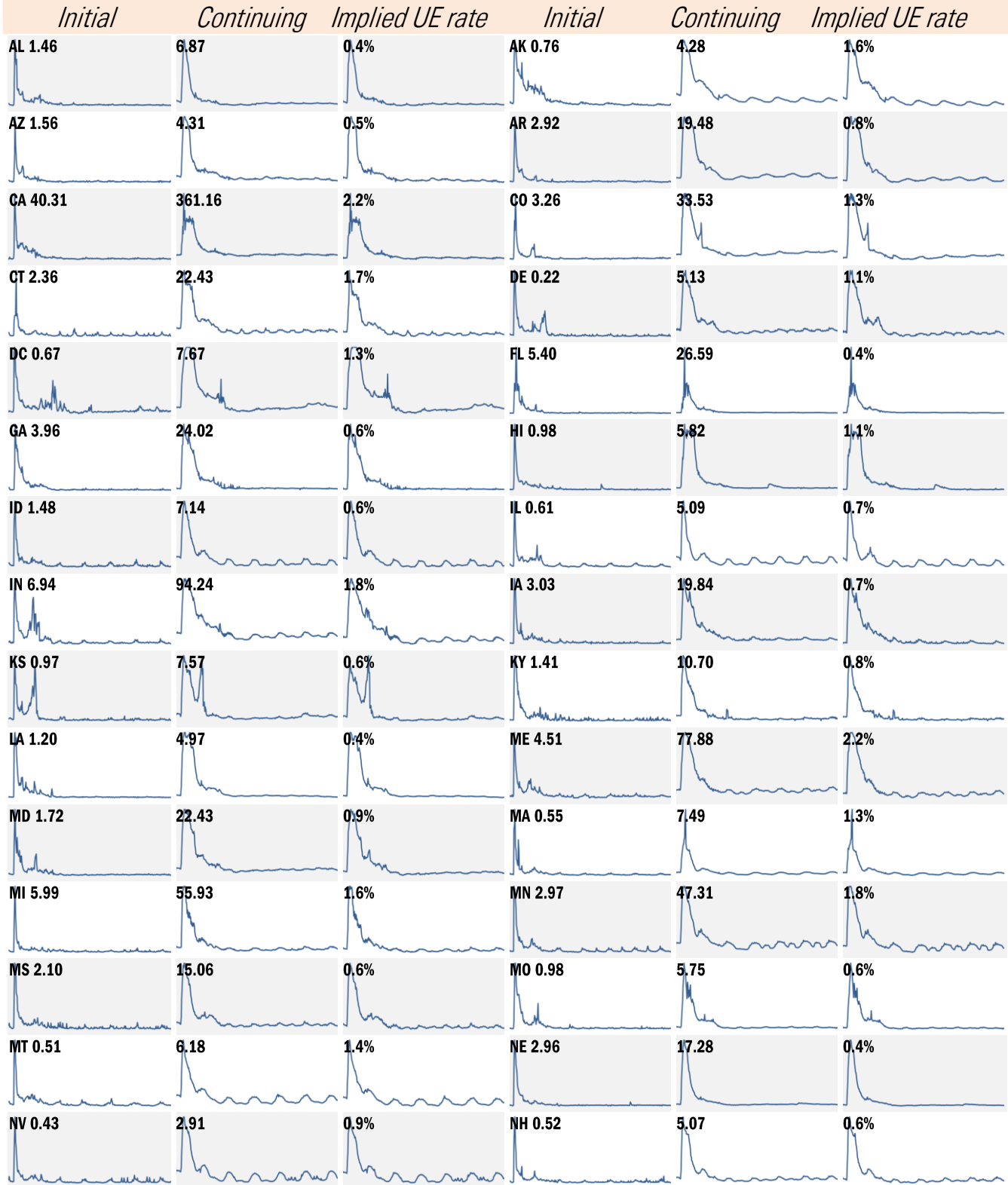
Source: Bloomberg, TrendMacro calculations

# High-frequency view of the US labor market: weekly unemployment claims (millions)



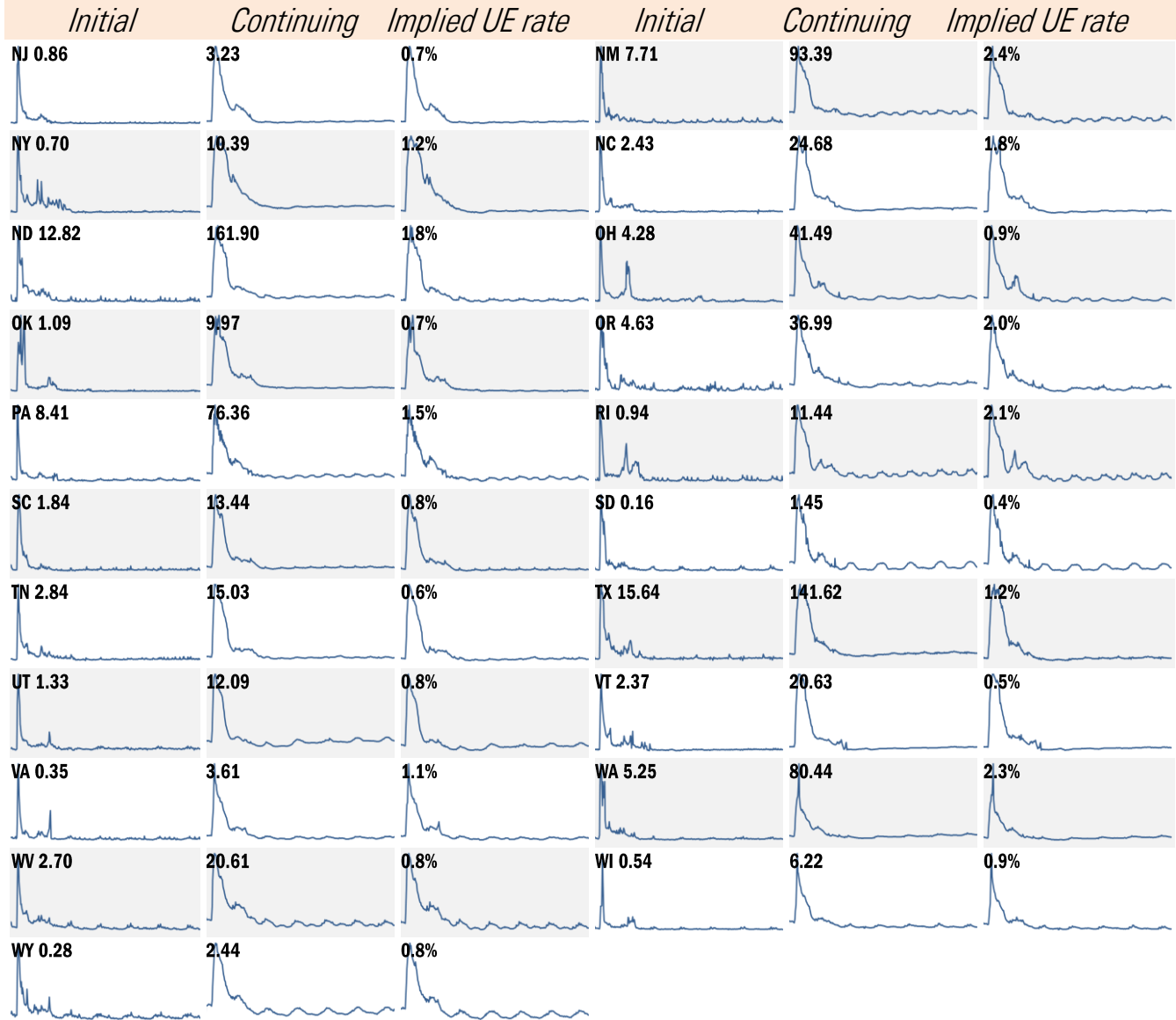
Source: Department of Labor, Bloomberg, TrendMacro calculations

# State by state unemployment insurance claims (thousands) January 2020 to present



Source: Department of Labor, TrendMacro calculations

# State by state unemployment insurance claims (thousands) January 2020 to present



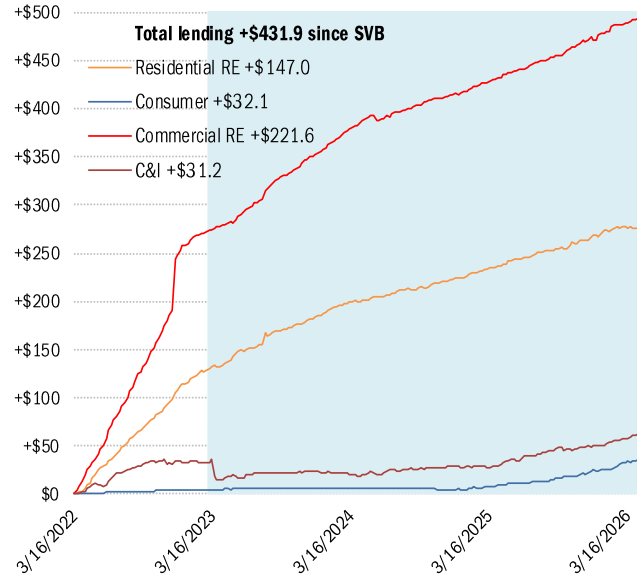
Source: Department of Labor, TrendMacro calculations

# Asset and liability dynamics in US commercial banks

■ Post-SVB failure

Cumulative change in assets (USD billions)

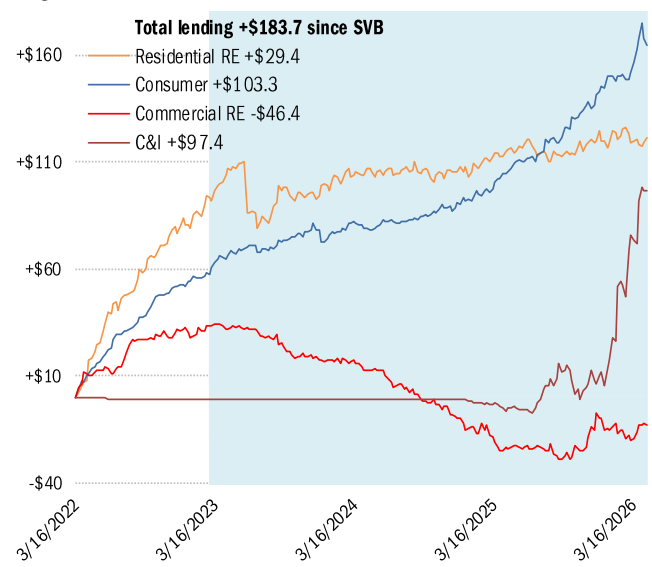
**Small banks**



Cumulative change in assets (USD billions)

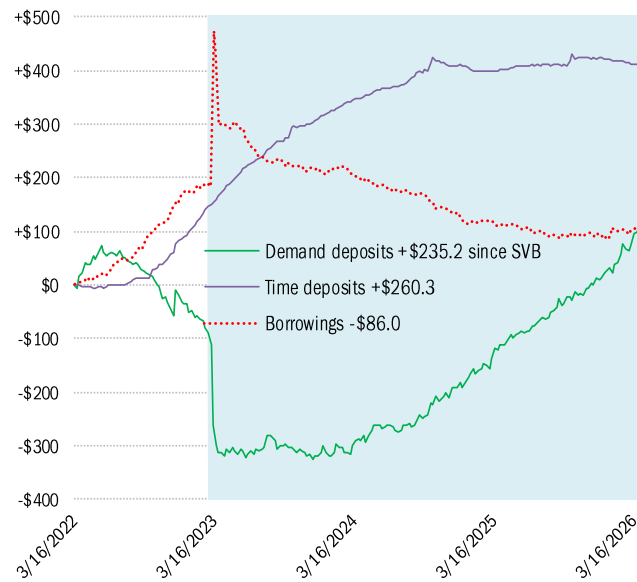
As of Apr 22

**Large banks**



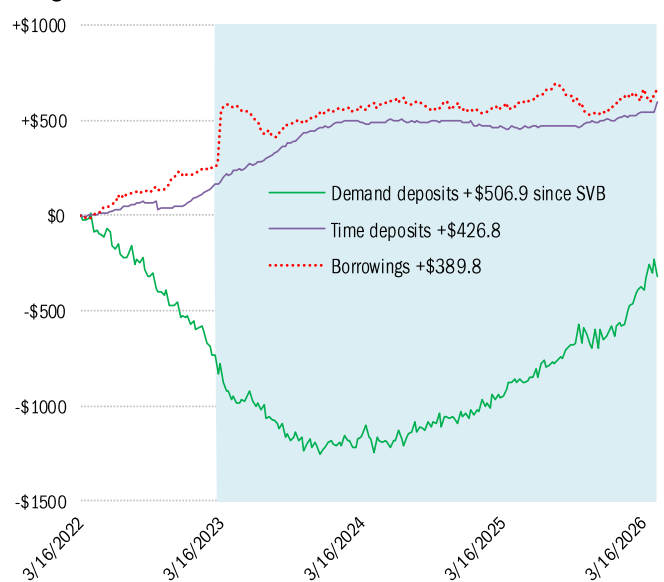
Cumulative change in liabilities (USD billions)

**Small banks**



Cumulative change in liabilities (USD billions)

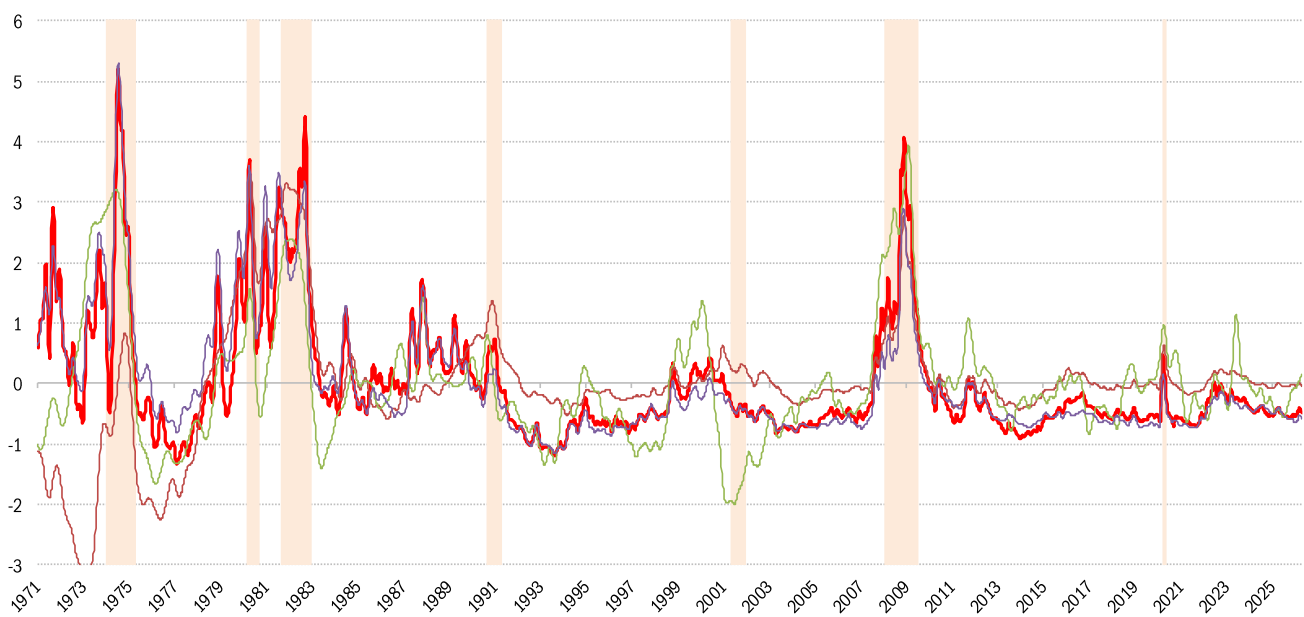
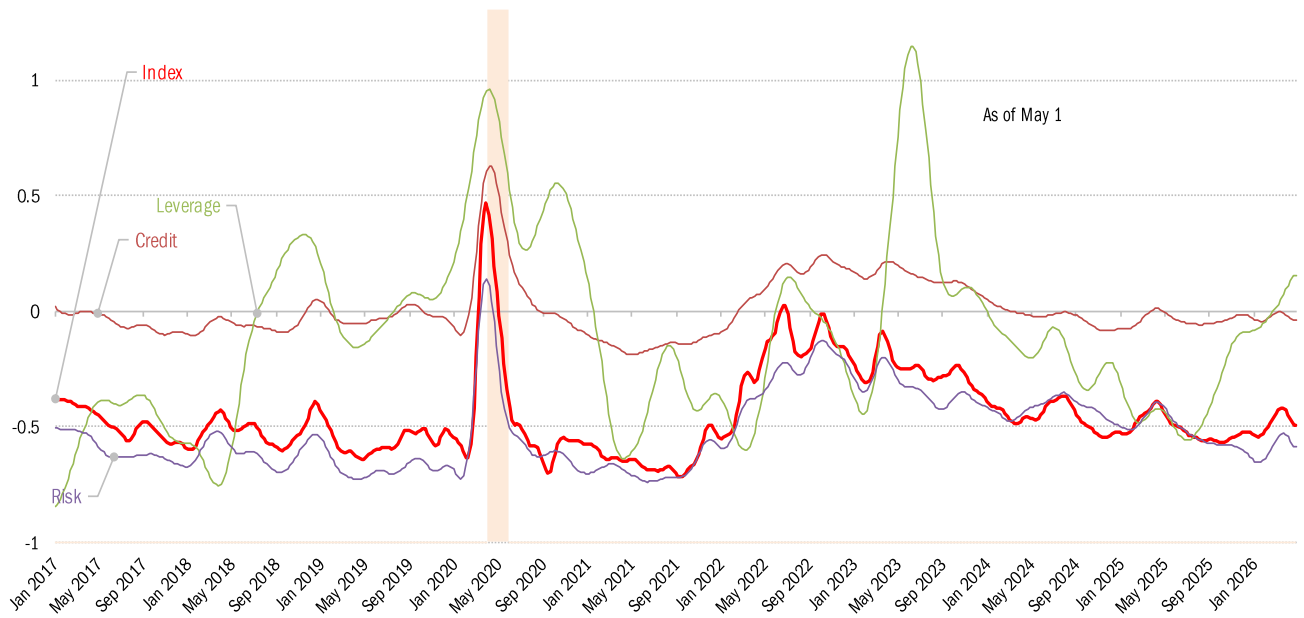
**Large banks**



Source: [Federal Reserve Board Report H.8](#), TrendMacro calculations

# House of straw or house of brick? Chicago Fed Financial Conditions Index

Higher values: tight conditions    Lower values: loose conditions

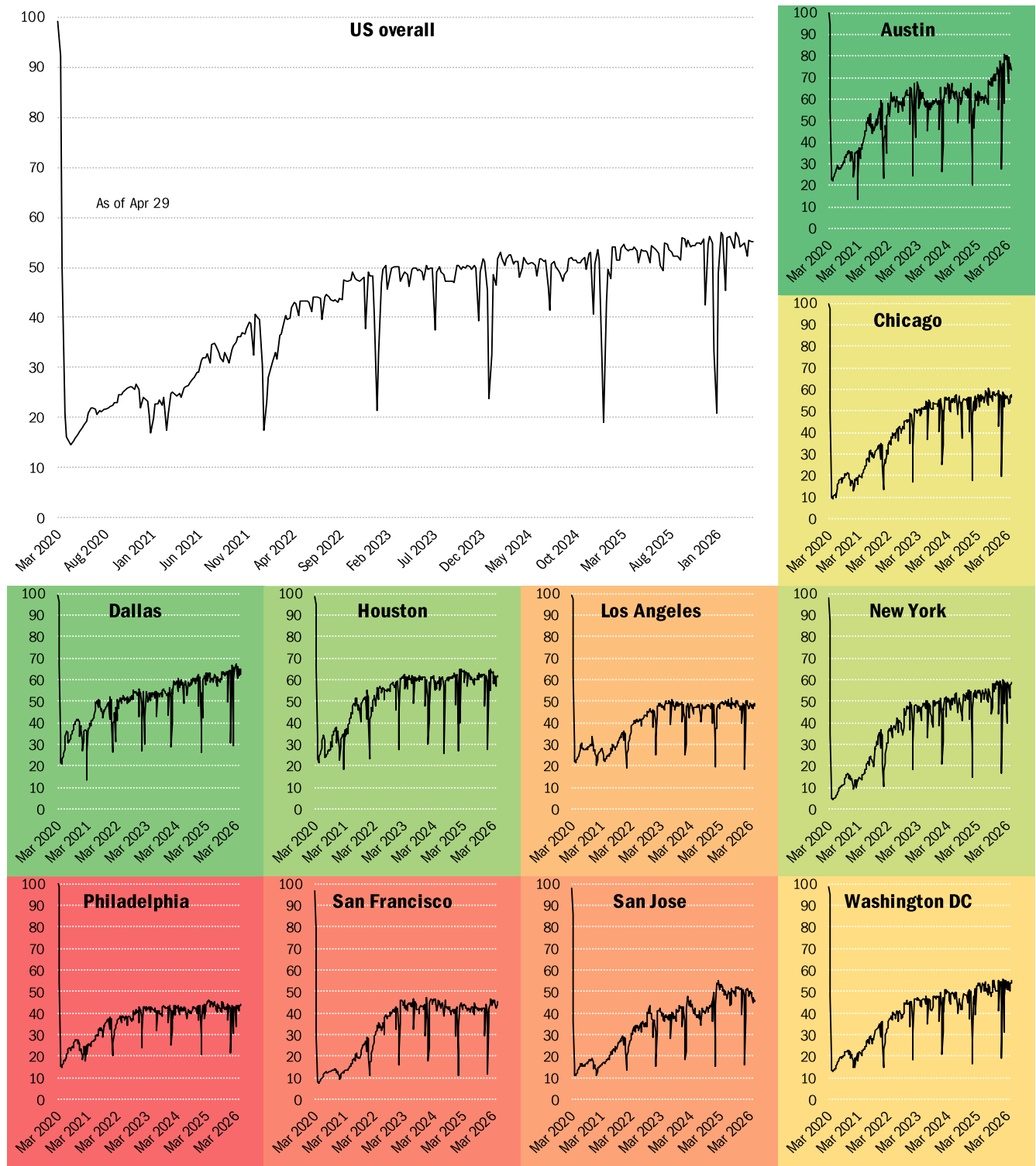


Source: [Chicago Fed](#), TrendMacro calculations

# Returning to the American office

■ Most utilized ■ Least utilized

Indices of office capacity utilization based on weekly door-security access data (NSA)

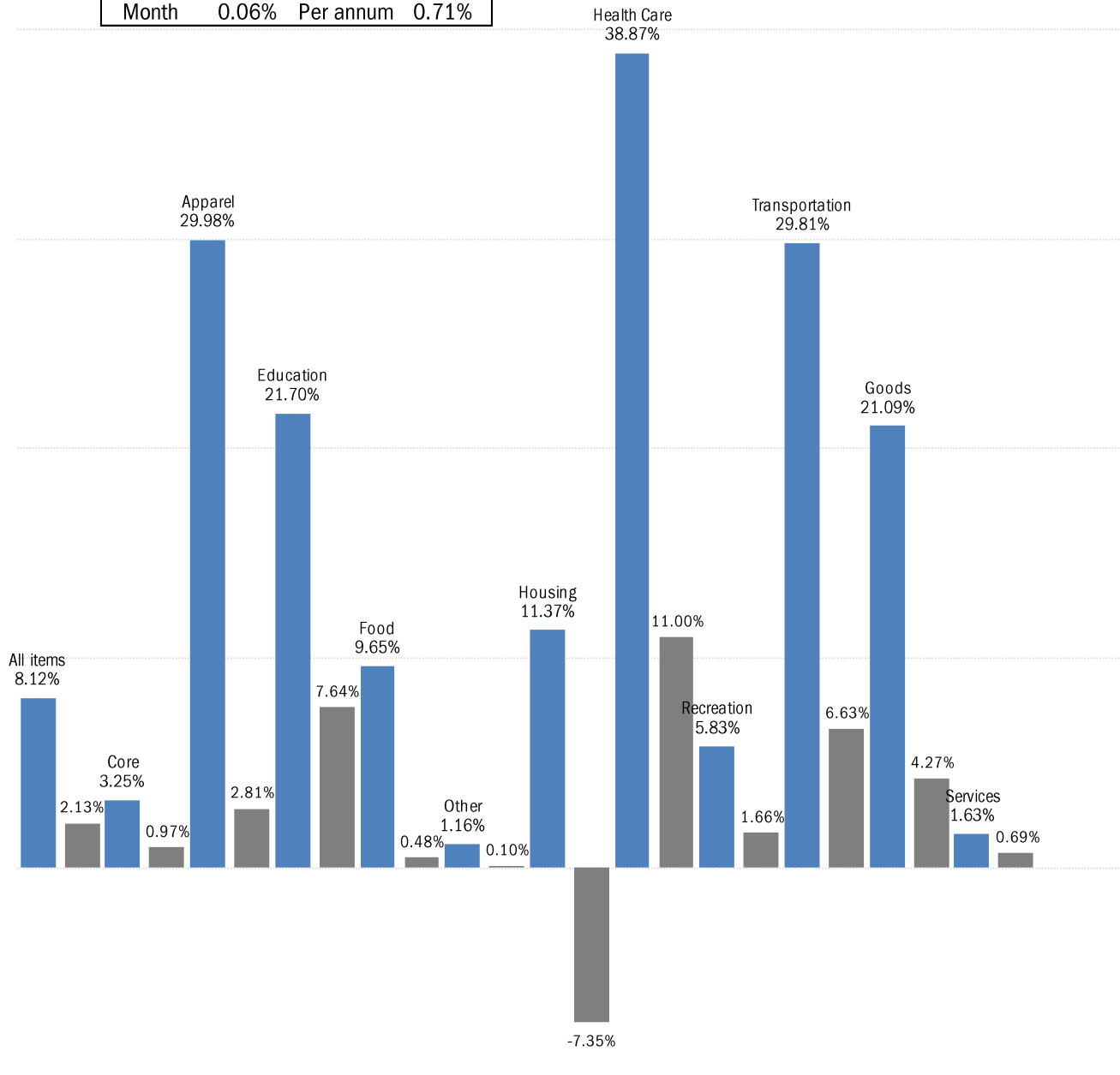


Source: [Kastle Systems](#), TrendMacro calculations

# Inflation in real time, based on Truflation's daily telemetry

■ Trailing 90-day consumer price inflation, annual rate ■ Trailing 365-day

May so far			
Headline			
Month	1.22%	Per annum	15.92%
Core			
Month	0.06%	Per annum	0.71%



Source: [Truflation](#), TrendMacro calculations