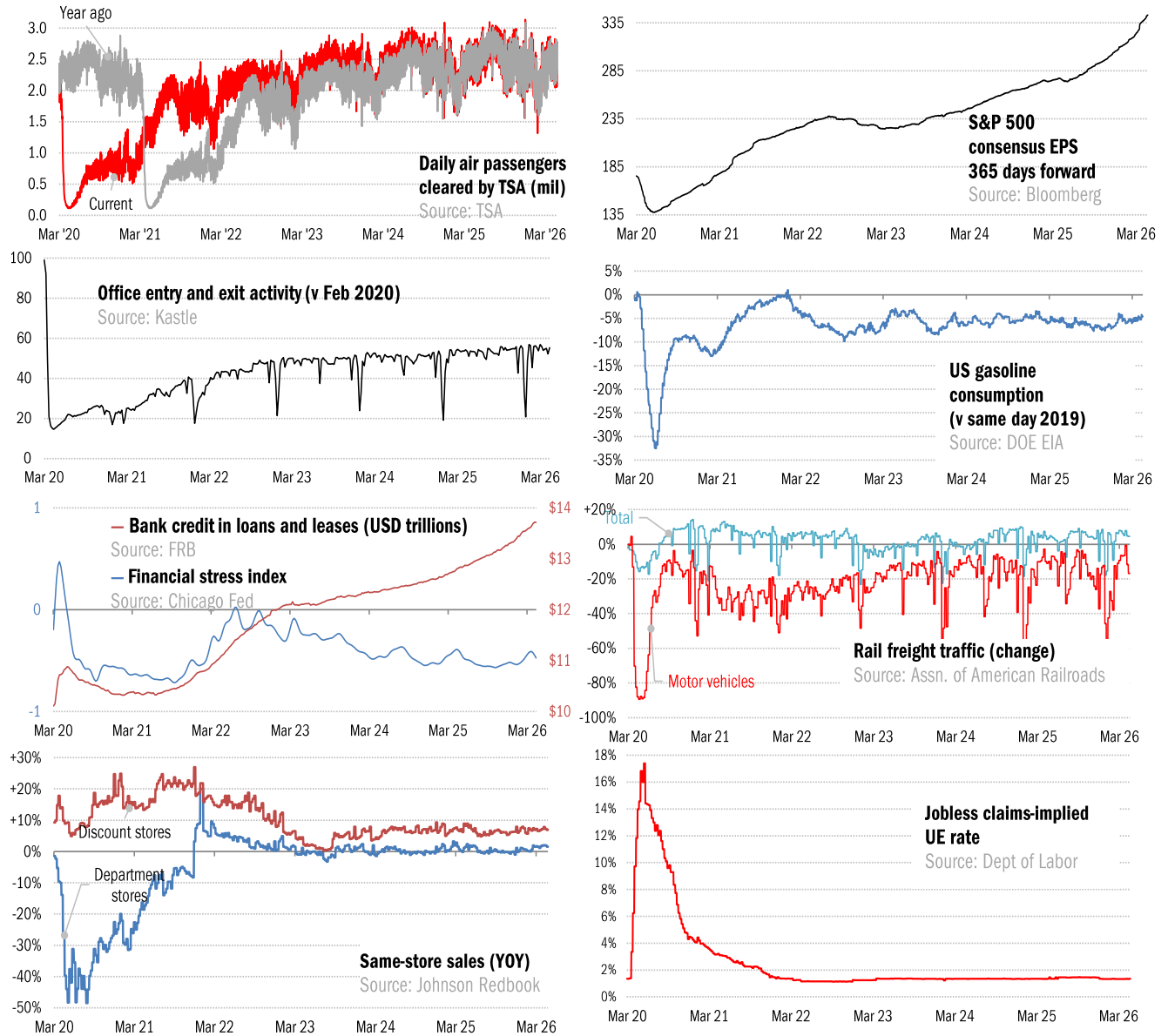


Data Insights: High-Frequency Data Monitor

Thursday, April 23, 2026

The US high-frequency macro data dashboard

(state level and other detail in subsequent charts)



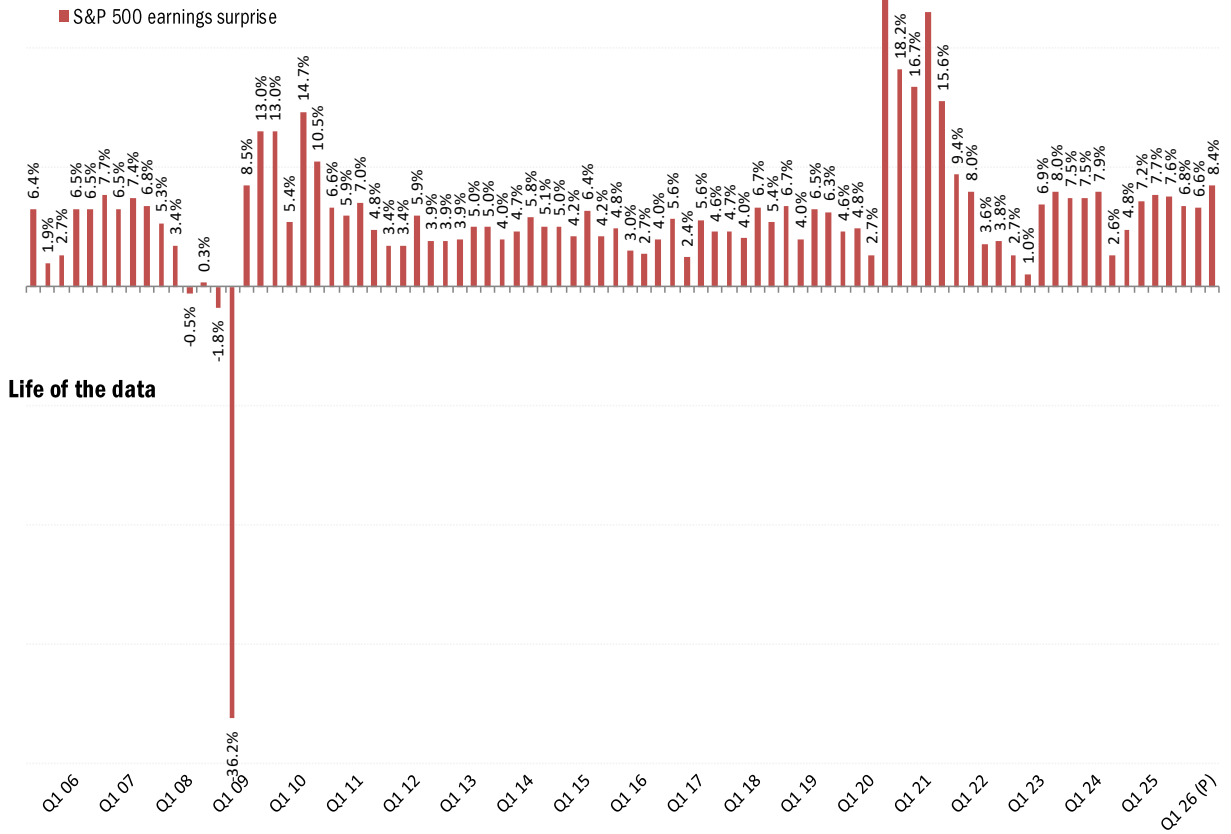
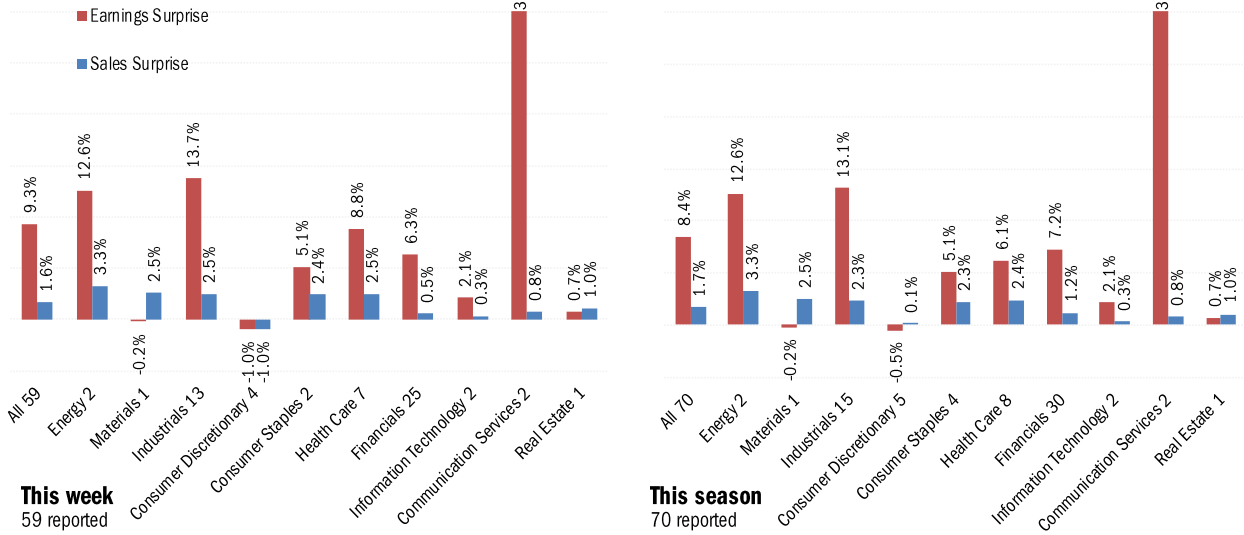
Source: As indicated, TrendMacro calculations

For more information contact us:

Donald Luskin: 214 550 2020 don@trendmacro.com

Thomas Demas: 704 552 3625 tdemas@trendmacro.com

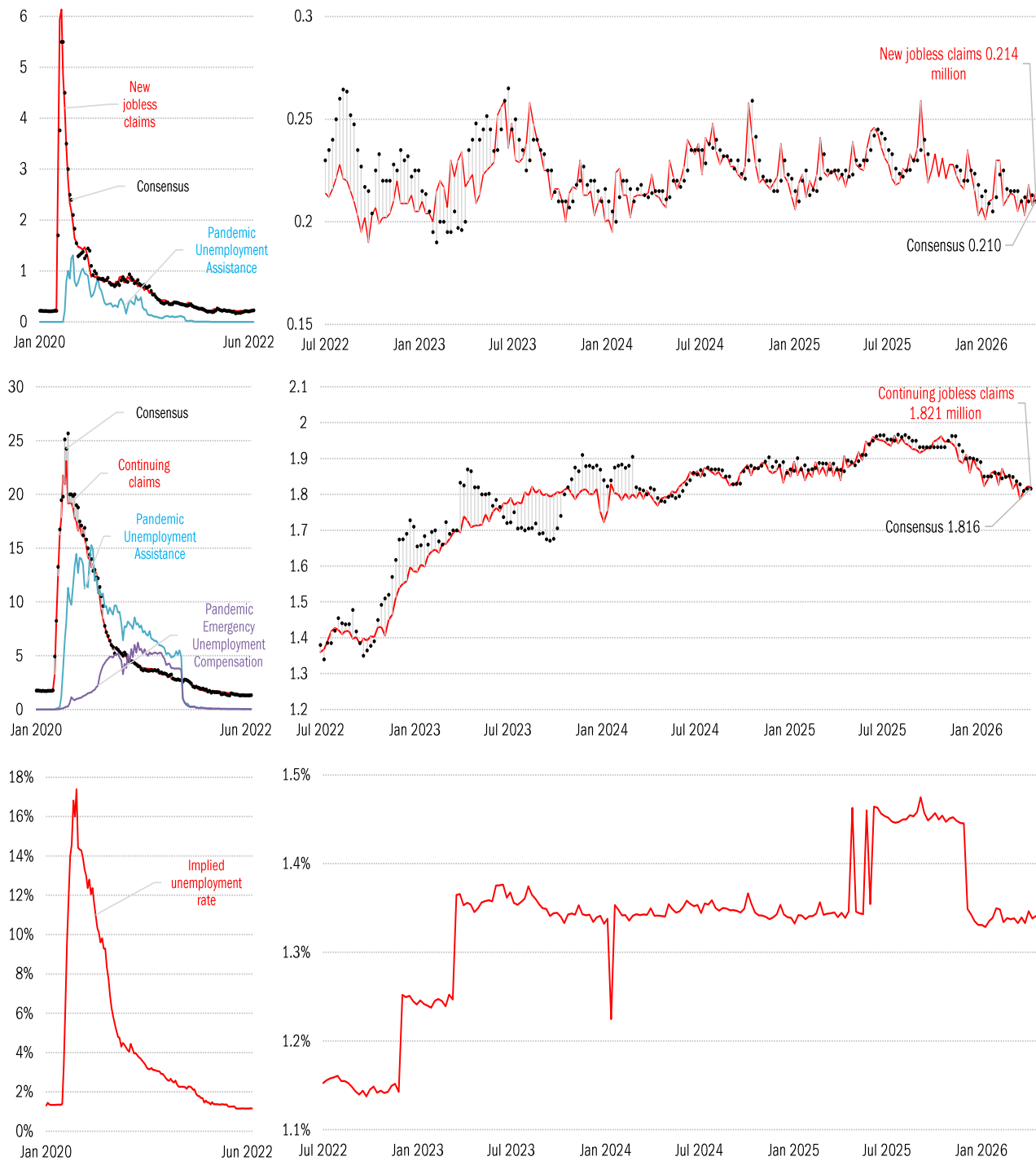
S&P 500 earnings and sales surprise monitor



Source: Bloomberg, TrendMacro calculations

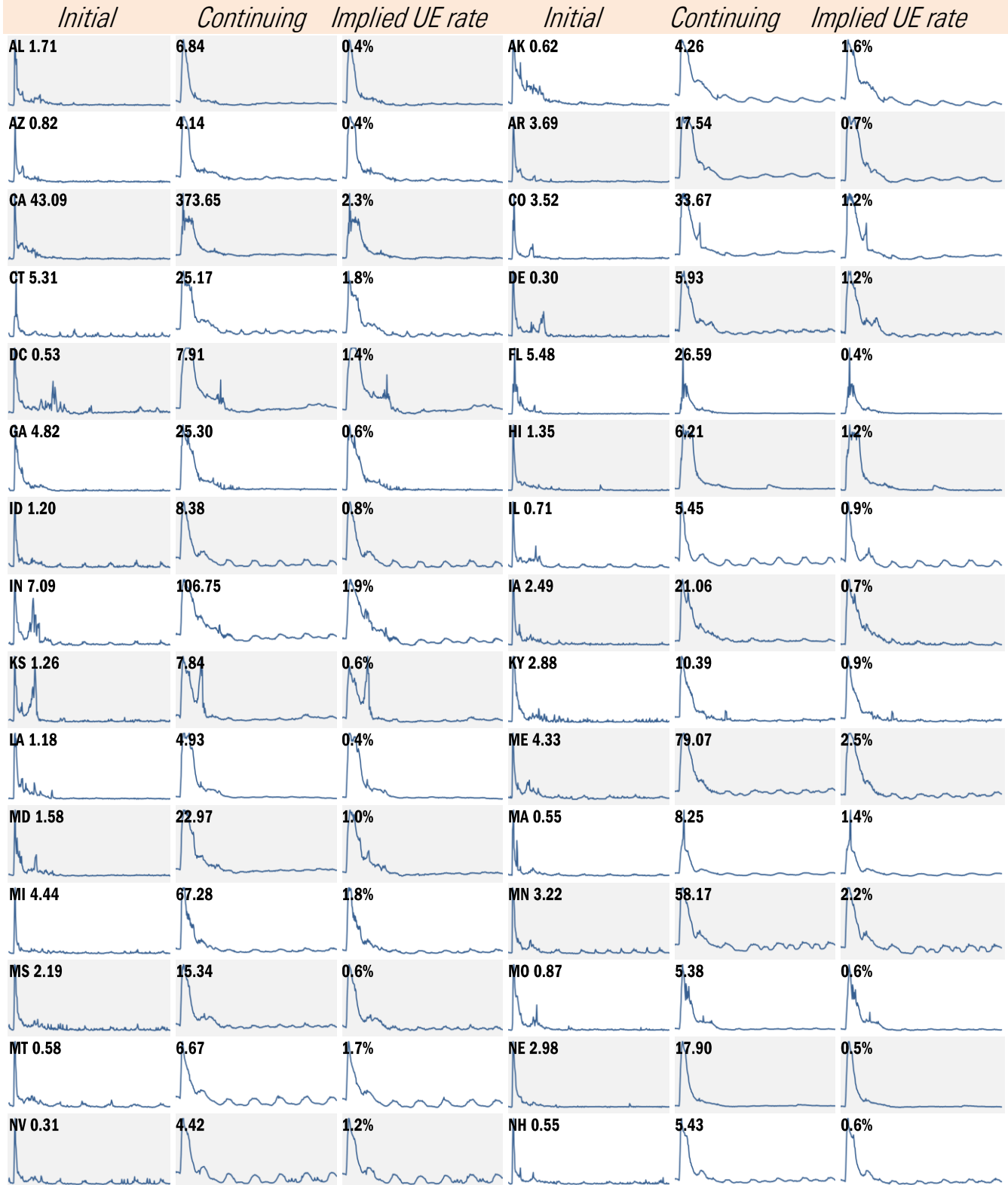
High-frequency view of the US labor market: weekly unemployment claims (millions)

As of Apr 17



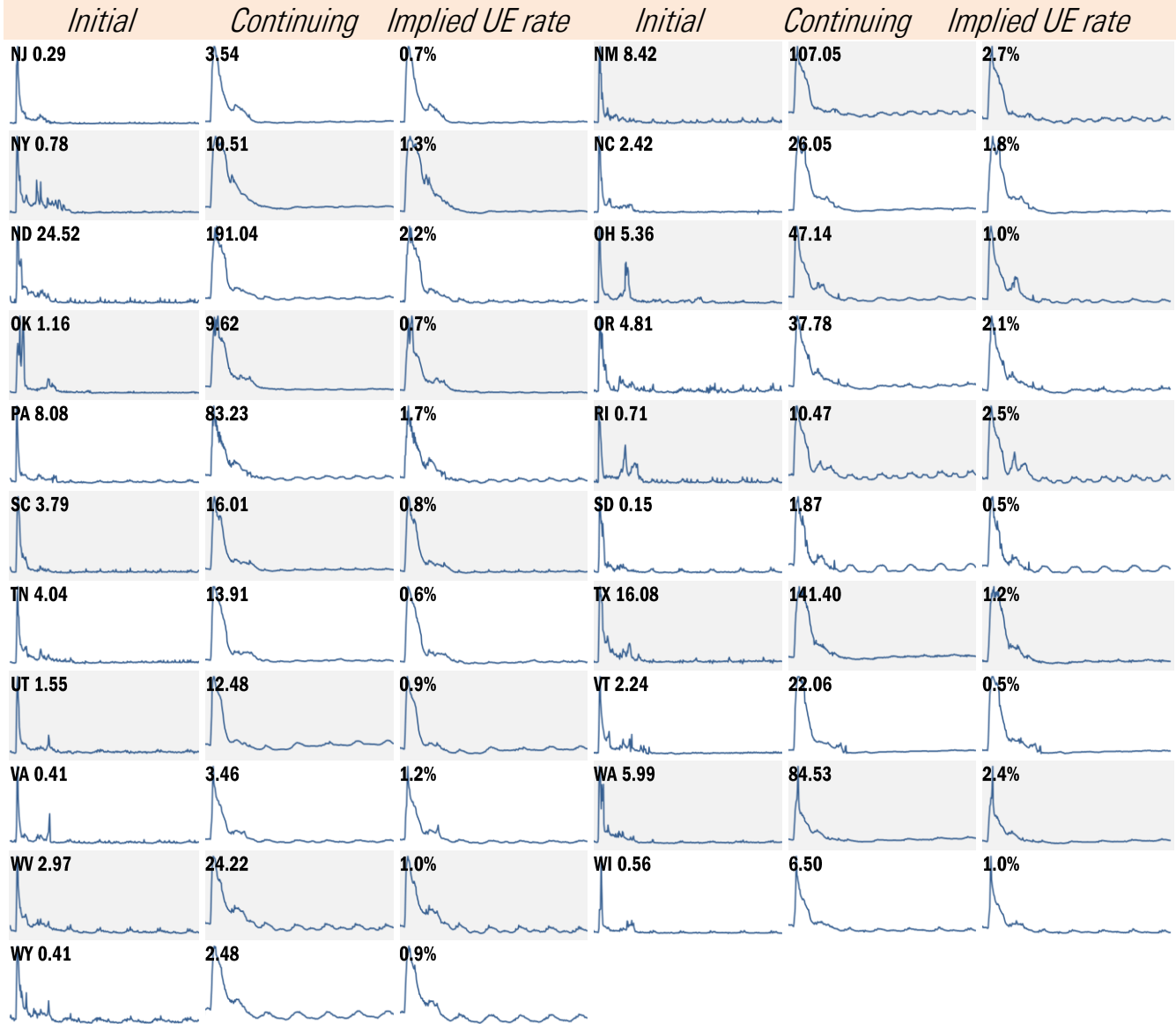
Source: Department of Labor, Bloomberg, TrendMacro calculations

State by state unemployment insurance claims (thousands) January 2020 to present



Source: Department of Labor, TrendMacro calculations

State by state unemployment insurance claims (thousands) January 2020 to present



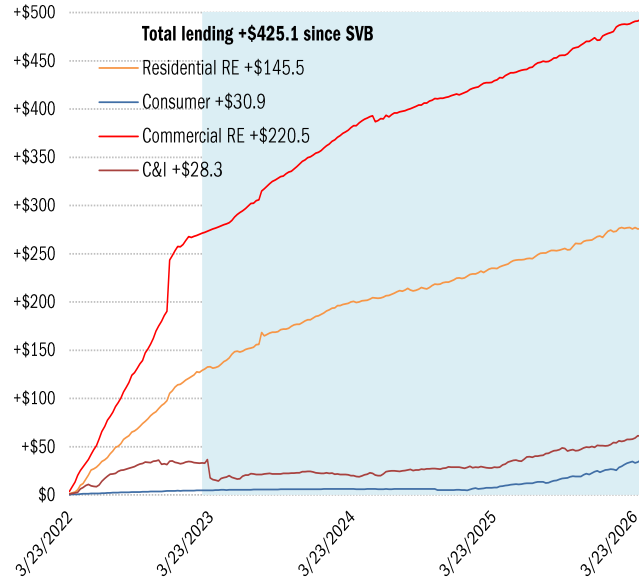
Source: Department of Labor, TrendMacro calculations

Asset and liability dynamics in US commercial banks

■ Post-SVB failure

Cumulative change in assets (USD billions)

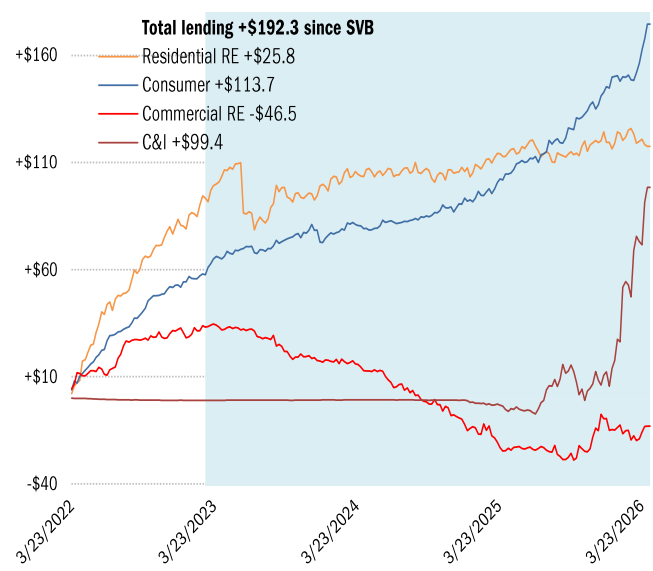
Small banks



Cumulative change in assets (USD billions)

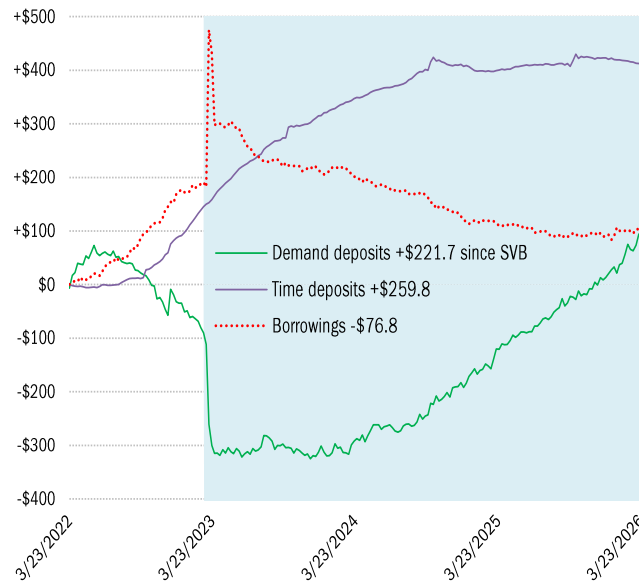
Large banks

As of Apr 15



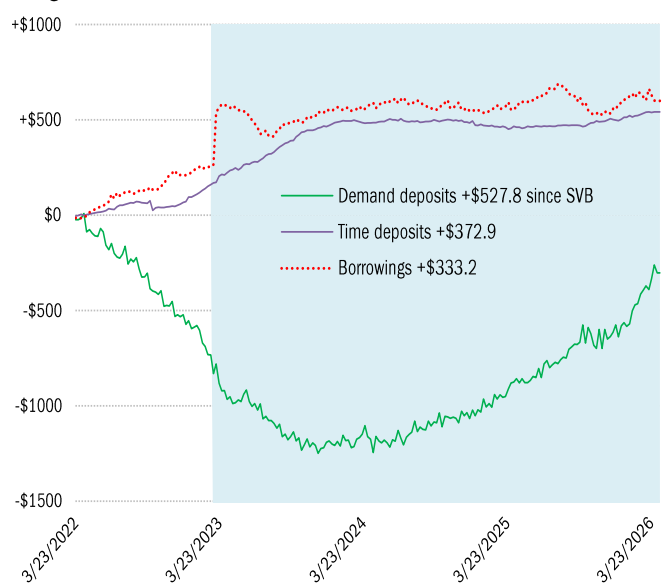
Cumulative change in liabilities (USD billions)

Small banks



Cumulative change in liabilities (USD billions)

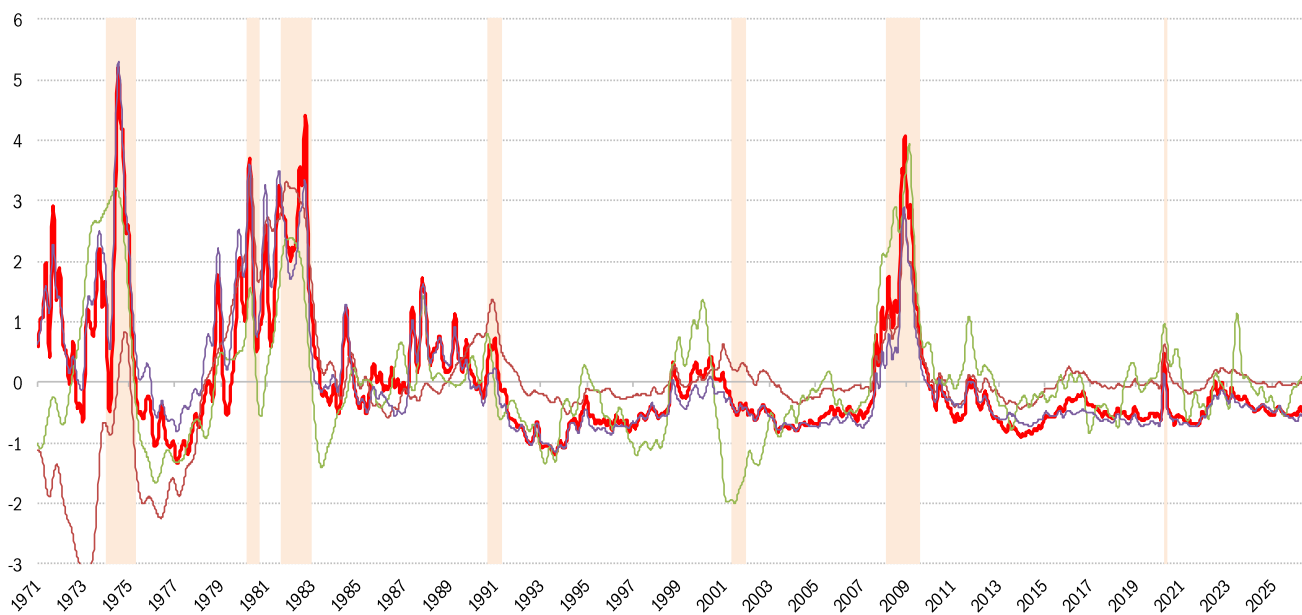
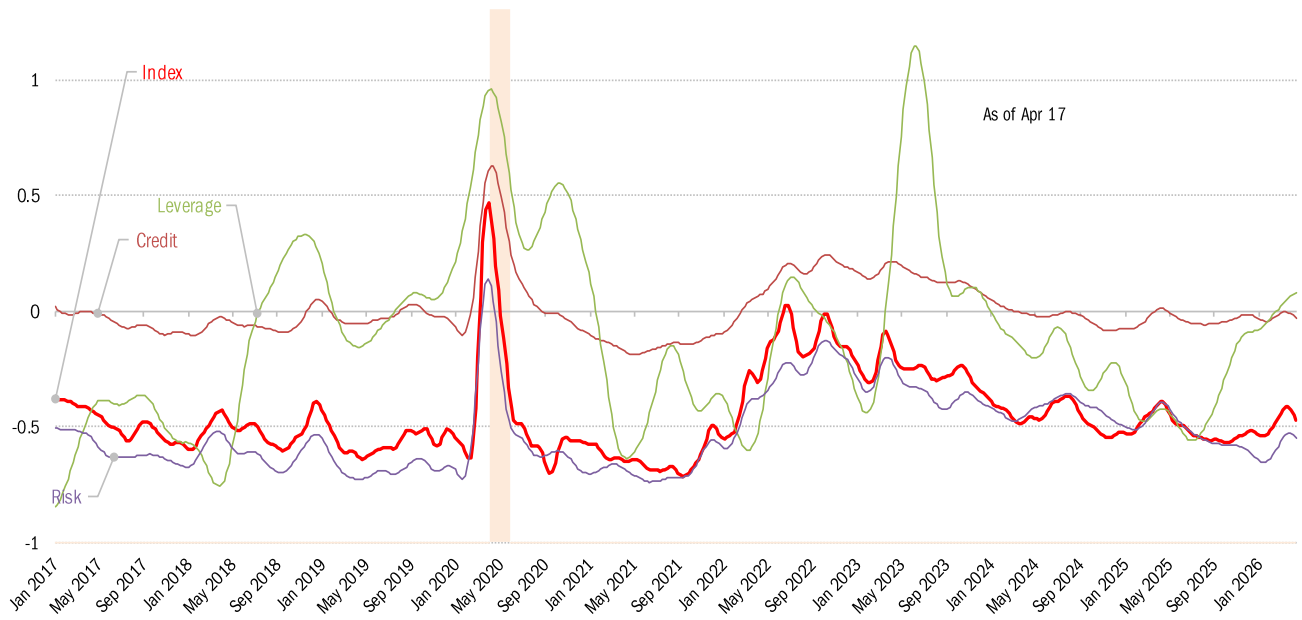
Large banks



Source: [Federal Reserve Board Report H.8](#), TrendMacro calculations

House of straw or house of brick? Chicago Fed Financial Conditions Index

Higher values: tight conditions Lower values: loose conditions

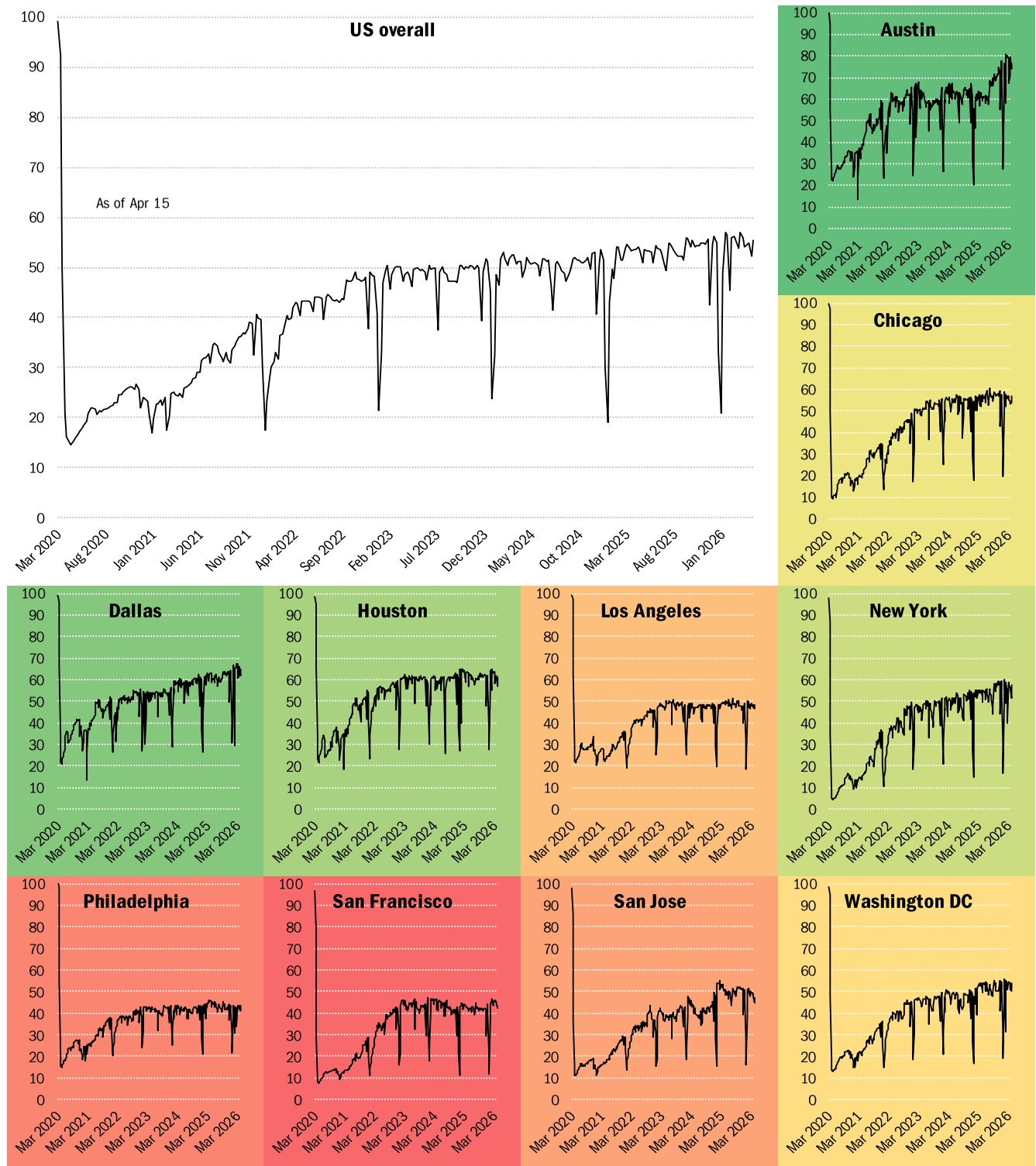


Source: [Chicago Fed](#), TrendMacro calculations

Returning to the American office

■ Most utilized ■ Least utilized

Indices of office capacity utilization based on weekly door-security access data (NSA)

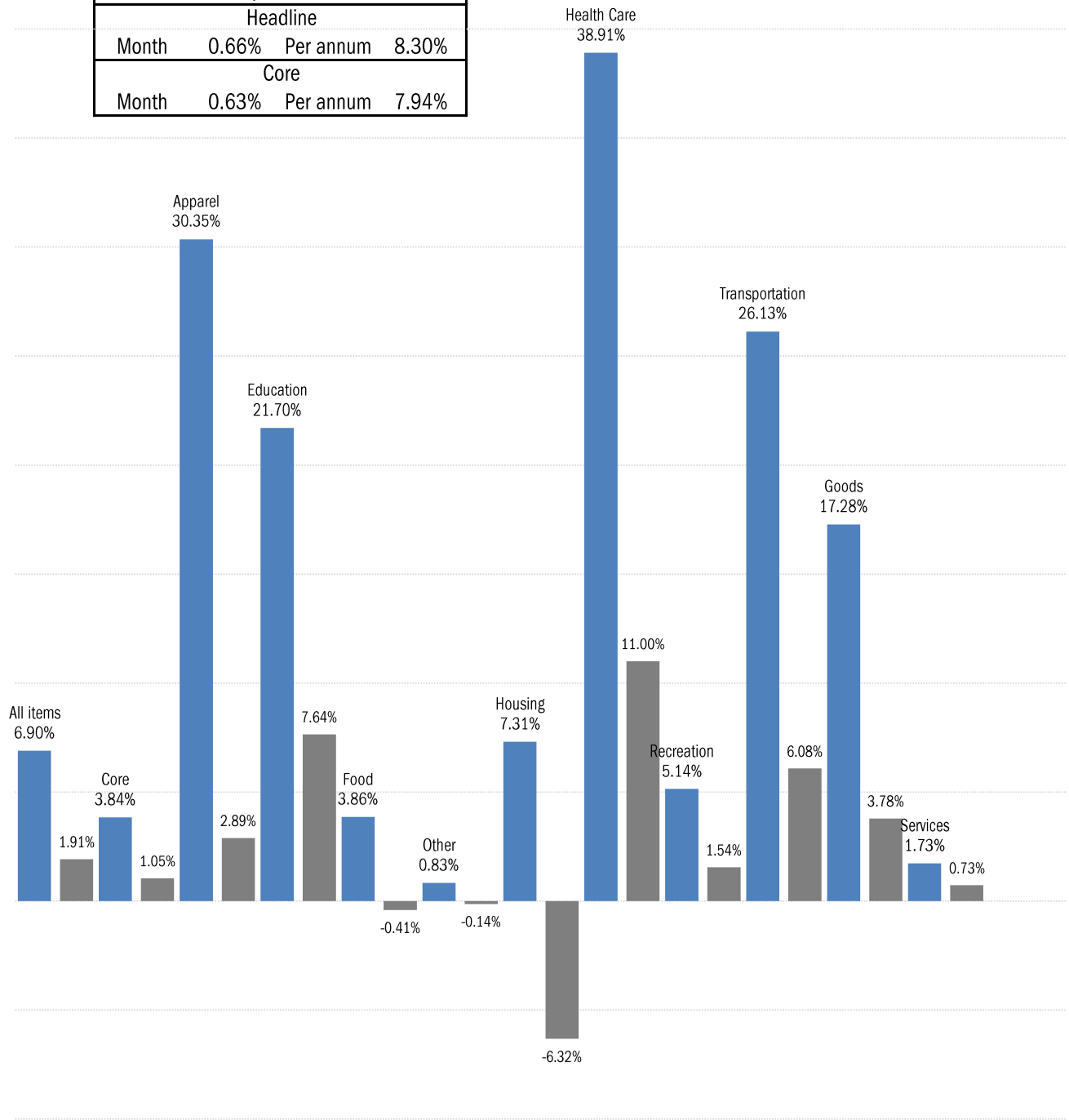


Source: [Kastle Systems](#), TrendMacro calculations

Inflation in real time, based on Truflation's daily telemetry

■ Trailing 90-day consumer price inflation, annual rate ■ Trailing 365-day

April so far			
Headline			
Month	0.66%	Per annum	8.30%
Core			
Month	0.63%	Per annum	7.94%



Source: [Truflation](#), TrendMacro calculations