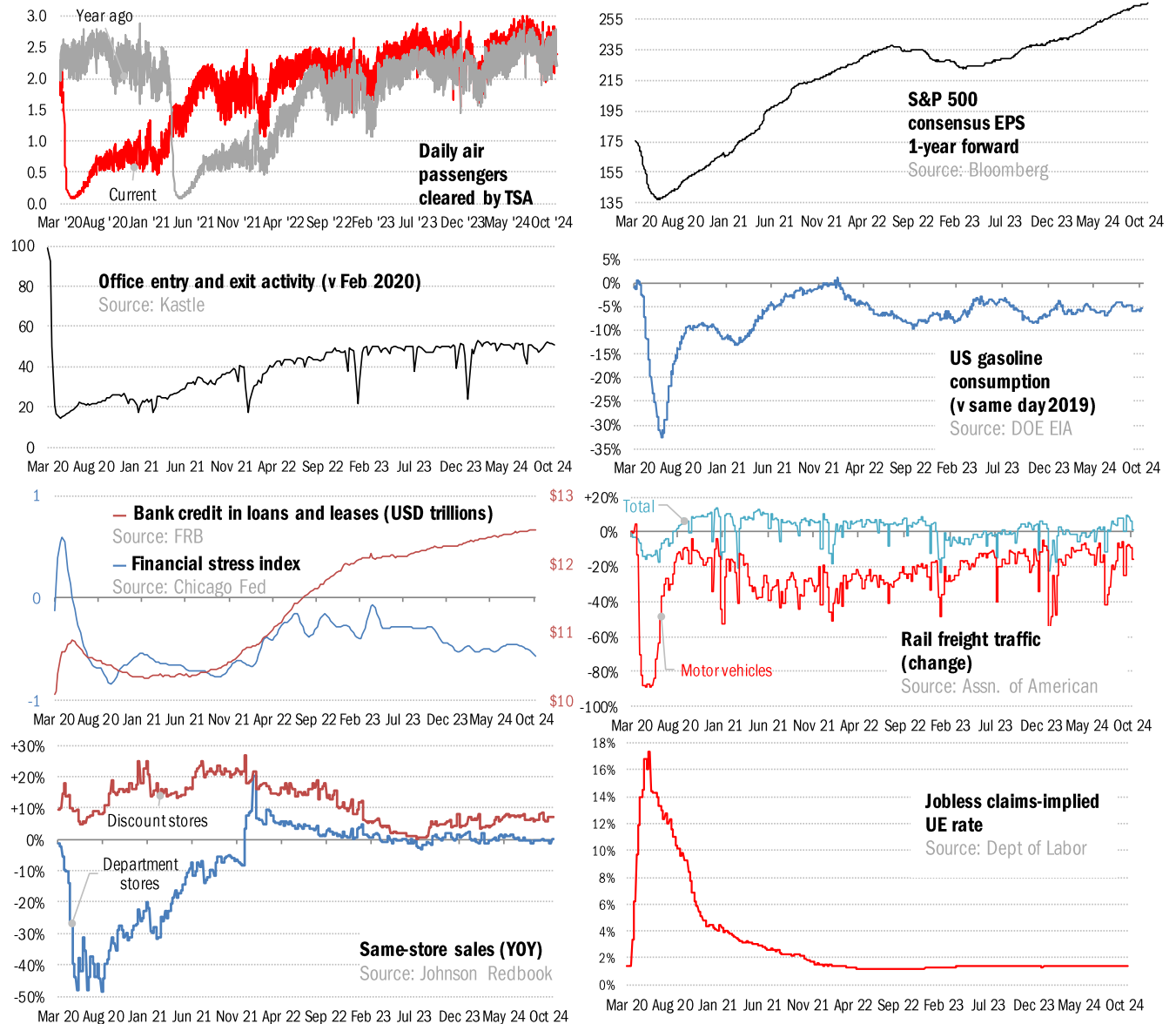


## Data Insights: High-Frequency Post-Virus US Recovery Monitor

Thursday, October 24, 2024

### The US high-frequency macro data dashboard

(state level and other detail in subsequent charts)

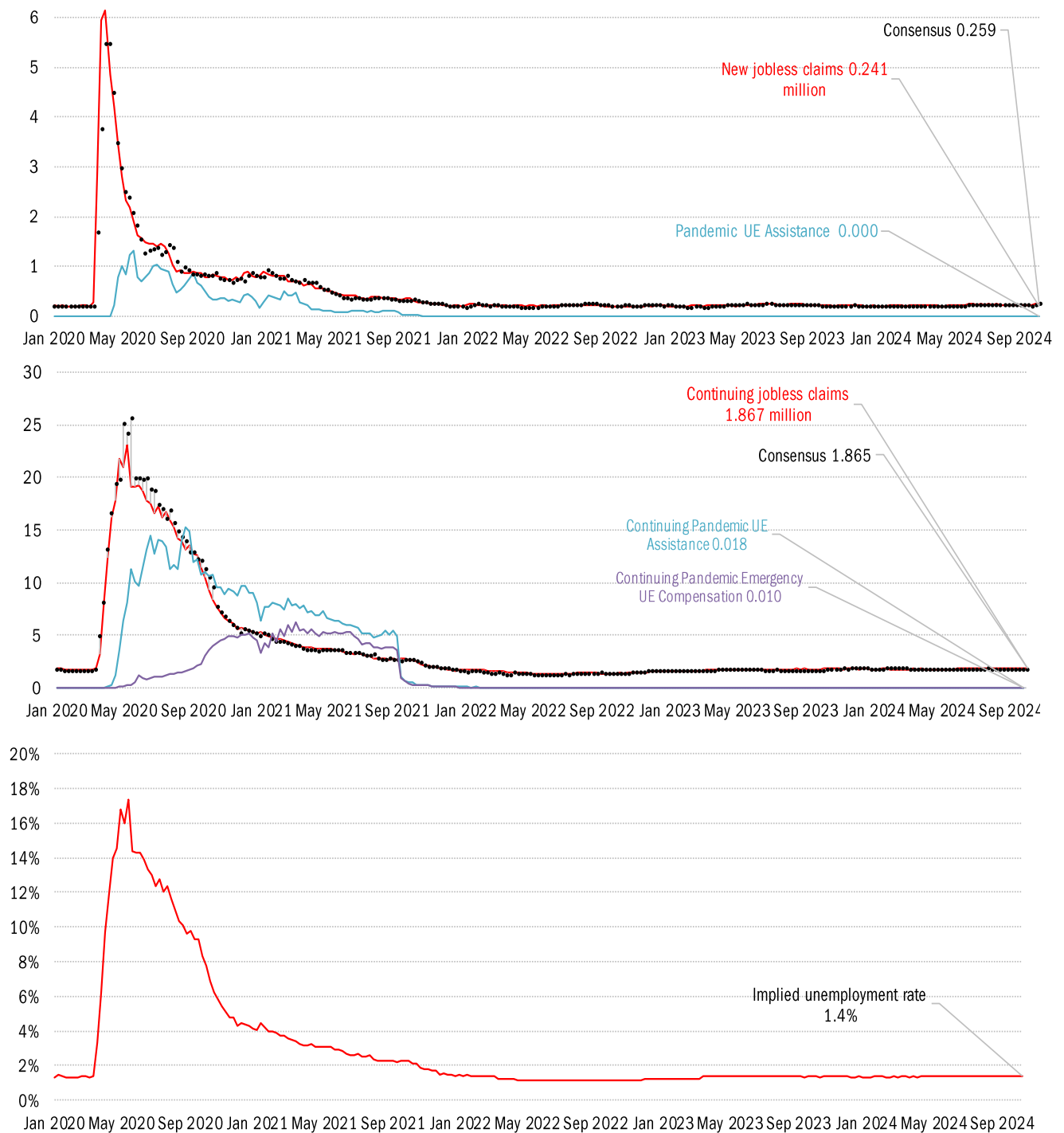


Source: As indicated, TrendMacro calculations

#### For more information contact us:

Donald Luskin: 214 550 2020 [don@trendmacro.com](mailto:don@trendmacro.com)  
 Thomas Demas: 704 552 3625 [tdemas@trendmacro.com](mailto:tdemas@trendmacro.com)

## High-frequency view of the US labor market: weekly unemployment claims (millions)



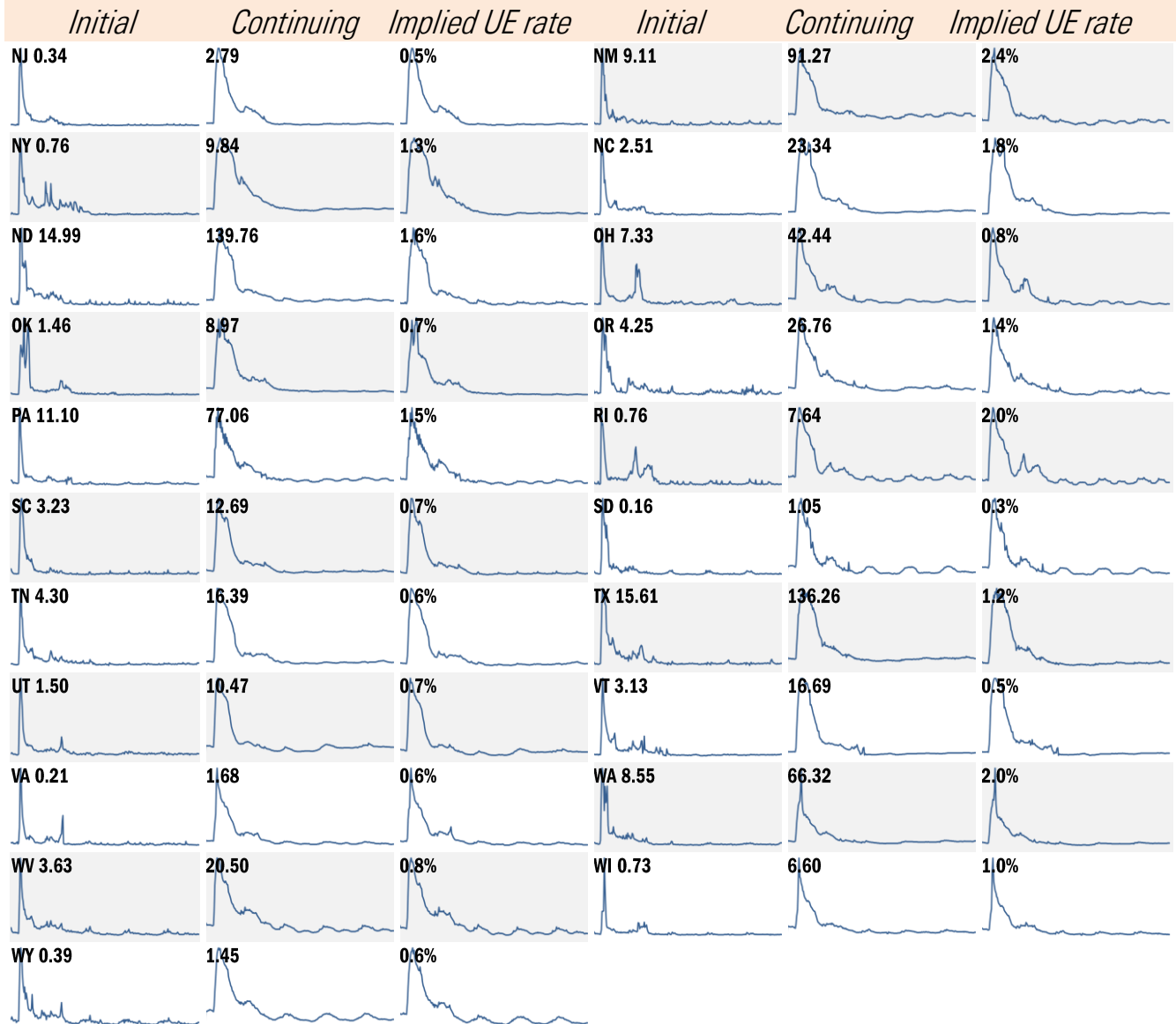
Source: Department of Labor, Bloomberg, TrendMacro calculations

# State by state unemployment insurance claims (thousands) January 2020 to present



Source: Department of Labor, TrendMacro calculations

# State by state unemployment insurance claims (thousands) January 2020 to present

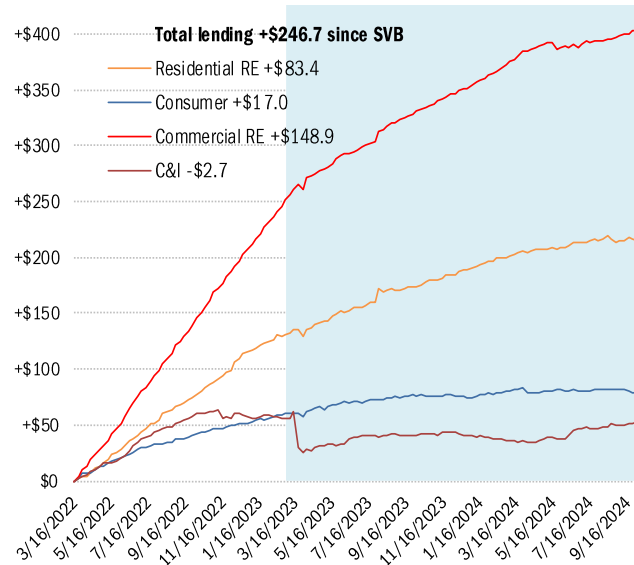


Source: Department of Labor, TrendMacro calculations

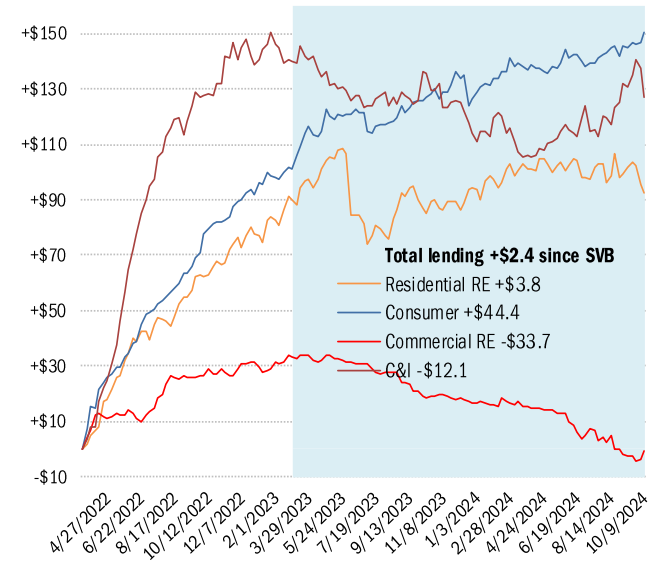
# Asset and liability dynamics in US commercial banks

■ Post-SVB failure

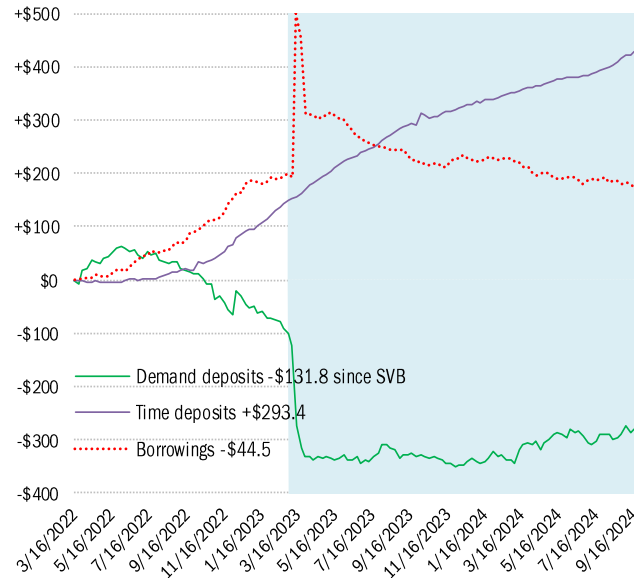
Cumulative change in assets (USD billions)  
Small banks



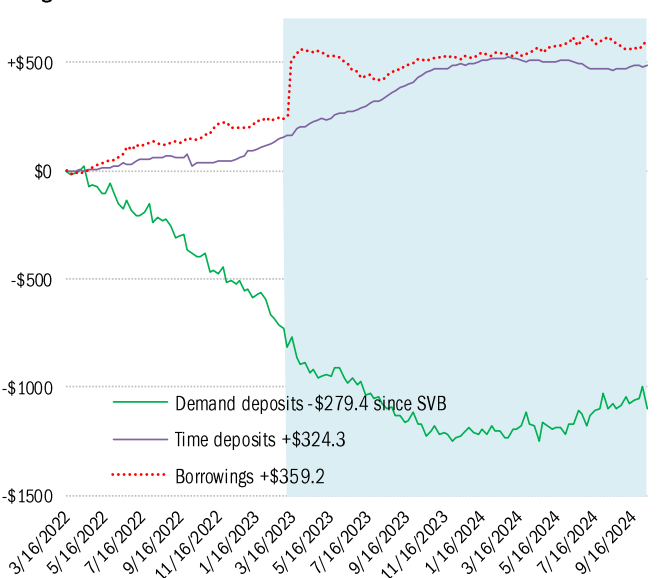
Cumulative change in assets (USD billions)  
Large banks



Cumulative change in liabilities (USD billions)  
Small banks



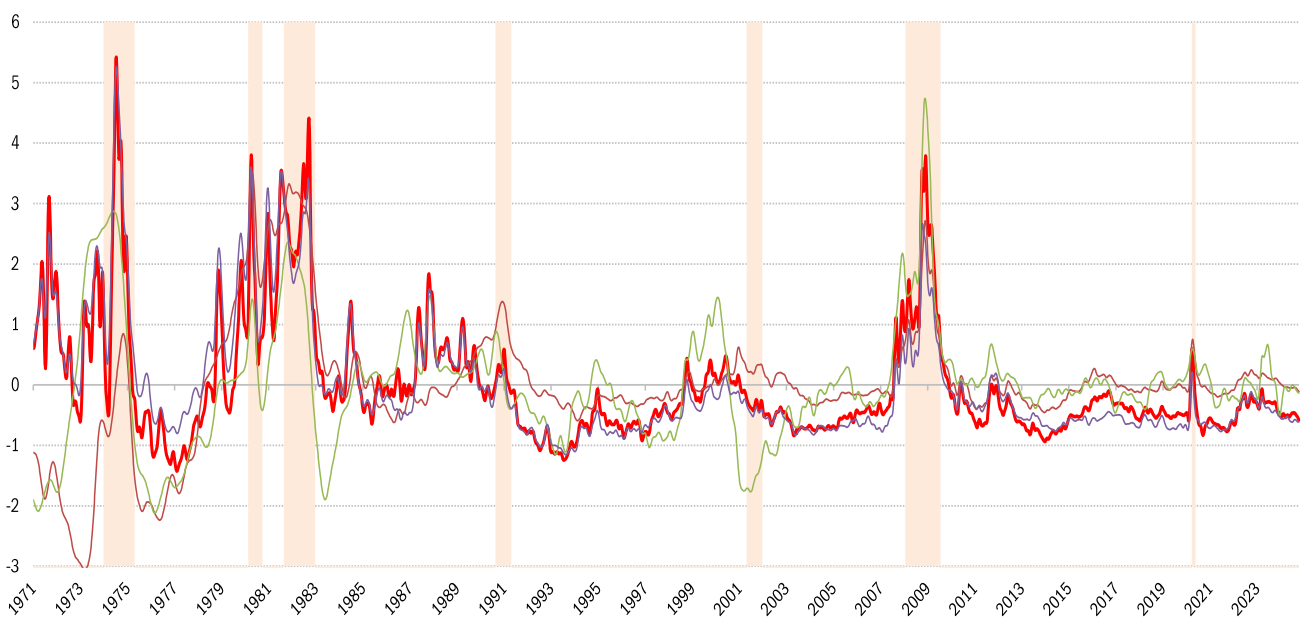
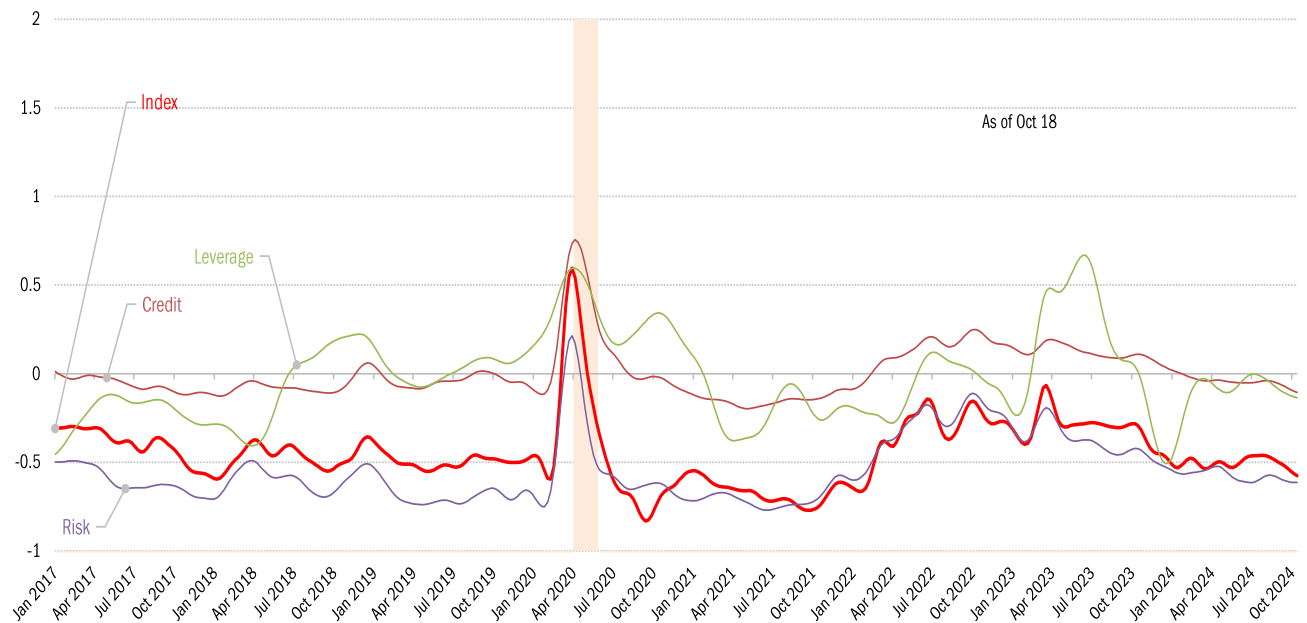
Cumulative change in liabilities (USD billions)  
Large banks



Source: [Federal Reserve Board Report H.8](#), TrendMacro calculations

## House of straw or house of brick? Chicago Fed Financial Conditions Index

Higher values: tight conditions    Lower values: loose conditions

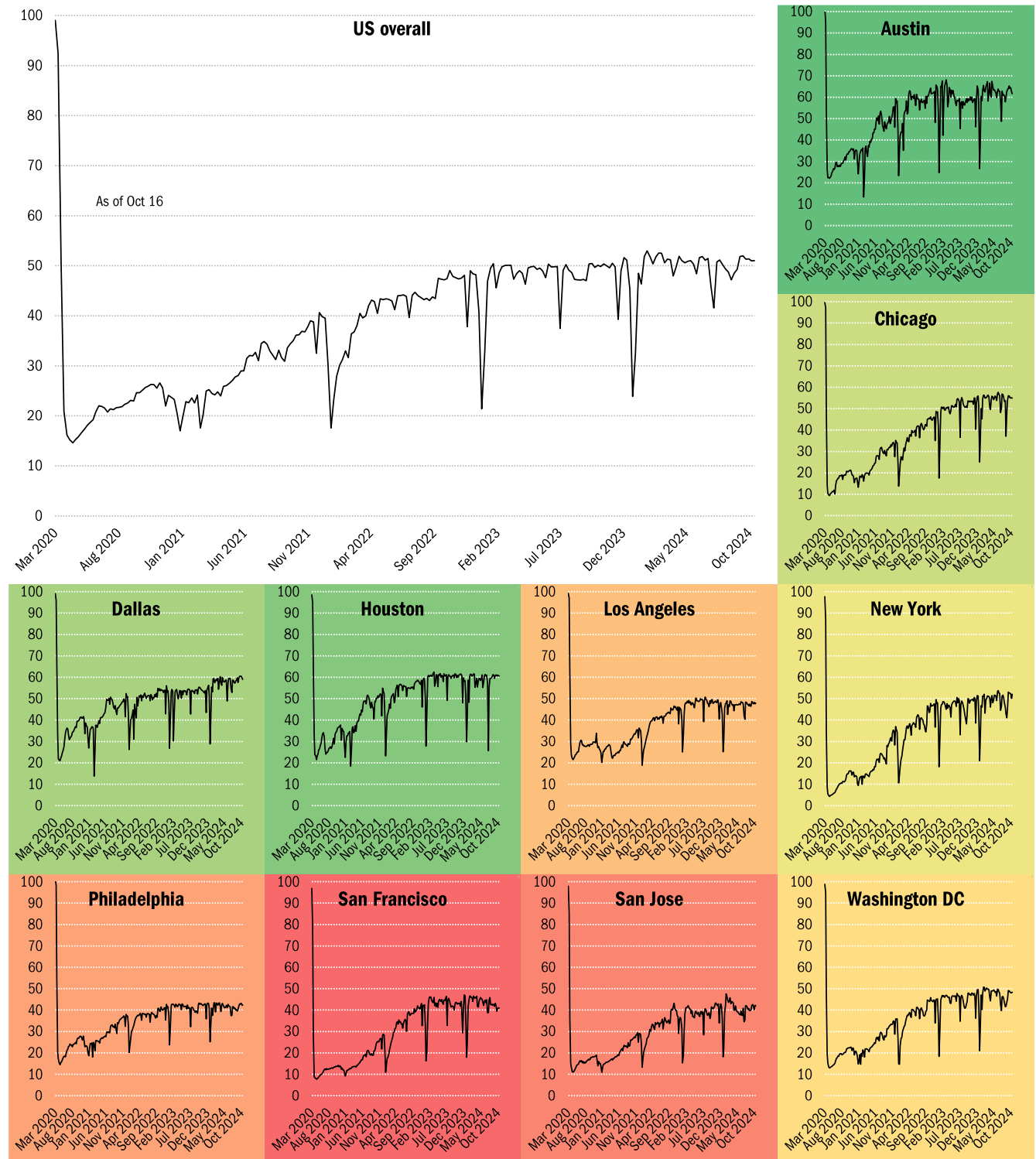


Source: [Chicago Fed](#), TrendMacro calculations

## Returning to the American office

■ Most utilized ■ Least utilized

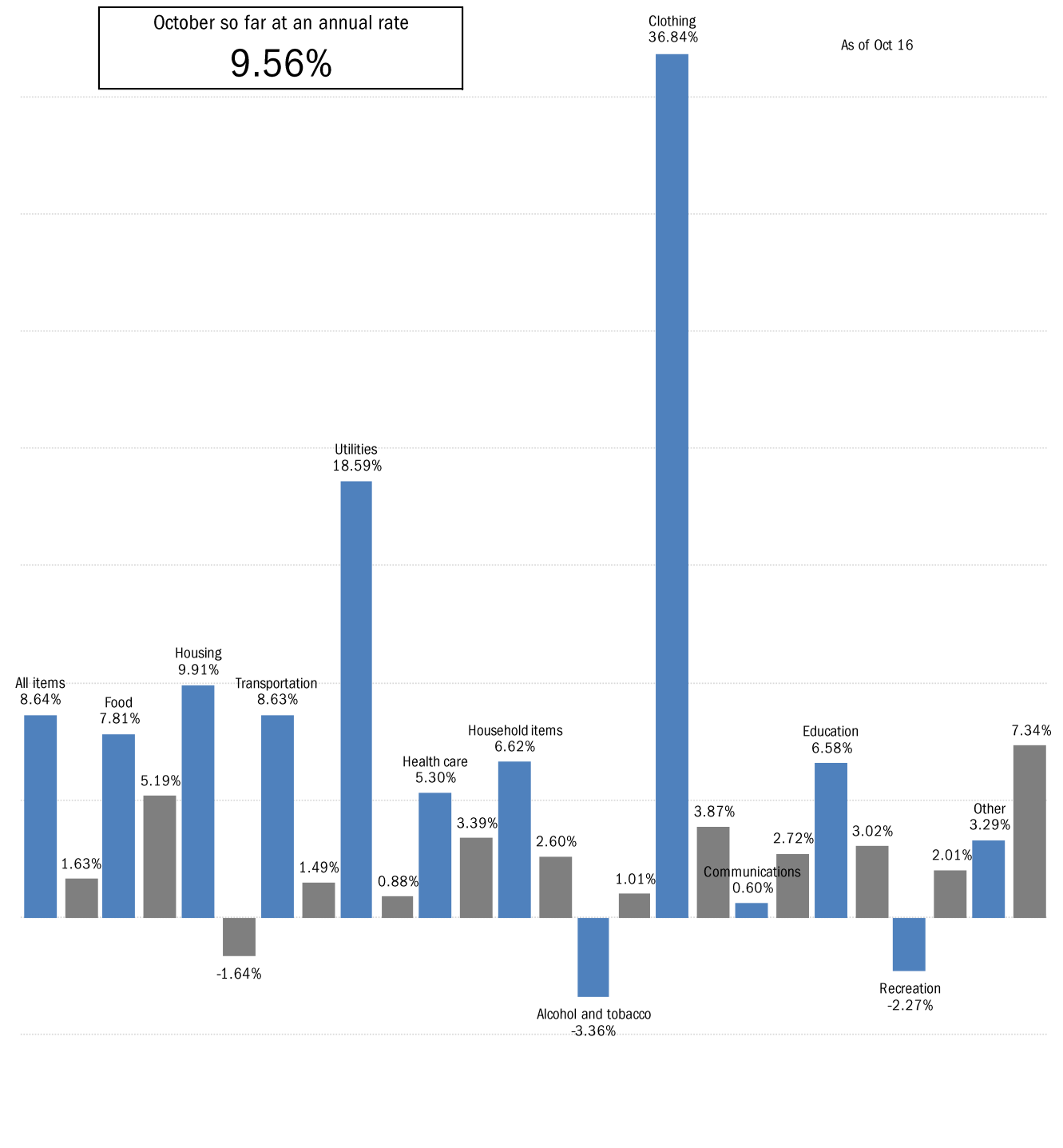
Indices of office capacity utilization based on weekly door-security access data (NSA)



Source: [Kastle Systems](#), TrendMacro calculations

## Inflation in real time, based on Truflation's daily telemetry

■ Trailing 31-day consumer price inflation, annual rate ■ Trailing 365-day



Source: [Truflation](#), TrendMacro calculations