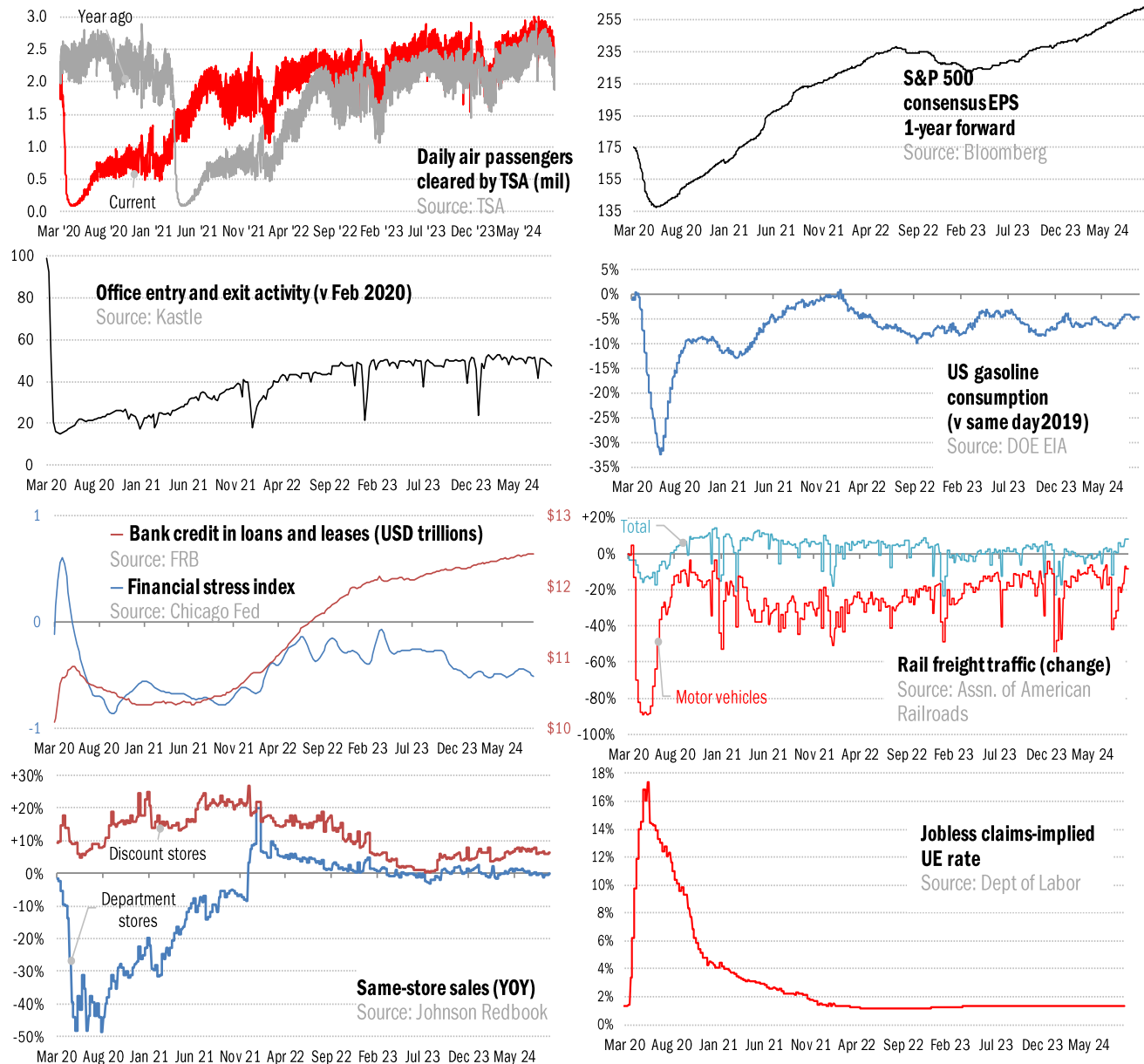


Data Insights: High-Frequency Post-Virus US Recovery Monitor

Thursday, September 5, 2024

The US high-frequency macro data dashboard

(state level and other detail in subsequent charts)



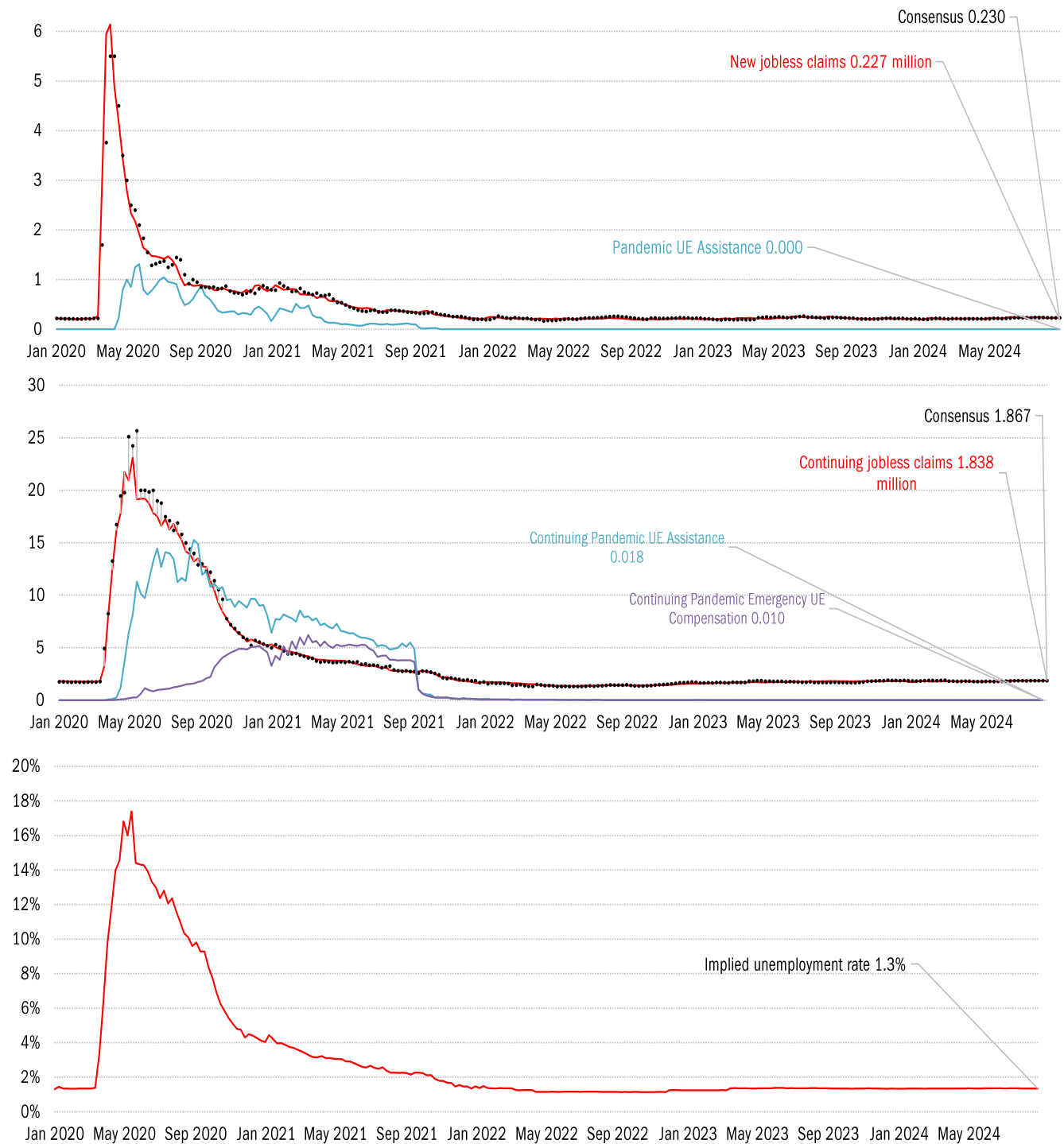
Source: As indicated, TrendMacro calculations

For more information contact us:

Donald Luskin: 214 550 2020 don@trendmacro.com
 Thomas Demas: 704 552 3625 tdemas@trendmacro.com

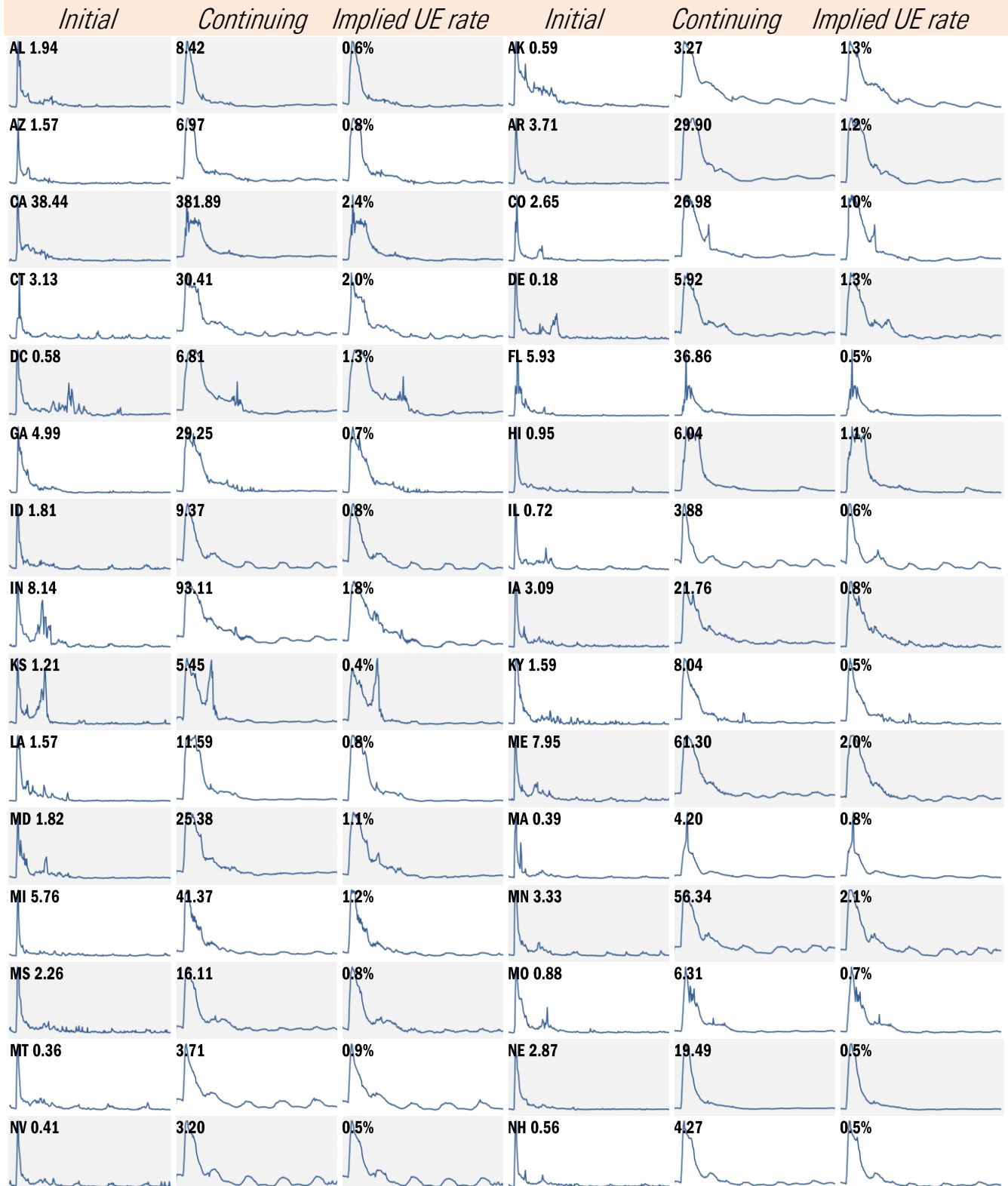
Copyright 2024 Trend Macrolytics LLC. All rights reserved. This document is not to be forwarded to individuals or organizations not authorized by Trend Macrolytics LLC to receive it. For information purposes only; not to be deemed to be recommendations for buying or selling specific securities or to constitute personalized investment advice. Derived from sources deemed to be reliable, but no warranty is made as to accuracy.

High-frequency view of the US labor market: weekly unemployment claims (millions)



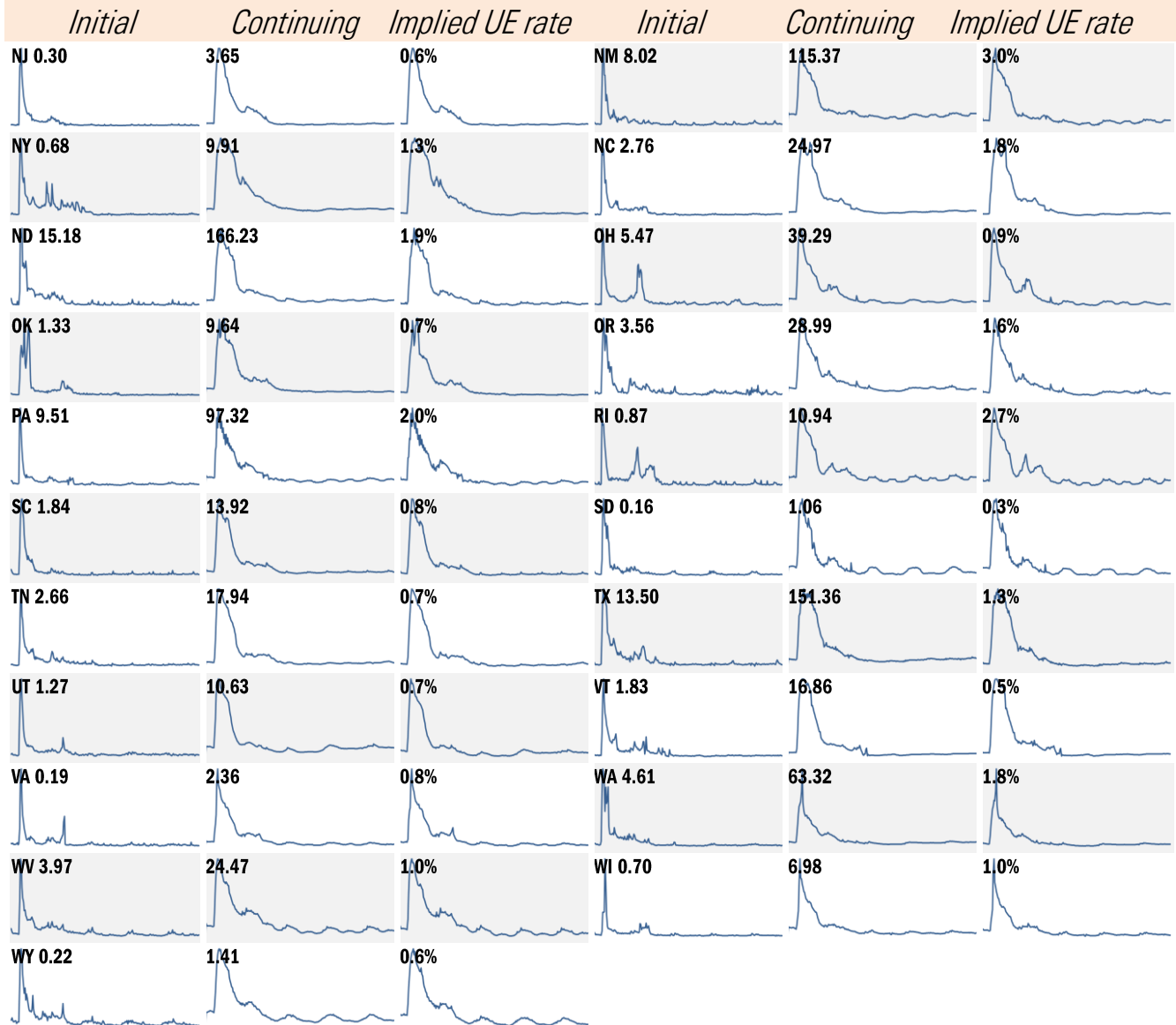
Source: Department of Labor, Bloomberg, TrendMacro calculations

State by state unemployment insurance claims (thousands) January 2020 to present



Source: Department of Labor, TrendMacro calculations

State by state unemployment insurance claims (thousands) January 2020 to present



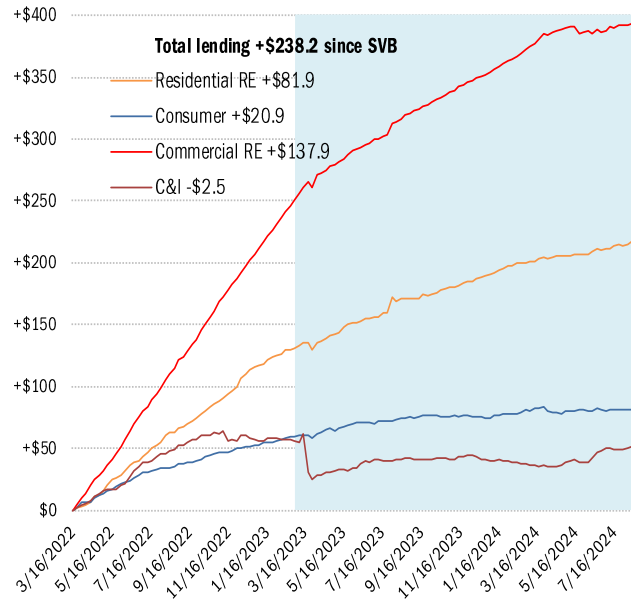
Source: Department of Labor, TrendMacro calculations

Asset and liability dynamics in US commercial banks

■ Post-SVB failure

Cumulative change in assets (USD billions)

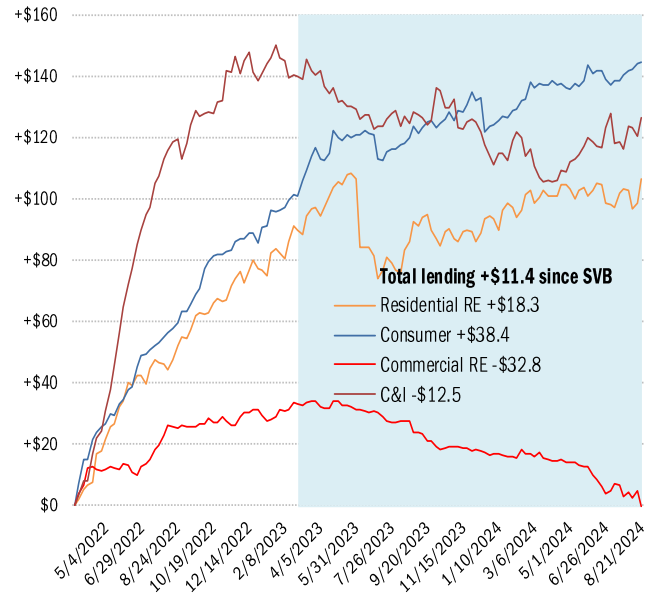
Small banks



Cumulative change in assets (USD billions)

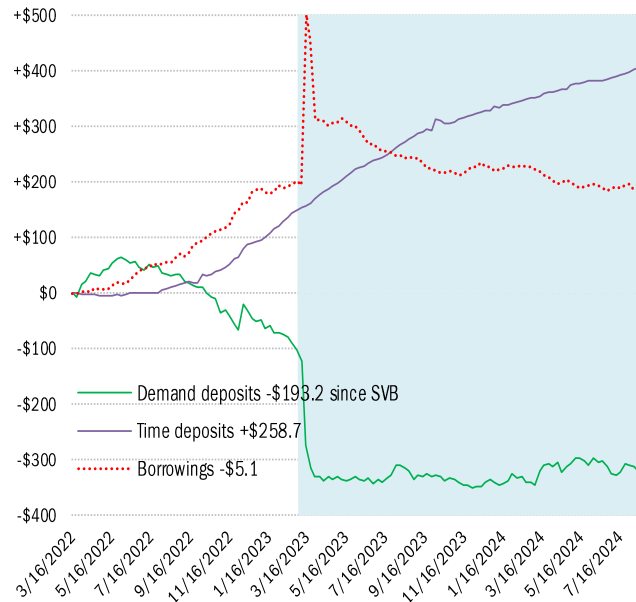
As of Aug 21

Large banks



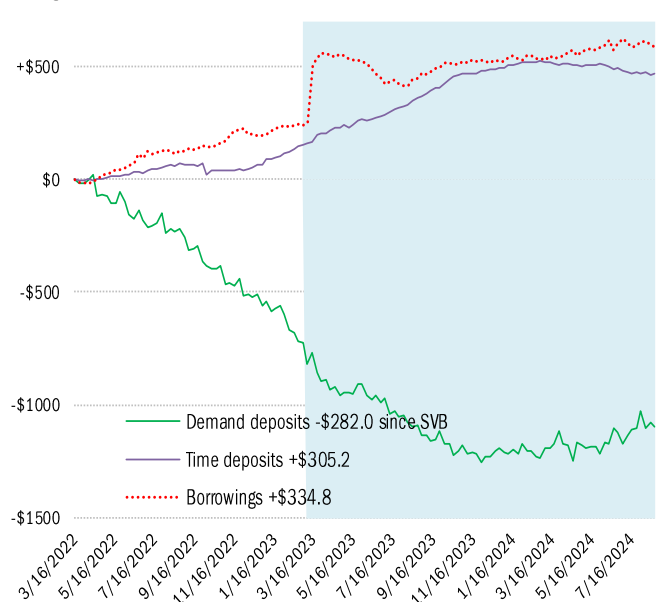
Cumulative change in liabilities (USD billions)

Small banks



Cumulative change in liabilities (USD billions)

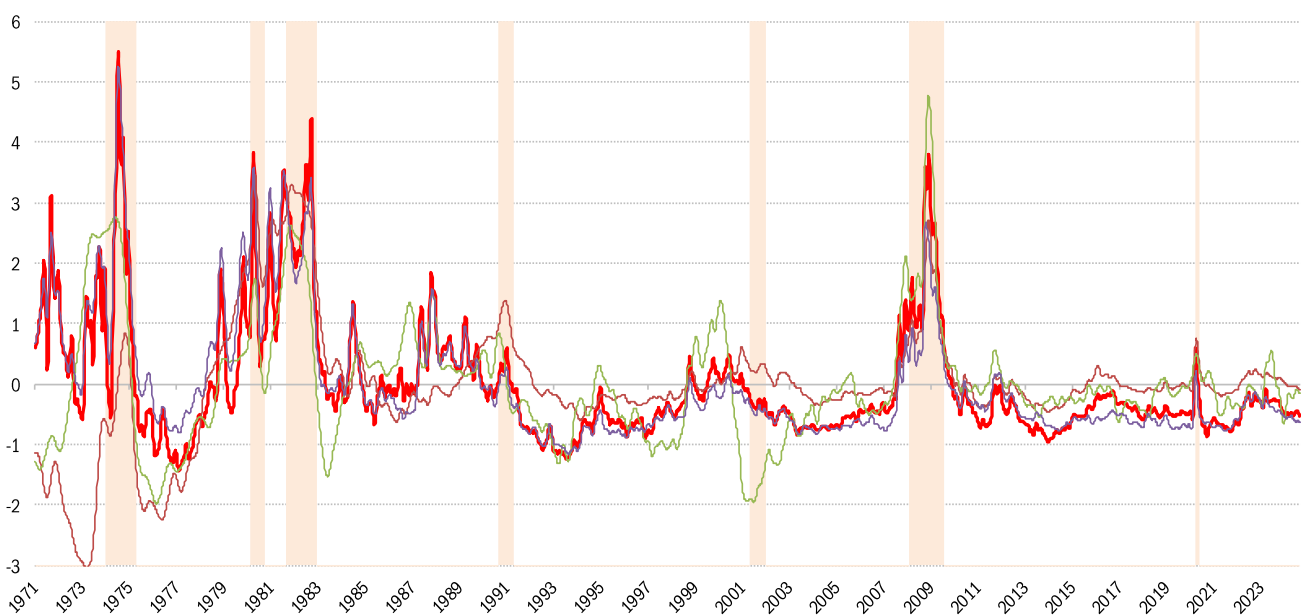
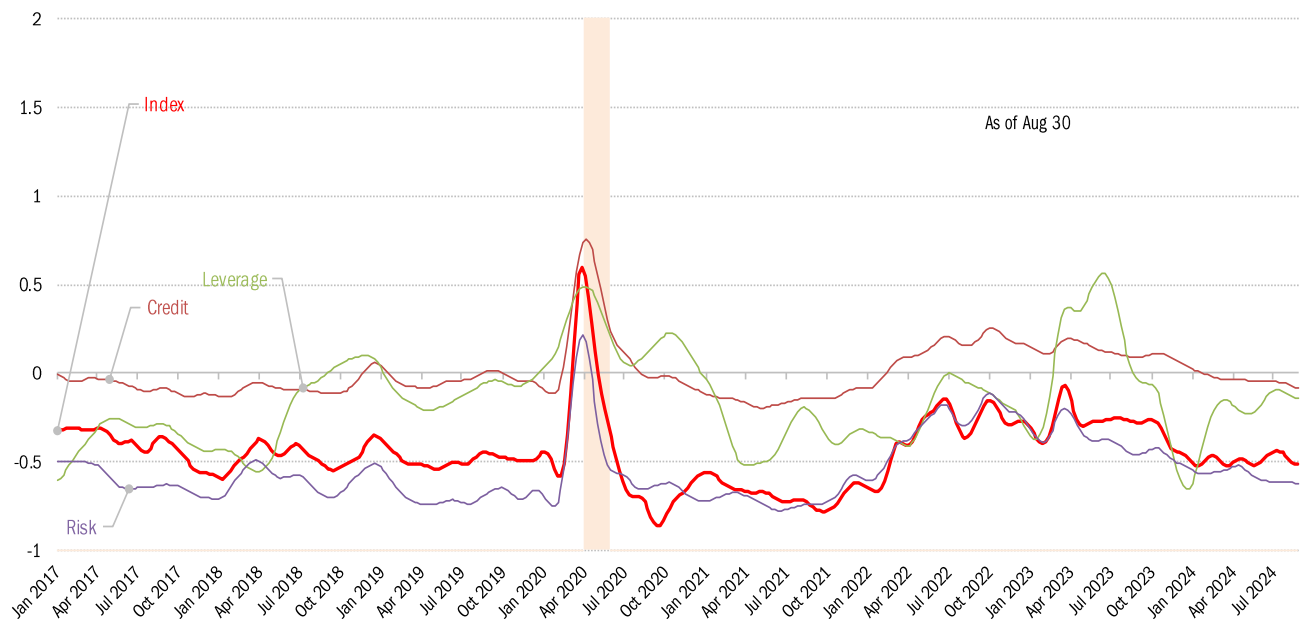
Large banks



Source: [Federal Reserve Board Report H.8](#), TrendMacro calculations

House of straw or house of brick? Chicago Fed Financial Conditions Index

Higher values: tight conditions Lower values: loose conditions

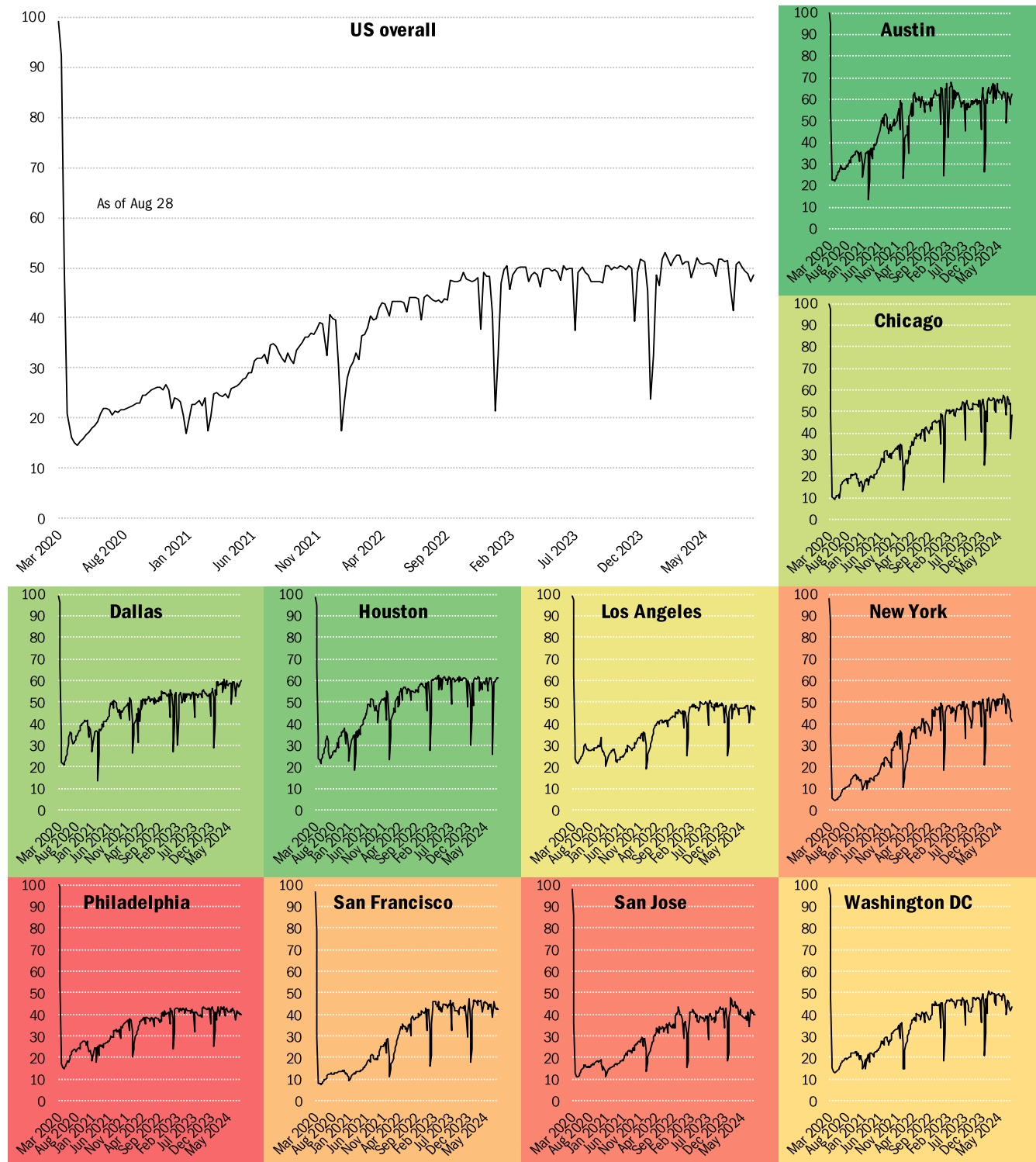


Source: [Chicago Fed](#), TrendMacro calculations

Returning to the American office

■ Most utilized ■ Least utilized

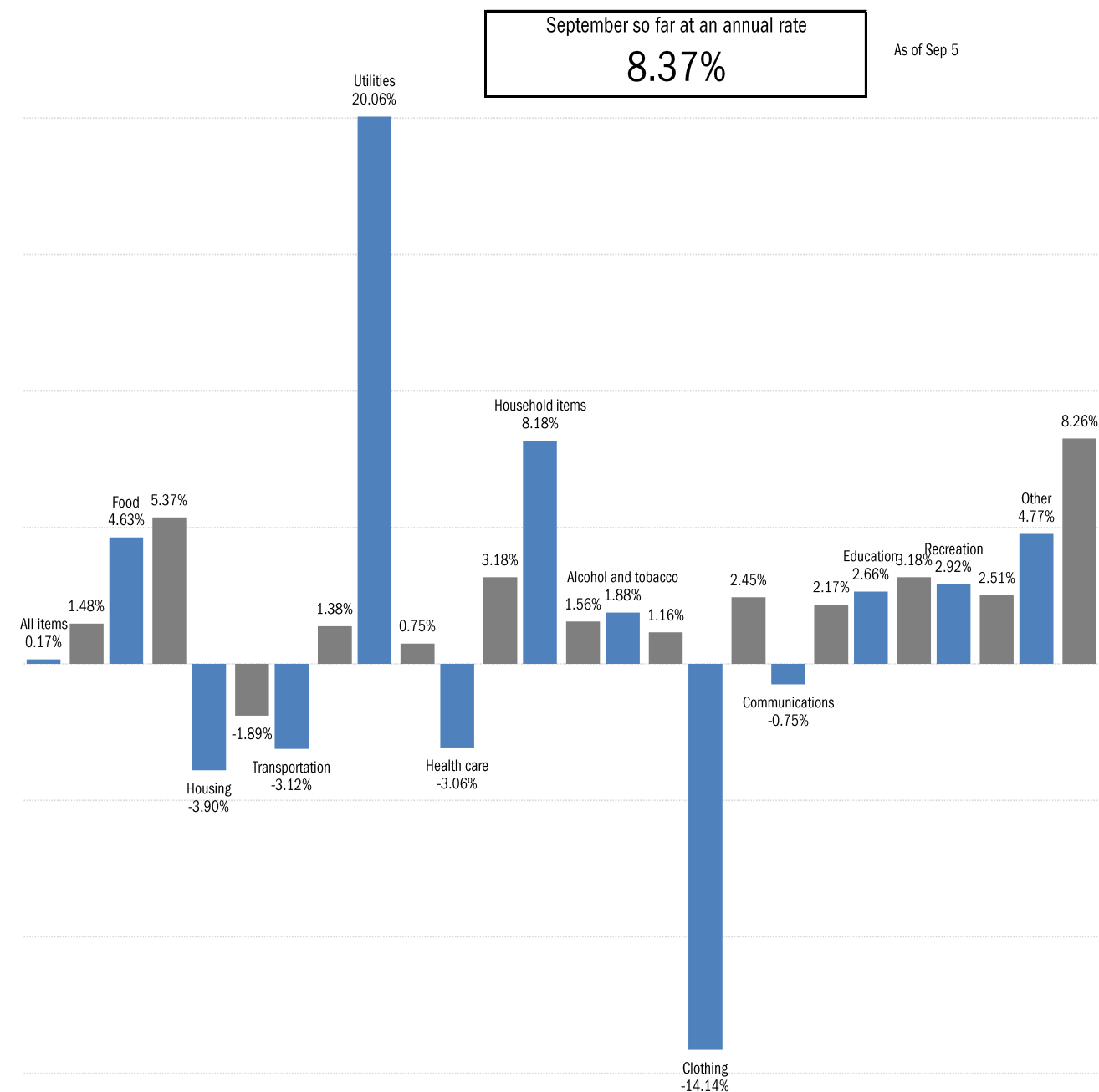
Indices of office capacity utilization based on weekly door-security access data (NSA)



Source: [Kastle Systems](#), TrendMacro calculations

Inflation in real time, based on Truflation's daily telemetry

■ Trailing 31-day consumer price inflation, annual rate ■ Trailing 365-day



Source: [Truflation](#), TrendMacro calculations