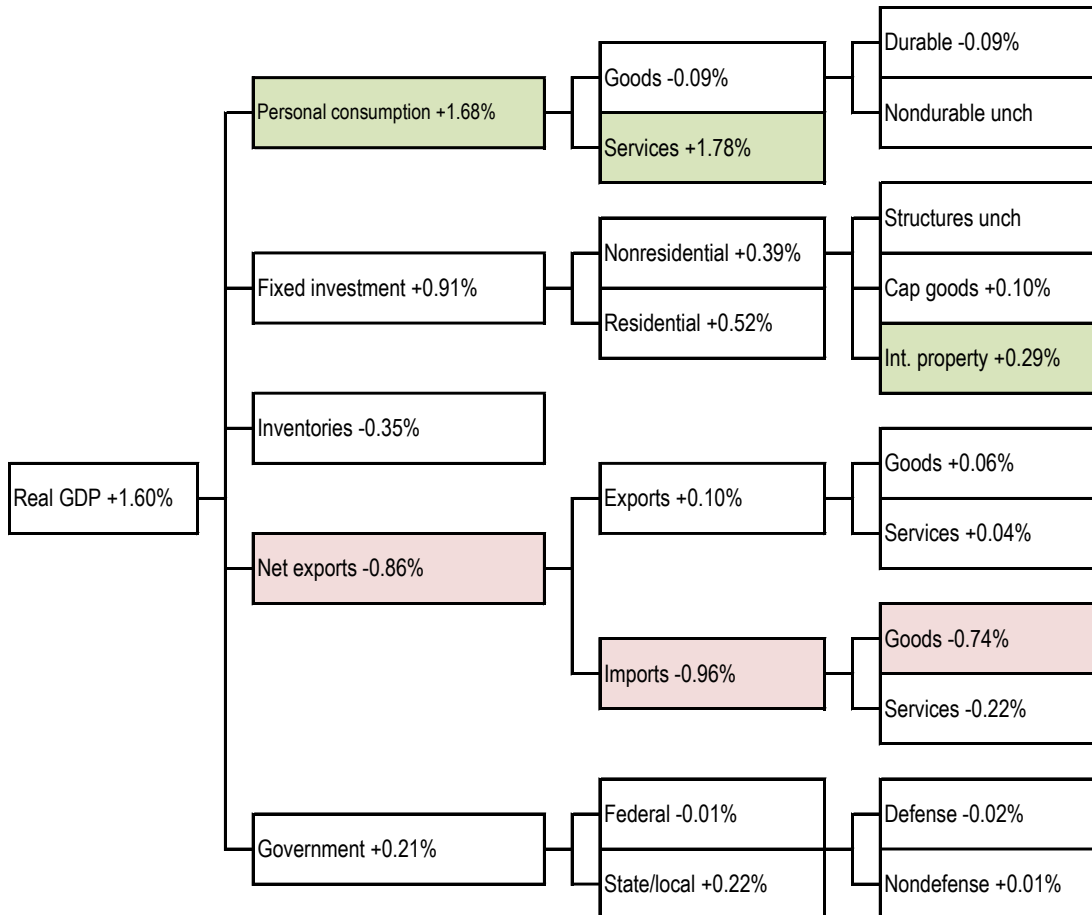


Data Insights: GDP

Thursday, April 25, 2024

Today's GDP data: what you need to know -- where did the growth come from?

Contributions to real, sequential quarter change, SAAR Biggest change per detail-level: ■ positive ■ negative



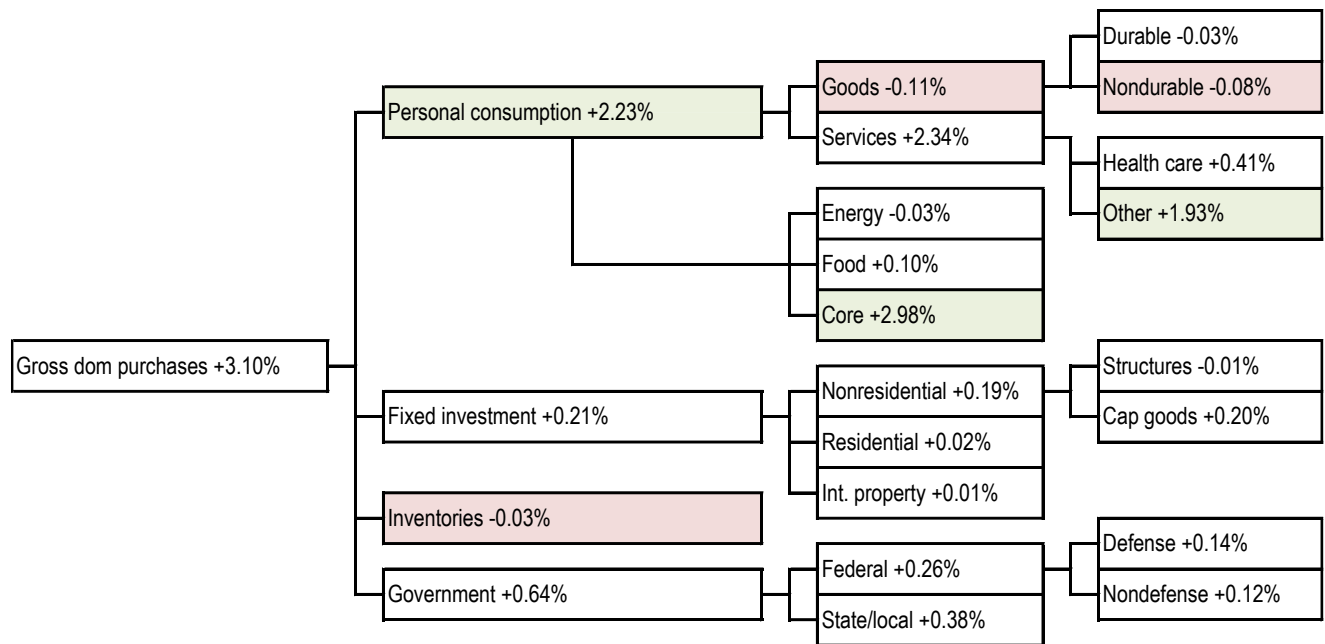
Source: Bureau of Economic Analysis

For more information contact us:

Donald Luskin: 214 550 2020 don@trendmacro.com
 Thomas Demas: 704 552 3625 tdemas@trendmacro.com

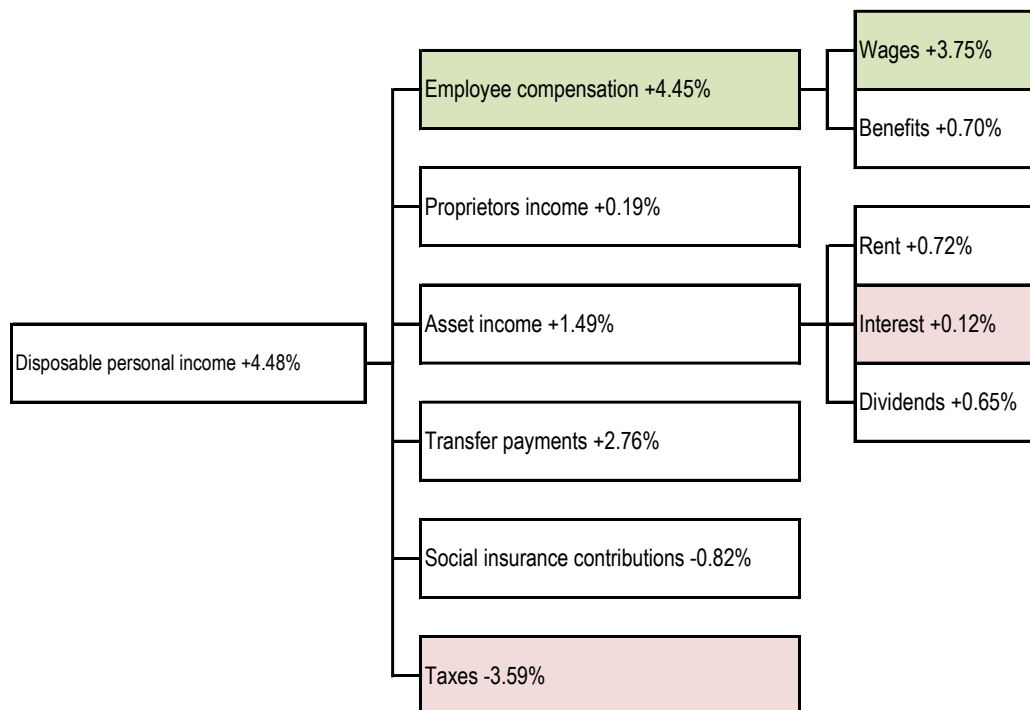
Price index data: what you need to know -- where did the inflation come from?

Contribution to sequential quarter change, SAAR Biggest change per detail-level: ■ positive ■ negative



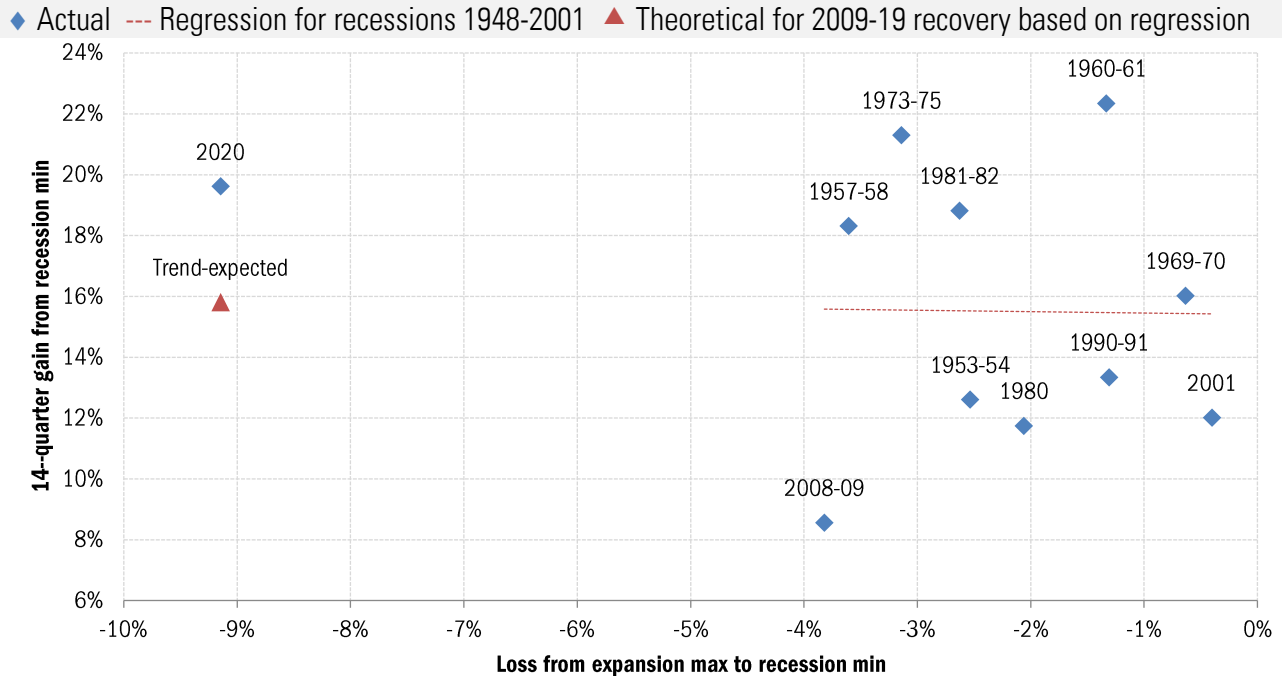
Personal income data: what you need to know -- where did the growth come from?

Contribution to nominal, seq quarter change, SAAR Biggest change per detail-level: ■ positive ■ negative



Source: Bureau of Economic Analysis, TrendMacro calculations

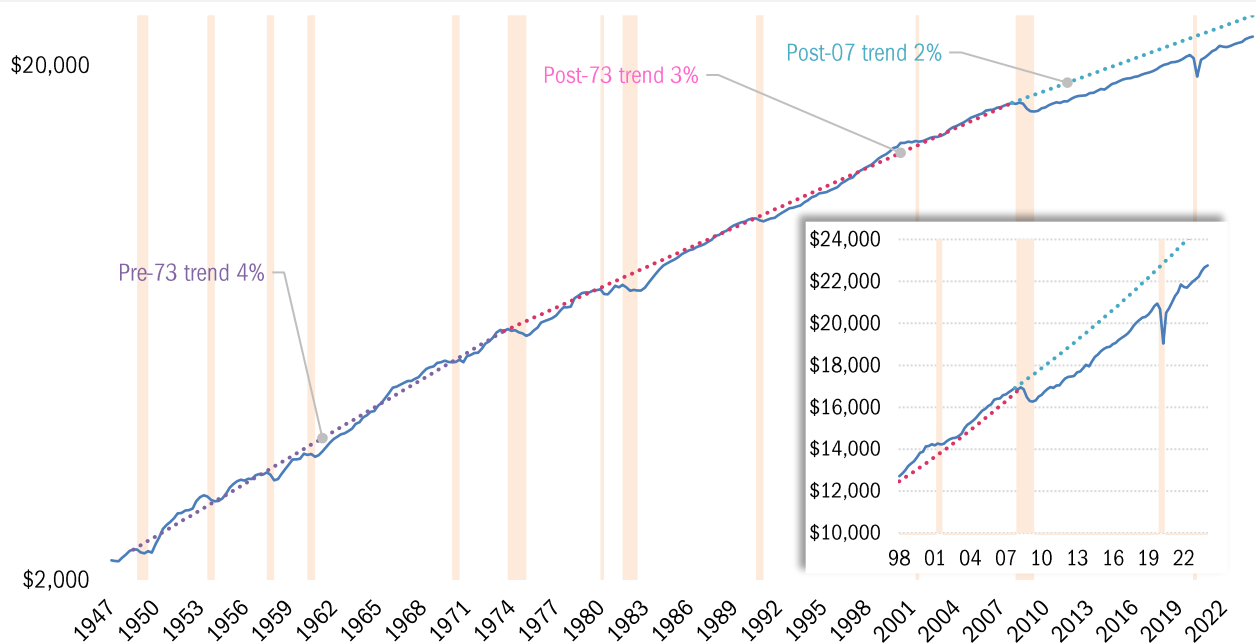
The Zarnowitz Law: severity of output loss in recession, versus vigor of recovery



Source: Bureau of Economic Analysis, National Bureau of Economic Research, TrendMacro calculations

The plucked string theory: GDP reverts to trend after perturbation

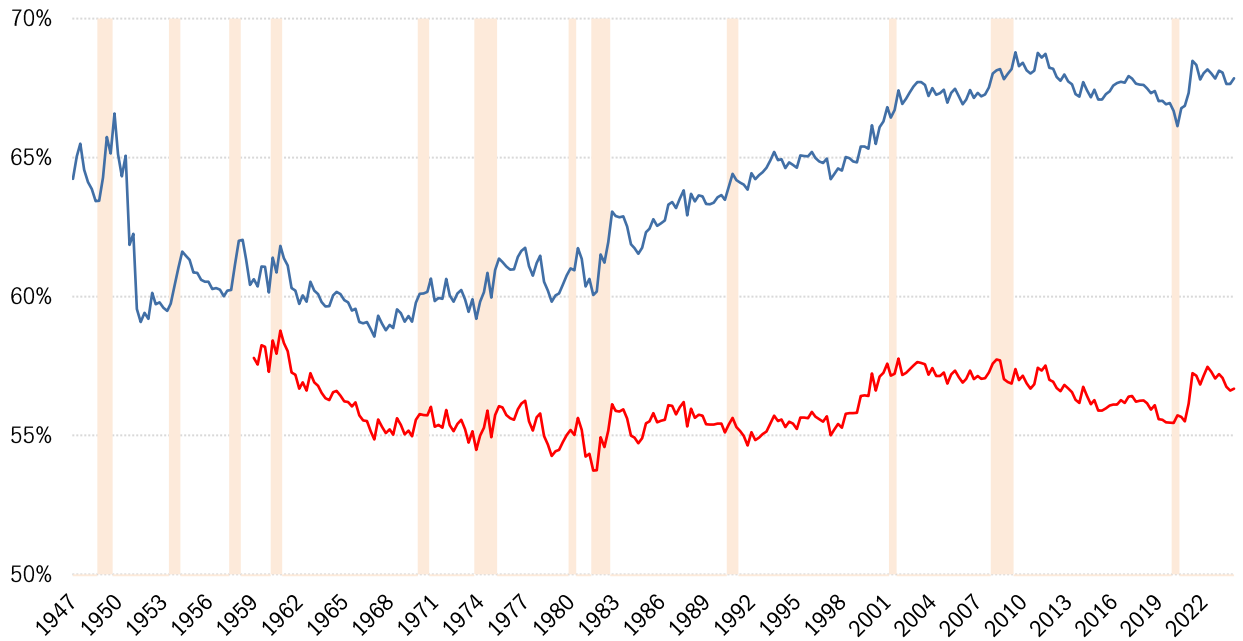
— Real GDP, USD billions, log scale - - - '47-'74 3.99% - - - '74-'07 trend 3.02% - - - Post-'07 trend ■ Recession



Source: Bureau of Economic Analysis, National Bureau of Economic Research, TrendMacro calculations

"New normal" watch: personal consumption share of nominal GDP

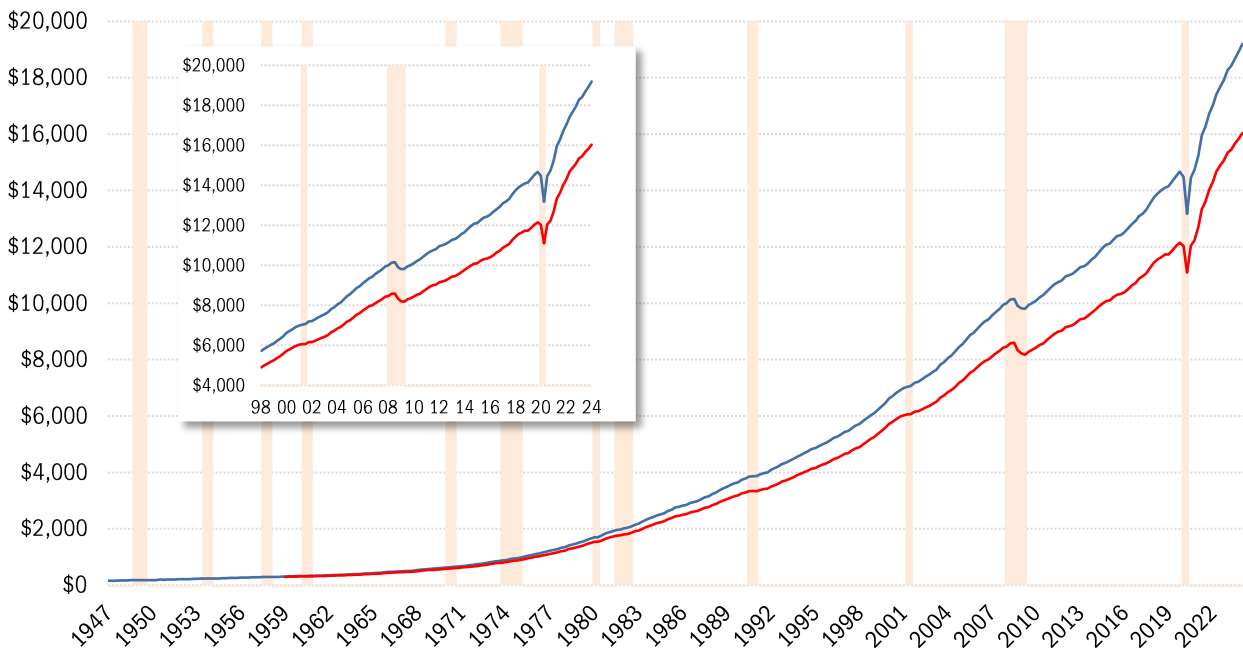
— Personal consumption expenditures — Ex-health care services — Recession



Source: Bureau of Economic Analysis, National Bureau of Economic Research, TrendMacro calculations

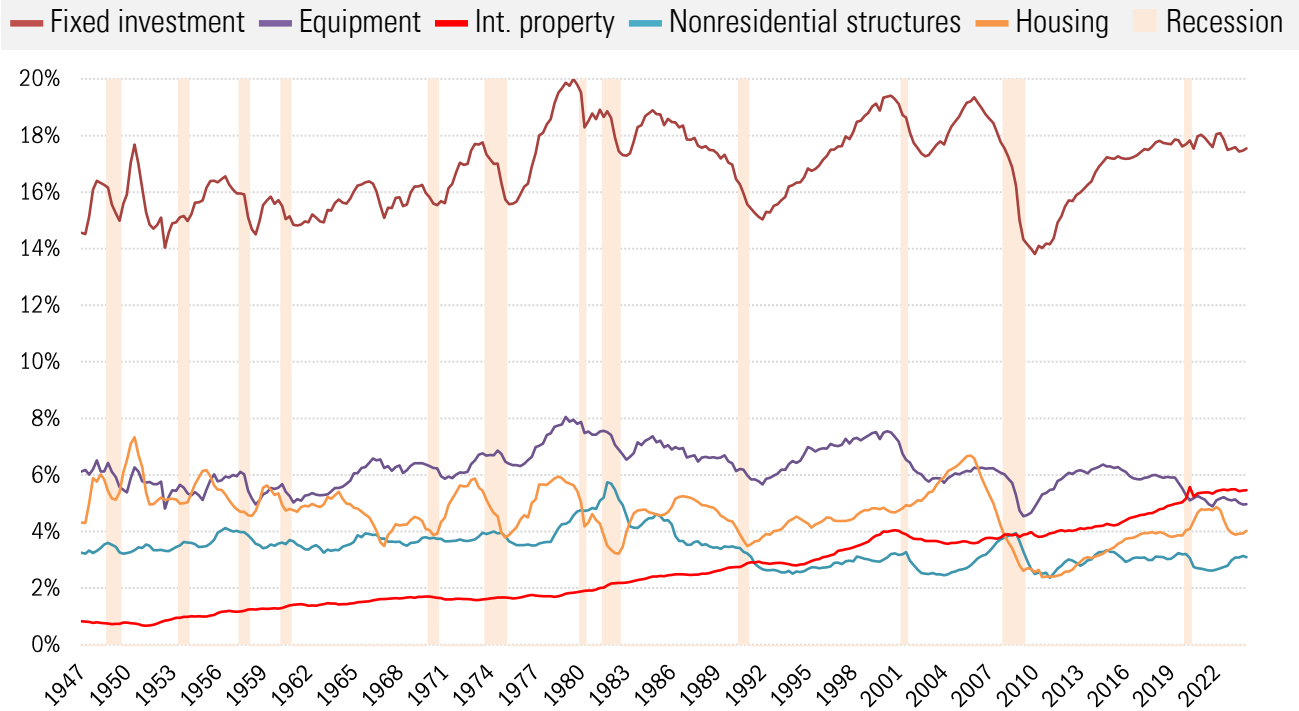
"New normal" watch: nominal personal consumption expenditures

USD billions — Personal consumption expenditures — Ex-health care services — Recession



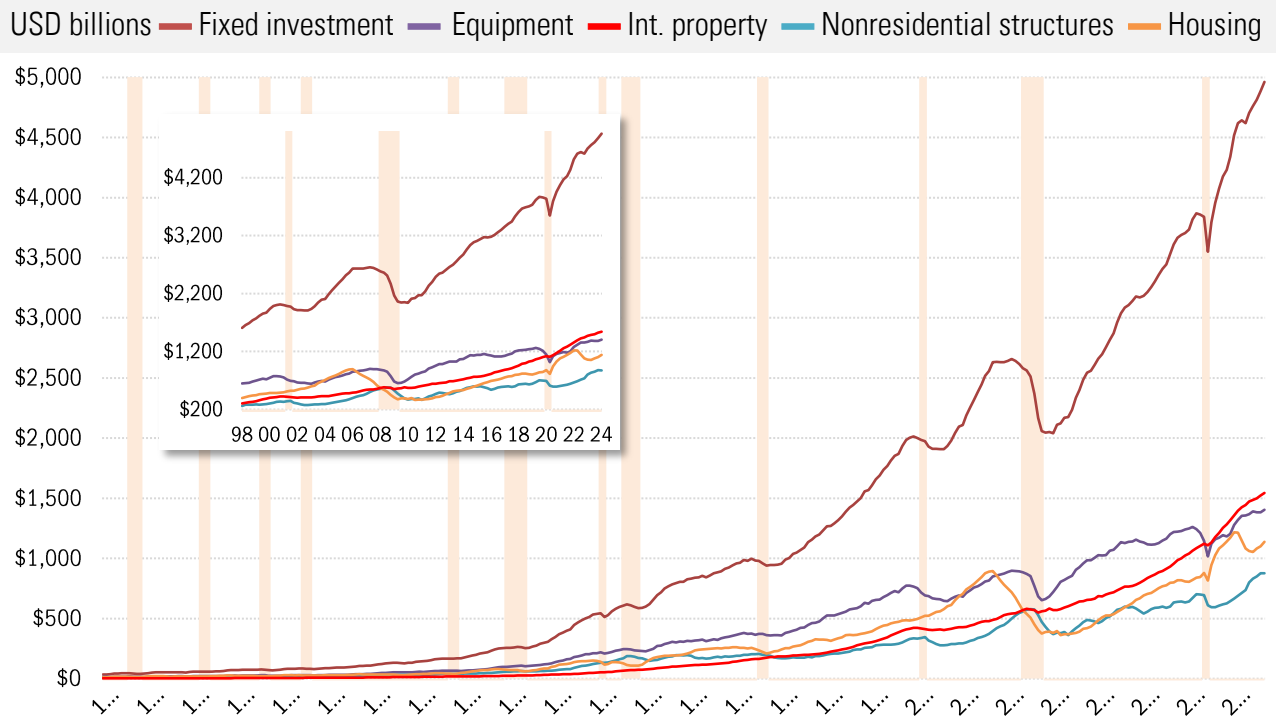
Source: Bureau of Economic Analysis, National Bureau of Economic Research, TrendMacro calculations

Capital at work: fixed investment share of nominal GDP



Source: Bureau of Economic Analysis, National Bureau of Economic Research, TrendMacro calculations

Capital at work: nominal fixed investment



Source: Bureau of Economic Analysis, National Bureau of Economic Research, TrendMacro calculations