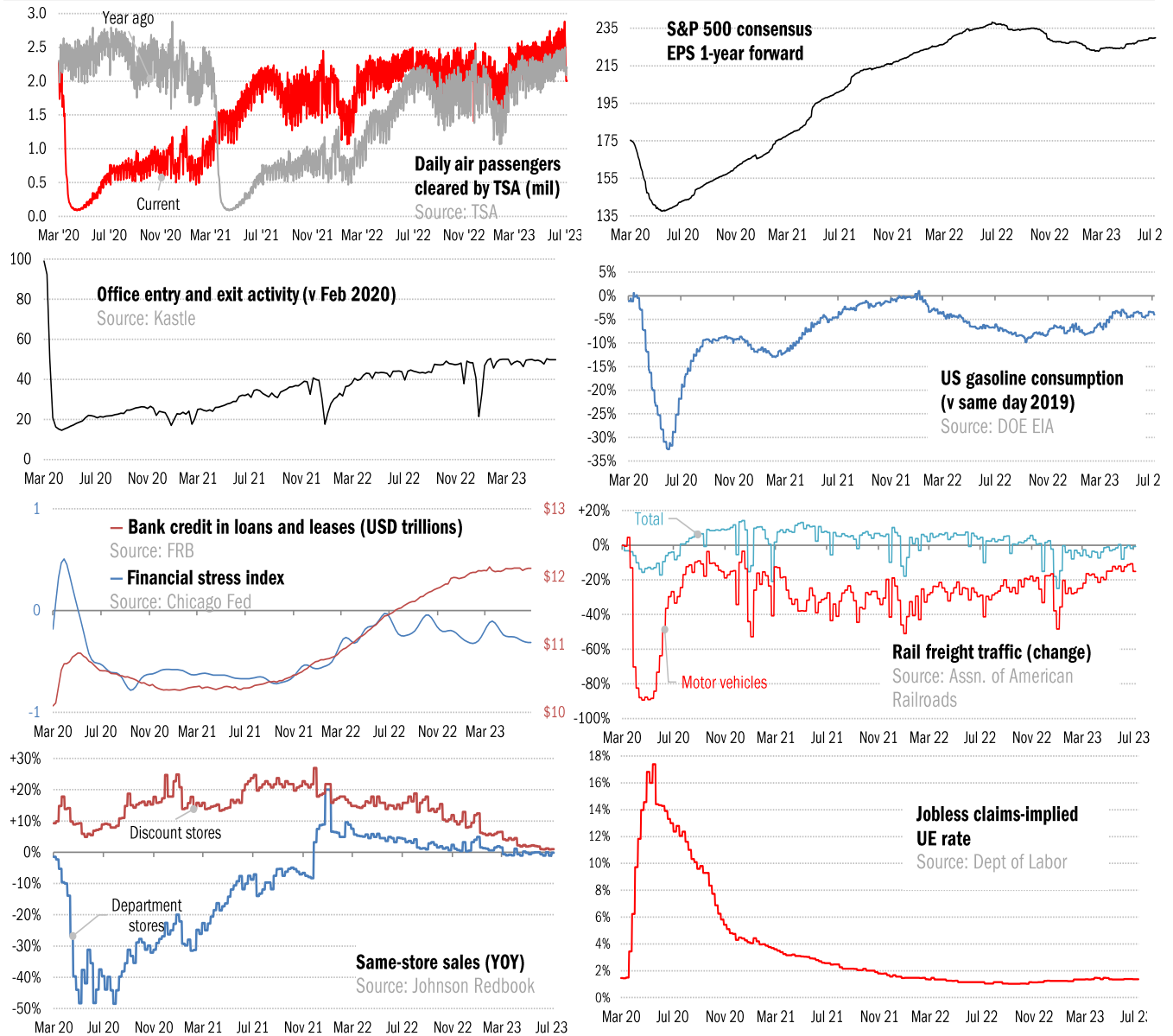


Data Insights: High-Frequency Post-Virus US Recovery Monitor

Thursday, July 6, 2023

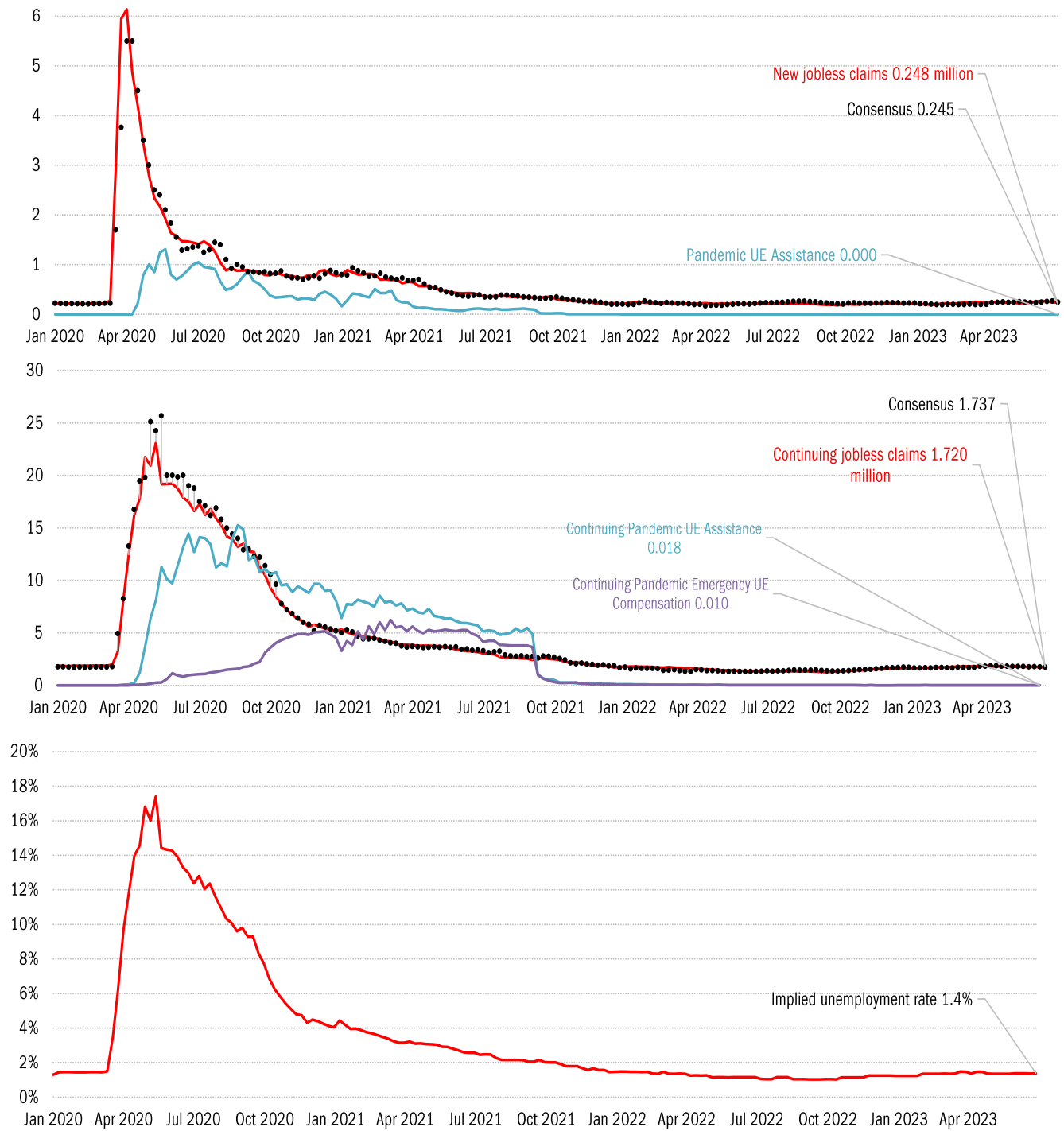
The US high-frequency macro data dashboard

(state level and other detail in subsequent charts)



Source: As indicated, TrendMacro calculations

High-frequency view of the US labor market: weekly unemployment claims (millions)

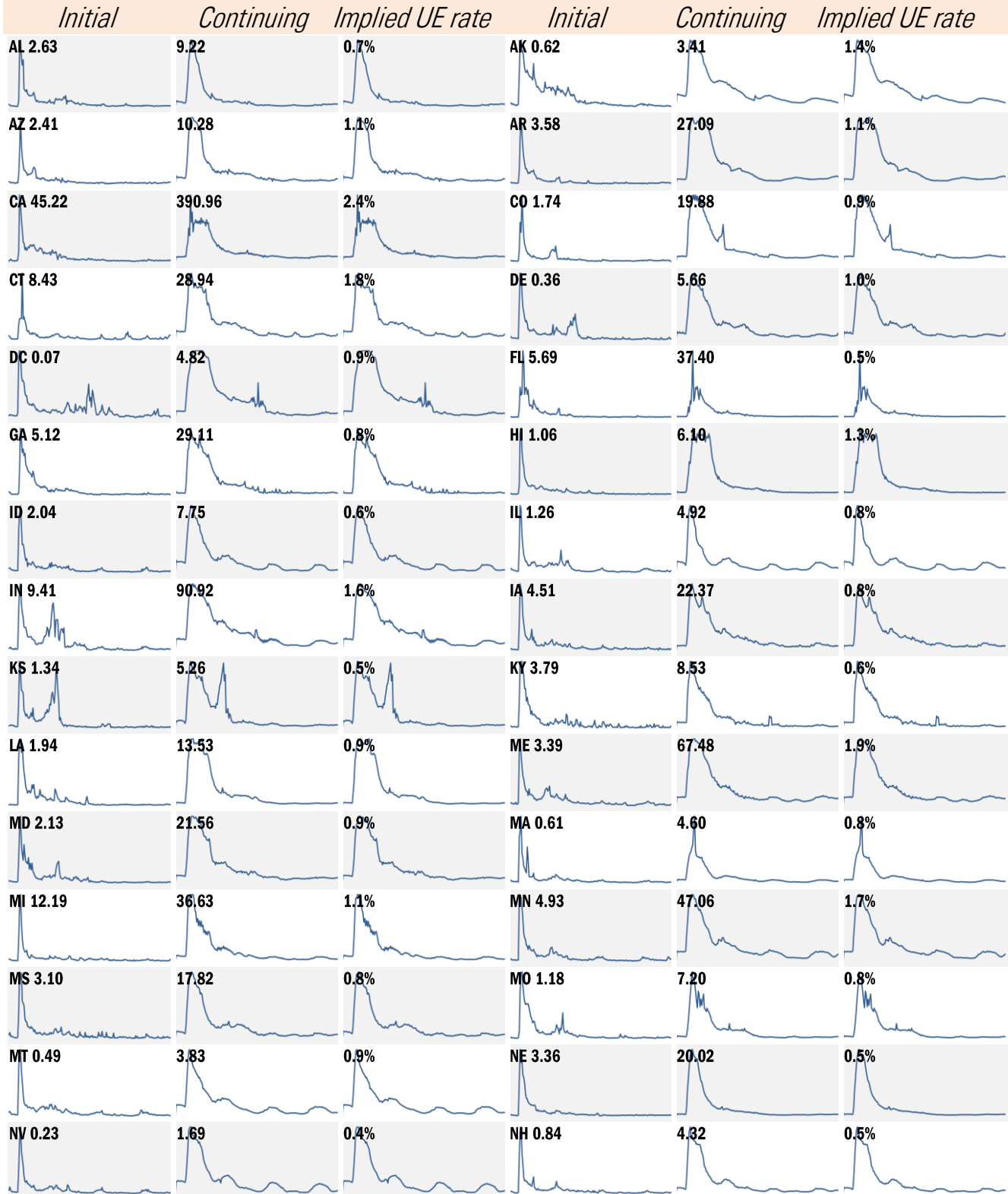


Source: Department of Labor, Bloomberg, TrendMacro calculations

For more information contact us:

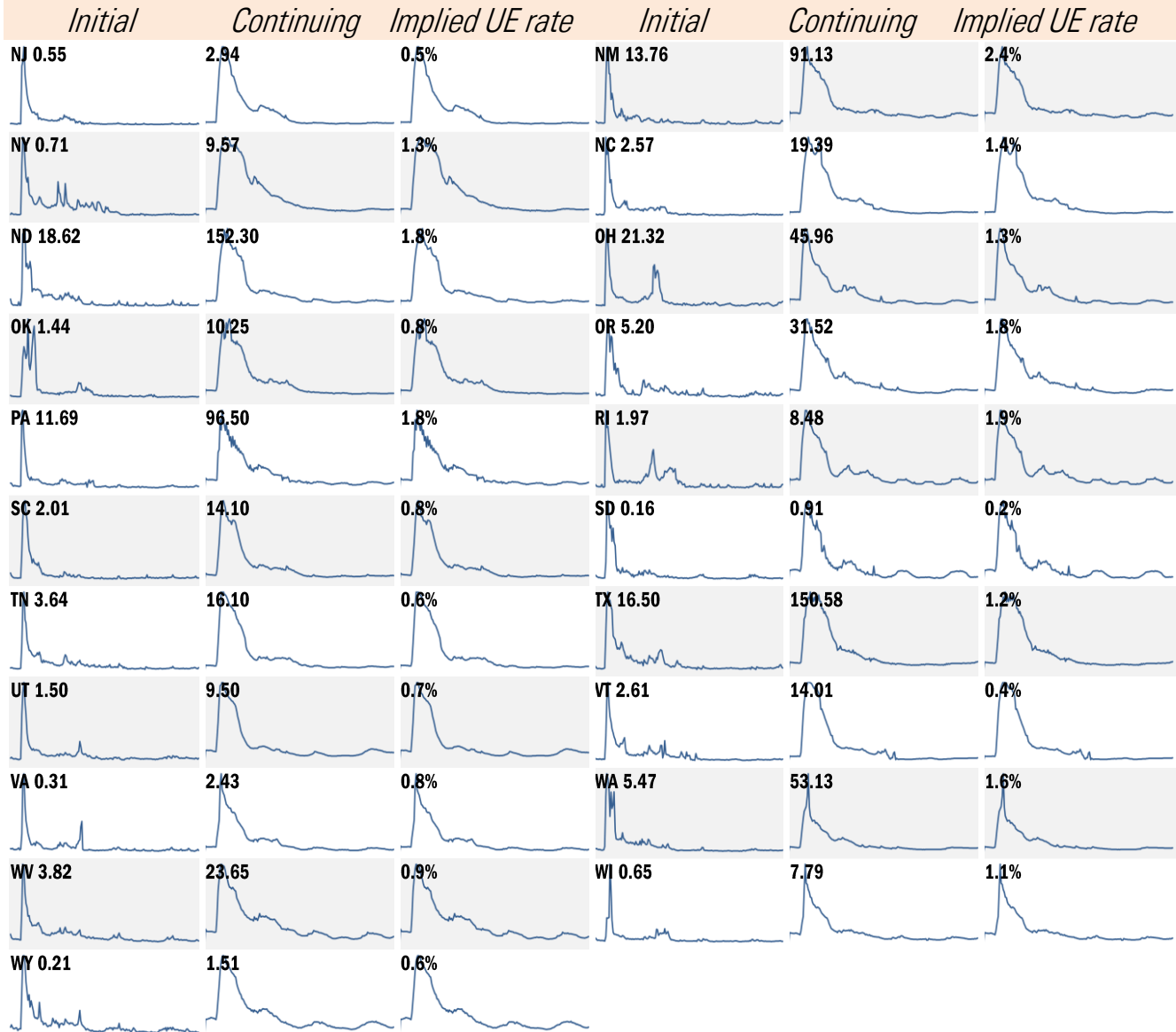
Donald Luskin: 214 550 2020 don@trendmacro.com
 Thomas Demas: 704 552 3625 tdemas@trendmacro.com

State by state unemployment insurance claims (thousands) January 2020 to present



Source: Department of Labor, TrendMacro calculations

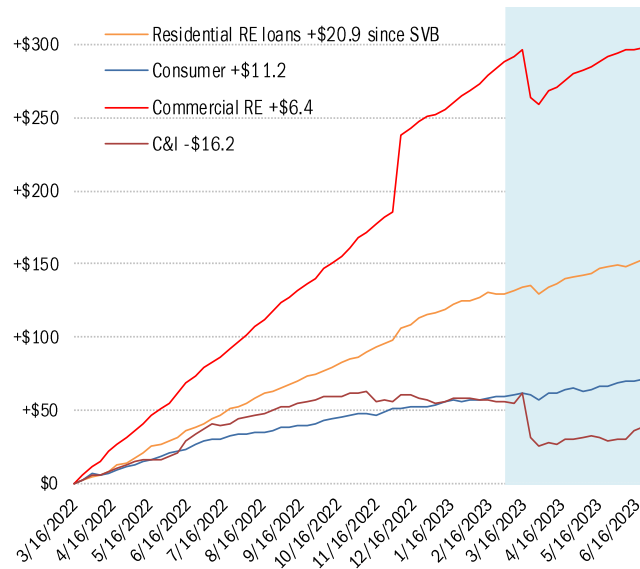
State by state unemployment insurance claims (thousands) January 2020 to present



Source: Department of Labor, TrendMacro calculations

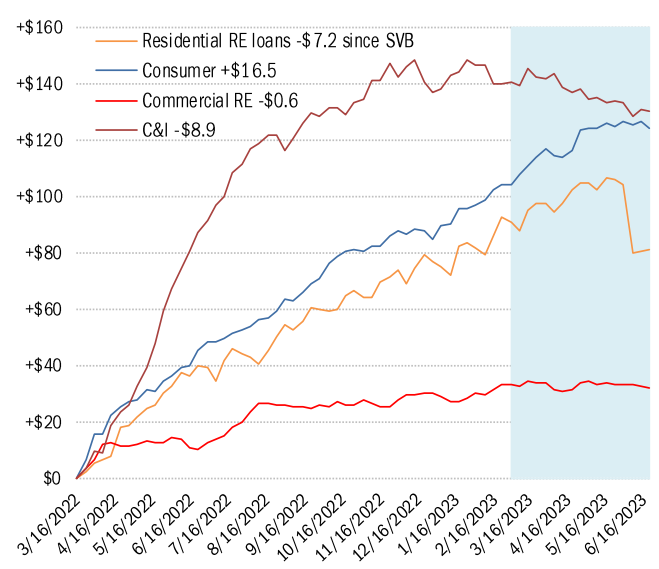
Asset and liability dynamics in domestically chartered commercial banks

Cumulative change in assets (USD billions)
Small banks

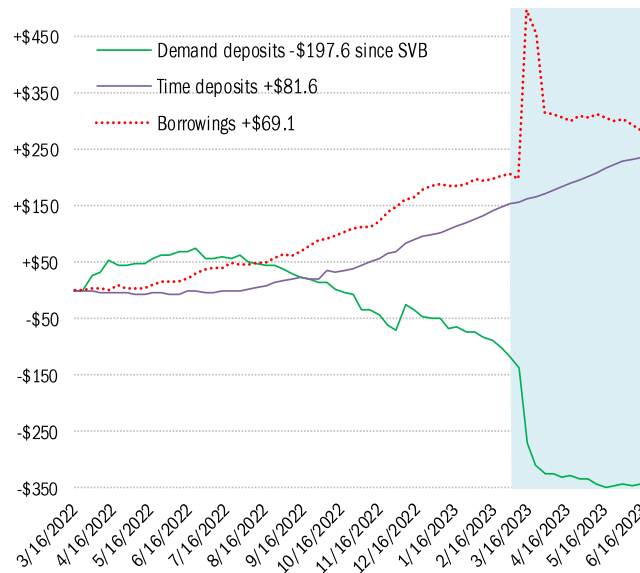


Cumulative change in assets (USD billions)
Large banks

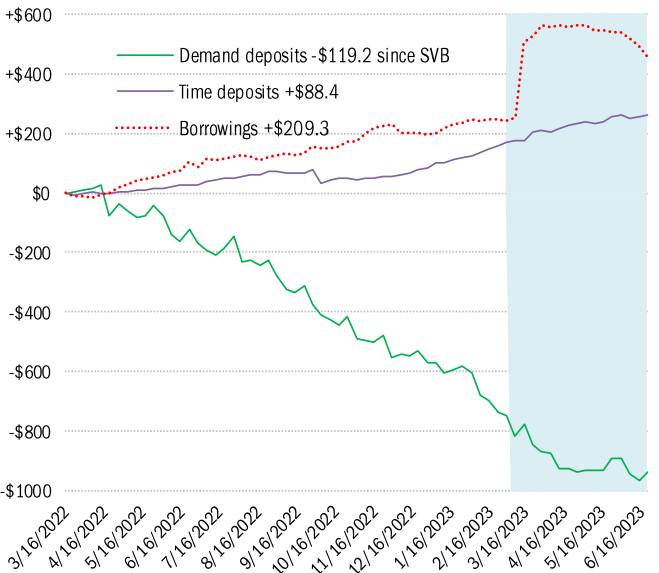
As of Jun 21



Cumulative change in liabilities (USD billions)
Small banks



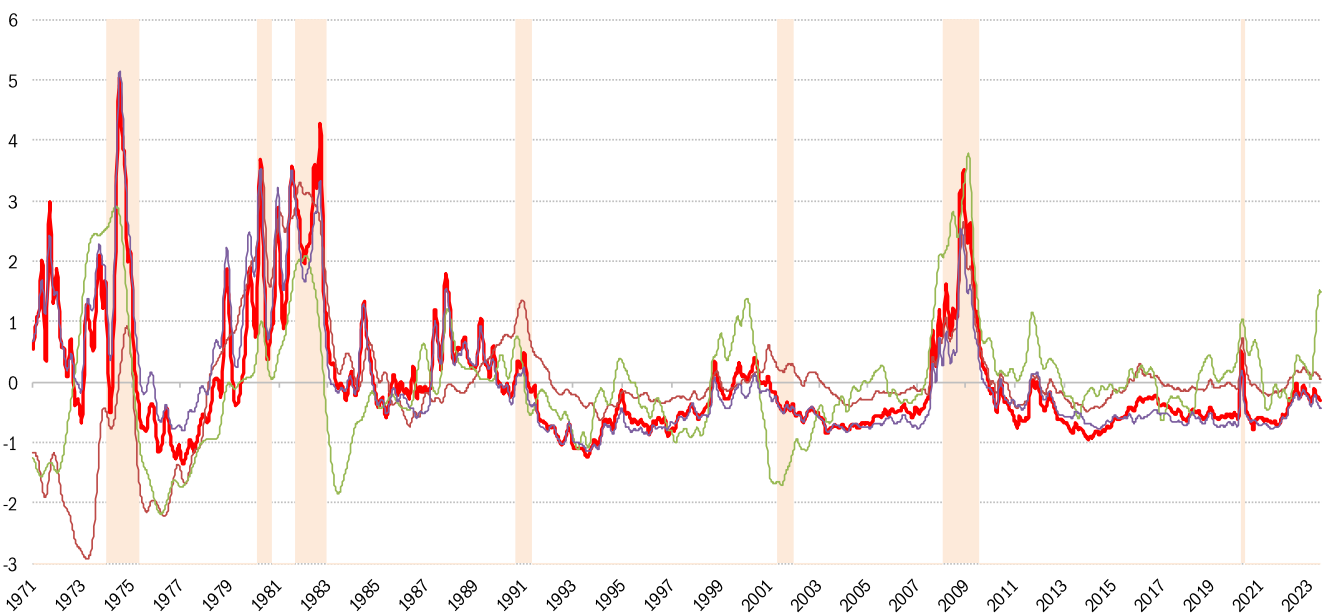
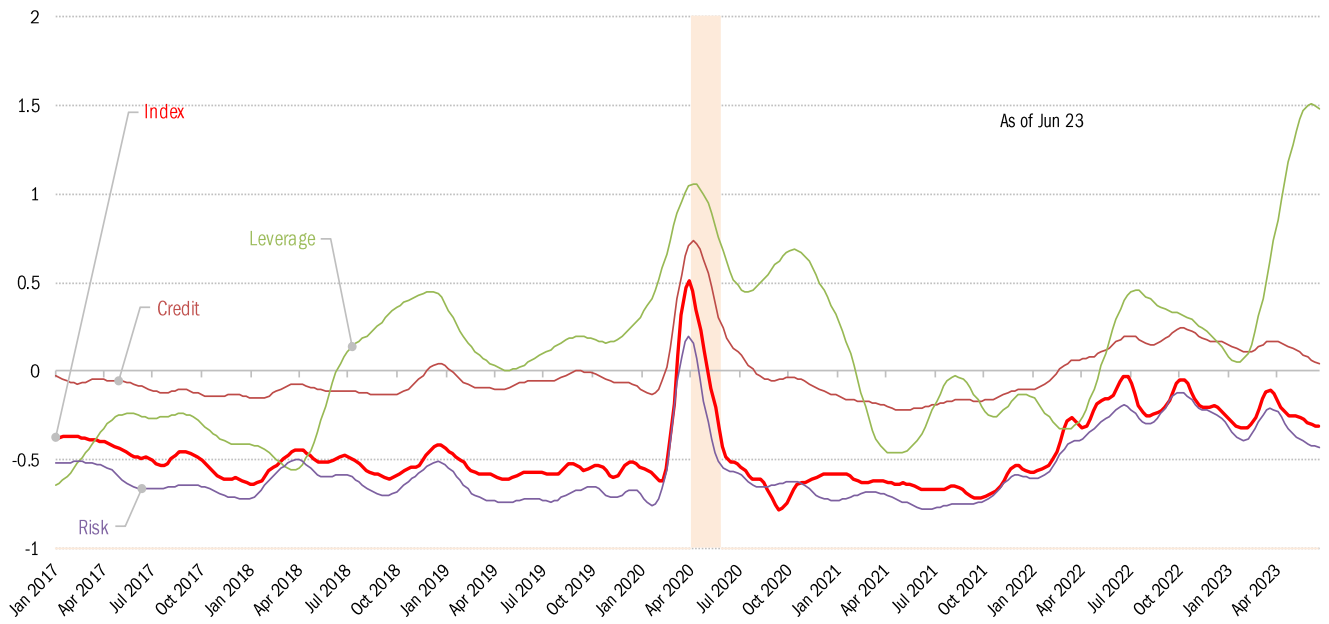
Cumulative change in liabilities (USD billions)
Large banks



Source: [Federal Reserve Board Report H.8](#), TrendMacro calculations

House of straw or house of brick? Chicago Fed Financial Conditions Index

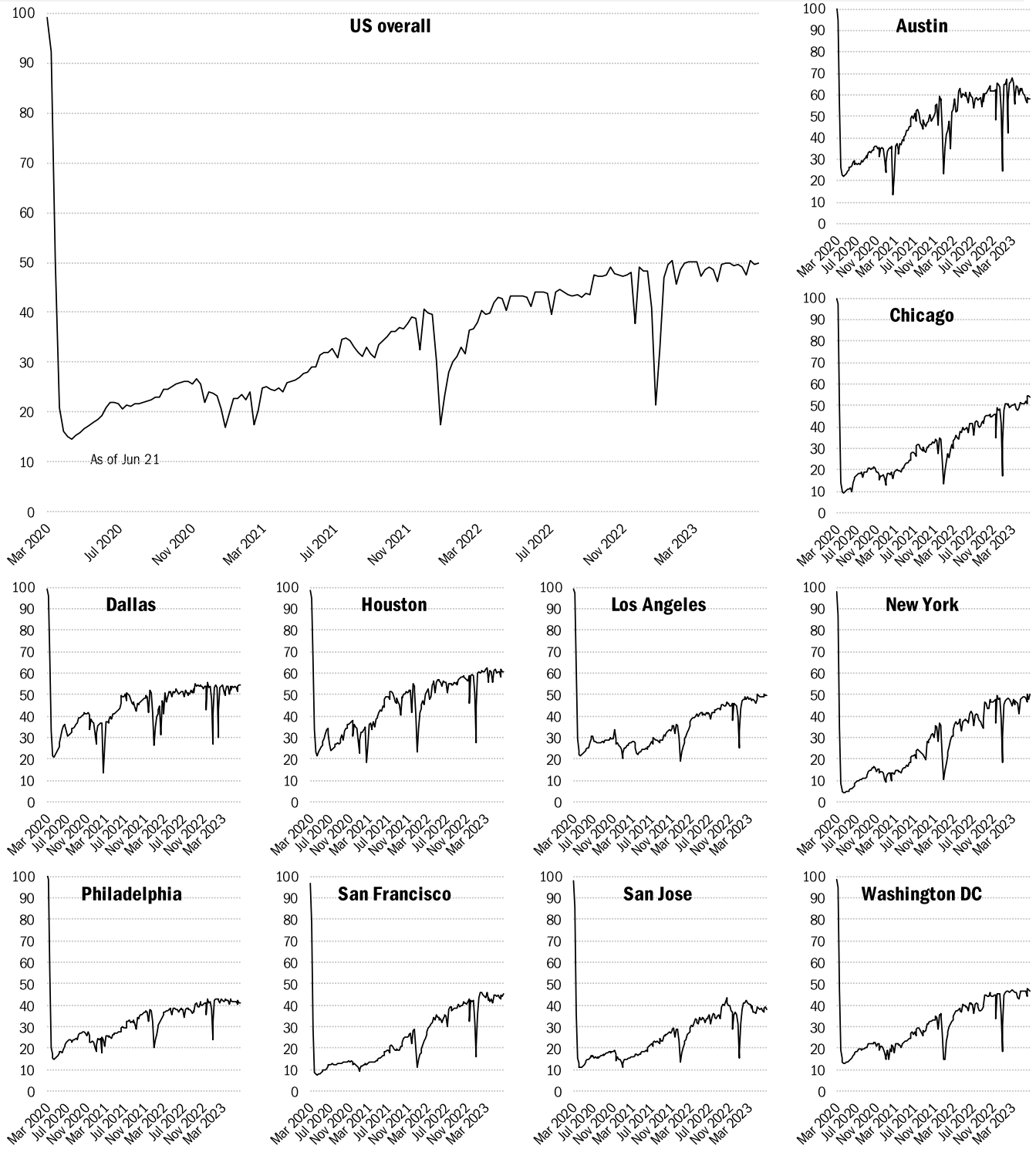
Higher values: tight conditions Lower values: loose conditions



Source: [Chicago Fed](#), TrendMacro calculations

Returning to the American office

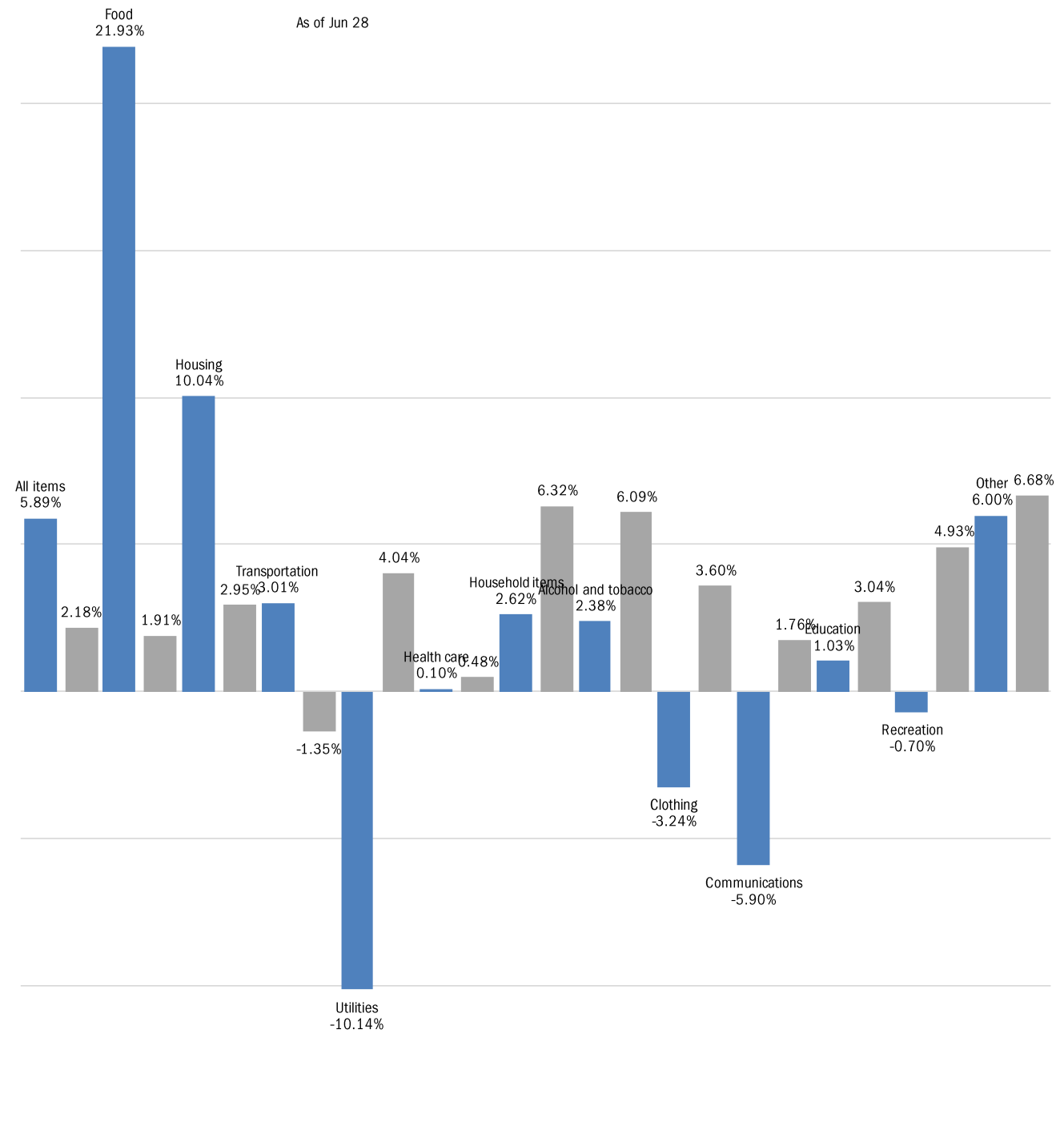
Indices of office capacity utilization based on weekly door-security access data



Source: [Kastle Systems](#), TrendMacro calculations

Inflation in real time, based on Truflation's daily telemetry

■ Trailing 31-day consumer price inflation, annual rate ■ Trailing 365-day



Source: [Truflation](#), TrendMacro calculations