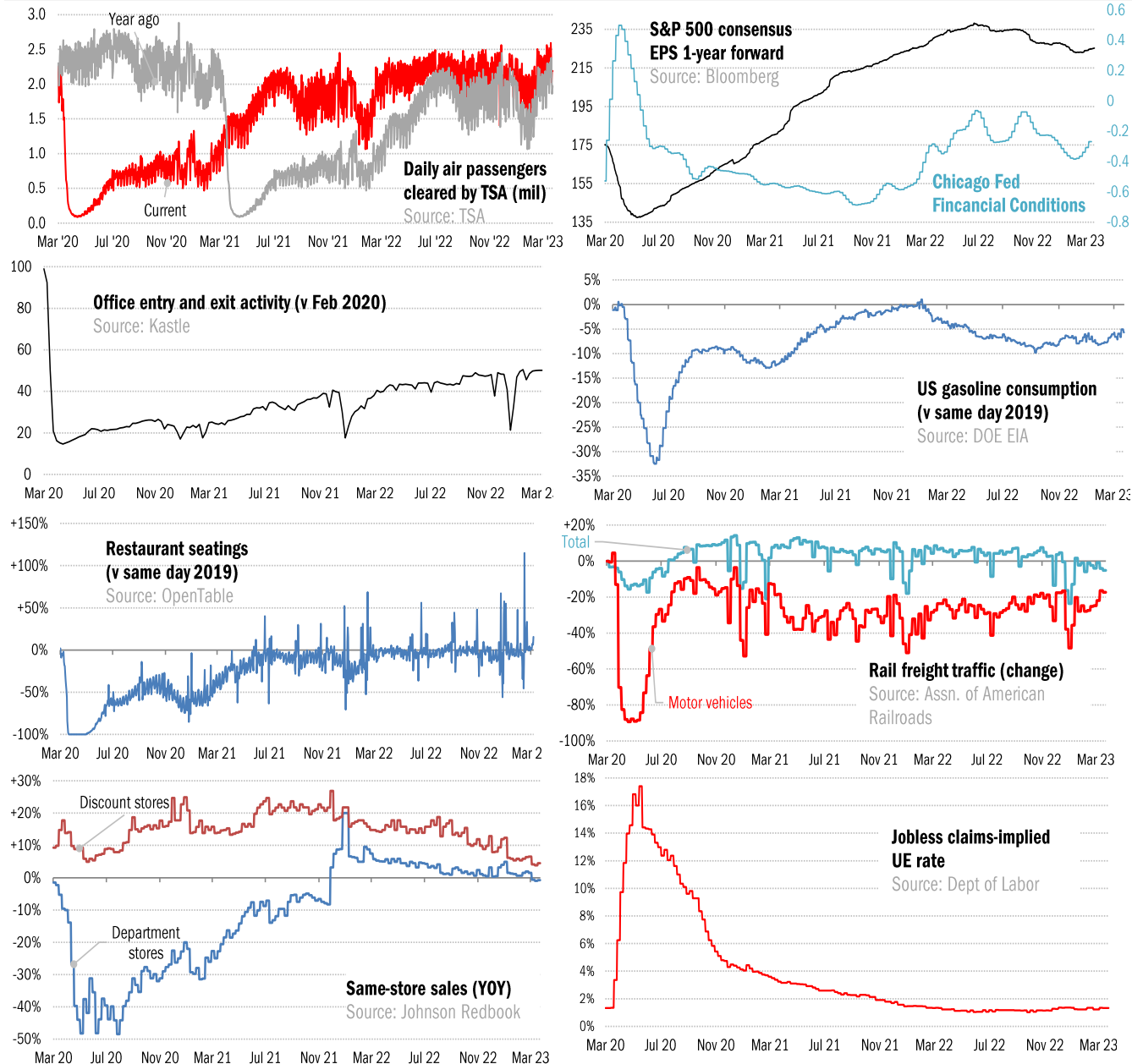


Data Insights: High-Frequency Post-Virus US Recovery Monitor

Thursday, March 23, 2023

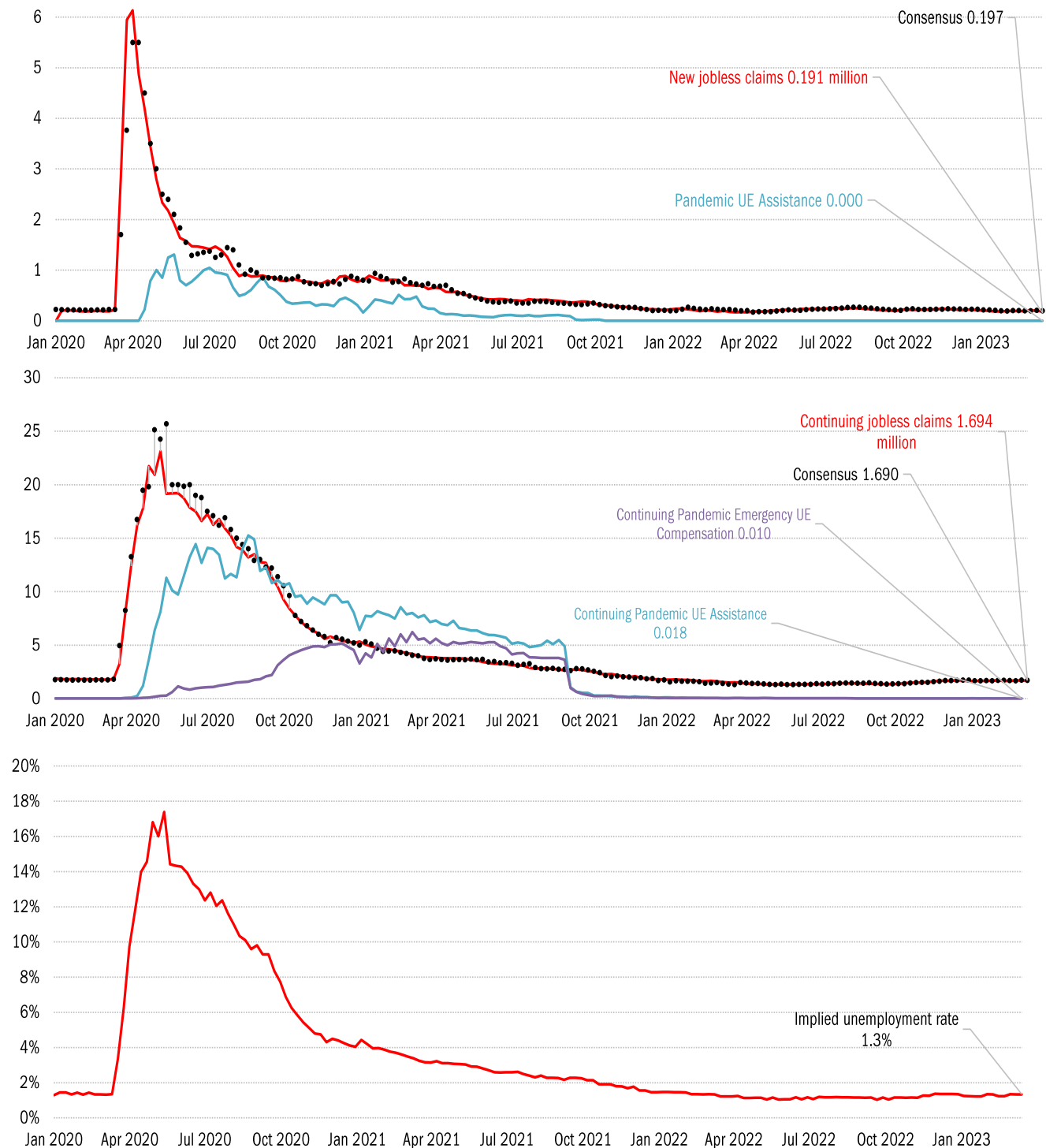
The US high-frequency macro data dashboard

(state level and other detail in subsequent charts)



Source: As indicated, TrendMacro calculations

High-frequency view of the US labor market: weekly unemployment claims (millions)



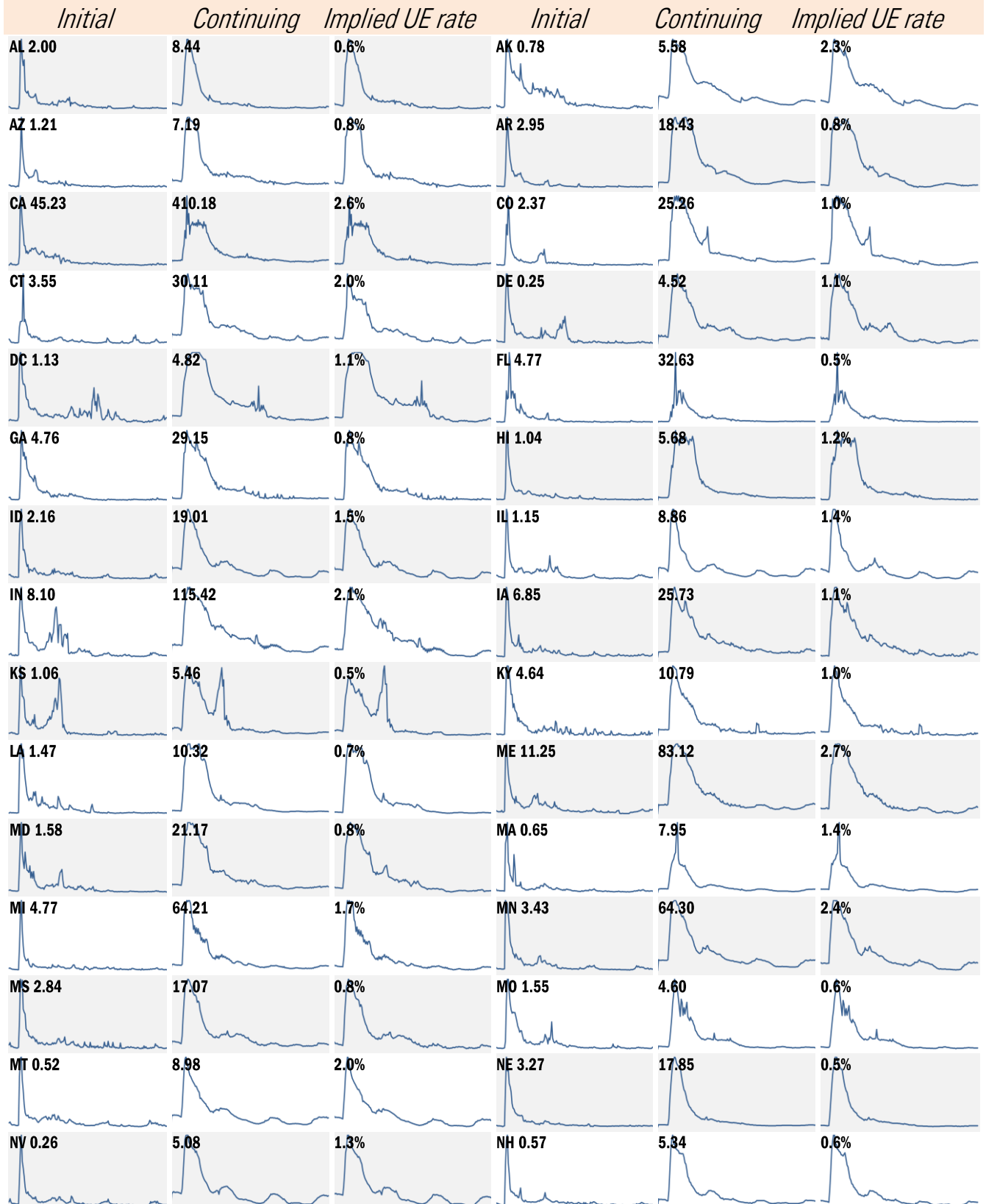
Source: Department of Labor, Bloomberg, TrendMacro calculations

For more information contact us:

Donald Luskin: 214 550 2020 don@trendmacro.com

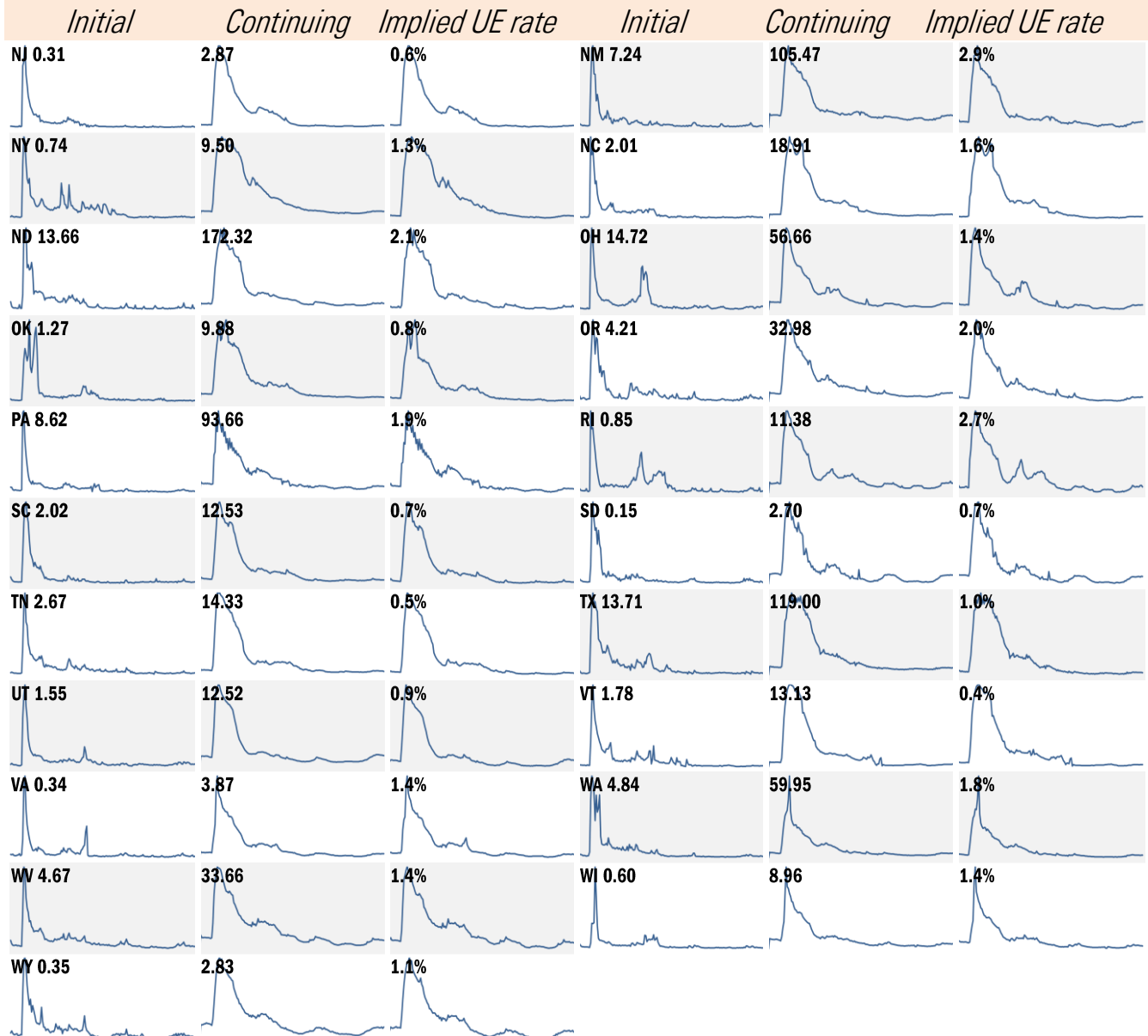
Thomas Demas: 704 552 3625 tdemas@trendmacro.com

State by state unemployment insurance claims (thousands) January 2020 to present



Source: Department of Labor, TrendMacro calculations

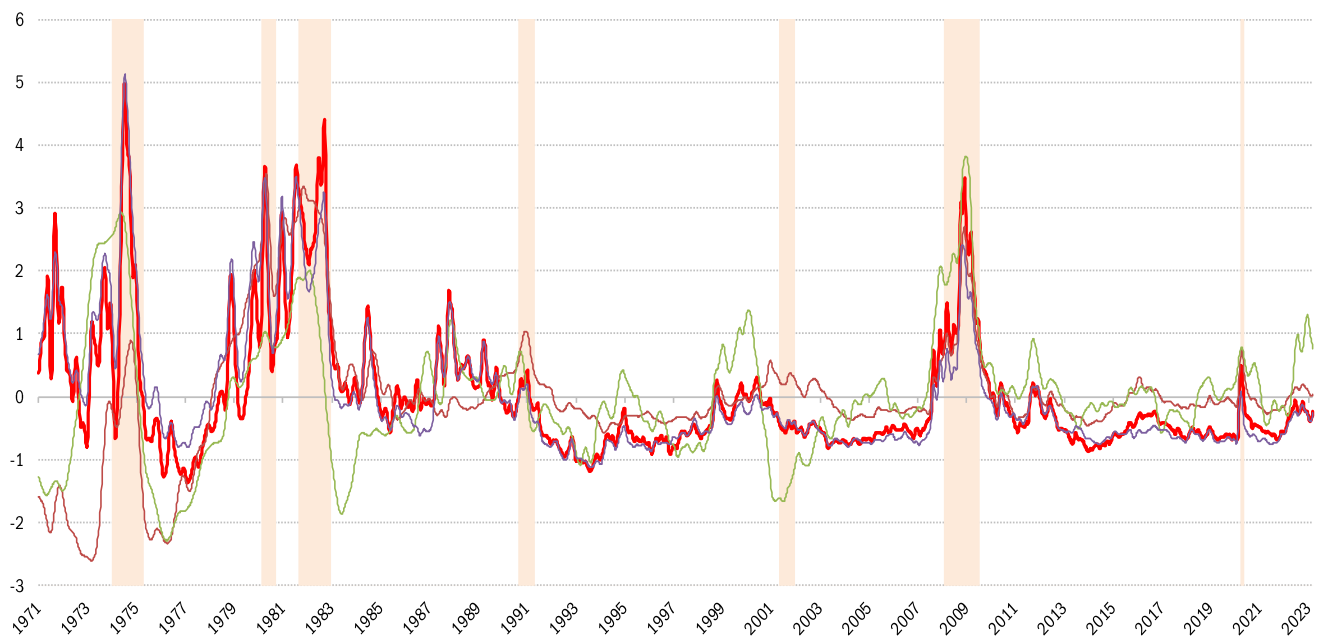
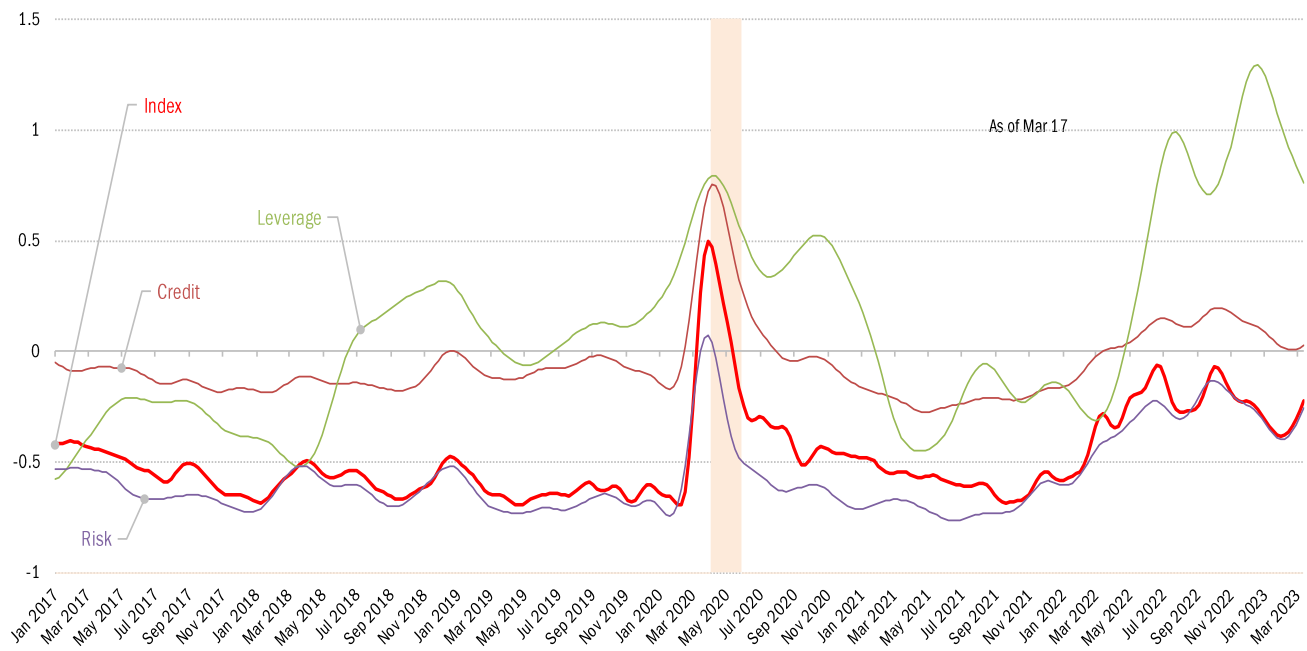
State by state unemployment insurance claims (thousands) January 2020 to present



Source: Department of Labor, TrendMacro calculations

House of straw or house of brick? Chicago Fed Financial Conditions Index

Higher values: tight conditions Lower values: loose conditions



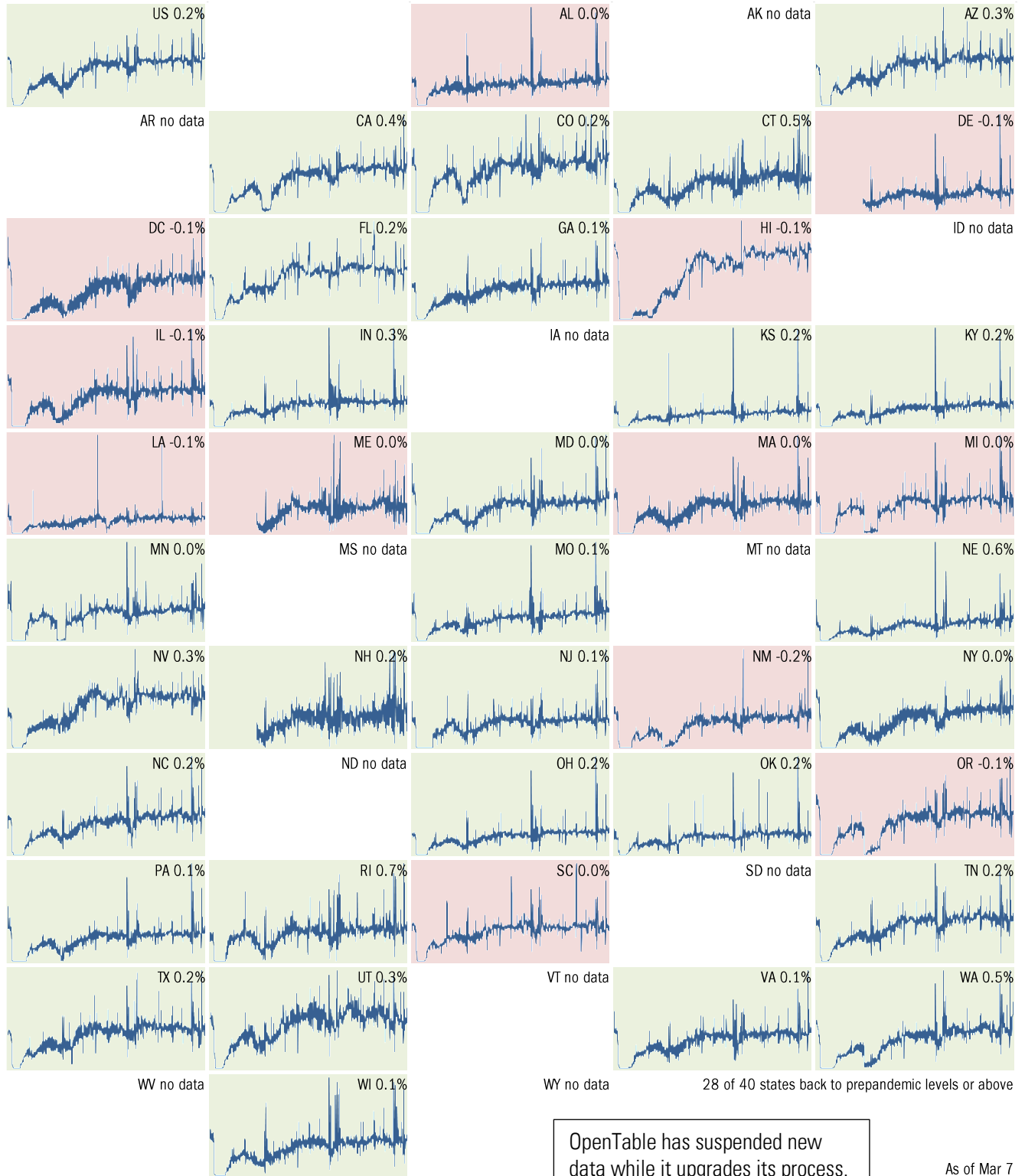
Source: [Chicago Fed](#), TrendMacro calculations

Make America eat again:

Seated diners in restaurants versus 2019... Feb 2020 to present

Better

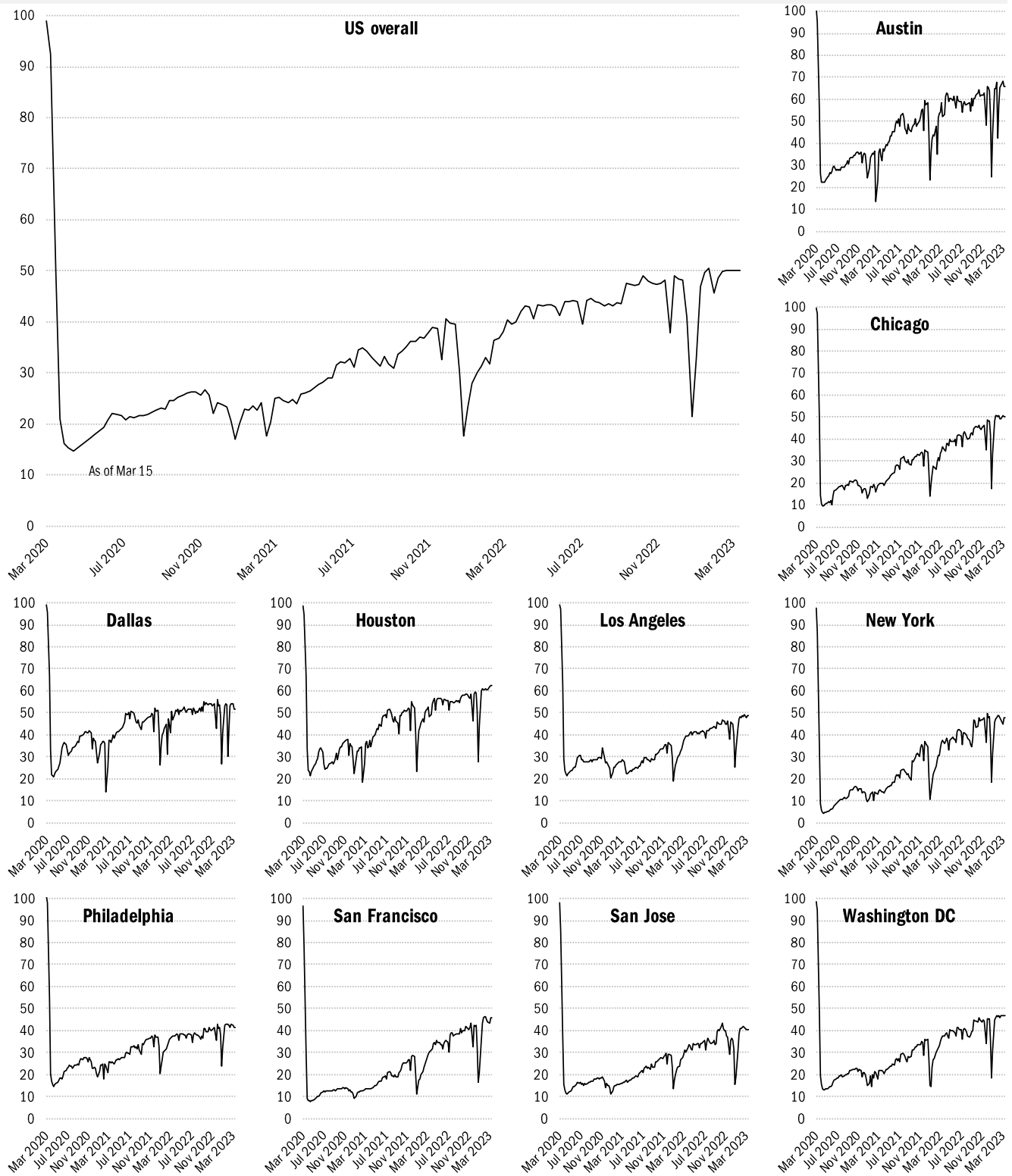
Worse



Source: [Open Table](#), TrendMacro calculations

Returning to the American office

Indices of office capacity utilization based on weekly door-security access data



Source: [Kastle Systems](#), TrendMacro calculations