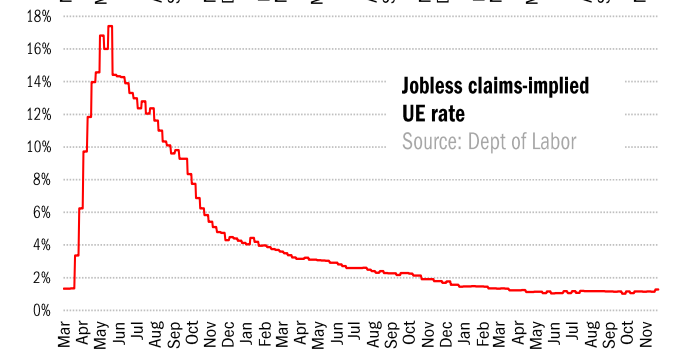
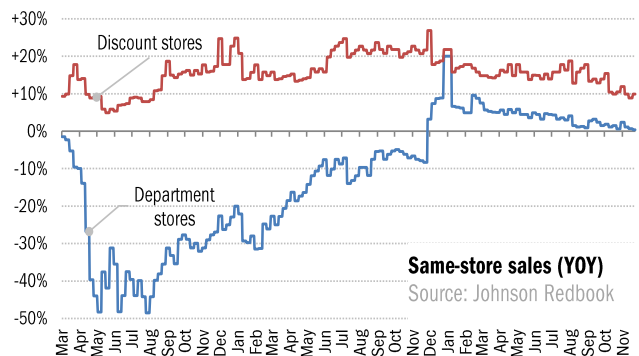
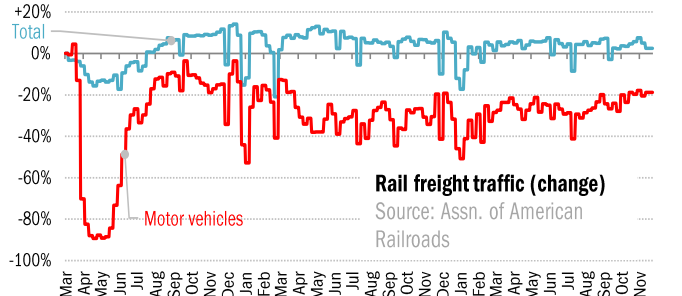
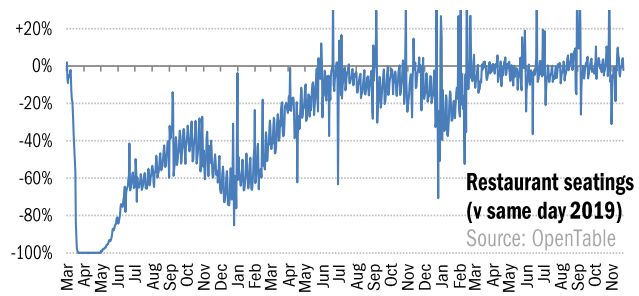
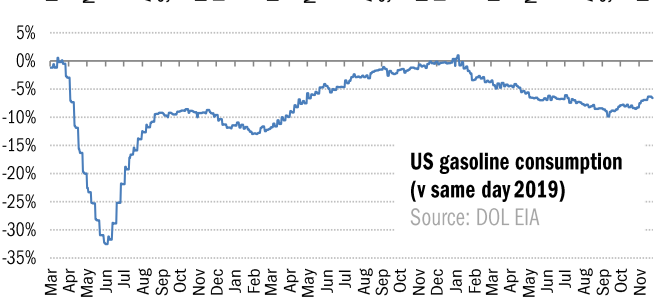
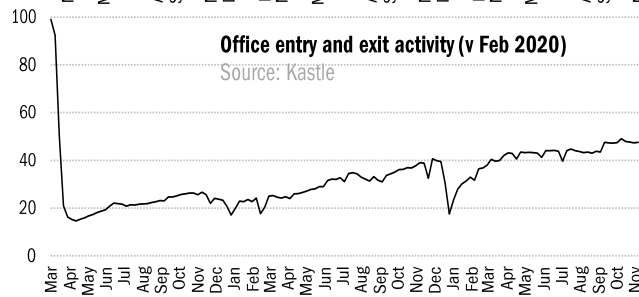
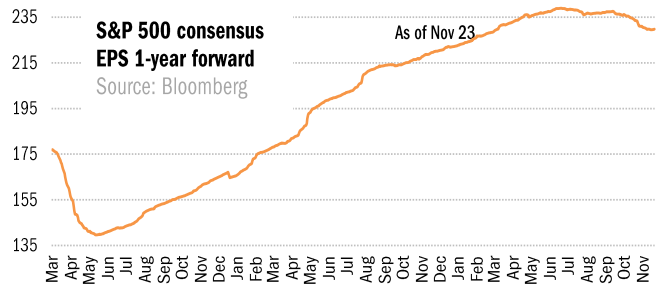
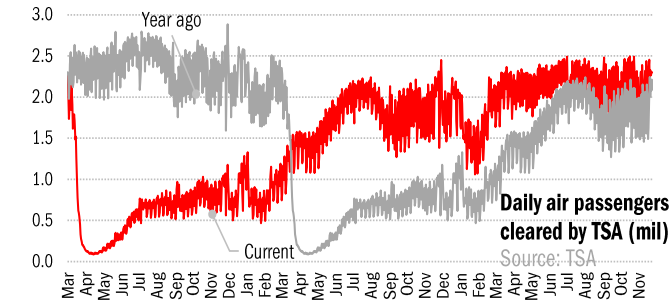


Data Insights: High-Frequency Post-Virus US Recovery Monitor

Wednesday, November 23, 2022

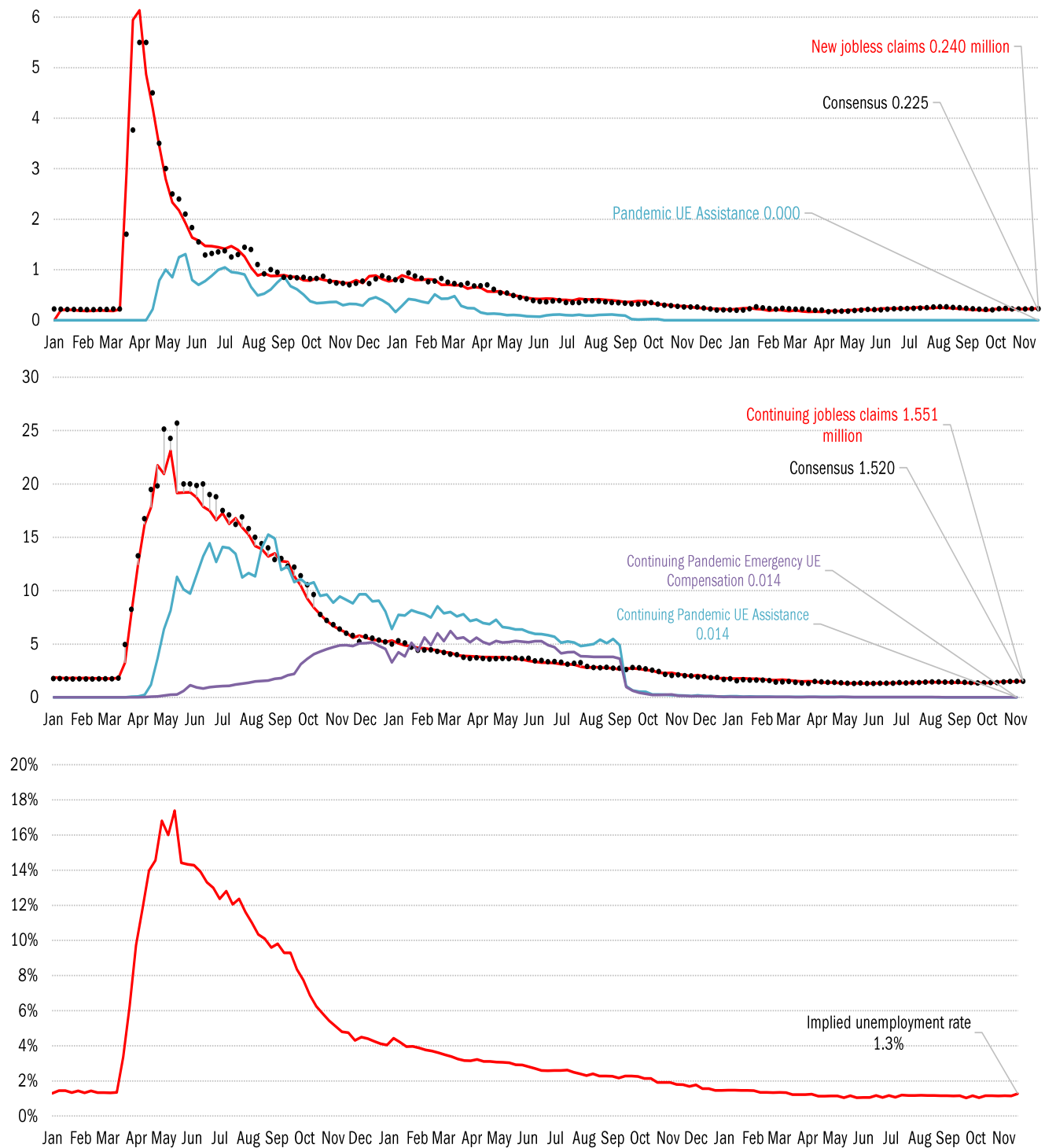
The US high-frequency macro data dashboard

(state level and other detail in subsequent charts)



Source: As indicated, TrendMacro calculations

High-frequency view of the US labor market: weekly unemployment claims (millions)

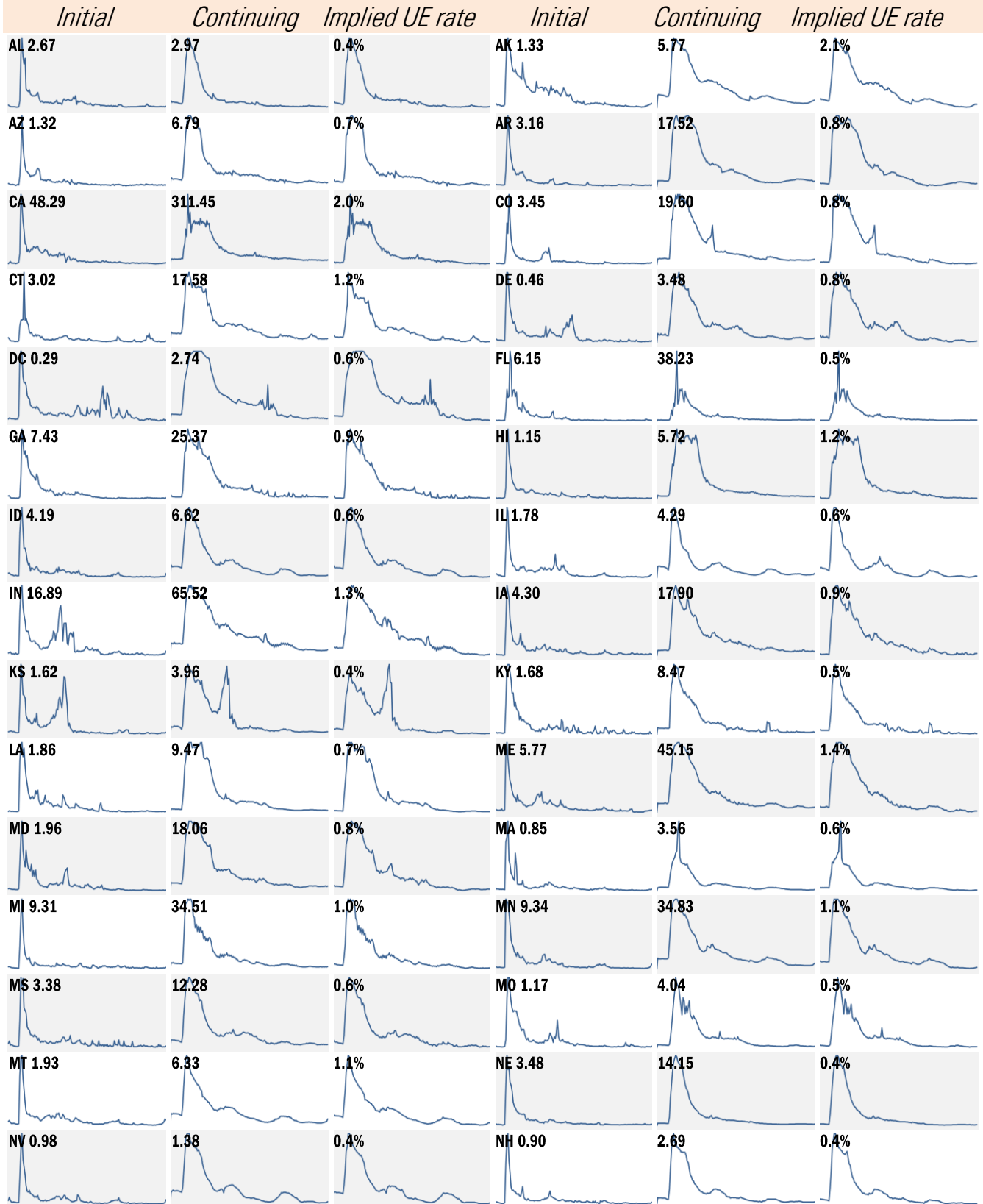


Source: Department of Labor, Bloomberg, TrendMacro calculations

For more information contact us:

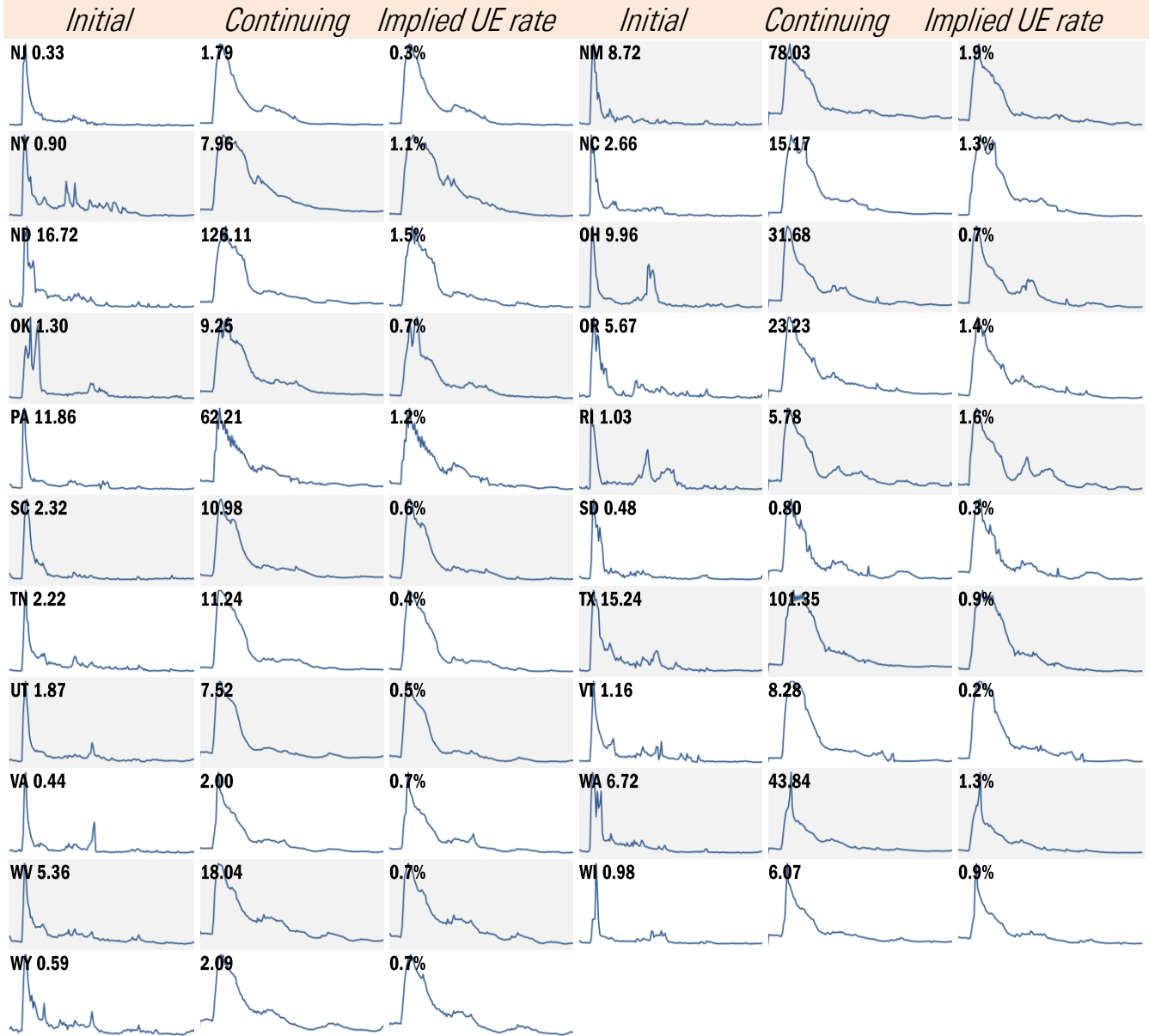
Donald Luskin: 312 273 6766 don@trendmacro.com
 Thomas Demas: 704 552 3625 tdemas@trendmacro.com

State by state unemployment insurance claims (thousands) January 2020 to present



Source: Department of Labor, TrendMacro calculations

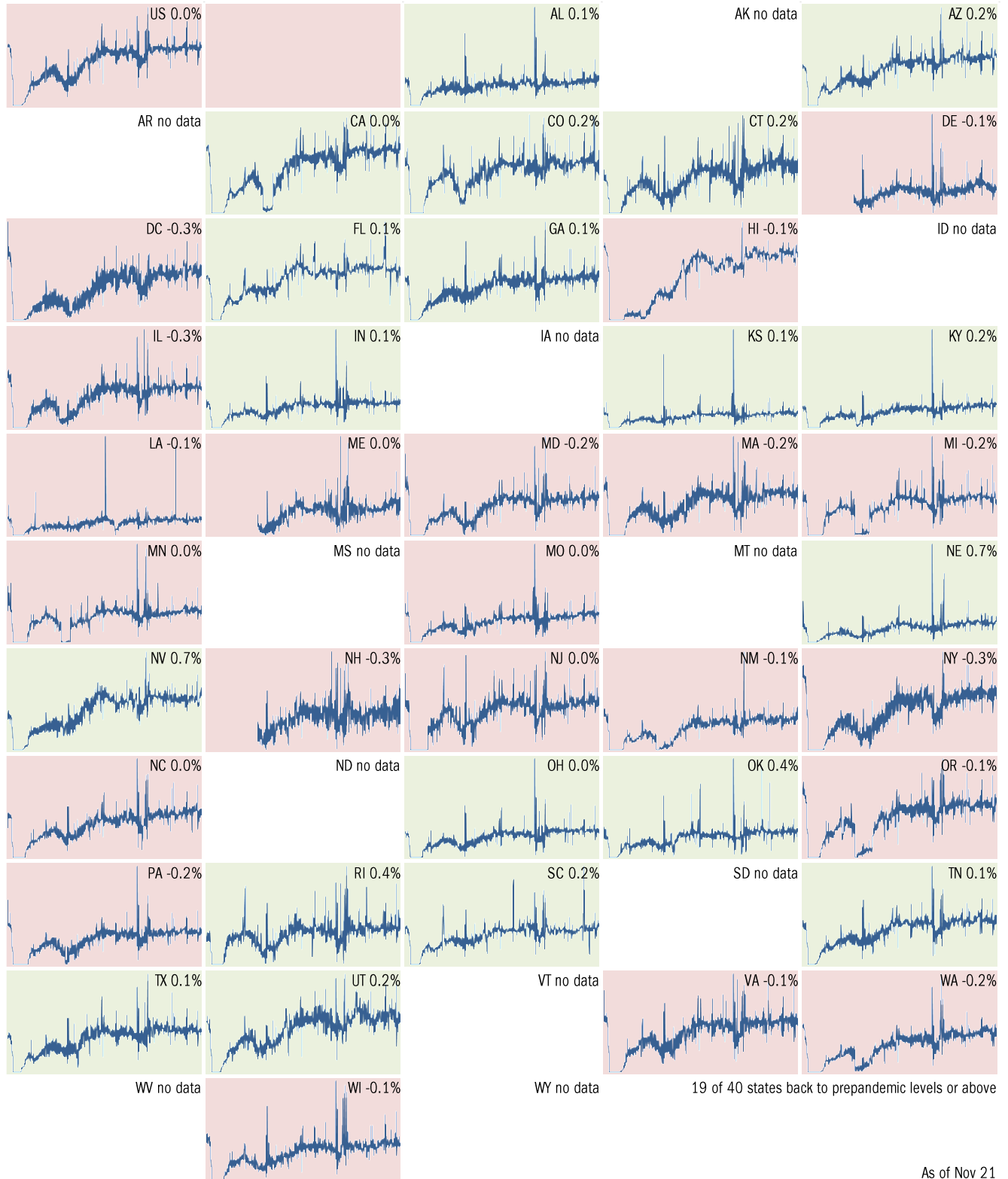
State by state unemployment insurance claims (thousands) January 2020 to present



Source: Department of Labor, TrendMacro calculations

Make America eat again:

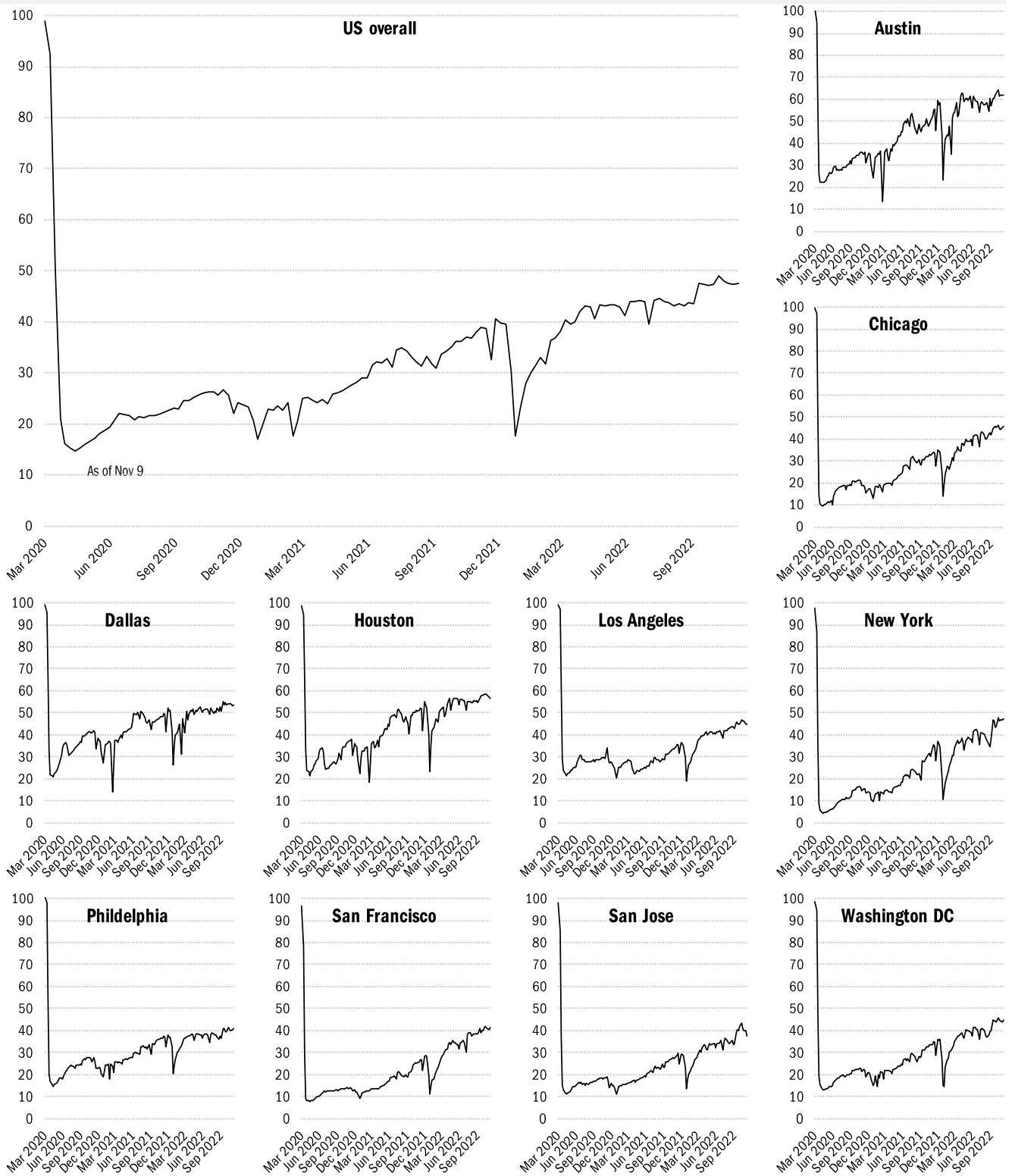
Seated diners in restaurants versus 2019... Feb 2020 to present ■ Better ■ Worse



Source: [Open Table](#), TrendMacro calculations

Returning to the American office

Indices of office capacity utilization based on weekly door-security access data



Source: [Kastle Systems](#), TrendMacro calculations