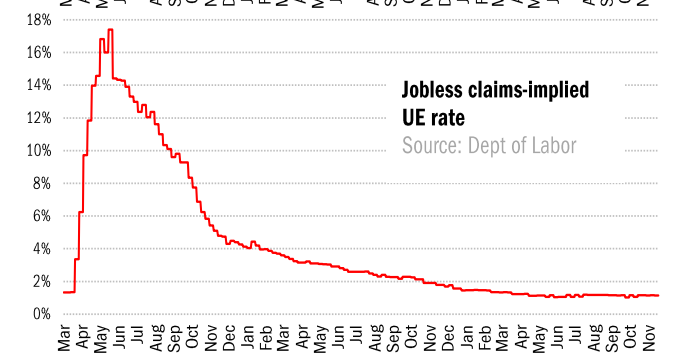
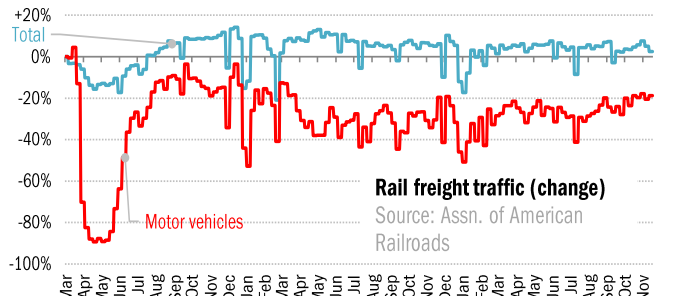
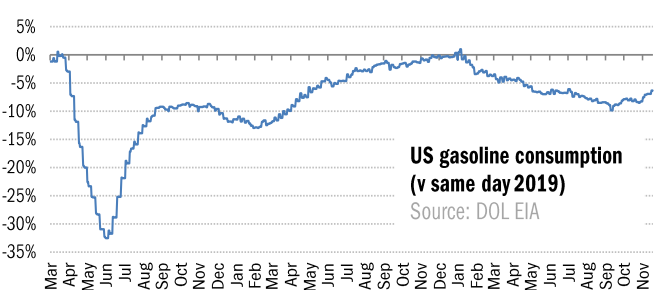
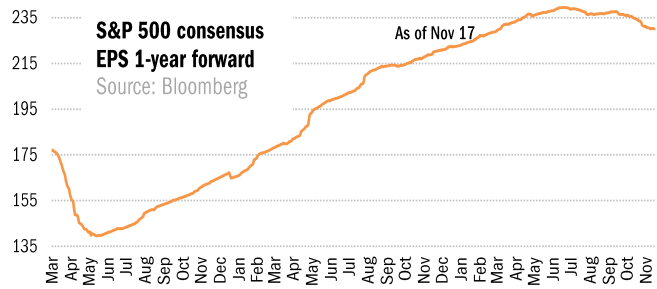
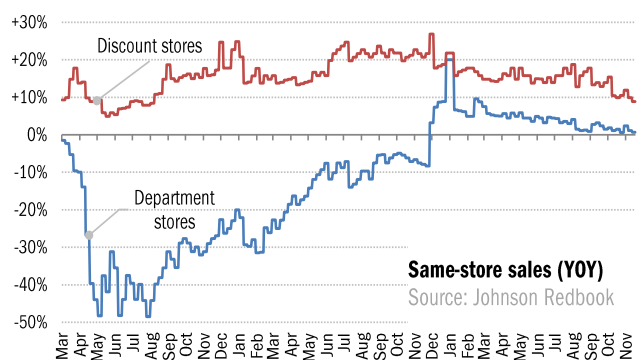
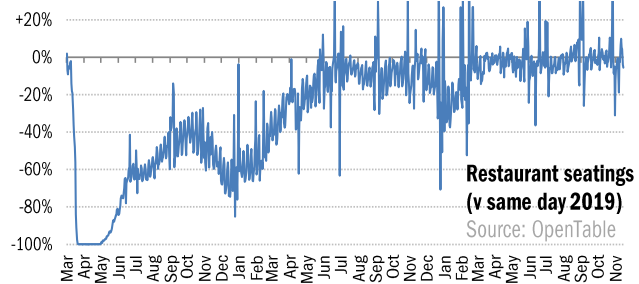
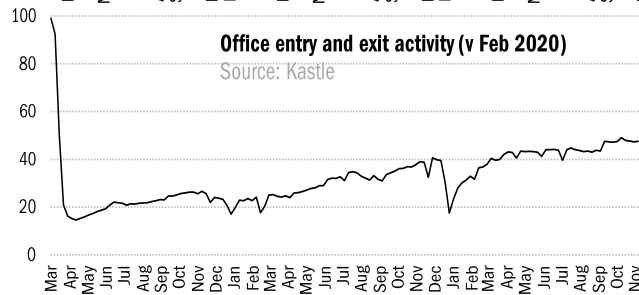
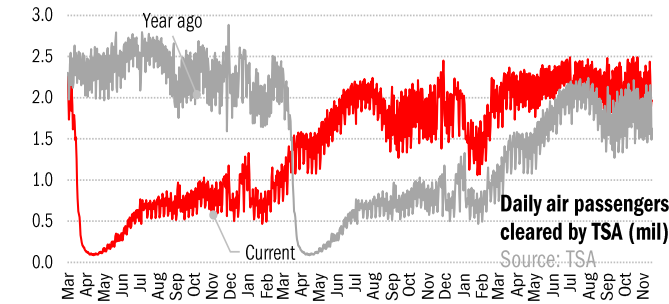


## Data Insights: High-Frequency Post-Virus US Recovery Monitor

Thursday, November 17, 2022

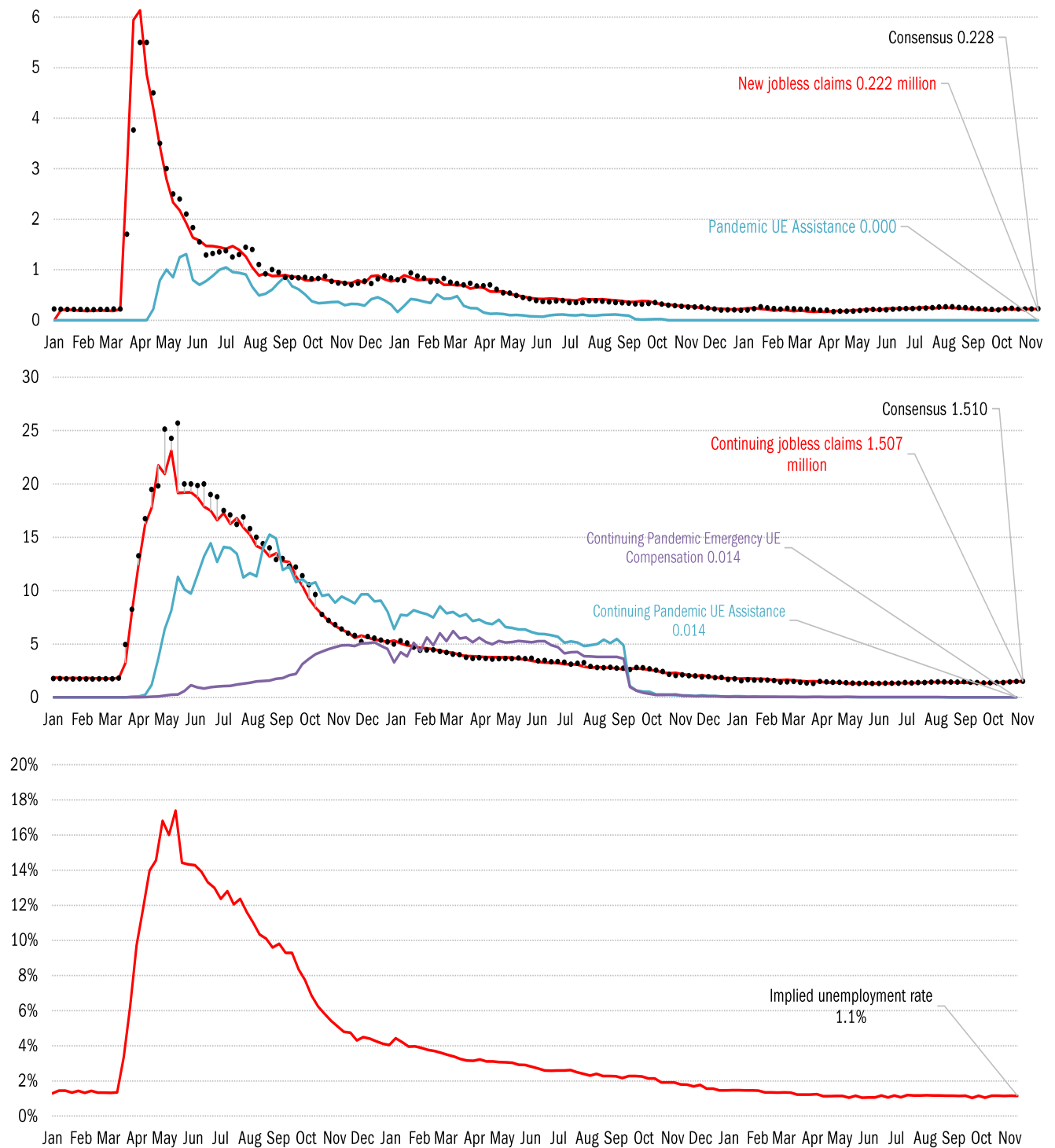
### The US high-frequency macro data dashboard

(state level and other detail in subsequent charts)



Source: As indicated, TrendMacro calculations

# High-frequency view of the US labor market: weekly unemployment claims (millions)

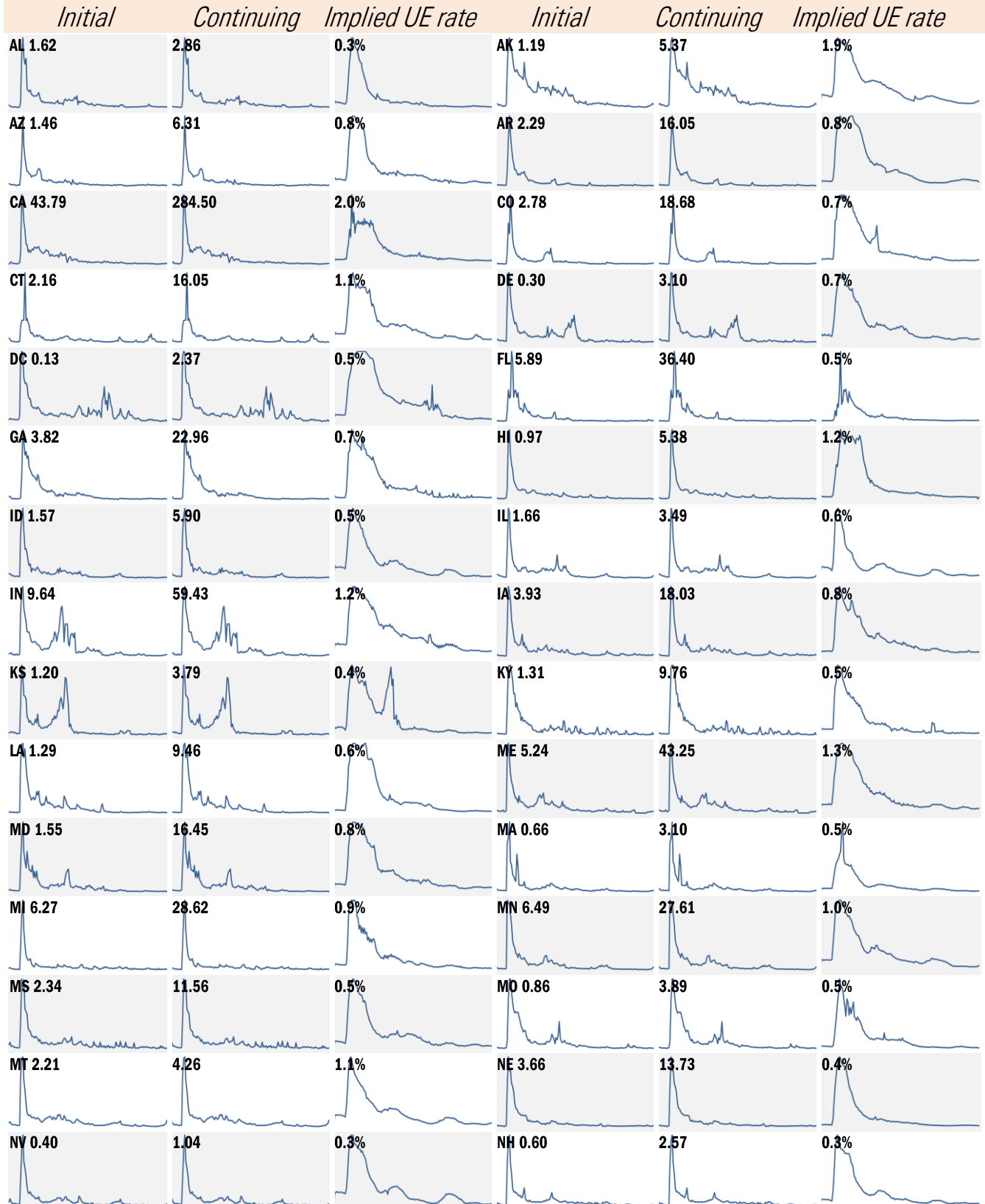


Source: Department of Labor, Bloomberg, TrendMacro calculations

**For more information contact us:**

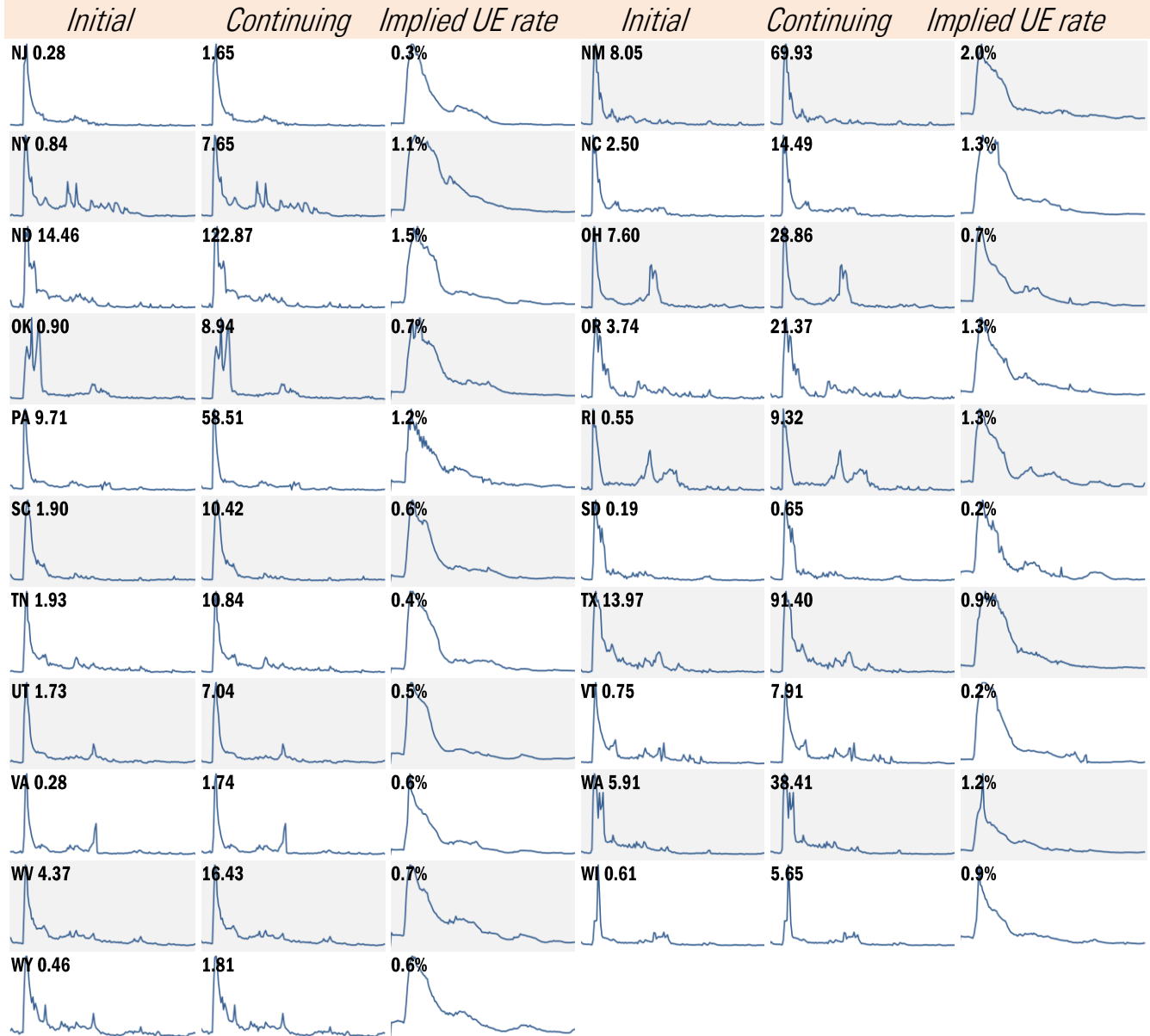
Donald Luskin: 312 273 6766 [don@trendmacro.com](mailto:don@trendmacro.com)  
 Thomas Demas: 704 552 3625 [tdemas@trendmacro.com](mailto:tdemas@trendmacro.com)

# State by state unemployment insurance claims (thousands) January 2020 to present



Source: Department of Labor, TrendMacro calculations

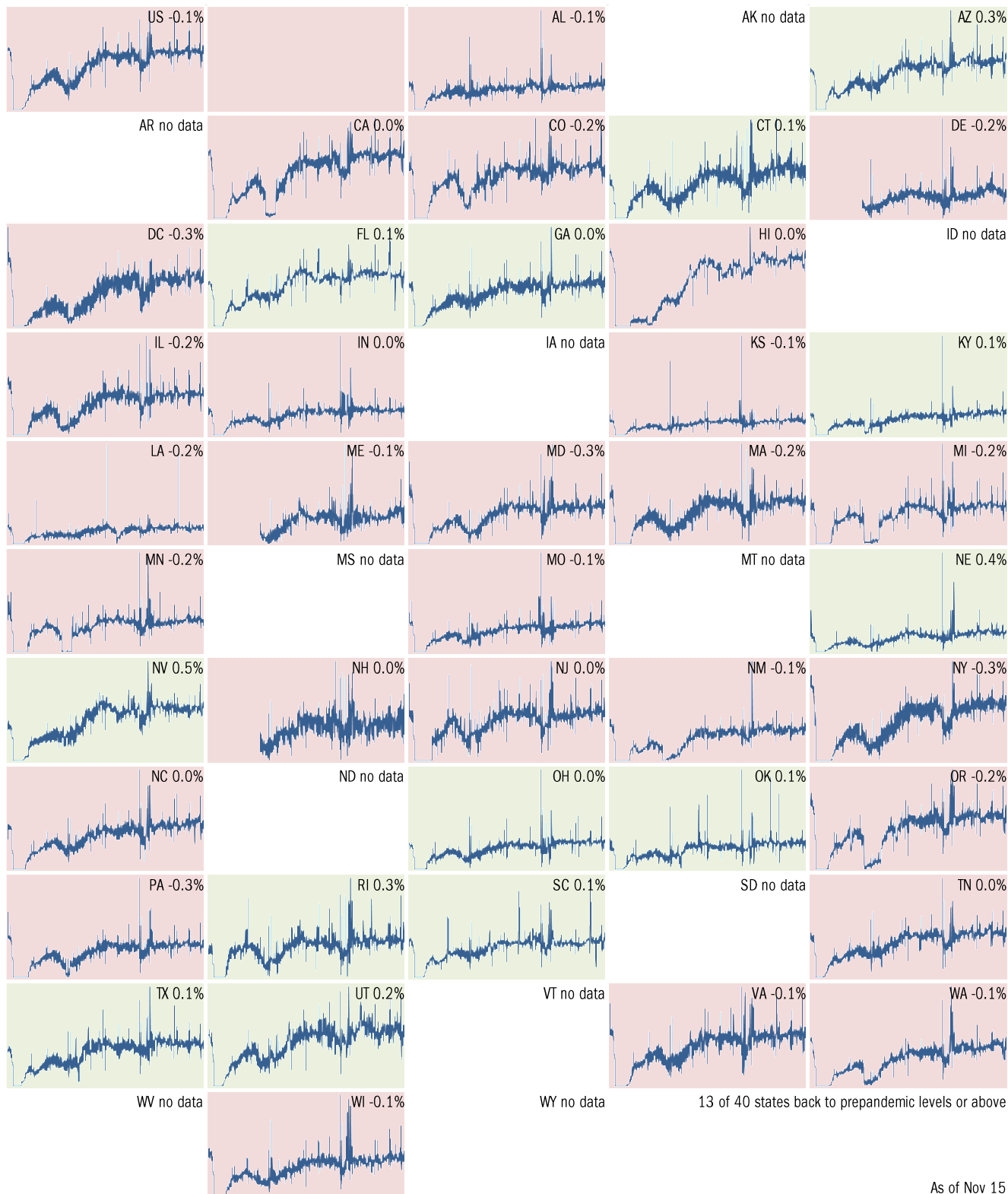
# State by state unemployment insurance claims (thousands) January 2020 to present



Source: Department of Labor, TrendMacro calculations

# Make America eat again:

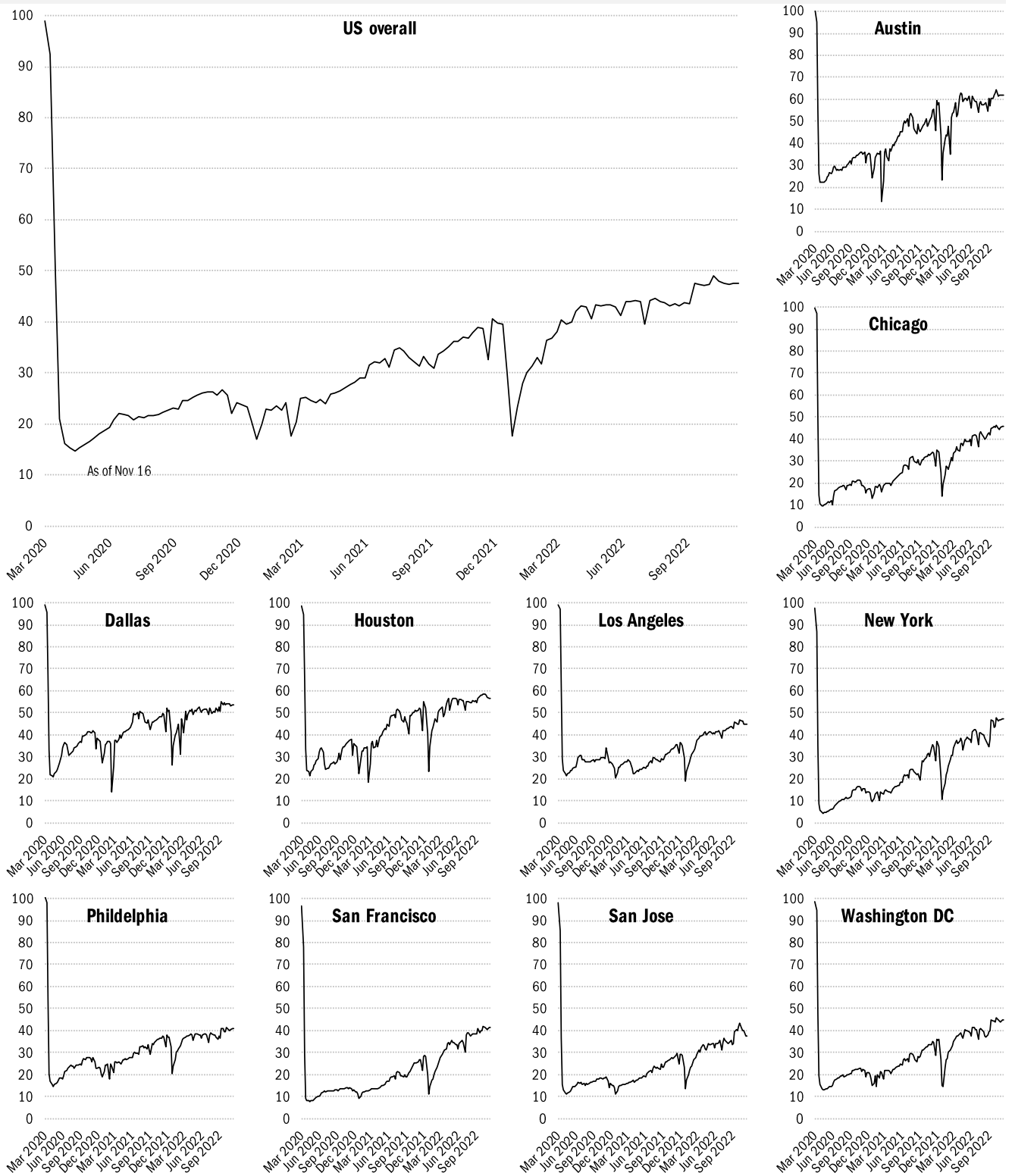
Seated diners in restaurants versus 2019... Feb 2020 to present ■ Better ■ Worse



Source: [Open Table](#), TrendMacro calculations

# Returning to the American office

Indices of office capacity utilization based on weekly door-security access data



Source: [Kastle Systems](#), TrendMacro calculations