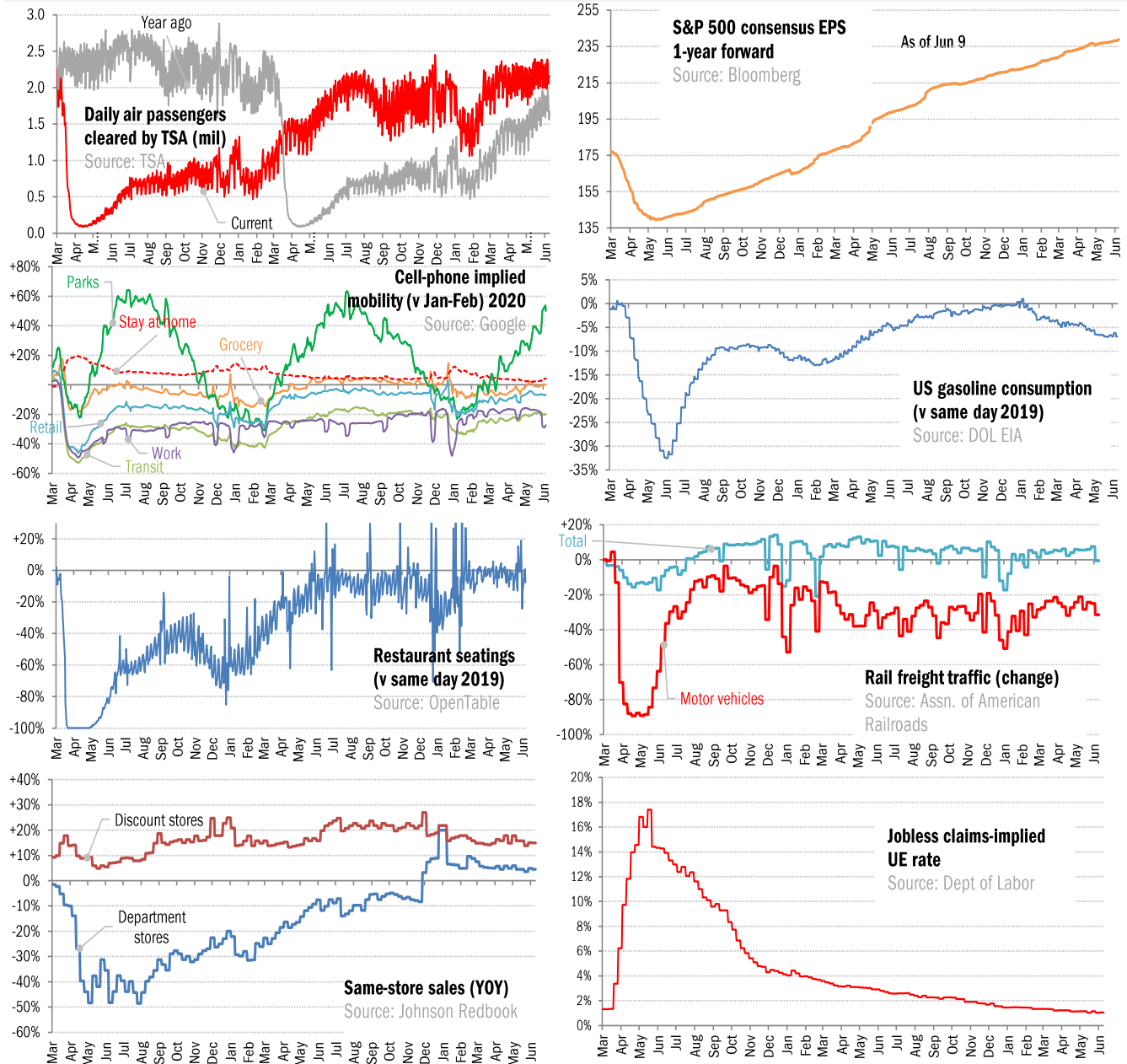


## Data Insights: High-Frequency Post-Virus US Recovery Monitor

Thursday, June 9, 2022

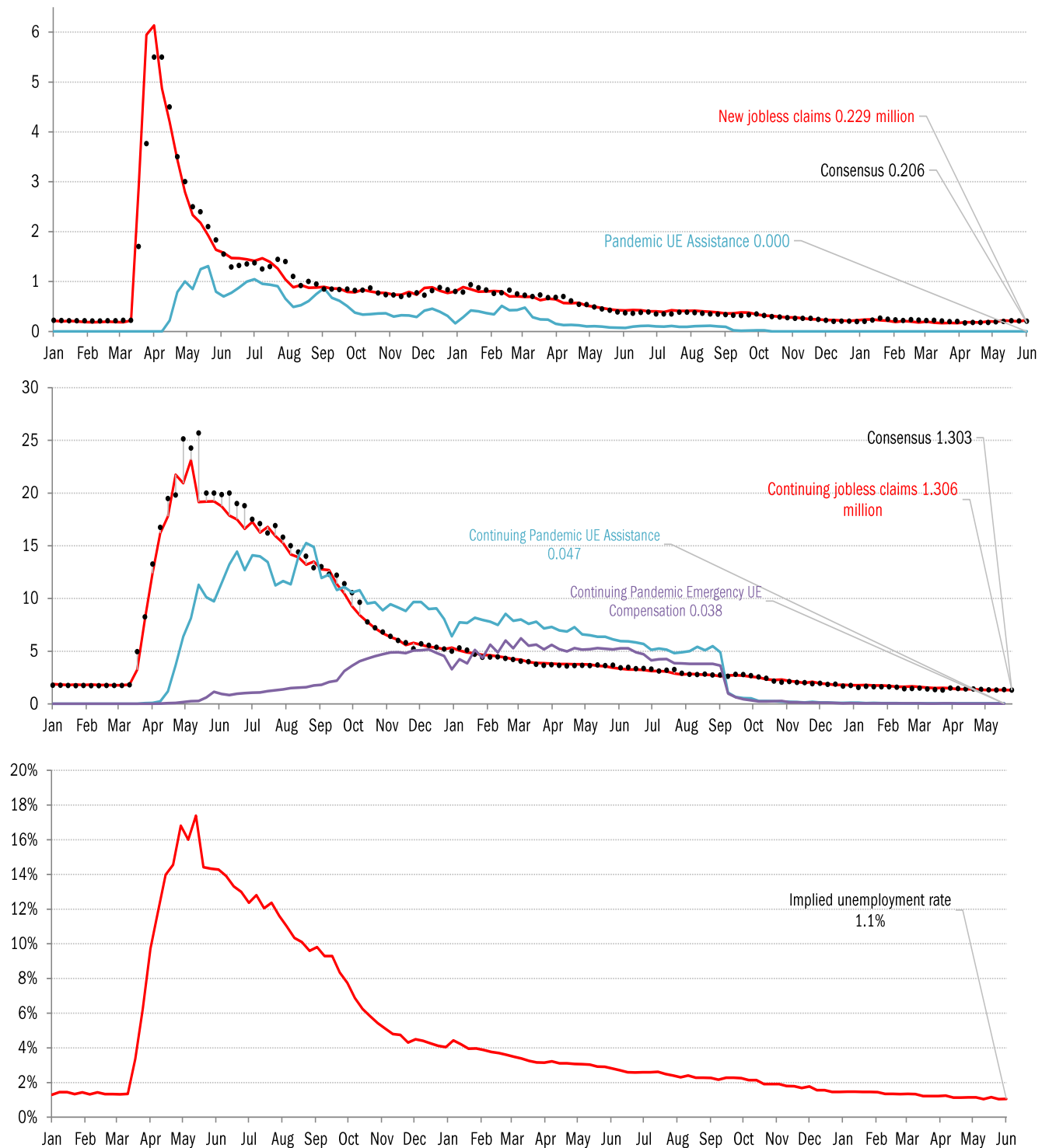
### The US high-frequency macro data dashboard

(state level and other detail in subsequent charts)



Source: As indicated, TrendMacro calculations

## High-frequency view of the US labor market: weekly unemployment claims (millions)

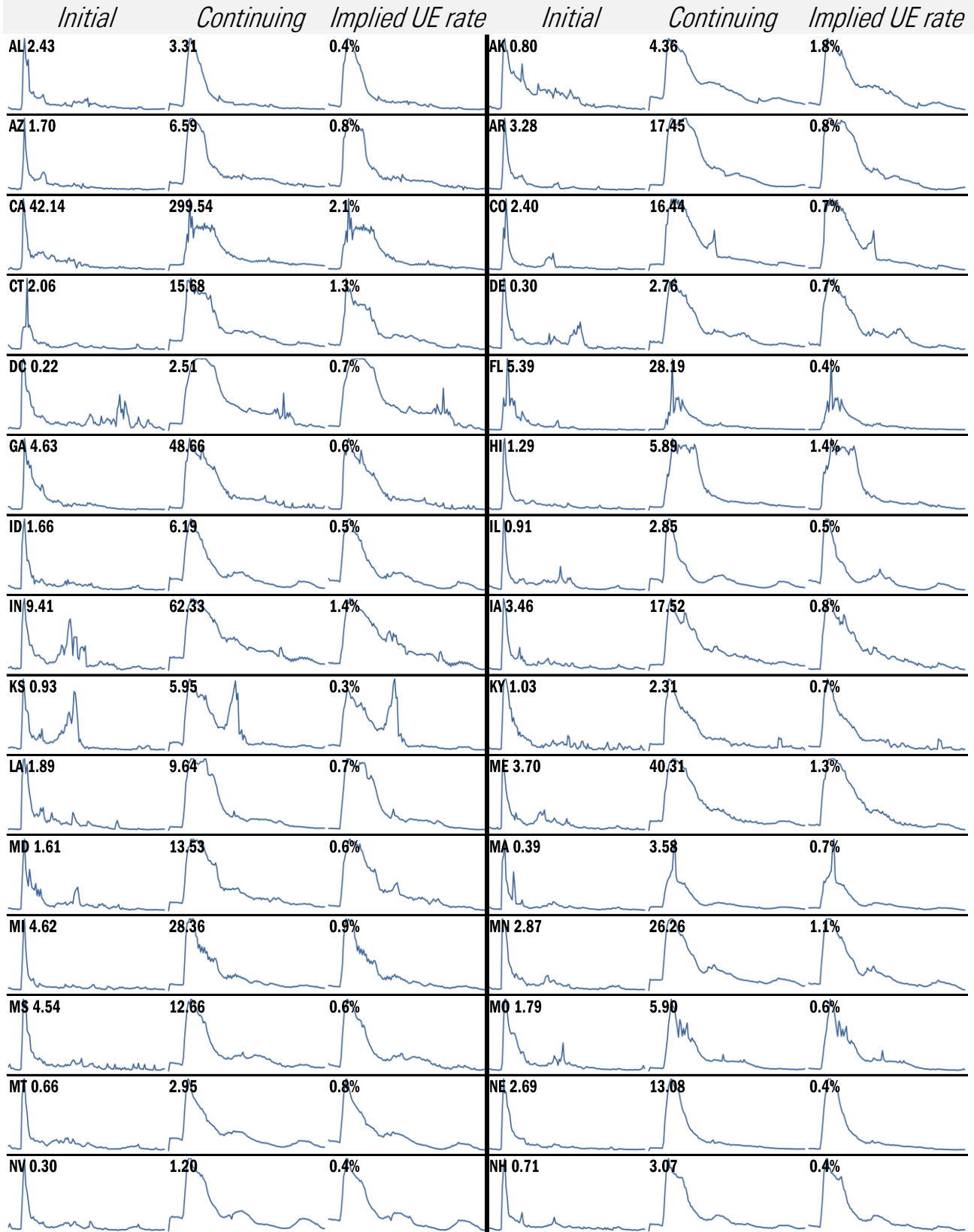


Source: Department of Labor, Bloomberg, TrendMacro calculations

### For more information contact us:

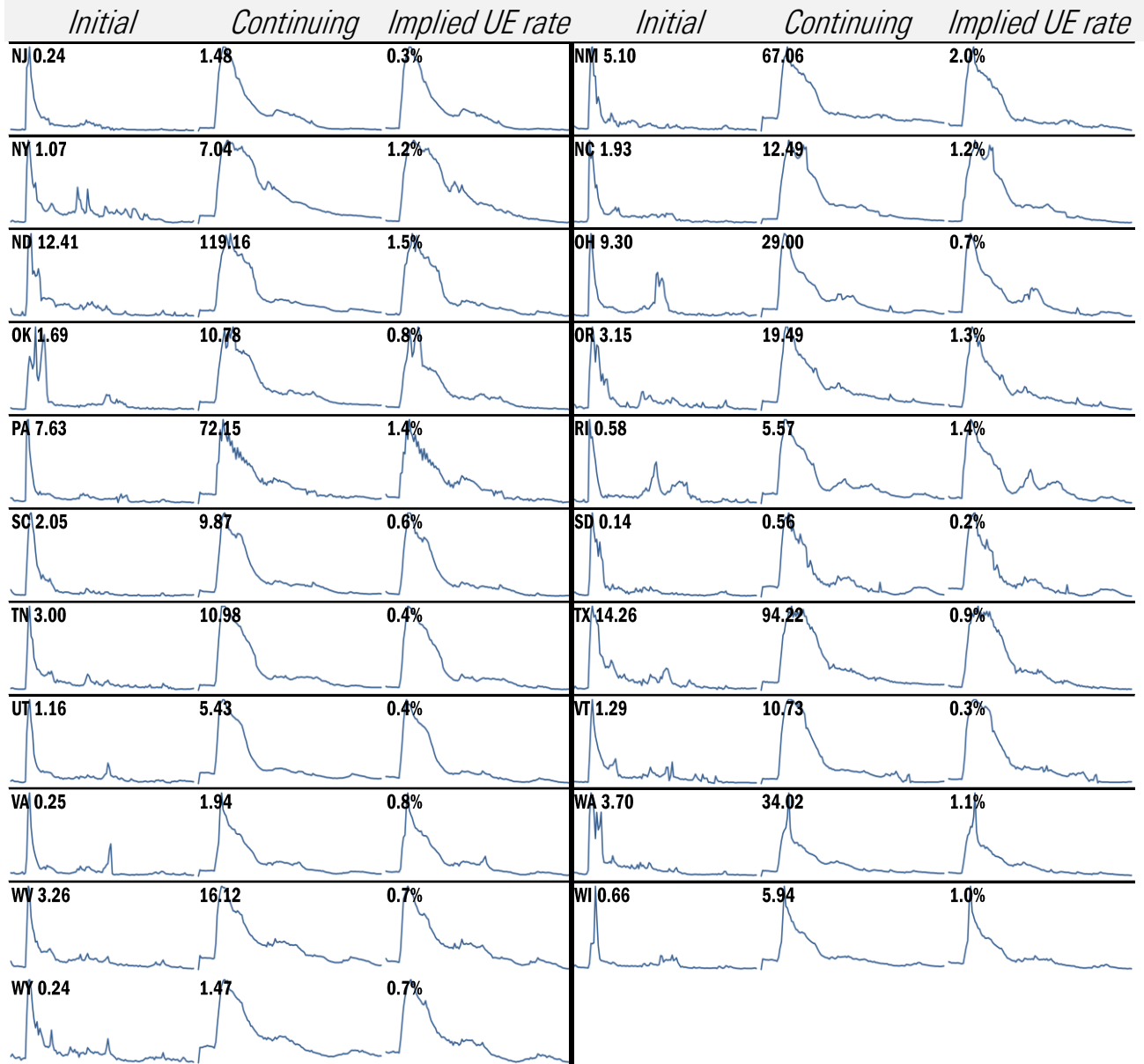
Donald Luskin: 312 273 6766 [don@trendmacro.com](mailto:don@trendmacro.com)  
 Thomas Demas: 704 552 3625 [tdemas@trendmacro.com](mailto:tdemas@trendmacro.com)

# State by state unemployment insurance claims (thousands)



Source: Department of Labor, TrendMacro calculations

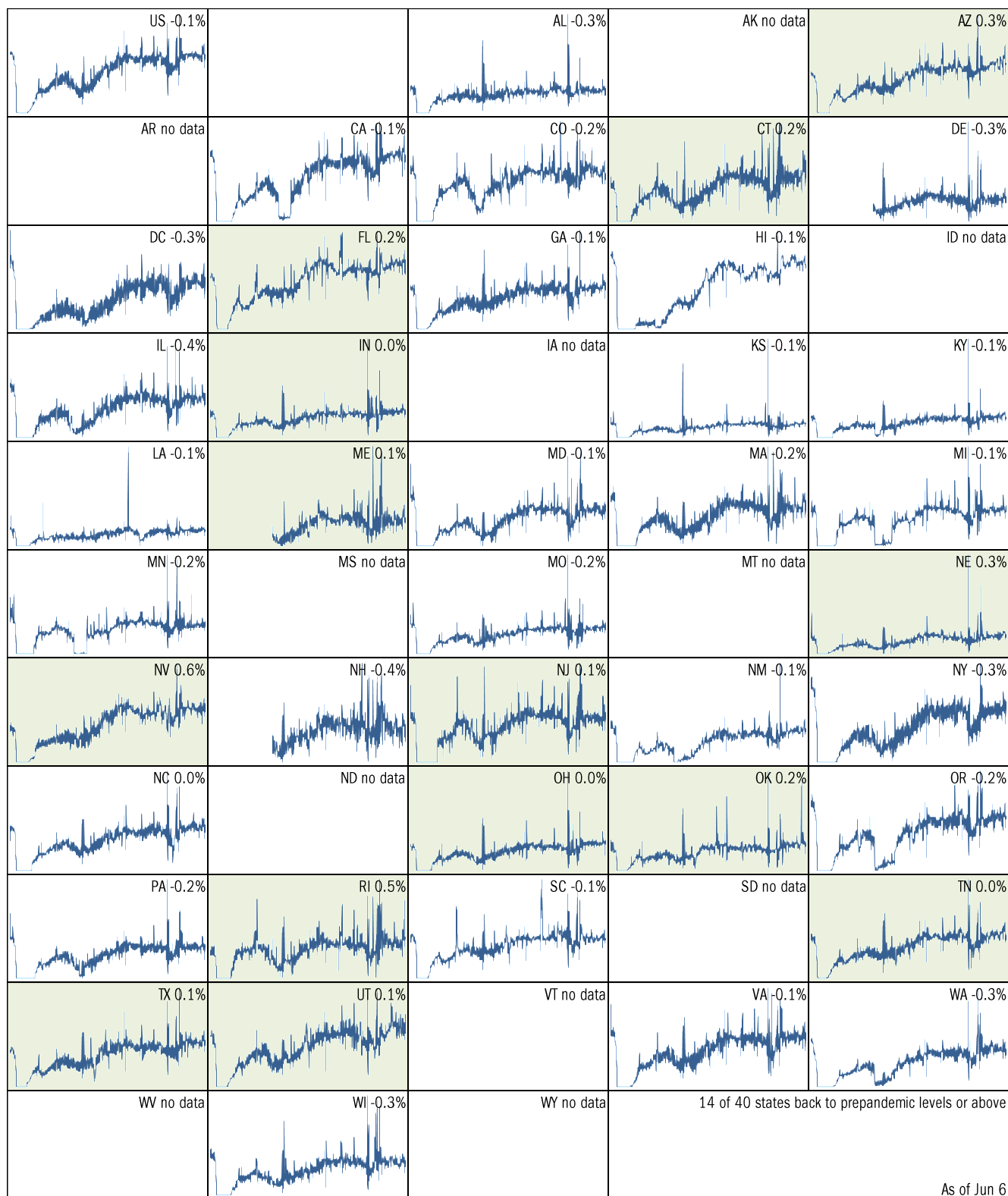
## State by state unemployment insurance claims (thousands)



Source: Department of Labor, TrendMacro calculations

# Make America eat again:

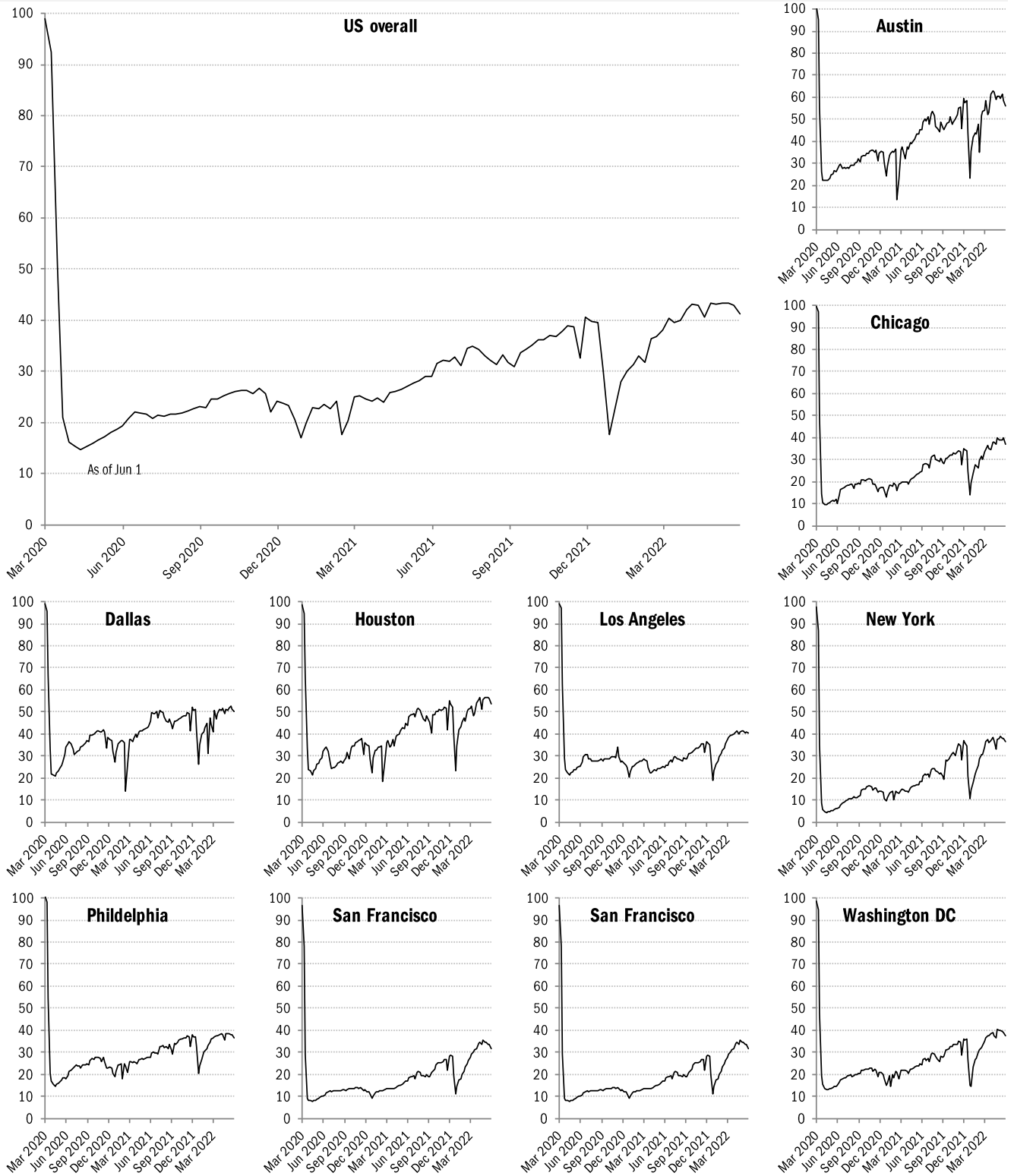
Seated diners in restaurants compared to 2019... Feb 2020 to present ■ Positive



Source: [Open Table](#), TrendMacro calculations

# Returning to the American office

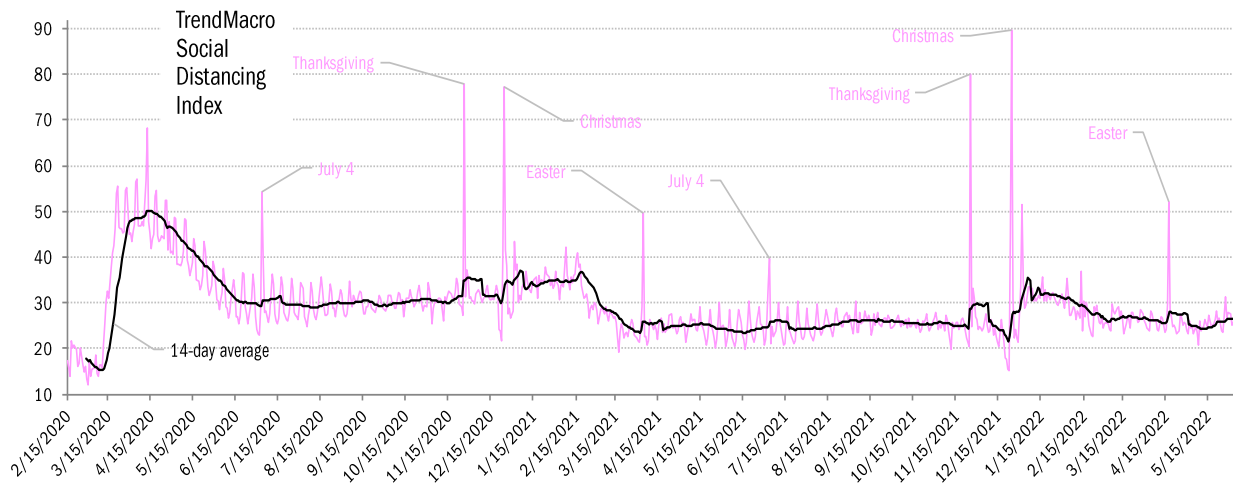
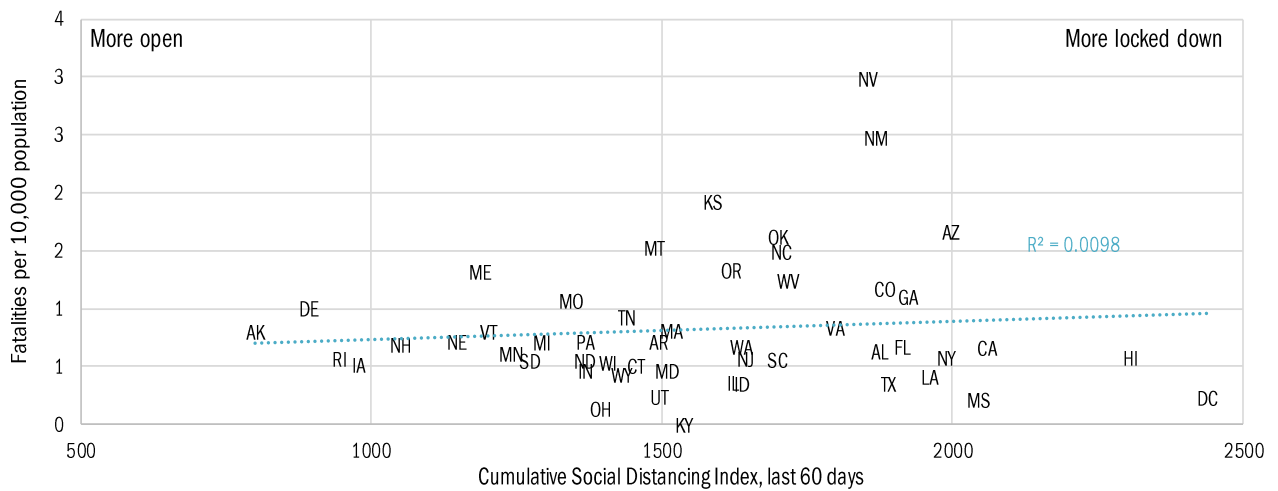
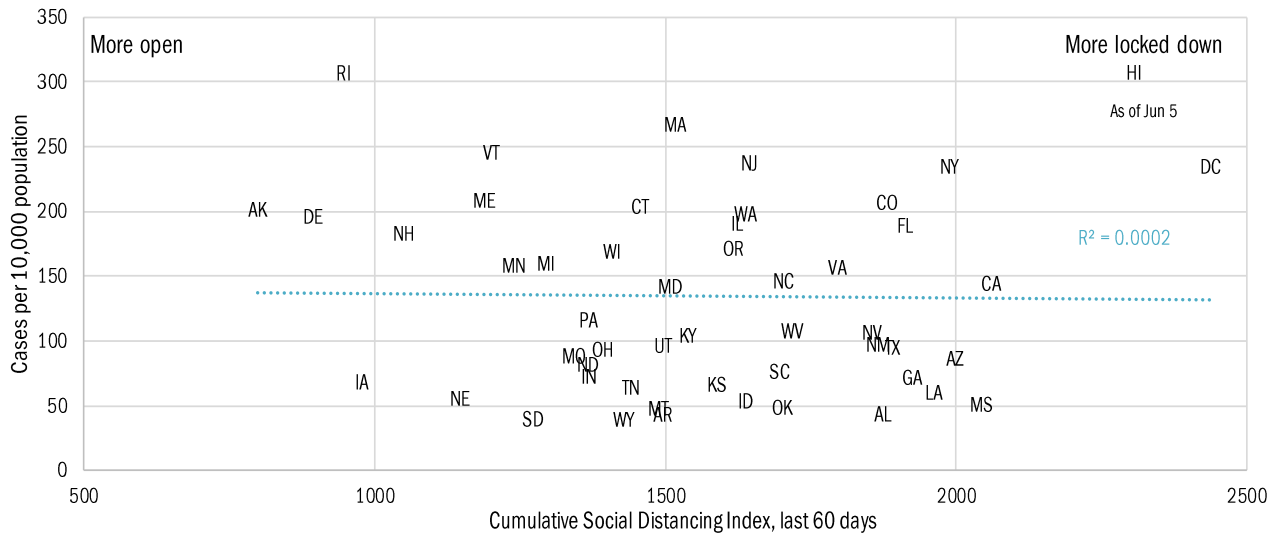
Indices of office capacity utilization based on weekly door-security access data



Source: [Kastle Systems](#), TrendMacro calculations

# Re-opening the economy amidst ongoing pandemic risk

## Covid-19 fatalities and cases *vs* social distancing measured by cell-phone mobility data



Source: [Google](#), after [University of Maryland Impact Analysis Platform](#), [Johns Hopkins](#), TrendMacro calcs

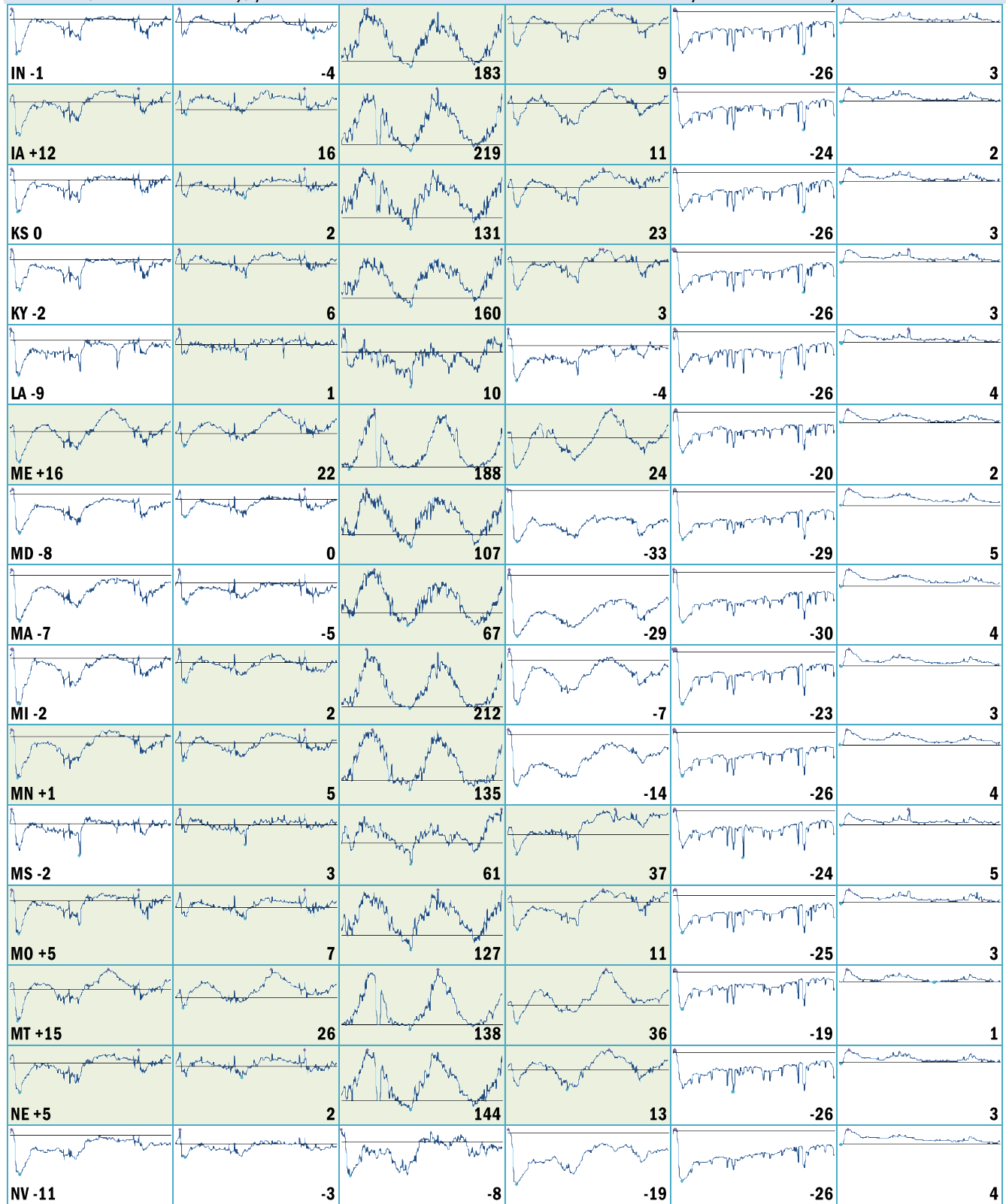
Make America move again: Mobility vs Jan 3–Feb 6 2020 baseline ■ Positive

	<i>Retail/rec</i>	<i>Grocery/pharm</i>	<i>Parks</i>	<i>Transit stations</i>	<i>Workplaces</i>	<i>Stay at home</i>
<b>US -7</b>		0	50	-20	-27	4
<b>AL -6</b>		8	59	10	-23	5
<b>AK +26</b>		25	299	49	-22	1
<b>AZ -16</b>		-10	-24	-20	-31	6
<b>AR +3</b>		6	145	28	-22	4
<b>CA -17</b>		-8	-2	-36	-32	6
<b>CO -9</b>		-1	50	-16	-33	4
<b>CT -3</b>		0	101	-10	-24	3
<b>DE +5</b>		8	54	-28	-23	4
<b>DC -32</b>		-19	0	-50	-38	6
<b>FL -15</b>		-6	-14	-24	-28	6
<b>GA -10</b>		2	54	-6	-30	5
<b>HI -20</b>		-11	-14	-24	-36	8
<b>ID +5</b>		12	141	25	-23	2
<b>IL -5</b>		2	102	-17	-30	4

Source: [Google Mobility Reports](https://www.google.com/covid19/mobility/), TrendMacro calculations



Make America move again: Mobility vs Jan 3–Feb 6 2020 baseline ■ Positive



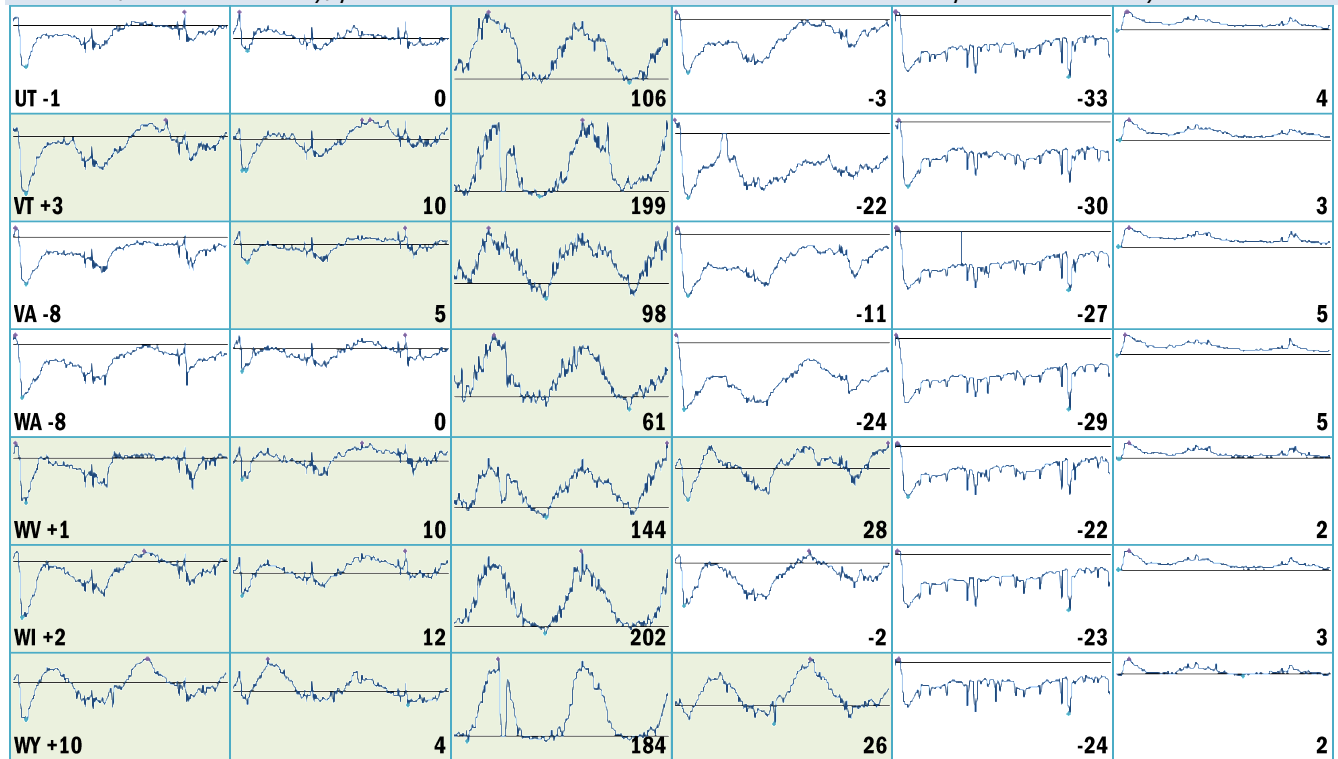
Source: [Google Mobility Reports](#), TrendMacro calculations

Make America move again: Mobility vs Jan 3–Feb 6 2020 baseline ■ Positive

	<i>Retail/rec</i>	<i>Grocery/pharm</i>	<i>Parks</i>	<i>Transit stations</i>	<i>Workplaces</i>	<i>Stay at home</i>
NH +4		11	163	-22	-24	4
NJ -6		4	113	-21	-28	4
NM -8		-5	35	-1	-29	4
NY -14		-5	64	-29	-29	4
NC -5		6	81	-11	-25	4
ND +2		1	139	10	-24	2
OH -2		0	170	-2	-27	3
OK -1		4	72	20	-23	4
OR -6		2	67	-18	-26	4
PA -5		3	122	-22	-25	4
RI -3		-2	236	-35	-26	3
SC +3		10	71	20	-22	4
SD +17		25	238	47	-22	3
TN -1		8	109	1	-25	4
TX -9		-2	9	-8	-30	6

Source: [Google Mobility Reports](#), TrendMacro calculations

Make America move again: Mobility vs Jan 3–Feb 6 2020 baseline ■ Positive



Source: [Google Mobility Reports](https://www.google.com/covid19/mobility/), TrendMacro calculations