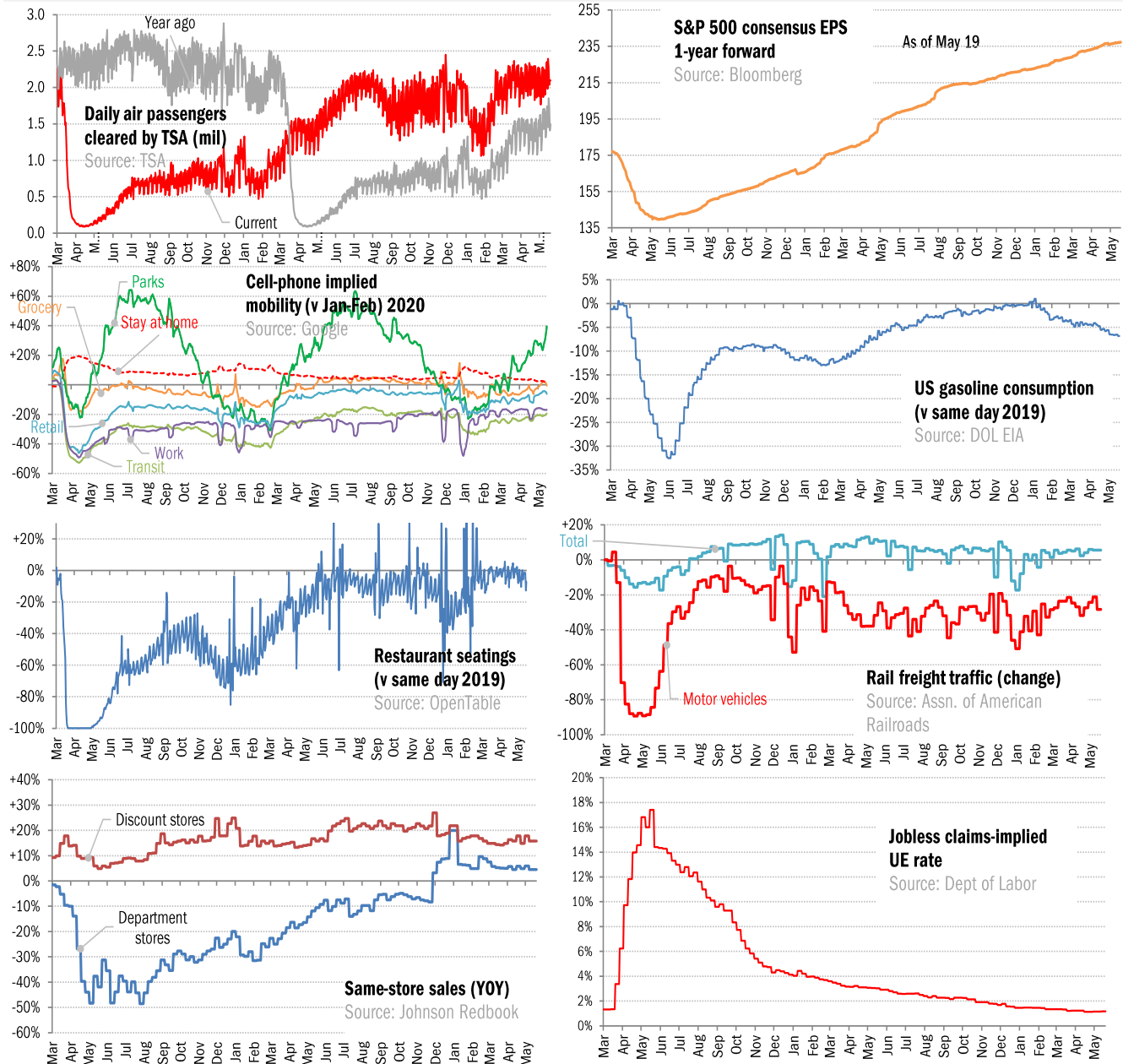


Data Insights: High-Frequency Post-Virus US Recovery Monitor

Thursday, May 19, 2022

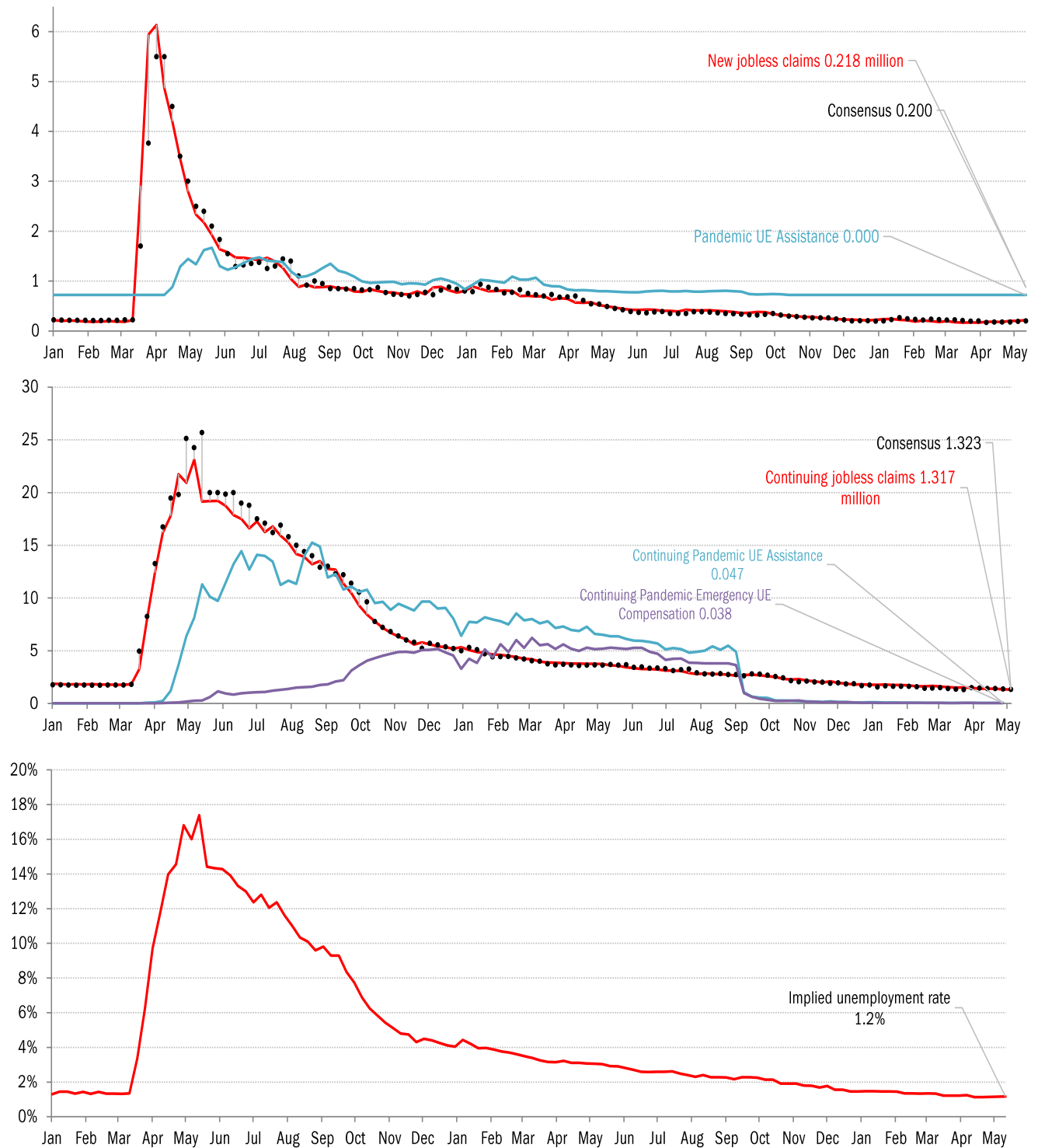
The US high-frequency macro data dashboard

(state level and other detail in subsequent charts)



Source: As indicated, TrendMacro calculations

High-frequency view of the US labor market: weekly unemployment claims (millions)

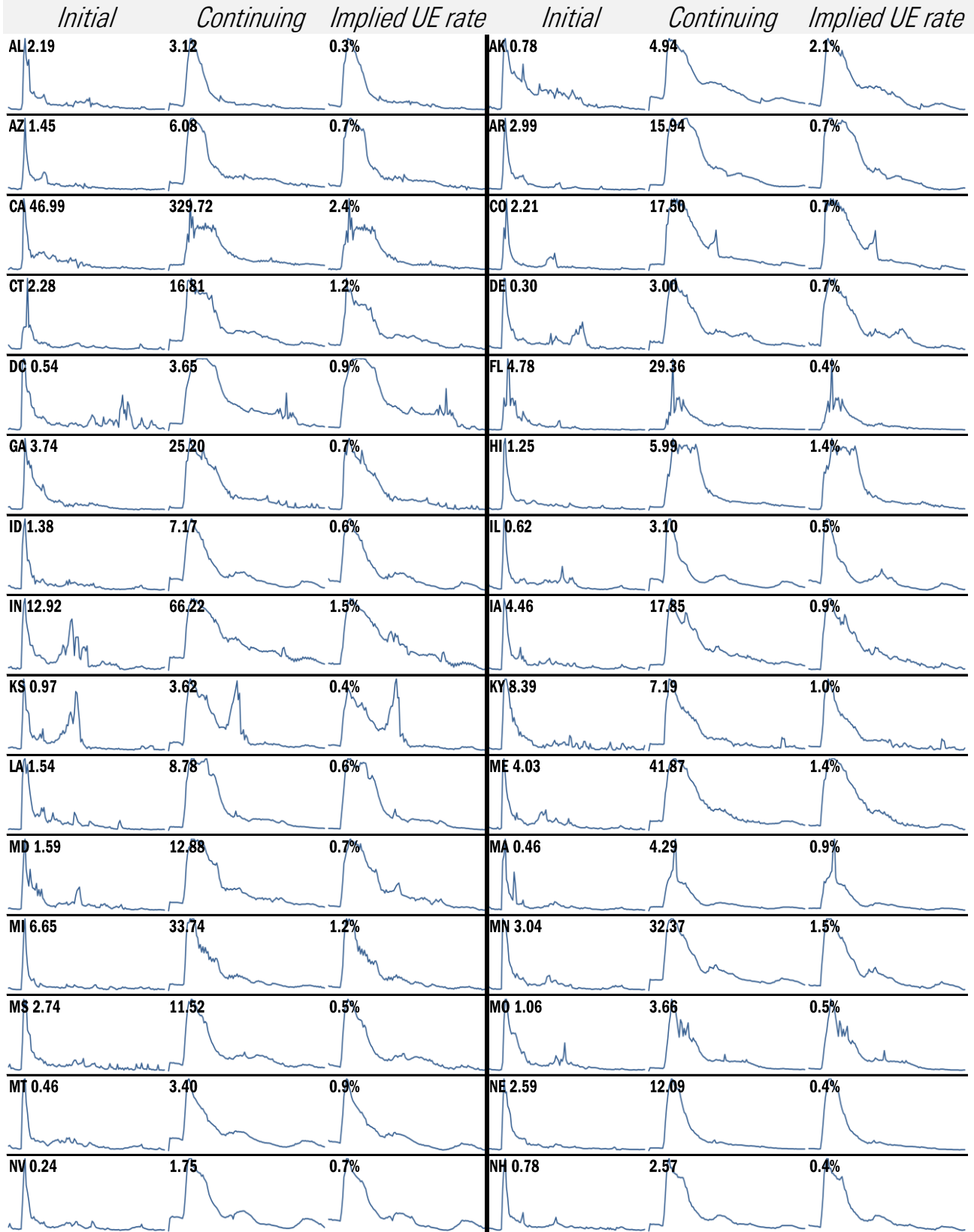


Source: Department of Labor, Bloomberg, TrendMacro calculations

For more information contact us:

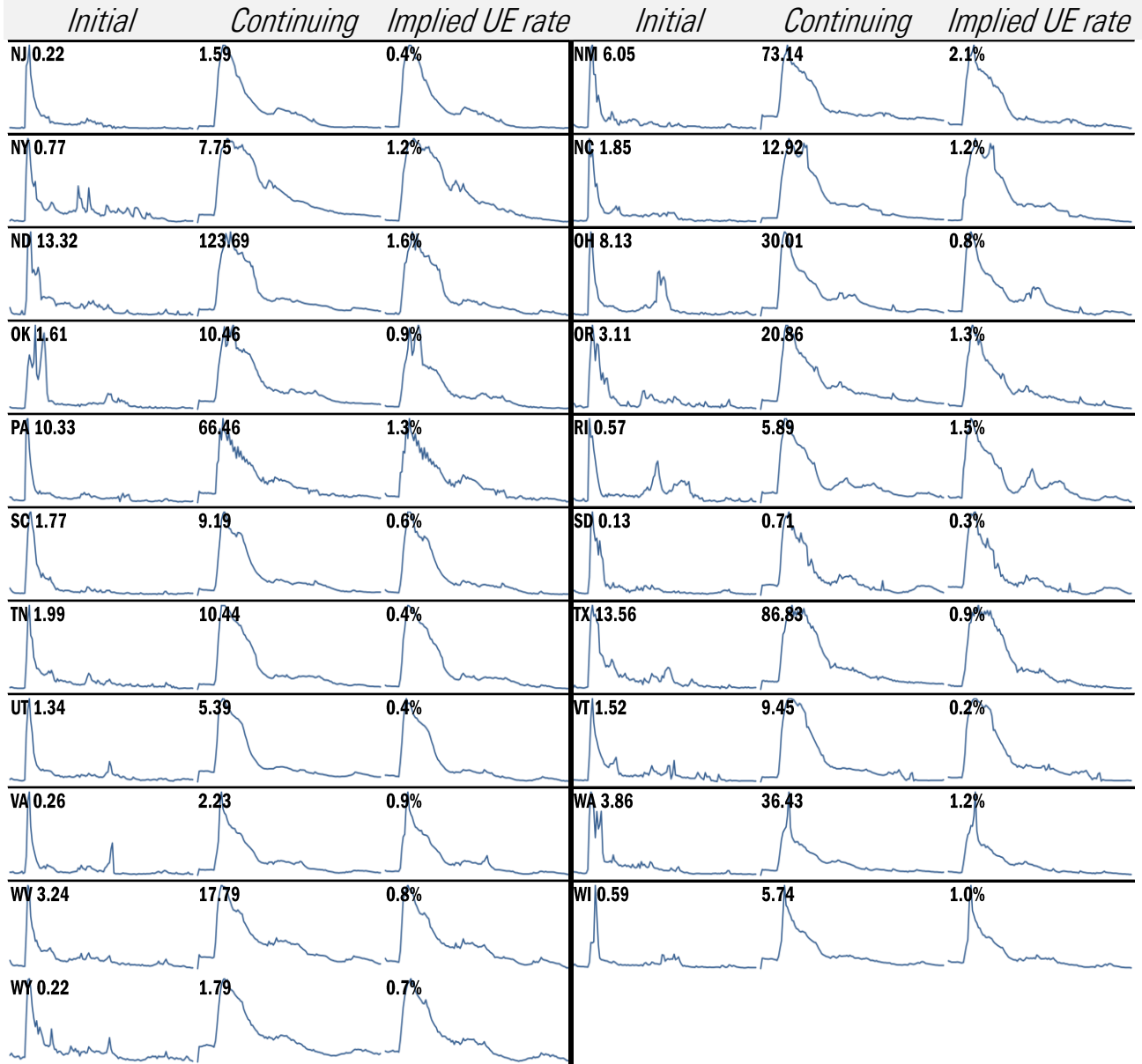
Donald Luskin: 312 273 6766 don@trendmacro.com
 Thomas Demas: 704 552 3625 tdemas@trendmacro.com

State by state unemployment insurance claims (thousands)



Source: Department of Labor, TrendMacro calculations

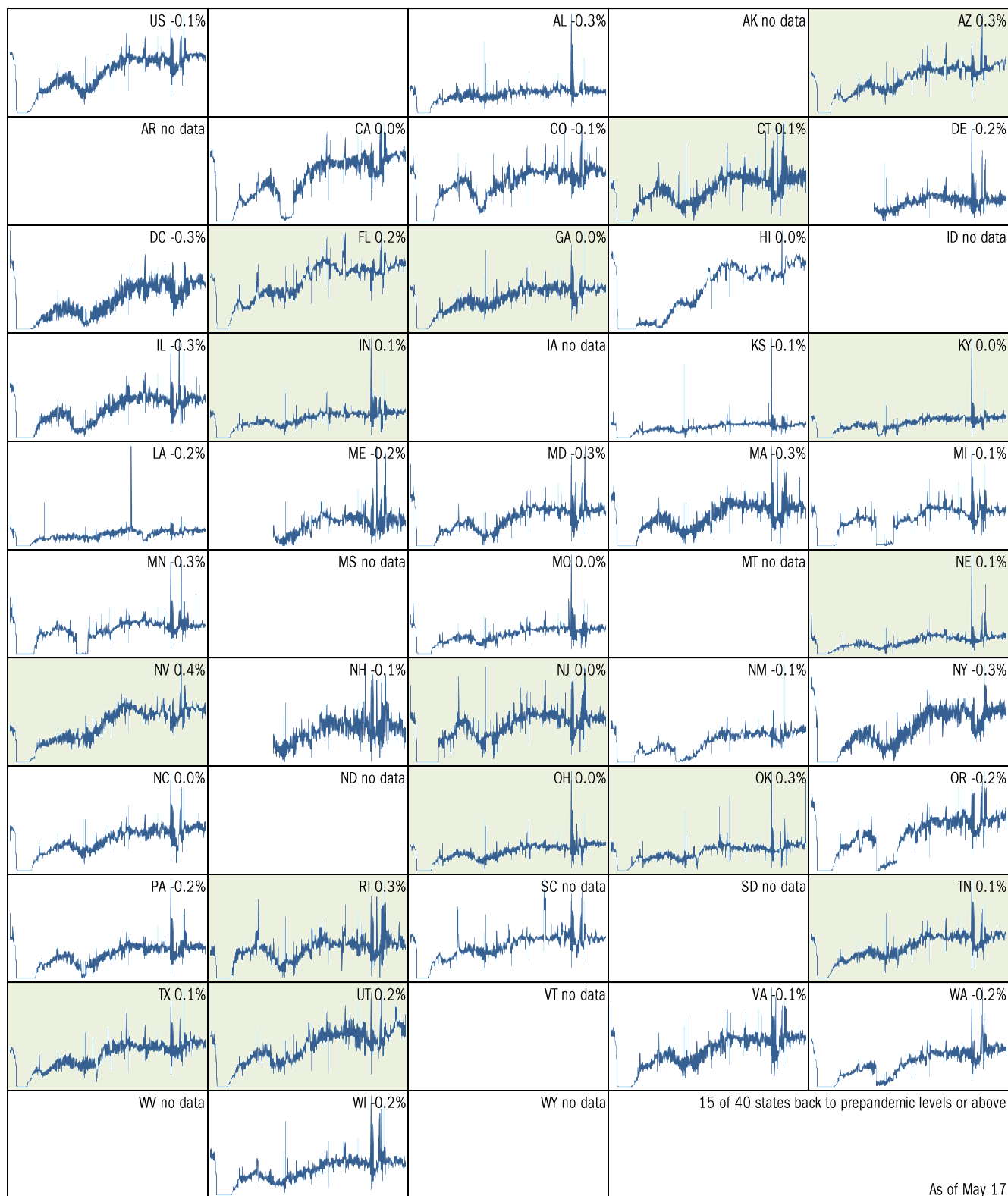
State by state unemployment insurance claims (thousands)



Source: Department of Labor, TrendMacro calculations

Make America eat again:

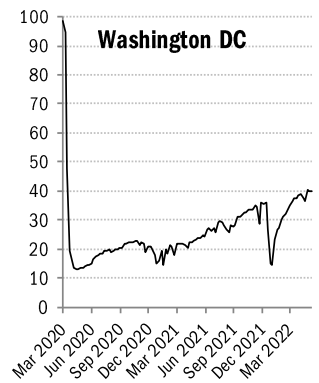
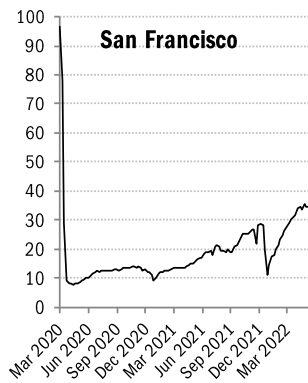
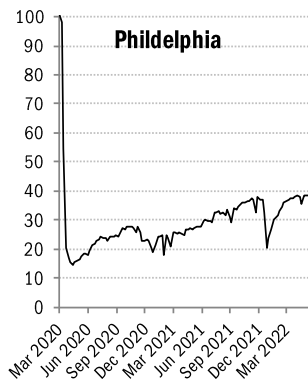
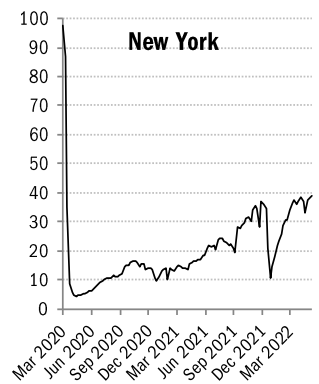
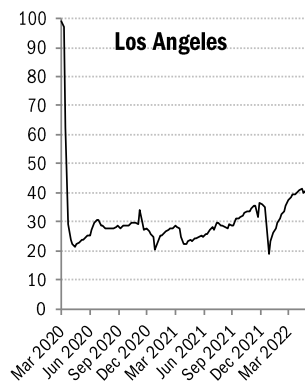
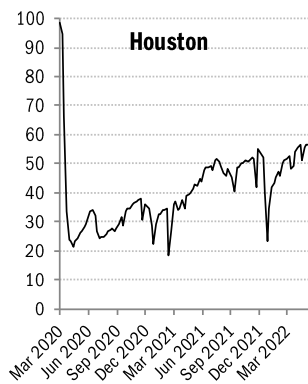
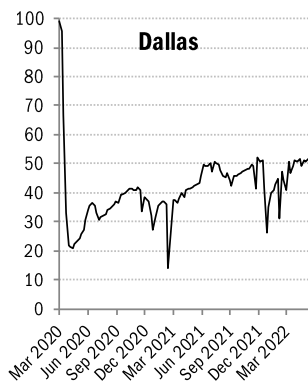
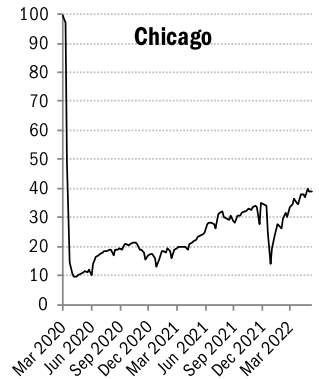
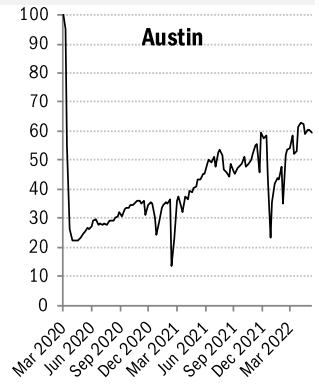
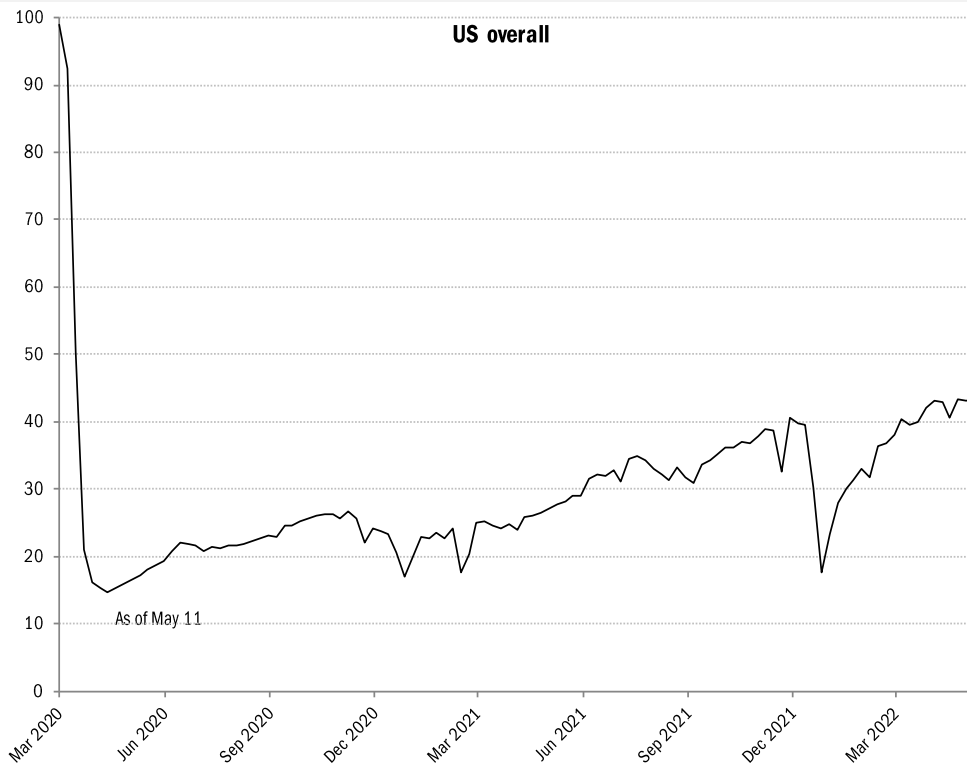
Seated diners in restaurants compared to 2019... Feb 2020 to present ■ Positive



Source: [Open Table](#), TrendMacro calculations

Returning to the American office

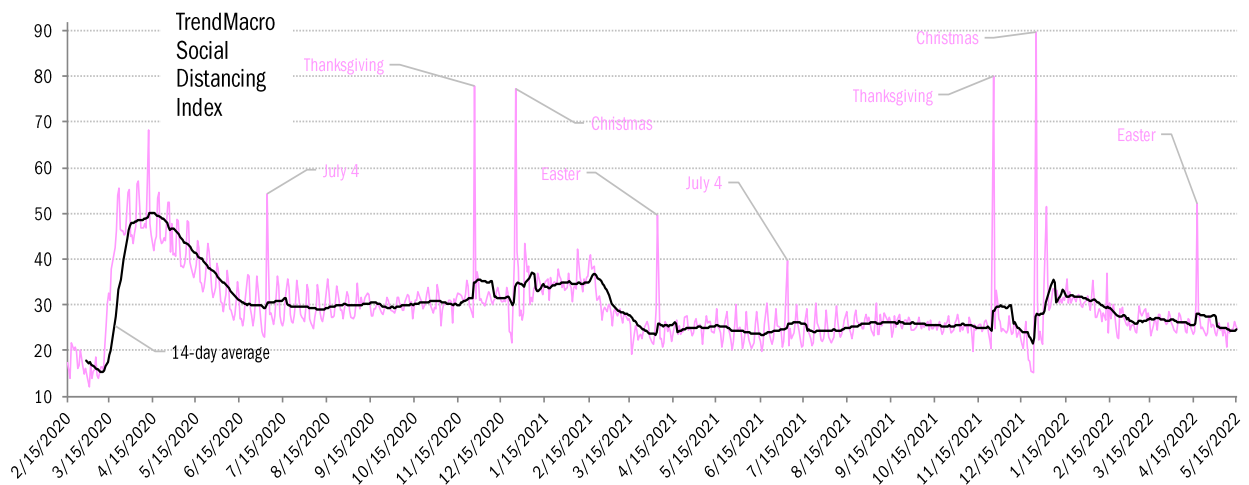
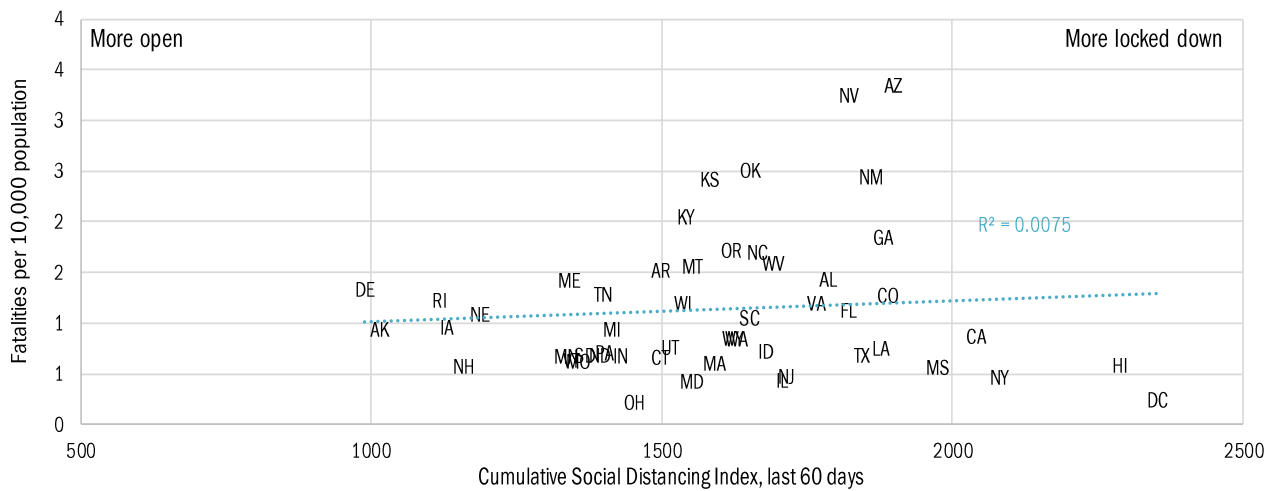
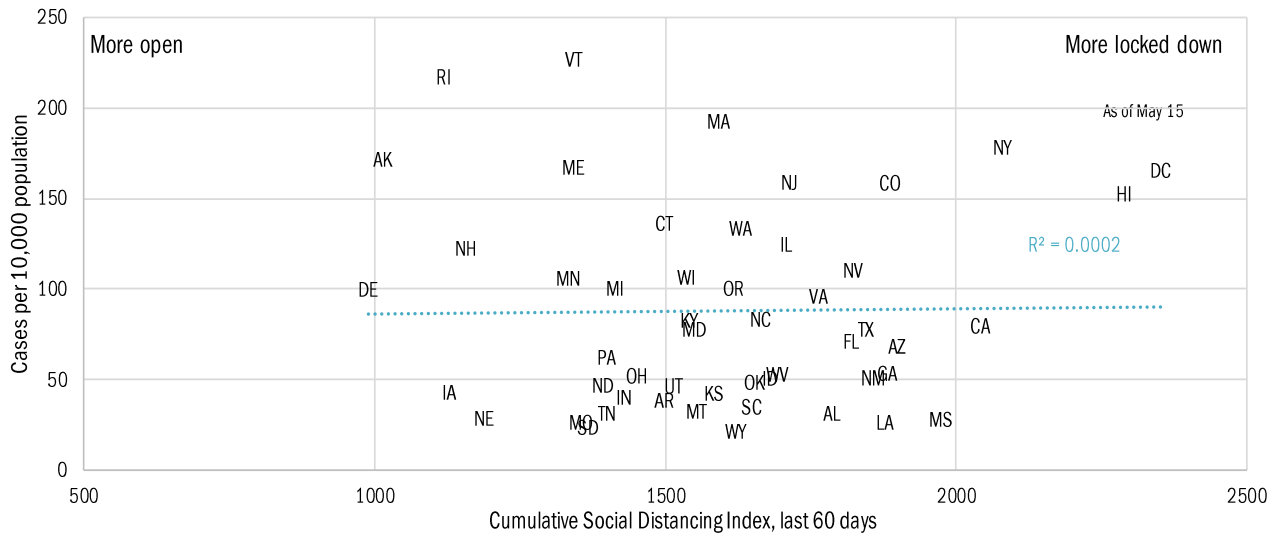
Indices of office attendance based on weekly door-security access data



Source: [Kastle Systems](#), TrendMacro calculations

Re-opening the economy amidst ongoing pandemic risk

Covid-19 fatalities and cases *vs* social distancing measured by cell-phone mobility data



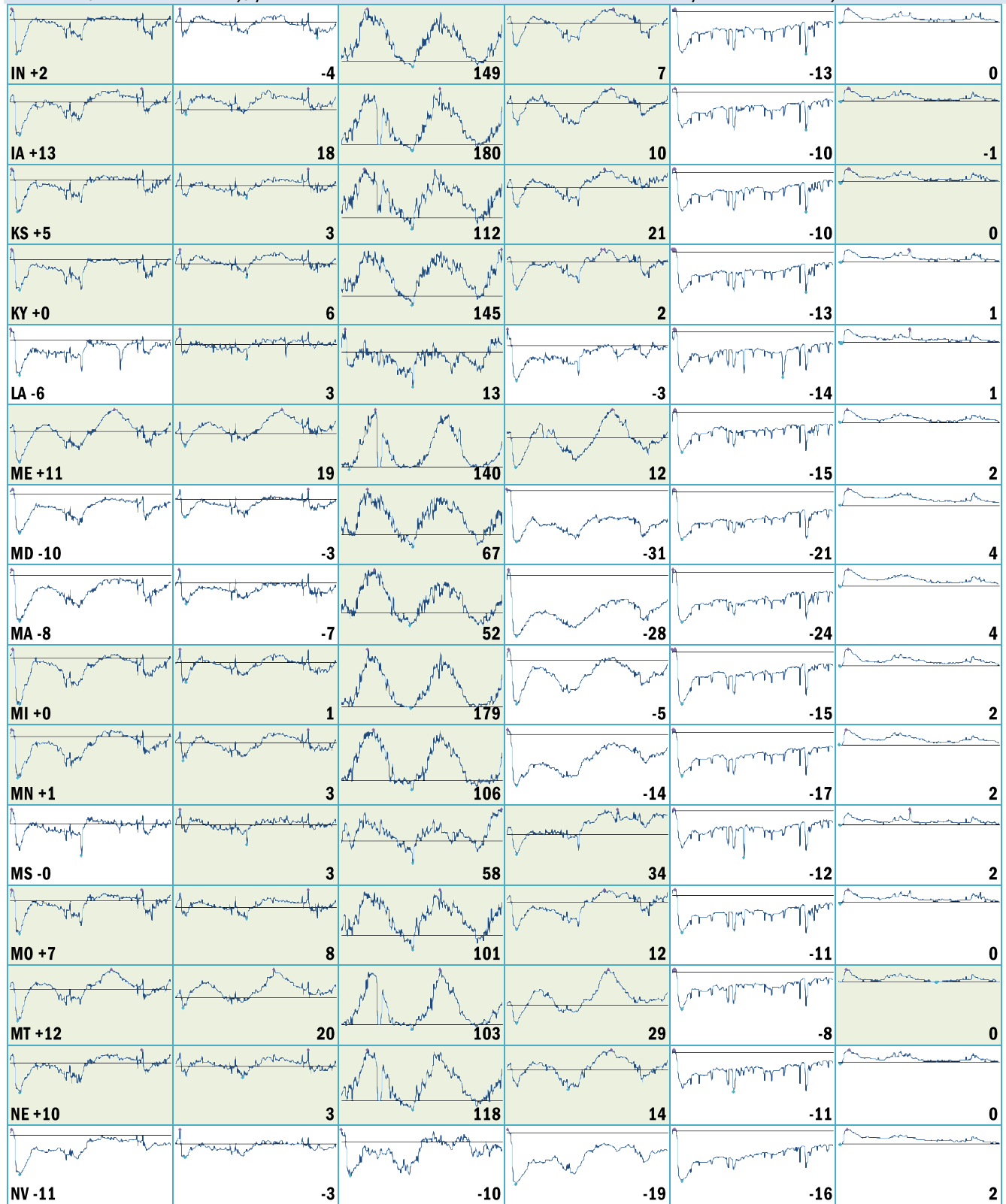
Source: [Google](#), after [University of Maryland Impact Analysis Platform](#), [Johns Hopkins](#), TrendMacro calcs

Make America move again: Mobility vs Jan 3–Feb 6 2020 baseline ■ Positive

	<i>Retail/rec</i>	<i>Grocery/pharm</i>	<i>Parks</i>	<i>Transit stations</i>	<i>Workplaces</i>	<i>Stay at home</i>
US -6			40	-19	-17	2
AL -3		7	60	9	-10	2
AK +18		14	162	32	-10	1
AZ -12		-8	-21	-17	-19	3
AR +5		6	127	26	-10	1
CA -17		-9	-7	-35	-24	4
CO -8		-1	41	-17	-21	2
CT -2		-2	84	-12	-17	2
DE +1		3	31	-30	-15	3
DC -27		-20	0	-47	-32	6
FL -12		-4	-6	-20	-16	3
GA -7		2	54	-6	-17	2
HI -19		-10	-15	-24	-26	5
ID +3		9	117	20	-11	0
IL -3		2	81	-17	-19	1

Source: [Google Mobility Reports](#), TrendMacro calculations

Make America move again: Mobility vs Jan 3–Feb 6 2020 baseline ■ Positive



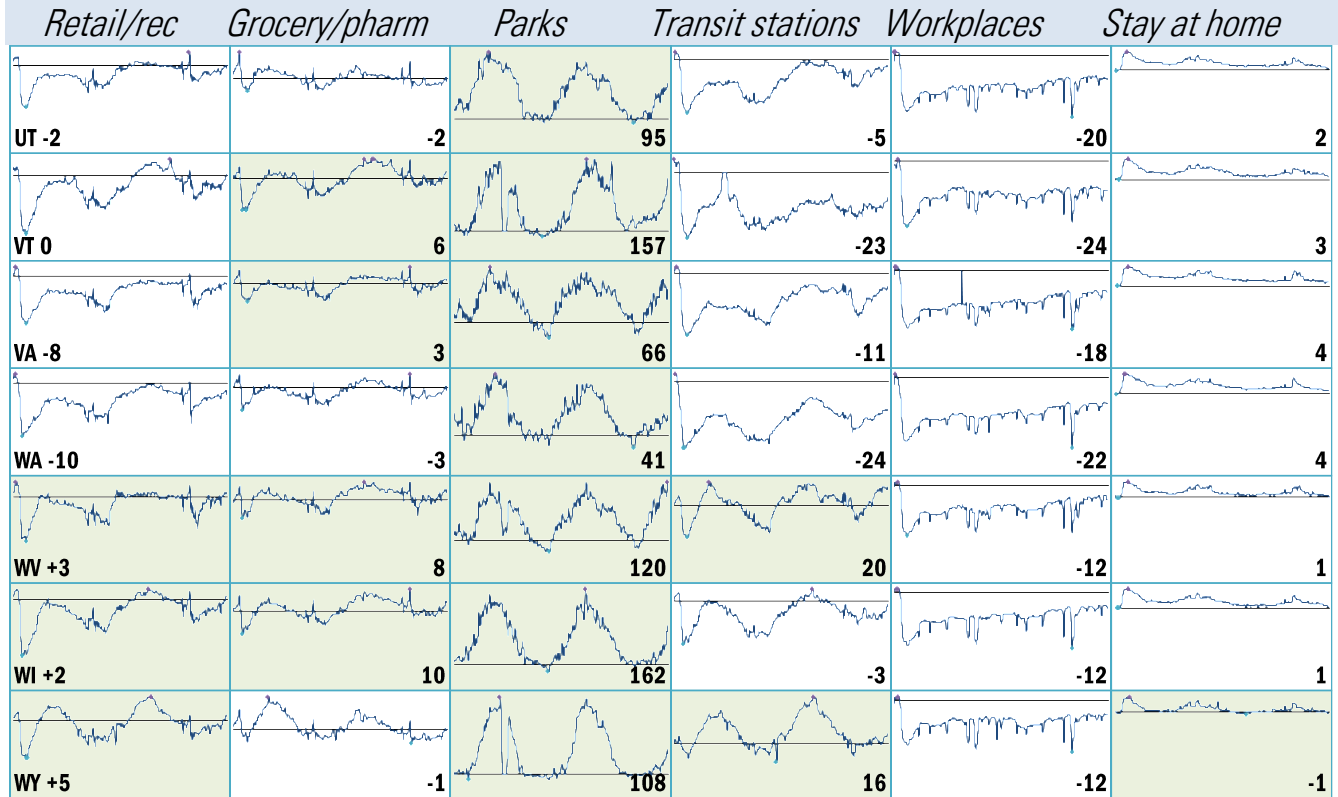
Source: [Google Mobility Reports](#), TrendMacro calculations

Make America move again: Mobility vs Jan 3–Feb 6 2020 baseline ■ Positive

	<i>Retail/rec</i>	<i>Grocery/pharm</i>	<i>Parks</i>	<i>Transit stations</i>	<i>Workplaces</i>	<i>Stay at home</i>
NH +1		8	134	-24	-17	2
NJ -7		2	80	-21	-21	3
NM -7		-3	29	-4	-16	2
NY -13		-5	47	-28	-21	3
NC -5		4	65	-11	-16	2
ND +4		-1	68	4	-8	1
OH +0		0	159	-1	-14	1
OK +3		5	65	21	-10	1
OR -8		-1	41	-20	-19	3
PA -4		3	101	-22	-16	2
RI -6		-5	175	-40	-19	2
SC +2		9	64	20	-11	2
SD +14		23	175	37	-6	0
TN +1		9	96	1	-12	1
TX -7		-1	8	-7	-17	2

Source: [Google Mobility Reports](https://www.google.com/covid19/mobility/), TrendMacro calculations

Make America move again: Mobility vs Jan 3–Feb 6 2020 baseline ■ Positive



Source: [Google Mobility Reports](#), TrendMacro calculations