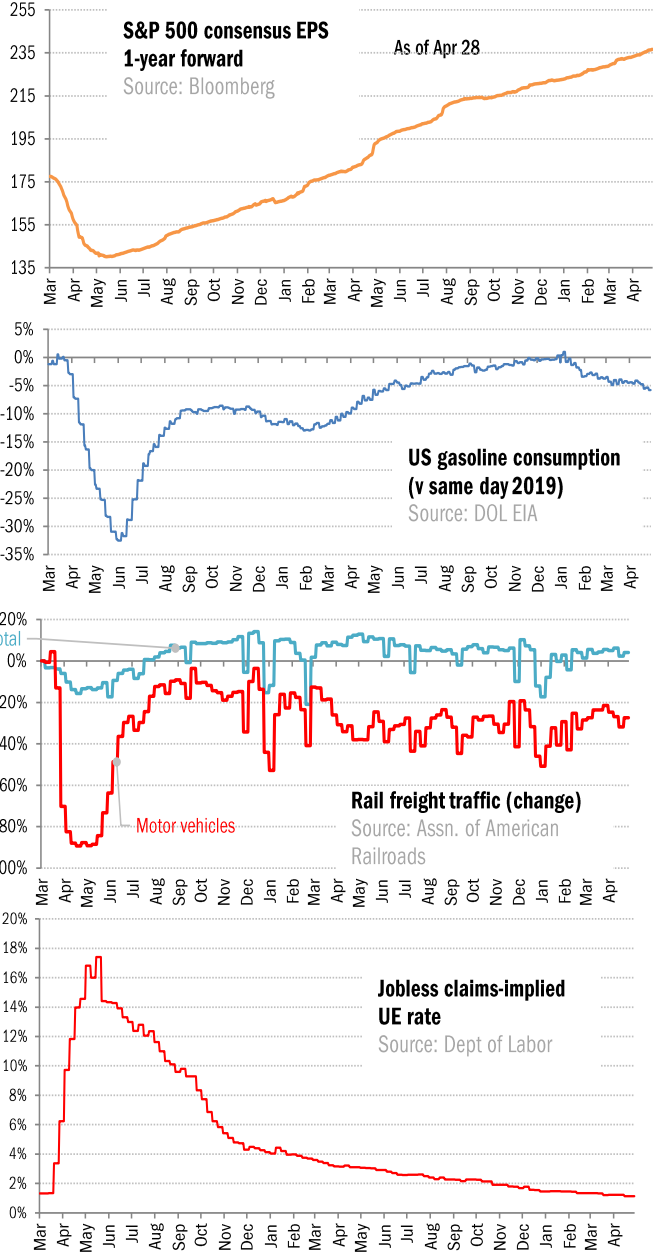
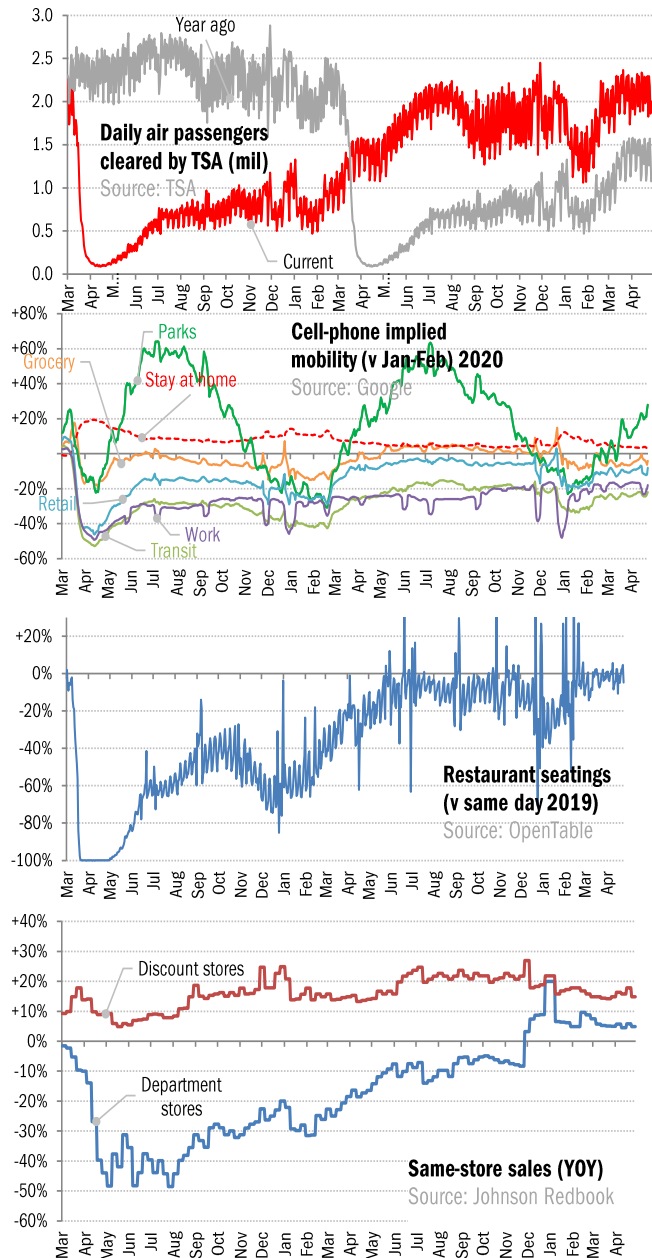


Data Insights: High-Frequency Post-Virus US Recovery Monitor

Thursday, April 28, 2022

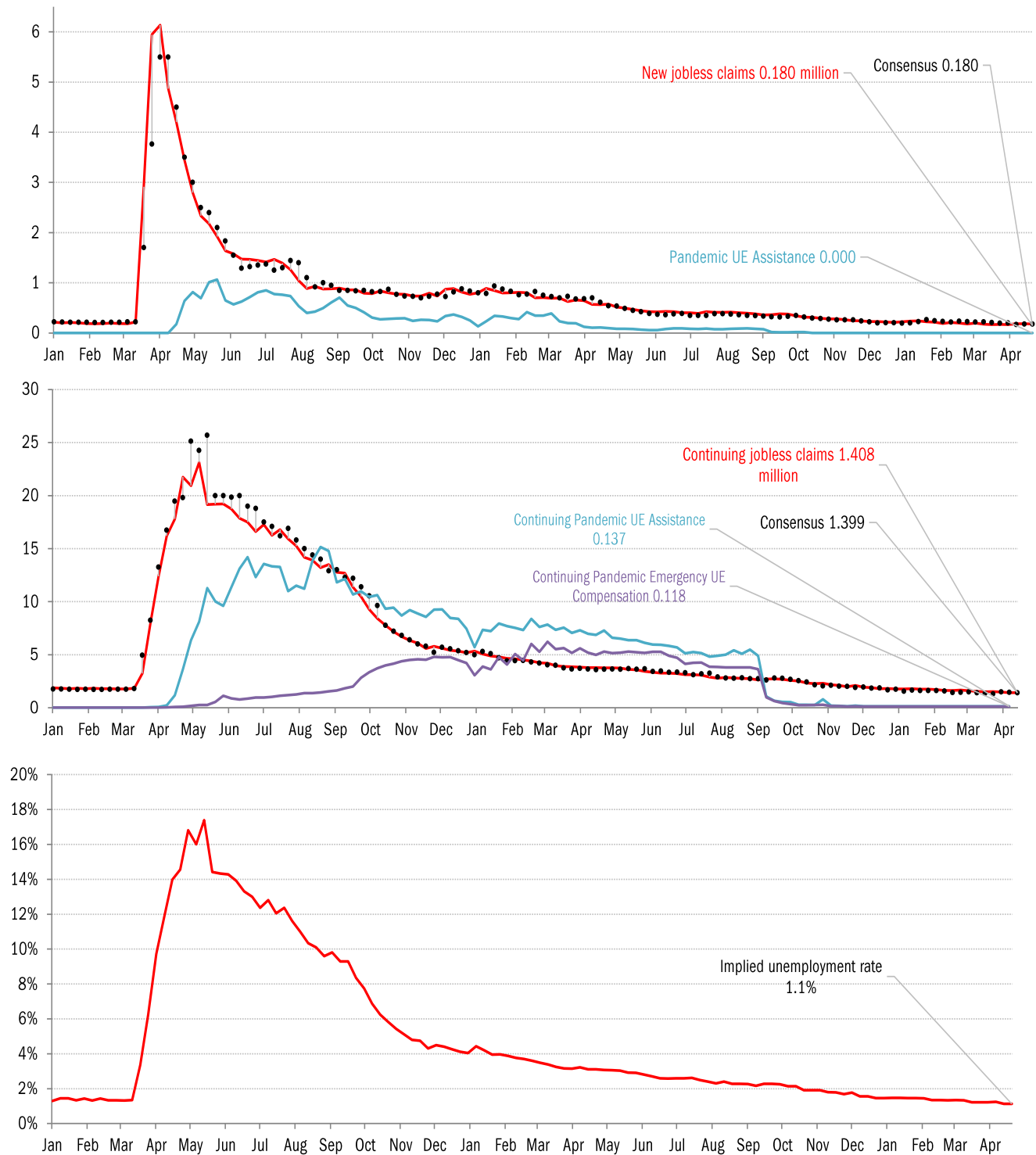
The US high-frequency macro data dashboard

(state level and other detail in subsequent charts)



Source: As indicated, TrendMacro calculations

High-frequency view of the US labor market: weekly unemployment claims (millions)

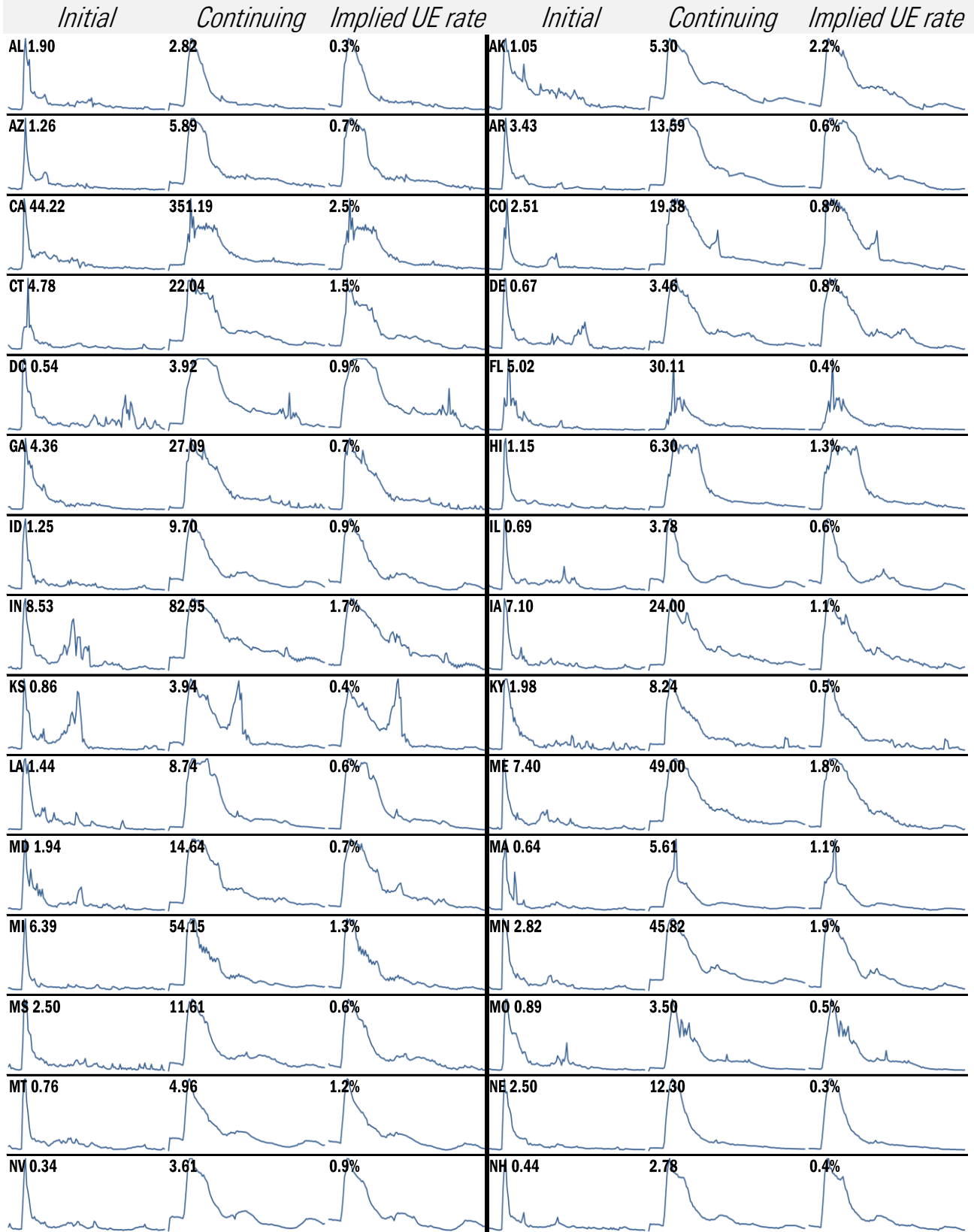


Source: Department of Labor, Bloomberg, TrendMacro calculations

For more information contact us:

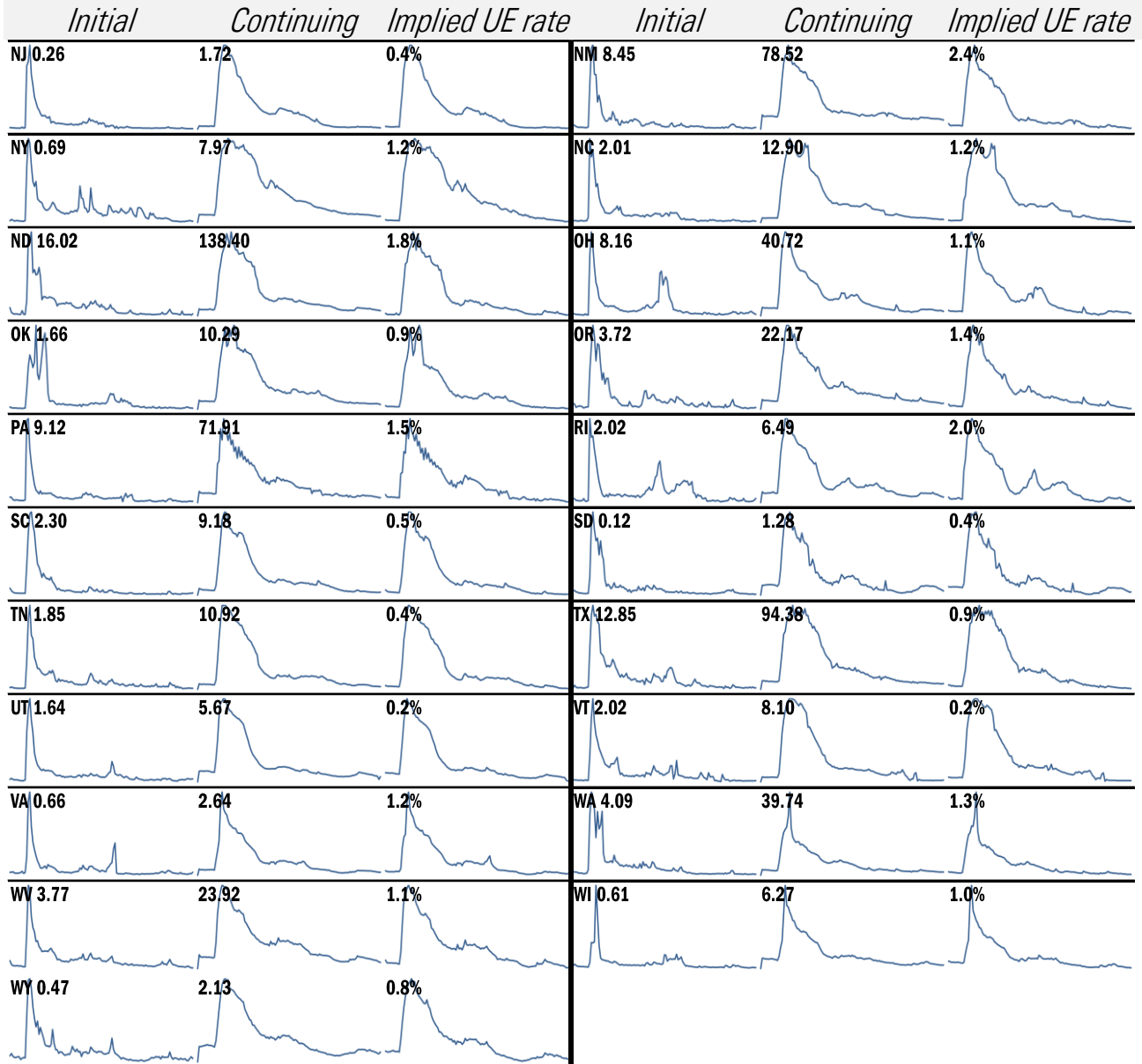
Donald Luskin: 312 273 6766 don@trendmacro.com
 Thomas Demas: 704 552 3625 tdemas@trendmacro.com

State by state unemployment insurance claims (thousands)



Source: Department of Labor, TrendMacro calculations

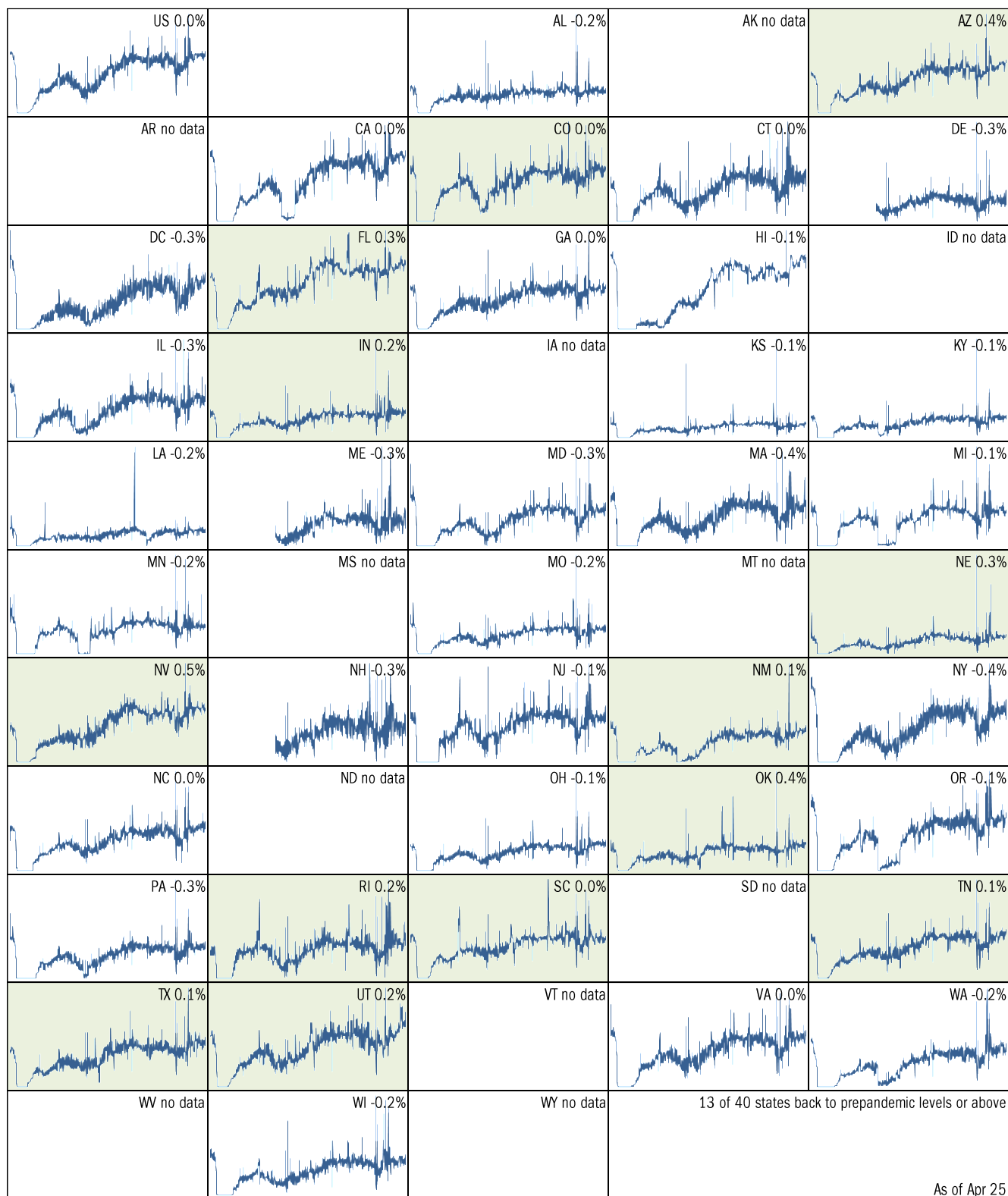
State by state unemployment insurance claims (thousands)



Source: Department of Labor, TrendMacro calculations

Make America eat again:

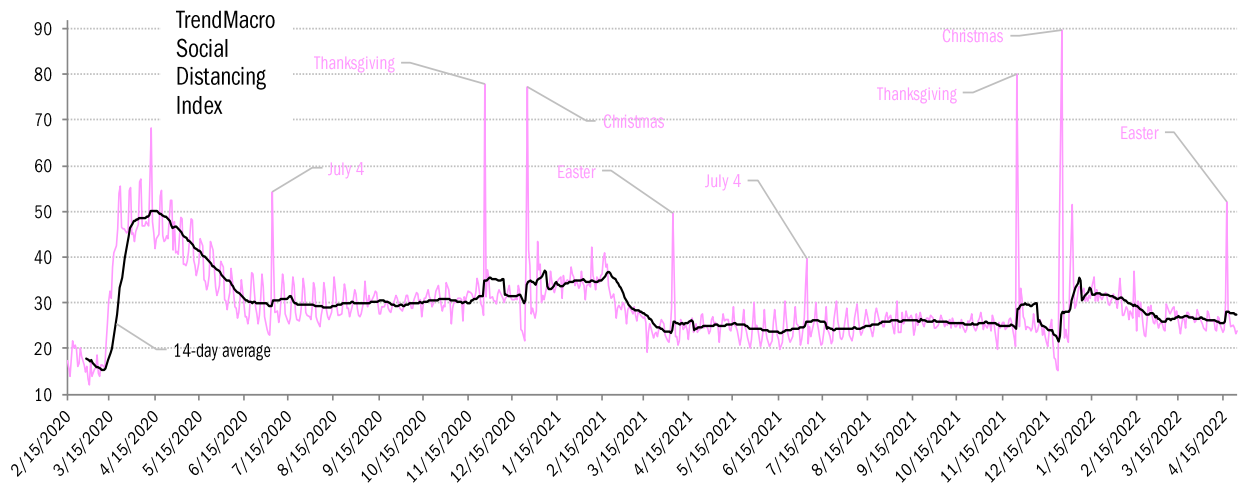
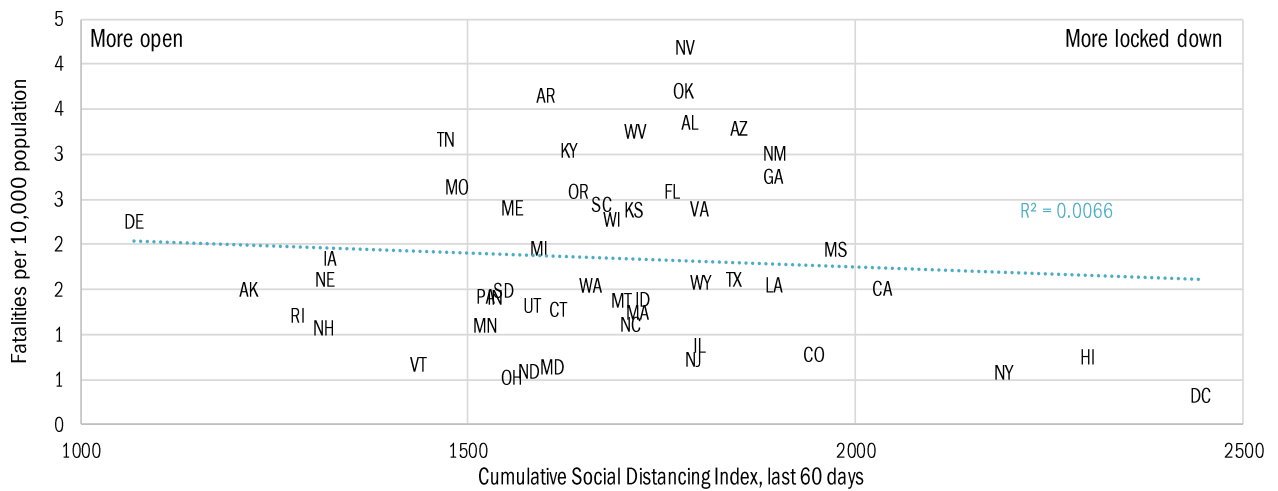
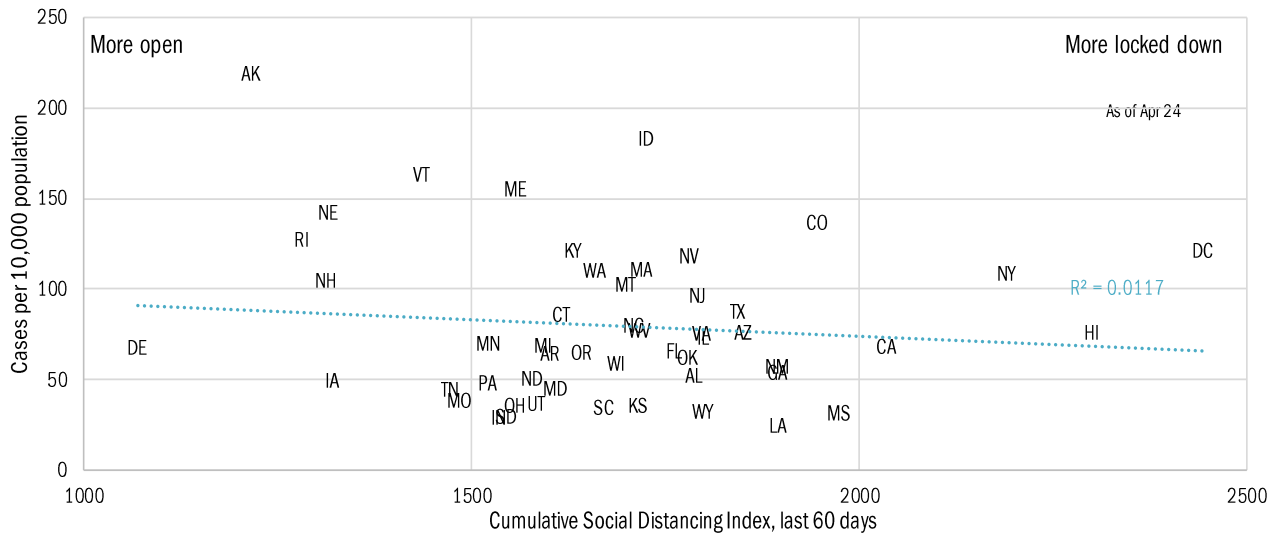
Seated diners in restaurants compared to 2019... Feb 2020 to present ■ Positive



Source: [Open Table](#), TrendMacro calculations

Re-opening the economy amidst ongoing pandemic risk

Covid-19 fatalities and cases *vs* social distancing measured by cell-phone mobility data



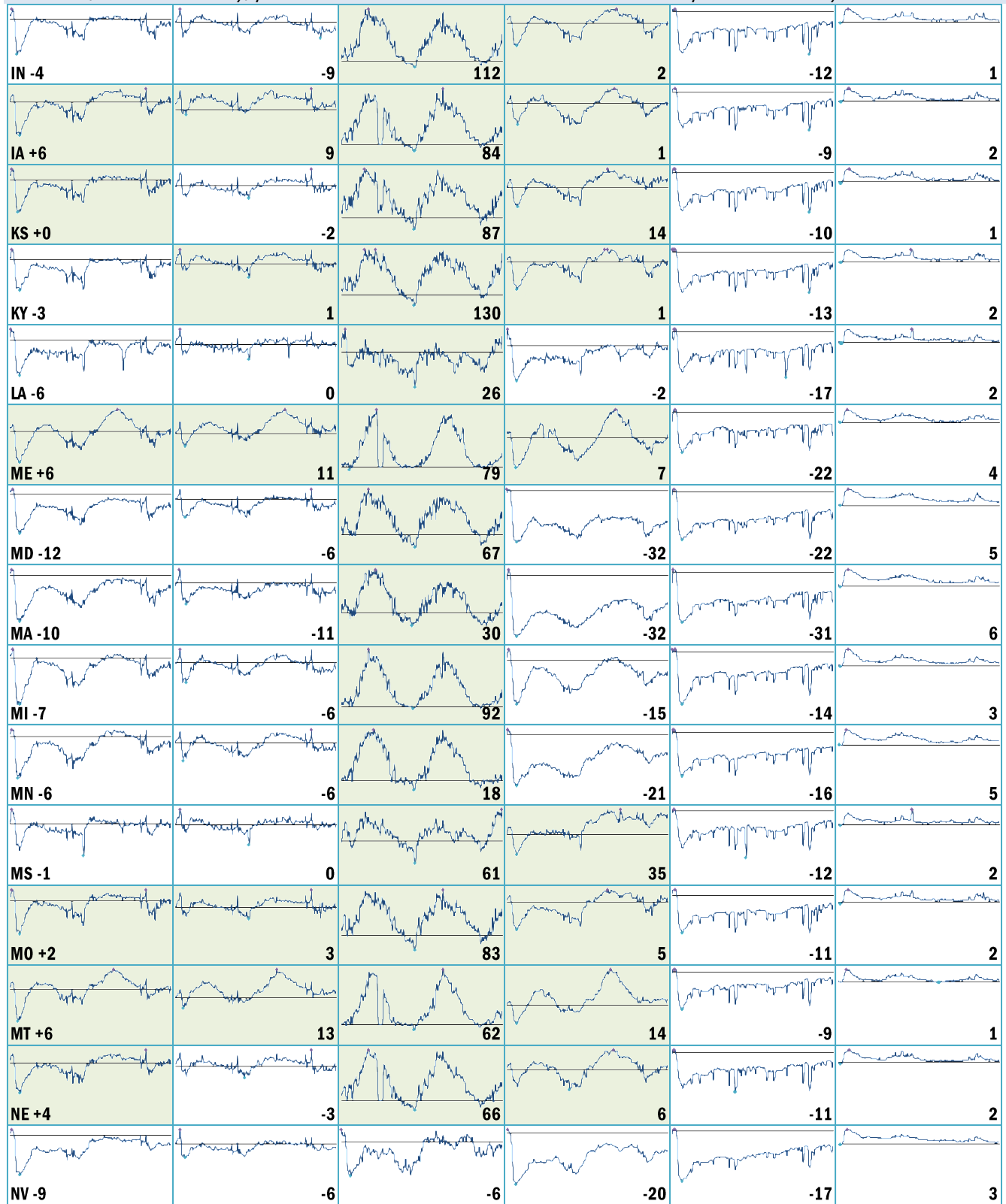
Source: [Google](#), after [University of Maryland Impact Analysis Platform](#), [Johns Hopkins](#), TrendMacro calcs

Make America move again: Mobility vs Jan 3–Feb 6 2020 baseline ■ Positive

	<i>Retail/rec</i>	<i>Grocery/pharm</i>	<i>Parks</i>	<i>Transit stations</i>	<i>Workplaces</i>	<i>Stay at home</i>
US -8		-4	28	-22	-18	3
AL -3		5	61	9	-9	2
AK +6		4	59	1	-10	3
AZ -10		-9	-15	-15	-19	3
AR +2		1	110	22	-8	2
CA -18		-12	-8	-36	-25	4
CO -11		-6	23	-21	-21	3
CT -5		-5	57	-12	-20	3
DE -1		-1	26	-29	-22	4
DC -29		-23	-3	-50	-32	7
FL -10		-3	0	-19	-15	3
GA -8		0	60	-7	-16	2
HI -19		-12	-15	-25	-25	5
ID +2		4	94	17	-10	1
IL -10		-6	36	-23	-19	3

Source: [Google Mobility Reports](#), TrendMacro calculations

Make America move again: Mobility vs Jan 3–Feb 6 2020 baseline ■ Positive



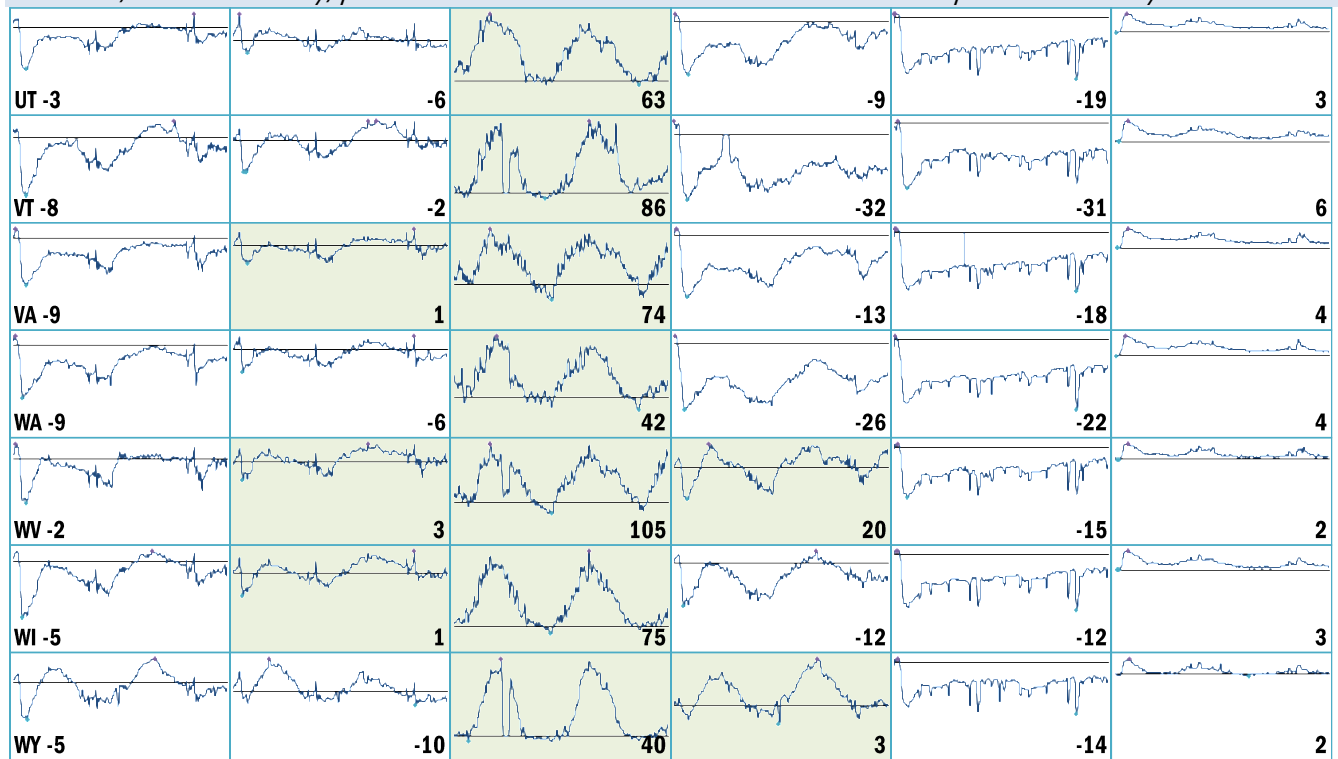
Source: [Google Mobility Reports](#), TrendMacro calculations

Make America move again: Mobility vs Jan 3–Feb 6 2020 baseline ■ Positive

	<i>Retail/rec</i>	<i>Grocery/pharm</i>	<i>Parks</i>	<i>Transit stations</i>	<i>Workplaces</i>	<i>Stay at home</i>
NH -2		4	76	-26	-17	4
NJ -10		-4	71	-24	-28	5
NM -8		-7	23	-4	-16	3
NY -18		-11	21	-33	-29	5
NC -7		1	68	-13	-20	3
ND -5		-11	-5	-8	-11	4
OH -5		-8	108	-7	-15	3
OK -1		-1	45	16	-9	2
OR -8		-4	36	-22	-19	4
PA -7		-1	77	-25	-17	4
RI -8		-10	140	-41	-25	4
SC +3		6	73	21	-13	2
SD +5		10	79	19	-7	3
TN 0		5	92	-2	-10	2
TX -8		-3	12	-9	-17	3

Source: [Google Mobility Reports](#), TrendMacro calculations

Make America move again: Mobility vs Jan 3–Feb 6 2020 baseline ■ Positive



Source: [Google Mobility Reports](https://www.google.com/covid19/mobility/), TrendMacro calculations