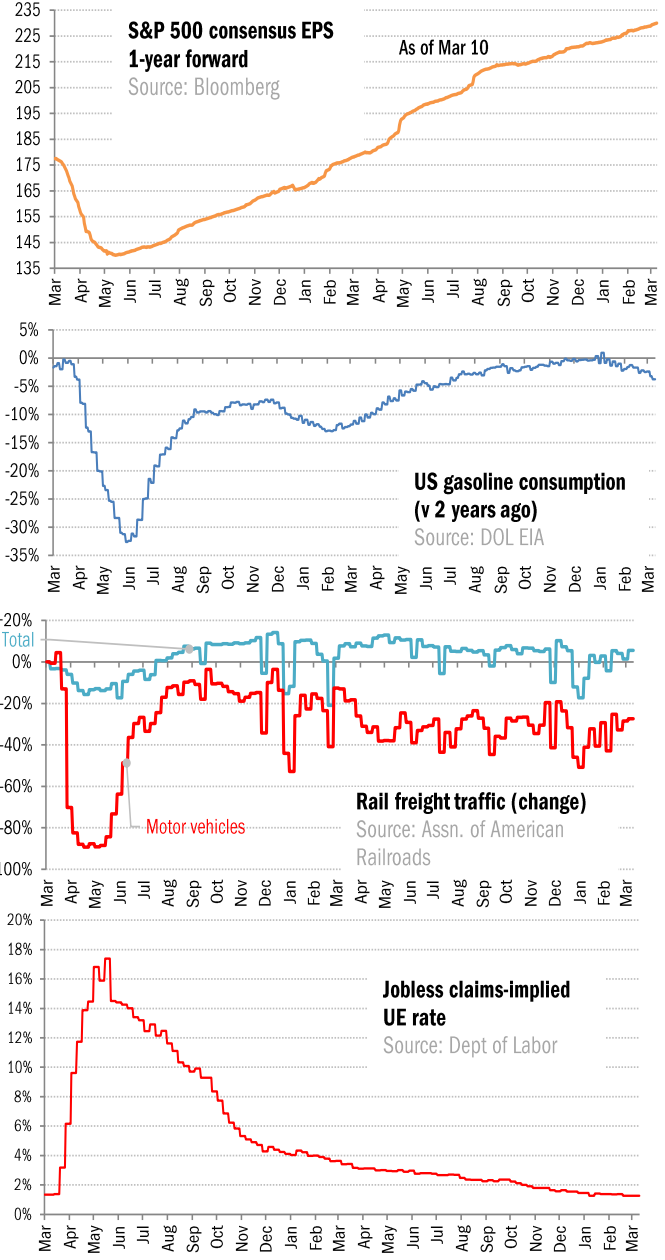
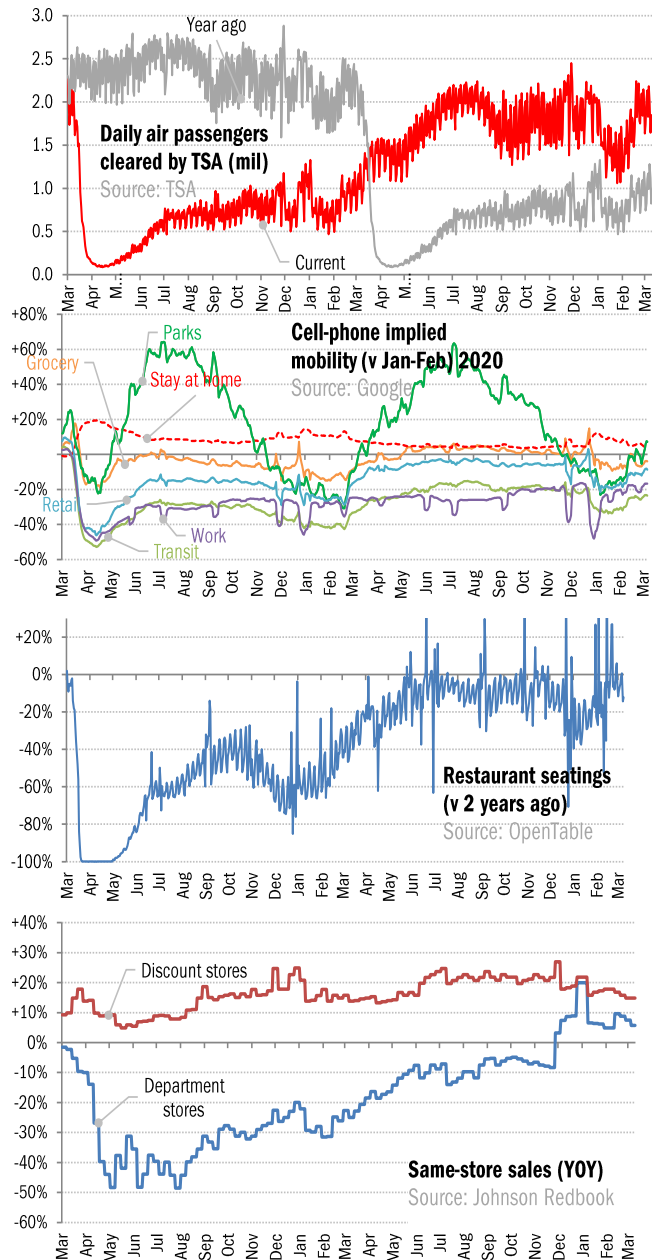


Data Insights: High-Frequency Post-Virus US Recovery Monitor

Thursday, March 10, 2022

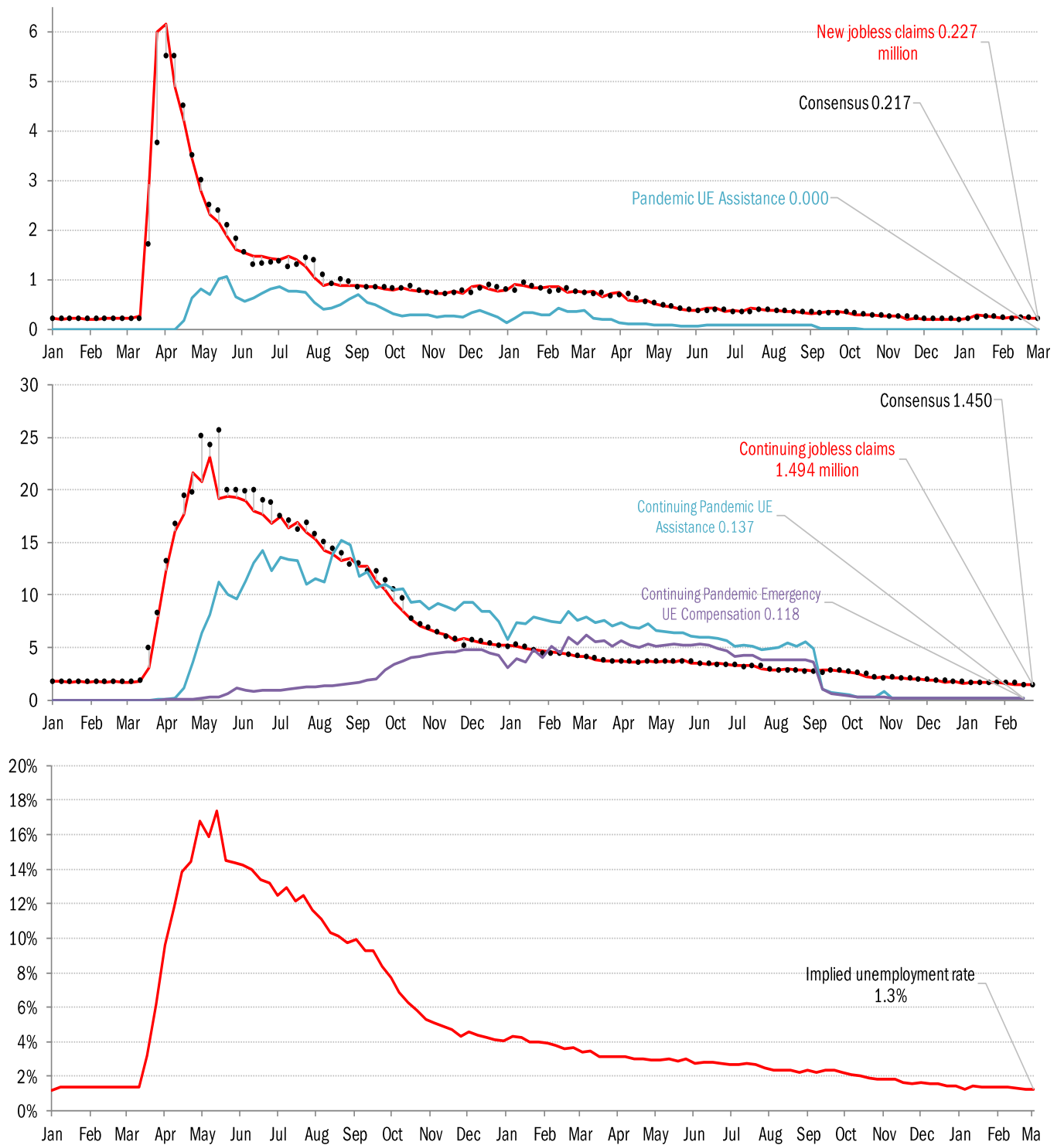
The US high-frequency macro data dashboard

(state level and other detail in subsequent charts)



Source: As indicated, TrendMacro calculations

High-frequency view of the US labor market: weekly unemployment claims (millions)

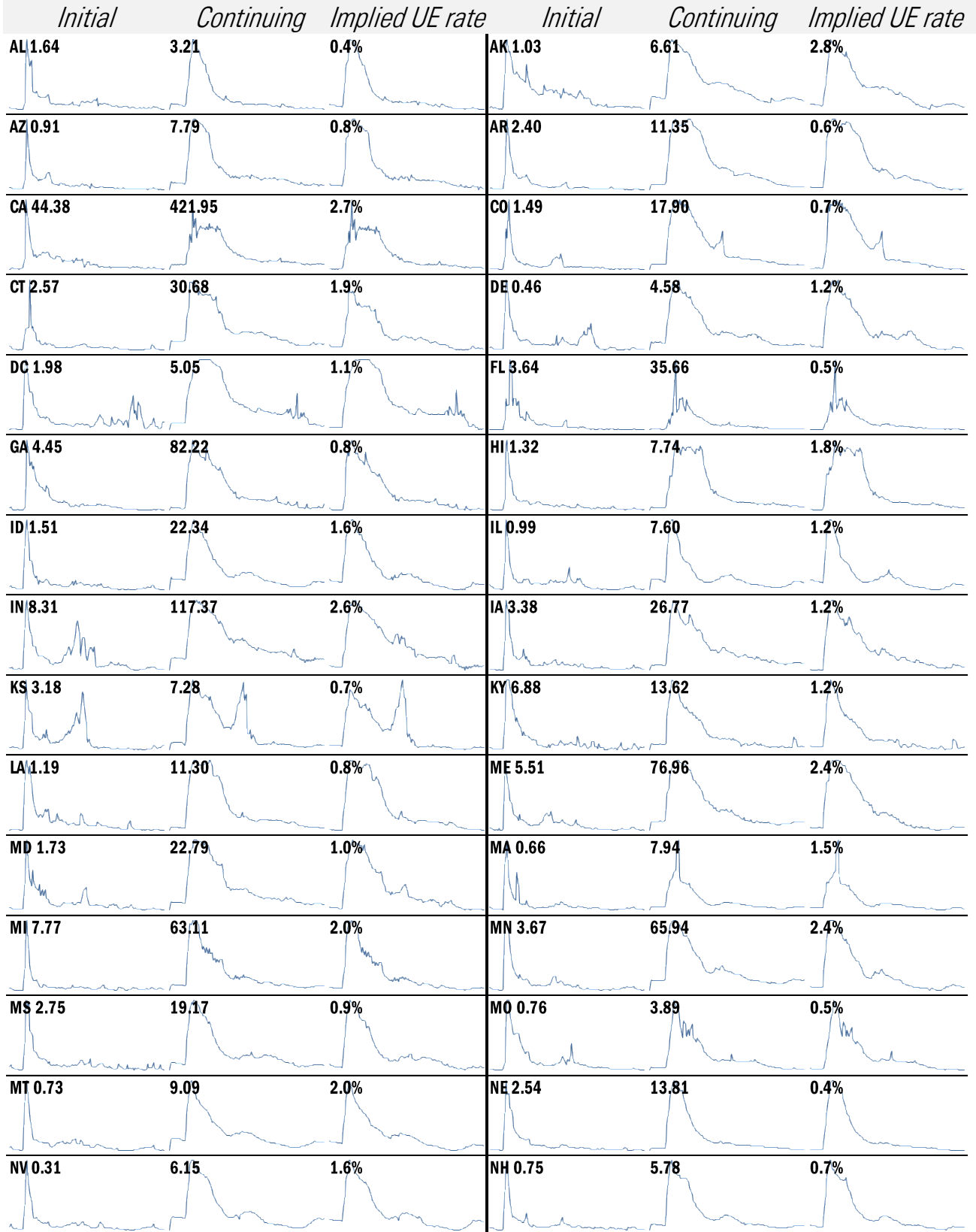


Source: Department of Labor, Bloomberg, TrendMacro calculations

For more information contact us:

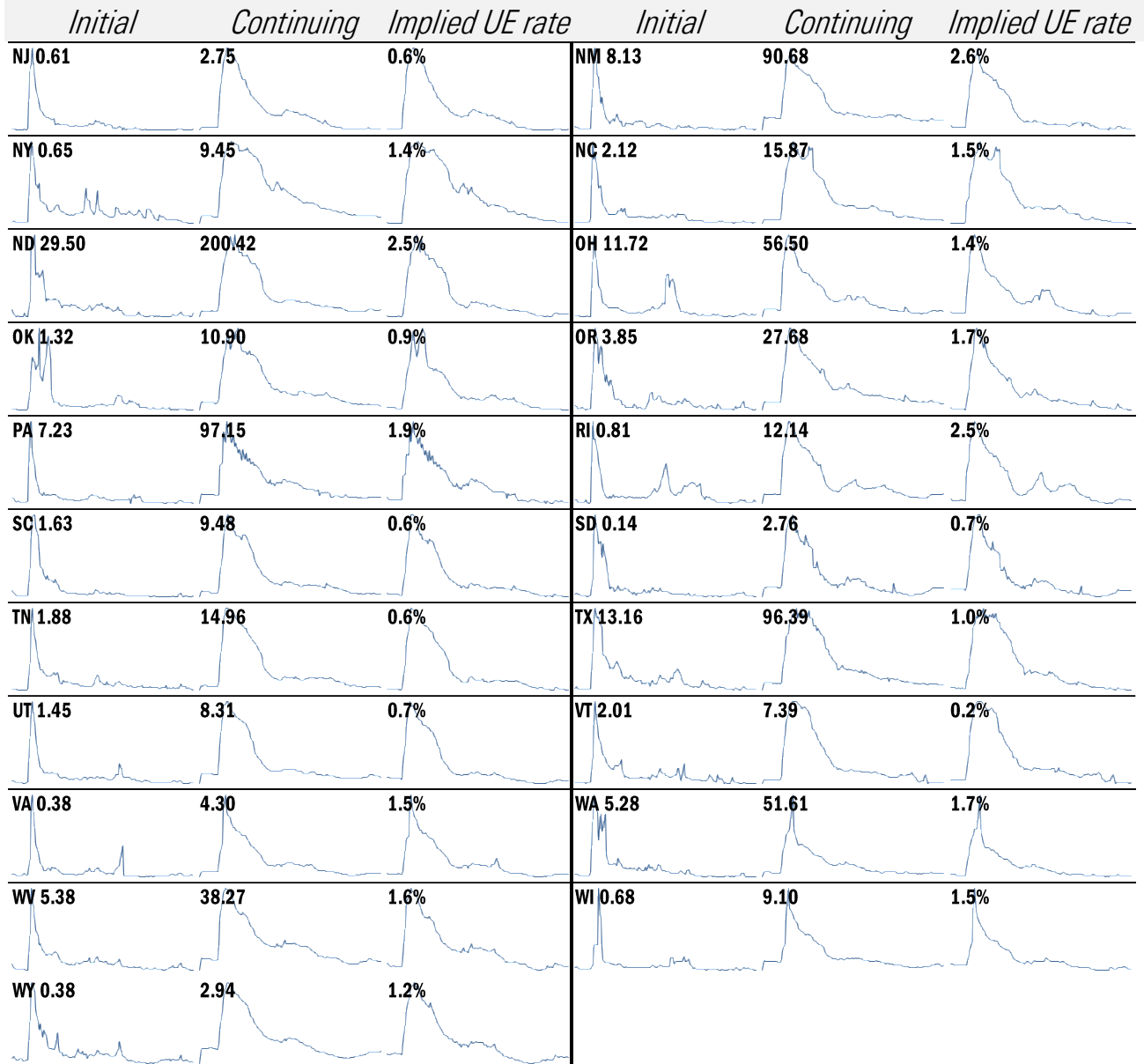
Donald Luskin: 312 273 6766 don@trendmacro.com
 Thomas Demas: 704 552 3625 tdemas@trendmacro.com

State by state unemployment insurance claims (thousands)



Source: Department of Labor, TrendMacro calculations

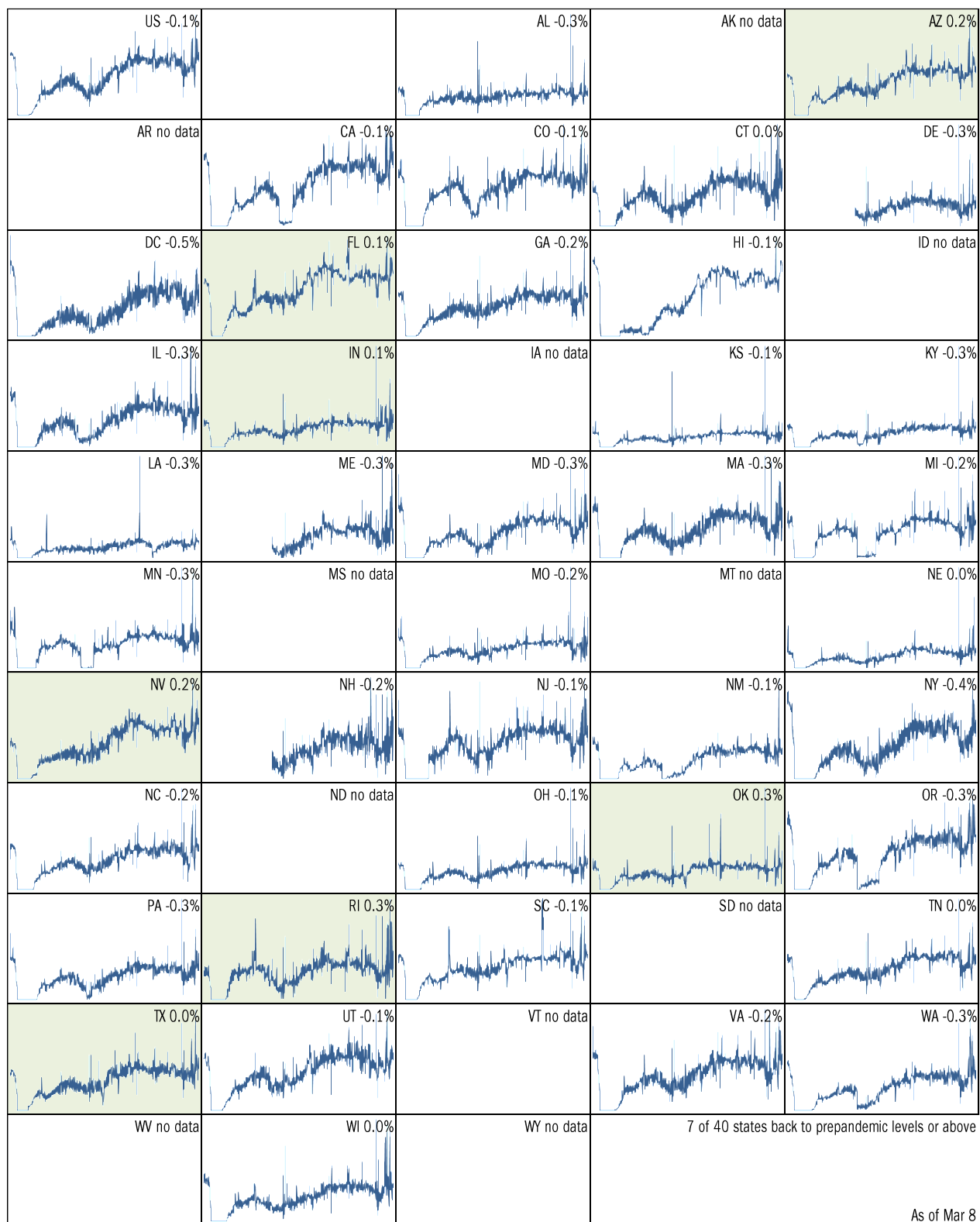
State by state unemployment insurance claims (thousands)



Source: Department of Labor, TrendMacro calculations

Make America eat again:

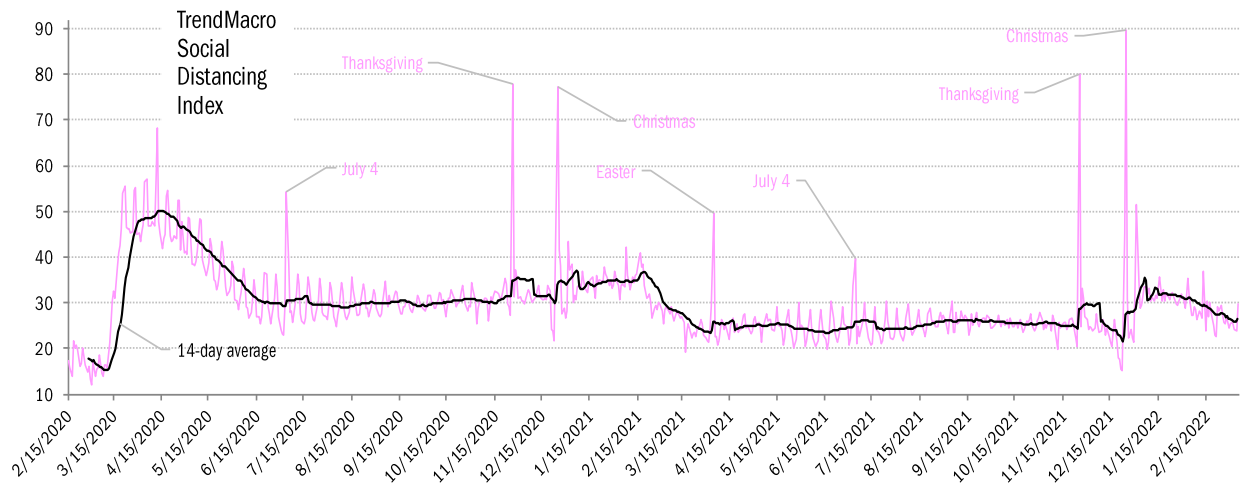
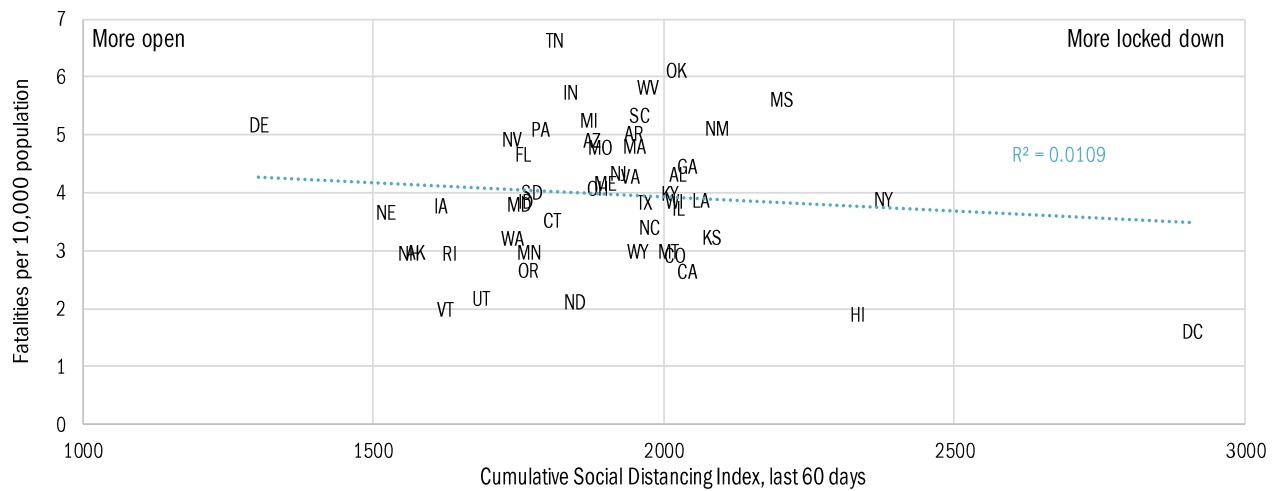
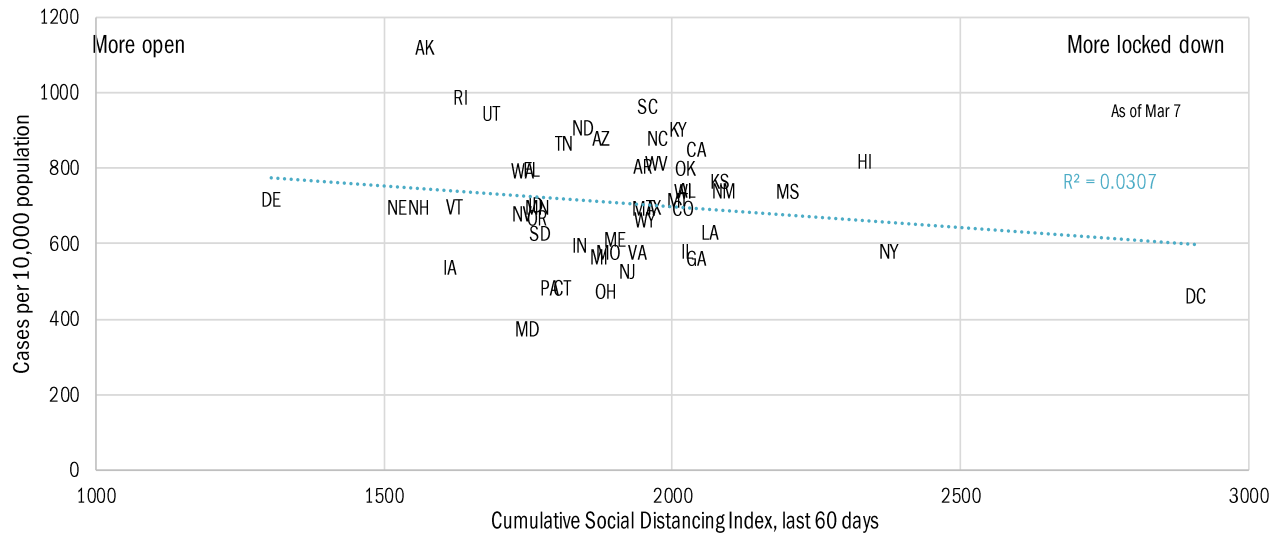
Seated diners in restaurants compared to 2019... Feb 2020 to present ■ Positive



Source: [Open Table](#), TrendMacro calculations

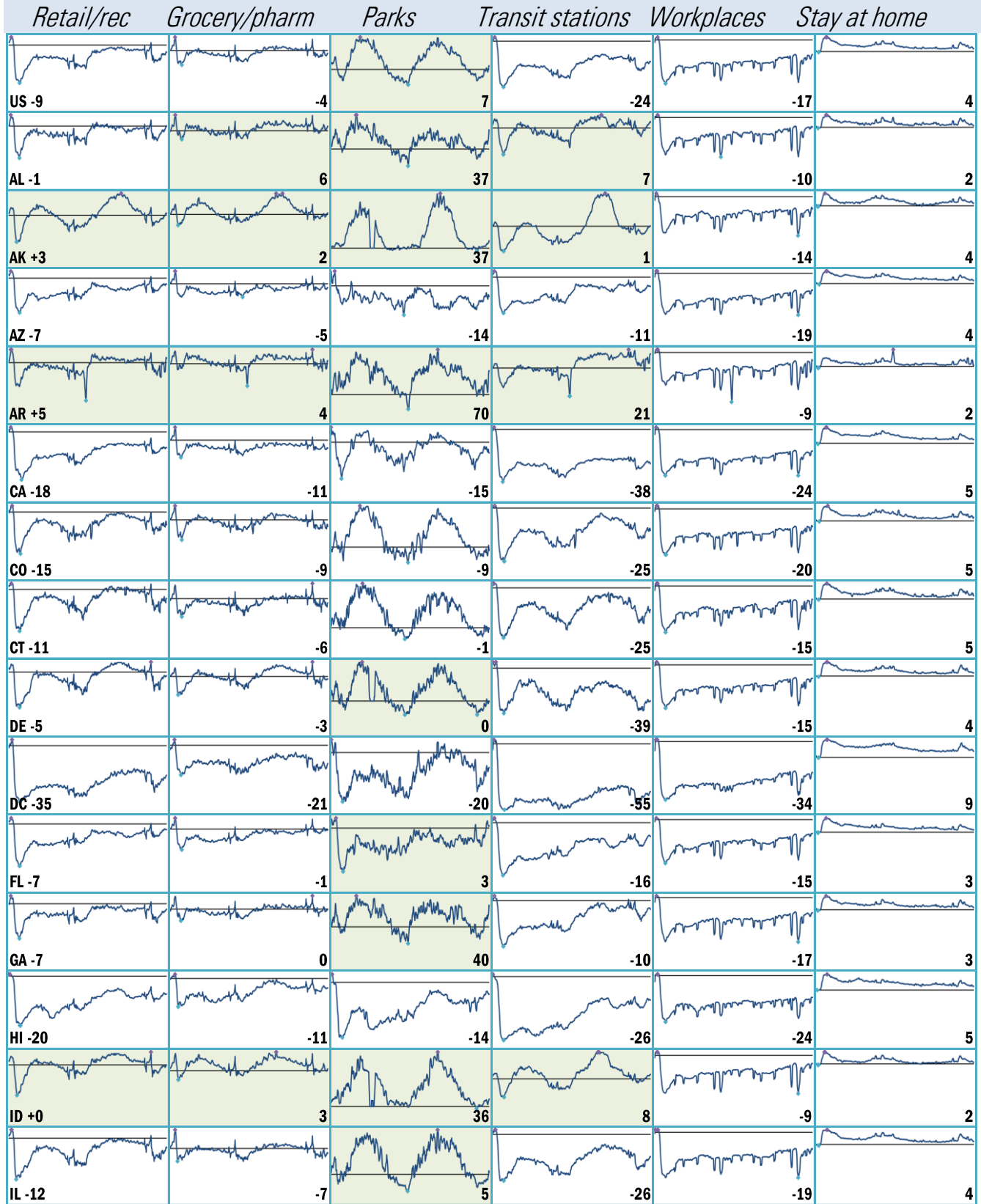
Re-opening the economy amidst ongoing pandemic risk

Covid-19 fatalities and cases *vs* social distancing measured by cell-phone mobility data



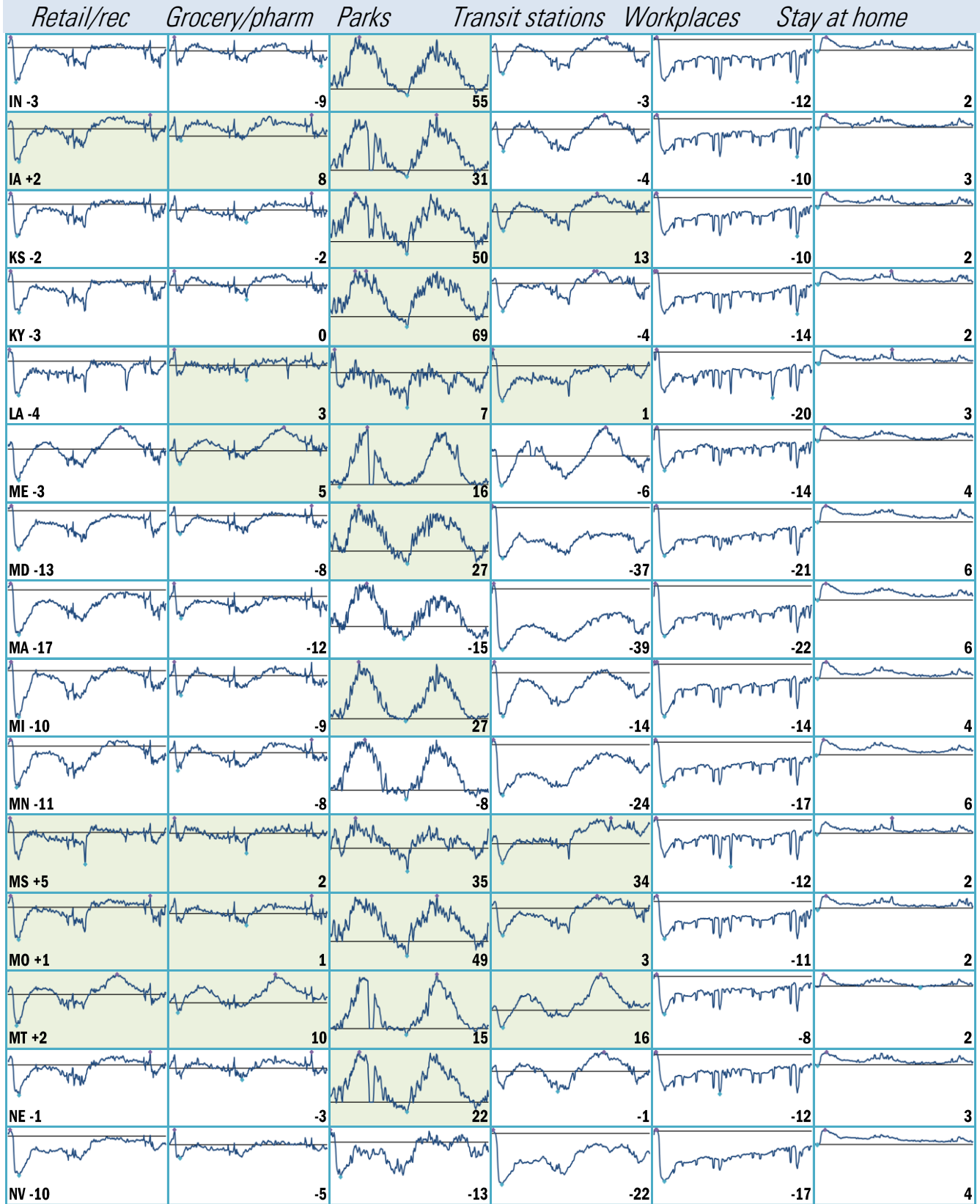
Source: [Google](#), after [University of Maryland Impact Analysis Platform](#), [Johns Hopkins](#), TrendMacro calcs

Make America move again: Mobility vs Jan 3–Feb 6 2020 baseline ■ Positive



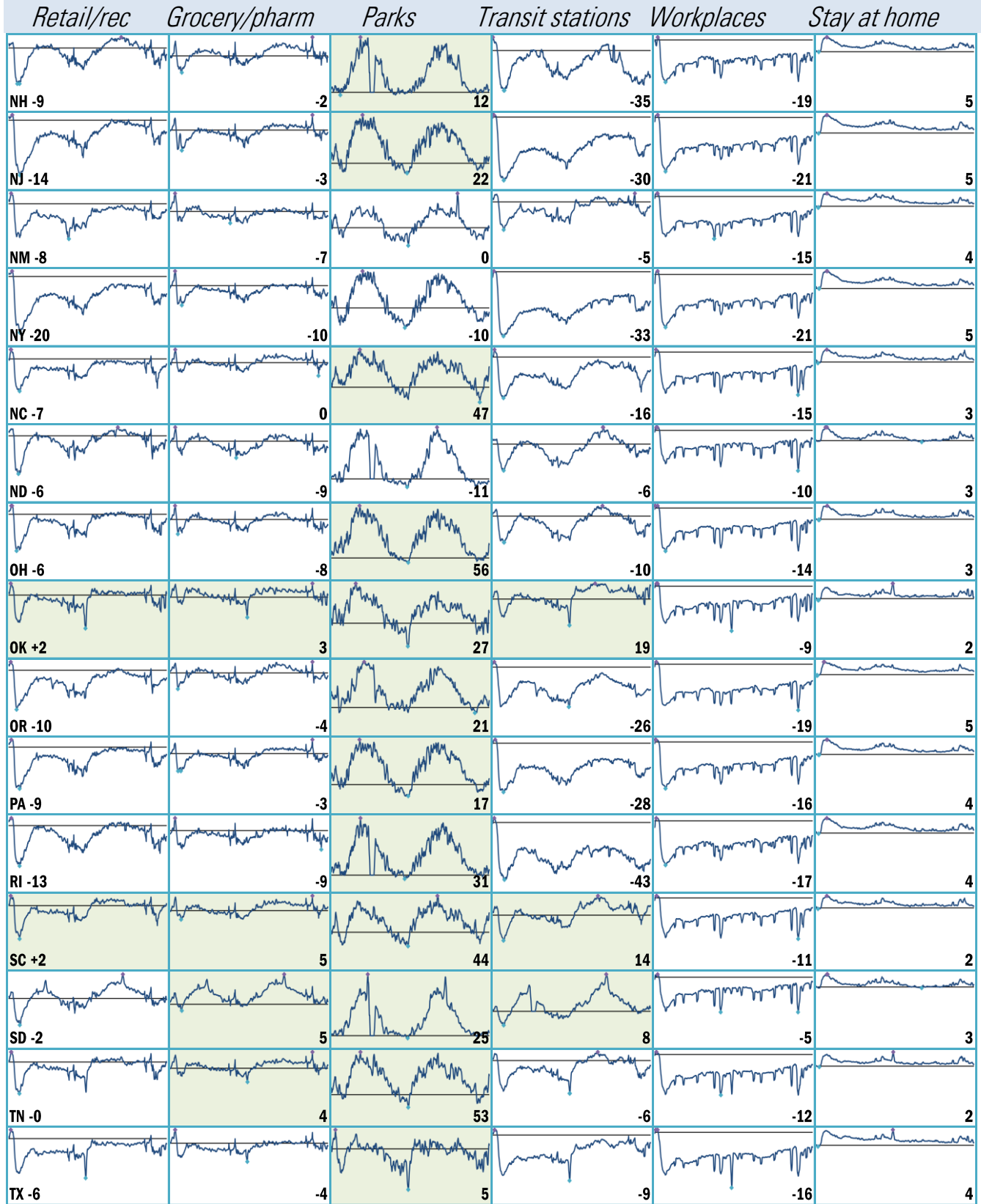
Source: [Google Mobility Reports](https://www.google.com/covid19/mobility/), TrendMacro calculations

Make America move again: Mobility vs Jan 3–Feb 6 2020 baseline ■ Positive



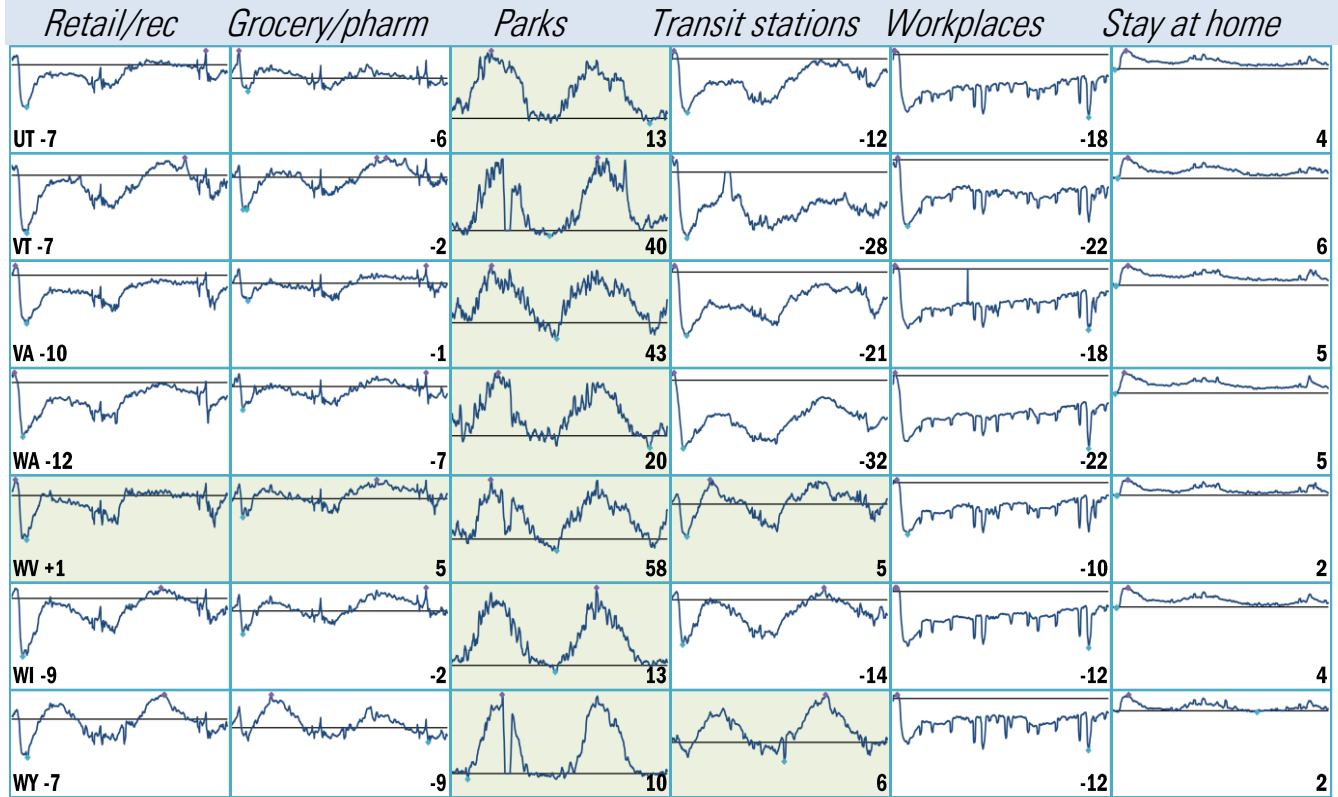
Source: [Google Mobility Reports](https://www.google.com/covid19/mobility/), TrendMacro calculations

Make America move again: Mobility vs Jan 3–Feb 6 2020 baseline ■ Positive



Source: [Google Mobility Reports](https://www.google.com/covid19/mobility/), TrendMacro calculations

Make America move again: Mobility vs Jan 3–Feb 6 2020 baseline ■ Positive



Source: [Google Mobility Reports](https://www.google.com/covid19/mobility/), TrendMacro calculations