

Data Insights: Jobs

Friday, January 7, 2022

Today's jobs data: what you need to know

| | | | | |
|--|------------------|--------------------------|---------------------------------|--|
| Non-farm payrolls | Change Dec: +199 | Revision Nov: +39 | Revision Oct: +102 |  |
| Private payrolls | Change Dec: +211 | Revision Nov: +35 | Revision Oct: +86 | |
| Employment | Change Dec: +651 | | | |
| Unemployment | Change Dec: -483 | | | |
| Long-term unemployment | Change Dec: -253 | | | |
| Civilian labor force | Change Dec: +168 | 1.28 million below trend | More than all entrants employed | |
| Unemployment rate | Dec: 3.89% | Change Dec: -0.30% | | |
| Underemployment rate | Dec: 7.3% | Change Dec: -0.4% | | |
| Participation rate | Dec: 61.9% | Change Dec: unch | | |
| UE adjusted for participation | Dec: 9.9% | Change Dec: -0.28% | | |
| Average weeks unemployed | Dec: 28.6 | Change Dec: -0.5 | | |
| % longterm unemployed | Dec: 31.7% | Change Dec: -0.8% | | |
| Aggregate hours worked index | Dec: 110.7 | Change Dec: +0.2% | Revision Nov: -0 | |
| Average hourly earnings | Dec: +0.61% | Change Dec: +0.26% | Revision Nov: +0.10% | |
| Aggregate weekly earnings | Dec: 165.7 | Change Dec: +0.8% | Revision Nov: -0.3 | |
| Monthly job-finding probability | Dec: 36.2% | Change Dec: +1.5% | | |
| Monthly separation probability | Dec: 1.5% | Change Dec: +0.0% | | |
| % involuntary part-time | Dec: 2.5% | Change Dec: -0.2% | | |
| "Household" vs "Payroll" jobs | Change Dec: +102 | | | |

Source: Bureau of Labor Statistics, TrendMacro calculations

For more information contact us:

Donald Luskin: 312 273 6766 don@trendmacro.com
 Thomas Demas: 704 552 3625 tdemas@trendmacro.com

Today's jobs data: a deeper dive

| | | | | |
|-----------------------------------|------------------|--------------------|--------------------|--|
| Non-farm payrolls SA | Change Dec: +199 | Revision Nov: +39 | Revision Oct: +102 | |
| Non-farm payrolls NSA | Change Dec: +72 | Revision Nov: +75 | Revision Oct: +19 | |
| Birth-death adjustment | Change Dec: -49 | | | |
| Employment | Change Dec: +651 | | | |
| Unemployment rate | Dec: 3.89% | Change Dec: -0.30% | | |
| White employment | Change Dec: +665 | | | |
| White unemployment rate | Dec: 3.2% | Change Dec: -0.5% | | |
| Black employment | Change Dec: -86 | | | |
| Black unemployment rate | Dec: 7.1% | Change Dec: 0.6% | | |
| Hispanic employment | Change Dec: -5 | | | |
| Hispanic unemployment rate | Dec: 4.9% | Change Dec: -0.3% | | |
| Asian employment | Change Dec: -36 | | | |
| Asian unemployment rate | Dec: 3.8% | Change Dec: -0.1% | | |
| HS only employment | Change Dec: +323 | | | |
| HS only unemployment rate | Dec: 4.5% | Change Dec: -0.3% | | |
| Men employment | Change Dec: +76 | | | |
| Men unemployment rate | Dec: 3.9% | Change Dec: -0.3% | | |
| Women employment | Change Dec: +575 | | | |
| Women unemployment rate | Dec: 3.9% | Change Dec: -0.3% | | |

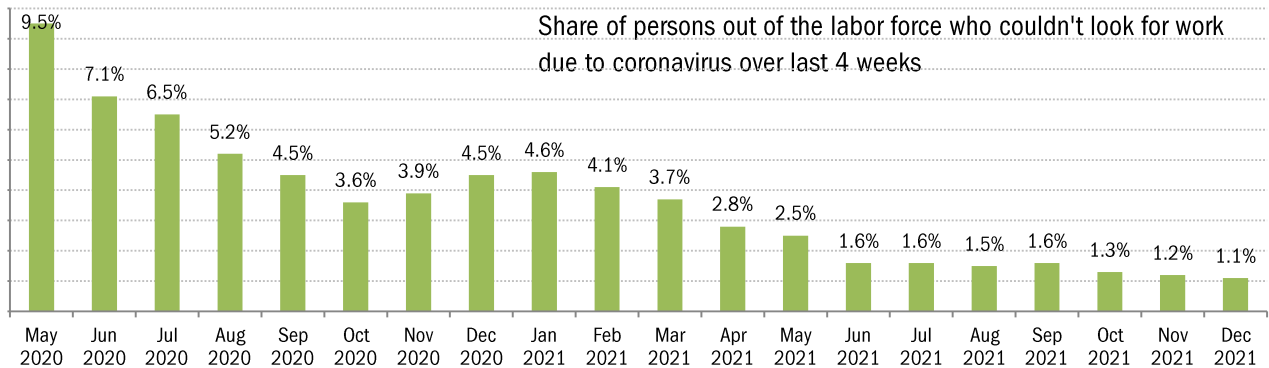
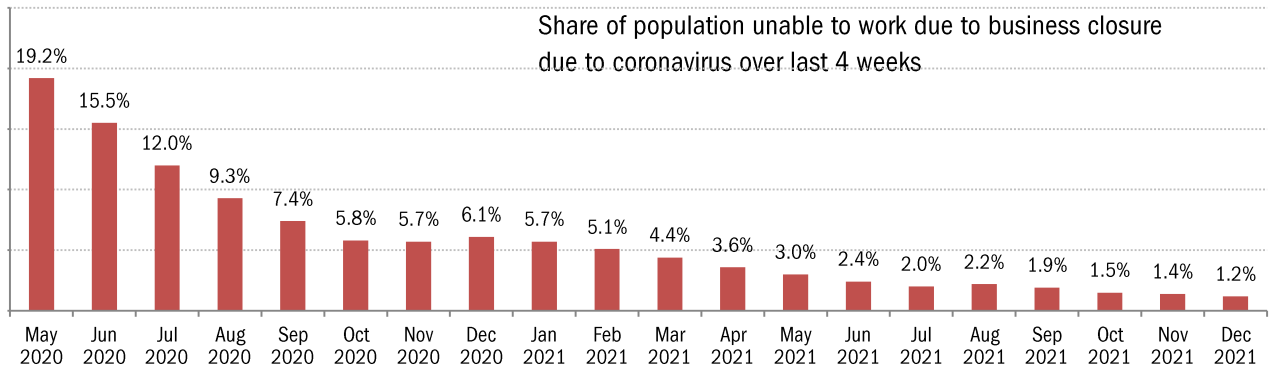
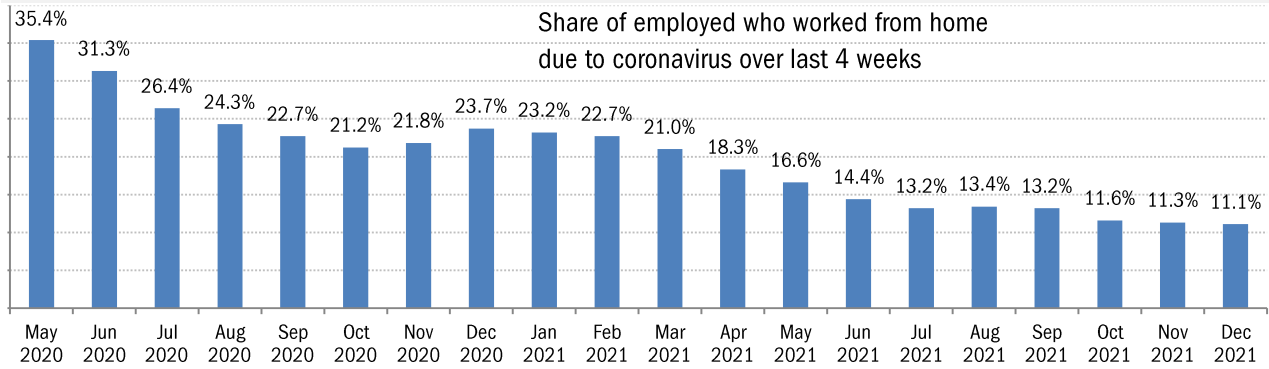
Source: Bureau of Labor Statistics, TrendMacro calculations

TrendMacro Payroll Model based on contemporaneous labor market statistics

| ADP Payrolls | ISM Manu Employ Index | ISM Services Employ Index | Change continuing claims | Initial claims | Challenger Layoffs | NFIB Hiring Plans | NFIB Employ |
|----------------|--------------------------|-------------------------------|-----------------------------|----------------|-----------------------|-------------------|-------------|
| +807 | 54.2 | 54.9 | -210 | 227 | 19,052 | 28 | -1 |
| Model estimate | Actual | Actual beat(+) or miss (-) | | | | | |
| +487 | +199 | -288 | | | | | |

Source: ADP, ISM, DOL, Challenger, NFIB, BLS, TrendMacro calculations

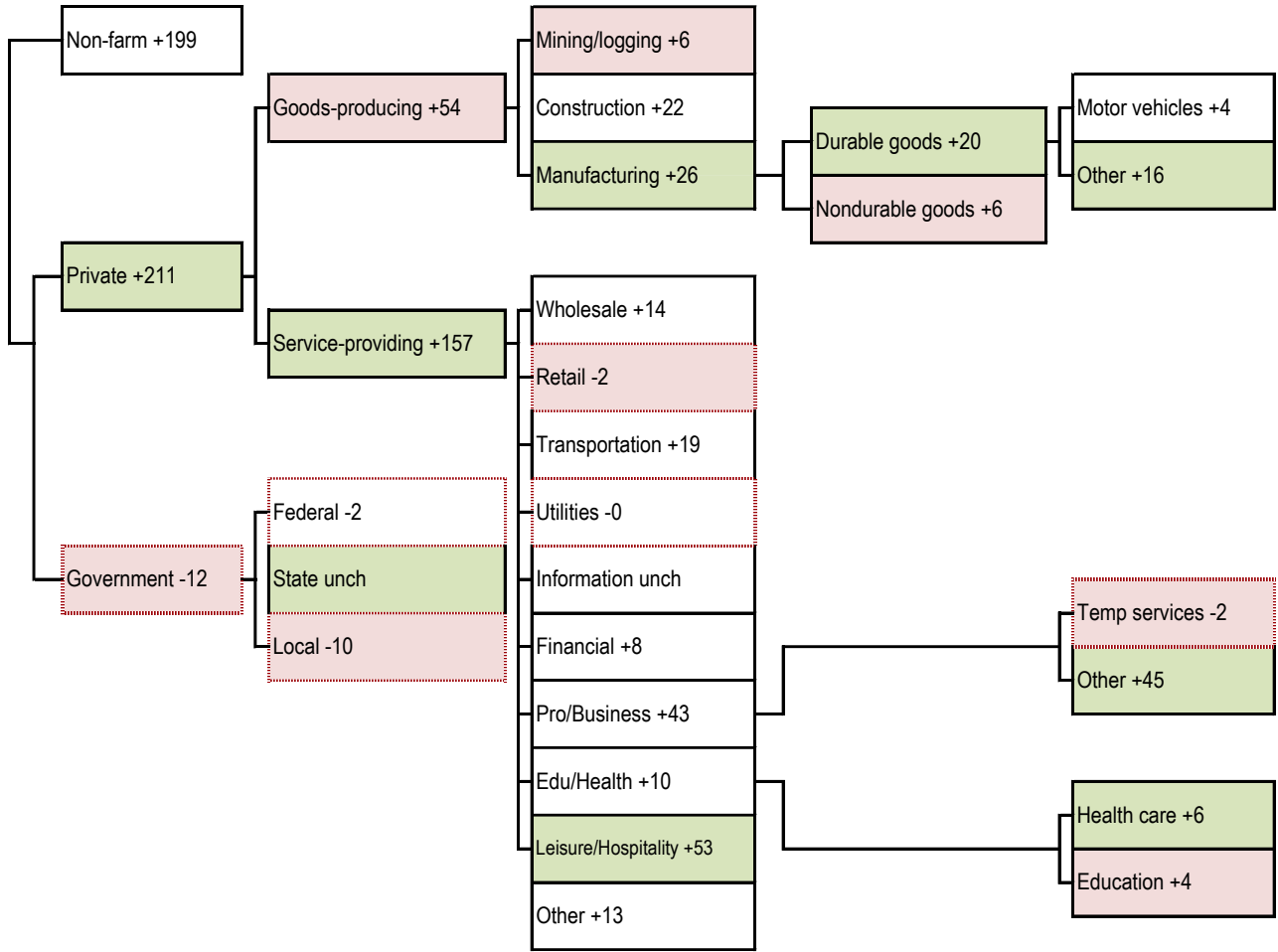
Labor market adaptation to pandemic conditions



Source: [BLS](#) TrendMacro calculations

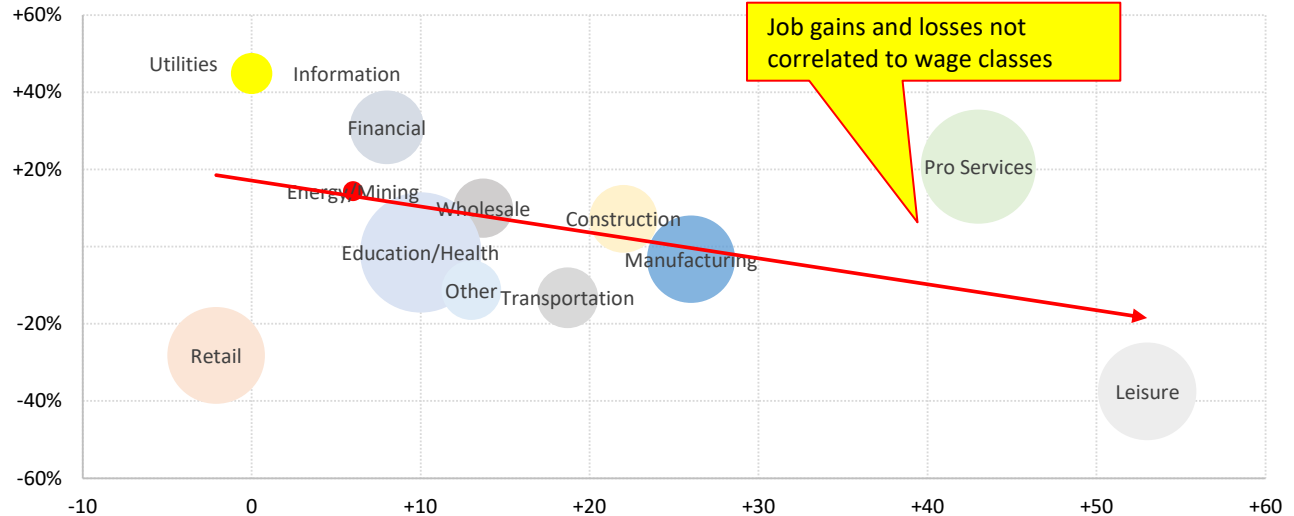
Today's payroll data: what you need to know -- where did the jobs come from?

Sequential month change, thousands SA --- Net job losses Biggest change per detail module: ■ best ■ worst



Where is the pay coming from?

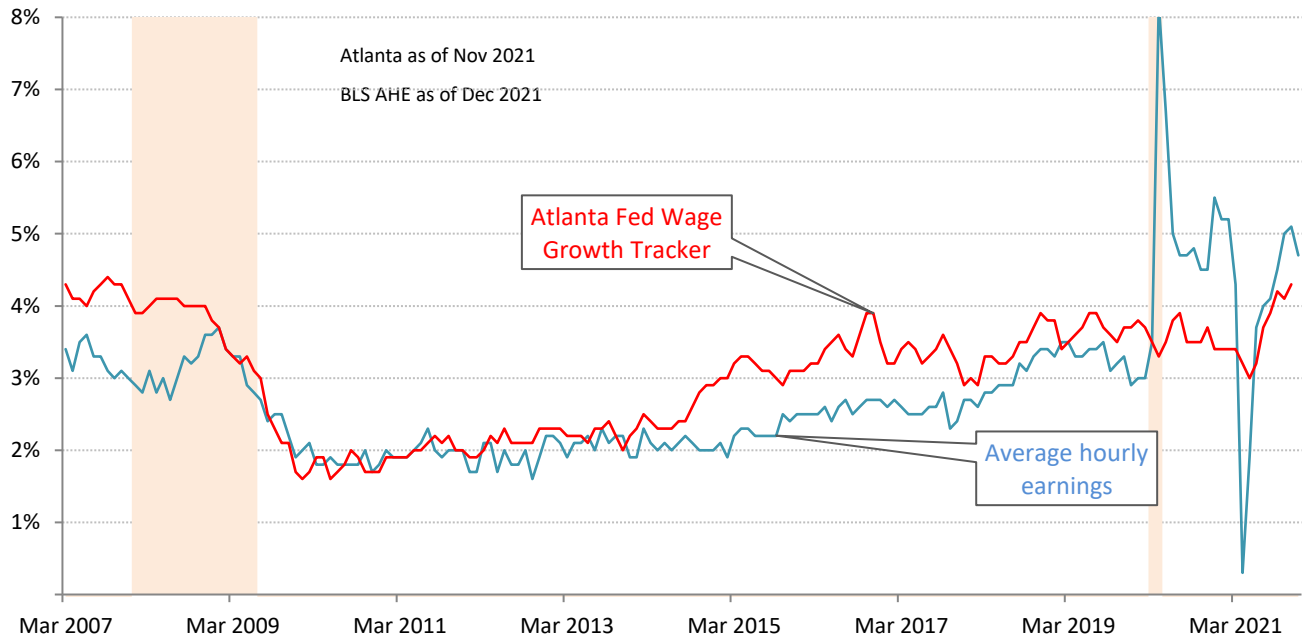
Vertical: Hourly wages vs average Horizontal: Payrolls change this month Circle size: Share of all employment



Source: BLS, TrendMacro calculations

Solving the wage-growth puzzle

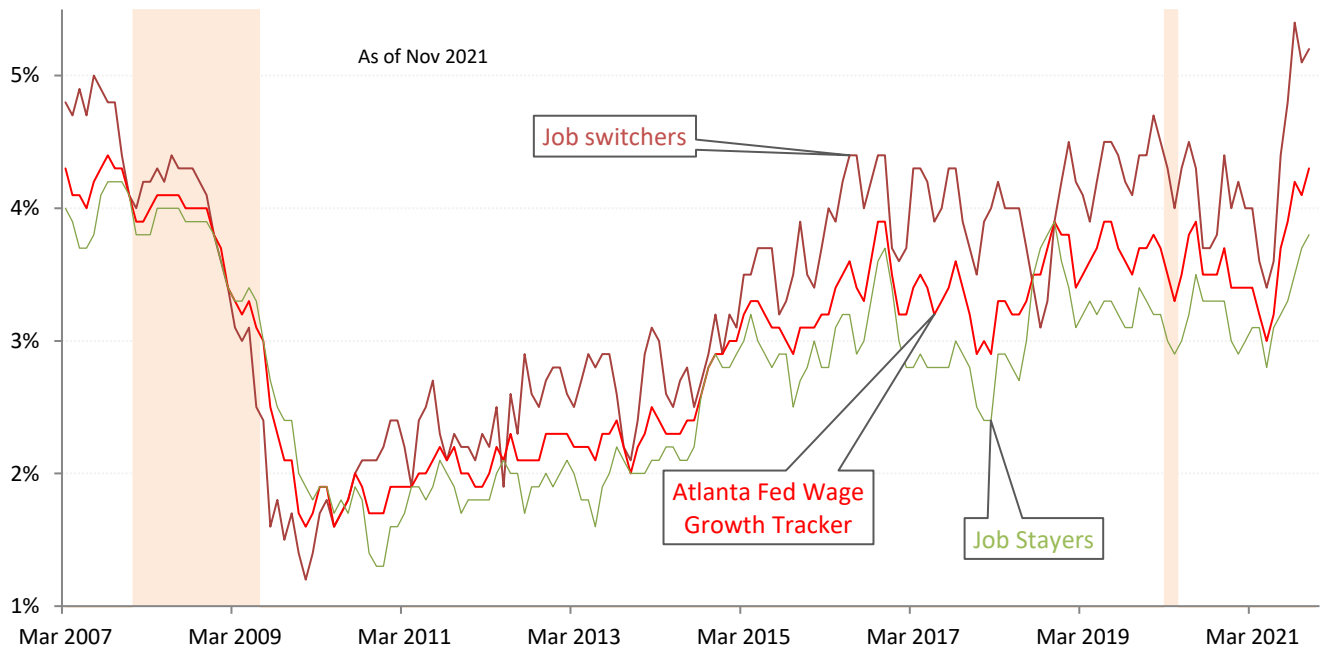
YOY average hourly earnings growth Atlanta Fed Wage Growth Index Recession



Source: BLS Current Employment Statistics, Atlanta Federal Reserve Bank, TrendMacro calculations

The wages of dynamism

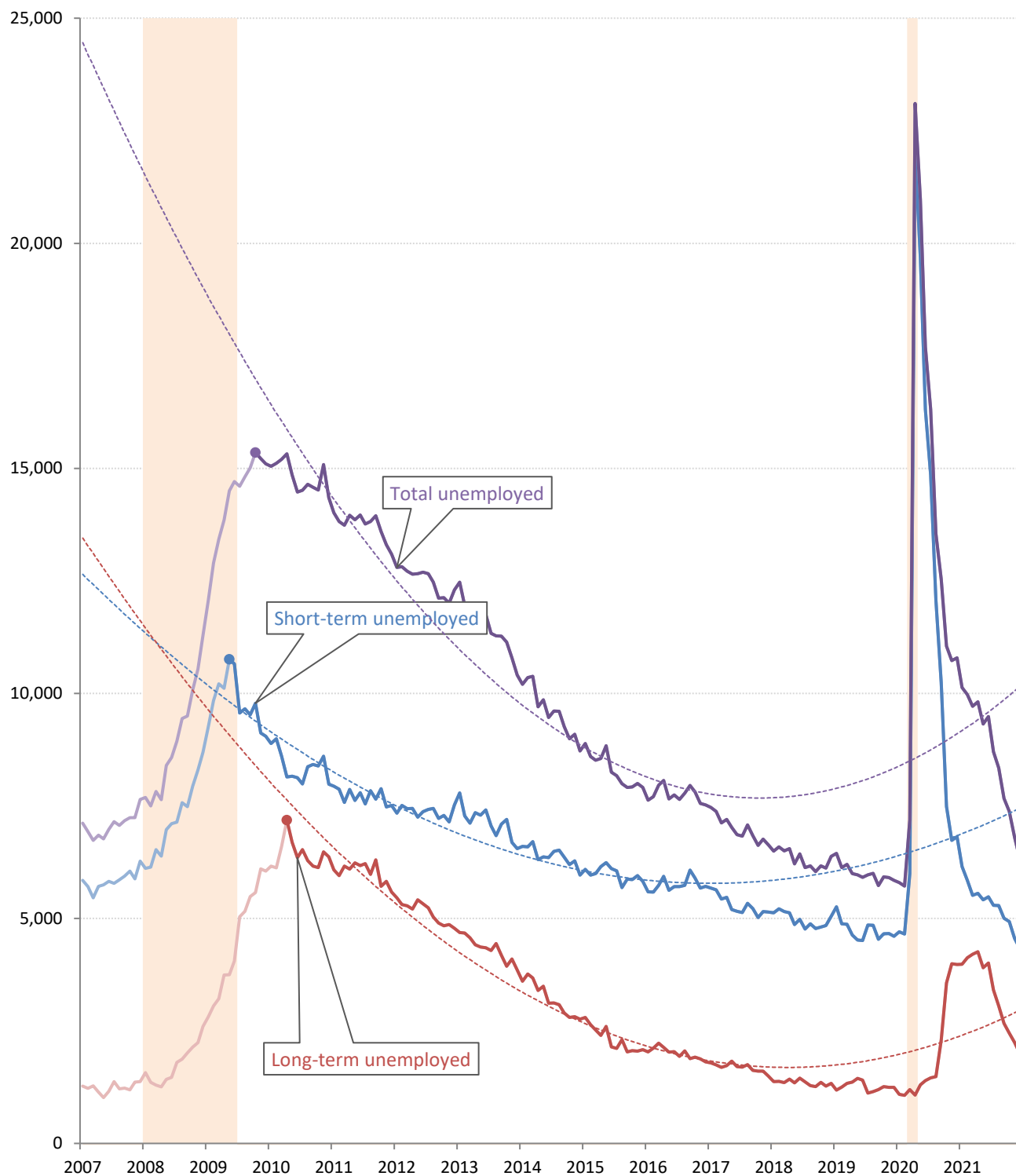
YOY wage growth for steady employees, versus those who change jobs Recession



Source: Atlanta Federal Reserve Bank, TrendMacro calculations

The Great Recession, the jobless recovery, the long boom, and then the virus

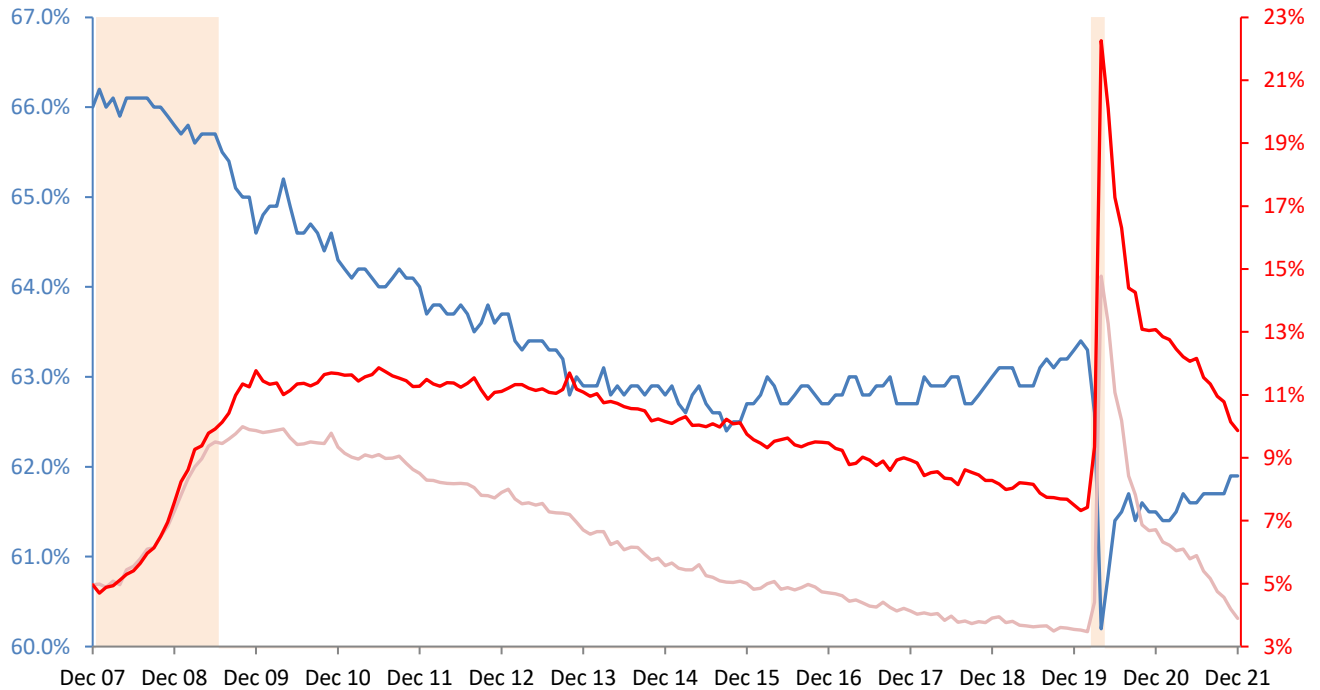
Unemployment: thousands Short-term = <27 weeks Long-term = >27 weeks



Source: BLS Current Population Survey, TrendMacro calculations

Unemployment rate normalized for participation rate December 2007

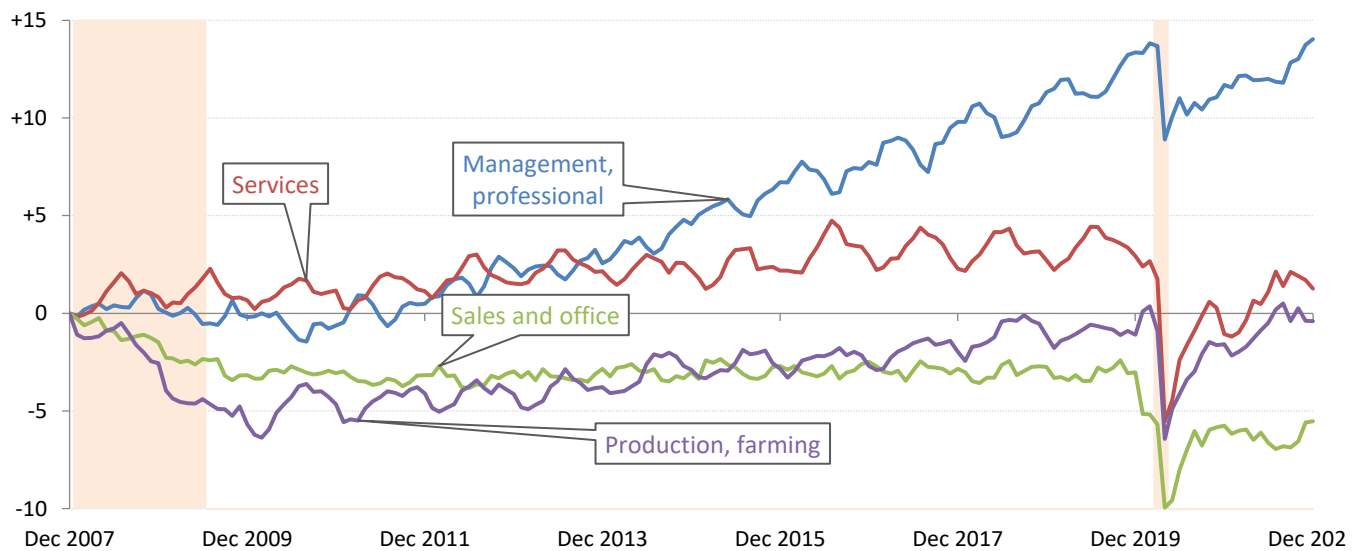
— Participation rate — Headline unemployment rate — Recession



Source: BLS Current Population Survey, TrendMacro calculations

Winner and losers in the long boom and the virus crisis

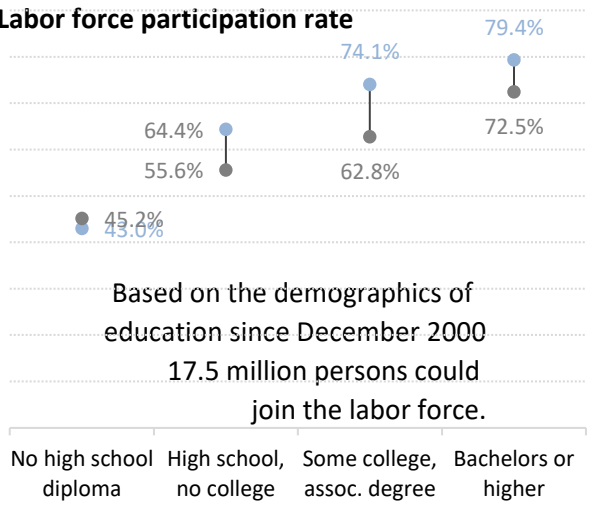
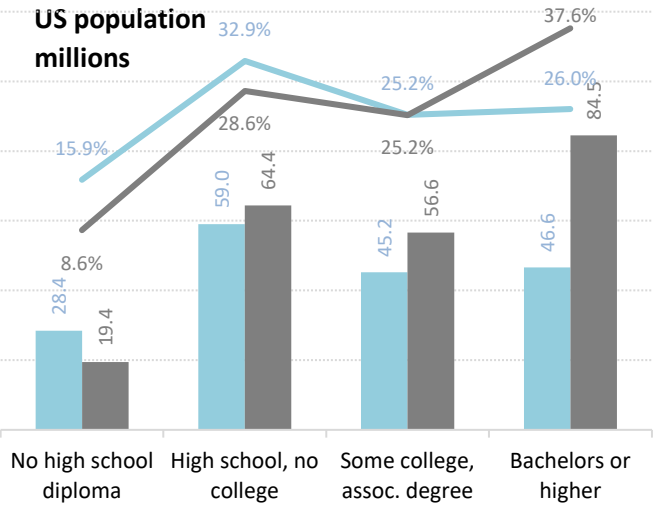
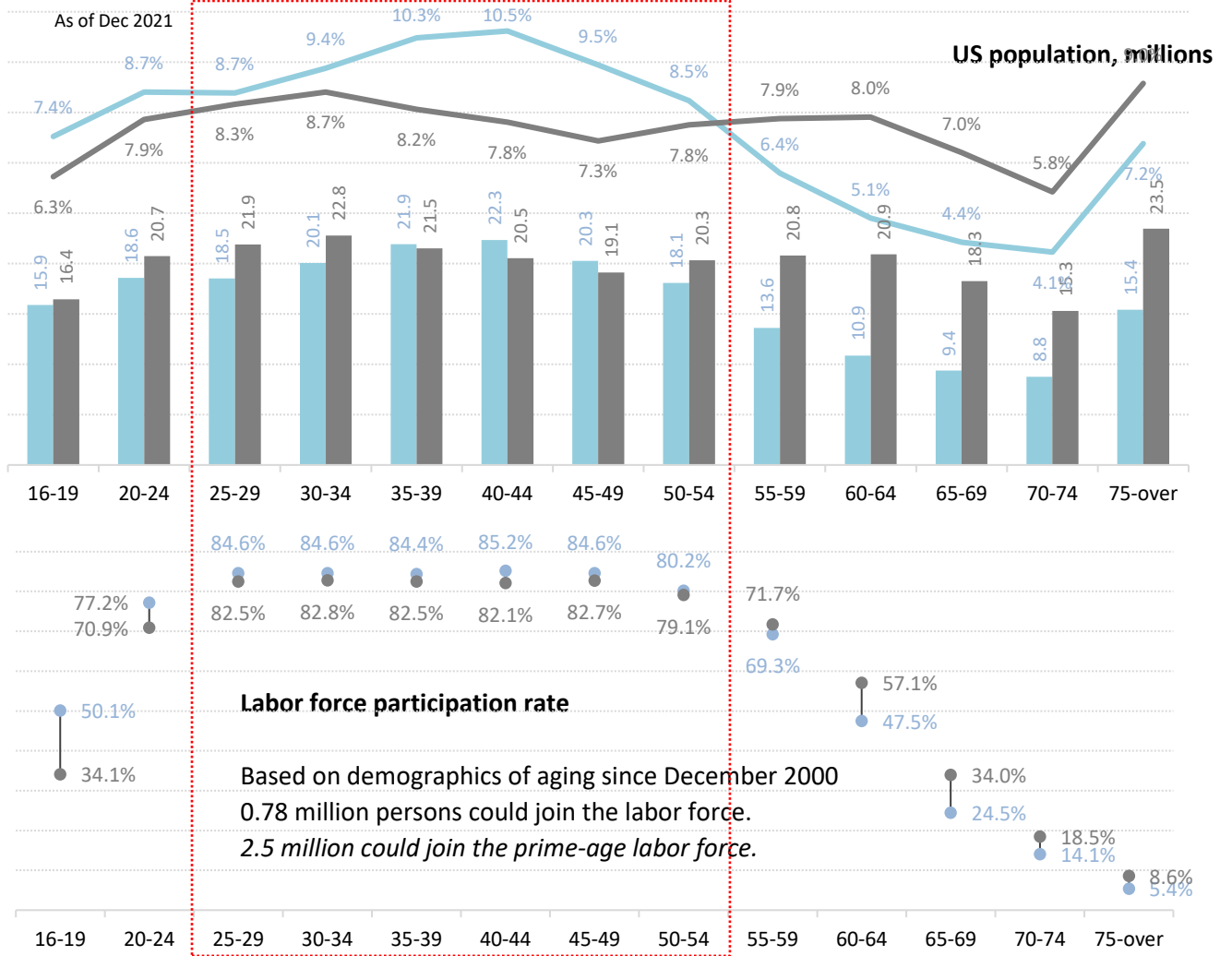
Change in total payrolls from prior business cycle peak, millions



Source: BLS, NBER, TrendMacro calculations

US labor force demographics: fading baby boom and its well-educated echo

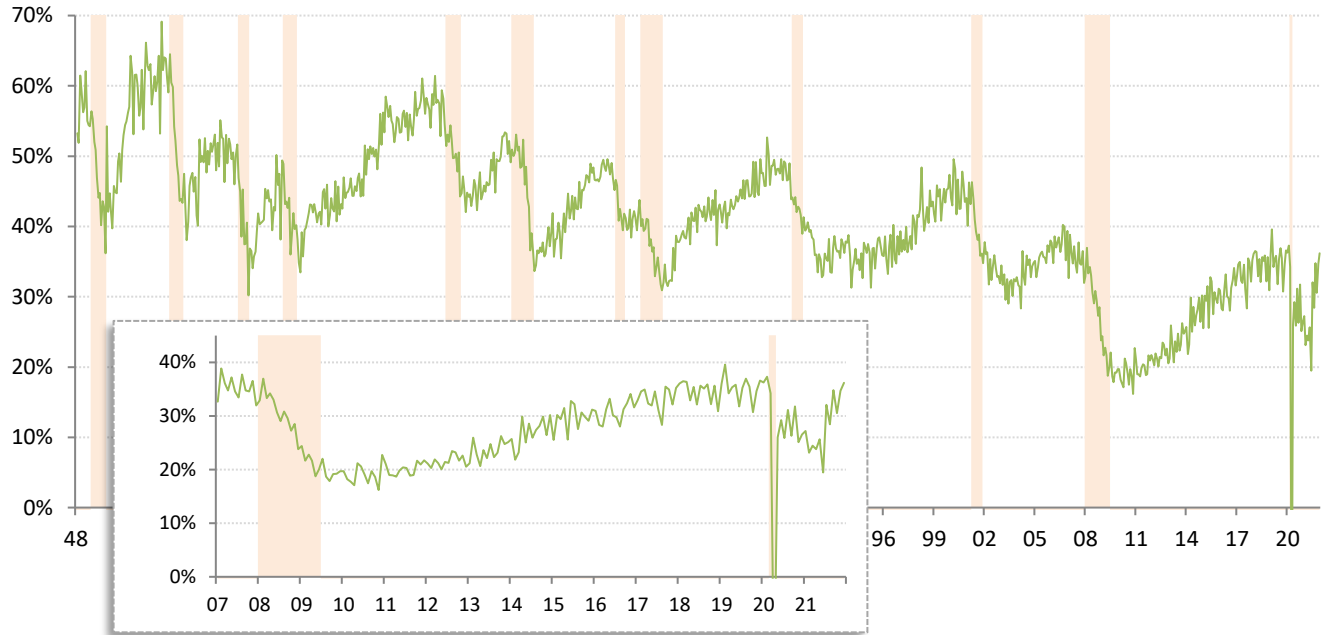
By age and education bracket: ■ Dec 2000, peak in the labor force participation rate ■ Latest □ Prime age



Source: BLS Current Population Survey, TrendMacro calculations

Monthly job-finding probability (the outflow rate from unemployment)

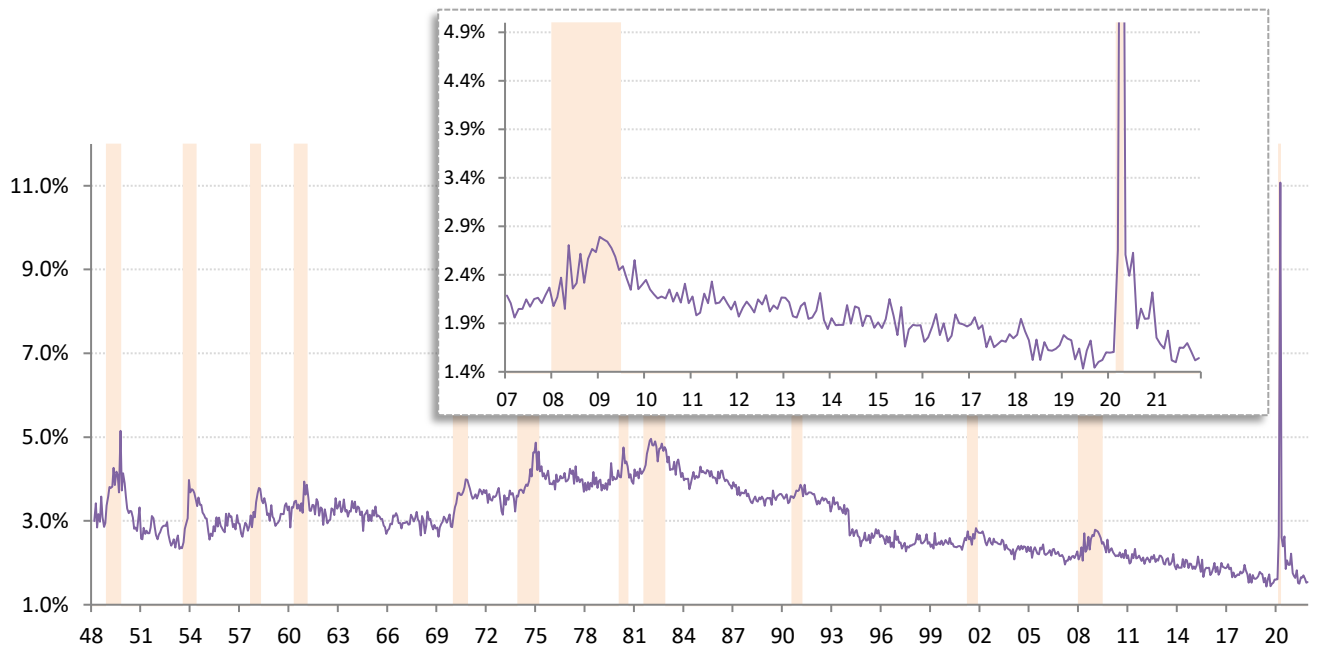
Chance of an unemployed person becoming employed in one month (per [Shimer 2005](#)) Recession



Source: BLS Current Population Survey, TrendMacro calculations

Monthly job-separation probability (the inflow rate to unemployment)

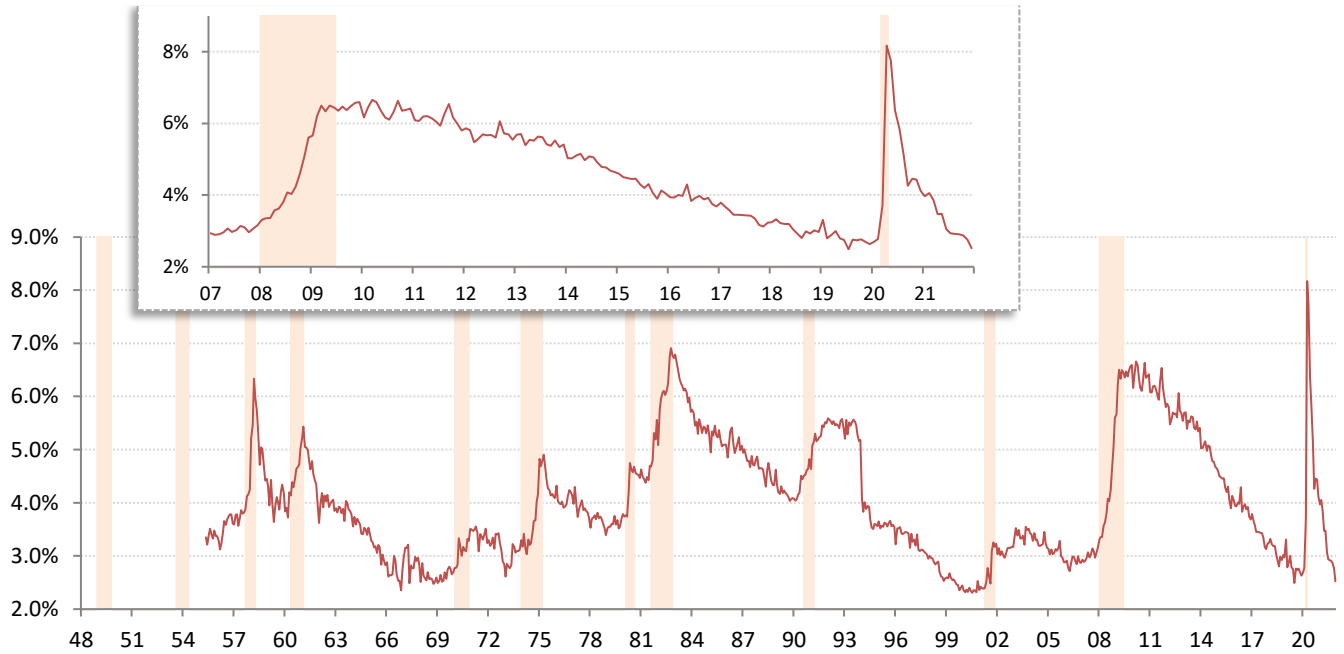
Chance of an employed person becoming unemployed in one month (per [Shimer 2005](#)) Recession



Source: BLS Current Population Survey, TrendMacro calculations

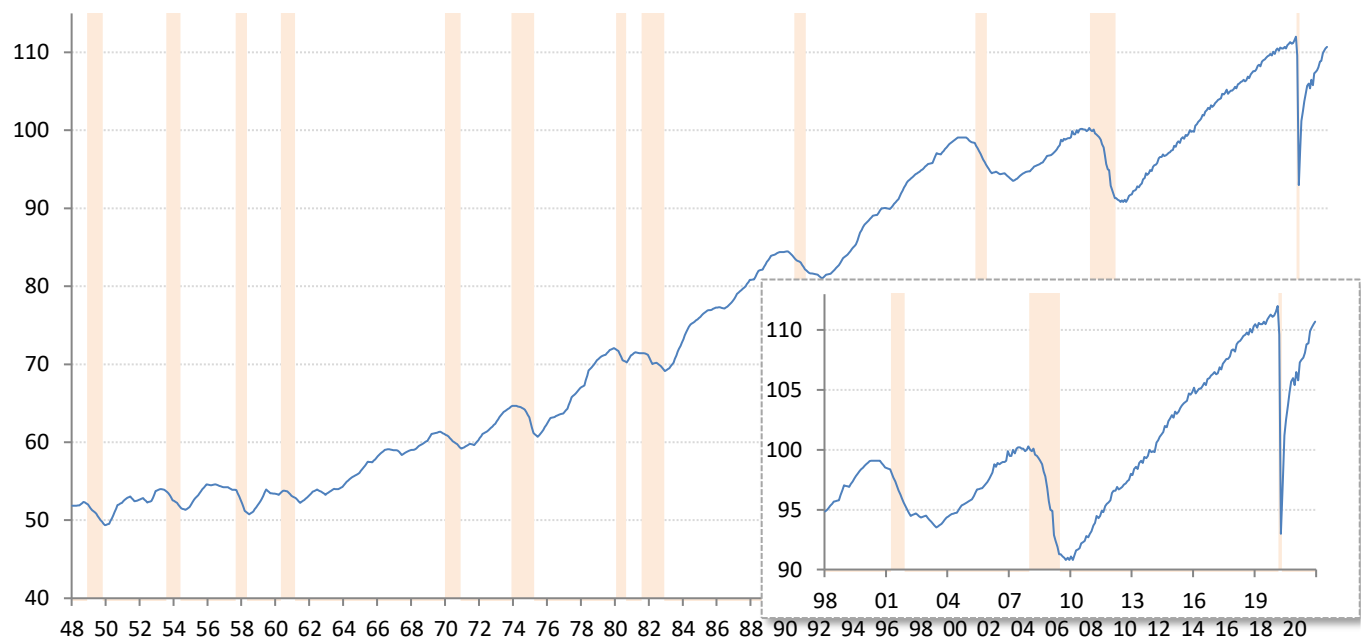
Involuntary part-time workers as percentage of the employed labor force

Persons available for full-time work ■ Recession



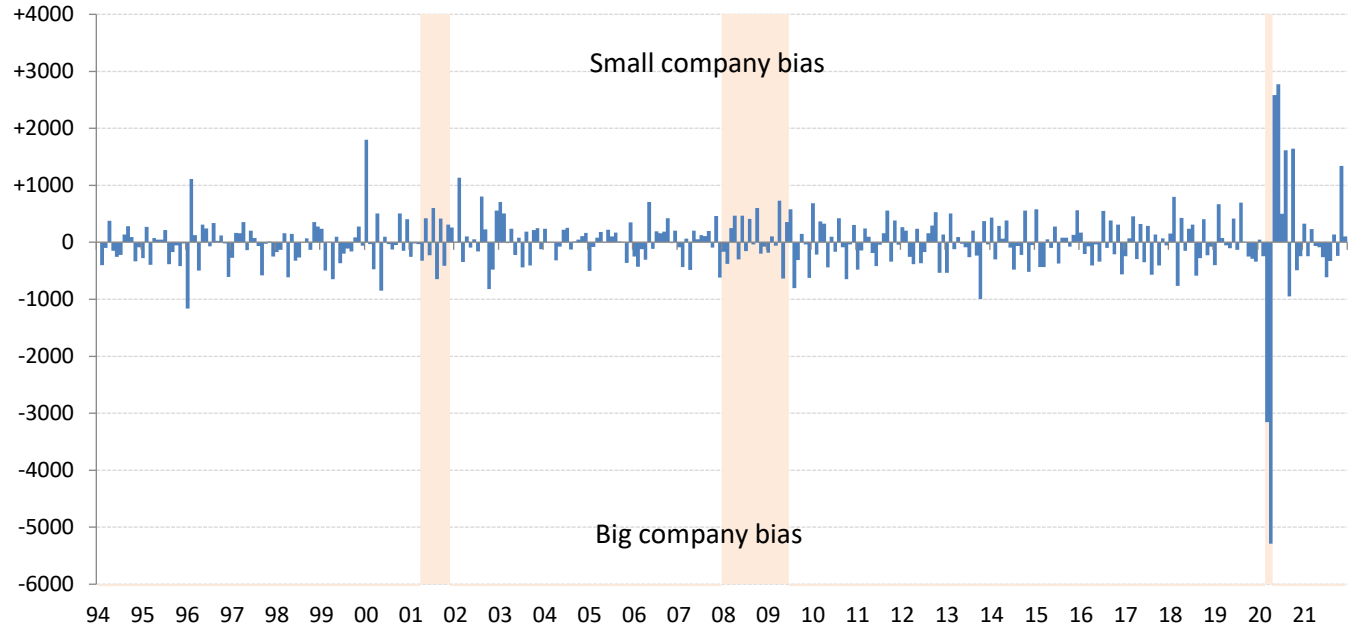
Source: BLS Current Population Survey, TrendMacro calculations

Aggregate weekly private hours-worked index ■ Recession



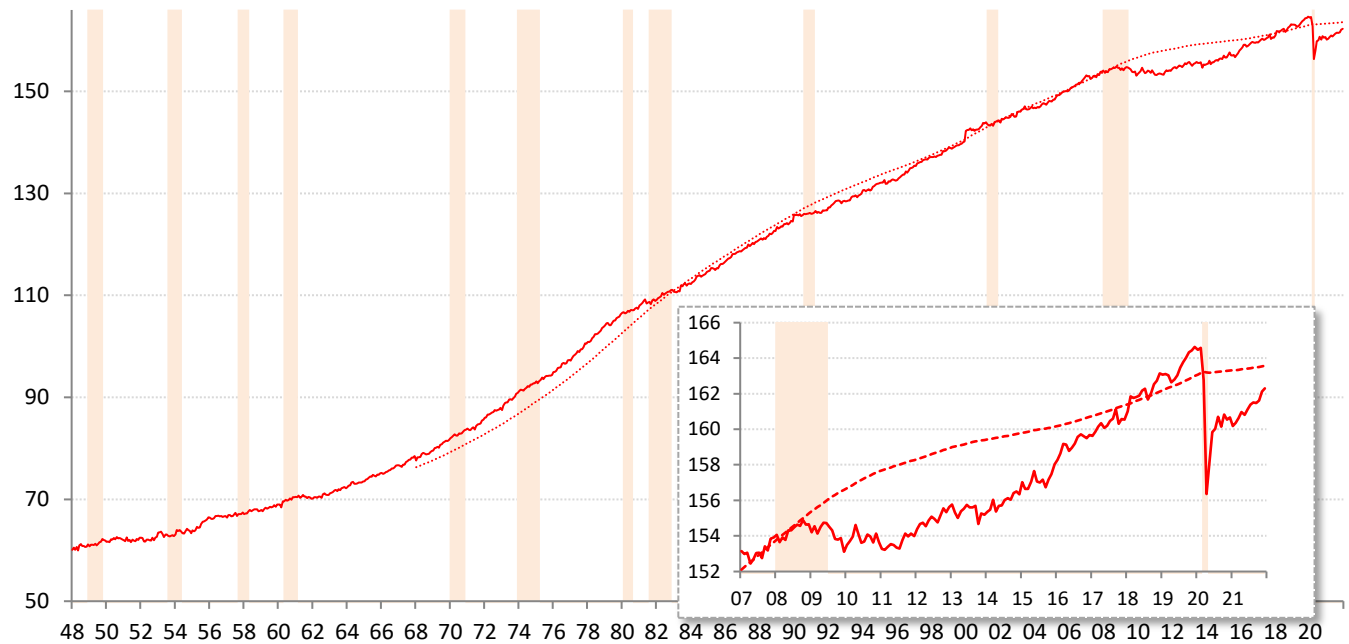
Source: BLS Productivity and Costs (quarterly) and Current Employment Stats (recent monthly), TrendMacro calcs

Difference in employment change: "household" minus "payroll" surveys ■ Recession



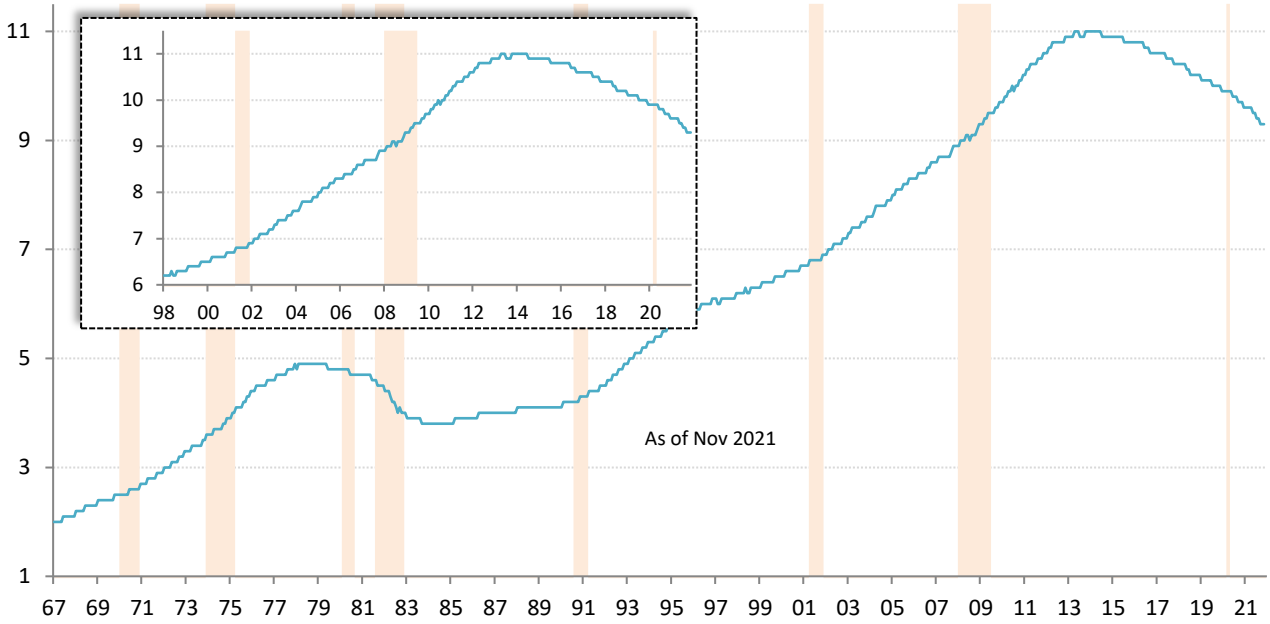
Source: BLS Current Population Survey and Current Employment Statistics, TrendMacro calculations

Civilian labor force versus 20-year trend, millions ■ Recession



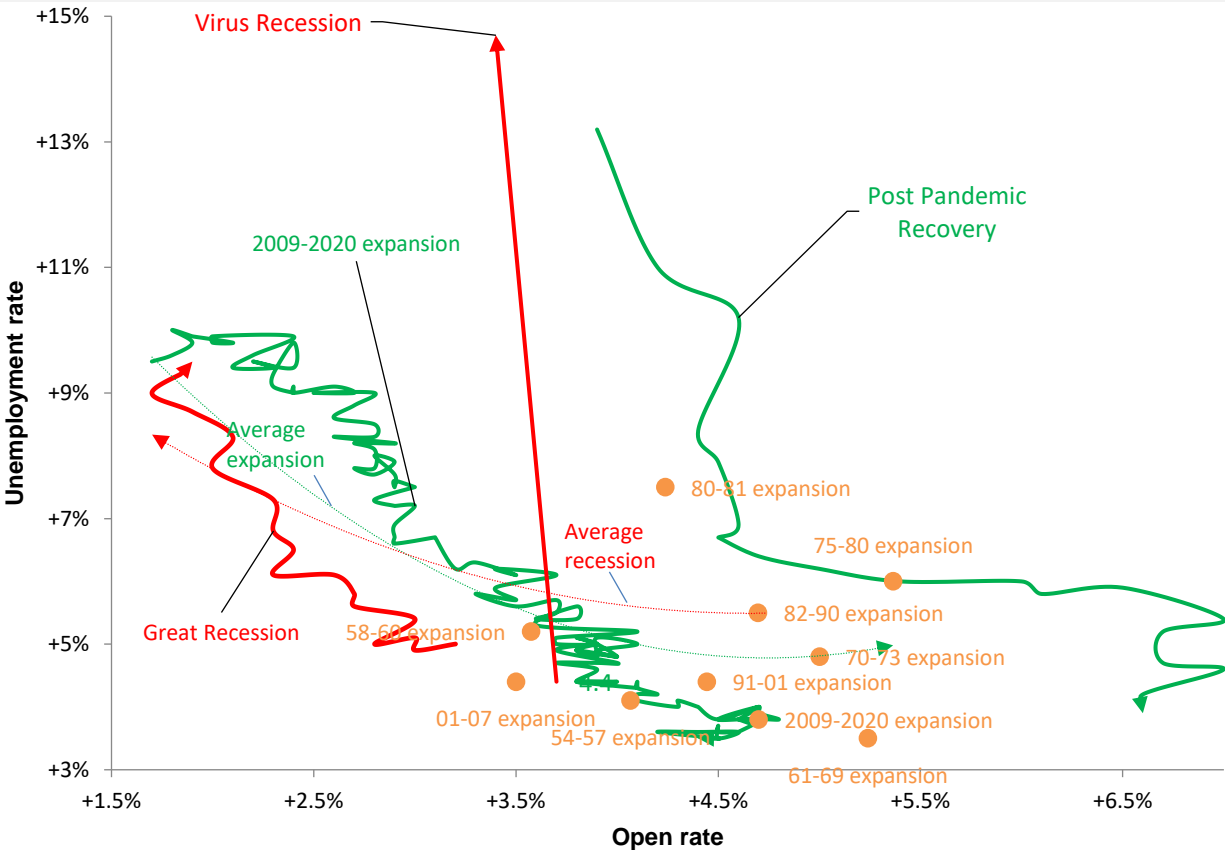
Source: BLS Current Population Survey, TrendMacro calculations

Can the disabled come back to the labor force? Social Security disability recipients, millions



Running out of workers? The Beveridge Curve Cycle relationship between UE and job openings

— Expansion — Recession ● Expansion extreme open rate (and matching UE rate), from 1954 to present



Source: BLS Current Population Survey & JOLTS. Pre-2000:Conference Board normalized per [Valletta \(2005\)](#), TrendMacro calculations