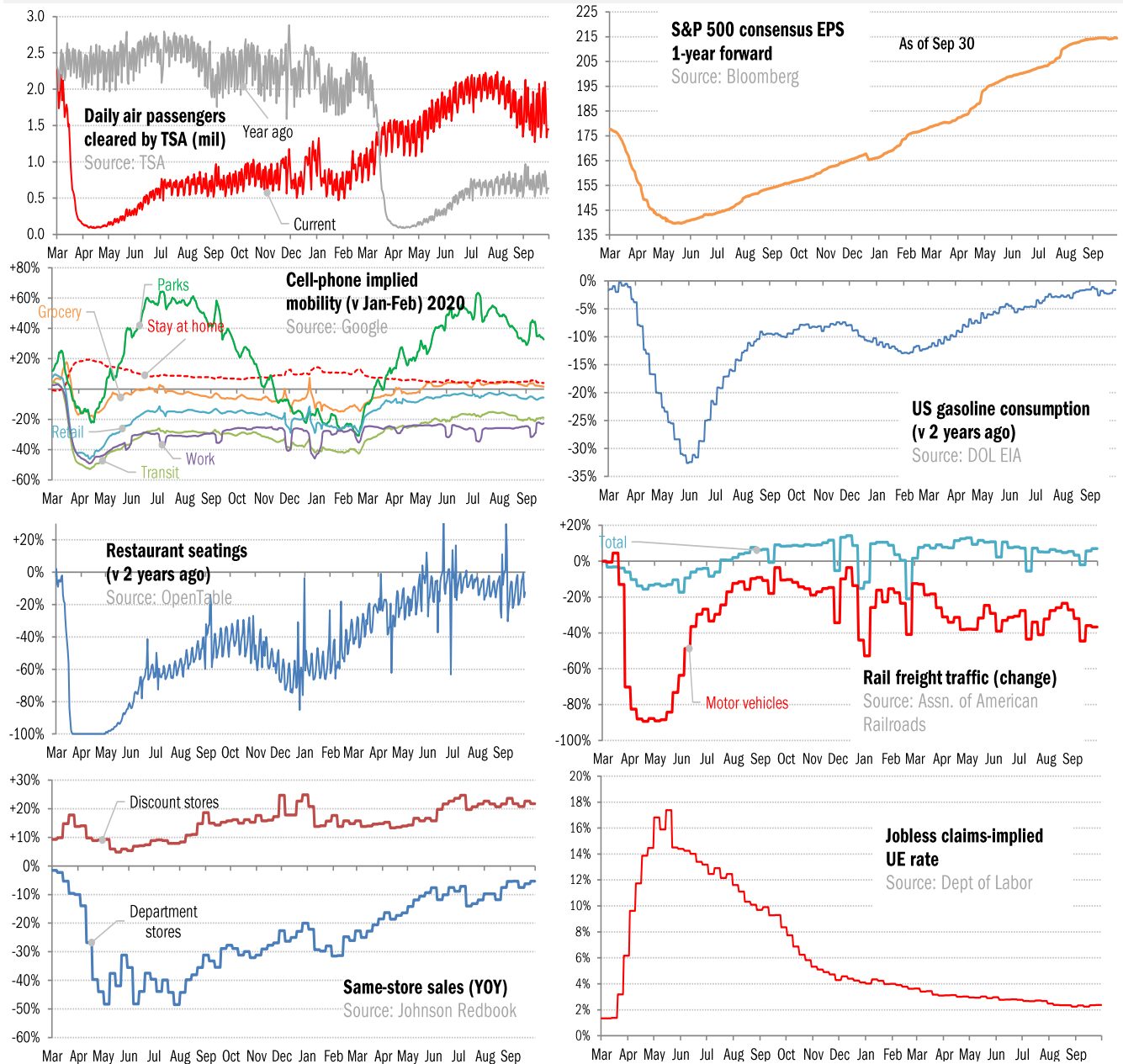


## Data Insights: High-Frequency Post-Virus US Recovery Monitor

Thursday, September 30, 2021

### The US high-frequency macro data dashboard

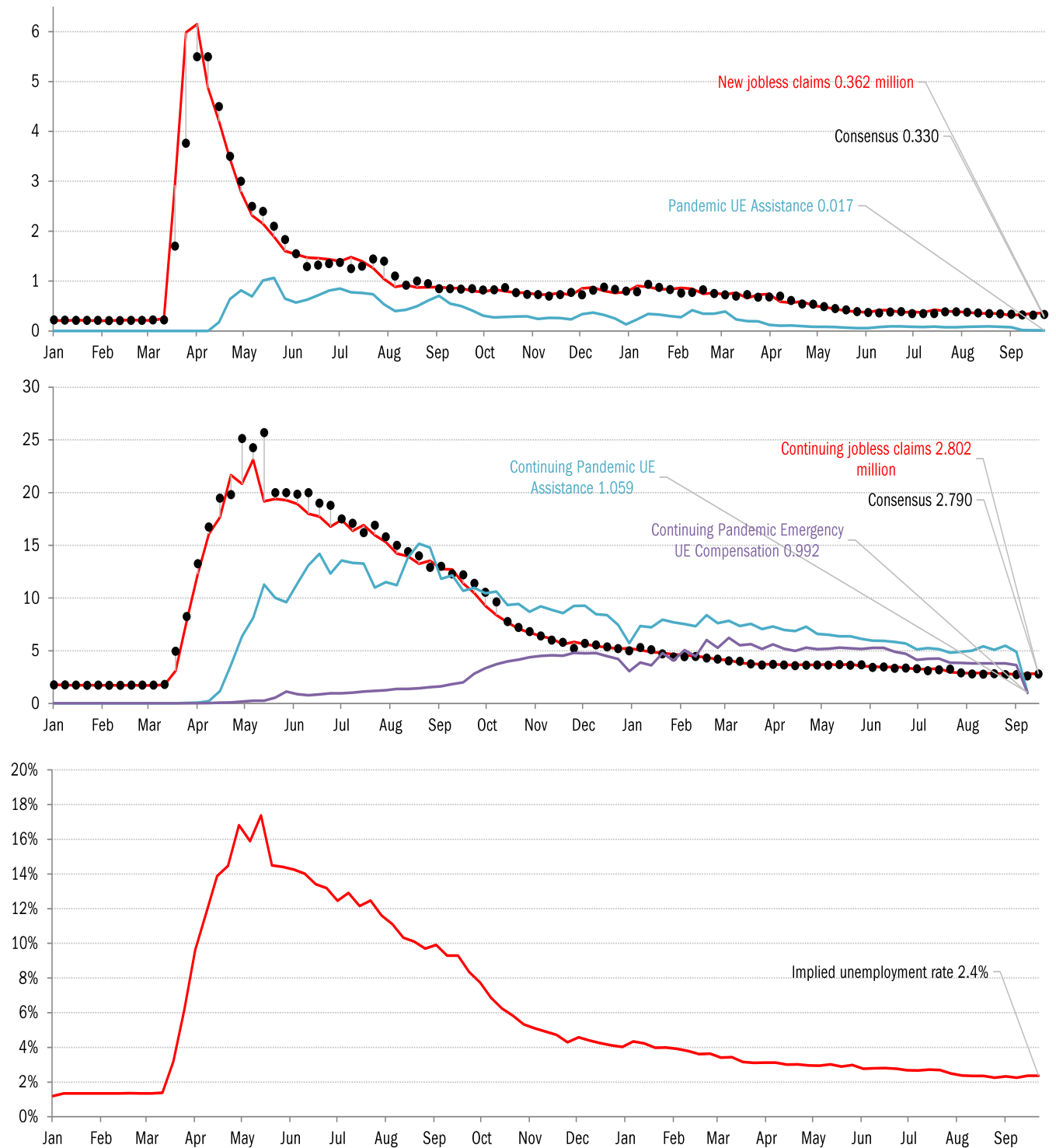
(state level and other detail in subsequent charts)



Source: As indicated, TrendMacro calculations

Copyright 2021 Trend Macrolytics LLC. All rights reserved. This document is not to be forwarded to individuals or organizations not authorized by Trend Macrolytics LLC to receive it. For information purposes only; not to be deemed to be recommendations for buying or selling specific securities or to constitute personalized investment advice. Derived from sources deemed to be reliable, but no warranty is made as to accuracy.

## High-frequency view of the US labor market: weekly unemployment claims (millions)

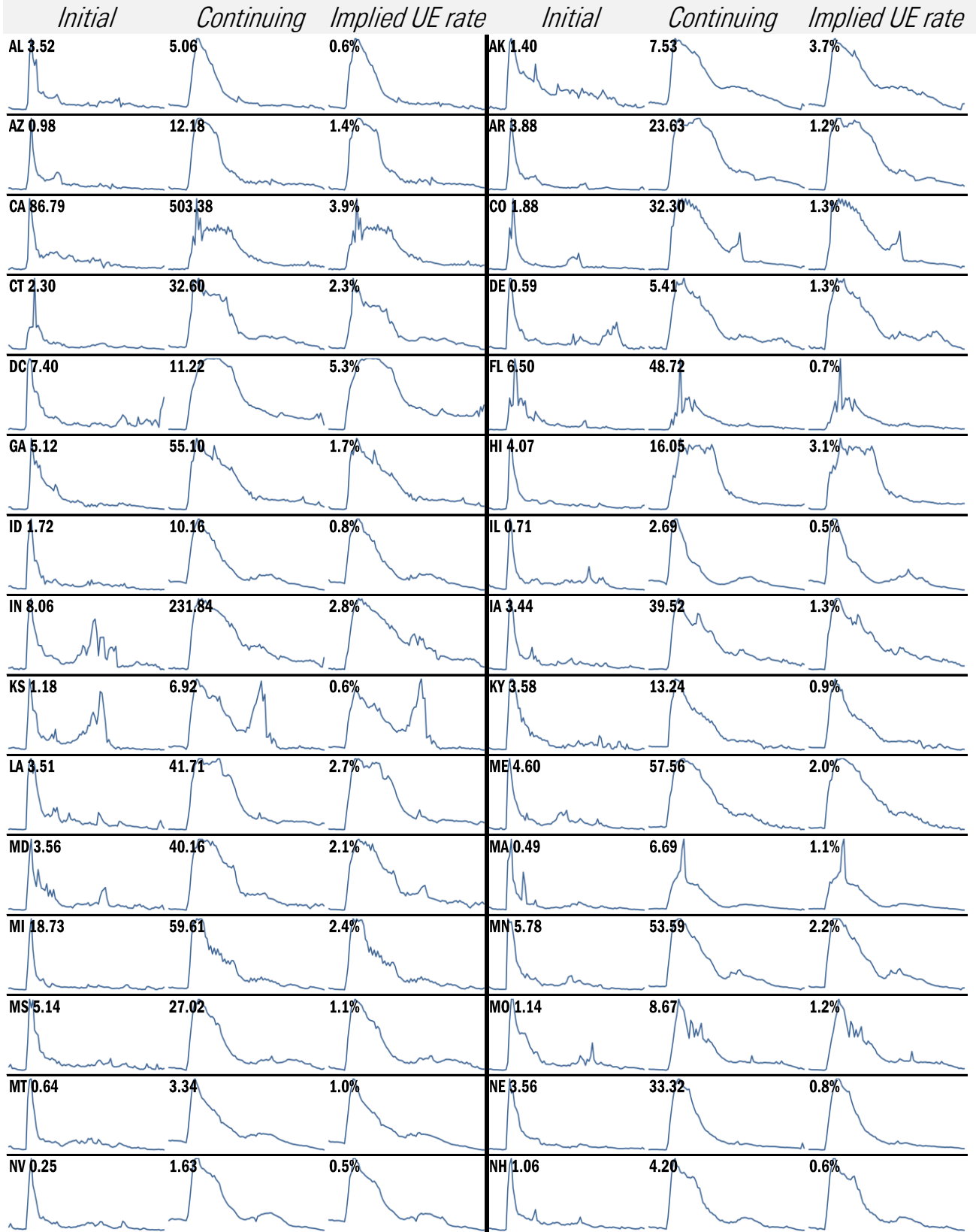


Source: Department of Labor, Bloomberg, TrendMacro calculations

### For more information contact us:

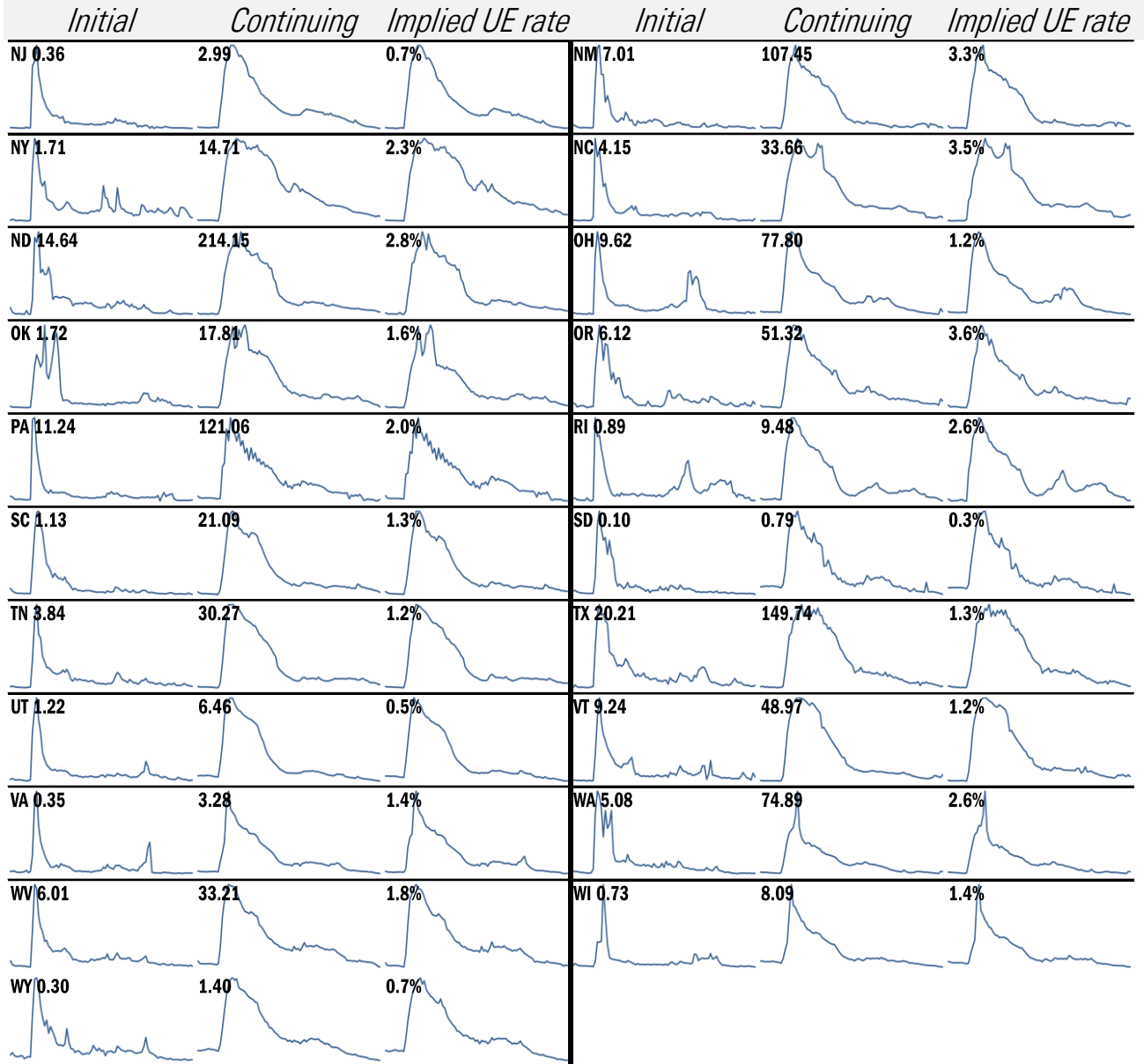
Donald Luskin: 312 273 6766 [don@trendmacro.com](mailto:don@trendmacro.com)  
 Thomas Demas: 704 552 3625 [tdemas@trendmacro.com](mailto:tdemas@trendmacro.com)

# State by state unemployment insurance claims (thousands)



Source: Department of Labor, TrendMacro calculations

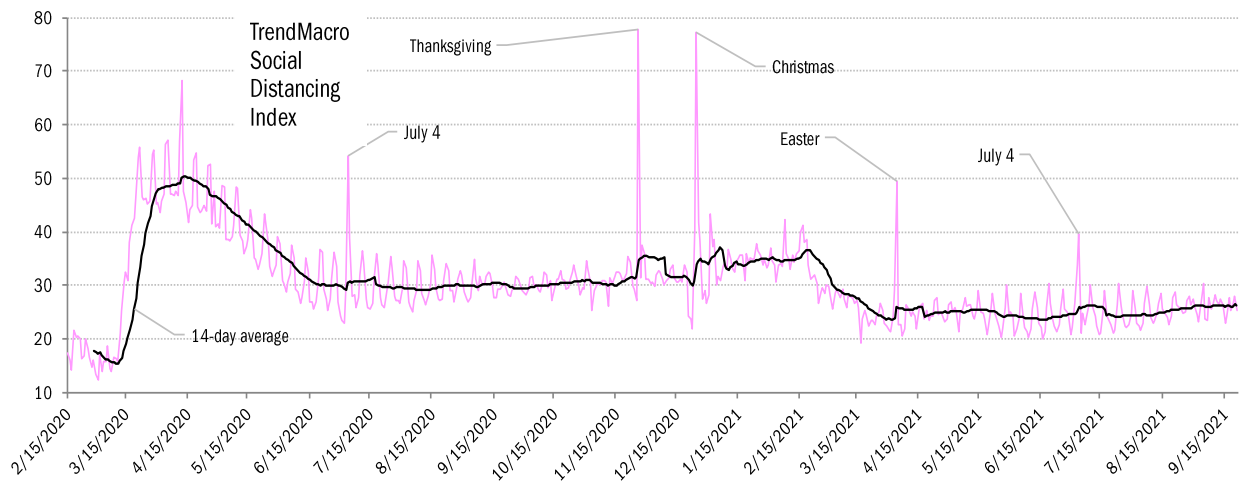
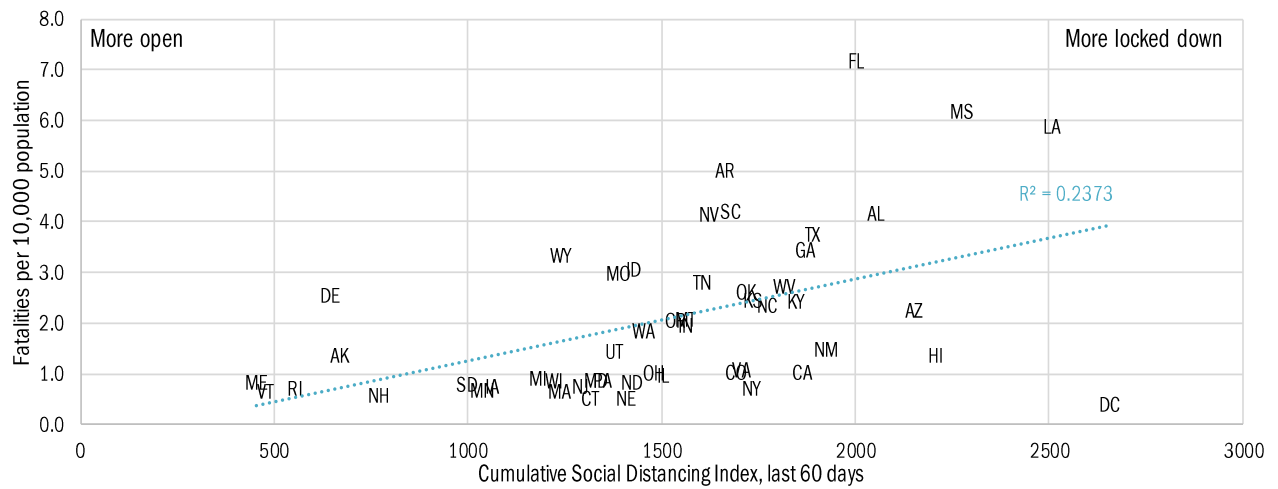
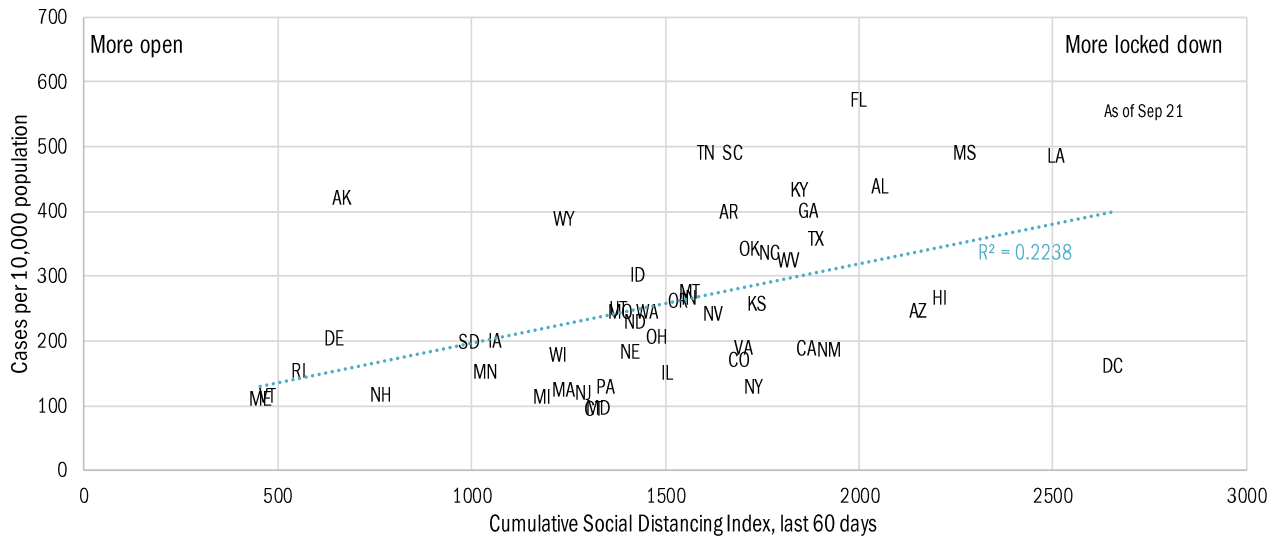
# State by state unemployment insurance claims (thousands)



Source: Department of Labor, TrendMacro calculations

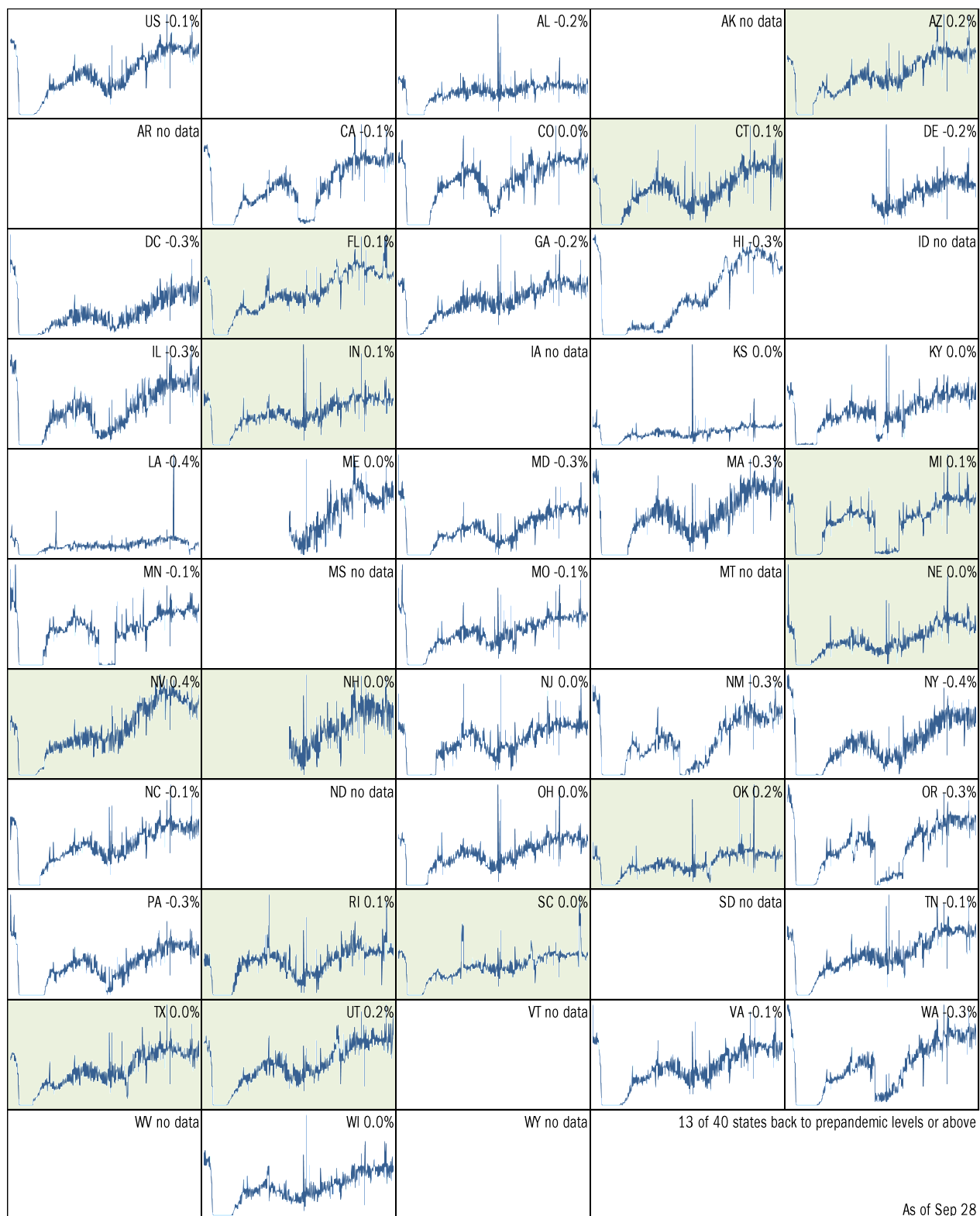
# Re-opening the economy amidst ongoing pandemic risk

## Covid-19 fatalities and cases *vs* social distancing measured by cell-phone mobility data



Source: [Google](#), after [University of Maryland Impact Analysis Platform](#), [Johns Hopkins](#), TrendMacro calcs

Make America eat again:  
 Seated diners in restaurants compared to 2019... Feb 2020 to present ■ Positive



Source: [Open Table](#), TrendMacro calculations

Make America move again: Mobility from Feb 5 vs Jan 3–Feb 6 baseline ■ Positive

	<i>Retail/rec</i>	<i>Grocery/pharm</i>	<i>Parks</i>	<i>Transit stations</i>	<i>Workplaces</i>	<i>Time at home</i>
<b>US -6</b>		<b>1</b>	<b>33</b>	<b>-19</b>	<b>-23</b>	<b>4</b>
<b>AL -7</b>		<b>4</b>	<b>1</b>	<b>0</b>	<b>-16</b>	<b>5</b>
<b>AK +16</b>		<b>14</b>	<b>127</b>	<b>24</b>	<b>-16</b>	<b>3</b>
<b>AZ -12</b>		<b>-5</b>	<b>-23</b>	<b>-14</b>	<b>-24</b>	<b>5</b>
<b>AR +2</b>		<b>6</b>	<b>67</b>	<b>15</b>	<b>-16</b>	<b>3</b>
<b>CA -15</b>		<b>-6</b>	<b>0</b>	<b>-33</b>	<b>-28</b>	<b>6</b>
<b>CO -5</b>		<b>4</b>	<b>63</b>	<b>-11</b>	<b>-24</b>	<b>3</b>
<b>CT 0</b>		<b>2</b>	<b>76</b>	<b>-10</b>	<b>-22</b>	<b>3</b>
<b>DE +5</b>		<b>9</b>	<b>49</b>	<b>-21</b>	<b>-21</b>	<b>4</b>
<b>DC -31</b>		<b>-12</b>	<b>-5</b>	<b>-51</b>	<b>-39</b>	<b>9</b>
<b>FL -15</b>		<b>-6</b>	<b>-23</b>	<b>-28</b>	<b>-23</b>	<b>5</b>
<b>GA -9</b>		<b>0</b>	<b>5</b>	<b>-12</b>	<b>-23</b>	<b>6</b>
<b>HI -24</b>		<b>-11</b>	<b>-25</b>	<b>-34</b>	<b>-28</b>	<b>8</b>
<b>ID +6</b>		<b>14</b>	<b>120</b>	<b>20</b>	<b>-17</b>	<b>2</b>
<b>IL -3</b>		<b>3</b>	<b>84</b>	<b>-13</b>	<b>-23</b>	<b>3</b>

Source: [Google Mobility Reports](https://www.google.com/covid19/mobility/), TrendMacro calculations

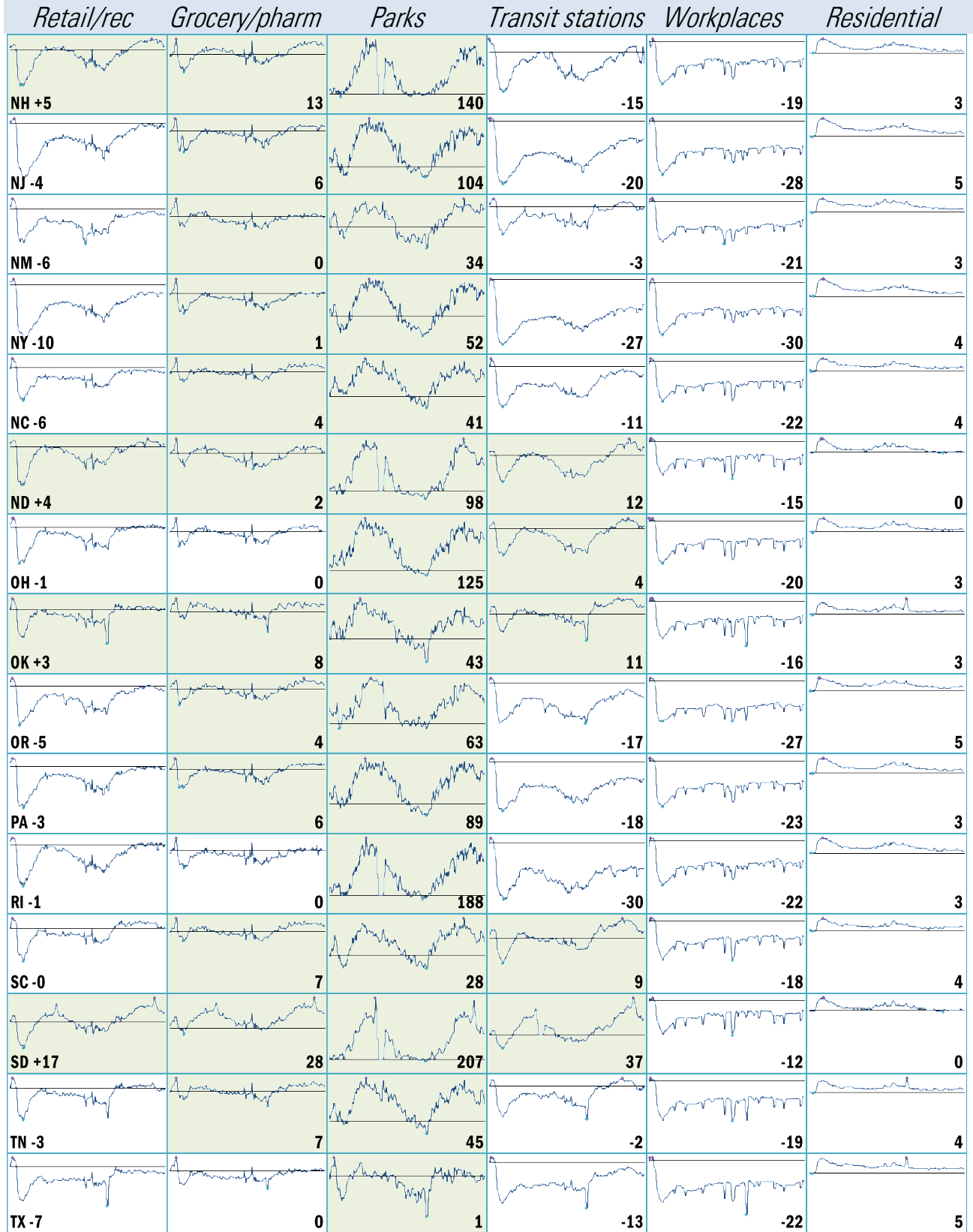
Make America move again: Mobility from Feb 5 vs Jan 3–Feb 6 baseline ■ Positive

	<i>Retail/rec</i>	<i>Grocery/pharm</i>	<i>Parks</i>	<i>Transit stations</i>	<i>Workplaces</i>	<i>Residential</i>
<b>IN +2</b>		<b>-1</b>	<b>113</b>	<b>13</b>	<b>-18</b>	<b>2</b>
<b>IA +10</b>		<b>19</b>	<b>144</b>	<b>11</b>	<b>-15</b>	<b>1</b>
<b>KS +3</b>		<b>7</b>	<b>102</b>	<b>19</b>	<b>-16</b>	<b>1</b>
<b>KY -3</b>		<b>5</b>	<b>78</b>	<b>5</b>	<b>-20</b>	<b>3</b>
<b>LA -10</b>		<b>2</b>	<b>-19</b>	<b>-14</b>	<b>-24</b>	<b>4</b>
<b>ME +21</b>		<b>27</b>	<b>185</b>	<b>31</b>	<b>-17</b>	<b>2</b>
<b>MD -7</b>		<b>1</b>	<b>85</b>	<b>-29</b>	<b>-27</b>	<b>5</b>
<b>MA -5</b>		<b>-2</b>	<b>59</b>	<b>-28</b>	<b>-28</b>	<b>4</b>
<b>MI 0</b>		<b>3</b>	<b>161</b>	<b>-4</b>	<b>-21</b>	<b>3</b>
<b>MN +1</b>		<b>8</b>	<b>95</b>	<b>-13</b>	<b>-22</b>	<b>3</b>
<b>MS -3</b>		<b>2</b>	<b>3</b>	<b>24</b>	<b>-18</b>	<b>4</b>
<b>MO +6</b>		<b>9</b>	<b>84</b>	<b>10</b>	<b>-17</b>	<b>2</b>
<b>MT +16</b>		<b>30</b>	<b>121</b>	<b>45</b>	<b>-15</b>	<b>1</b>
<b>NE +6</b>		<b>6</b>	<b>98</b>	<b>20</b>	<b>-15</b>	<b>1</b>
<b>NV -6</b>		<b>0</b>	<b>0</b>	<b>-17</b>	<b>-21</b>	<b>4</b>

Source: [Google Mobility Reports](https://www.google.com/covid19/mobility/), TrendMacro calculations

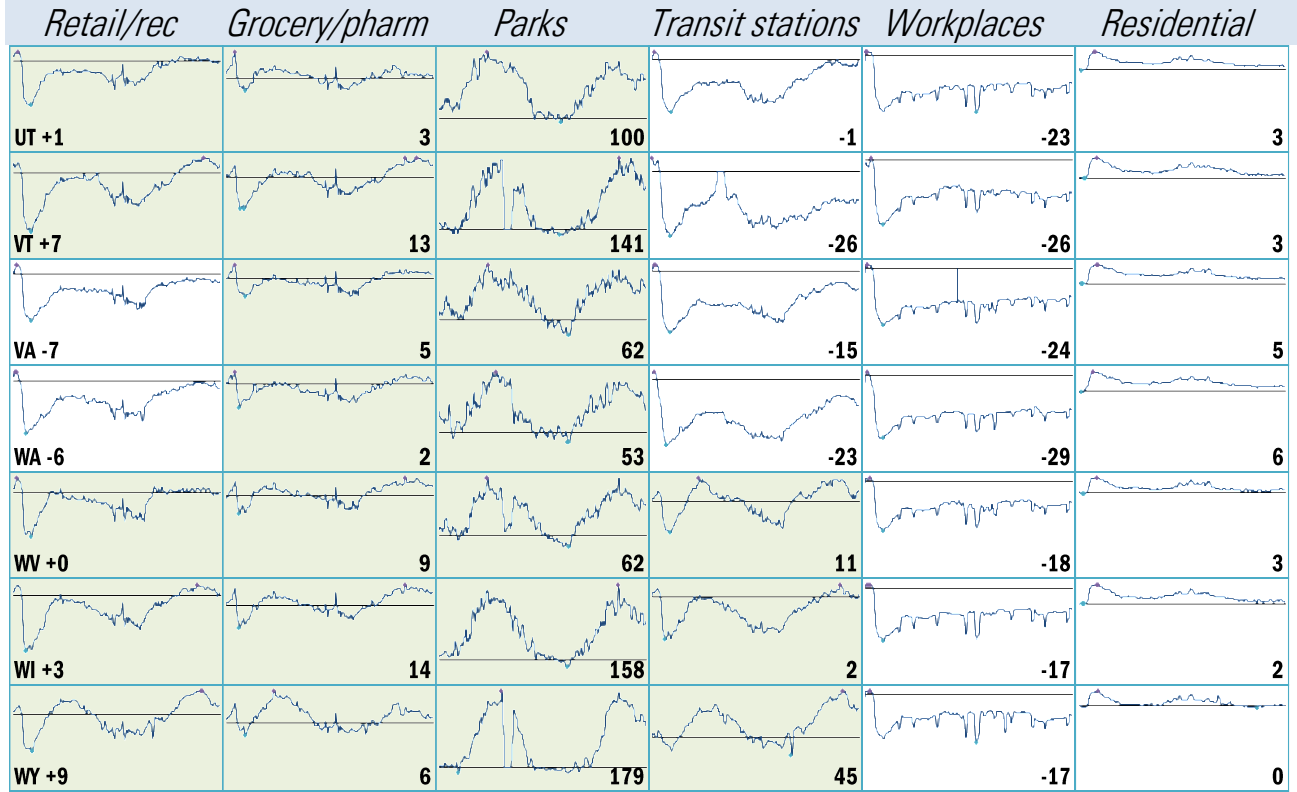


Make America move again: Mobility from Feb 5 vs Jan 3–Feb 6 baseline ■ Positive



Source: [Google Mobility Reports](https://www.google.com/covid19/mobility/), TrendMacro calculations

Make America move again: Mobility from Feb 5 vs Jan 3–Feb 6 baseline ■ Positive



Source: [Google Mobility Reports](https://www.google.com/covid19/mobility/), TrendMacro calculations