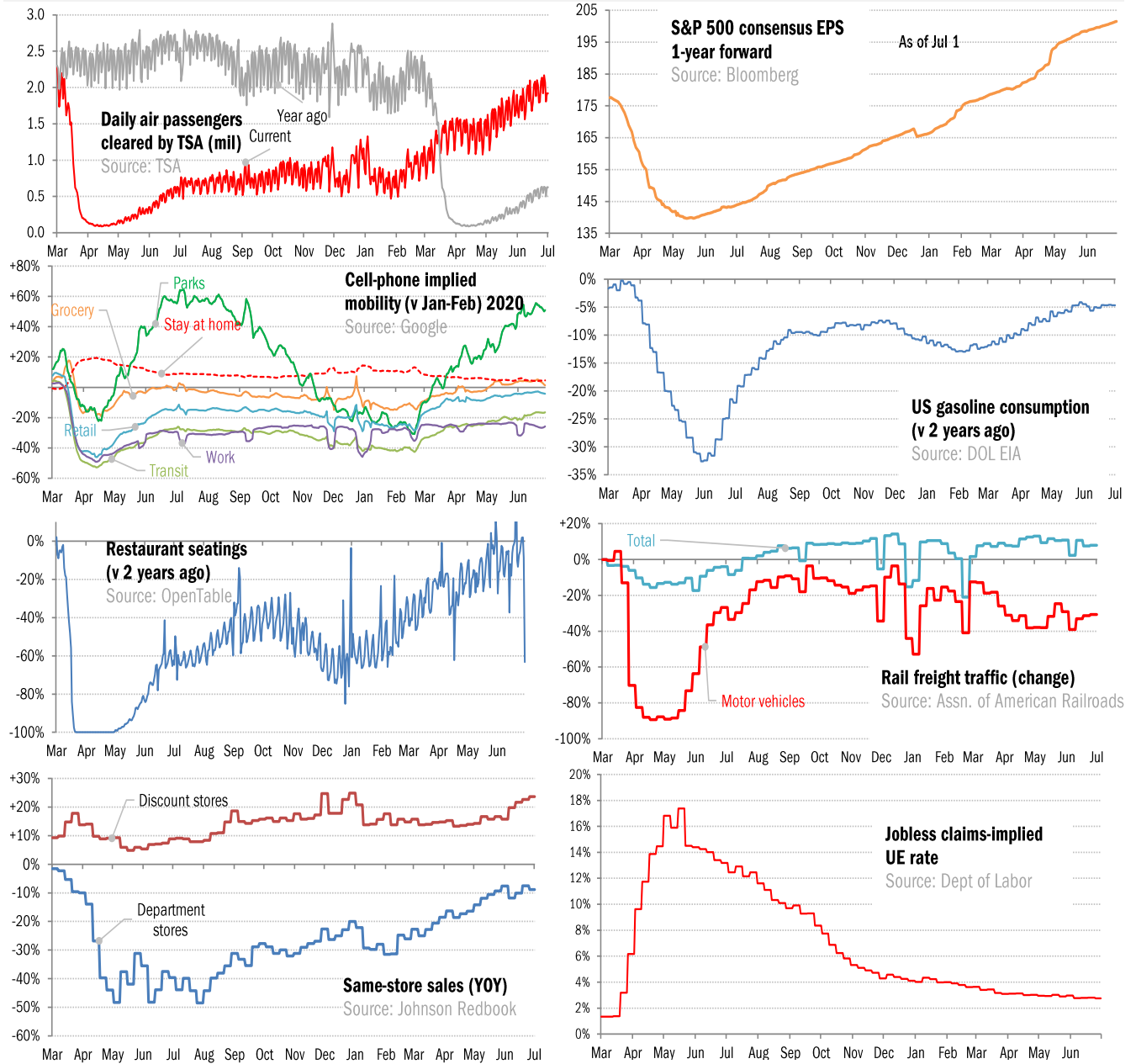


Data Insights: High-Frequency Post-Virus US Recovery Monitor

Thursday, July 1, 2021

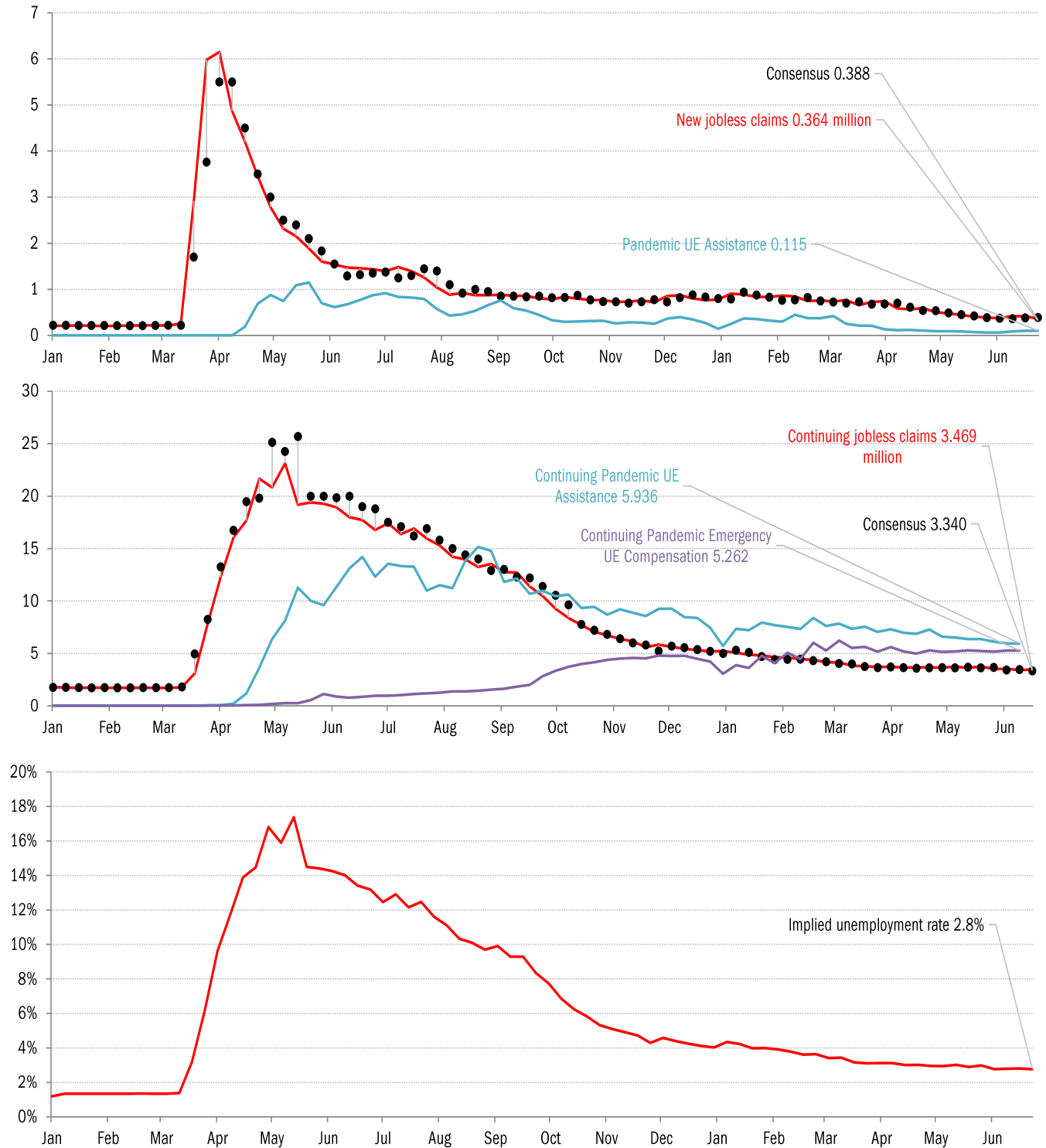
The US high-frequency macro data dashboard

(state level and other detail in subsequent charts)



Source: As indicated, TrendMacro calculations

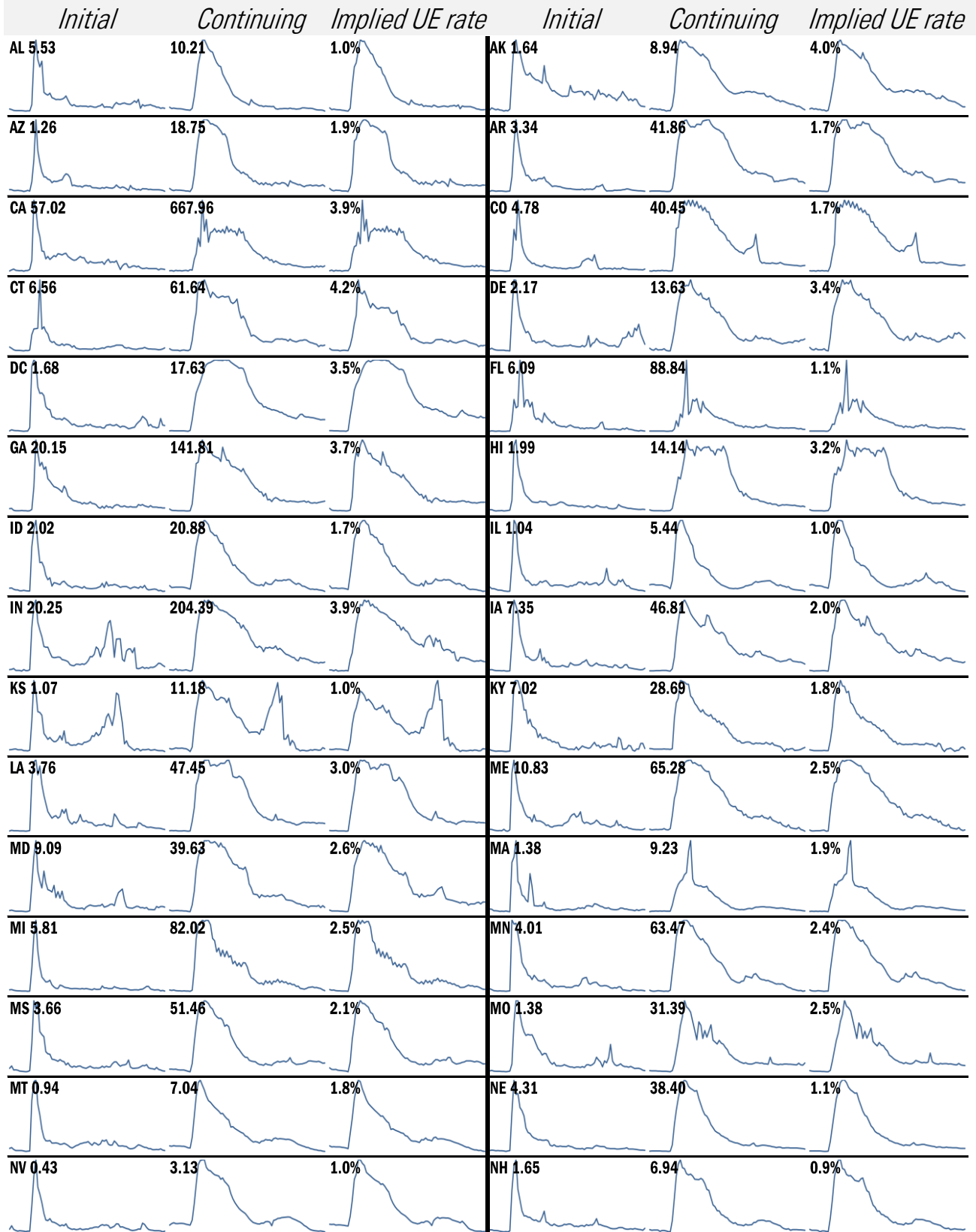
High-frequency view of the US labor market: weekly unemployment claims (millions)



Source: Department of Labor, Bloomberg, TrendMacro calculations

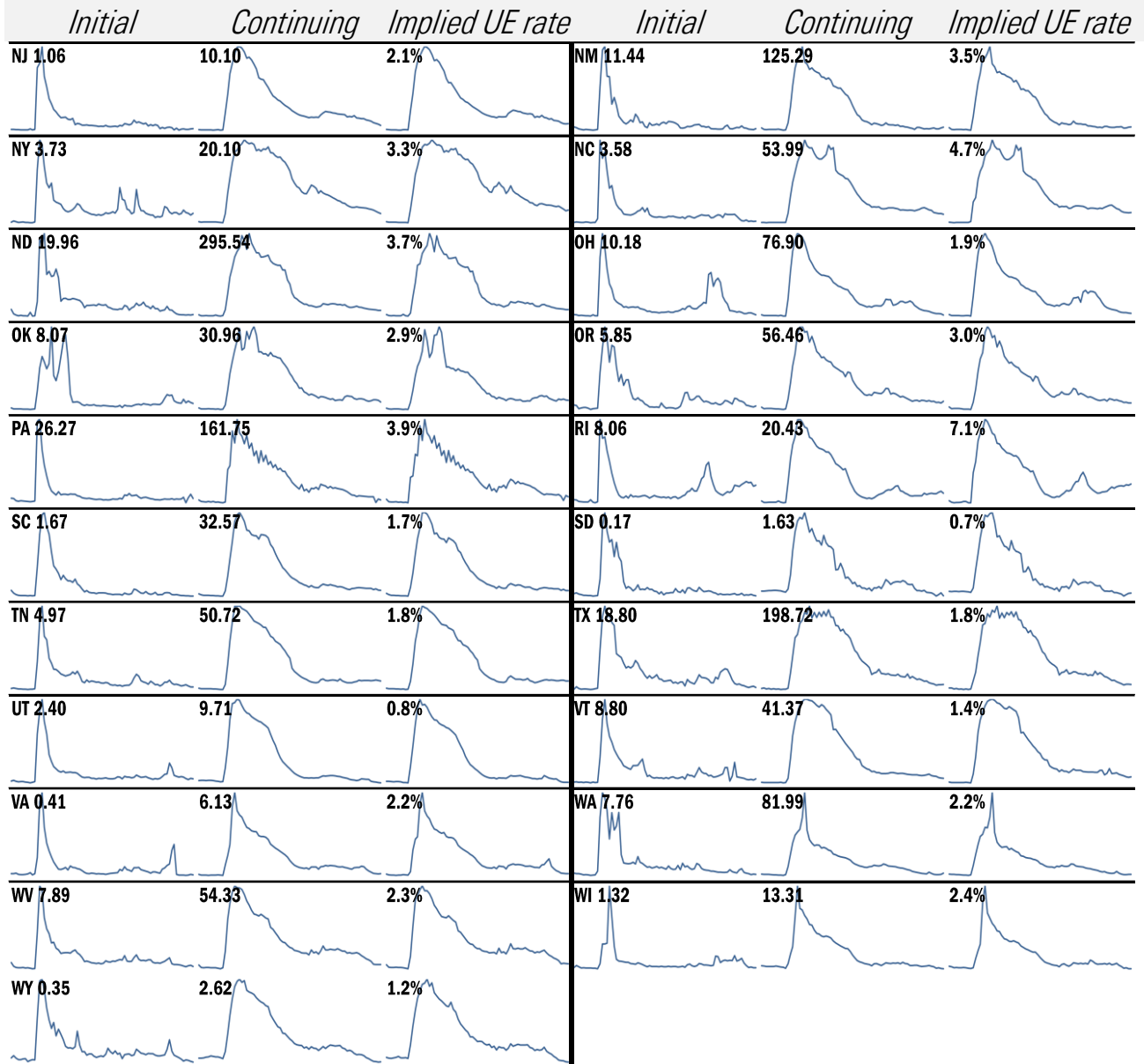
For more information contact us:
 Donald Luskin: 312 273 6766 don@trendmacro.com
 Thomas Demas: 704 552 3625 tdemas@trendmacro.com

State by state unemployment insurance claims (thousands)



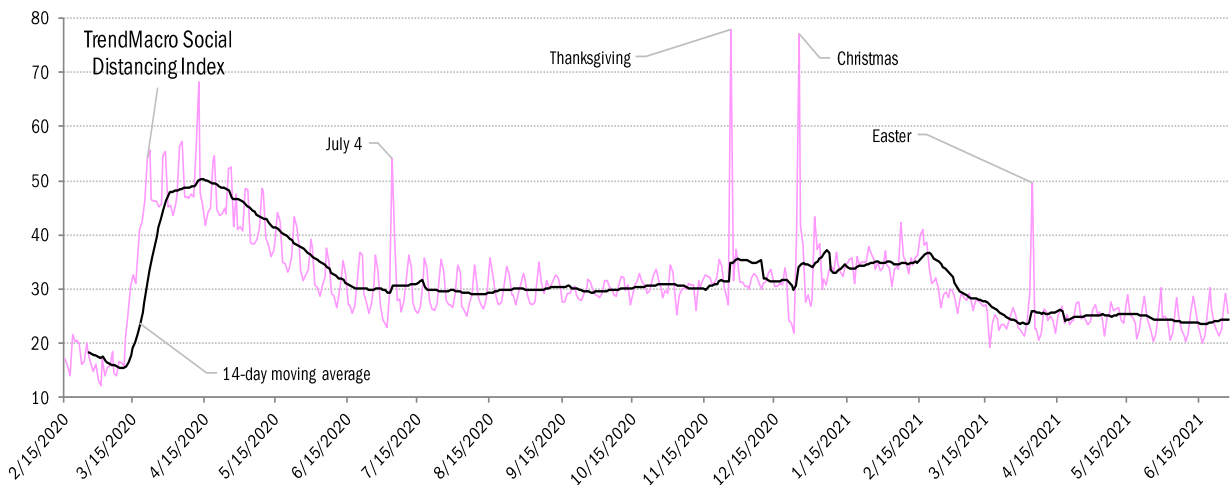
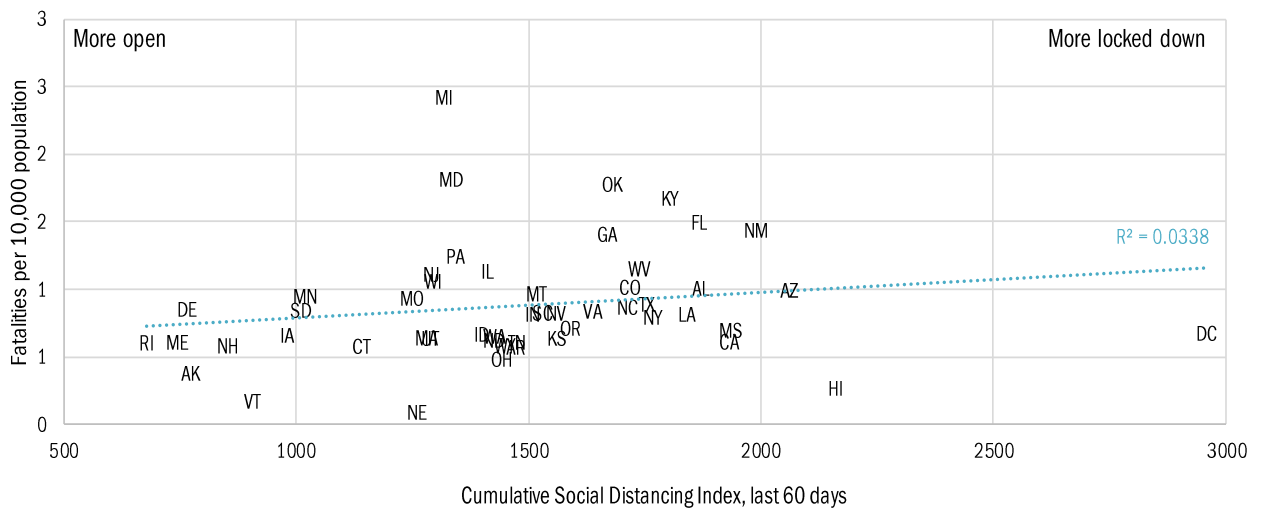
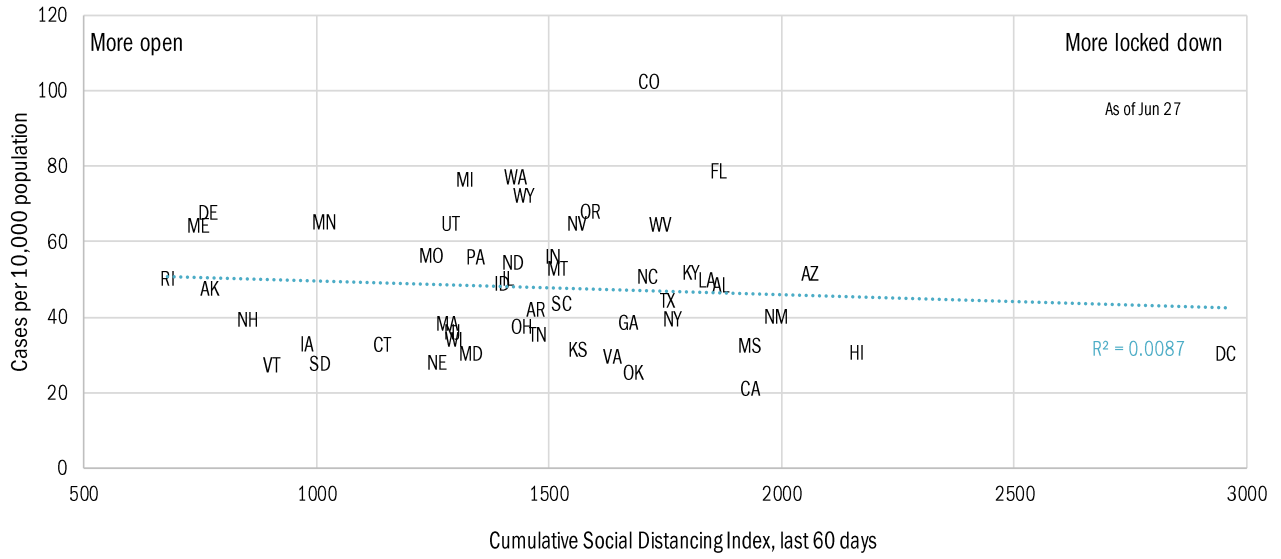
Source: Department of Labor, TrendMacro calculations

State by state unemployment insurance claims (thousands)



Source: Department of Labor, TrendMacro calculations

Opening up in the spring following the “dark winter” lockdowns Covid-2019 fatalities and cases vs social distancing measured by cell-phone mobility data

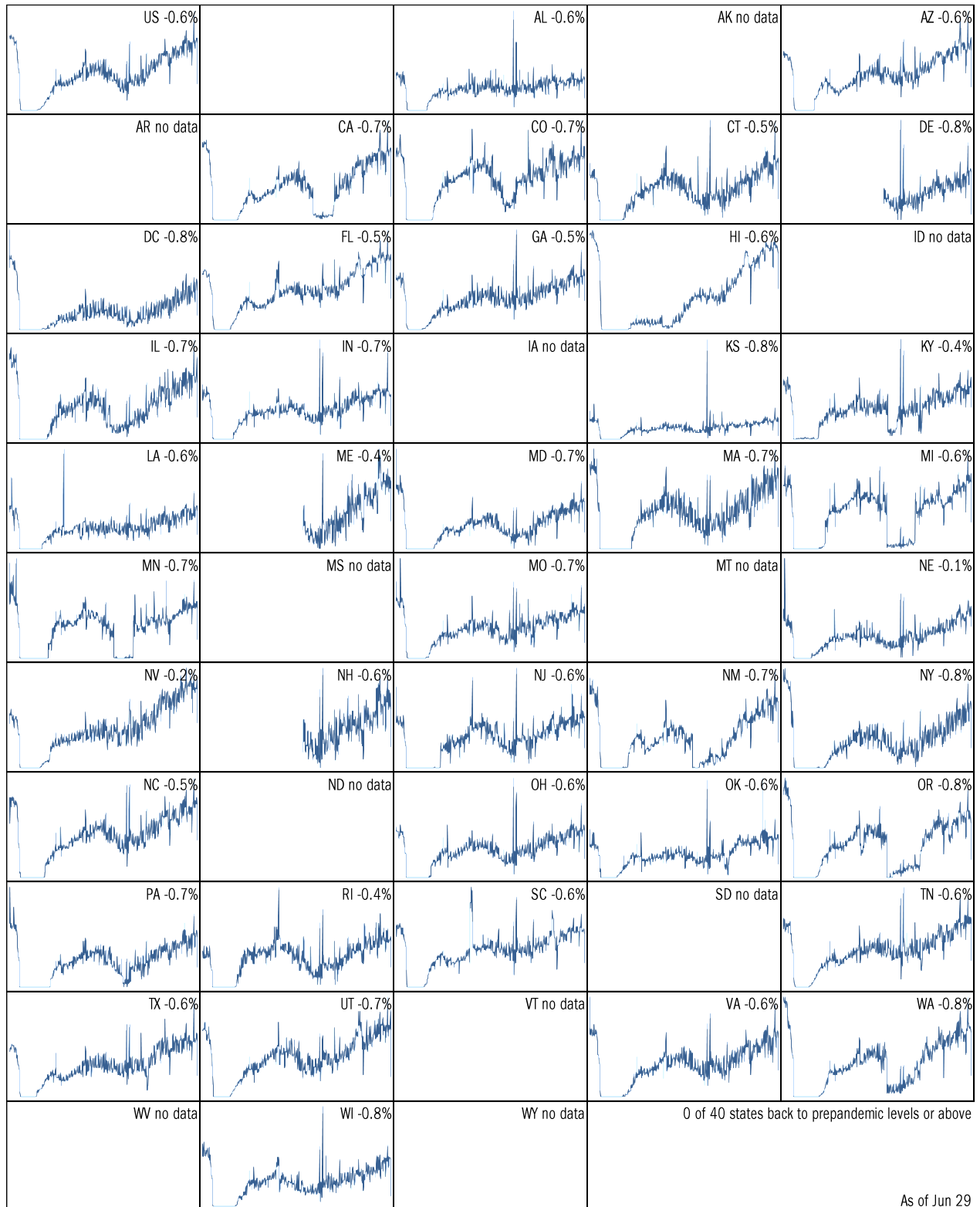


Source: [Google](#), after [University of Maryland Impact Analysis Platform](#), [Johns Hopkins](#), TrendMacro calcs

Make America eat again:

Seated diners in restaurants compared to 2019, Feb 2020 to present

■ Positive



Source: [Open Table](#), TrendMacro calculations

Make America move again: Mobility from Feb 5 vs Jan 3 – Feb 6 baseline Positive

	<i>Retail/rec</i>	<i>Grocery/pharm</i>	<i>Parks</i>	<i>Transit stations</i>	<i>Workplaces</i>	<i>Time at home</i>
US -4		1	51	-17	-26	5
AL -2		7	30	14	-18	4
AK +28		25	216	60	-19	1
AZ -14		-10	-27	-11	-28	6
AR +5		6	102	20	-20	3
CA -15		-7	8	-33	-32	6
CO -4		2	75	-10	-29	4
CT +1		-1	90	-9	-26	4
DE +9		11	73	-19	-24	4
DC -36		-15	-6	-56	-42	10
FL -11		-6	-15	-19	-26	6
GA -5		1	38	-4	-25	5
HI -17		-6	-11	-27	-30	7
ID +14		17	231	45	-21	0
IL -4		1	78	-18	-28	5

Source: [Google Mobility Reports](https://www.google.com/covid19/mobility/), TrendMacro calculations

Make America move again: Mobility from Feb 5 vs Jan 3 – Feb 6 baseline Positive

	<i>Retail/rec</i>	<i>Grocery/pharm</i>	<i>Parks</i>	<i>Transit stations</i>	<i>Workplaces</i>	<i>Residential</i>
IN +1						
		4	132	17	-22	3
IA +13						
		17	199	15	-20	2
KS +3						
		5	121	23	-21	2
KY -1						
		9	122	16	-22	3
LA -5						
		2	-4	-1	-23	4
ME +26						
		27	245	36	-21	1
MD -7						
		0	103	-30	-30	6
MA -6						
		-4	75	-34	-31	5
MI -1						
		4	157	-2	-24	5
MN +4						
		8	158	-12	-26	4
MS +1						
		1	25	39	-21	3
MO +7						
		7	101	14	-21	3
MT +26						
		39	224	73	-19	-1
NE +10						
		6	161	25	-21	2
NV -2						
		0	3	-11	-25	5

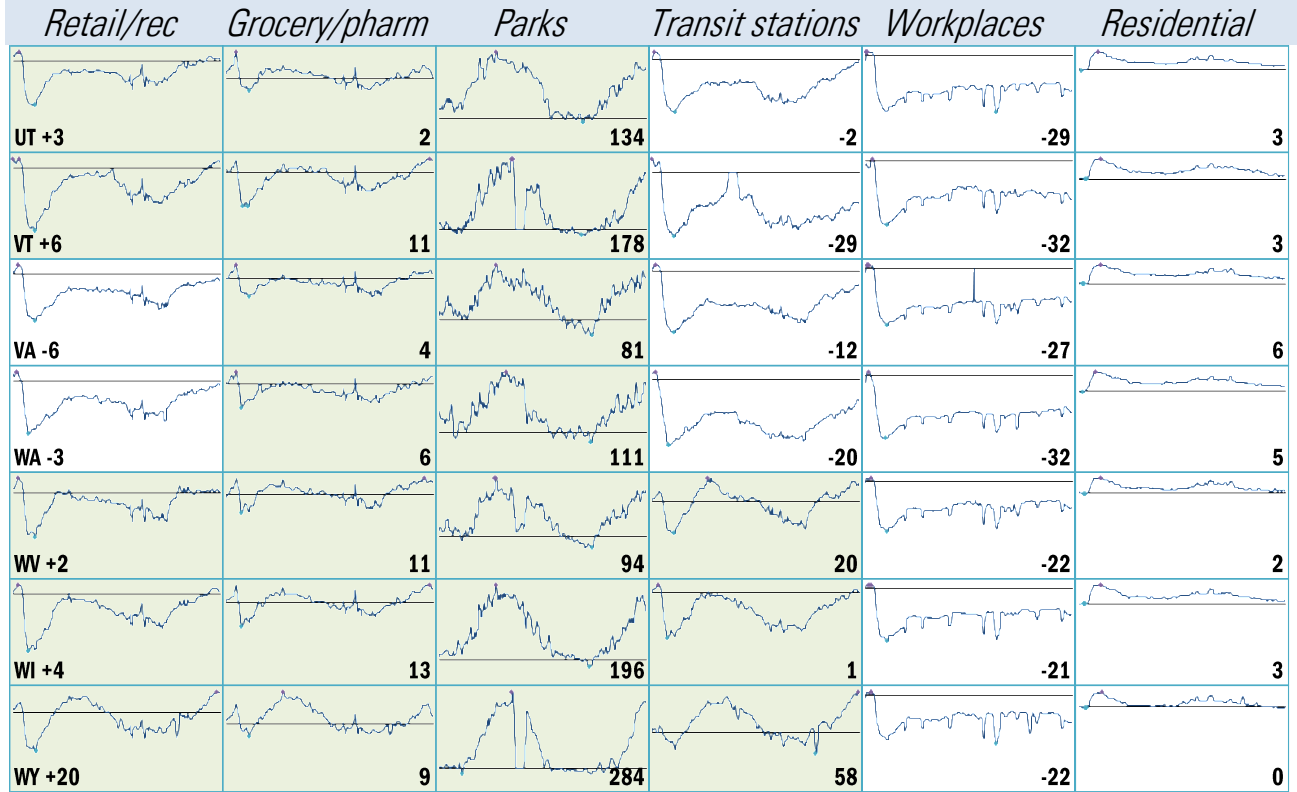
Source: [Google Mobility Reports](https://www.google.com/covid19/mobility/), TrendMacro calculations

Make America move again: Mobility from Feb 5 vs Jan 3 – Feb 6 baseline ■ Positive

	<i>Retail/rec</i>	<i>Grocery/pharm</i>	<i>Parks</i>	<i>Transit stations</i>	<i>Workplaces</i>	<i>Residential</i>
NH +10		12	207	-1	-23	3
NJ -1		5	118	-21	-29	5
NM -6		-1	36	5	-27	5
NY -9		0	66	-31	-29	5
NC -3		6	64	-5	-23	4
ND +5		3	185	16	-20	-1
OH +0		5	181	11	-23	3
OK +3		5	56	19	-20	3
OR -3		8	113	-11	-29	4
PA -3		4	117	-18	-26	4
RI +2		-1	231	-32	-23	3
SC +7		9	68	26	-20	3
SD +25		37	361	50	-16	0
TN +3		7	96	9	-21	3
TX -6		-1	9	-7	-28	5

Source: [Google Mobility Reports](https://www.google.com/covid19/mobility/), TrendMacro calculations

Make America move again: Mobility from Feb 5 vs Jan 3 – Feb 6 baseline ■ Positive



Source: [Google Mobility Reports](https://www.google.com/covid19/mobility/), TrendMacro calculations