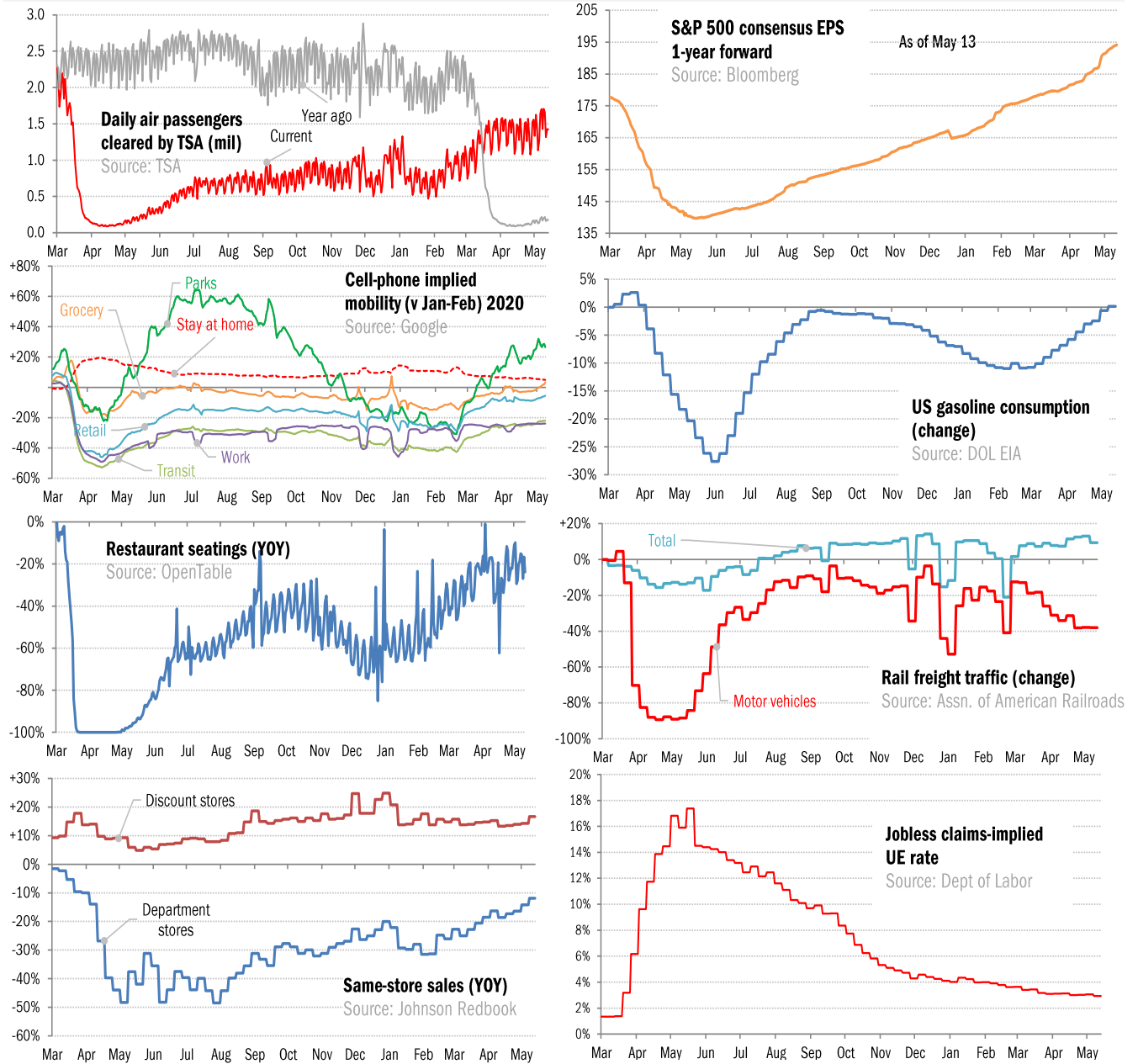


## Data Insights: High-Frequency Post-Virus US Recovery Monitor

Thursday, May 13, 2021

### The US high-frequency macro data dashboard

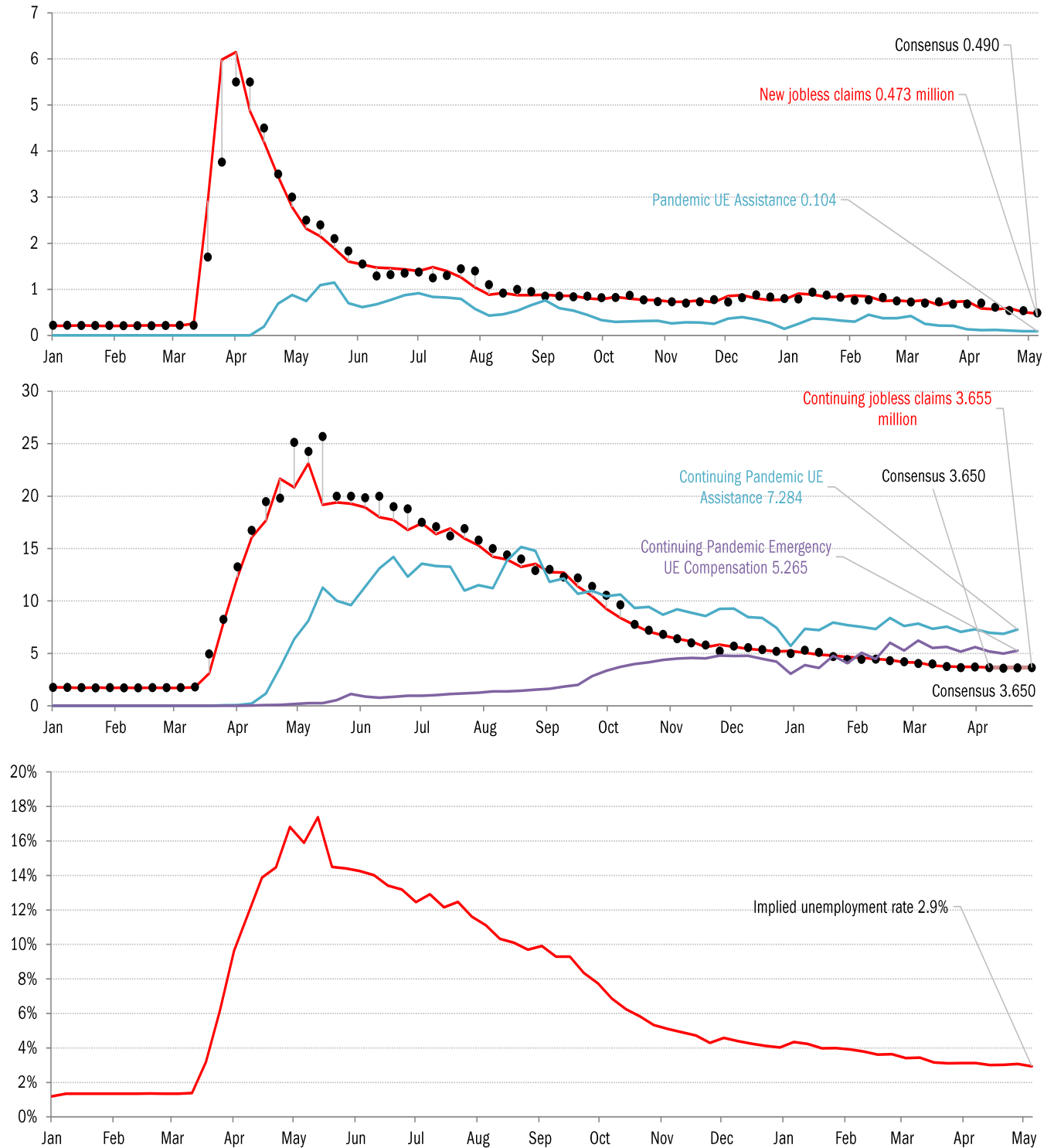
(state level and other detail in subsequent charts)



Source: As indicated, TrendMacro calculations

Copyright 2021 Trend Macrolytics LLC. All rights reserved. This document is not to be forwarded to individuals or organizations not authorized by Trend Macrolytics LLC to receive it. For information purposes only; not to be deemed to be recommendations for buying or selling specific securities or to constitute personalized investment advice. Derived from sources deemed to be reliable, but no warranty is made as to accuracy.

# High-frequency view of the US labor market: weekly unemployment claims (millions)

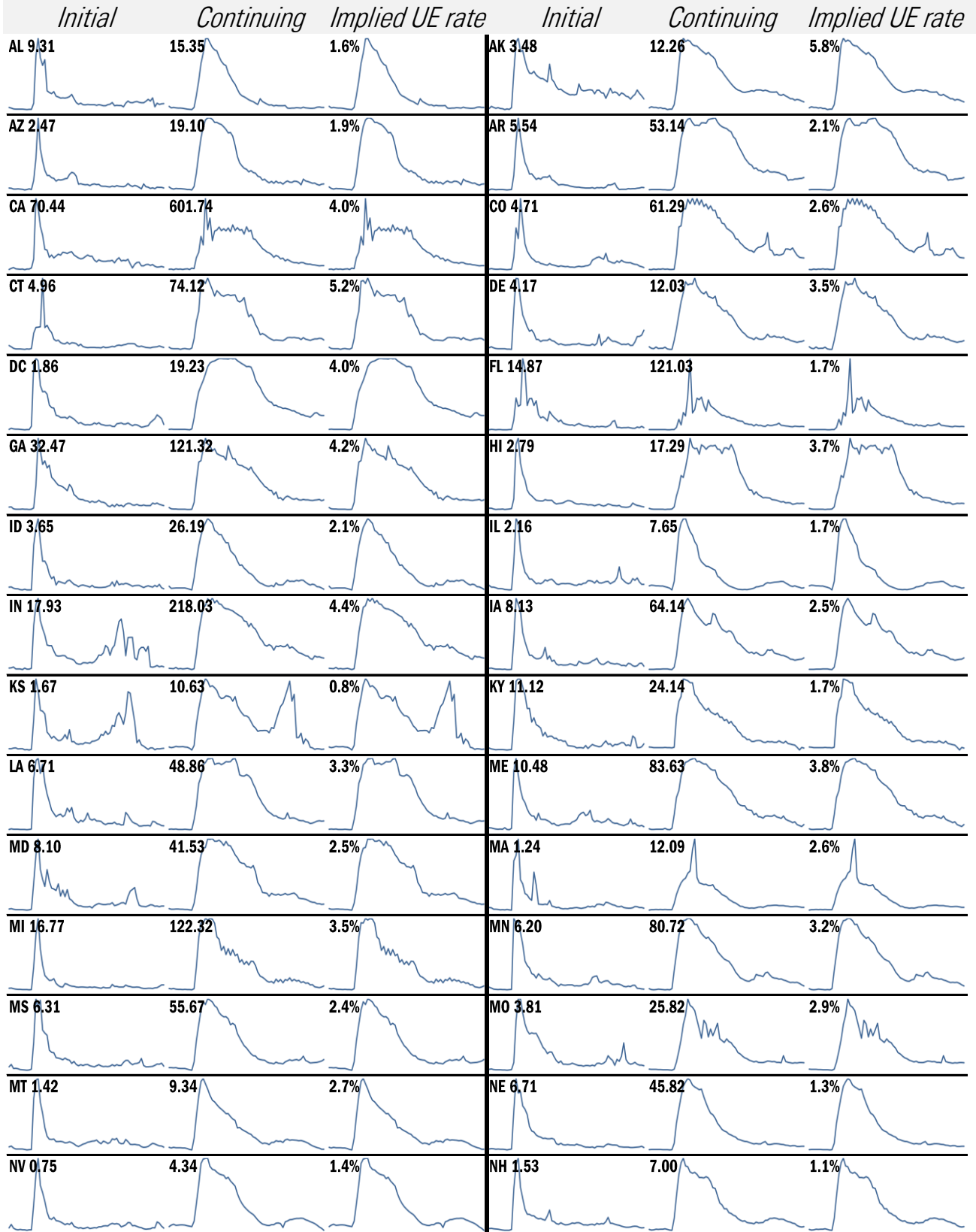


Source: Department of Labor, Bloomberg, TrendMacro calculations

**For more information contact us:**

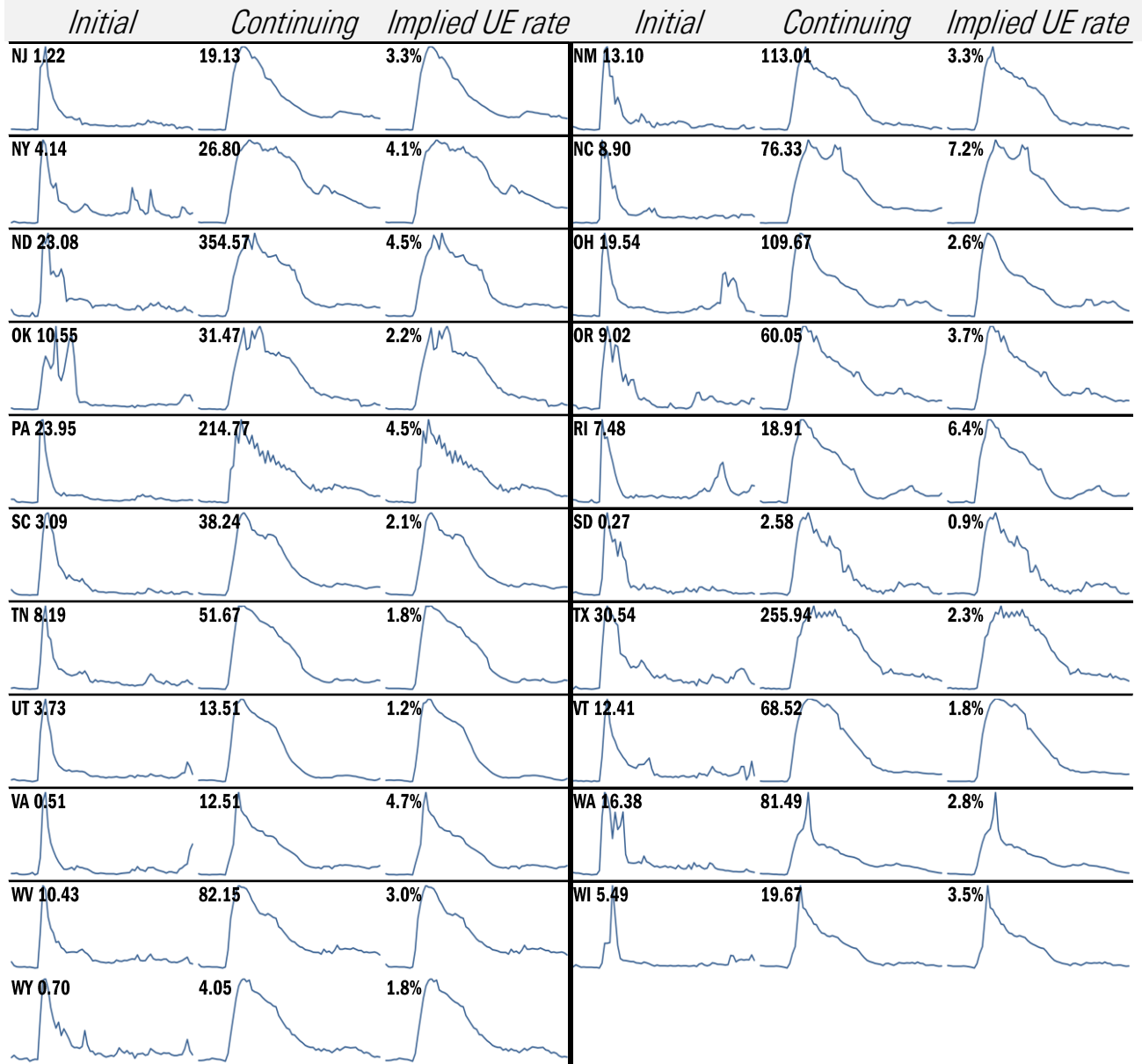
Donald Luskin: 312 273 6766 [don@trendmacro.com](mailto:don@trendmacro.com)  
 Thomas Demas: 704 552 3625 [tdemas@trendmacro.com](mailto:tdemas@trendmacro.com)

# State by state unemployment insurance claims (thousands)



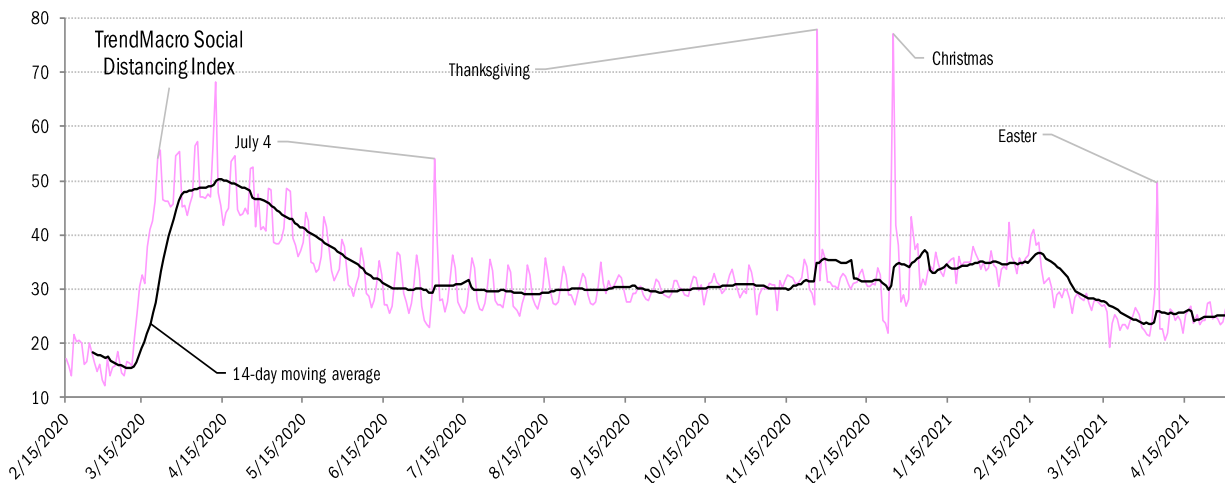
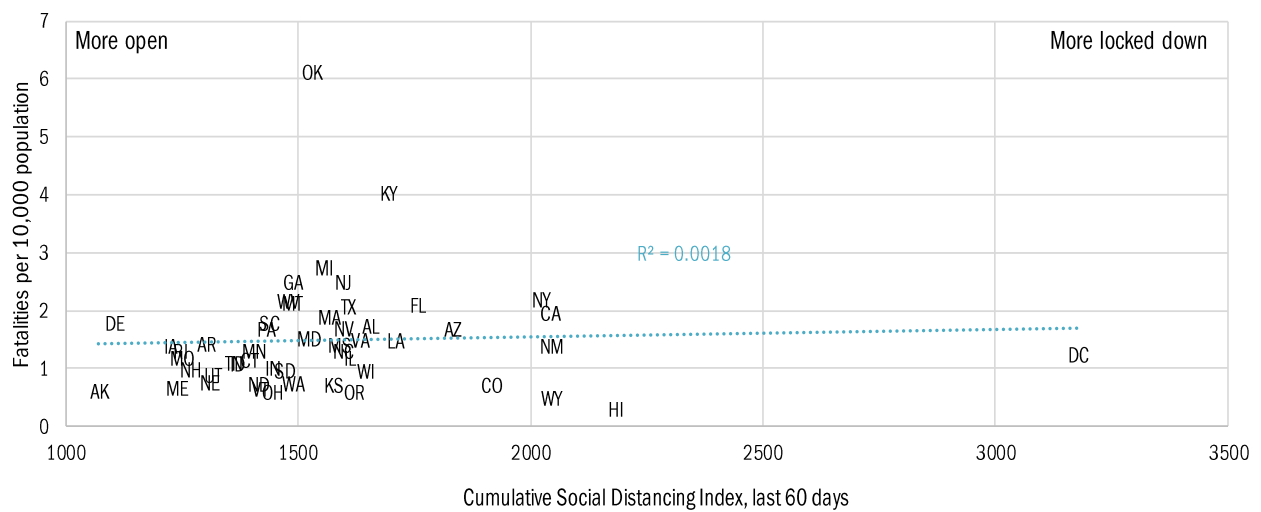
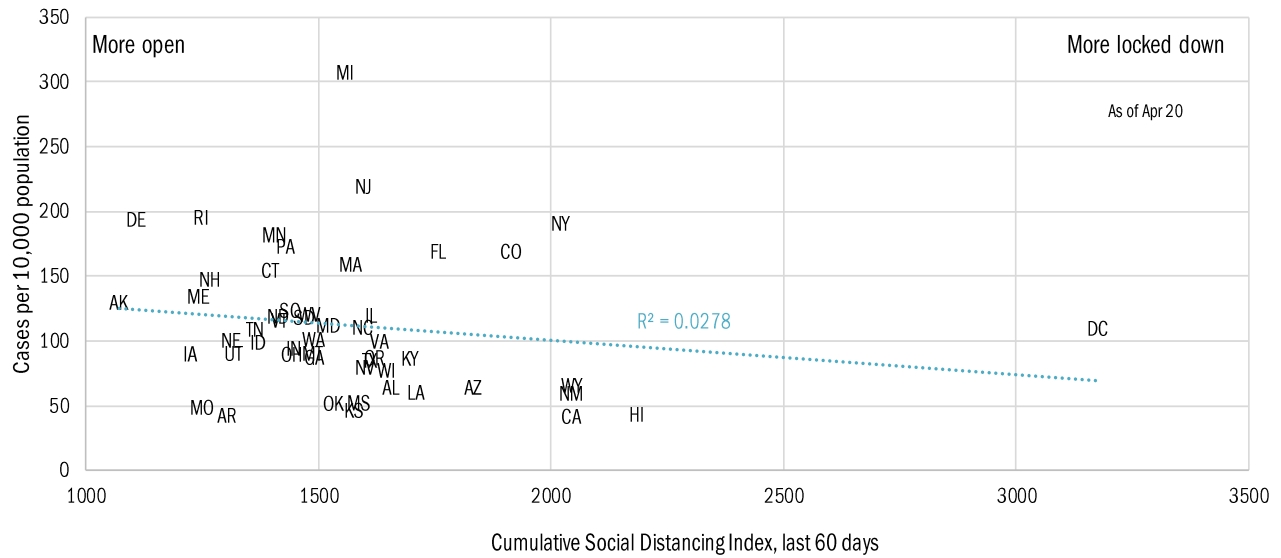
Source: Department of Labor, TrendMacro calculations

# State by state unemployment insurance claims (thousands)



Source: Department of Labor, TrendMacro calculations

# Opening up in the spring following the "dark winter" lockdowns Covid-19 fatalities and cases vs social distancing measured by cell-phone mobility data

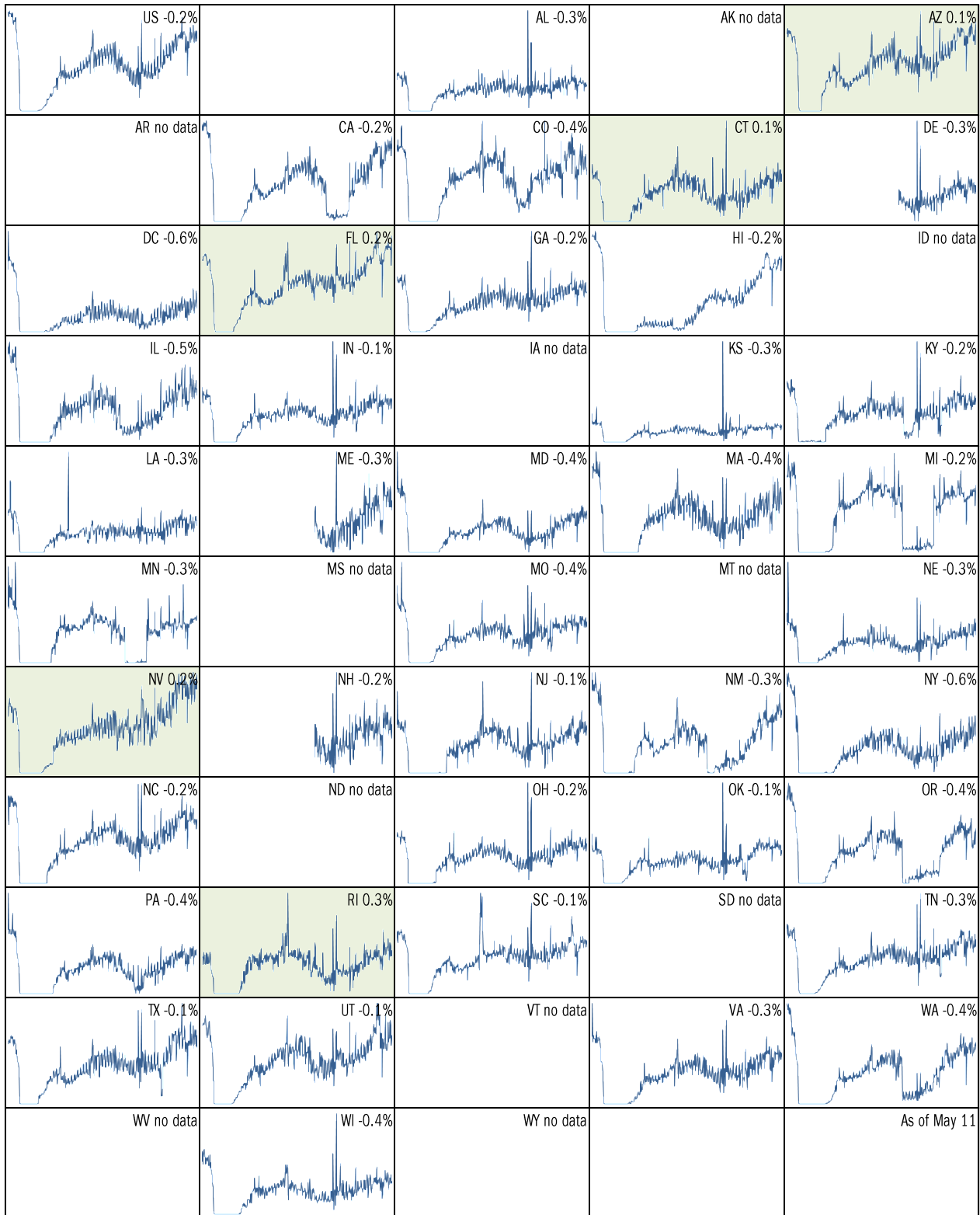


Source: [Google](#), after [University of Maryland Impact Analysis Platform](#), [Johns Hopkins](#), TrendMacro calcs

# Make America eat again:

Seated diners in restaurants compared to 2019, Feb 18 to present

■ Positive



Source: [Open Table](#), TrendMacro calculations

Make America move again: Mobility from Feb 5 vs Jan 3 – Feb 6 baseline   Positive

	<i>Retail/rec</i>	<i>Grocery/pharm</i>	<i>Parks</i>	<i>Transit stations</i>	<i>Workplaces</i>	<i>Time at home</i>
<b>US -6</b>		3	27	-22	-24	5
<b>AL +1</b>		9	18	8	-17	3
<b>AK +12</b>		11	65	5	-16	3
<b>AZ -9</b>		-1	-9	-11	-25	6
<b>AR +7</b>		11	75	13	-16	2
<b>CA -17</b>		-5	-1	-35	-31	8
<b>CO -10</b>		3	29	-22	-27	6
<b>CT -3</b>		0	53	-17	-22	5
<b>DE +3</b>		8	35	-23	-23	5
<b>DC -43</b>		-17	-27	-63	-45	13
<b>FL -9</b>		-1	-10	-20	-23	4
<b>GA -4</b>		3	25	-14	-24	5
<b>HI -21</b>		-5	-25	-38	-28	8
<b>ID +10</b>		18	121	18	-15	1
<b>IL -6</b>		5	56	-24	-25	5

Source: [Google Mobility Reports](https://www.google.com/covid19/mobility/), TrendMacro calculations

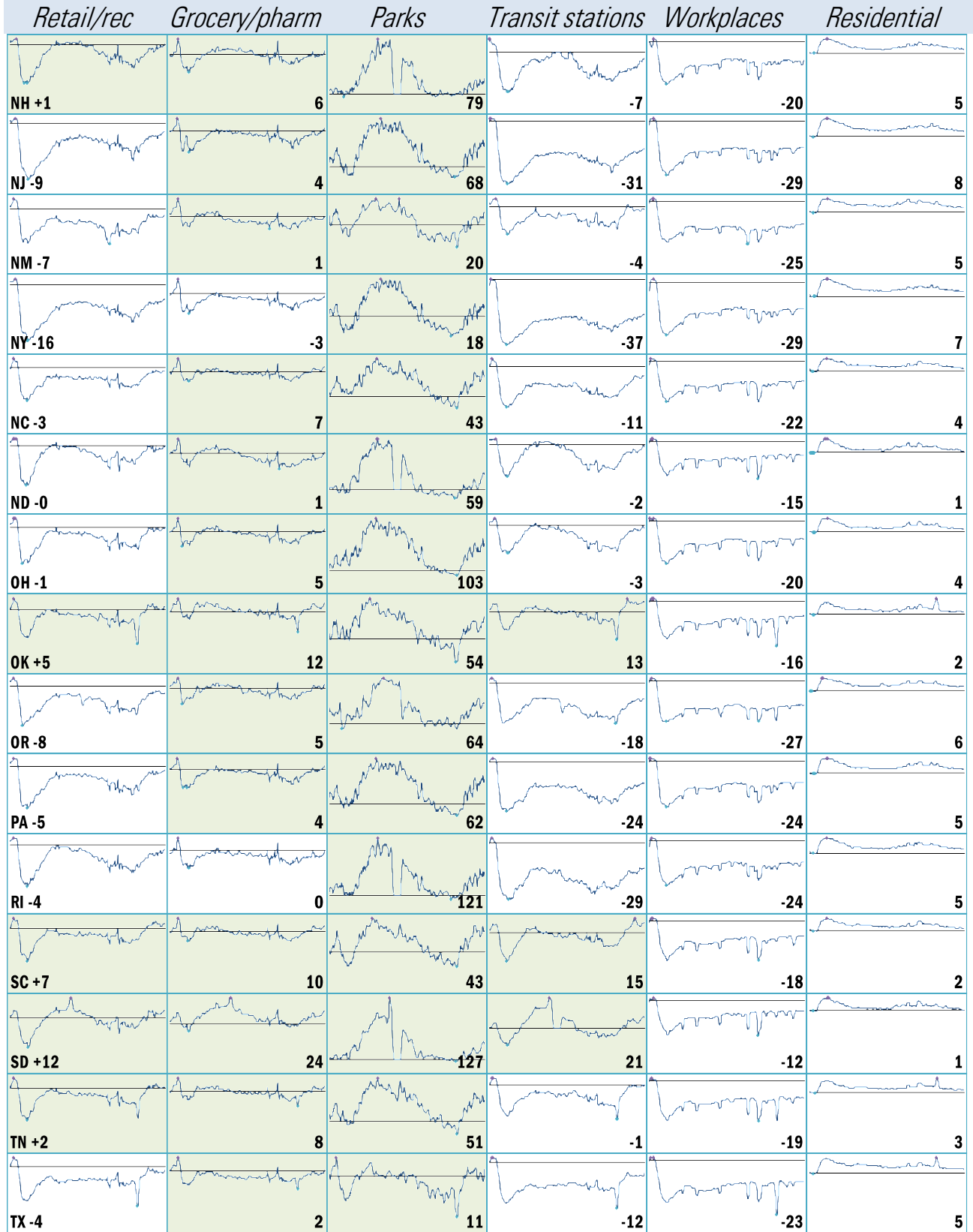
Make America move again: Mobility from Feb 5 vs Jan 3 – Feb 6 baseline ■ Positive

	<i>Retail/rec</i>	<i>Grocery/pharm</i>	<i>Parks</i>	<i>Transit stations</i>	<i>Workplaces</i>	<i>Residential</i>
<b>IN +2</b>		6	95	5	-19	3
<b>IA +11</b>		26	133	1	-15	2
<b>KS +3</b>		7	106	13	-16	2
<b>KY -1</b>		10	81	3	-21	3
<b>LA -1</b>		8	-4	-7	-19	3
<b>ME +7</b>		13	85	-1	-20	4
<b>MD -9</b>		0	57	-30	-29	8
<b>MA -12</b>		-3	34	-42	-30	8
<b>MI -5</b>		4	107	-10	-24	6
<b>MN -2</b>		5	78	-23	-23	6
<b>MS +5</b>		6	16	22	-18	2
<b>MO +6</b>		11	69	4	-17	2
<b>MT +12</b>		21	75	25	-15	1
<b>NE +7</b>		11	93	9	-17	2
<b>NV -5</b>		4	4	-18	-25	5

Source: [Google Mobility Reports](https://www.google.com/covid19/mobility/), TrendMacro calculations

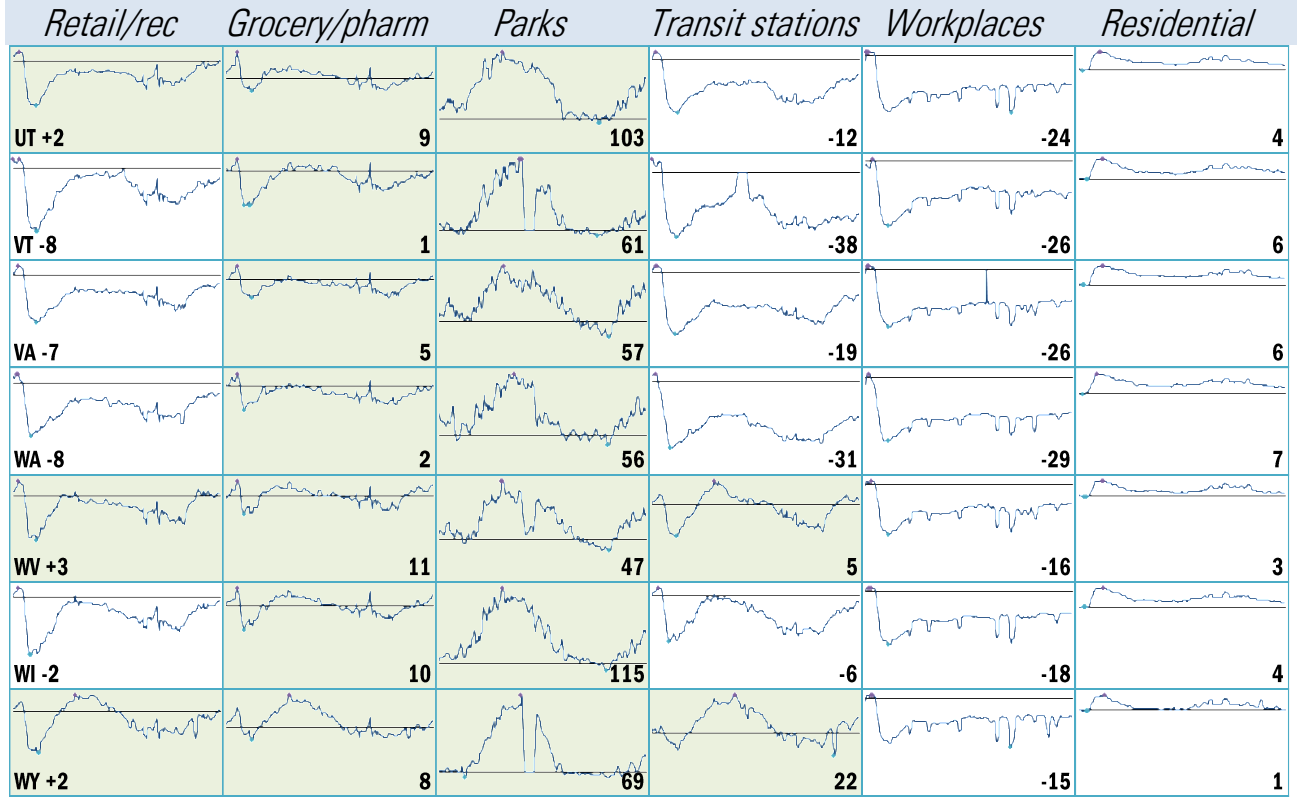


Make America move again: Mobility from Feb 5 vs Jan 3 – Feb 6 baseline   Positive



Source: [Google Mobility Reports](https://www.google.com/covid19/mobility/), TrendMacro calculations

Make America move again: Mobility from Feb 5 vs Jan 3 – Feb 6 baseline ■ Positive



Source: [Google Mobility Reports](https://www.google.com/covid19/mobility/), TrendMacro calculations