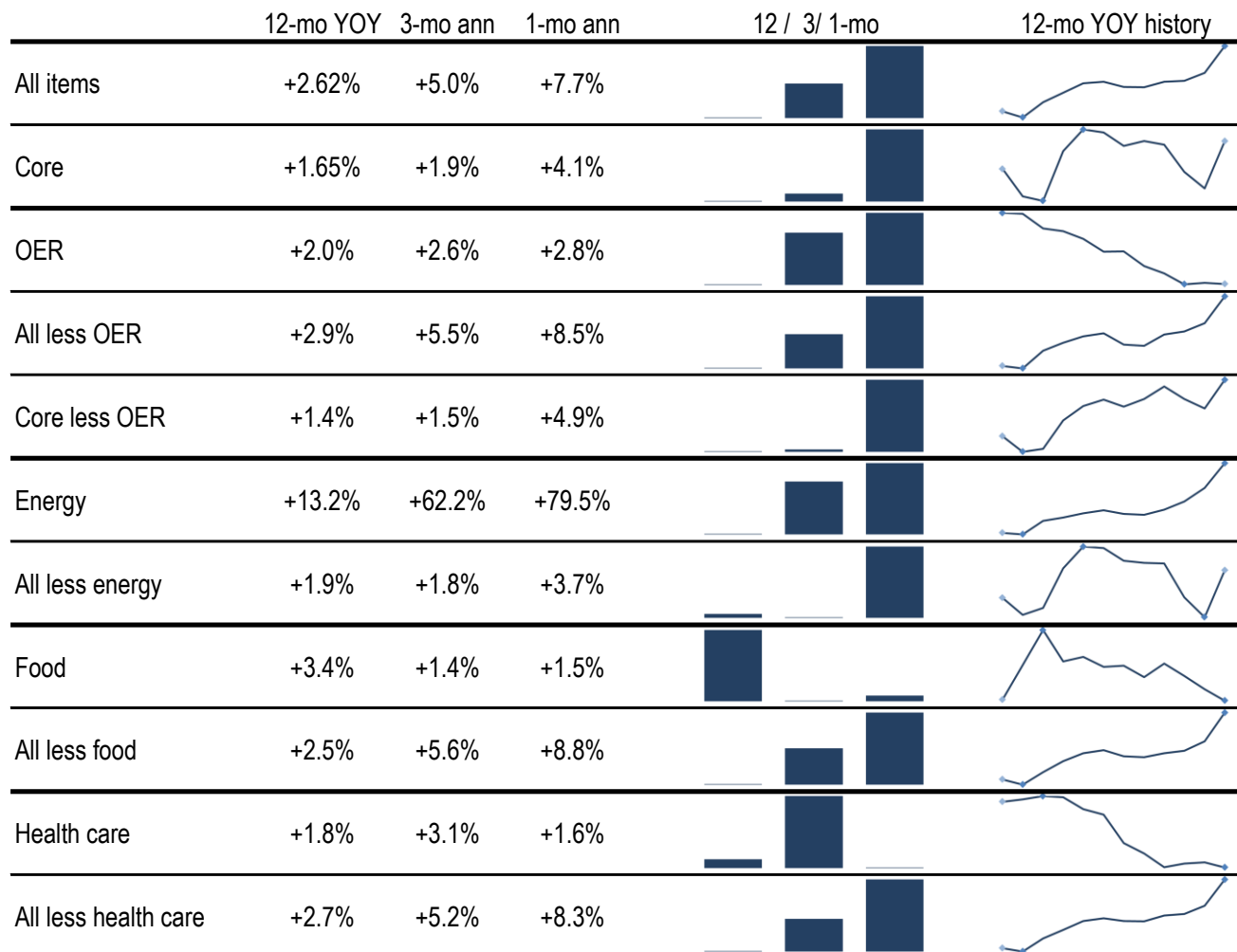


Data Insights: Consumer Price Index, Producer Price Index

Tuesday, April 13, 2021

Today's CPI data: what you need to know



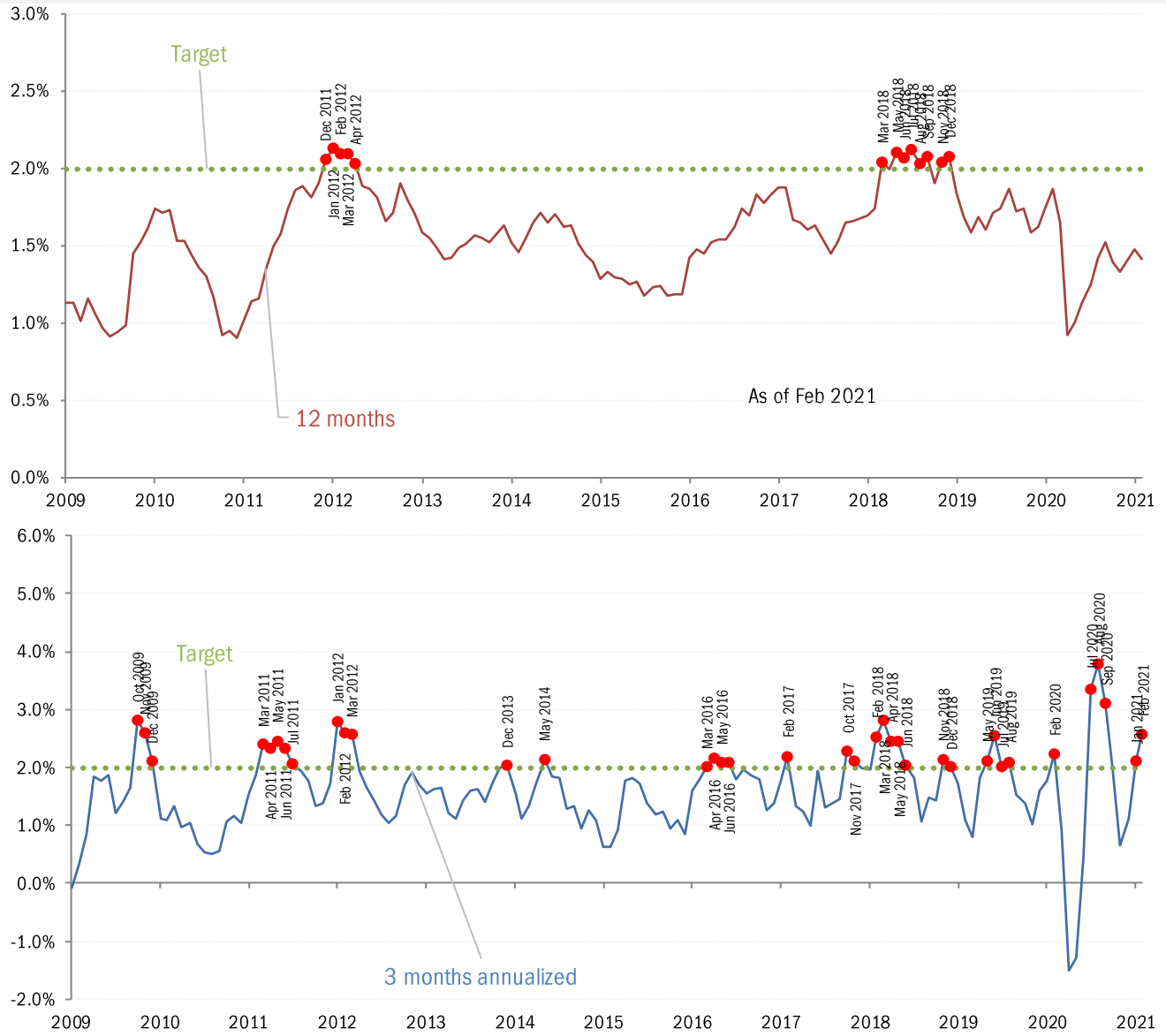
Source: BLS Consumer Price Index, TrendMacro calculations

For more information contact us:

Donald Luskin: 312 273 6766 don@trendmacro.com
 Thomas Demas: 704 552 3625 tdemas@trendmacro.com

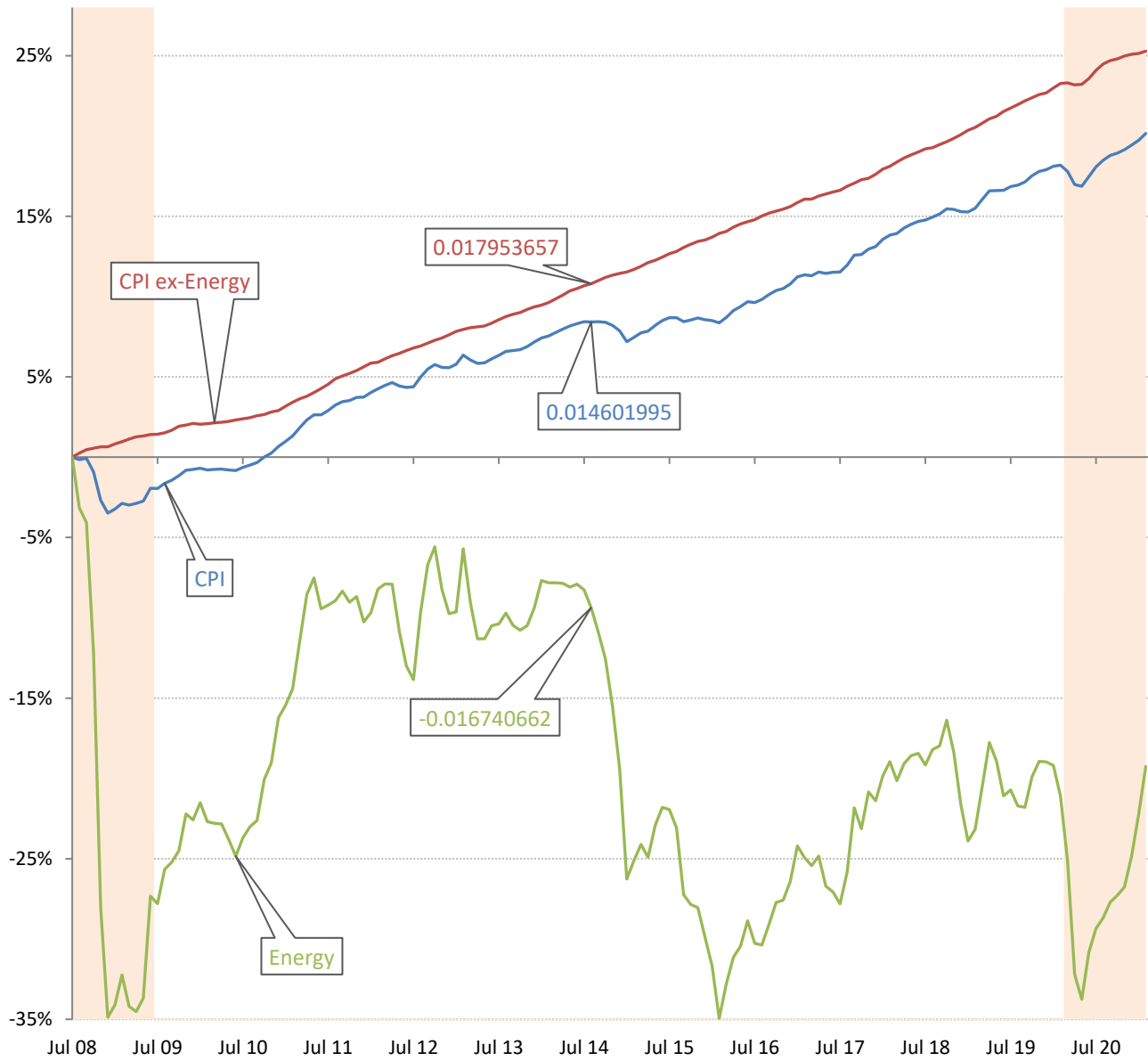
The Fed-eye view of inflation (or lack thereof)

Core PCE Price Index



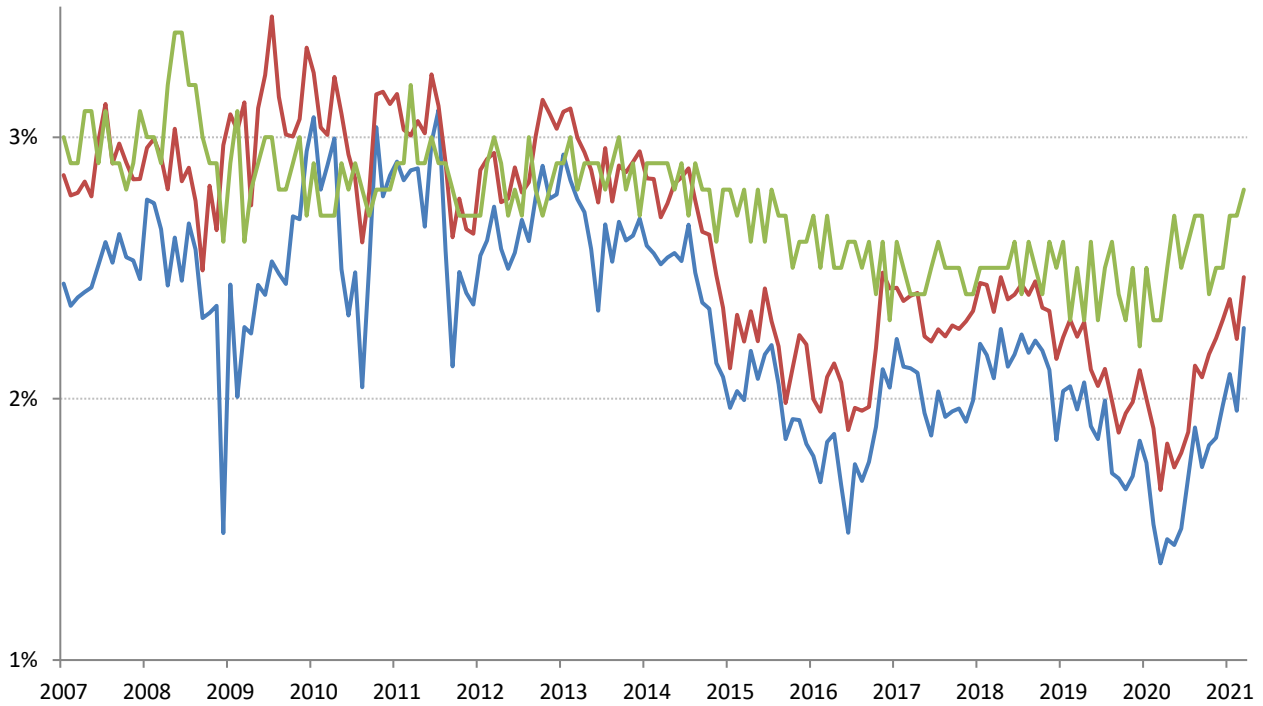
Source: Bureau of Economic Analysis, TrendMacro calculations

The deflation delusion: it's all about oil, and always has been
Cumulative growth of CPI from July 2008, the all-time high oil price Recession



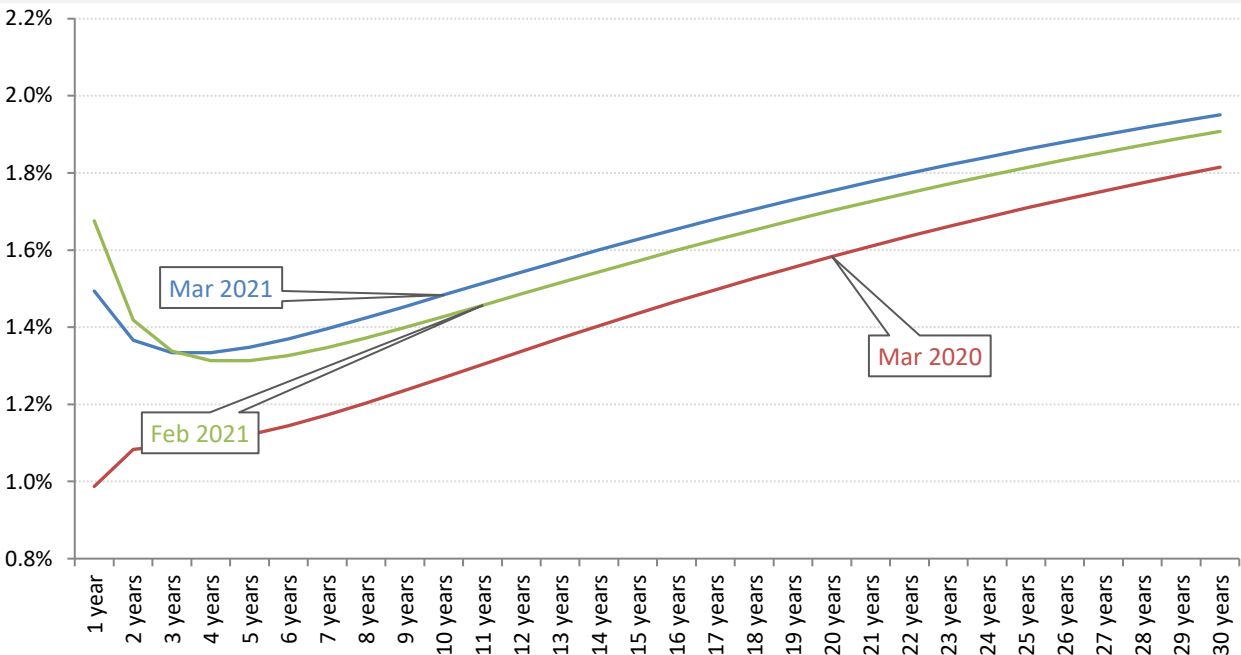
Source: Bloomberg, TrendMacro calculations

Implied 5-year inflation, 5 years forward — TIPS — Swaps — U. Michigan Survey



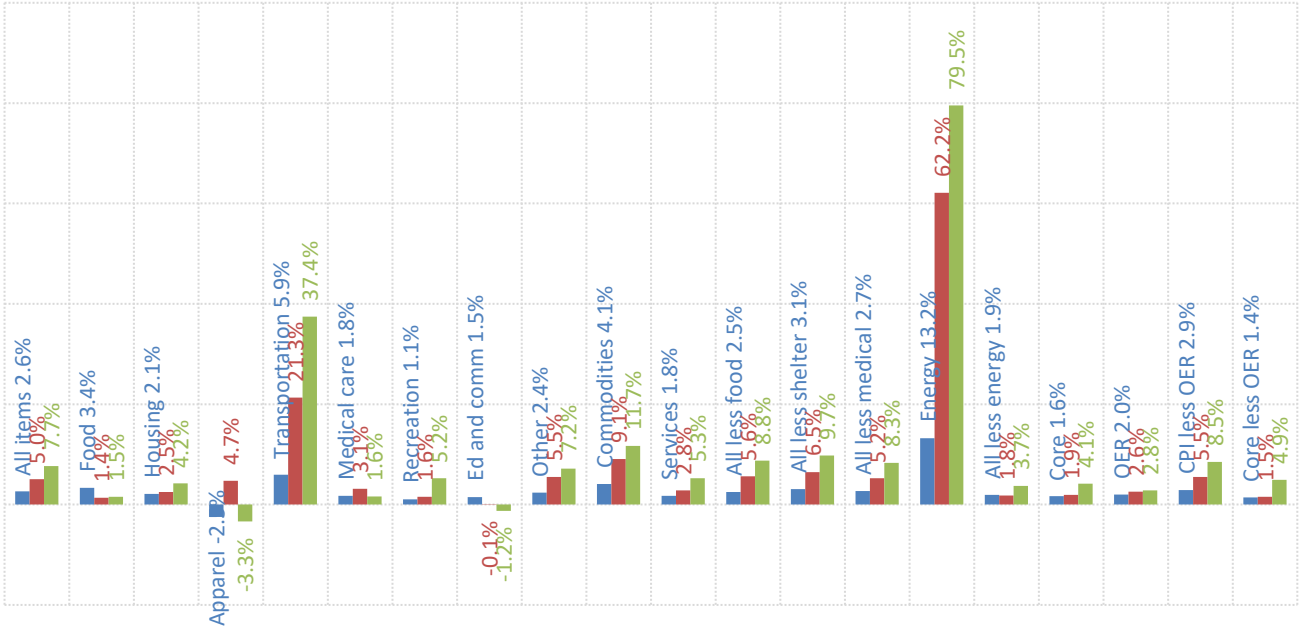
Source: Bloomberg, TrendMacro calculations

Modelled inflation yield curve, per annum — Based on swaps, forecasts and yields



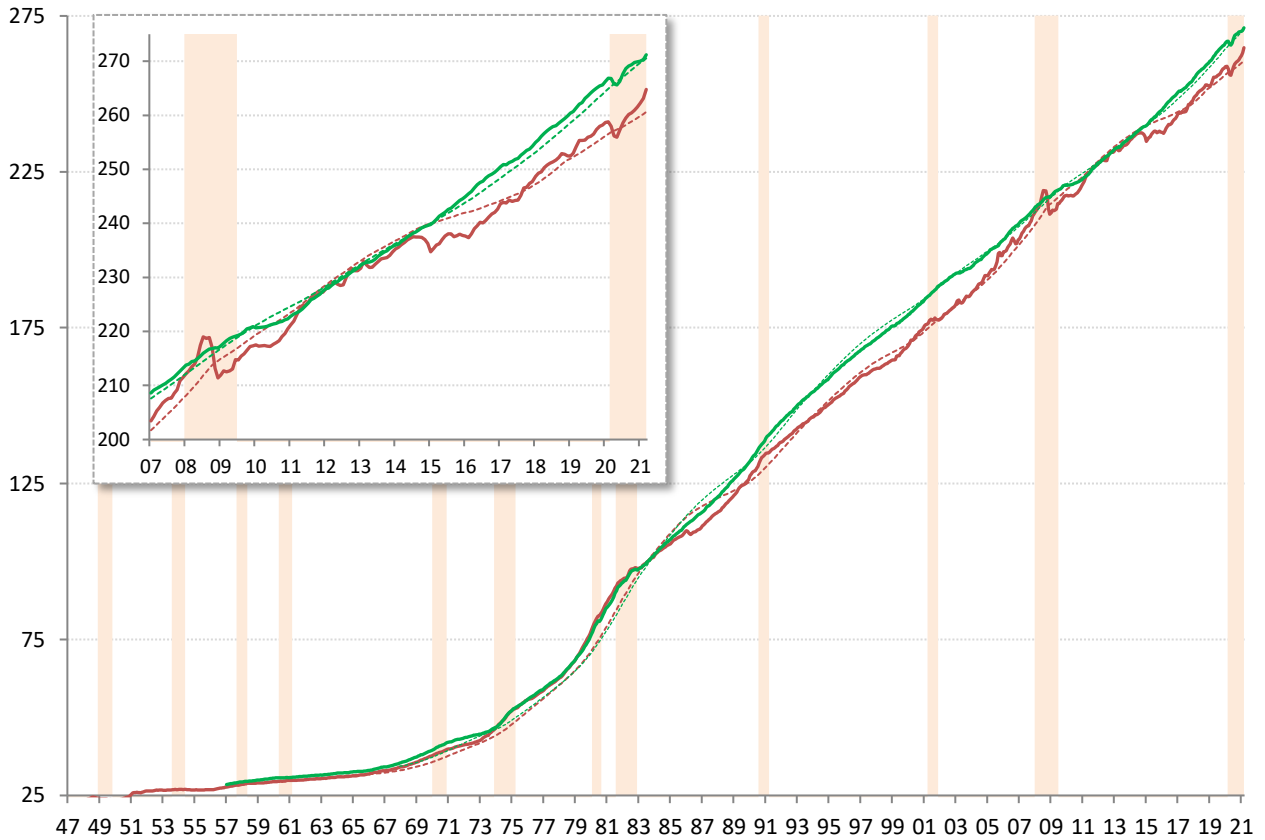
Source: [Cleveland Fed](#), TrendMacro calculations

US CPI inflation by sector (SAAR) ■ 12-month ■ 3-month ■ 1-month



Source: BLS Consumer Price Index, TrendMacro calculations

US CPI Core — Level ... 20-year trend ■ Recession

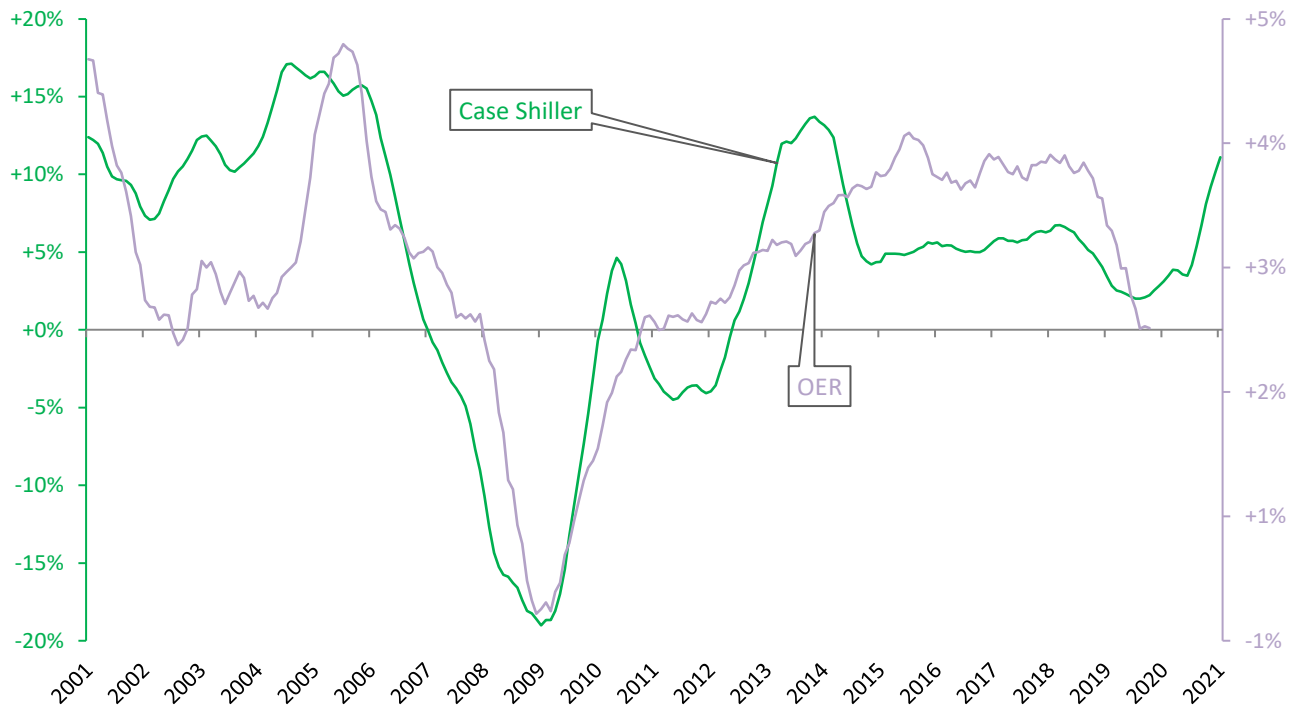


Source: BLS Consumer Price Index, TrendMacro calculations

Housing leads US CPI

Year-over-year change

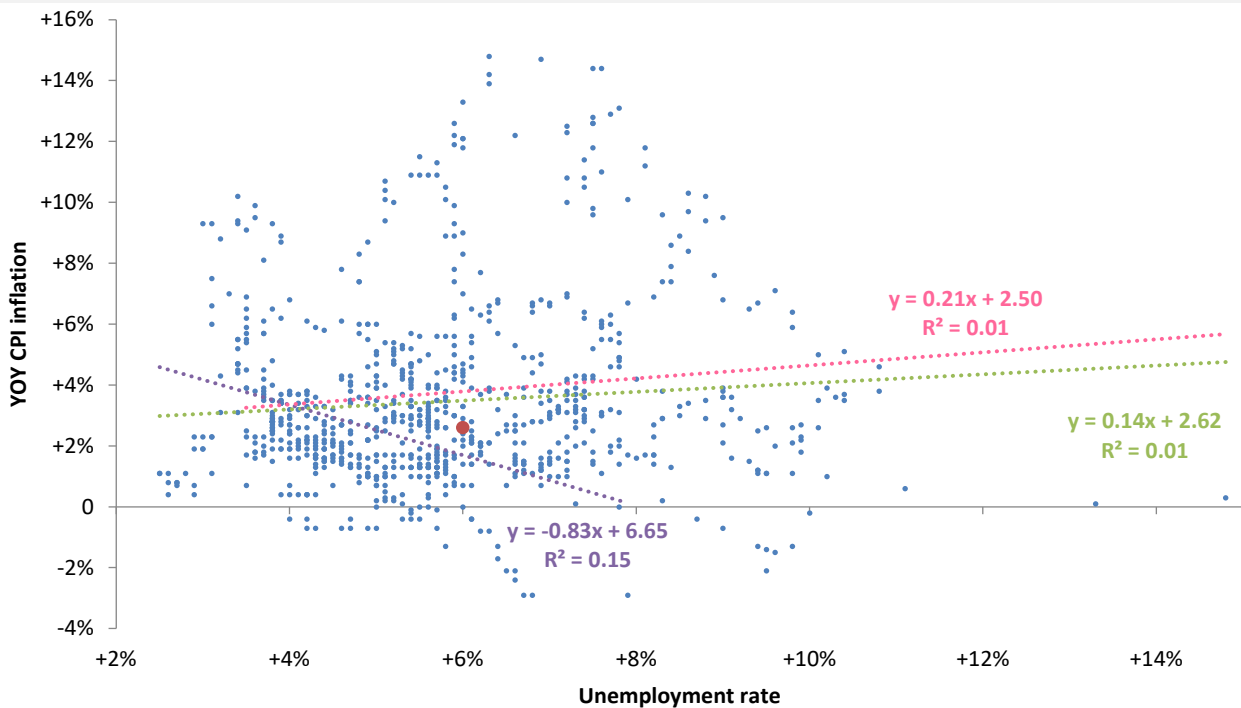
— Case Shiller 20-city avg — Owner's equivalent rent CPI component, 18-mo lag



Source: BLS, Standard & Poor's Case Shiller, TrendMacro calculations

The world is flat: the vanishing Phillips Curve

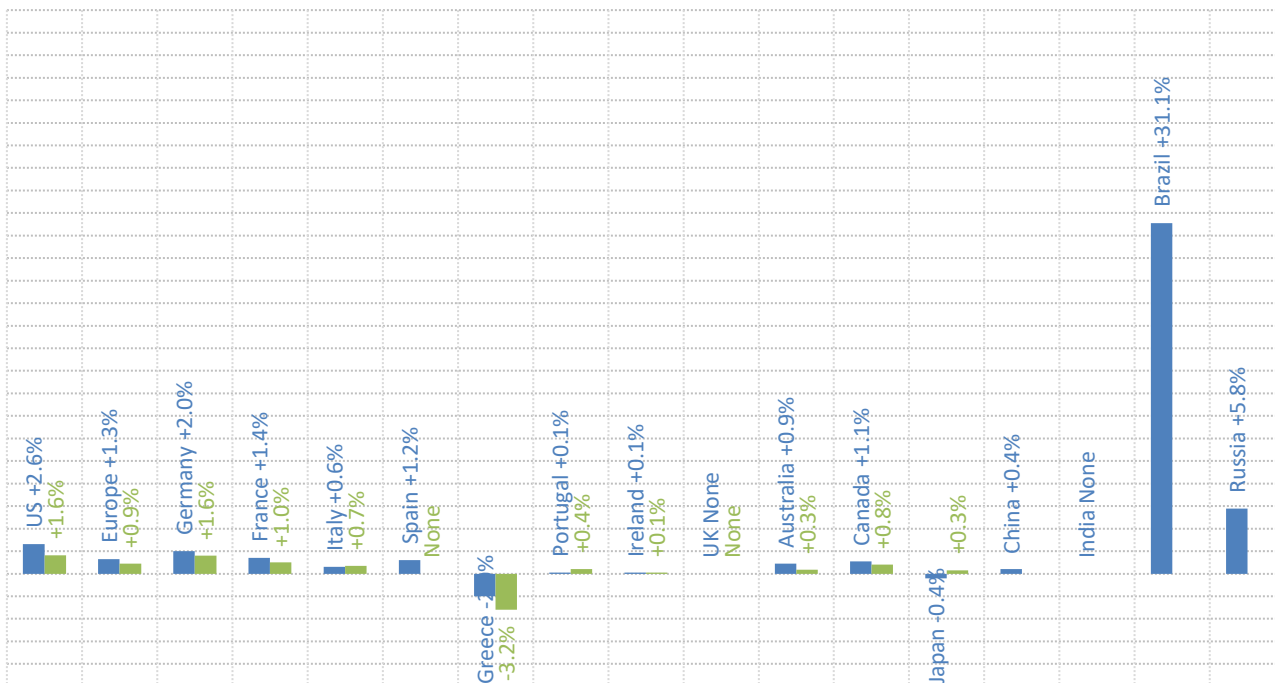
● Latest Linear trend: — Pre-74 — Post-74 — All



Source: BLS Consumer Price Index, Current Population Survey

Major economies CPI, year on year

■ Headline ■ Ex-food and energy



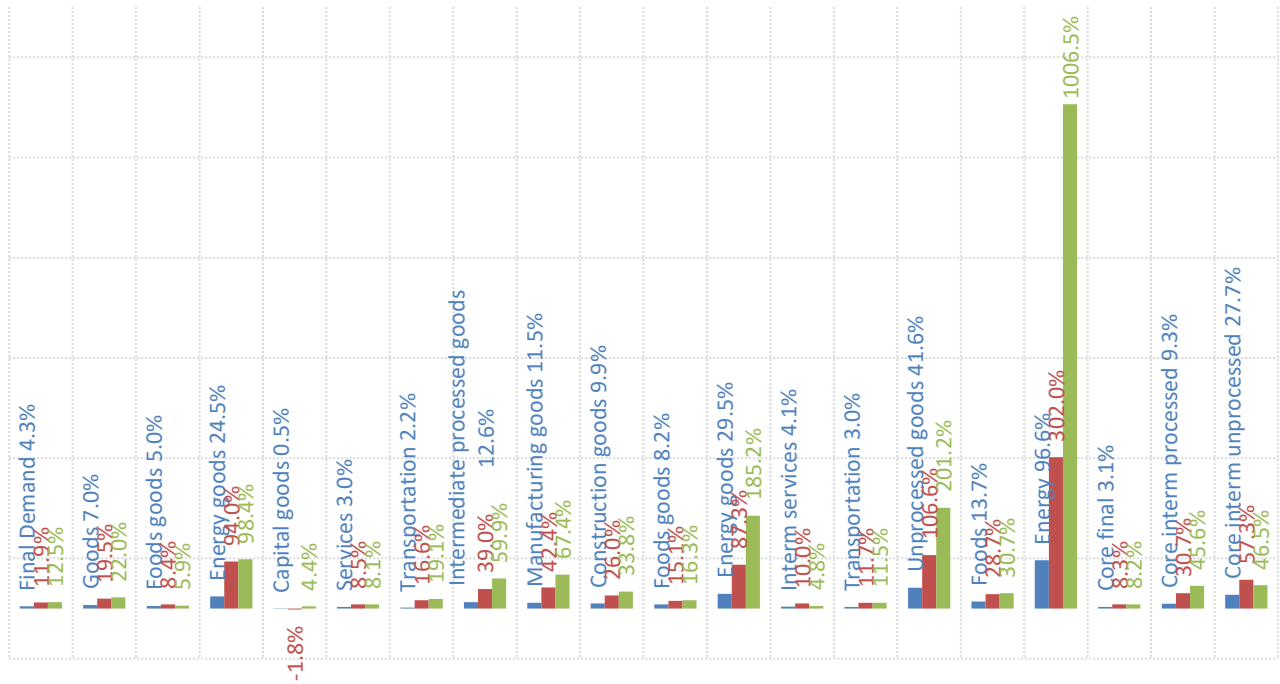
Source: Respective Statistical agencies, TrendMacro calculations

PPI data: what you need to know

	12-mo YOY	3-mo ann	1-mo ann	12 / 3 / 1-mo	13-mo YOY history
Final demand	+4.3%	+11.9%	+12.5%		
Core	+3.1%	+8.3%	+8.2%		
Intermediate processed	+12.6%	+39.0%	+59.9%		
Core	+9.3%	+30.7%	+45.6%		
Intermediate unprocessed	+41.6%	+106.6%	+201.2%		
Core	+27.7%	+57.3%	+46.5%		

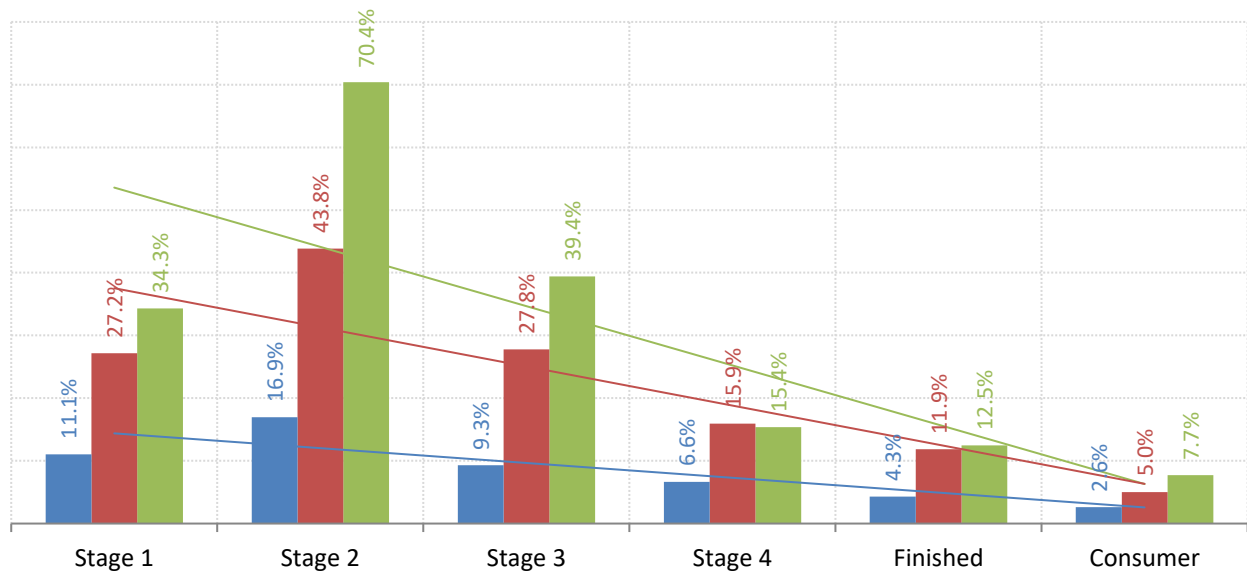
Source: BLS Producer Price Index, TrendMacro calculations

PPI inflation by sector (SAAR) ■ 12-mo ■ 3-mo ■ 1-mo



Source: BLS Producer Price Index, TrendMacro calculations

The inflation pipeline (SAAR) ■ 12-mo ■ 3-mo ■ 1-mo



Source: BLS Producer Price Index and Consumer Price Index, TrendMacro calculations