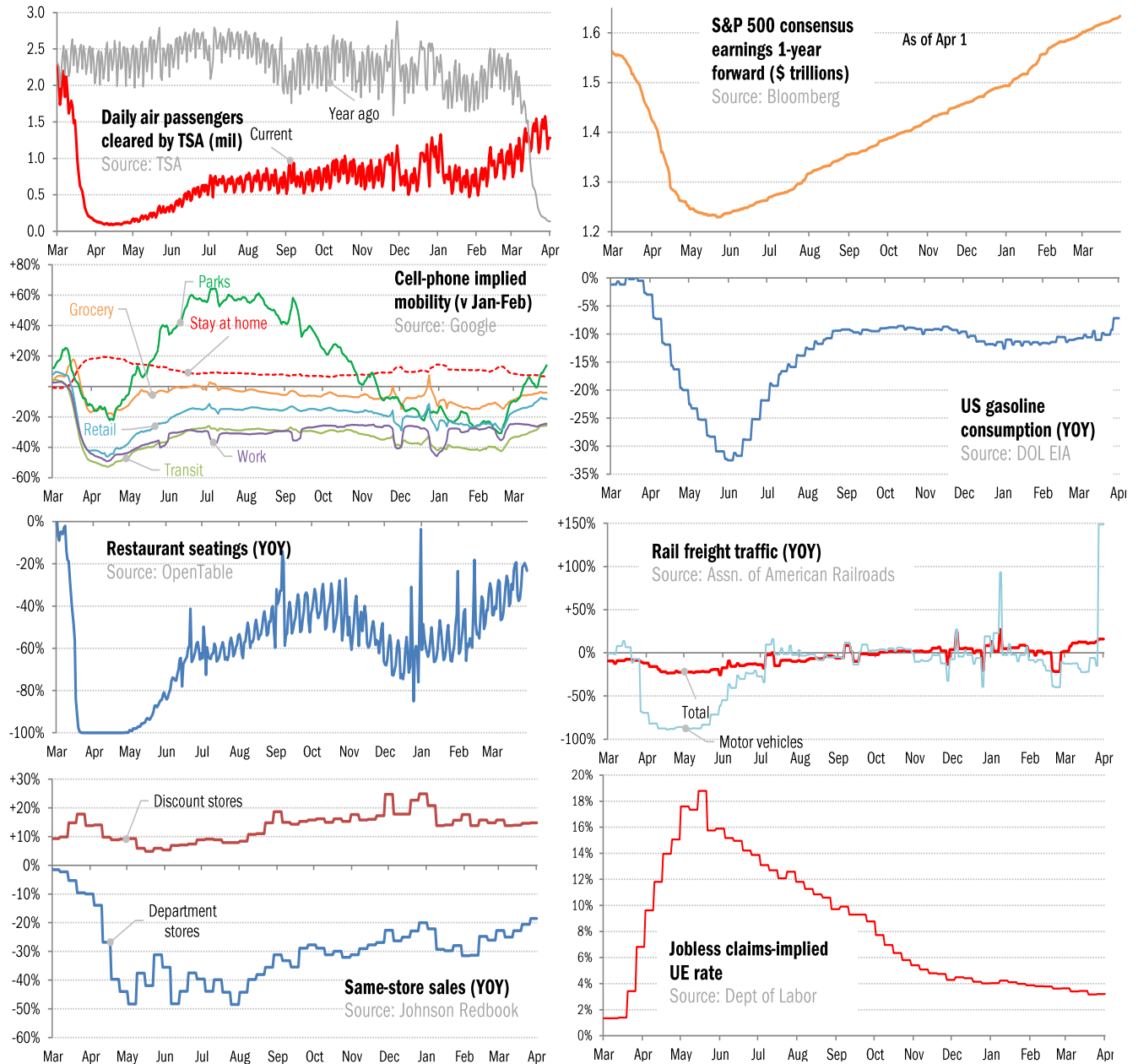


Data Insights: High-Frequency Post-Virus US Recovery Monitor

Thursday, April 1, 2021

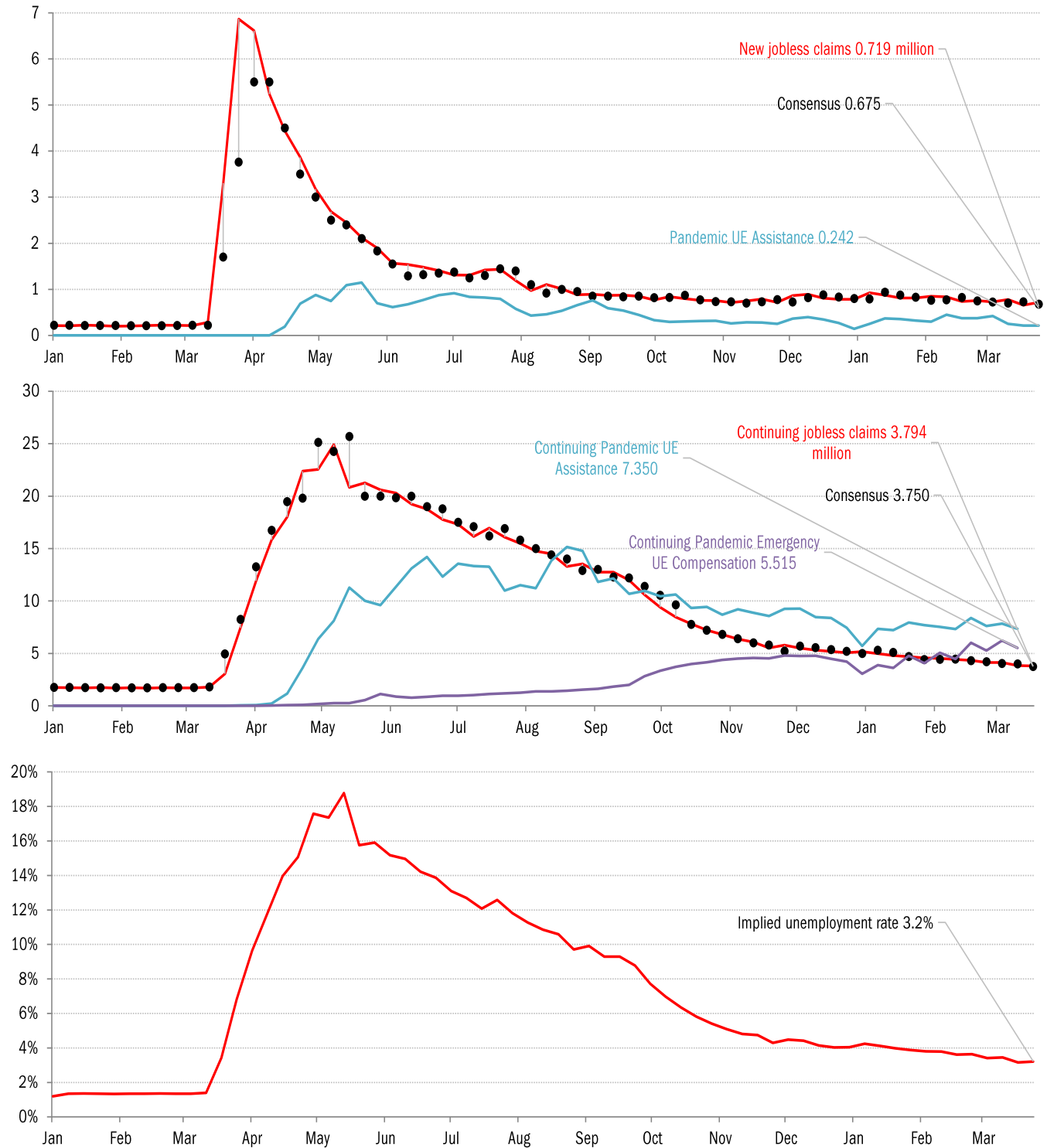
The US high-frequency macro data dashboard

(state level and other detail in subsequent charts)



Source: As indicated, TrendMacro calculations

High-frequency view of the US labor market: weekly unemployment claims (millions)

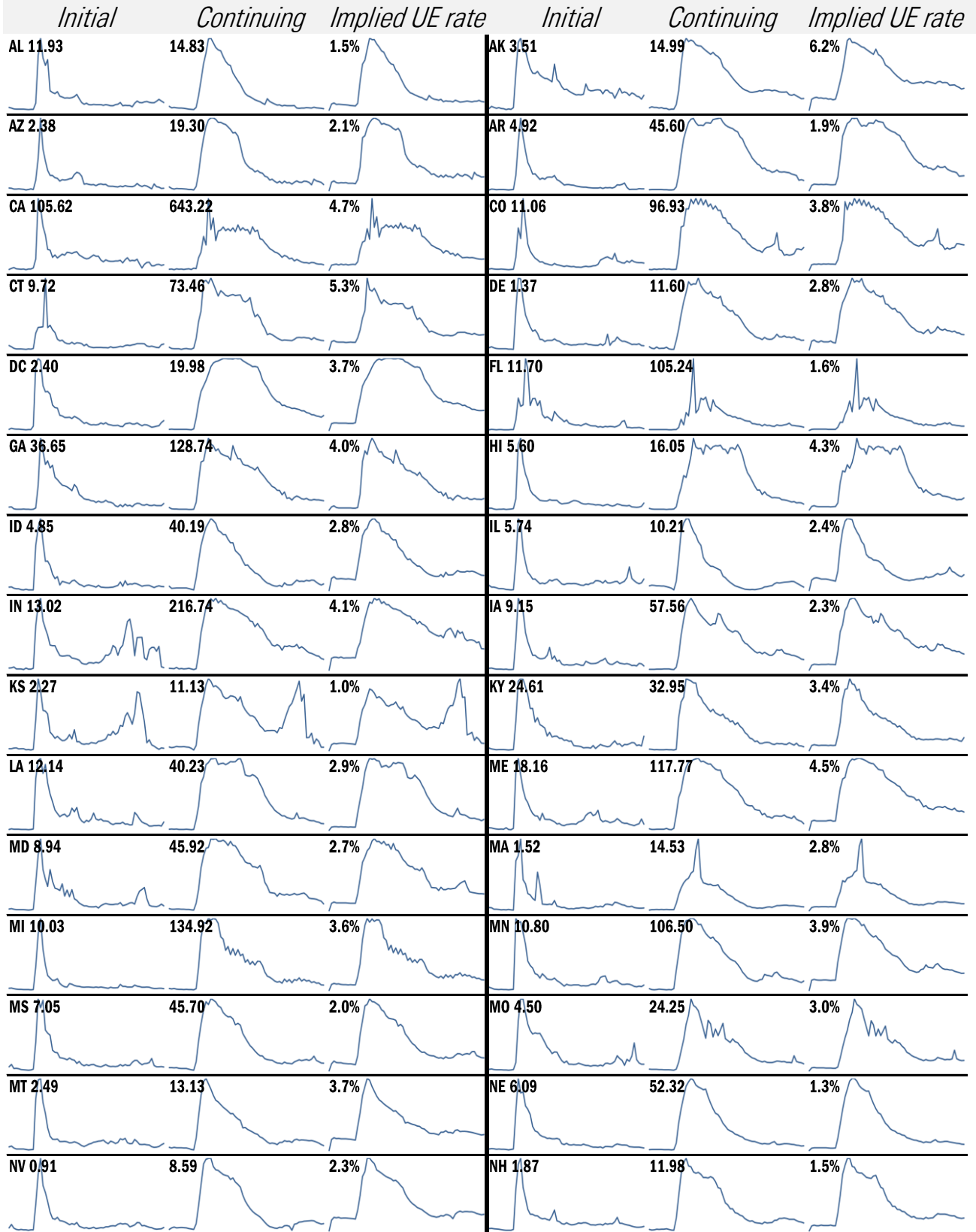


Source: Department of Labor, Bloomberg, TrendMacro calculations

For more information contact us:

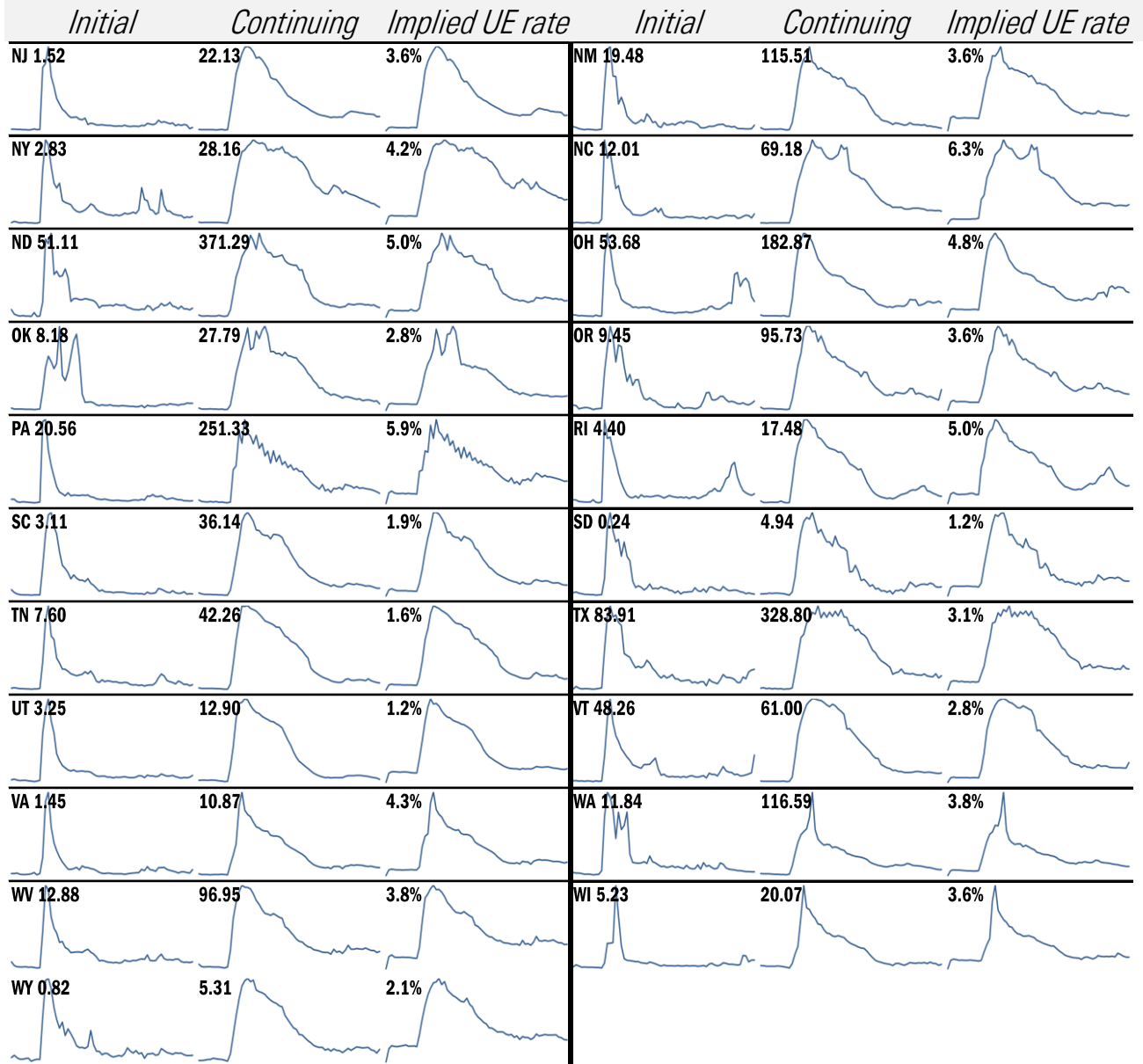
Donald Luskin: 312 273 6766 don@trendmacro.com
 Thomas Demas: 704 552 3625 tdemas@trendmacro.com

State by state unemployment insurance claims (thousands)



Source: Department of Labor, TrendMacro calculations

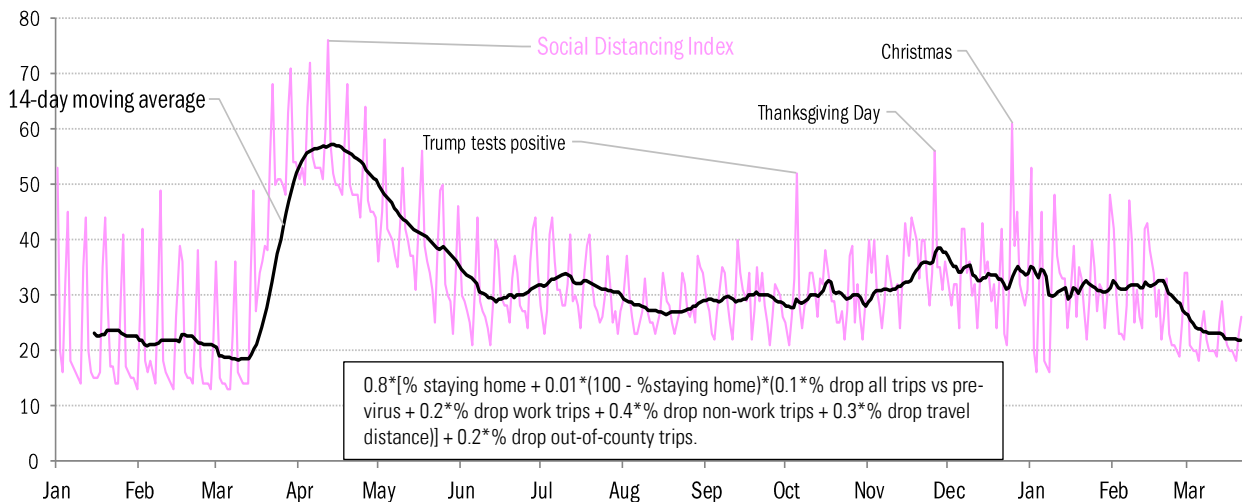
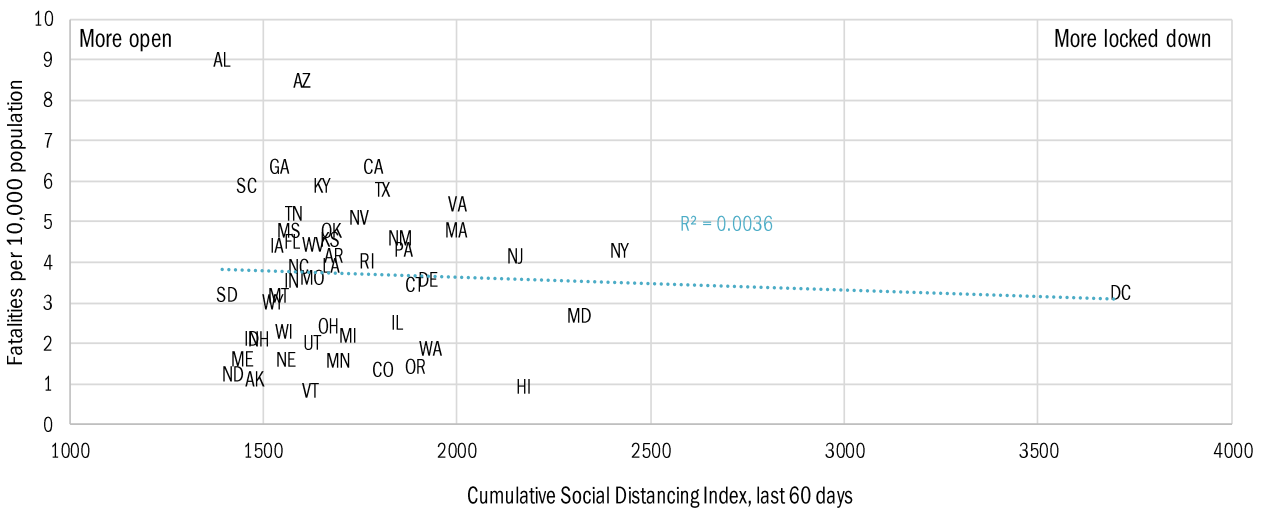
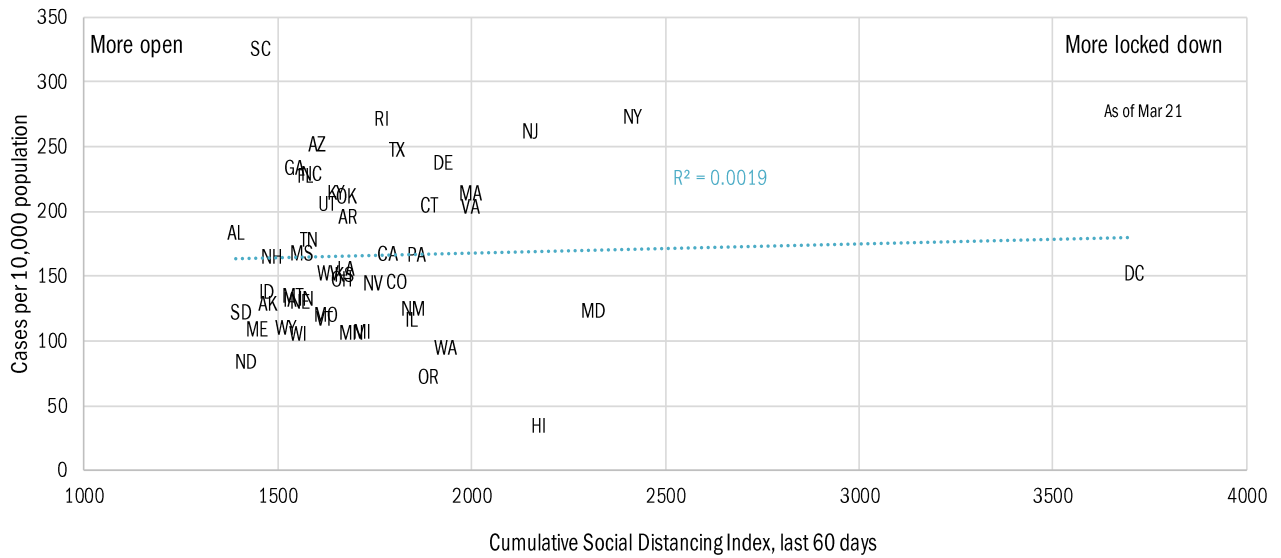
State by state unemployment insurance claims (thousands)



Source: Department of Labor, TrendMacro calculations

Locking down in the "dark winter"

Covid-2019 fatalities and cases vs social distancing measured by cell-phone mobility data

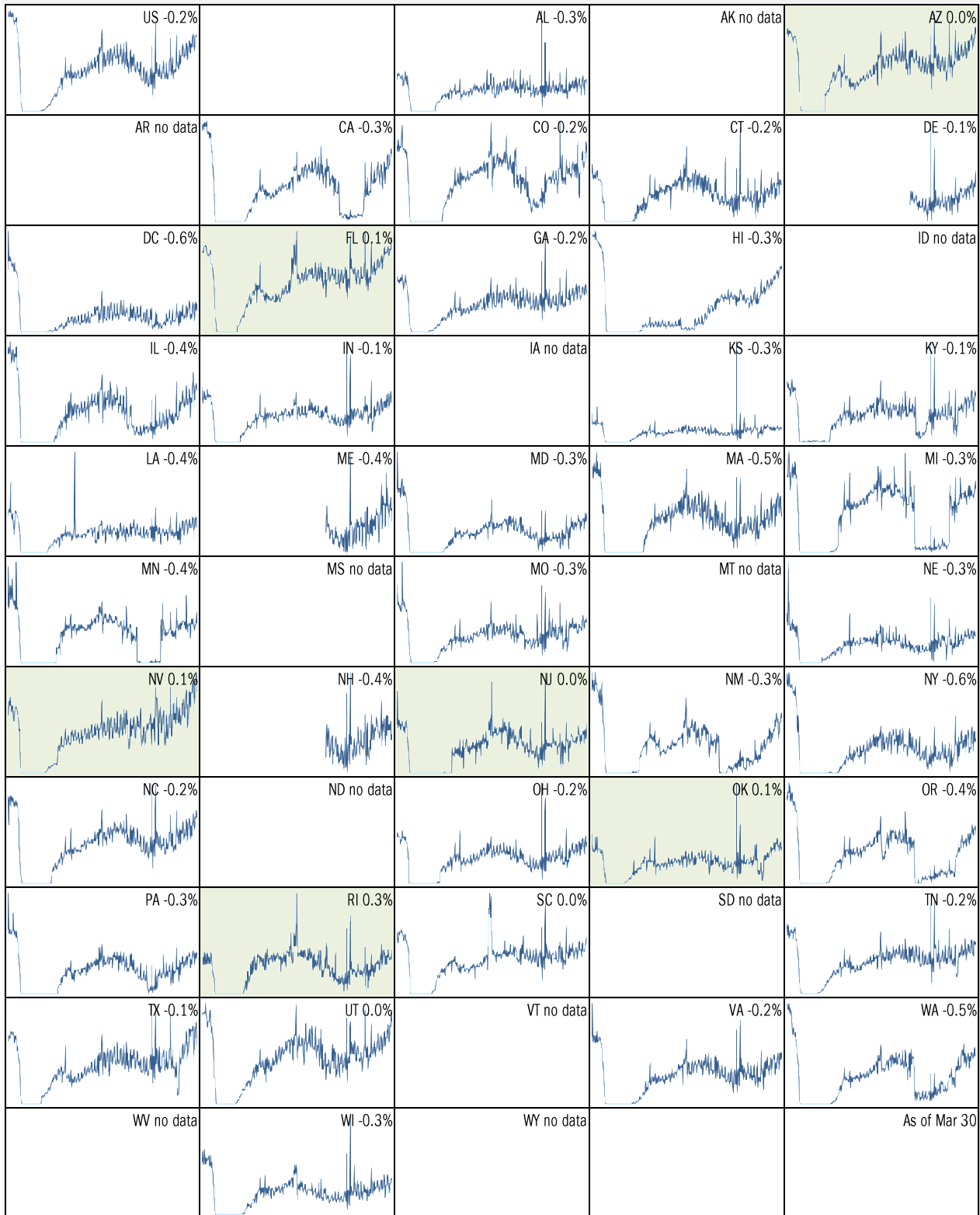


Source: [University of Maryland COVID-19 Impact Analysis Platform](#), TrendMacro calculations

Make America eat again:

Seated diners in restaurants compared to 2019, Feb 18 to present

■ Positive



Source: [Open Table](#), TrendMacro calculations

Make America move again: Mobility from Feb 5 vs Jan 3 – Feb 6 baseline Positive

	<i>Retail/rec</i>	<i>Grocery/pharm</i>	<i>Parks</i>	<i>Transit stations</i>	<i>Workplaces</i>	<i>Time at home</i>
US -8		-4	4	-27	-26	7
AL +0		3	5	3	-19	5
AK +1		-1	14	-14	-19	6
AZ -5		-6	-3	-8	-29	7
AR +11		6	63	11	-17	2
CA -22		-11	-15	-40	-33	10
CO -15		-7	-11	-27	-33	10
CT -11		-9	17	-28	-24	9
DE -4		-2	0	-29	-24	8
DC -49		-24	-35	-67	-47	15
FL -7		-4	-7	-21	-27	6
GA -4		-2	12	-19	-24	6
HI -24		-14	-36	-46	-33	10
ID +8		7	58	9	-17	3
IL -13		-5	9	-31	-26	8

Source: [Google Mobility Reports](https://www.google.com/covid19/mobility/), TrendMacro calculations

Make America move again: Mobility from Feb 5 vs Jan 3 – Feb 6 baseline ■ Positive

	<i>Retail/rec</i>	<i>Grocery/pharm</i>	<i>Parks</i>	<i>Transit stations</i>	<i>Workplaces</i>	<i>Residential</i>
IN +1		-1	41	1	-19	4
IA +2		11	30	-9	-21	5
KS +1		-3	43	10	-23	5
KY +1		5	52	1	-20	4
LA +0		3	-4	-5	-20	4
ME -2		2	28	-22	-20	6
MD -15		-8	23	-37	-31	11
MA -20		-13	10	-51	-31	11
MI -8		-4	52	-19	-22	7
MN -11		-6	11	-28	-25	9
MS +8		0	6	22	-22	3
MO +5		2	34	0	-20	4
MT +8		10	26	14	-15	3
NE +4		1	25	-2	-18	5
NV -7		-2	-11	-24	-27	7

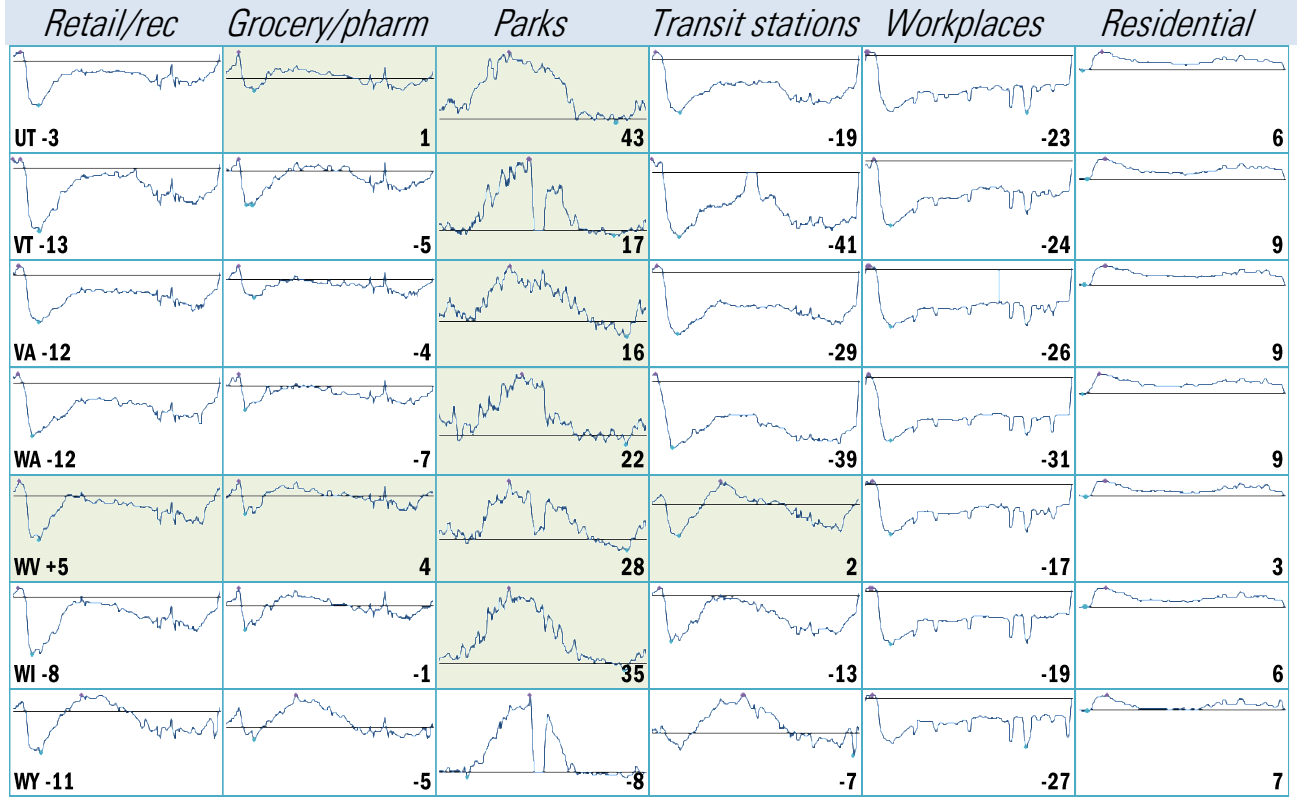
Source: [Google Mobility Reports](https://www.google.com/covid19/mobility/), TrendMacro calculations

Make America move again: Mobility from Feb 5 vs Jan 3 – Feb 6 baseline ■ Positive

	<i>Retail/rec</i>	<i>Grocery/pharm</i>	<i>Parks</i>	<i>Transit stations</i>	<i>Workplaces</i>	<i>Residential</i>
NH -6		-2	25	-22	-21	8
NJ -17		-6	25	-39	-30	10
NM -6		-1	8	3	-29	6
NY -23		-10	-7	-44	-30	10
NC -7		-1	4	-23	-24	7
ND -0		-8	7	-9	-18	4
OH -3		-2	59	-9	-20	5
OK +8		4	34	17	-25	4
OR -10		-4	23	-25	-28	7
PA -9		-4	23	-30	-24	8
RI -13		-9	50	-35	-25	8
SC +3		1	5	5	-19	5
SD +6		11	25	13	-15	5
TN +3		1	39	-3	-21	4
TX -2		-4	14	-11	-29	6

Source: [Google Mobility Reports](https://www.google.com/covid19/mobility/), TrendMacro calculations

Make America move again: Mobility from Feb 5 vs Jan 3 – Feb 6 baseline ■ Positive



Source: [Google Mobility Reports](https://www.google.com/covid19/mobility/), TrendMacro calculations