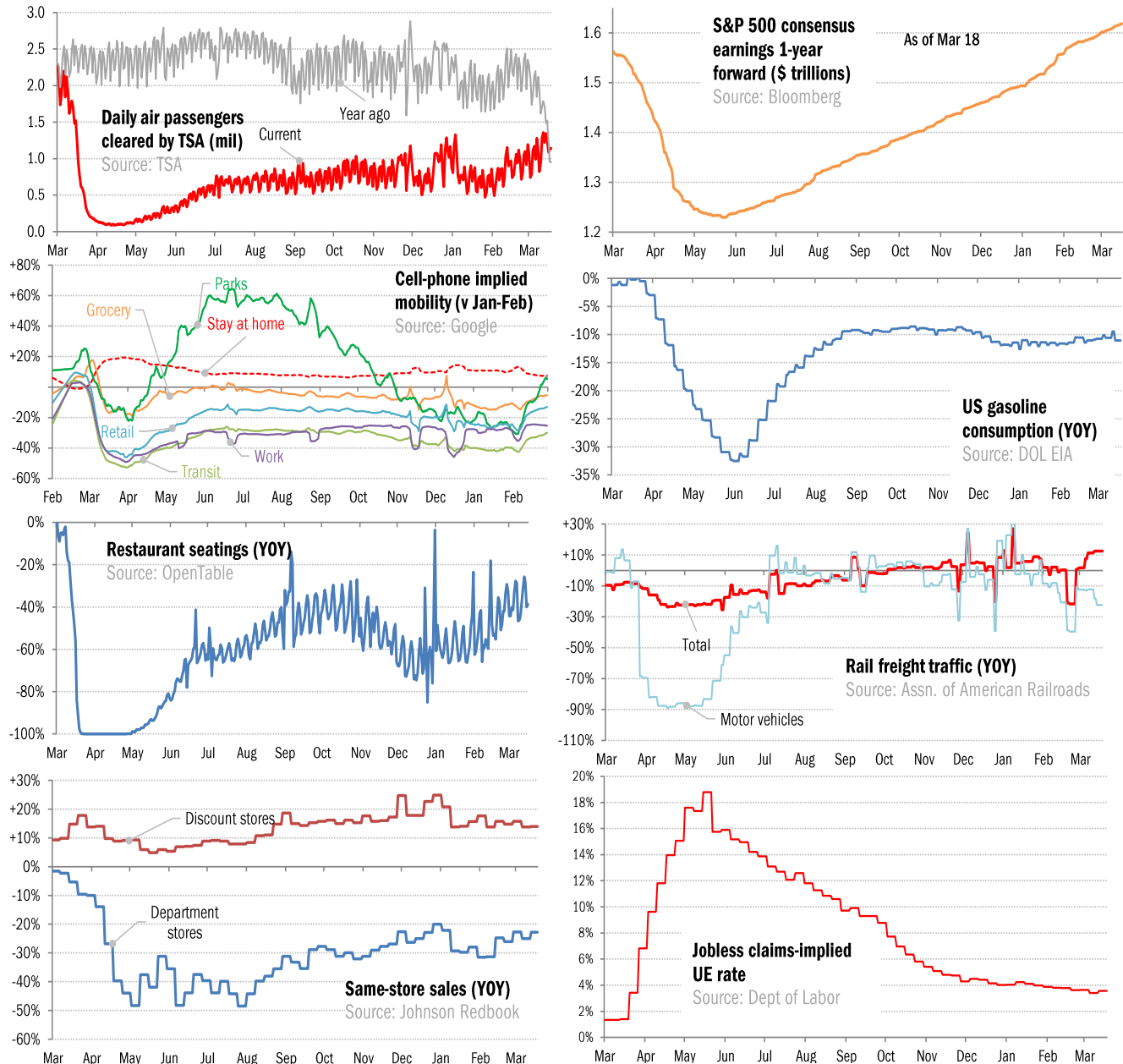


## Data Insights: High-Frequency Post-Virus US Recovery Monitor

Thursday, March 18, 2021

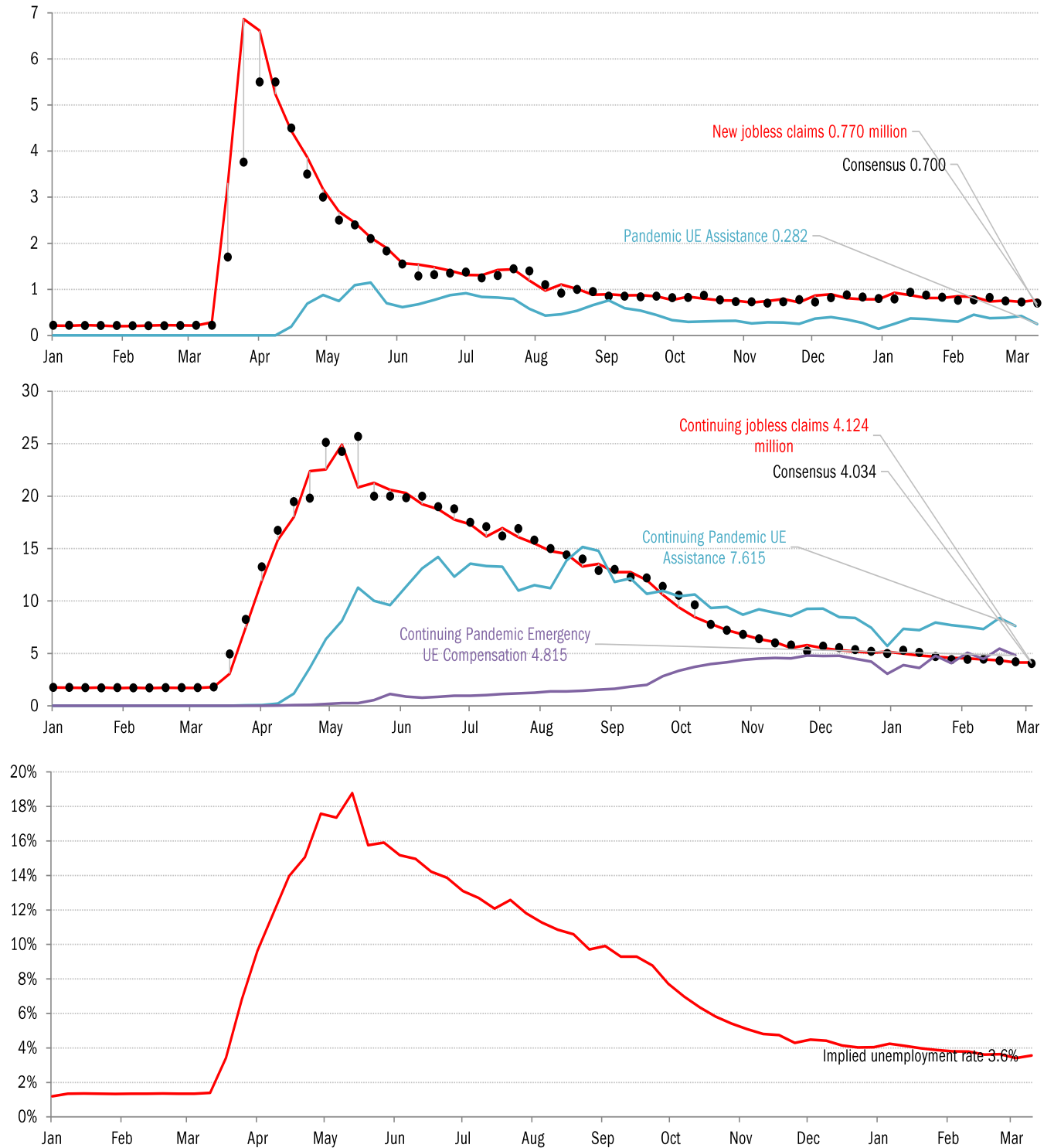
### The US high-frequency macro data dashboard

(state level and other detail in subsequent charts)



Source: As indicated, TrendMacro calculations

## High-frequency view of the US labor market: weekly unemployment claims (millions)

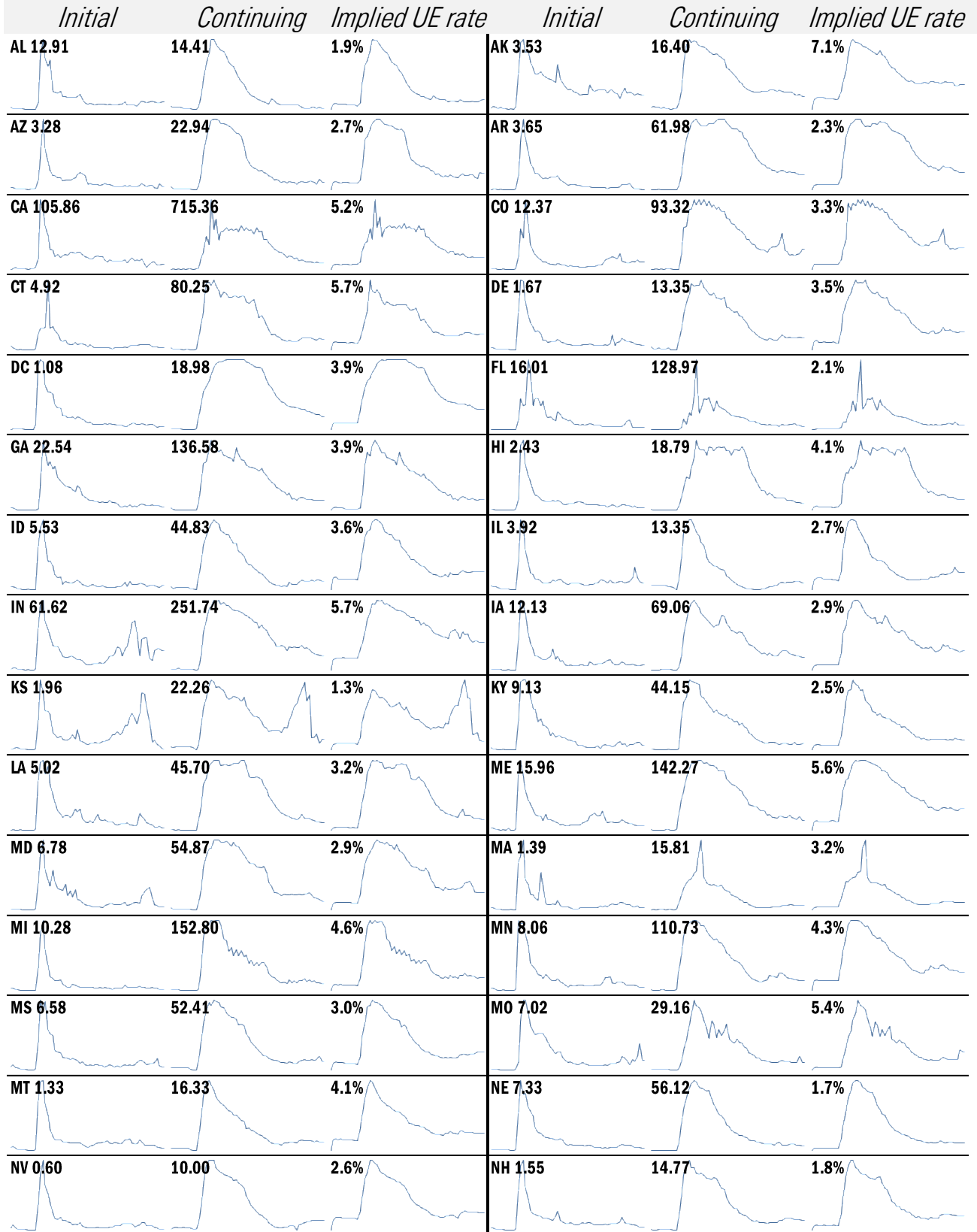


Source: Department of Labor, Bloomberg, TrendMacro calculations

### For more information contact us:

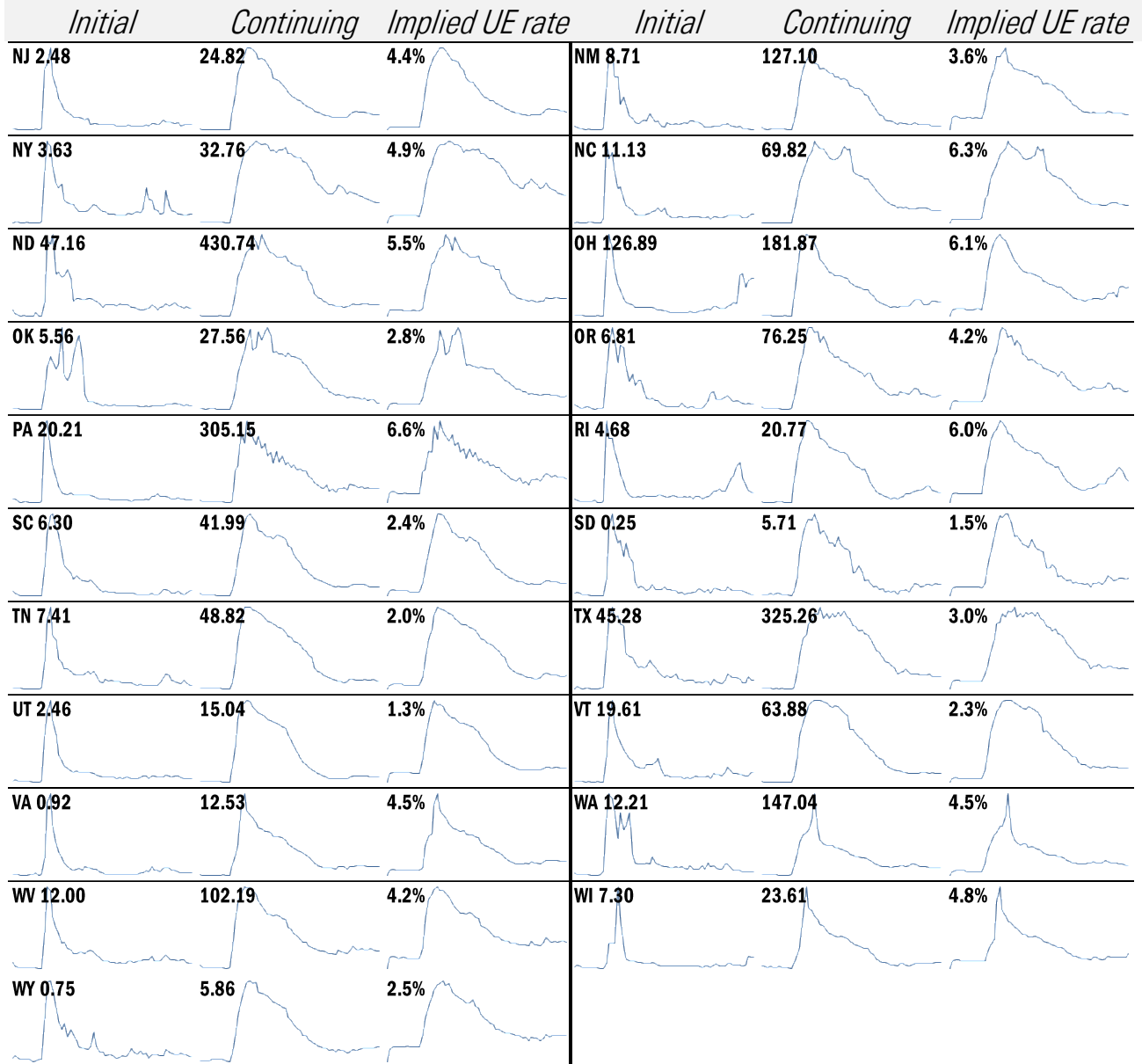
Donald Luskin: 312 273 6766 [don@trendmacro.com](mailto:don@trendmacro.com)  
 Thomas Demas: 704 552 3625 [tdemas@trendmacro.com](mailto:tdemas@trendmacro.com)

# State by state unemployment insurance claims (thousands)



Source: Department of Labor, TrendMacro calculations

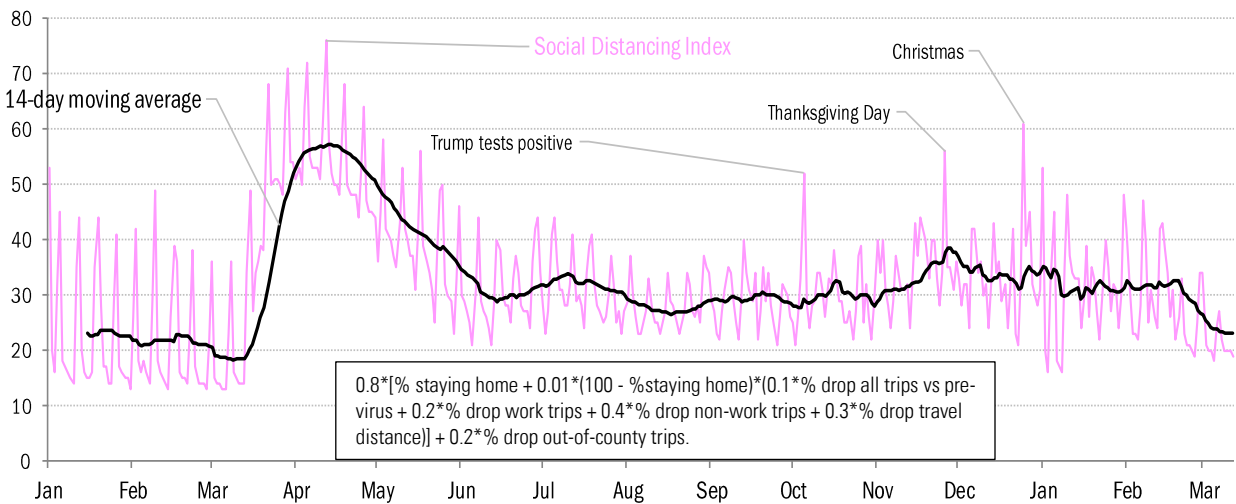
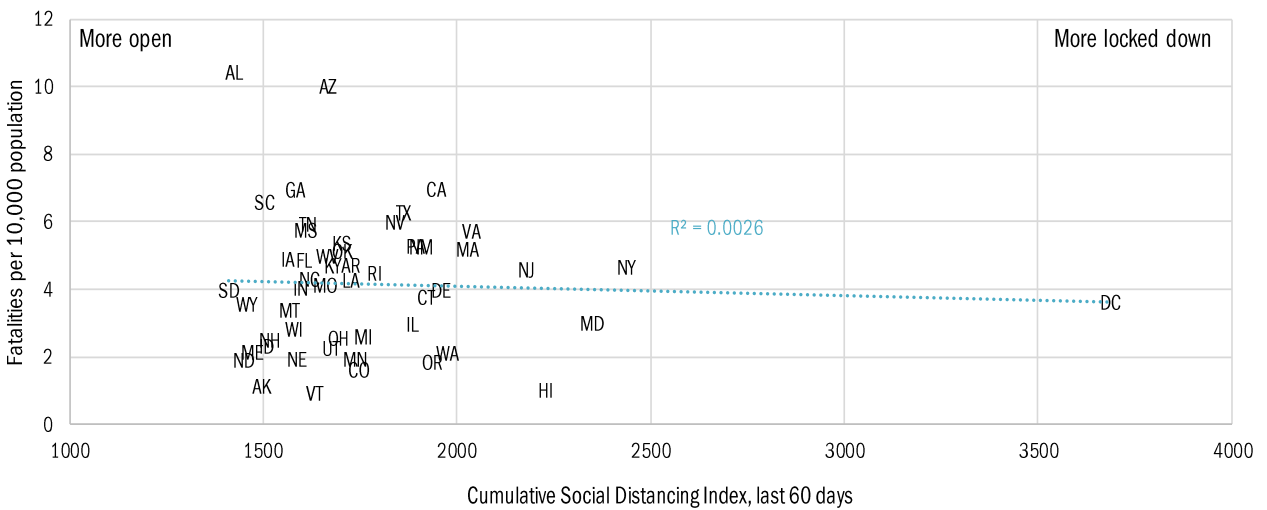
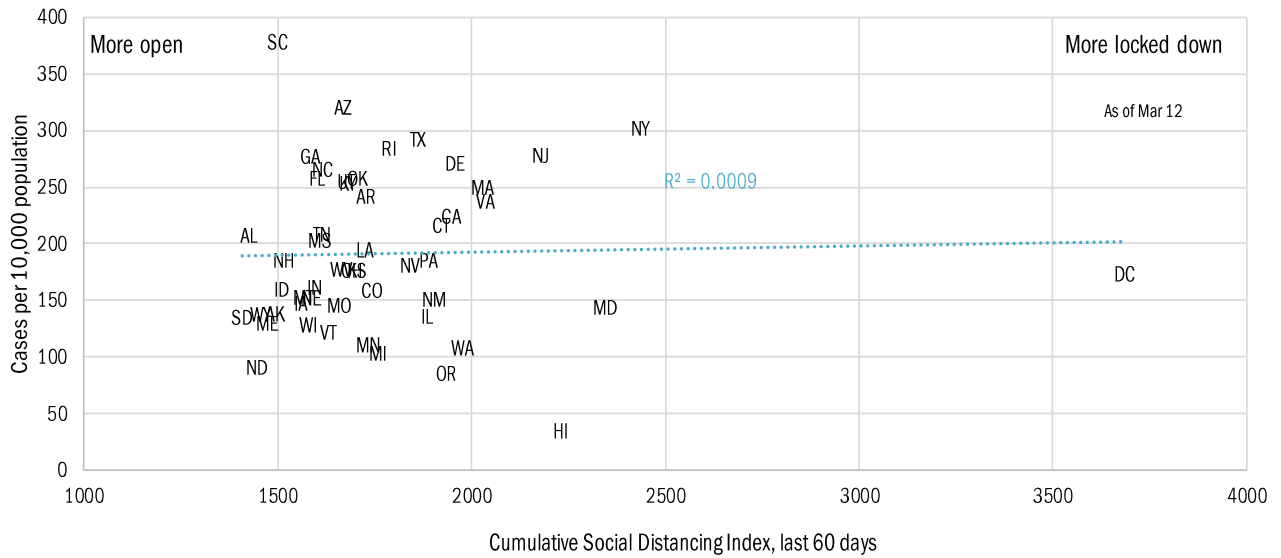
## State by state unemployment insurance claims (thousands)



Source: Department of Labor, TrendMacro calculations

# Locking down in the "dark winter"

## Covid-2019 fatalities and cases vs social distancing measured by cell-phone mobility data

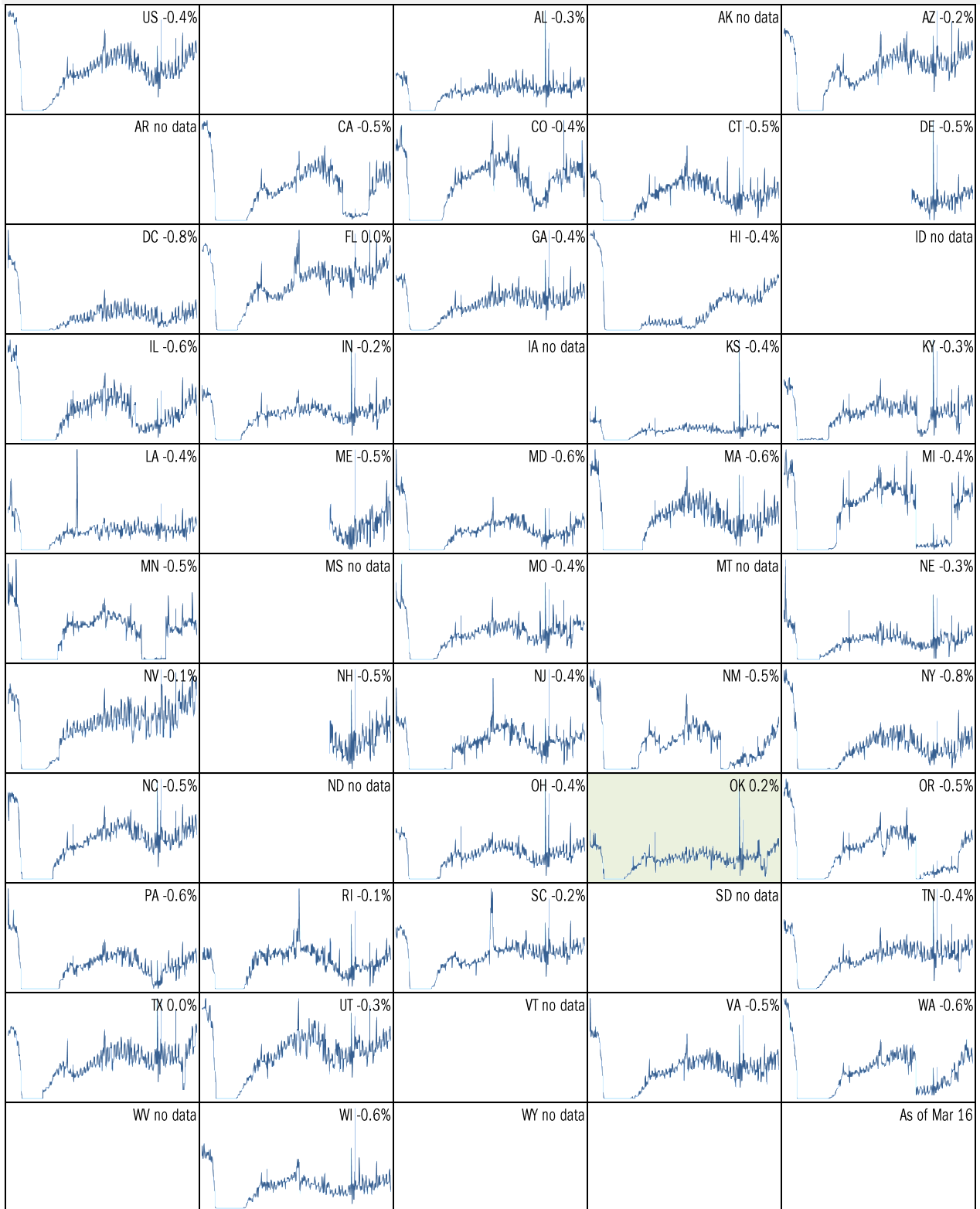


Source: [University of Maryland COVID-19 Impact Analysis Platform](https://www.um.edu.edu/impact-analysis), TrendMacro calculations

# Make America eat again:

Seated diners in restaurants compared to 2019, Feb 18 to present

■ Positive



Source: [Open Table](#), TrendMacro calculations

Make America move again: Mobility from Feb 5 vs Jan 3 – Feb 6 baseline ■ Positive

	<i>Retail/rec</i>	<i>Grocery/pharm</i>	<i>Parks</i>	<i>Transit stations</i>	<i>Workplaces</i>	<i>Time at home</i>
<b>US -13</b>		-6	5	-30	-25	7
<b>AL -3</b>		2	24	1	-17	4
<b>AK -6</b>		-3	13	-18	-24	7
<b>AZ -12</b>		-8	-16	-13	-29	8
<b>AR 0</b>		2	39	4	-17	4
<b>CA -26</b>		-13	-23	-44	-34	12
<b>CO -28</b>		-9	-20	-41	-36	12
<b>CT -14</b>		-10	25	-30	-24	9
<b>DE -6</b>		-3	25	-26	-24	7
<b>DC -48</b>		-21	-26	-66	-47	15
<b>FL -12</b>		-6	-8	-25	-24	6
<b>GA -8</b>		-3	38	-21	-24	6
<b>HI -29</b>		-18	-44	-48	-30	11
<b>ID +1</b>		4	61	1	-16	4
<b>IL -15</b>		-5	17	-32	-25	8

Source: [Google Mobility Reports](https://www.google.com/covid19/mobility/), TrendMacro calculations

Make America move again: Mobility from Feb 5 vs Jan 3 – Feb 6 baseline ■ Positive

	<i>Retail/rec</i>	<i>Grocery/pharm</i>	<i>Parks</i>	<i>Transit stations</i>	<i>Workplaces</i>	<i>Residential</i>
<b>IN -5</b>		-3	46	-3	-19	5
<b>IA -2</b>		11	39	-10	-16	5
<b>KS -7</b>		-5	25	3	-19	6
<b>KY -8</b>		1	41	-4	-21	5
<b>LA -7</b>		1	-1	-9	-19	4
<b>ME -7</b>		0	22	-24	-21	7
<b>MD -16</b>		-8	52	-38	-31	10
<b>MA -22</b>		-13	13	-52	-32	11
<b>MI -12</b>		-7	51	-22	-23	7
<b>MN -14</b>		-7	20	-30	-25	9
<b>MS +1</b>		-2	16	18	-18	3
<b>MO -3</b>		-2	17	-6	-18	5
<b>MT +0</b>		6	24	8	-15	4
<b>NE -5</b>		-4	24	-10	-21	6
<b>NV -14</b>		-6	-26	-30	-28	9

Source: [Google Mobility Reports](https://www.google.com/covid19/mobility/), TrendMacro calculations



Make America move again: Mobility from Feb 5 vs Jan 3 – Feb 6 baseline   Positive

	<i>Retail/rec</i>	<i>Grocery/pharm</i>	<i>Parks</i>	<i>Transit stations</i>	<i>Workplaces</i>	<i>Residential</i>
<b>NH -11</b>		-5	28	-25	-21	8
<b>NJ -18</b>		-6	47	-39	-30	10
<b>NM -15</b>		-6	-13	-6	-28	9
<b>NY -24</b>		-10	0	-44	-30	10
<b>NC -10</b>		-1	34	-23	-23	6
<b>ND -6</b>		-10	8	-11	-16	5
<b>OH -8</b>		-4	67	-12	-20	6
<b>OK -2</b>		2	10	7	-18	4
<b>OR -15</b>		-6	29	-29	-29	8
<b>PA -12</b>		-5	38	-31	-24	8
<b>RI -15</b>		-9	72	-39	-25	8
<b>SC -1</b>		1	29	3	-19	4
<b>SD -2</b>		9	28	5	-14	5
<b>TN -4</b>		-1	32	-8	-20	5
<b>TX -10</b>		-7	-2	-17	-27	7

Source: [Google Mobility Reports](https://www.google.com/covid19/mobility/), TrendMacro calculations

Make America move again: Mobility from Feb 5 vs Jan 3 – Feb 6 baseline ■ Positive

	<i>Retail/rec</i>	<i>Grocery/pharm</i>	<i>Parks</i>	<i>Transit stations</i>	<i>Workplaces</i>	<i>Residential</i>
<b>UT -9</b>		-2	20	-25	-25	7
<b>VT -18</b>		-8	11	-42	-25	9
<b>VA -14</b>		-5	43	-30	-27	8
<b>WA -17</b>		-9	35	-40	-31	9
<b>WV -4</b>		1	28	-2	-17	4
<b>WI -12</b>		-2	40	-16	-18	7
<b>WY -19</b>		-9	-8	-14	-20	6

Source: [Google Mobility Reports](https://www.google.com/covid19/mobility/), TrendMacro calculations