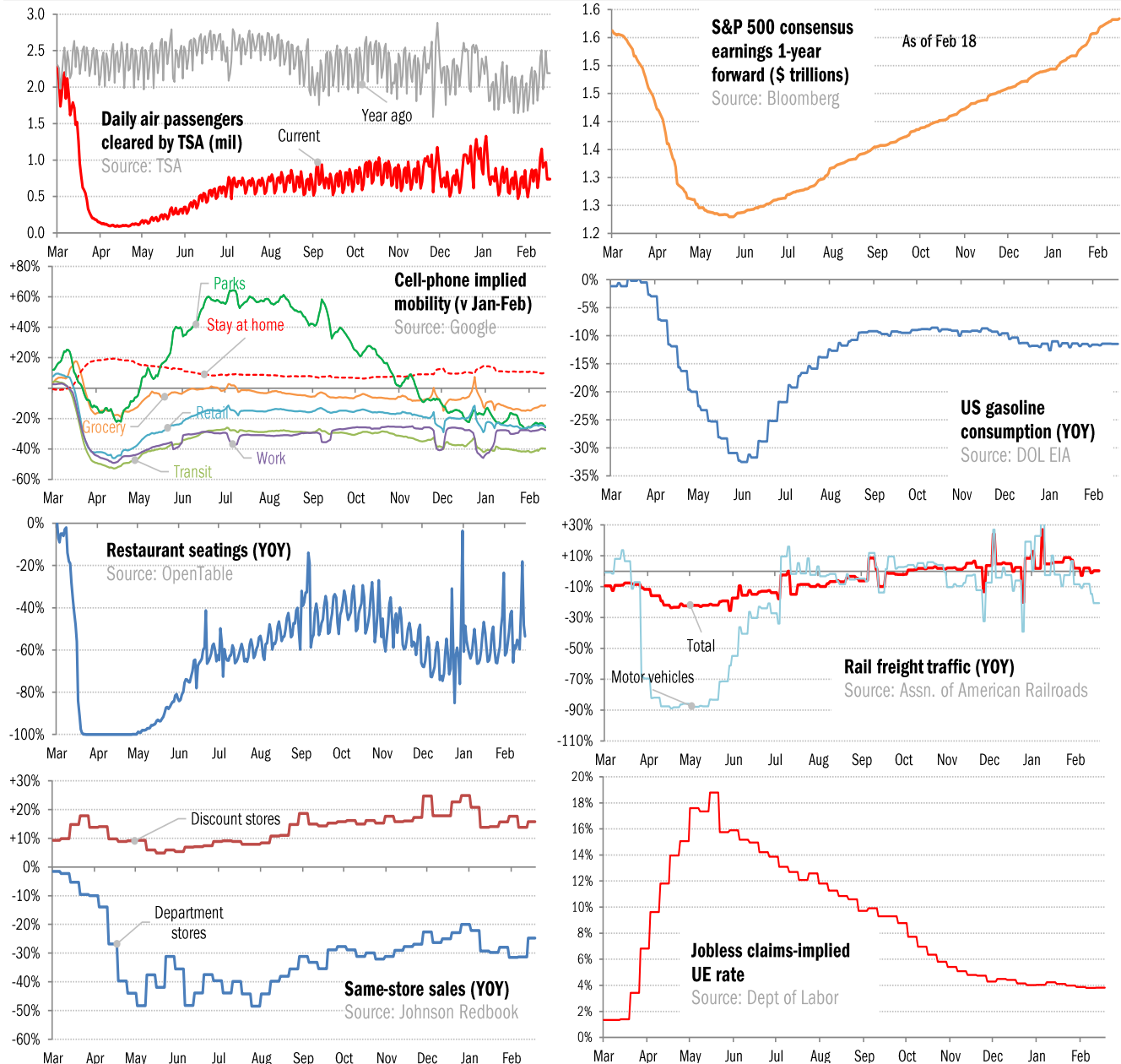


## Data Insights: High-Frequency Post-Virus US Recovery Monitor

Thursday, February 18, 2021

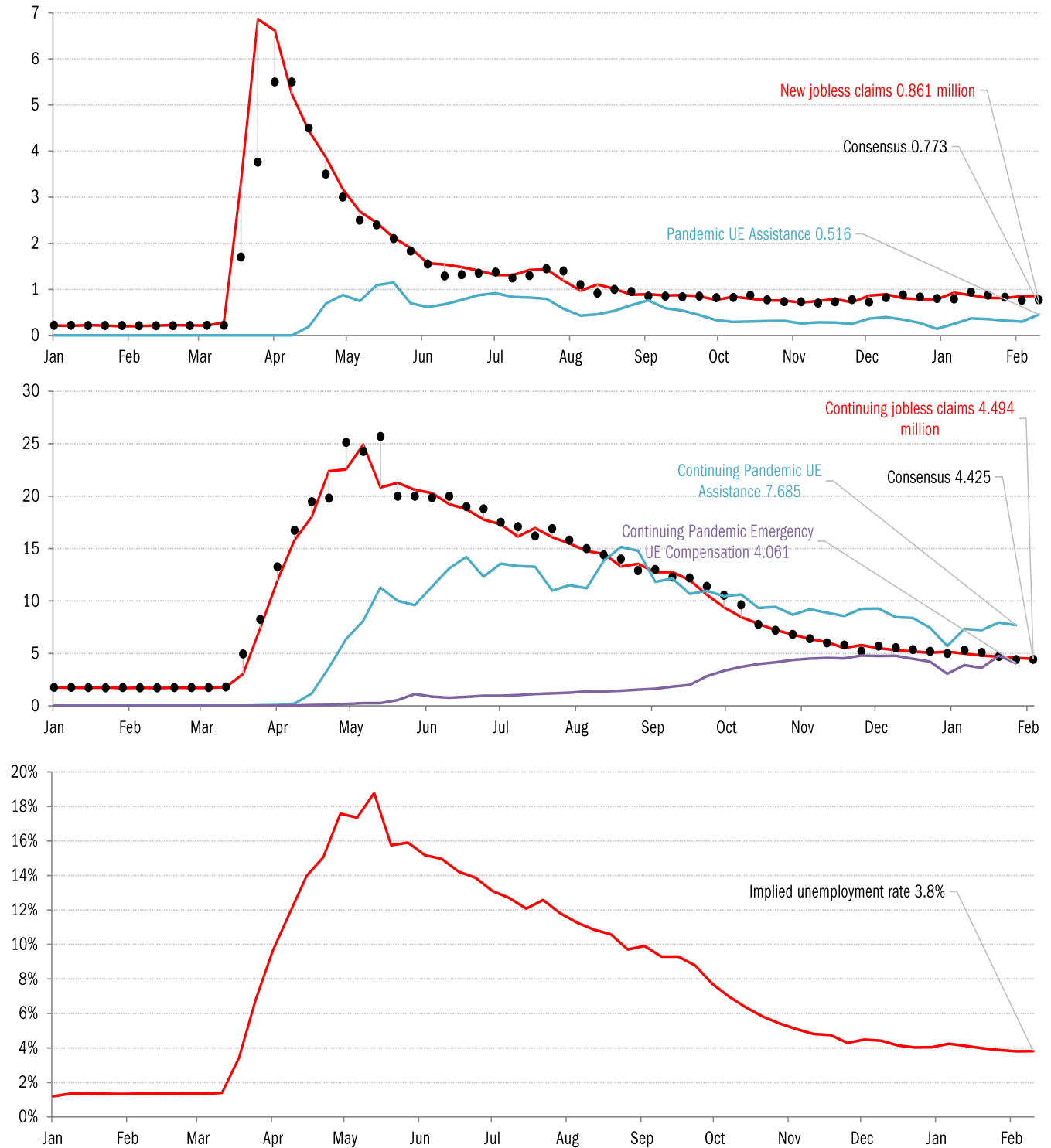
### The US high-frequency macro data dashboard

(state level and other detail in subsequent charts)



Source: As indicated, TrendMacro calculations

## High-frequency view of the US labor market: weekly unemployment claims (millions)

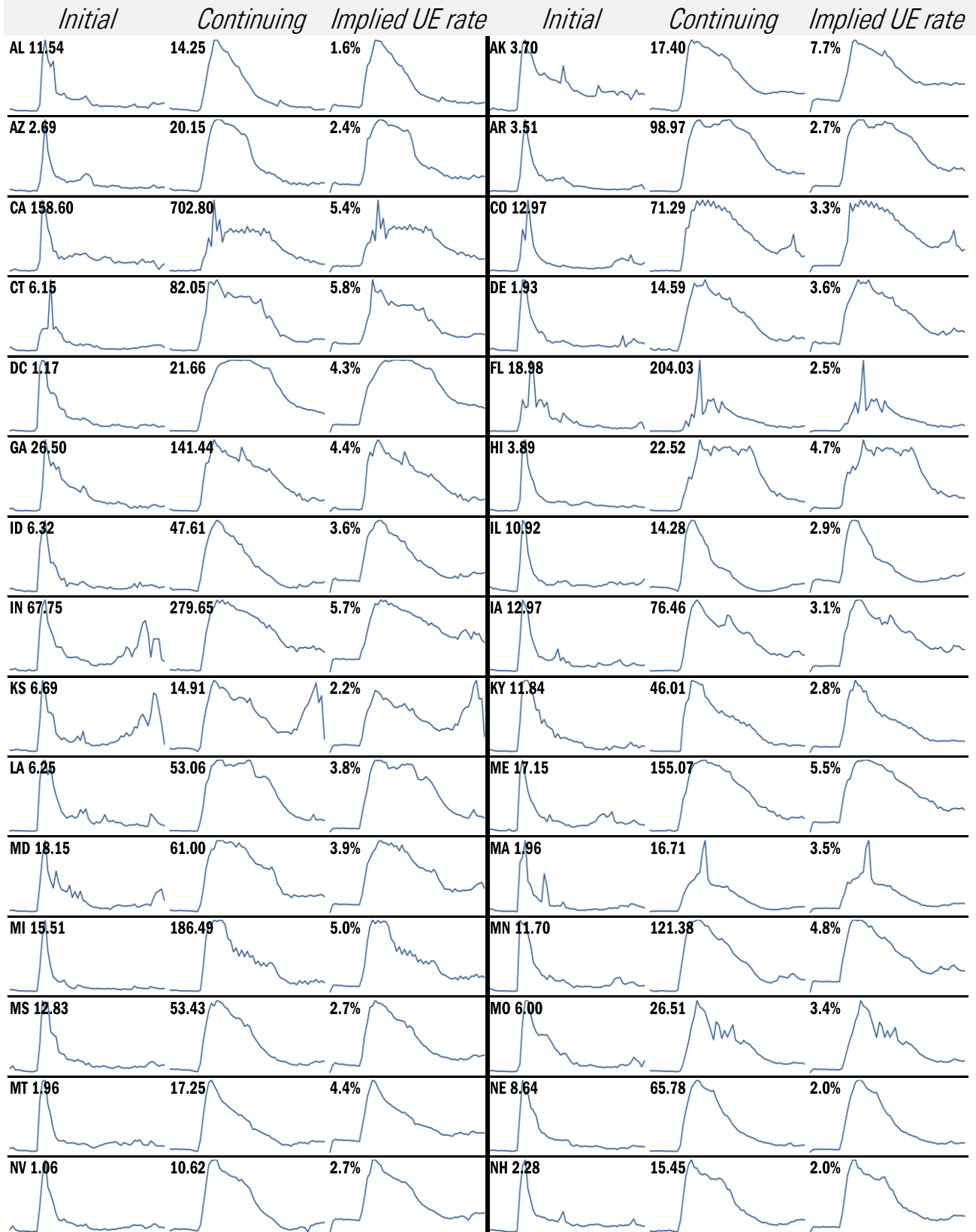


Source: Department of Labor, Bloomberg, TrendMacro calculations

### For more information contact us:

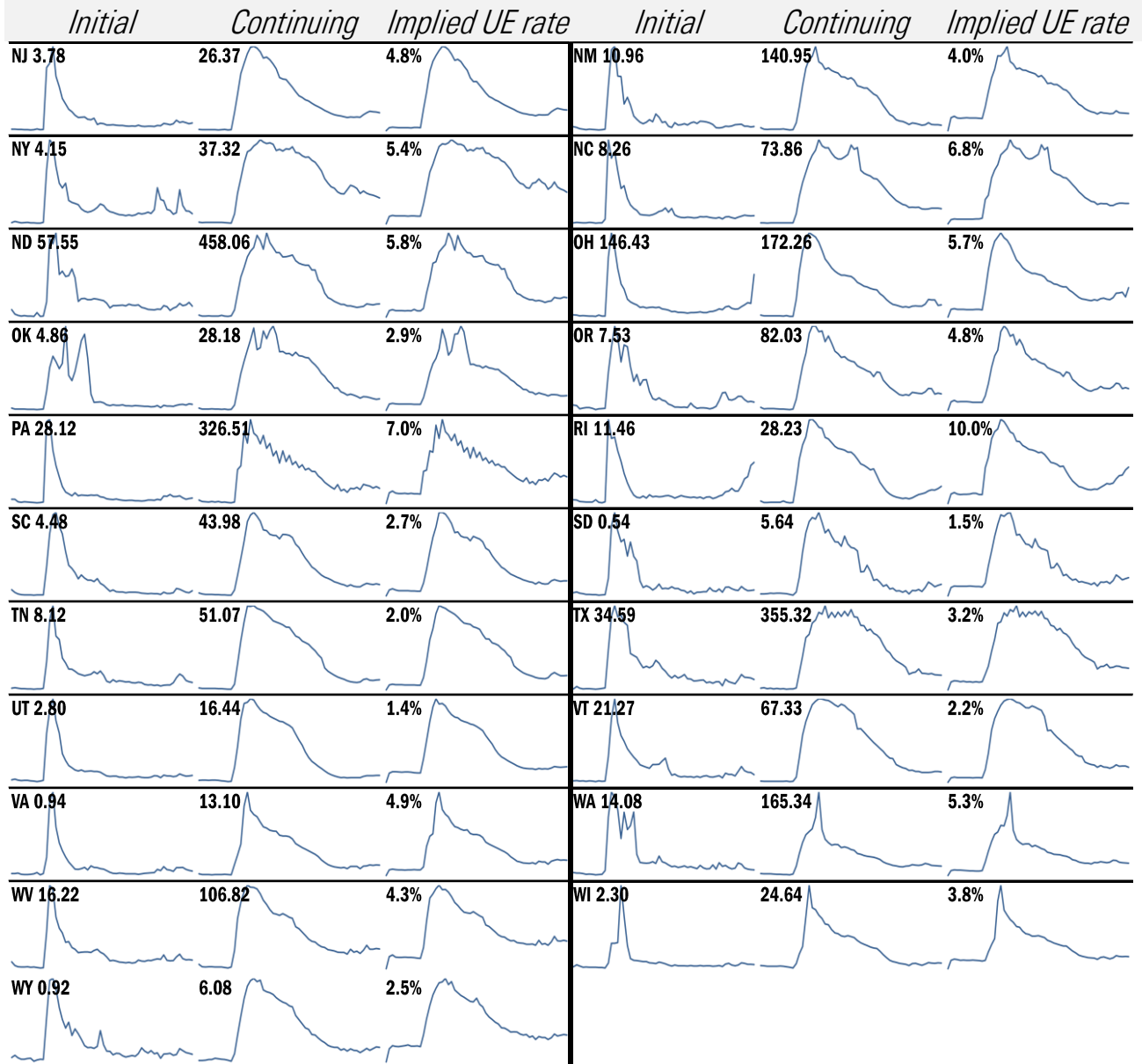
Donald Luskin: 312 273 6766 [don@trendmacro.com](mailto:don@trendmacro.com)  
 Thomas Demas: 704 552 3625 [tdemas@trendmacro.com](mailto:tdemas@trendmacro.com)

# State by state unemployment insurance claims (thousands)



Source: Department of Labor, TrendMacro calculations

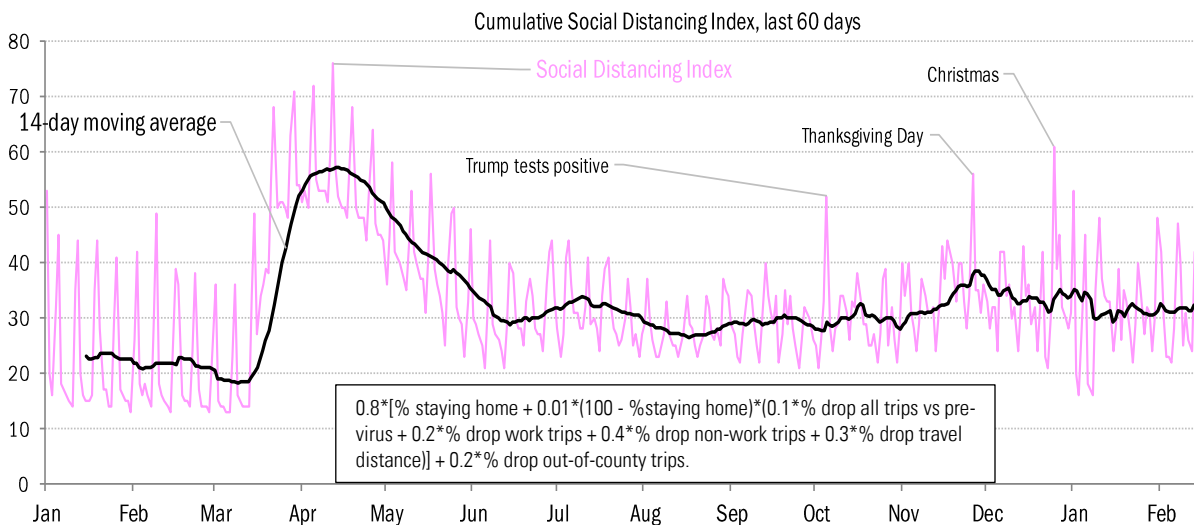
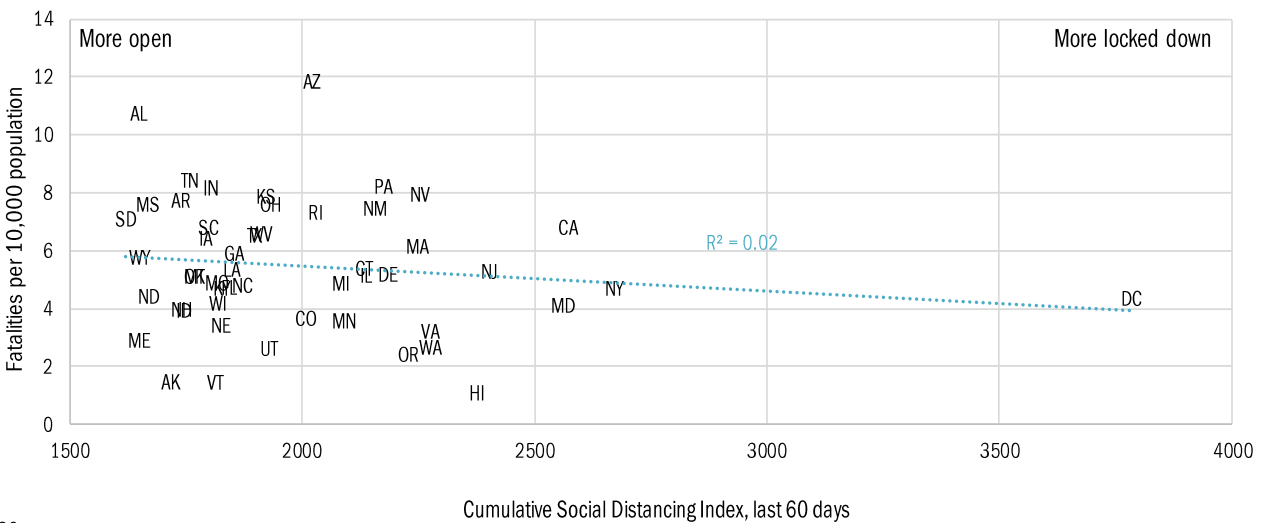
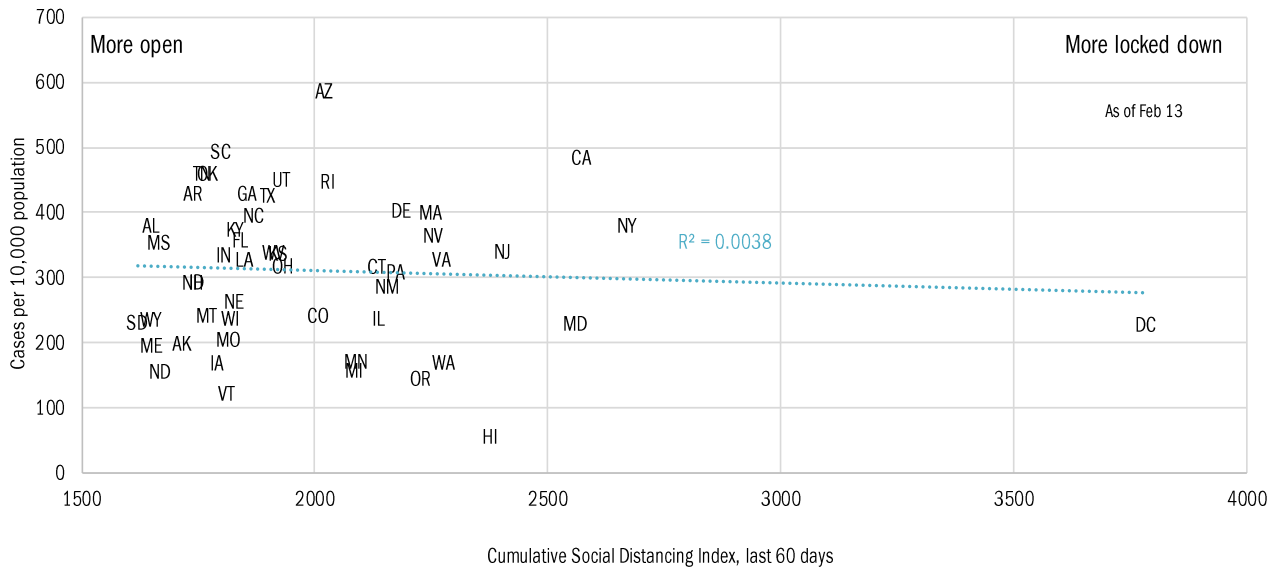
# State by state unemployment insurance claims (thousands)



Source: Department of Labor, TrendMacro calculations

# Locking down in the "dark winter"

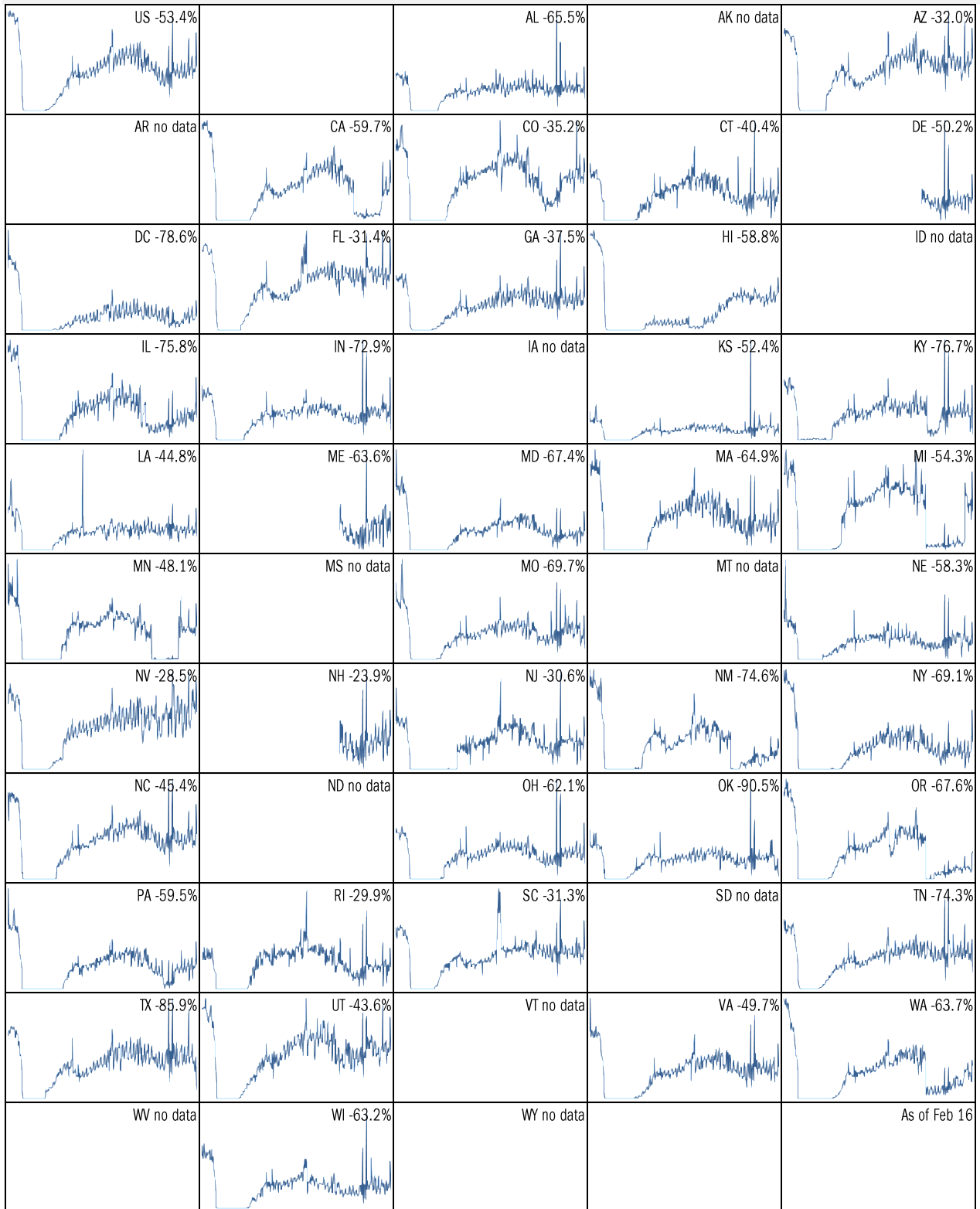
## Covid-2019 fatalities and cases vs social distancing measured by cell-phone mobility data



Source: [University of Maryland COVID-19 Impact Analysis Platform](#), TrendMacro calculations

# Make America eat again:

YOY change in seated diners in restaurants Feb 18 to present ■ Positive



Source: [Open Table](#), TrendMacro calculations

Make America move again: Mobility from Feb 5 vs Jan 3 – Feb 6 baseline ■ Positive

	<i>Retail/rec</i>	<i>Grocery/pharm</i>	<i>Parks</i>	<i>Transit stations</i>	<i>Workplaces</i>	<i>Time at home</i>
<b>US -25</b>		<b>-11</b>	<b>-26</b>	<b>-40</b>	<b>-28</b>	<b>10</b>
<b>AL -16</b>		<b>-5</b>	<b>-18</b>	<b>-17</b>	<b>-19</b>	<b>7</b>
<b>AK -17</b>		<b>-9</b>	<b>-2</b>	<b>-31</b>	<b>-21</b>	<b>9</b>
<b>AZ -20</b>		<b>-11</b>	<b>-19</b>	<b>-23</b>	<b>-28</b>	<b>9</b>
<b>AR -21</b>		<b>-7</b>	<b>-24</b>	<b>-16</b>	<b>-26</b>	<b>11</b>
<b>CA -31</b>		<b>-14</b>	<b>-22</b>	<b>-48</b>	<b>-35</b>	<b>12</b>
<b>CO -26</b>		<b>-10</b>	<b>-26</b>	<b>-41</b>	<b>-28</b>	<b>11</b>
<b>CT -29</b>		<b>-16</b>	<b>-27</b>	<b>-42</b>	<b>-29</b>	<b>12</b>
<b>DE -23</b>		<b>-12</b>	<b>-31</b>	<b>-44</b>	<b>-29</b>	<b>11</b>
<b>DC -56</b>		<b>-27</b>	<b>-55</b>	<b>-71</b>	<b>-50</b>	<b>18</b>
<b>FL -20</b>		<b>-11</b>	<b>-24</b>	<b>-35</b>	<b>-24</b>	<b>7</b>
<b>GA -19</b>		<b>-9</b>	<b>-17</b>	<b>-33</b>	<b>-25</b>	<b>9</b>
<b>HI -34</b>		<b>-21</b>	<b>-41</b>	<b>-55</b>	<b>-31</b>	<b>11</b>
<b>ID -11</b>		<b>-1</b>	<b>11</b>	<b>-13</b>	<b>-17</b>	<b>6</b>
<b>IL -31</b>		<b>-14</b>	<b>-46</b>	<b>-45</b>	<b>-29</b>	<b>12</b>

Source: [Google Mobility Reports](https://www.google.com/covid19/mobility/), TrendMacro calculations

Make America move again: Mobility from Feb 5 vs Jan 3 – Feb 6 baseline ■ Positive

	<i>Retail/rec</i>	<i>Grocery/pharm</i>	<i>Parks</i>	<i>Transit stations</i>	<i>Workplaces</i>	<i>Residential</i>
<b>IN -21</b>		-10	-21	-18	-21	9
<b>IA -21</b>		0	-30	-27	-17	9
<b>KS -28</b>		-13	-38	-19	-23	10
<b>KY -29</b>		-10	-19	-22	-30	12
<b>LA -19</b>		-5	-33	-23	-21	7
<b>ME -22</b>		-6	1	-35	-21	8
<b>MD -29</b>		-15	-27	-48	-34	14
<b>MA -34</b>		-18	-28	-58	-34	14
<b>MI -27</b>		-14	-13	-36	-25	10
<b>MN -28</b>		-17	-36	-47	-27	13
<b>MS -15</b>		-8	-22	-3	-19	7
<b>MO -27</b>		-13	-38	-25	-27	12
<b>MT -22</b>		-6	-27	-14	-17	8
<b>NE -25</b>		-12	-34	-26	-21	10
<b>NV -22</b>		-9	-27	-40	-29	9

Source: [Google Mobility Reports](https://www.google.com/covid19/mobility/), TrendMacro calculations

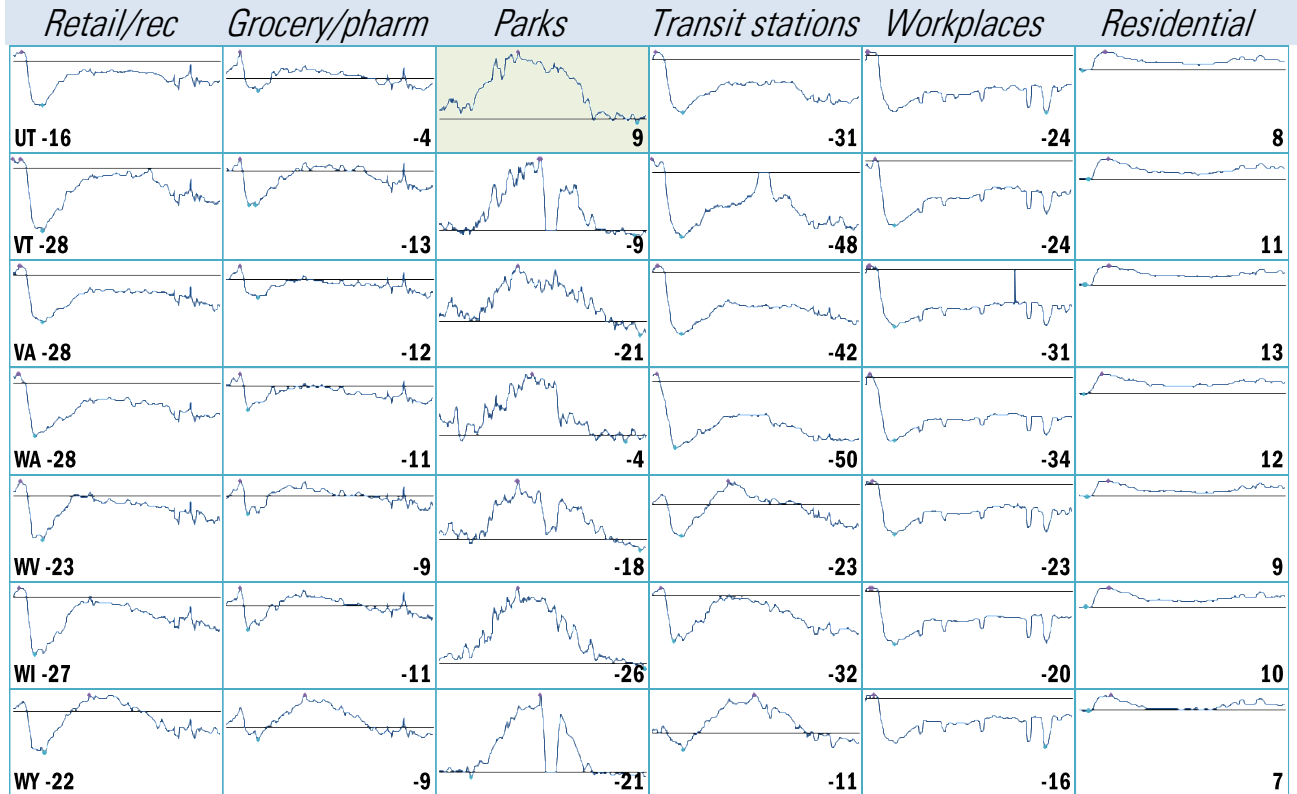


Make America move again: Mobility from Feb 5 vs Jan 3 – Feb 6 baseline ■ Positive

	<i>Retail/rec</i>	<i>Grocery/pharm</i>	<i>Parks</i>	<i>Transit stations</i>	<i>Workplaces</i>	<i>Residential</i>
<b>NH -23</b>						
		-9	-3	-34	-22	10
<b>NJ -31</b>						
		-14	-30	-49	-33	14
<b>NM -25</b>						
		-8	-13	-18	-29	10
<b>NY -37</b>						
		-15	-40	-50	-33	13
<b>NC -21</b>						
		-8	-15	-35	-25	9
<b>ND -21</b>						
		-17	-33	-28	-17	9
<b>OH -24</b>						
		-12	-16	-26	-23	10
<b>OK -26</b>						
		-8	-47	-19	-30	13
<b>OR -30</b>						
		-9	0	-40	-33	11
<b>PA -26</b>						
		-12	-32	-42	-27	11
<b>RI -29</b>						
		-14	-10	-52	-28	11
<b>SC -15</b>						
		-7	-21	-16	-20	7
<b>SD -16</b>						
		-2	-22	-13	-15	7
<b>TN -20</b>						
		-7	-14	-25	-22	8
<b>TX -22</b>						
		-10	-33	-31	-28	11

Source: [Google Mobility Reports](https://www.google.com/covid19/mobility/), TrendMacro calculations

Make America move again: Mobility from Feb 5 vs Jan 3 – Feb 6 baseline ■ Positive



Source: [Google Mobility Reports](https://www.google.com/covid19/mobility/), TrendMacro calculations