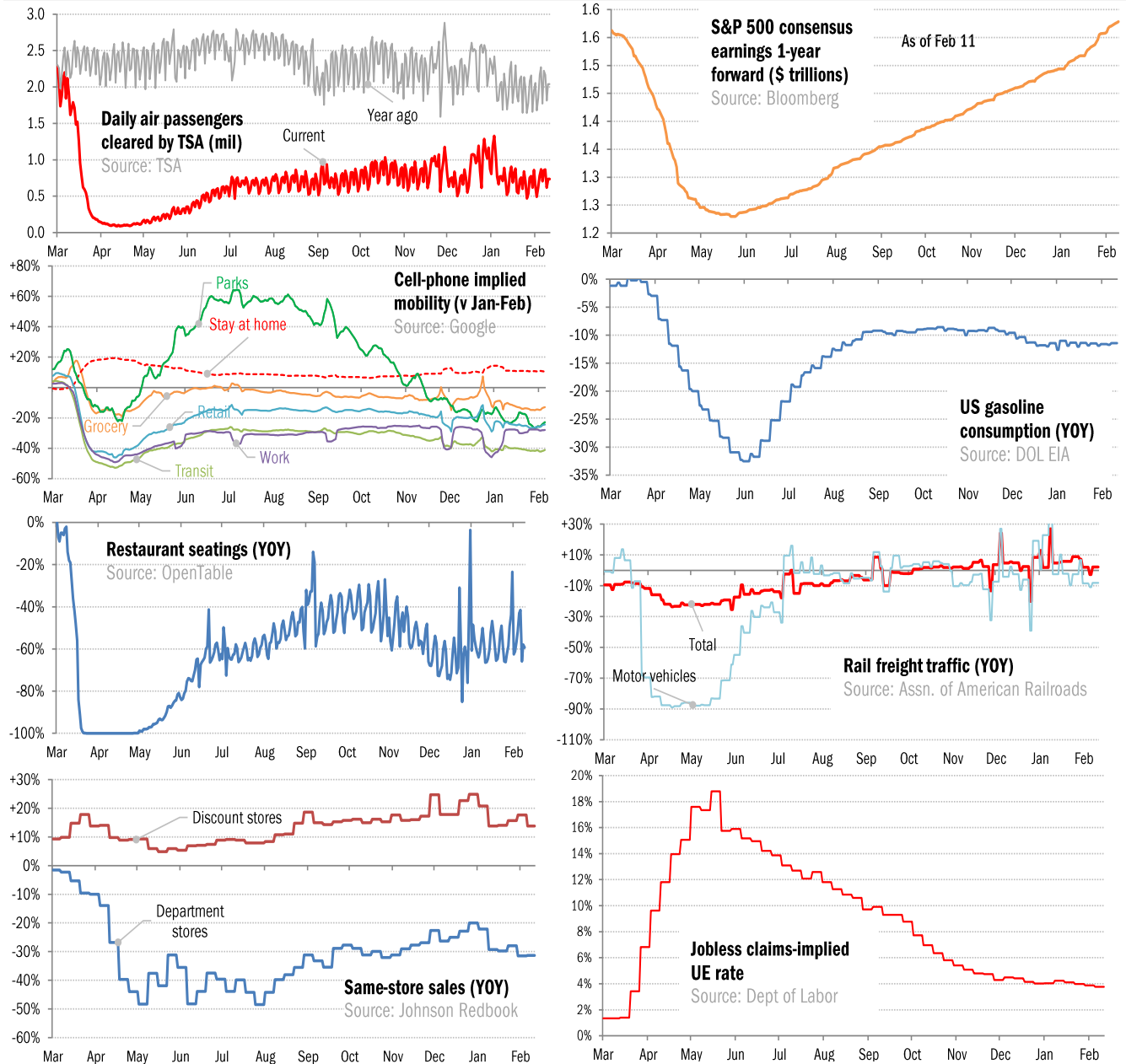


## Data Insights: High-Frequency Post-Virus US Recovery Monitor

Thursday, February 11, 2021

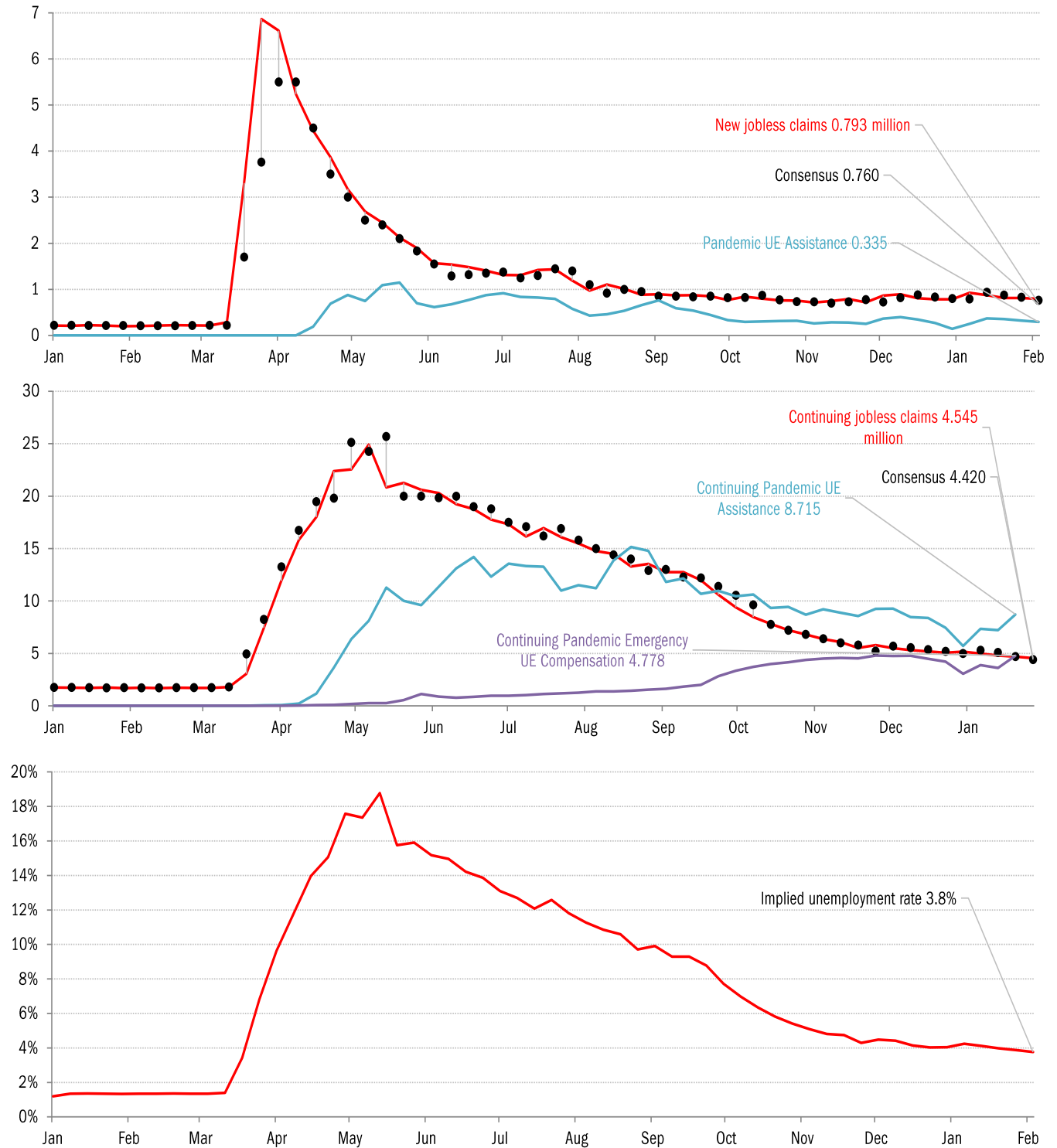
### The US high-frequency macro data dashboard

(state level and other detail in subsequent charts)



Source: As indicated, TrendMacro calculations

## High-frequency view of the US labor market: weekly unemployment claims (millions)



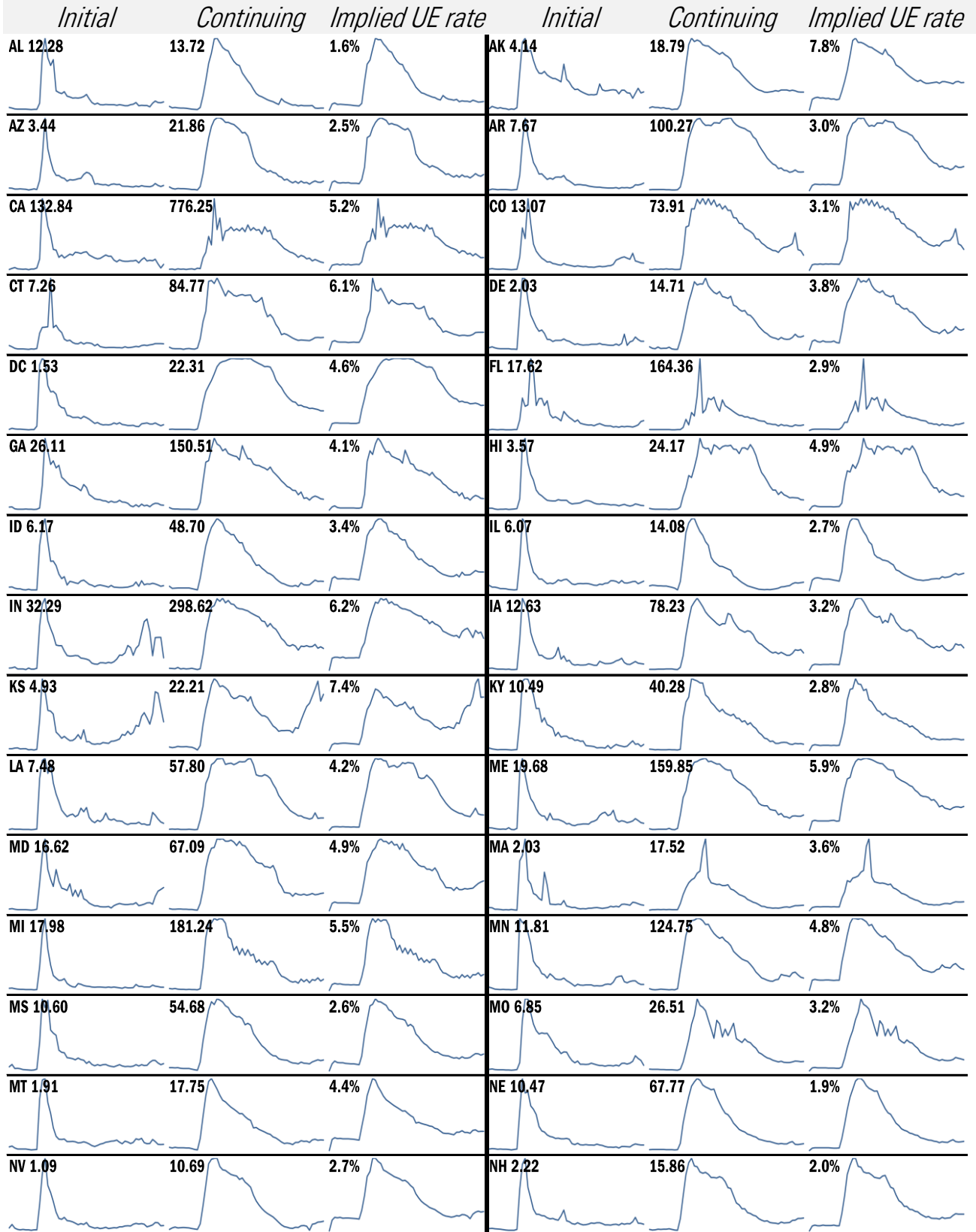
Source: Department of Labor, Bloomberg, TrendMacro calculations

### For more information contact us:

Donald Luskin: 312 273 6766 [don@trendmacro.com](mailto:don@trendmacro.com)

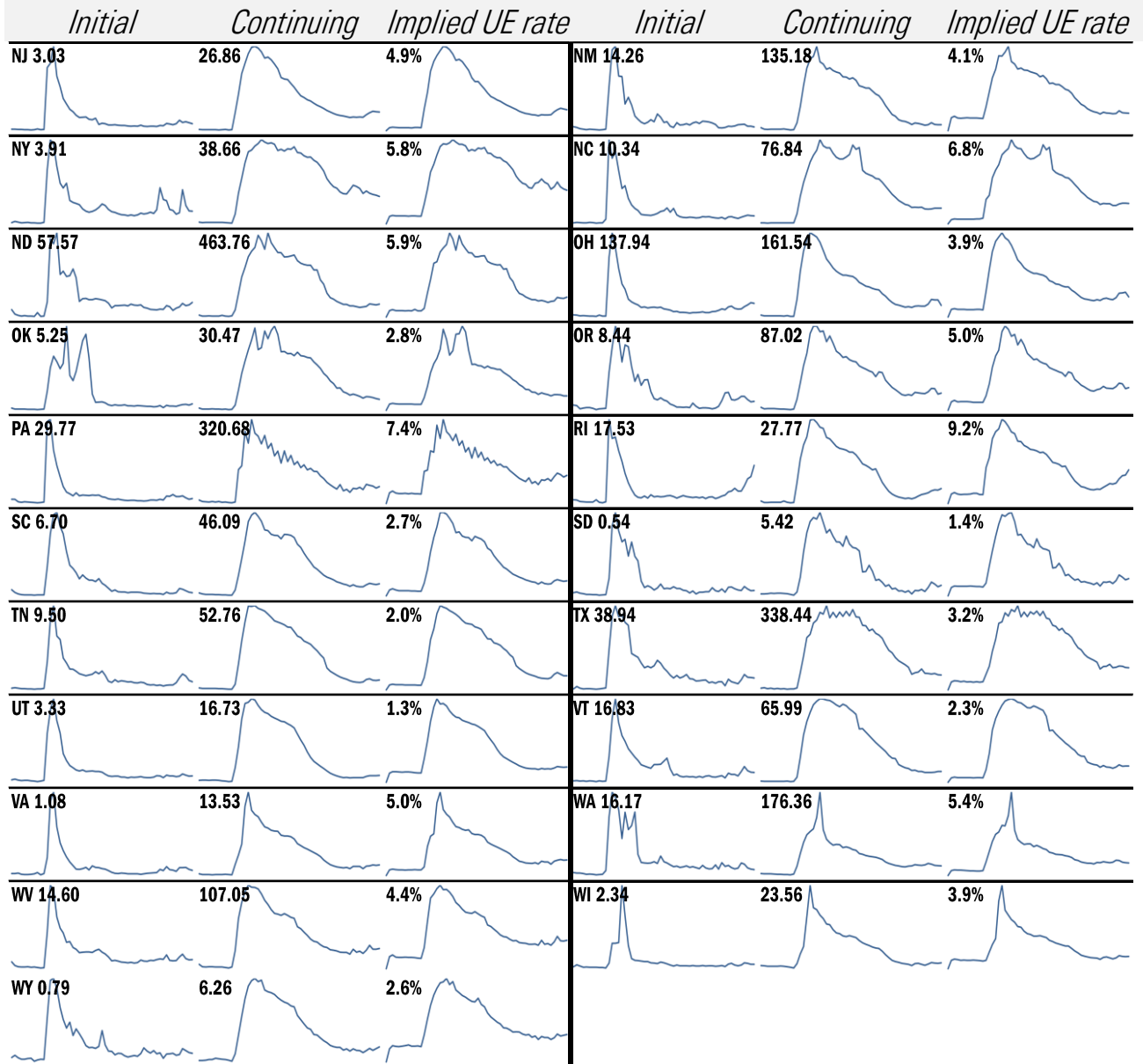
Thomas Demas: 704 552 3625 [tdemas@trendmacro.com](mailto:tdemas@trendmacro.com)

# State by state unemployment insurance claims (thousands)



Source: Department of Labor, TrendMacro calculations

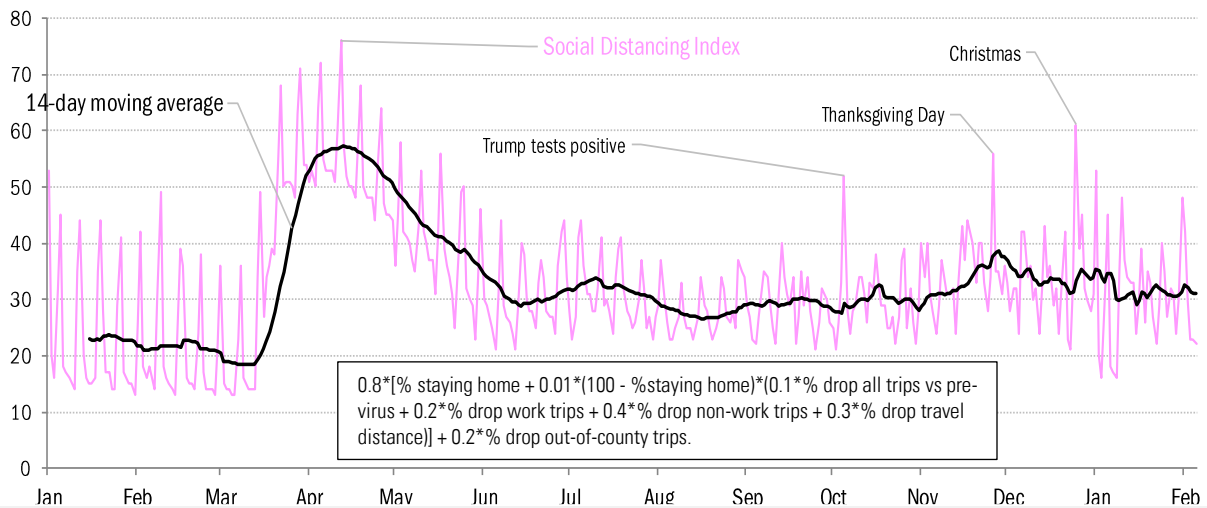
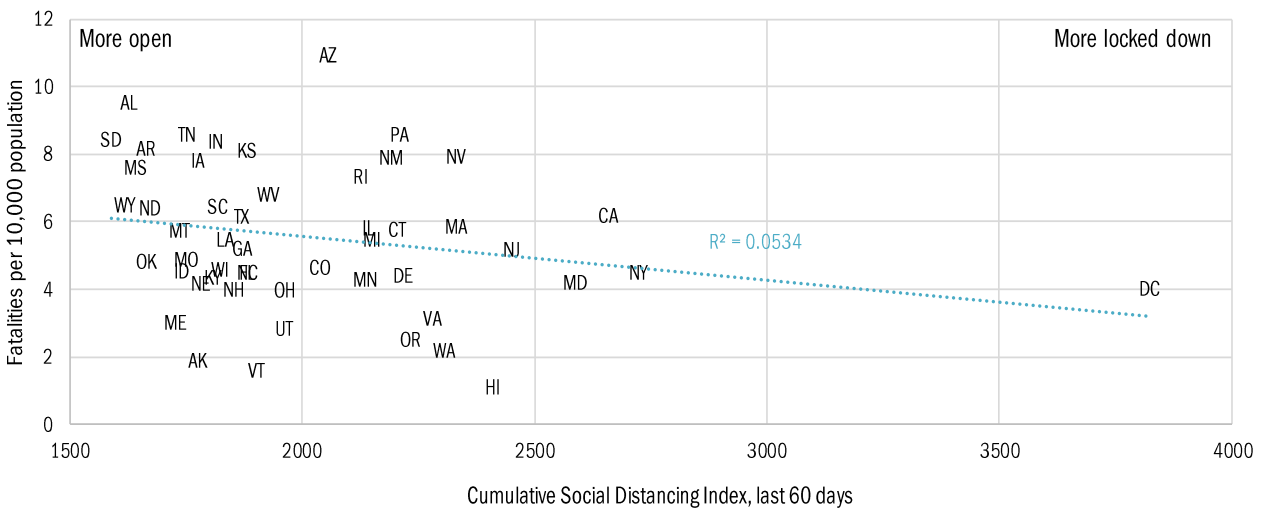
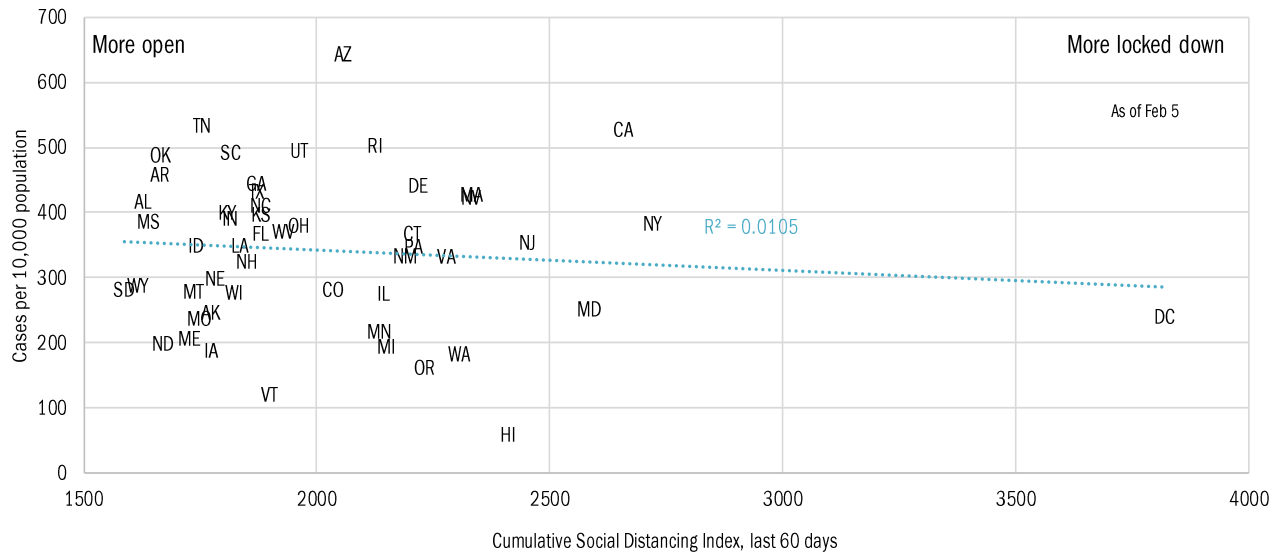
# State by state unemployment insurance claims (thousands)



Source: Department of Labor, TrendMacro calculations

# Locking down in the "dark winter"

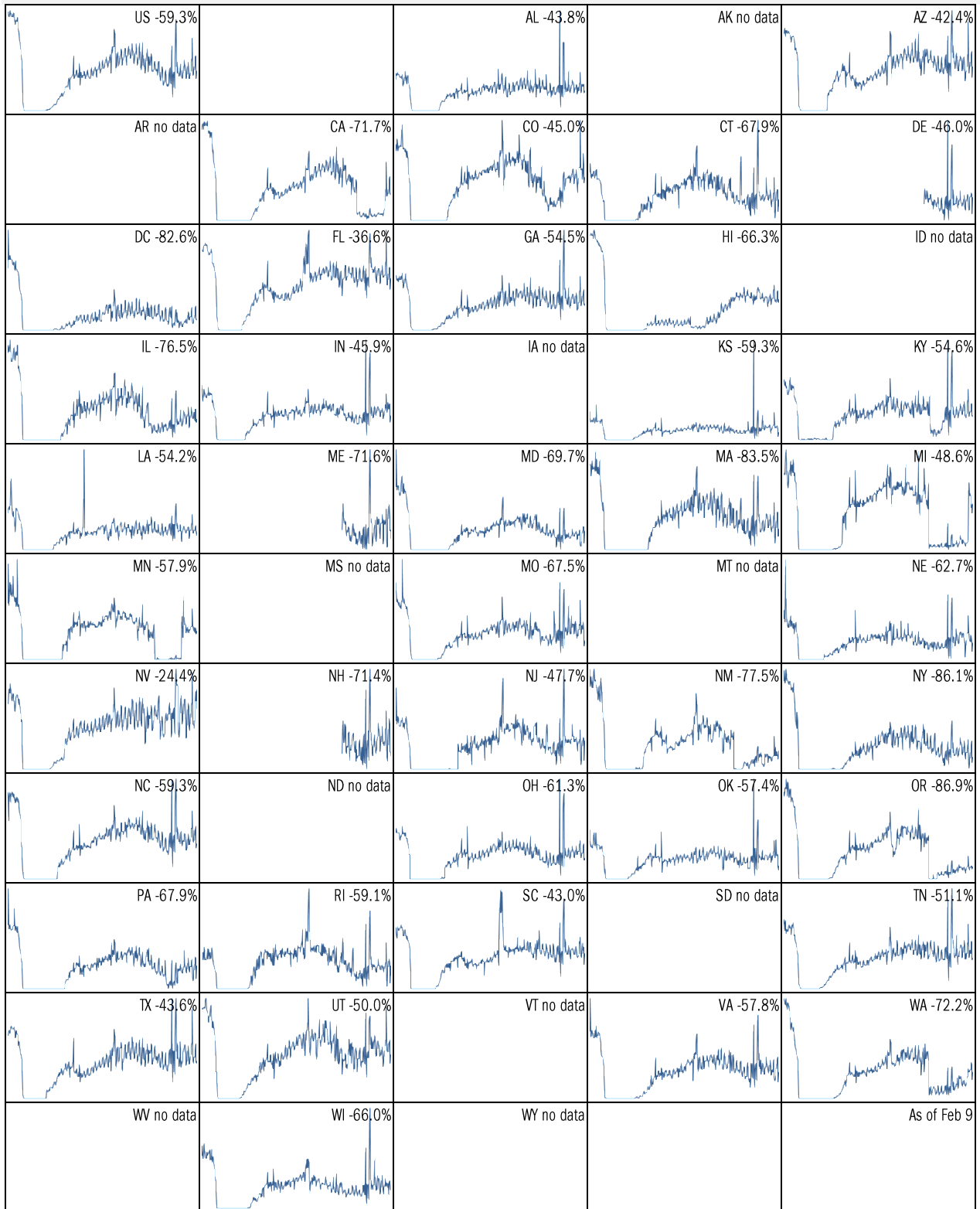
## Covid-2019 fatalities and cases vs social distancing measured by cell-phone mobility data



Source: [University of Maryland COVID-19 Impact Analysis Platform](https://www.um.edu.edu/impact-analysis), TrendMacro calculations

# Make America eat again:

YOY change in seated diners in restaurants Feb 18 to present ■ Positive



Source: [Open Table](#), TrendMacro calculations

Make America move again: Mobility from Feb 5 vs Jan 3 – Feb 6 baseline ■ Positive

	<i>Retail/rec</i>	<i>Grocery/pharm</i>	<i>Parks</i>	<i>Transit stations</i>	<i>Workplaces</i>	<i>Time at home</i>
<b>US -24</b>		<b>-13</b>	<b>-23</b>	<b>-41</b>	<b>-28</b>	<b>10</b>
<b>AL -15</b>		<b>-6</b>	<b>-15</b>	<b>-16</b>	<b>-19</b>	<b>7</b>
<b>AK -15</b>		<b>-8</b>	<b>-1</b>	<b>-31</b>	<b>-20</b>	<b>8</b>
<b>AZ -19</b>		<b>-13</b>	<b>-21</b>	<b>-26</b>	<b>-29</b>	<b>9</b>
<b>AR -11</b>		<b>-5</b>	<b>2</b>	<b>-10</b>	<b>-19</b>	<b>6</b>
<b>CA -31</b>		<b>-16</b>	<b>-23</b>	<b>-49</b>	<b>-35</b>	<b>13</b>
<b>CO -23</b>		<b>-10</b>	<b>-7</b>	<b>-40</b>	<b>-27</b>	<b>10</b>
<b>CT -32</b>		<b>-19</b>	<b>-31</b>	<b>-47</b>	<b>-34</b>	<b>15</b>
<b>DE -27</b>		<b>-16</b>	<b>-31</b>	<b>-49</b>	<b>-31</b>	<b>13</b>
<b>DC -59</b>		<b>-31</b>	<b>-57</b>	<b>-73</b>	<b>-54</b>	<b>20</b>
<b>FL -20</b>		<b>-13</b>	<b>-27</b>	<b>-38</b>	<b>-24</b>	<b>7</b>
<b>GA -20</b>		<b>-11</b>	<b>-23</b>	<b>-34</b>	<b>-25</b>	<b>9</b>
<b>HI -35</b>		<b>-23</b>	<b>-46</b>	<b>-57</b>	<b>-30</b>	<b>11</b>
<b>ID -8</b>		<b>-3</b>	<b>19</b>	<b>-13</b>	<b>-17</b>	<b>6</b>
<b>IL -31</b>		<b>-14</b>	<b>-33</b>	<b>-45</b>	<b>-30</b>	<b>12</b>

Source: [Google Mobility Reports](https://www.google.com/covid19/mobility/), TrendMacro calculations

Make America move again: Mobility from Feb 5 vs Jan 3 – Feb 6 baseline ■ Positive

	<i>Retail/rec</i>	<i>Grocery/pharm</i>	<i>Parks</i>	<i>Transit stations</i>	<i>Workplaces</i>	<i>Residential</i>
<b>IN -20</b>		-11	-13	-19	-21	8
<b>IA -21</b>		-2	-19	-27	-20	10
<b>KS -16</b>		-9	-3	-13	-19	7
<b>KY -21</b>		-9	-15	-19	-24	9
<b>LA -17</b>		-6	-26	-21	-21	6
<b>ME -26</b>		-11	-4	-41	-26	11
<b>MD -35</b>		-22	-29	-51	-40	17
<b>MA -35</b>		-19	-32	-60	-37	16
<b>MI -29</b>		-14	1	-37	-26	11
<b>MN -25</b>		-15	-4	-47	-27	12
<b>MS -12</b>		-9	-15	0	-18	5
<b>MO -15</b>		-8	-14	-21	-19	7
<b>MT -12</b>		-2	1	-11	-14	6
<b>NE -15</b>		-6	-18	-24	-17	8
<b>NV -23</b>		-12	-33	-44	-30	10

Source: [Google Mobility Reports](https://www.google.com/covid19/mobility/), TrendMacro calculations



Make America move again: Mobility from Feb 5 vs Jan 3 – Feb 6 baseline ■ Positive

	<i>Retail/rec</i>	<i>Grocery/pharm</i>	<i>Parks</i>	<i>Transit stations</i>	<i>Workplaces</i>	<i>Residential</i>
<b>NH -25</b>		-12	-5	-38	-26	12
<b>NJ -40</b>		-20	-31	-56	-42	18
<b>NM -24</b>		-11	-15	-19	-29	10
<b>NY -42</b>		-20	-43	-55	-39	16
<b>NC -22</b>		-11	-22	-37	-26	9
<b>ND -17</b>		-14	-15	-27	-15	7
<b>OH -24</b>		-13	-12	-27	-24	10
<b>OK -11</b>		-5	-9	-9	-19	6
<b>OR -26</b>		-11	-3	-39	-31	10
<b>PA -34</b>		-18	-33	-46	-36	15
<b>RI -30</b>		-15	-16	-52	-31	13
<b>SC -14</b>		-9	-26	-17	-21	7
<b>SD -10</b>		0	6	-10	-12	6
<b>TN -18</b>		-9	-18	-24	-21	8
<b>TX -18</b>		-11	-17	-29	-25	9

Source: [Google Mobility Reports](https://www.google.com/covid19/mobility/), TrendMacro calculations

Make America move again: Mobility from Feb 5 vs Jan 3 – Feb 6 baseline ■ Positive

	<i>Retail/rec</i>	<i>Grocery/pharm</i>	<i>Parks</i>	<i>Transit stations</i>	<i>Workplaces</i>	<i>Residential</i>
<b>UT -18</b>		-8	2	-34	-24	9
<b>VT -31</b>		-16	-13	-52	-27	12
<b>VA -30</b>		-15	-24	-44	-34	14
<b>WA -27</b>		-14	-7	-51	-33	12
<b>WV -23</b>		-12	-21	-24	-25	9
<b>WI -28</b>		-12	-3	-31	-22	10
<b>WY -16</b>		-7	-2	-12	-14	5

Source: [Google Mobility Reports](#), TrendMacro calculations