

Data Insights: Consumer Price Index, Producer Price Index

Wednesday, February 10, 2021

Today's CPI data: what you need to know

	12-mo YOY	3-mo ann	1-mo ann	12 / 3/ 1-mo			12-mo YOY history
All items	+1.40%	+2.7%	+3.1%				
Core	+1.41%	+1.0%	+0.4%				
OER	+2.0%	+1.4%	+1.7%				
All less OER	+1.5%	+2.8%	+3.6%				
Core less OER	+1.1%	+0.8%	-0.4%				
Energy	-3.8%	+30.7%	+50.9%				
All less energy	+1.7%	+1.1%	+0.5%				
Food	+3.7%	+1.6%	+0.9%				
All less food	+1.0%	+2.9%	+3.5%				
Health care	+1.9%	+0.2%	+4.7%				
All less health care	+1.3%	+3.0%	+3.0%				

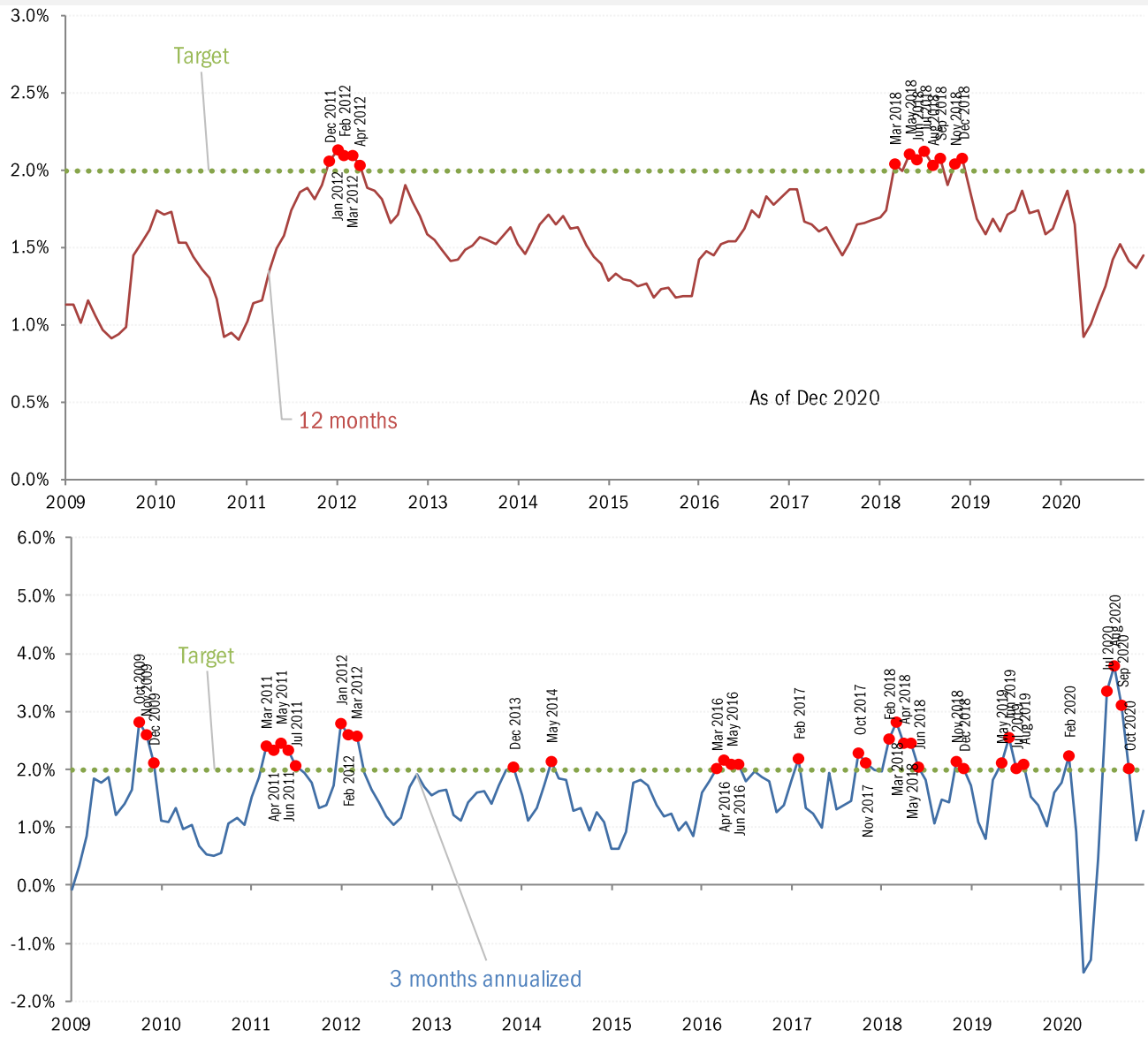
Source: BLS Consumer Price Index, TrendMacro calculations

For more information contact us:

Donald Luskin: 312 273 6766 don@trendmacro.com
 Thomas Demas: 704 552 3625 tdemas@trendmacro.com

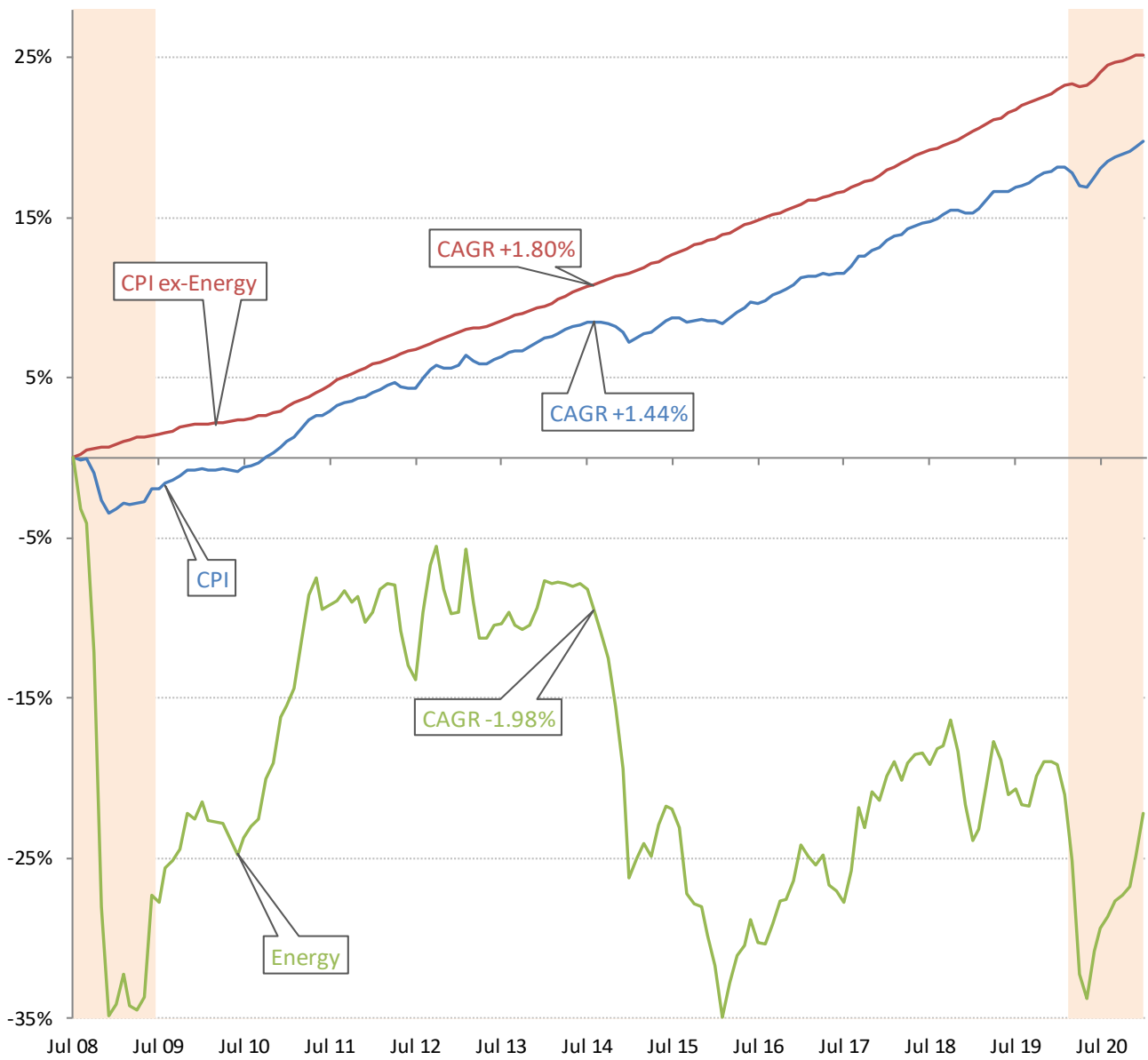
The Fed-eye view of inflation (or lack thereof)

Core PCE Price Index



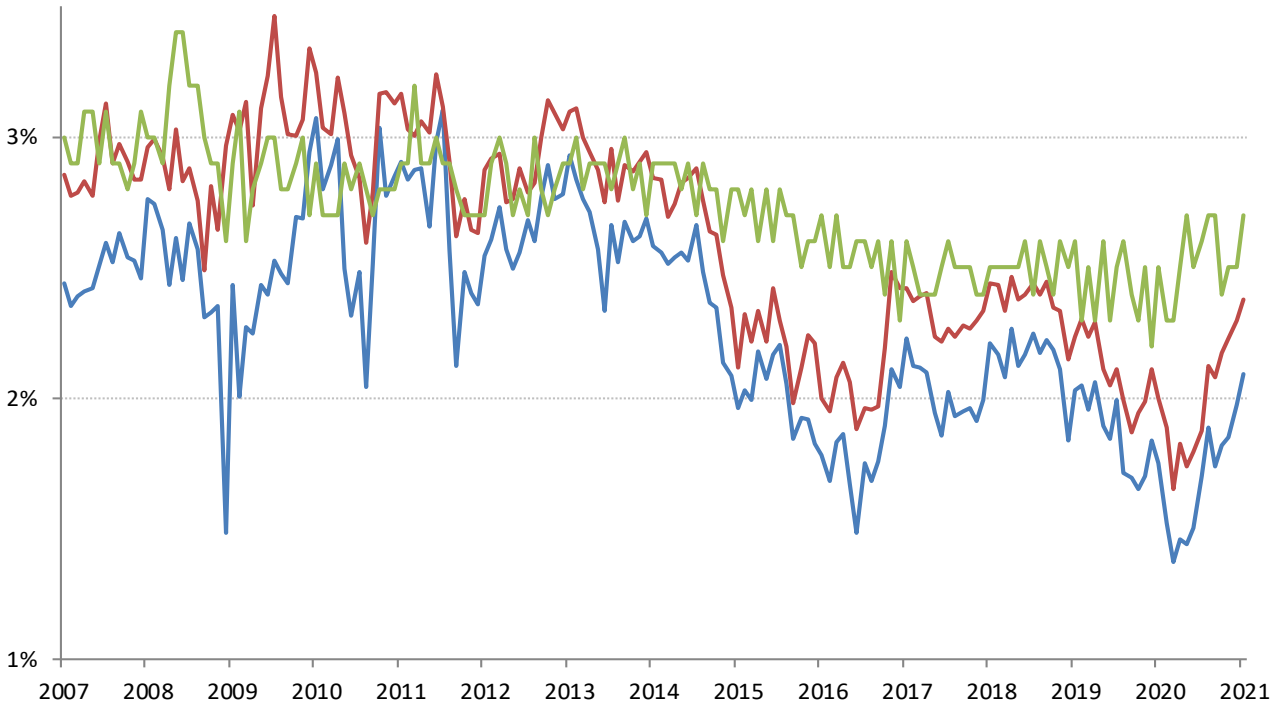
Source: Bureau of Economic Analysis, TrendMacro calculations

The deflation delusion: it's all about oil, and always has been
 Cumulative growth of CPI from July 2008, the all-time high oil price Recession



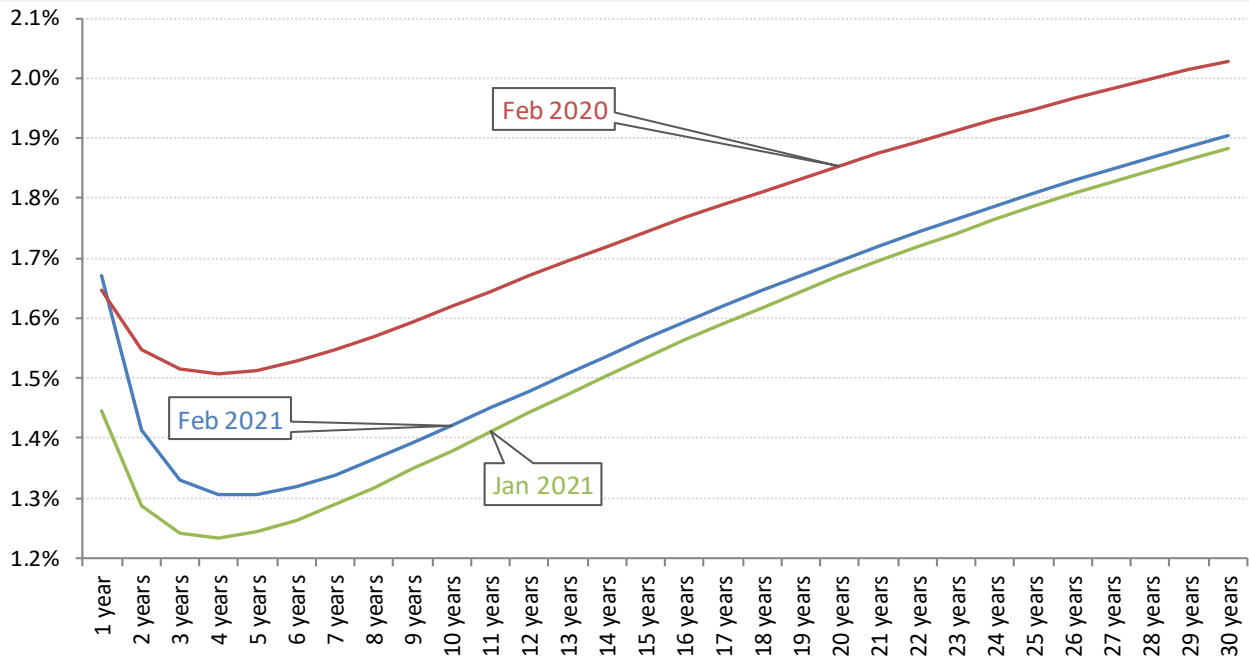
Source: Bloomberg, TrendMacro calculations

Implied 5-year inflation, 5 years forward — TIPS — Swaps — U. Michigan Survey



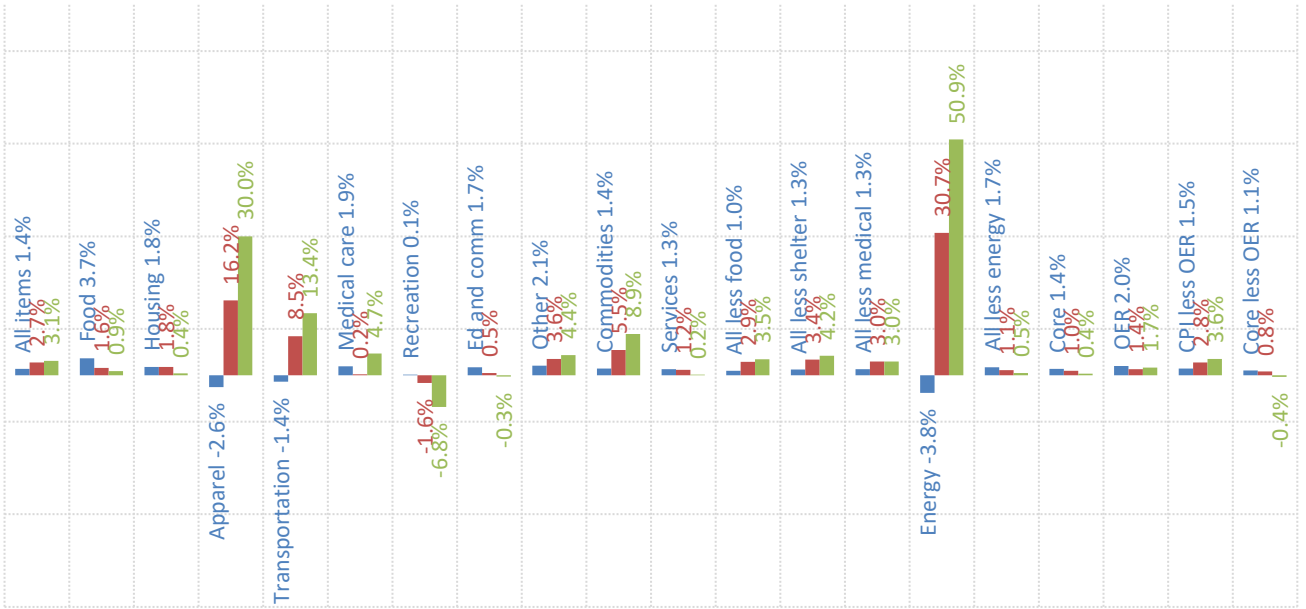
Source: Bloomberg, TrendMacro calculations

Modelled inflation yield curve, per annum — Based on swaps, forecasts and yields



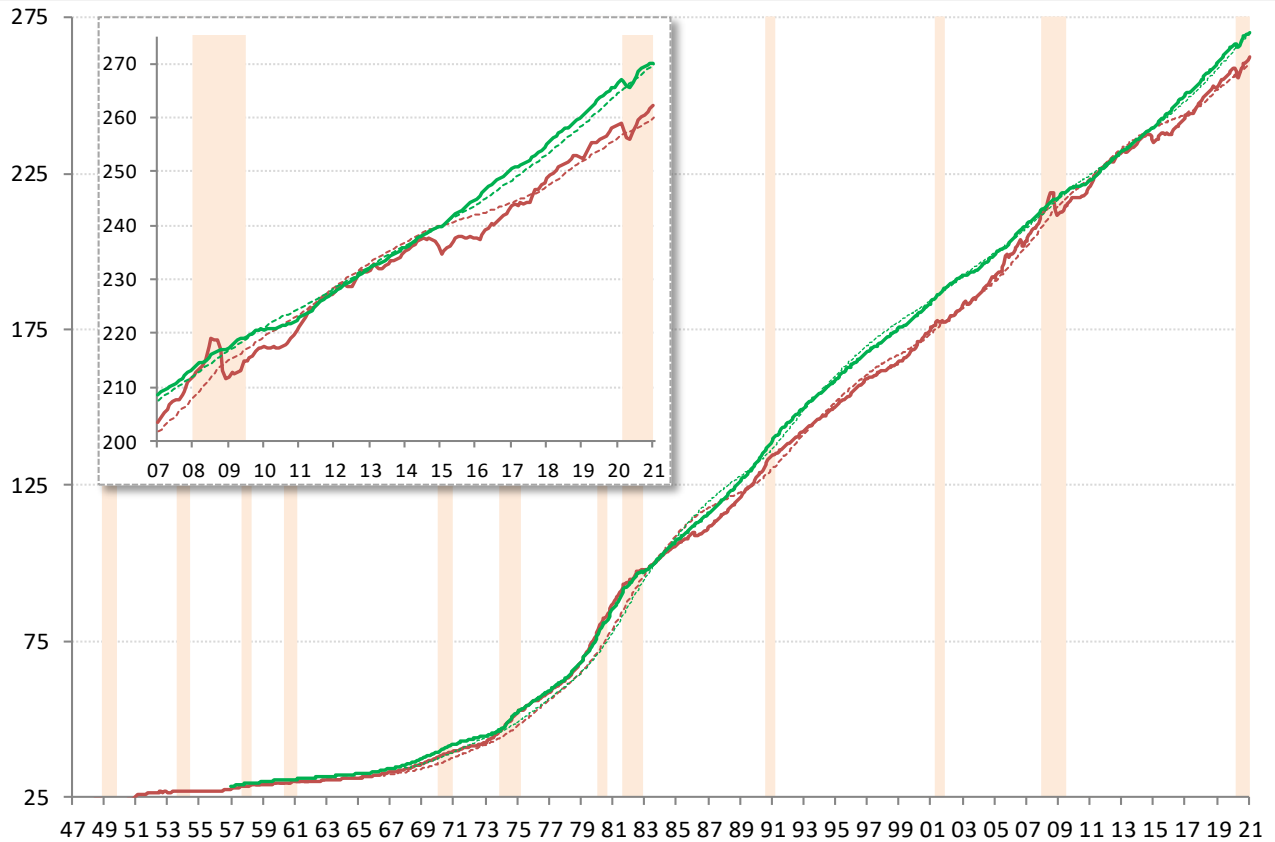
Source: [Cleveland Fed](#), TrendMacro calculations

US CPI inflation by sector (SAAR) ■ 12-month ■ 3-month ■ 1-month



Source: BLS Consumer Price Index, TrendMacro calculations

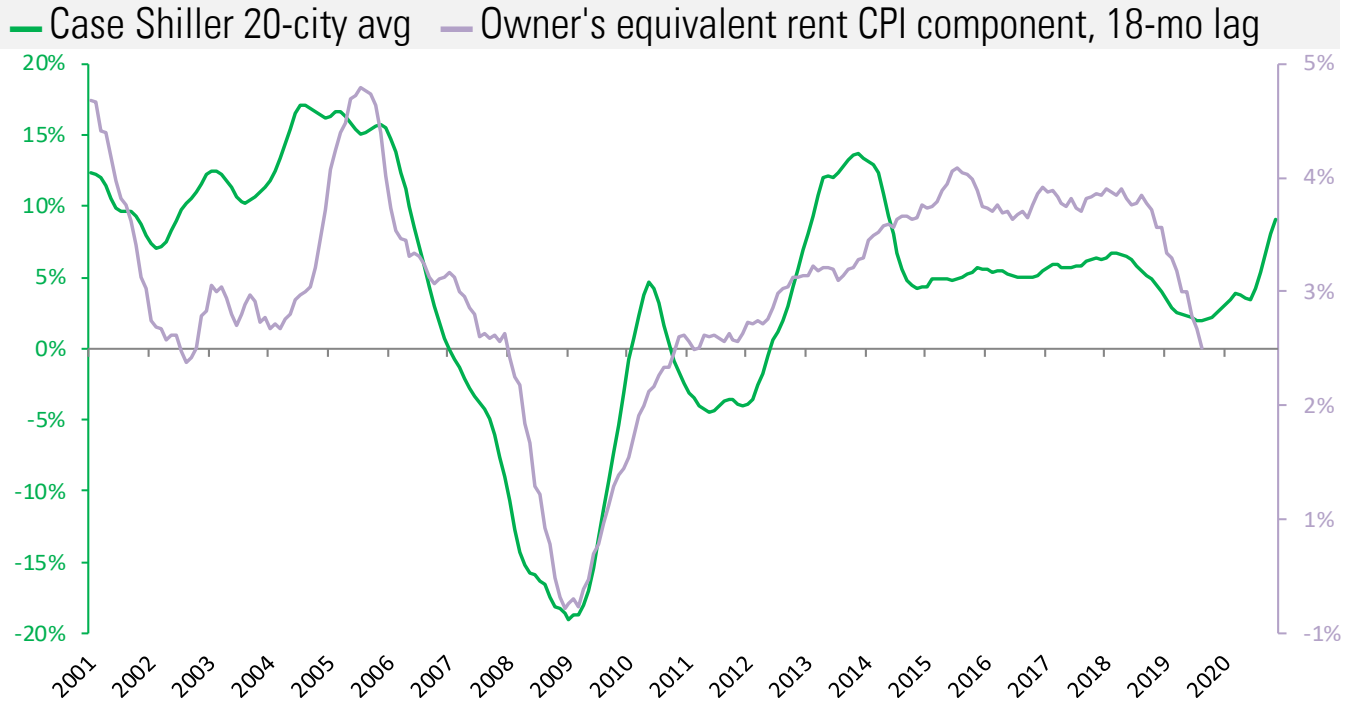
US CPI Core — Level ... 20-year trend ■ Recession



Source: BLS Consumer Price Index, TrendMacro calculations

Housing leads US CPI

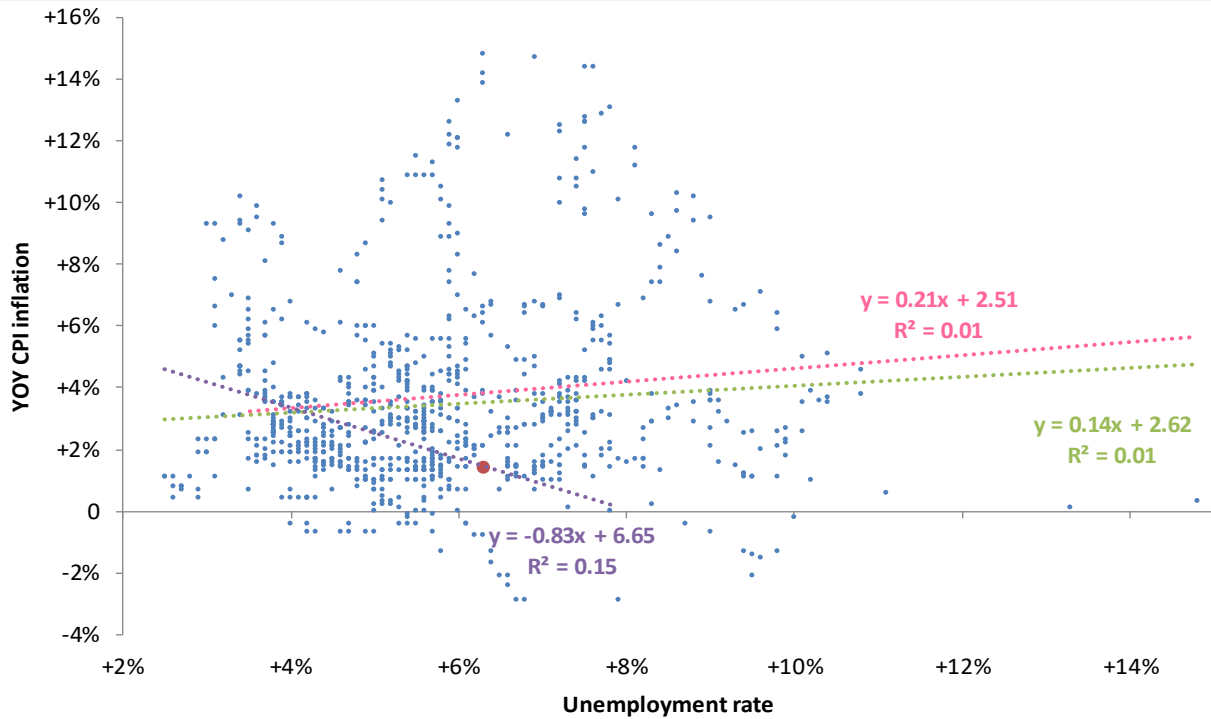
Year-over-year change



Source: BLS, Standard & Poor's Case Shiller, TrendMacro calculations

The world is flat: the vanishing Phillips Curve

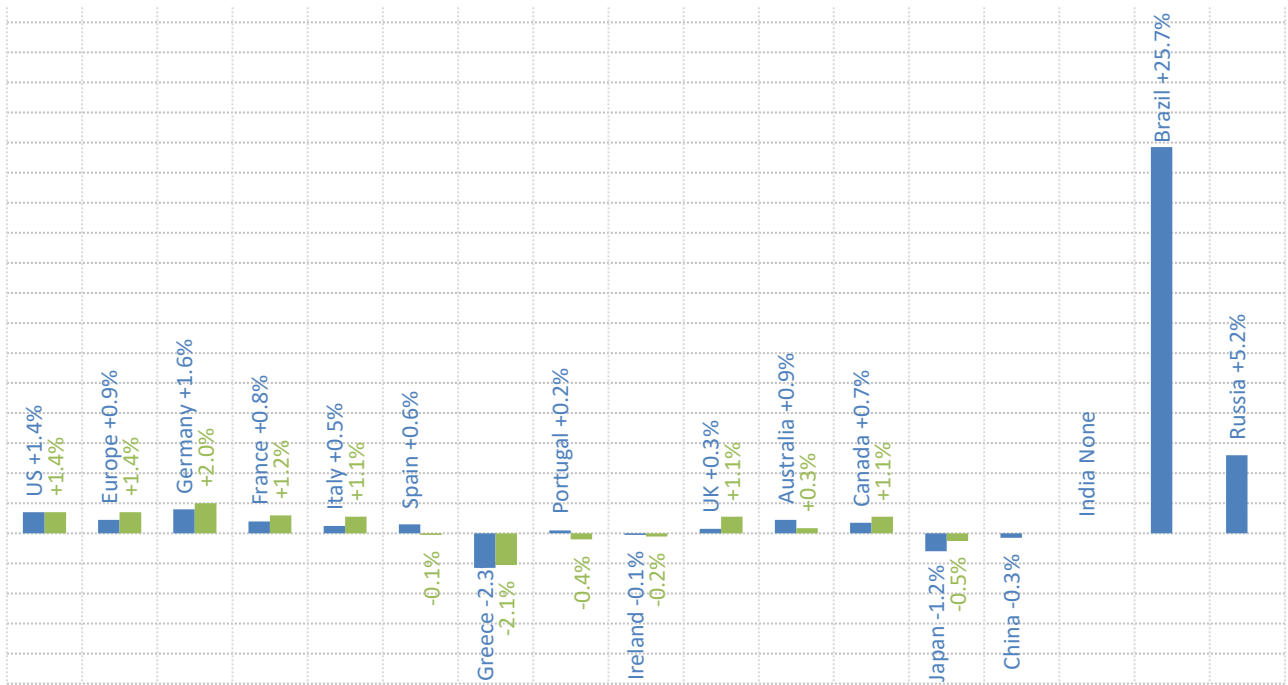
● Latest Linear trend: ● Pre-74 ● Post-74 ● All



Source: BLS Consumer Price Index, Current Population Survey

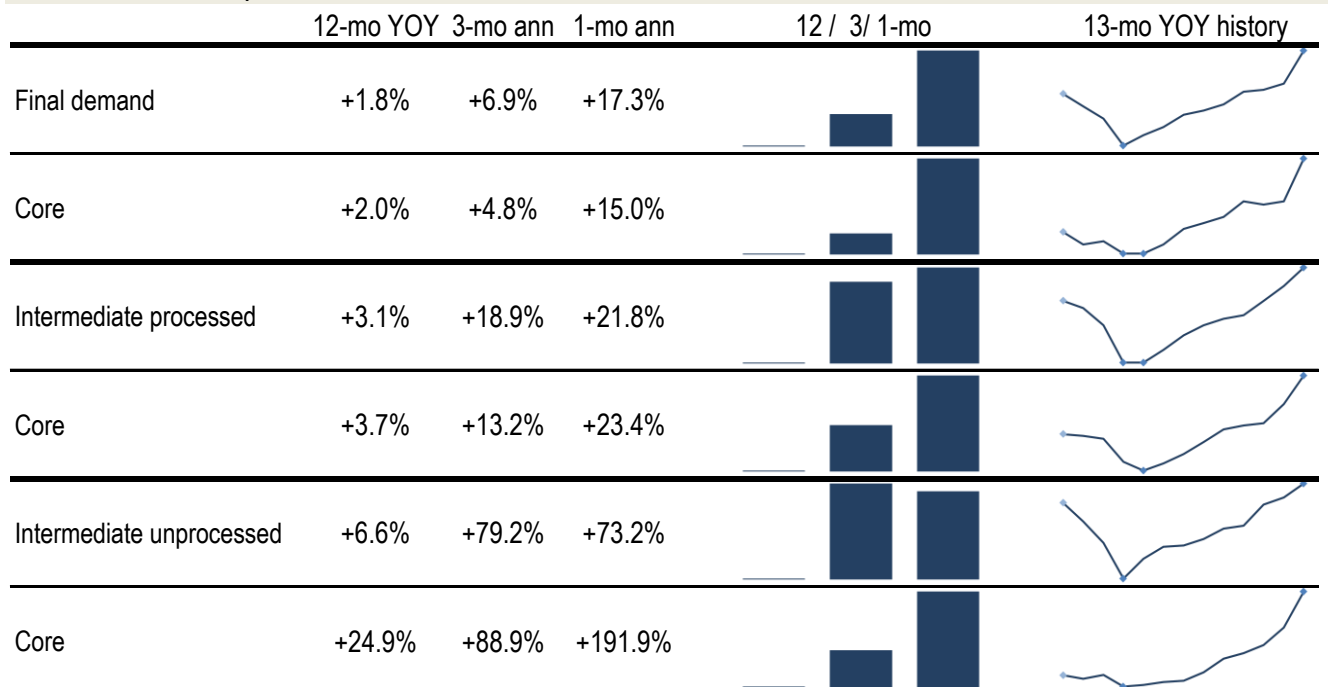
Major economies CPI, year on year

■ Headline ■ Ex-food and energy



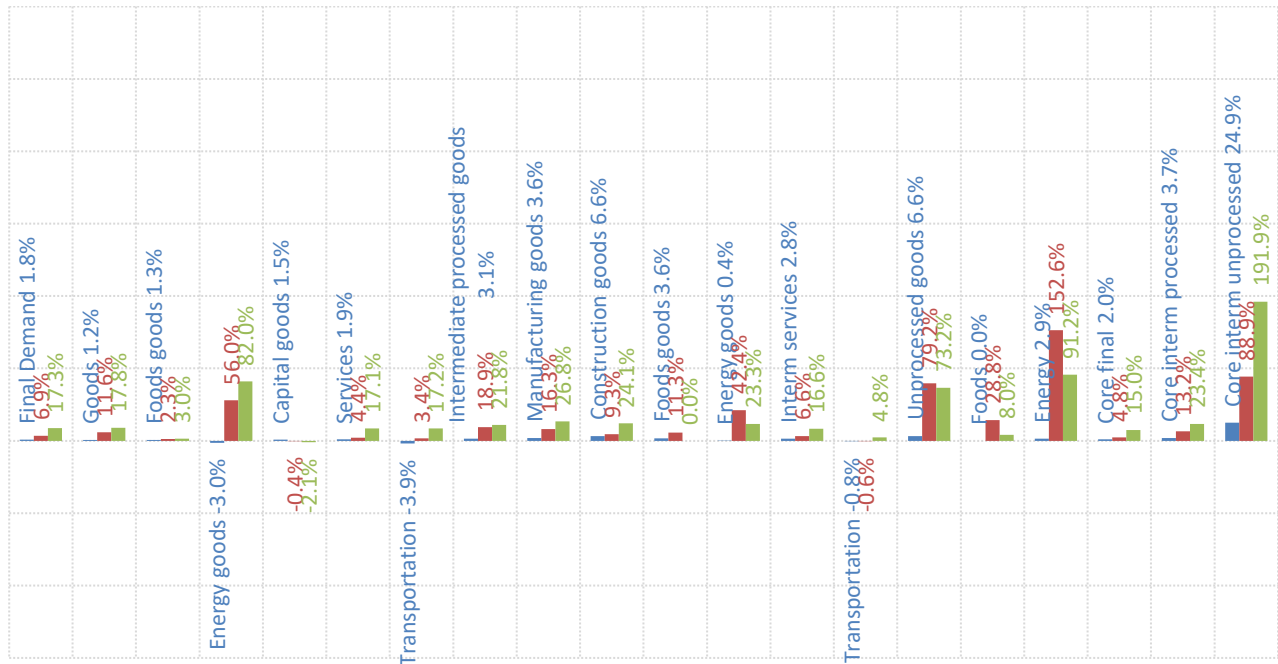
Source: Respective Statistical agencies, TrendMacro calculations

PPI data: what you need to know



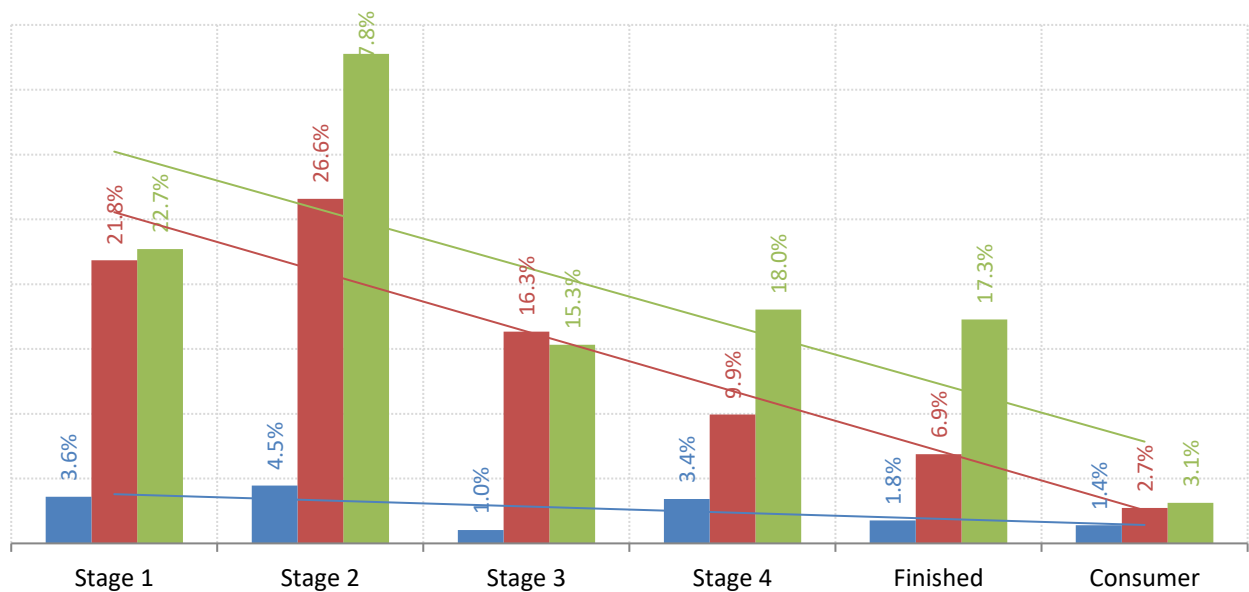
Source: BLS Producer Price Index, TrendMacro calculations

PPI inflation by sector (SAAR) ■ 12-mo ■ 3-mo ■ 1-mo



Source: BLS Producer Price Index, TrendMacro calculations

The inflation pipeline (SAAR) ■ 12-mo ■ 3-mo ■ 1-mo



Source: BLS Producer Price Index and Consumer Price Index, TrendMacro calculations