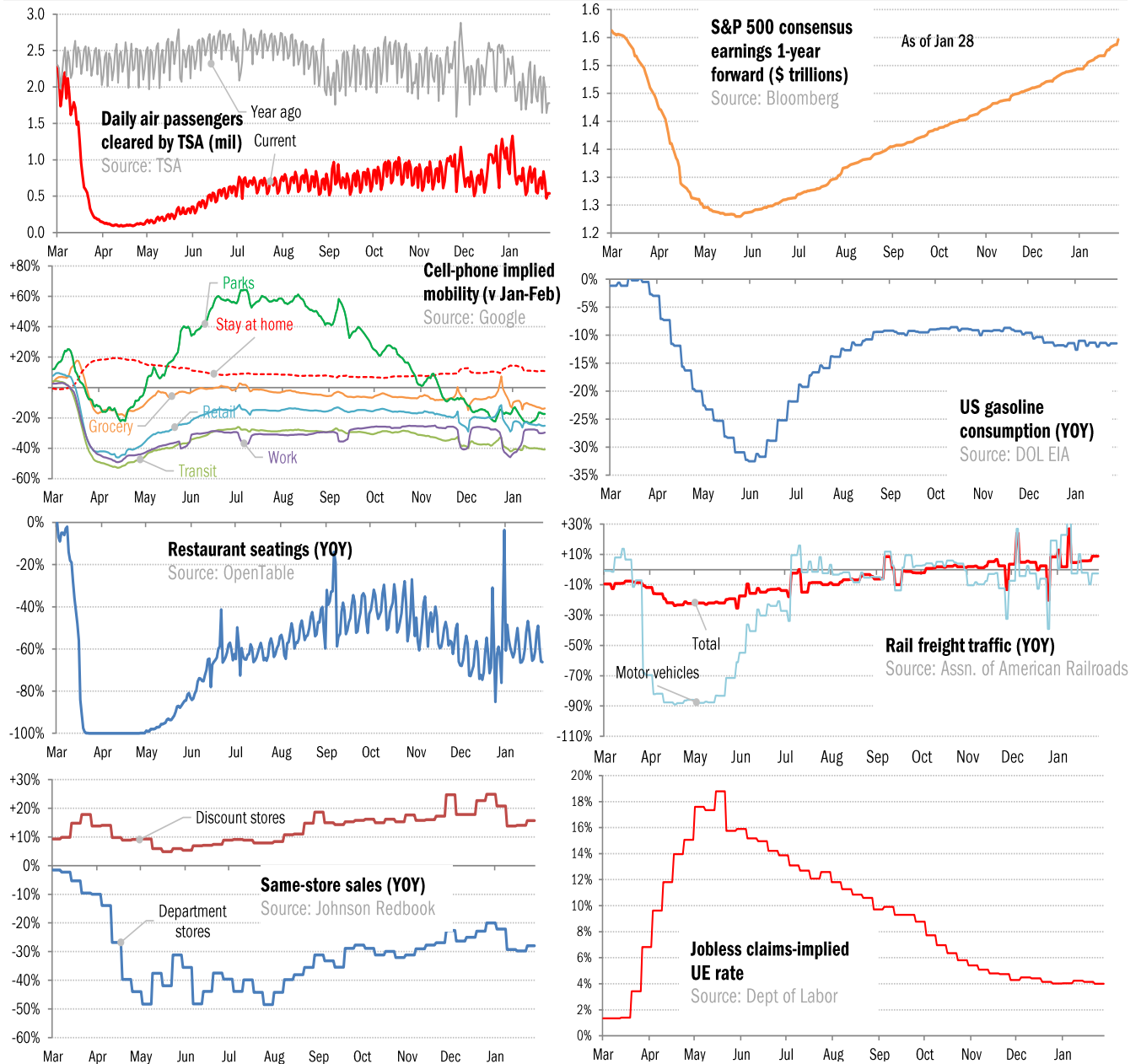


## Data Insights: High-Frequency Post-Virus US Recovery Monitor

Thursday, January 28, 2021

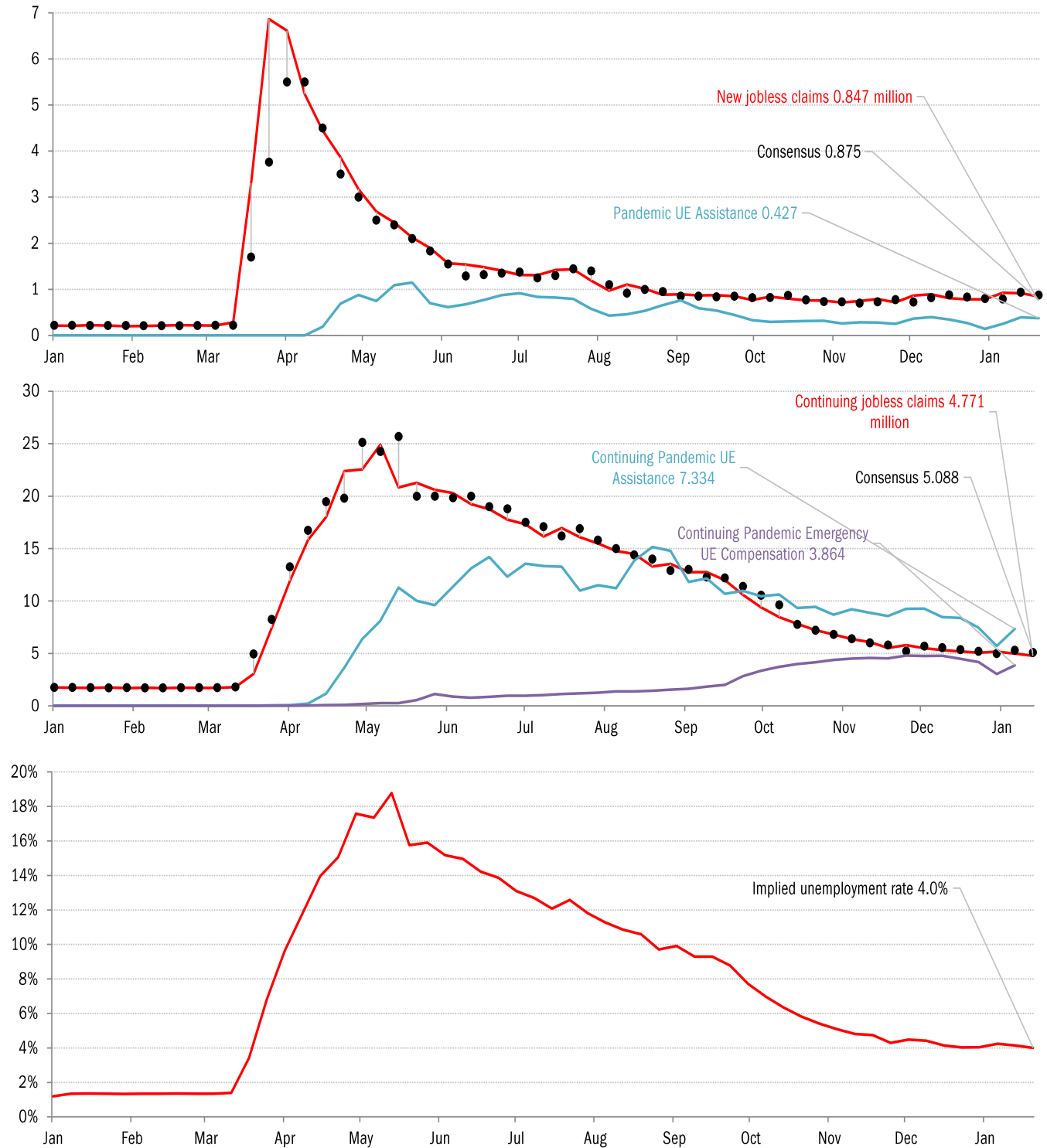
### The US high-frequency macro data dashboard

(state level and other detail in subsequent charts)



Source: As indicated, TrendMacro calculations

# High-frequency view of the US labor market: weekly unemployment claims (millions)

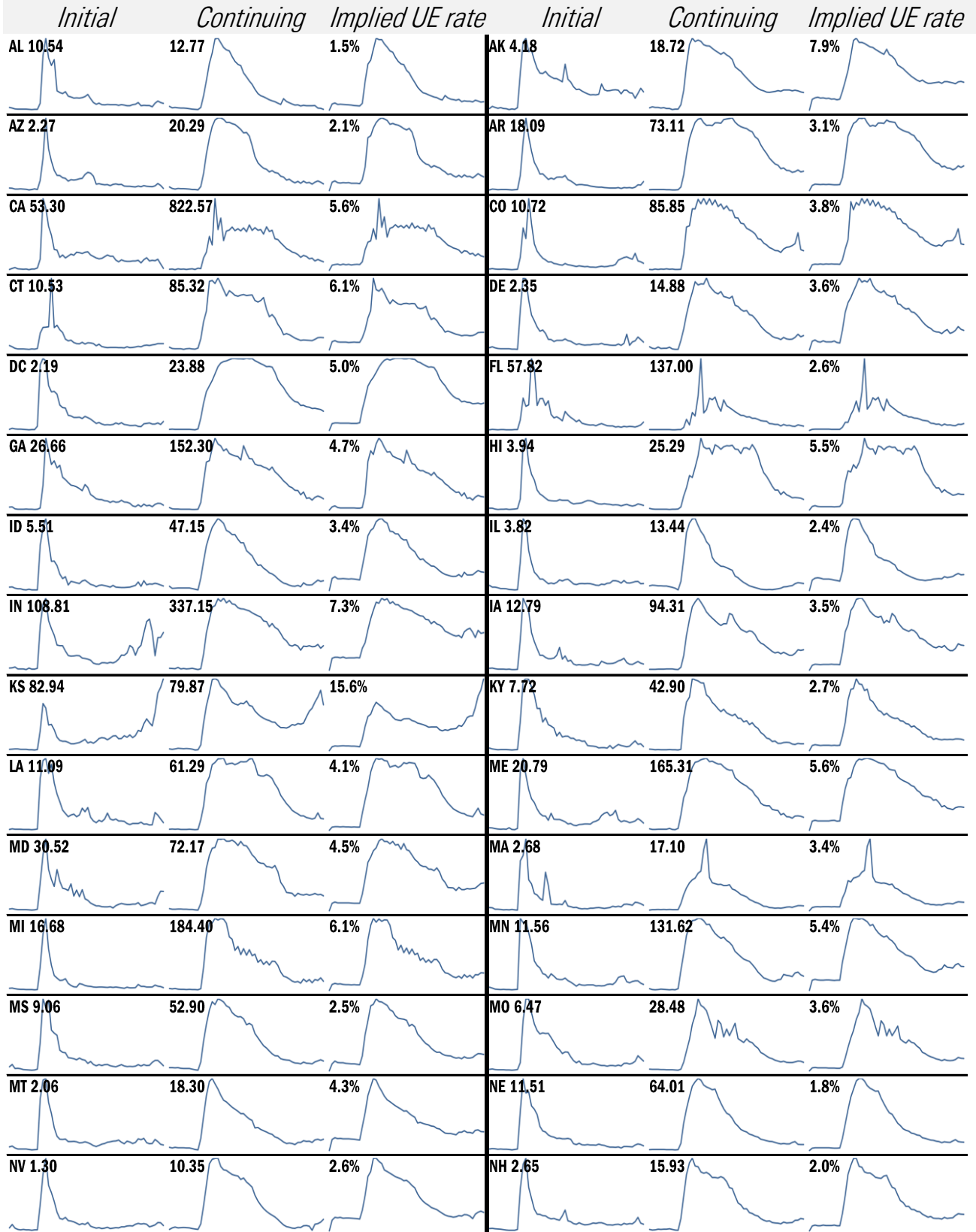


Source: Department of Labor, Bloomberg, TrendMacro calculations

**For more information contact us:**

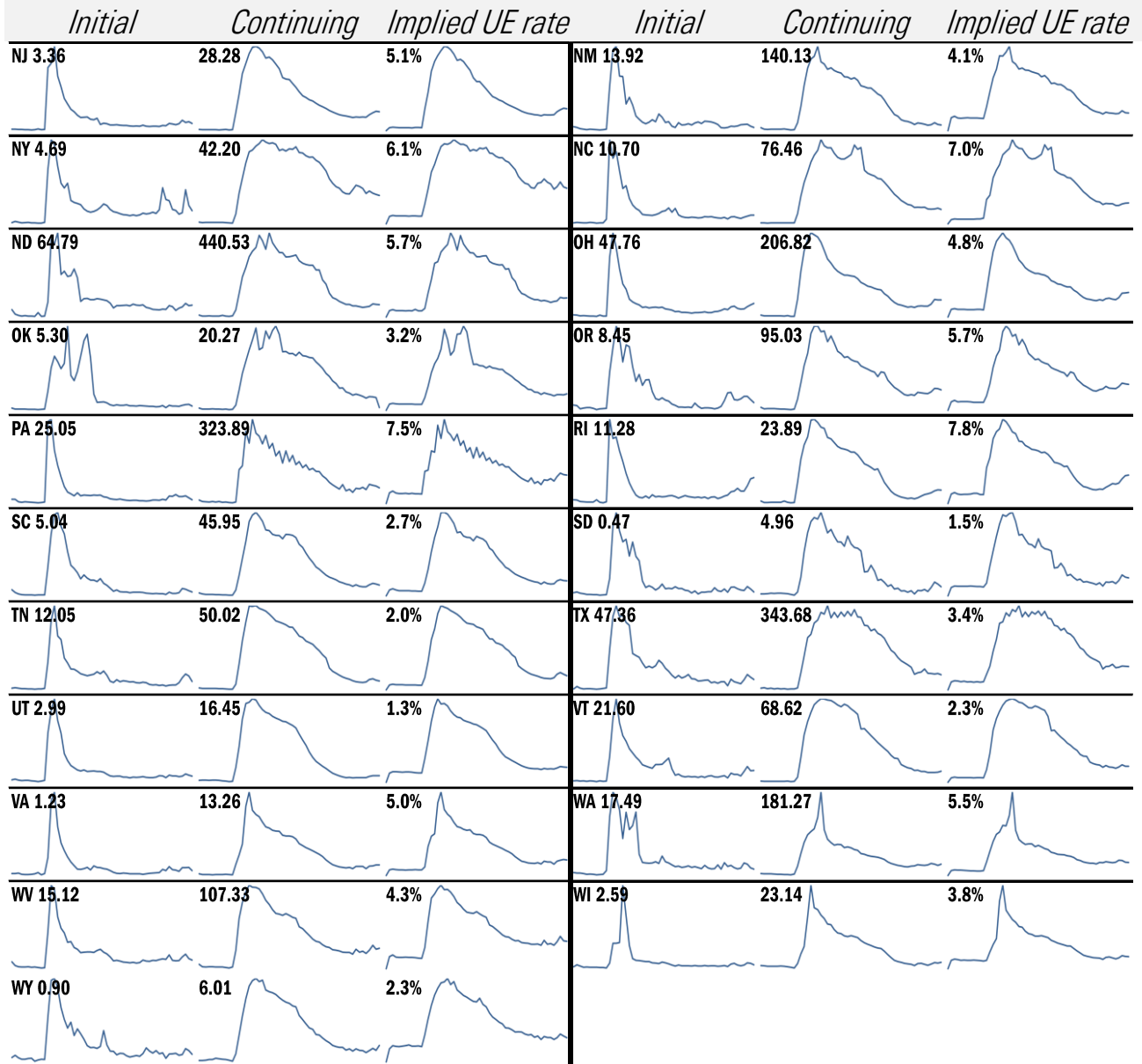
Donald Luskin: 312 273 6766 [don@trendmacro.com](mailto:don@trendmacro.com)  
 Thomas Demas: 704 552 3625 [tdemas@trendmacro.com](mailto:tdemas@trendmacro.com)

# State by state unemployment insurance claims (thousands)



Source: Department of Labor, TrendMacro calculations

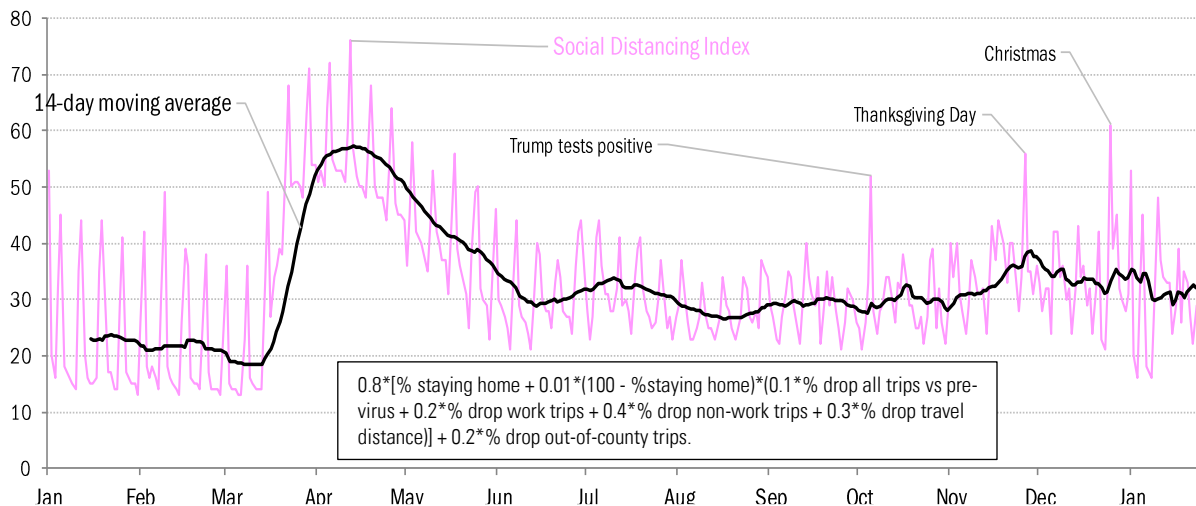
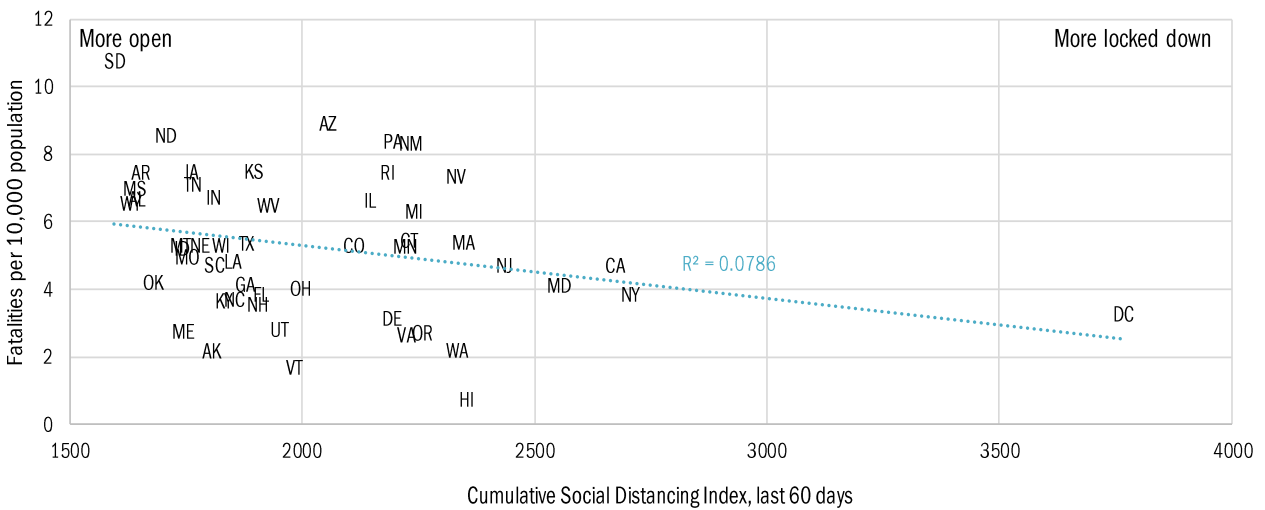
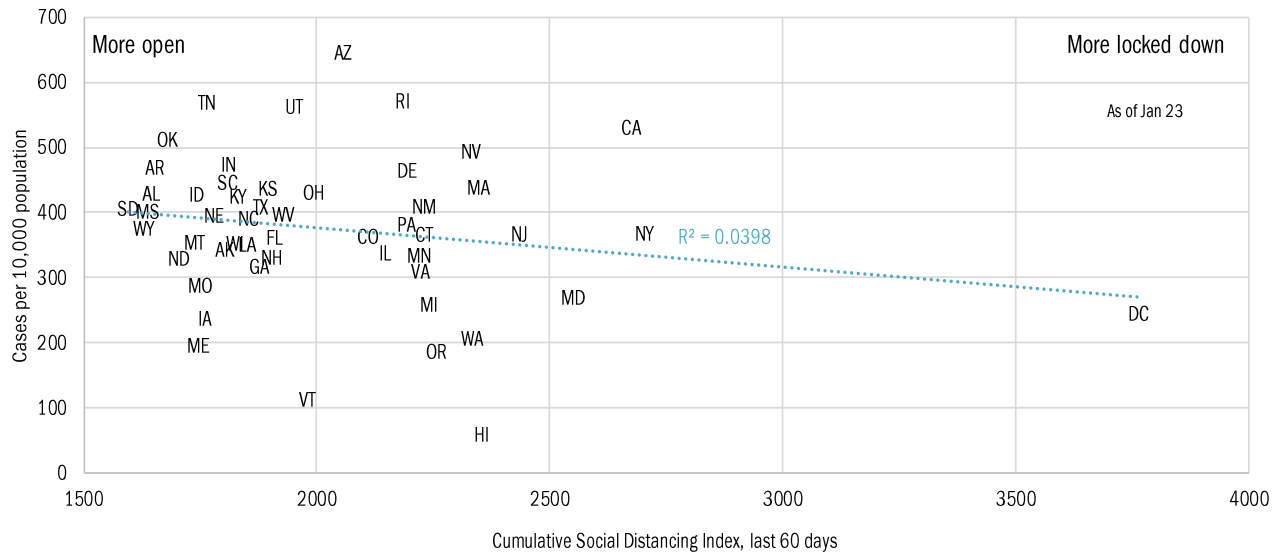
## State by state unemployment insurance claims (thousands)



Source: Department of Labor, TrendMacro calculations

# Locking down in the "dark winter"

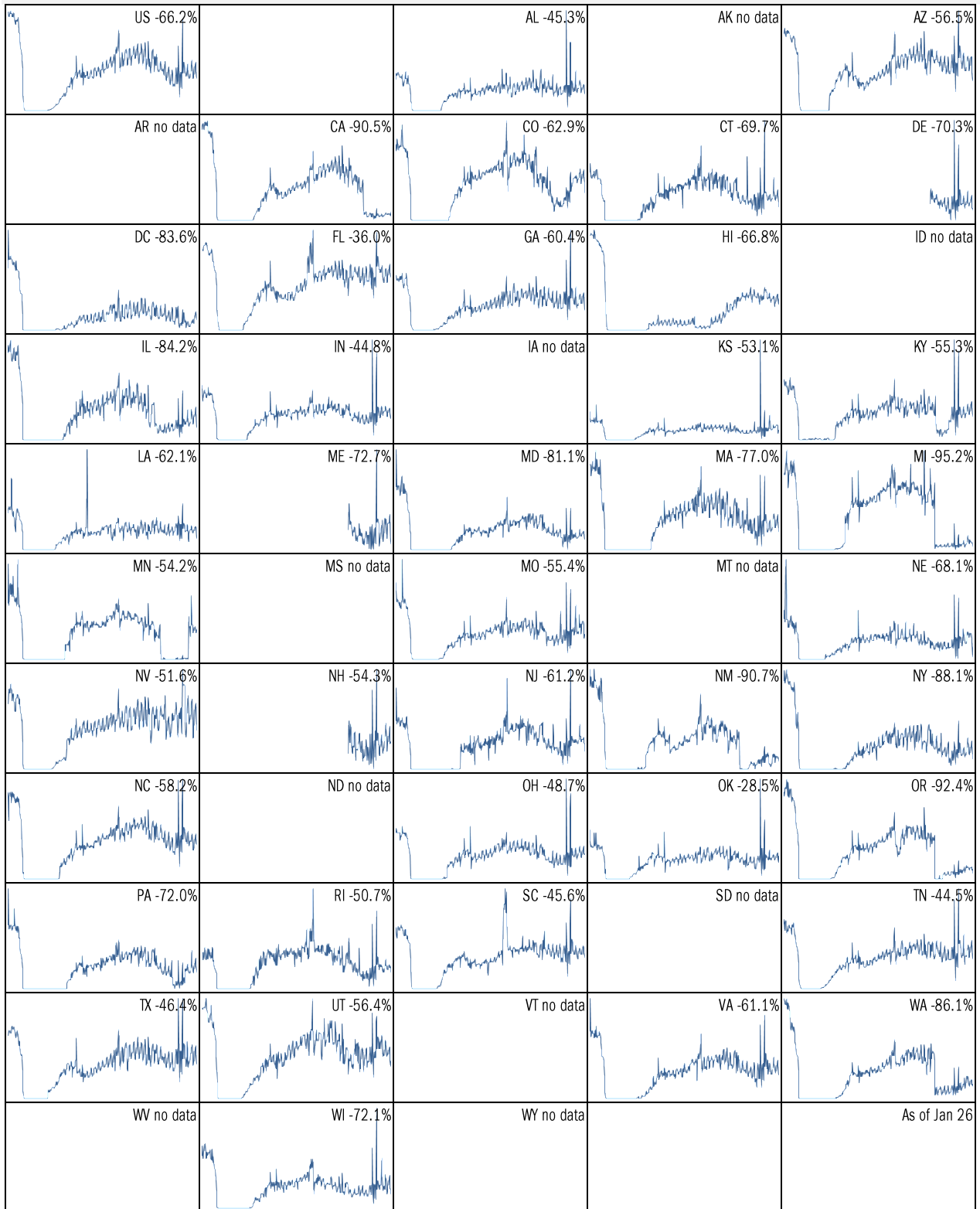
## Covid-2019 fatalities and cases vs social distancing measured by cell-phone mobility data



Source: [University of Maryland COVID-19 Impact Analysis Platform](https://covid19.umd.edu/), TrendMacro calculations

# Make America eat again:

YOY change in seated diners in restaurants Feb 18 to present ■ Positive



Source: [Open Table](#), TrendMacro calculations

Make America move again: Mobility from Feb 5 vs Jan 3 – Feb 6 baseline ■ Positive

	<i>Retail/rec</i>	<i>Grocery/pharm</i>	<i>Parks</i>	<i>Transit stations</i>	<i>Workplaces</i>	<i>Time at home</i>
<b>US -25</b>		-14	-17	-41	-30	11
<b>AL -18</b>		-10	-15	-17	-24	8
<b>AK -19</b>		-12	0	-33	-25	10
<b>AZ -22</b>		-14	-23	-29	-32	11
<b>AR -16</b>		-9	7	-12	-22	8
<b>CA -35</b>		-18	-19	-51	-39	14
<b>CO -27</b>		-13	-13	-42	-30	11
<b>CT -25</b>		-16	-7	-40	-30	12
<b>DE -20</b>		-11	-13	-44	-29	11
<b>DC -59</b>		-33	-46	-74	-55	19
<b>FL -22</b>		-14	-25	-39	-28	8
<b>GA -21</b>		-12	-16	-35	-30	10
<b>HI -37</b>		-26	-47	-59	-35	13
<b>ID -11</b>		-6	16	-17	-21	7
<b>IL -30</b>		-14	-31	-45	-30	12

Source: [Google Mobility Reports](https://www.google.com/covid19/mobility/), TrendMacro calculations

Make America move again: Mobility from Feb 5 vs Jan 3 – Feb 6 baseline ■ Positive

	<i>Retail/rec</i>	<i>Grocery/pharm</i>	<i>Parks</i>	<i>Transit stations</i>	<i>Workplaces</i>	<i>Residential</i>
<b>IN -19</b>		-12	-8	-18	-23	9
<b>IA -14</b>		0	-7	-24	-18	8
<b>KS -18</b>		-12	3	-14	-23	8
<b>KY -23</b>		-11	-8	-19	-26	9
<b>LA -22</b>		-10	-29	-26	-25	8
<b>ME -23</b>		-10	4	-38	-26	10
<b>MD -28</b>		-16	-4	-49	-37	15
<b>MA -33</b>		-20	-14	-60	-37	15
<b>MI -32</b>		-15	-2	-38	-28	11
<b>MN -25</b>		-16	-8	-47	-29	12
<b>MS -15</b>		-12	-13	-3	-22	7
<b>MO -17</b>		-10	-9	-21	-23	8
<b>MT -14</b>		-6	-6	-13	-17	7
<b>NE -15</b>		-9	-12	-20	-20	8
<b>NV -26</b>		-15	-31	-45	-33	11

Source: [Google Mobility Reports](https://www.google.com/covid19/mobility/), TrendMacro calculations



Make America move again: Mobility from Feb 5 vs Jan 3 – Feb 6 baseline ■ Positive

	<i>Retail/rec</i>	<i>Grocery/pharm</i>	<i>Parks</i>	<i>Transit stations</i>	<i>Workplaces</i>	<i>Residential</i>
<b>NH -21</b>		-12	7	-37	-26	12
<b>NJ -28</b>		-13	-4	-48	-34	14
<b>NM -30</b>		-16	-21	-24	-33	12
<b>NY -36</b>		-18	-28	-53	-36	13
<b>NC -23</b>		-11	-6	-37	-29	10
<b>ND -18</b>		-17	-17	-26	-18	8
<b>OH -23</b>		-14	-7	-26	-25	10
<b>OK -16</b>		-9	-14	-11	-23	8
<b>OR -28</b>		-12	19	-38	-33	11
<b>PA -27</b>		-15	-14	-43	-30	11
<b>RI -27</b>		-16	21	-51	-31	11
<b>SC -18</b>		-10	-16	-18	-25	9
<b>SD -10</b>		0	1	-11	-14	7
<b>TN -19</b>		-10	-9	-23	-24	9
<b>TX -21</b>		-14	-25	-31	-29	11

Source: [Google Mobility Reports](https://www.google.com/covid19/mobility/), TrendMacro calculations

Make America move again: Mobility from Feb 5 vs Jan 3 – Feb 6 baseline ■ Positive

	<i>Retail/rec</i>	<i>Grocery/pharm</i>	<i>Parks</i>	<i>Transit stations</i>	<i>Workplaces</i>	<i>Residential</i>
<b>UT -18</b>		-11	8	-36	-29	10
<b>VT -31</b>		-18	-15	-51	-29	12
<b>VA -26</b>		-12	-3	-41	-33	13
<b>WA -29</b>		-15	13	-50	-35	12
<b>WV -24</b>		-13	-15	-24	-24	9
<b>WI -25</b>		-11	-1	-28	-22	10
<b>WY -19</b>		-11	-9	-6	-18	6

Source: [Google Mobility Reports](#), TrendMacro calculations