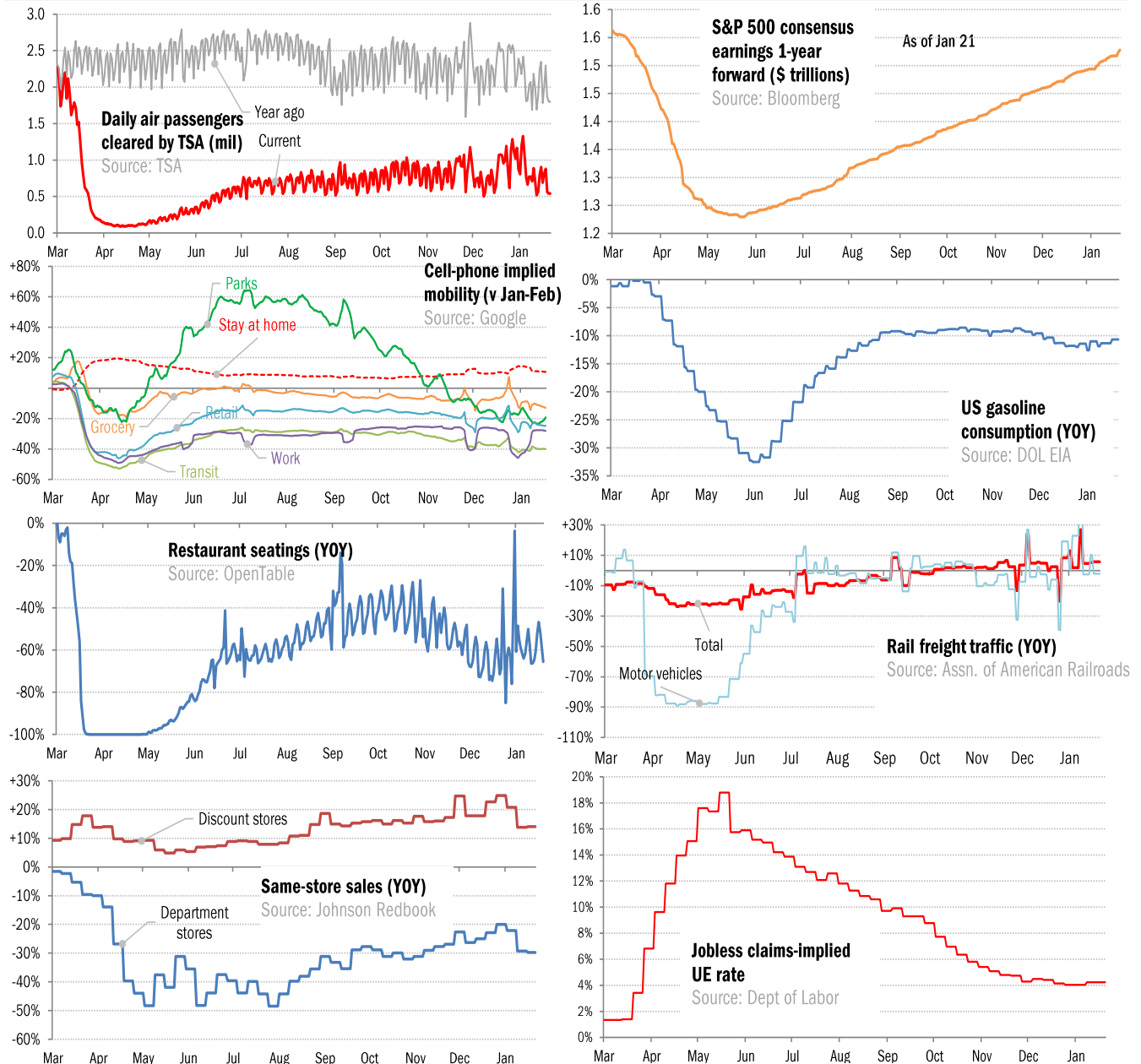


Data Insights: High-Frequency Post-Virus US Recovery Monitor

Thursday, January 21, 2021

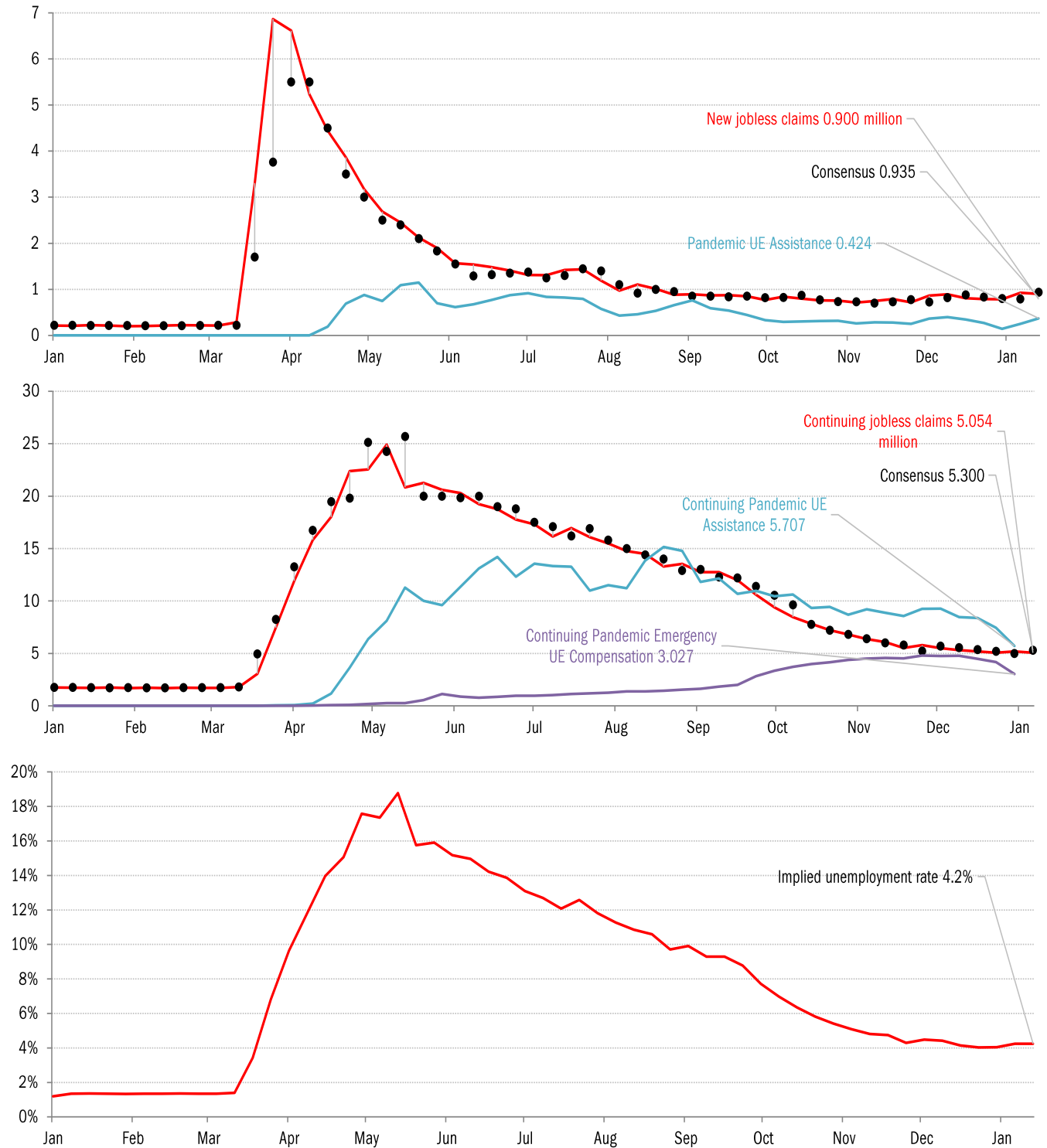
The US high-frequency macro data dashboard

(state level and other detail in subsequent charts)



Source: As indicated, TrendMacro calculations

High-frequency view of the US labor market: weekly unemployment claims (millions)

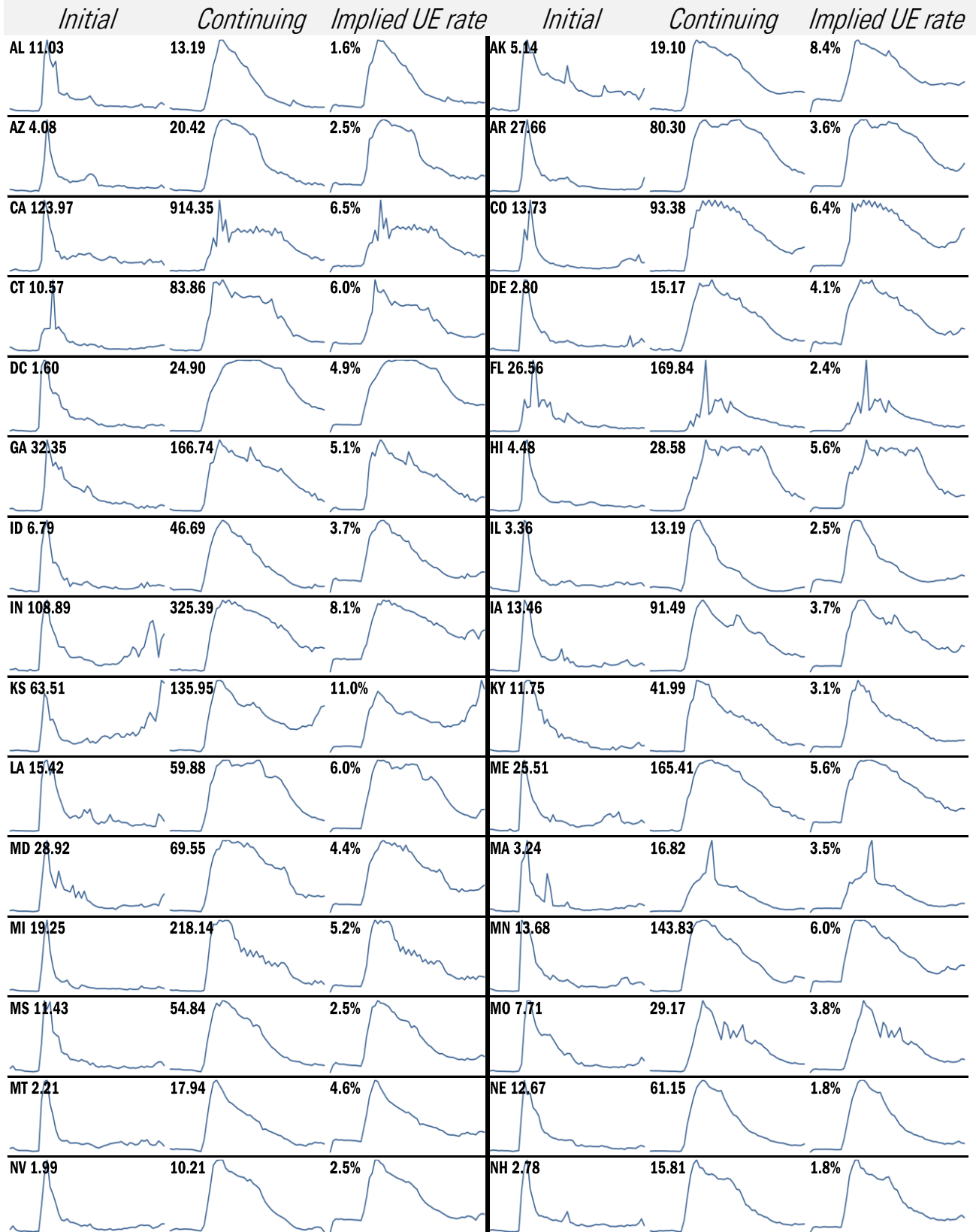


Source: Department of Labor, Bloomberg, TrendMacro calculations

For more information contact us:

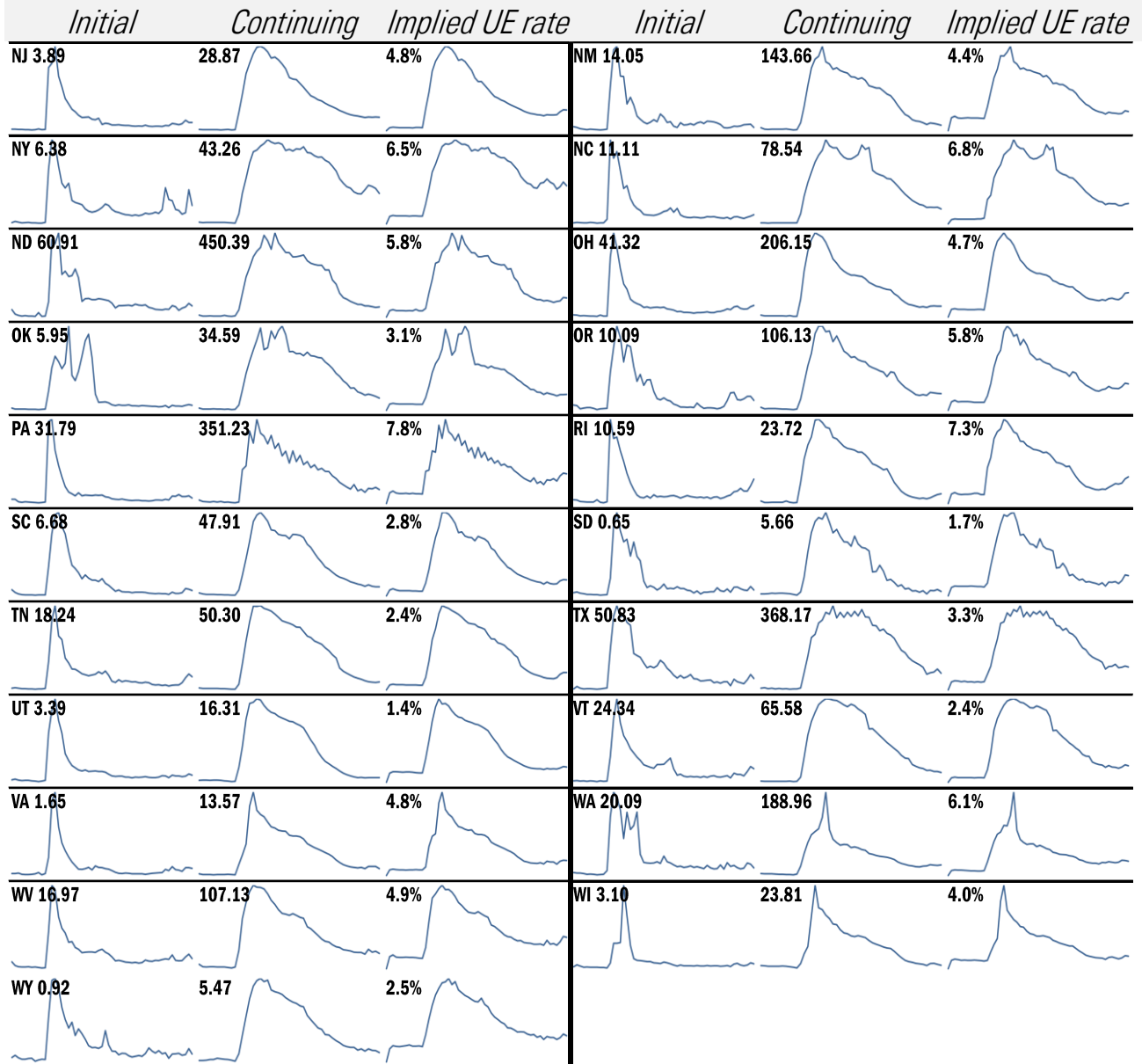
Donald Luskin: 312 273 6766 don@trendmacro.com
 Thomas Demas: 704 552 3625 tdemas@trendmacro.com

State by state unemployment insurance claims (thousands)



Source: Department of Labor, TrendMacro calculations

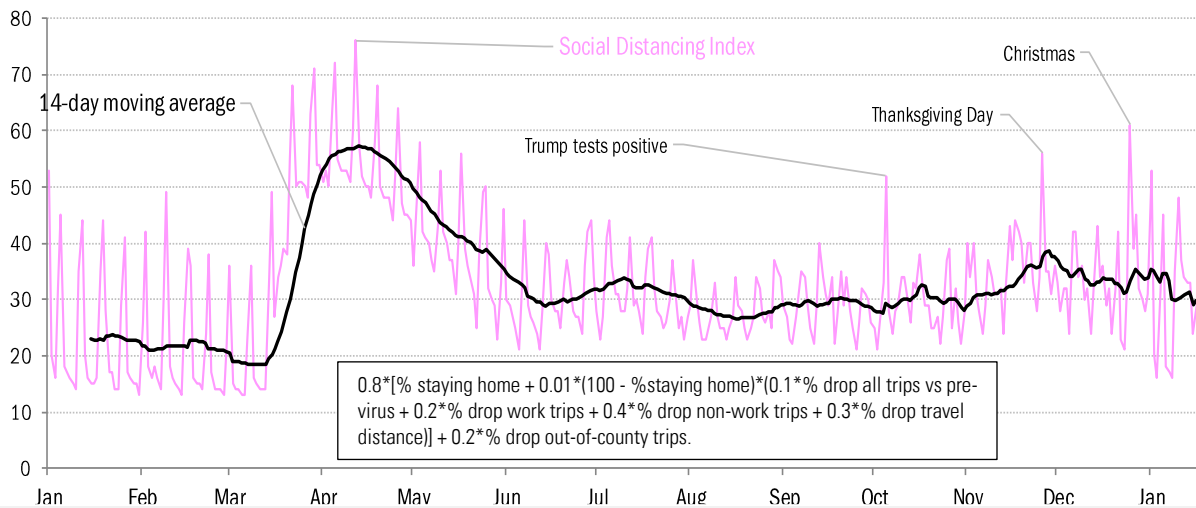
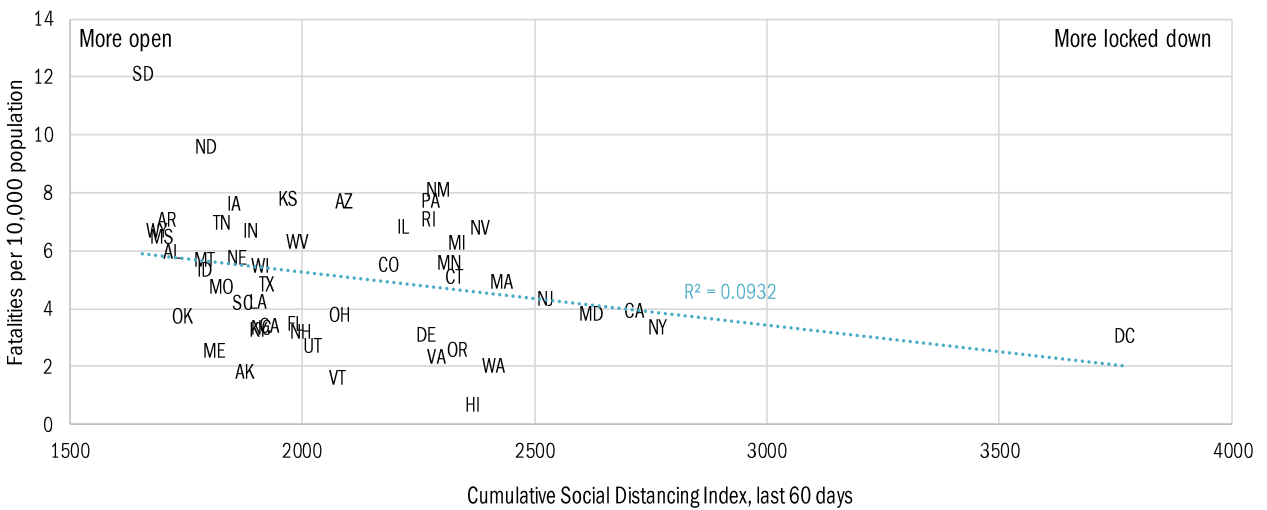
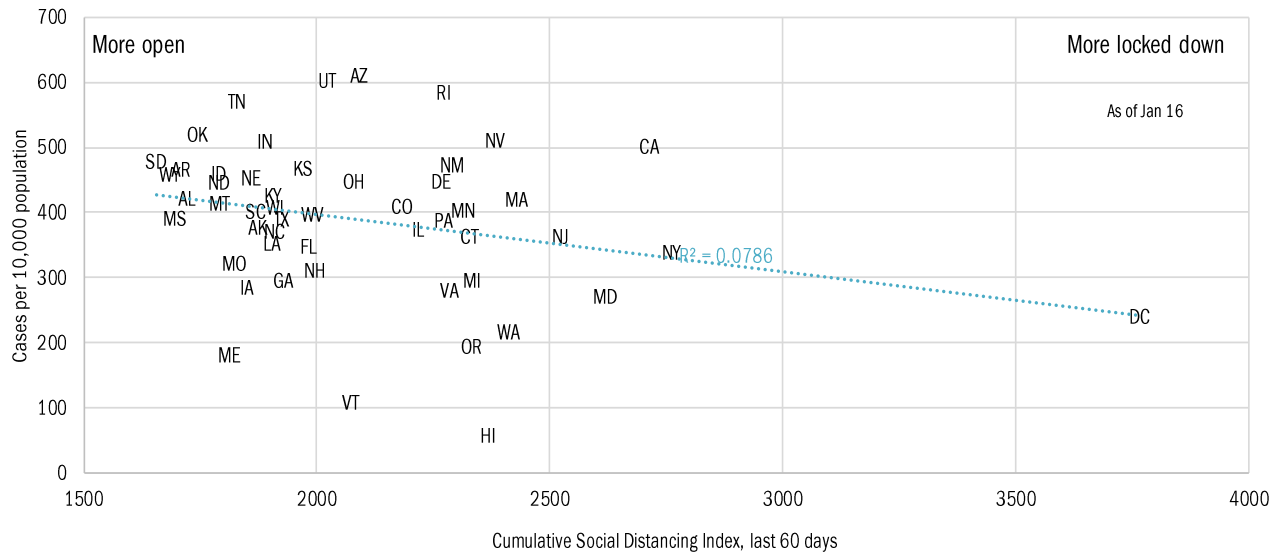
State by state unemployment insurance claims (thousands)



Source: Department of Labor, TrendMacro calculations

Locking down in the "dark winter"

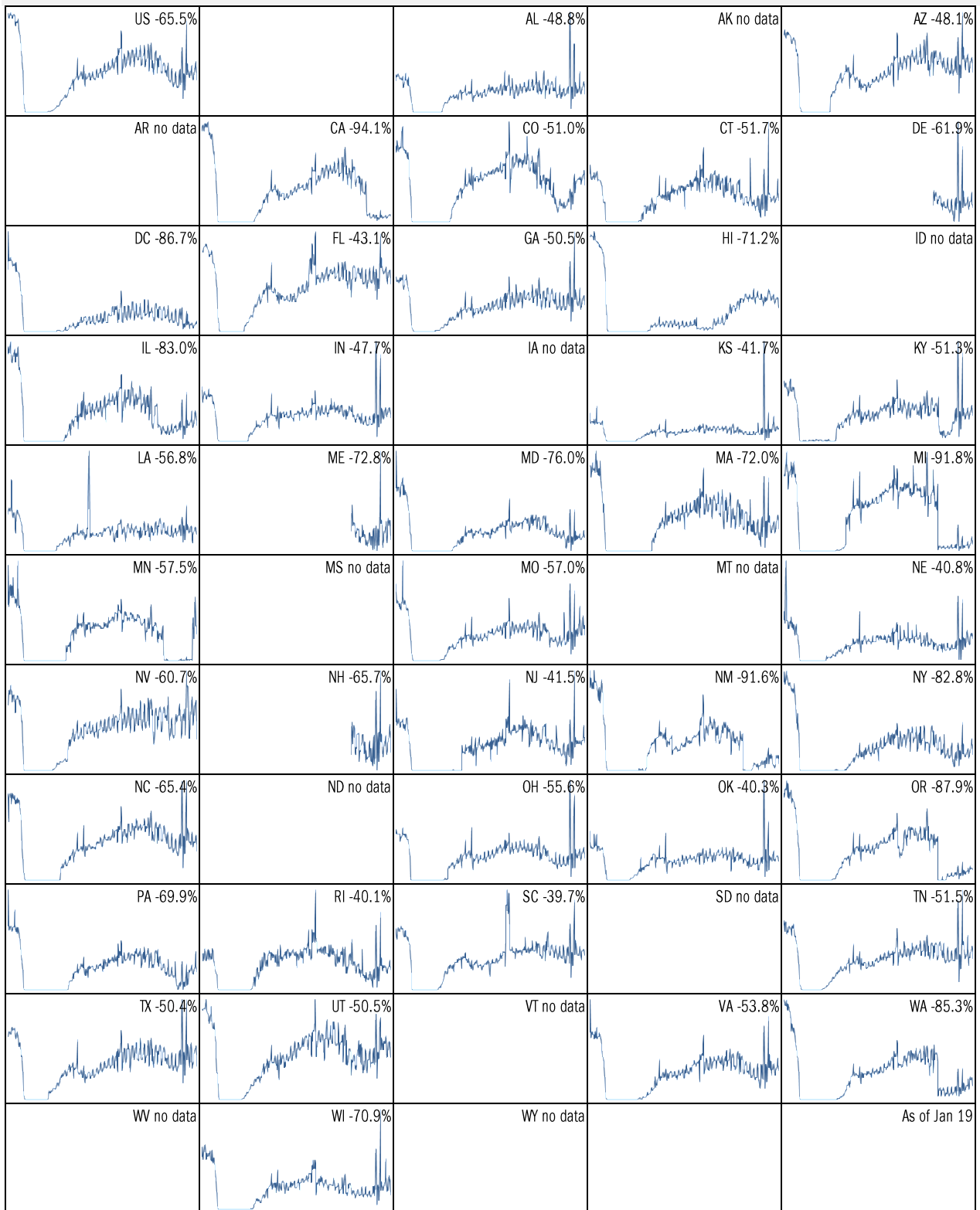
Covid-2019 fatalities and cases vs social distancing measured by cell-phone mobility data



Source: [University of Maryland COVID-19 Impact Analysis Platform](#), TrendMacro calculations

Make America eat again:

YOY change in seated diners in restaurants Feb 18 to present ■ Positive



Source: [Open Table](#), TrendMacro calculations

Make America move again: Mobility from Feb 5 vs Jan 3 – Feb 6 baseline ■ Positive

	<i>Retail/rec</i>	<i>Grocery/pharm</i>	<i>Parks</i>	<i>Transit stations</i>	<i>Workplaces</i>	<i>Time at home</i>
US -25		-13	-19	-40	-28	11
AL -17		-8	-19	-17	-22	8
AK -17		-10	-1	-32	-23	10
AZ -22		-14	-23	-29	-31	11
AR -16		-8	3	-10	-20	7
CA -36		-17	-20	-50	-38	14
CO -26		-12	-16	-42	-29	11
CT -24		-15	-9	-39	-28	11
DE -19		-10	-11	-43	-27	10
DC -57		-29	-50	-71	-51	18
FL -22		-14	-32	-38	-26	8
GA -20		-11	-21	-35	-27	10
HI -36		-24	-42	-58	-32	11
ID -10		-5	11	-17	-20	7
IL -31		-13	-32	-44	-29	12

Source: [Google Mobility Reports](https://www.google.com/covid19/mobility/), TrendMacro calculations

Make America move again: Mobility from Feb 5 vs Jan 3 – Feb 6 baseline ■ Positive

	<i>Retail/rec</i>	<i>Grocery/pharm</i>	<i>Parks</i>	<i>Transit stations</i>	<i>Workplaces</i>	<i>Residential</i>
IN -17		-10	-8	-17	-21	8
IA -18		-1	-8	-25	-20	9
KS -20		-13	-4	-14	-21	8
KY -21		-8	-9	-18	-25	9
LA -22		-9	-34	-25	-23	8
ME -22		-8	4	-30	-23	9
MD -27		-15	-4	-48	-34	14
MA -32		-18	-18	-59	-35	14
MI -31		-14	0	-37	-27	11
MN -26		-17	-5	-48	-29	13
MS -14		-11	-15	-3	-21	7
MO -19		-10	-14	-22	-22	9
MT -13		-6	-7	-12	-15	6
NE -19		-11	-16	-23	-21	9
NV -25		-14	-31	-44	-32	11

Source: [Google Mobility Reports](https://www.google.com/covid19/mobility/), TrendMacro calculations

Make America move again: Mobility from Feb 5 vs Jan 3 – Feb 6 baseline ■ Positive

	<i>Retail/rec</i>	<i>Grocery/pharm</i>	<i>Parks</i>	<i>Transit stations</i>	<i>Workplaces</i>	<i>Residential</i>
NH -21		-11	1	-35	-25	11
NJ -28		-12	-4	-47	-33	13
NM -28		-14	-20	-22	-31	12
NY -35		-16	-27	-51	-34	13
NC -22		-10	-11	-36	-27	10
ND -17		-17	-13	-27	-17	8
OH -21		-12	-4	-25	-23	9
OK -15		-8	-13	-10	-21	8
OR -28		-11	9	-39	-32	11
PA -26		-14	-11	-41	-28	11
RI -26		-15	16	-50	-28	11
SC -18		-9	-21	-18	-23	8
SD -13		0	0	-16	-15	8
TN -18		-9	-13	-23	-23	9
TX -21		-13	-27	-31	-27	10

Source: [Google Mobility Reports](https://www.google.com/covid19/mobility/), TrendMacro calculations

Make America move again: Mobility from Feb 5 vs Jan 3 – Feb 6 baseline ■ Positive

	<i>Retail/rec</i>	<i>Grocery/pharm</i>	<i>Parks</i>	<i>Transit stations</i>	<i>Workplaces</i>	<i>Residential</i>
UT -18		-10	5	-36	-27	9
VT -29		-17	-14	-47	-27	12
VA -25		-12	-5	-40	-31	12
WA -29		-14	4	-50	-34	12
WV -21		-11	-11	-22	-23	9
WI -25		-10	3	-29	-21	10
WY -19		-10	-9	-7	-15	6

Source: [Google Mobility Reports](#), TrendMacro calculations