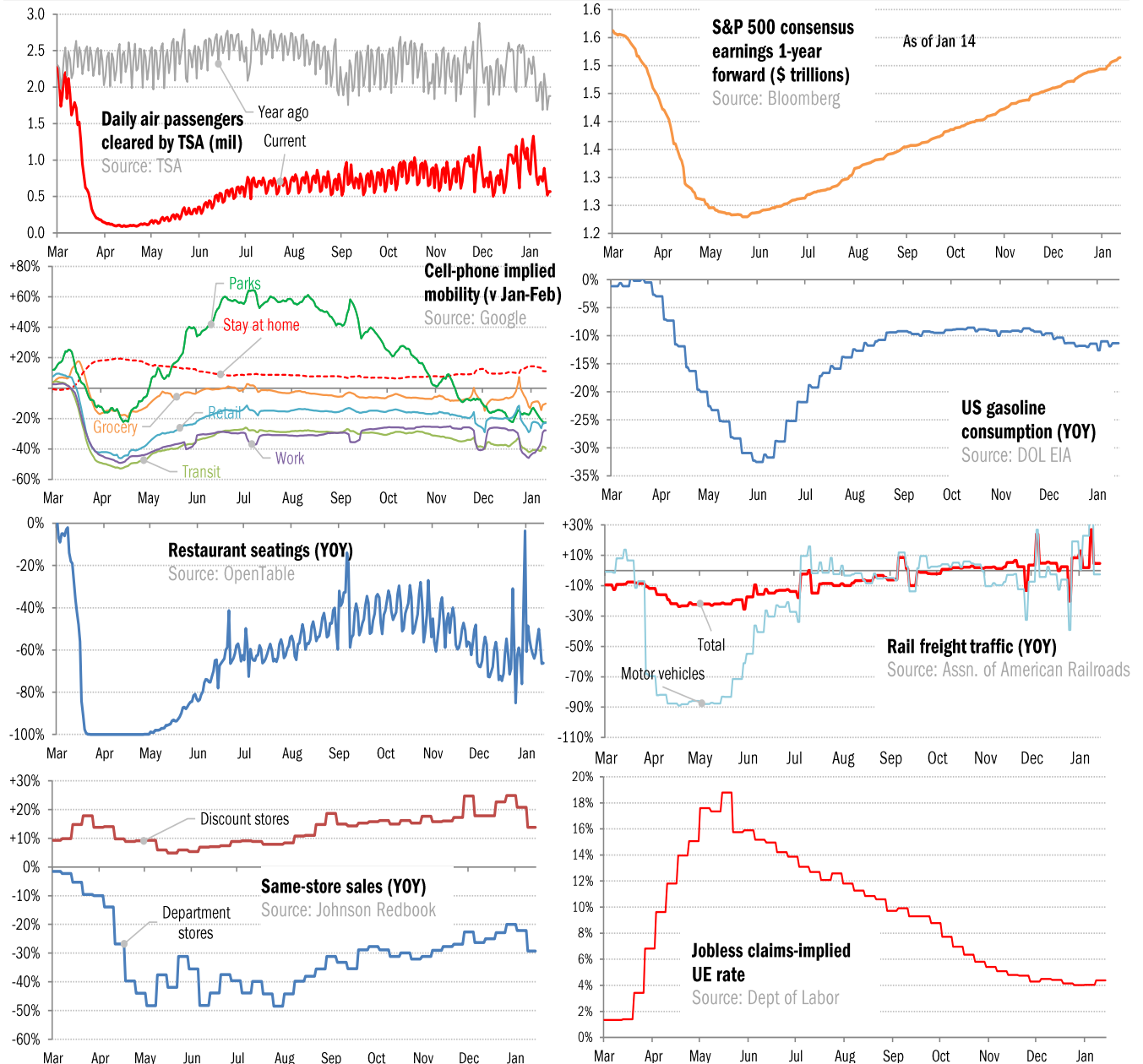


## Data Insights: High-Frequency Post-Virus US Recovery Monitor

Thursday, January 14, 2021

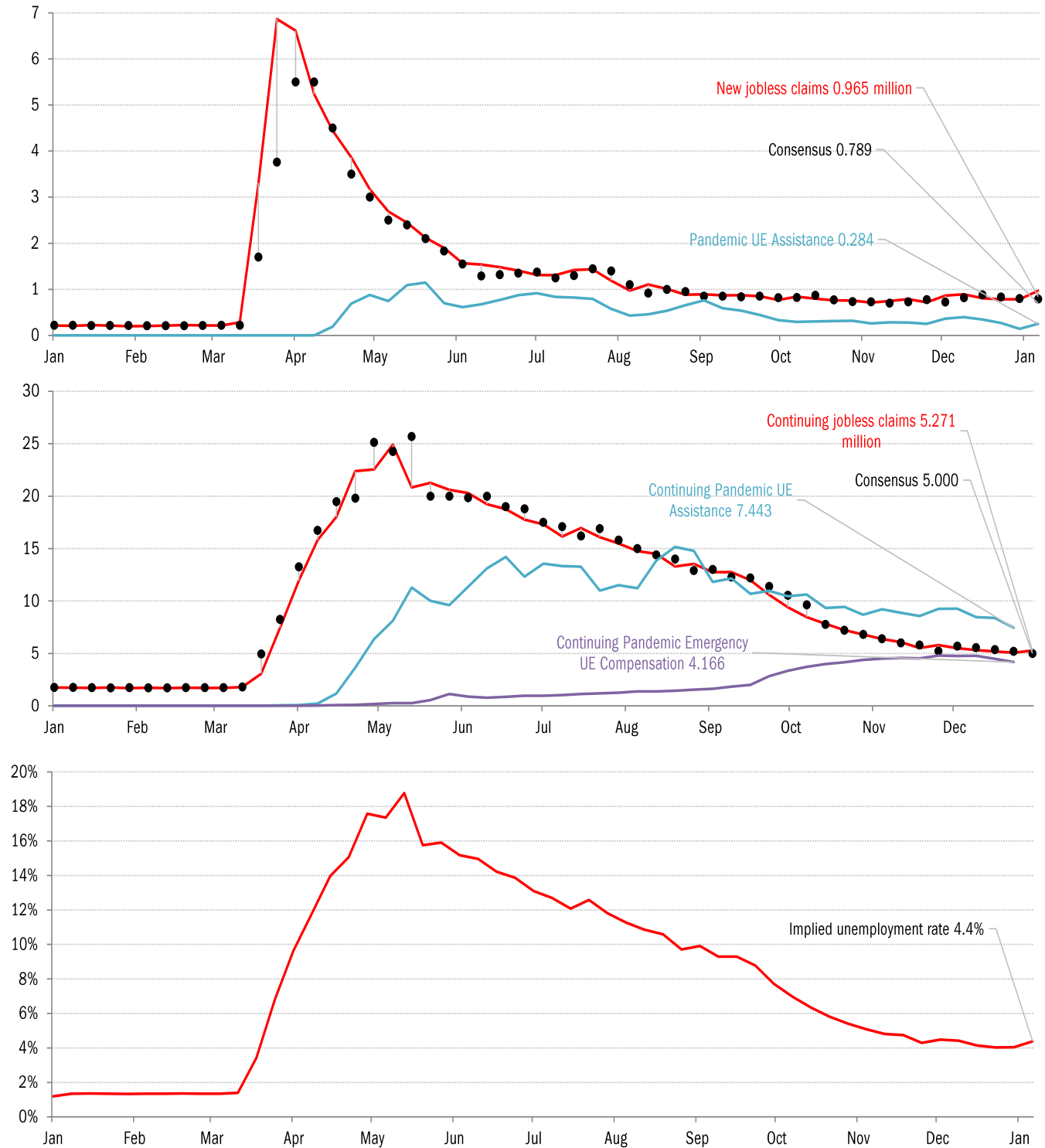
### The US high-frequency macro data dashboard

(state level and other detail in subsequent charts)



Source: As indicated, TrendMacro calculations

## High-frequency view of the US labor market: weekly unemployment claims (millions)

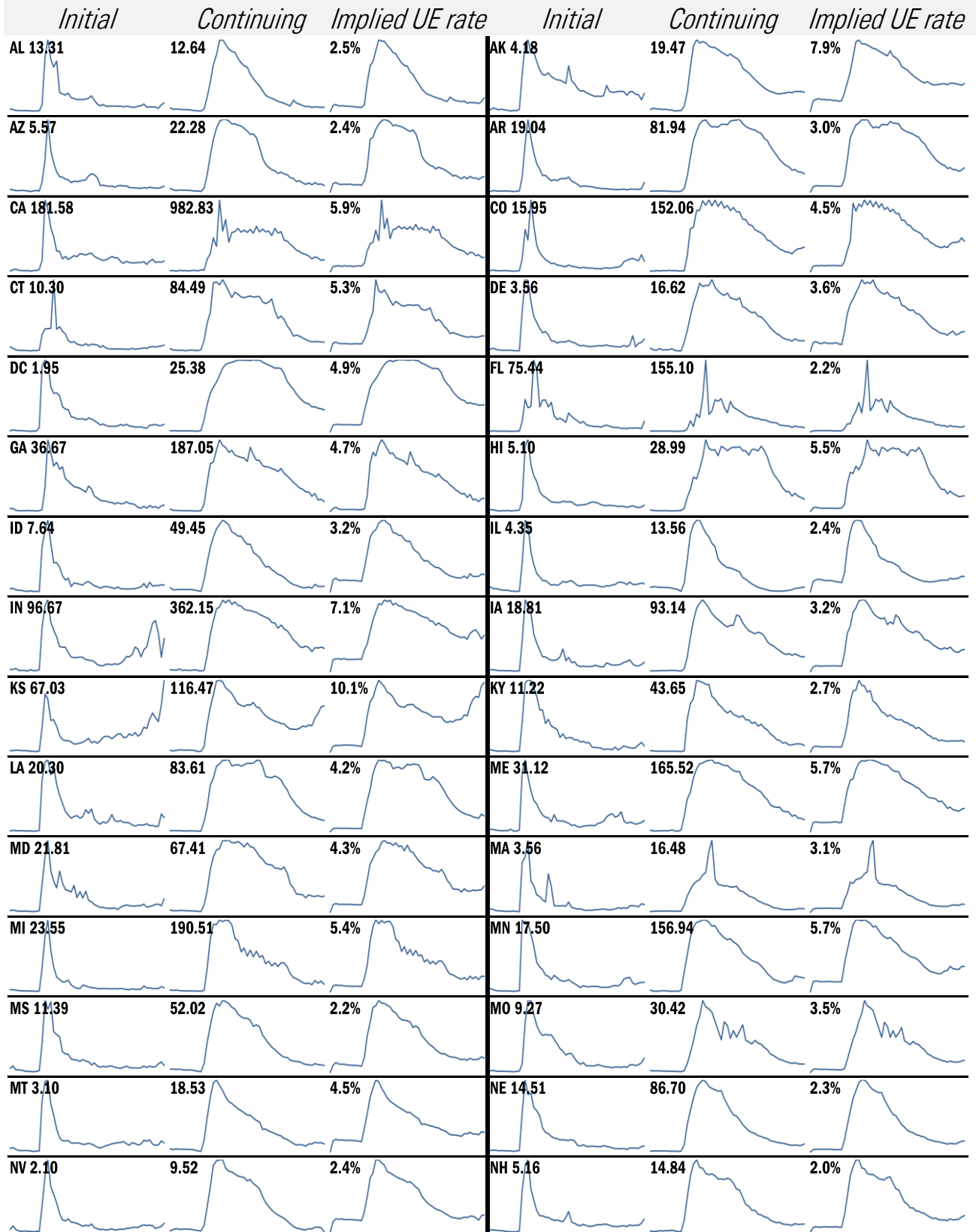


Source: Department of Labor, Bloomberg, TrendMacro calculations

### For more information contact us:

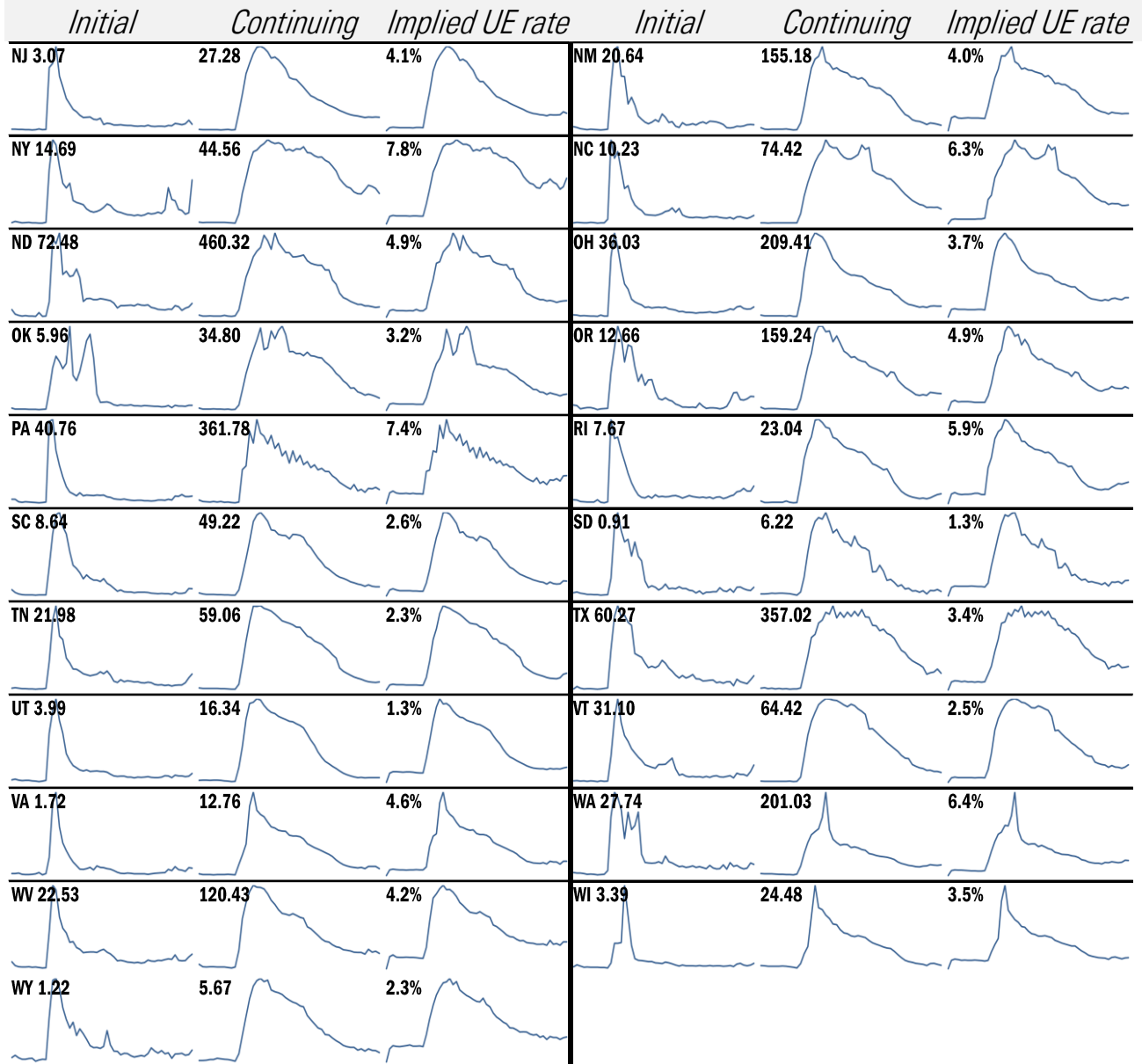
Donald Luskin: 312 273 6766 [don@trendmacro.com](mailto:don@trendmacro.com)  
 Thomas Demas: 704 552 3625 [tdemas@trendmacro.com](mailto:tdemas@trendmacro.com)

# State by state unemployment insurance claims (thousands)



Source: Department of Labor, TrendMacro calculations

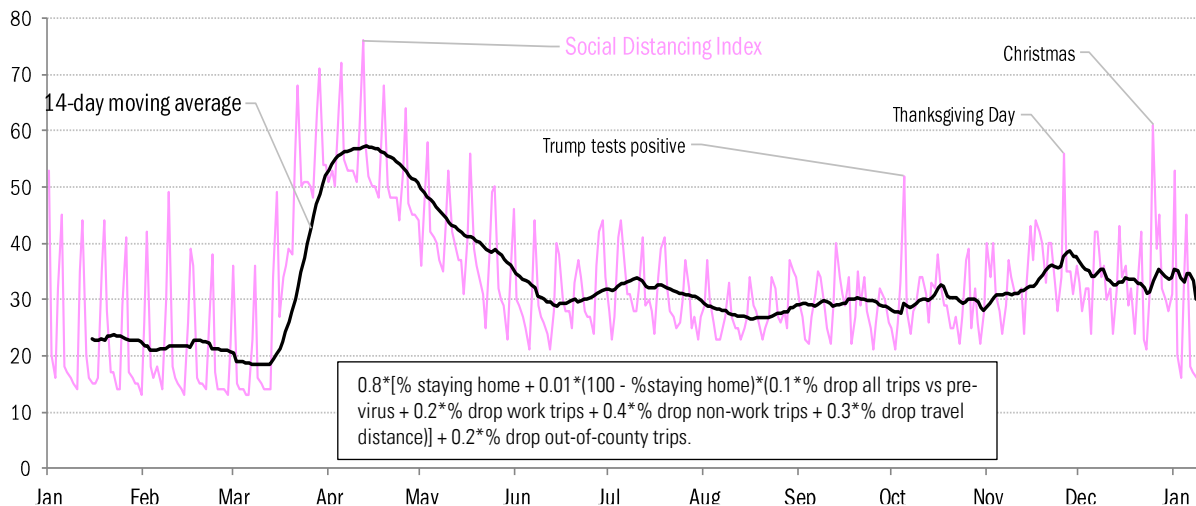
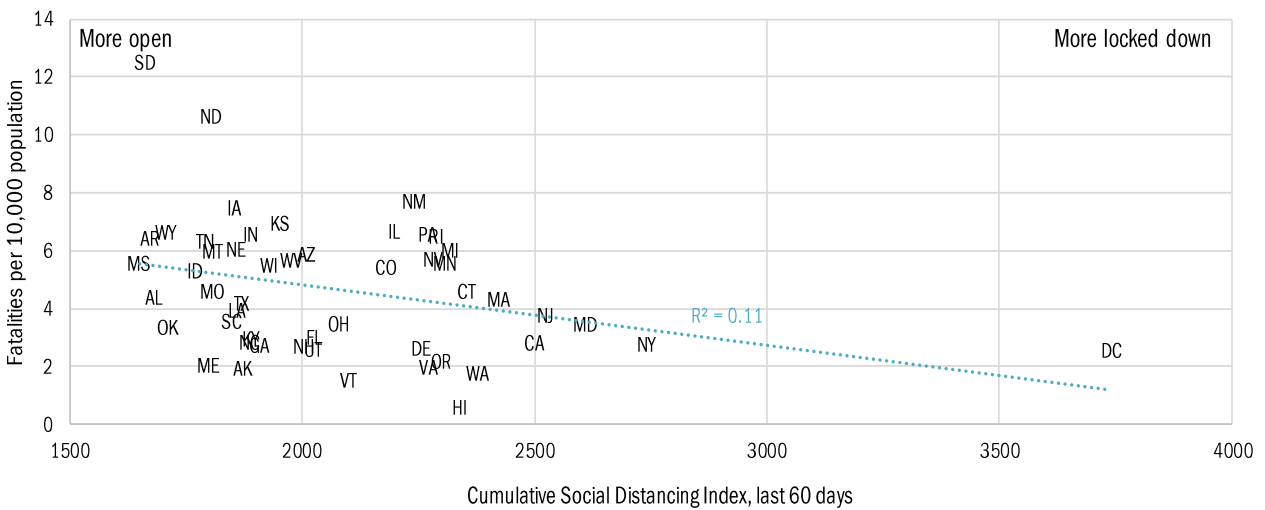
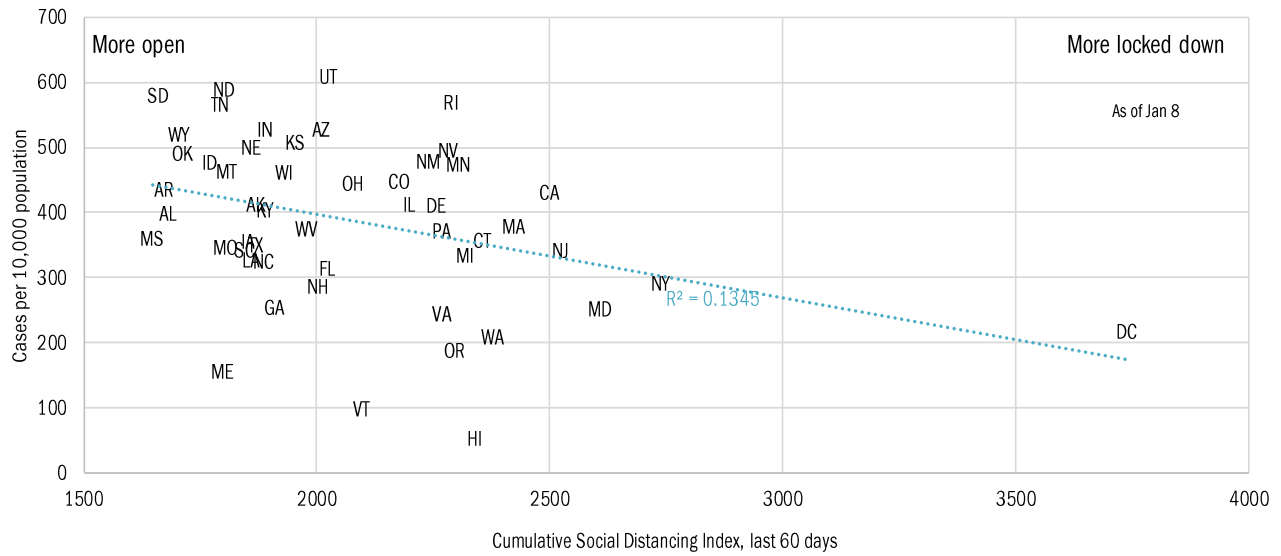
## State by state unemployment insurance claims (thousands)



Source: Department of Labor, TrendMacro calculations

# Assessing the costs of the "winter wave"

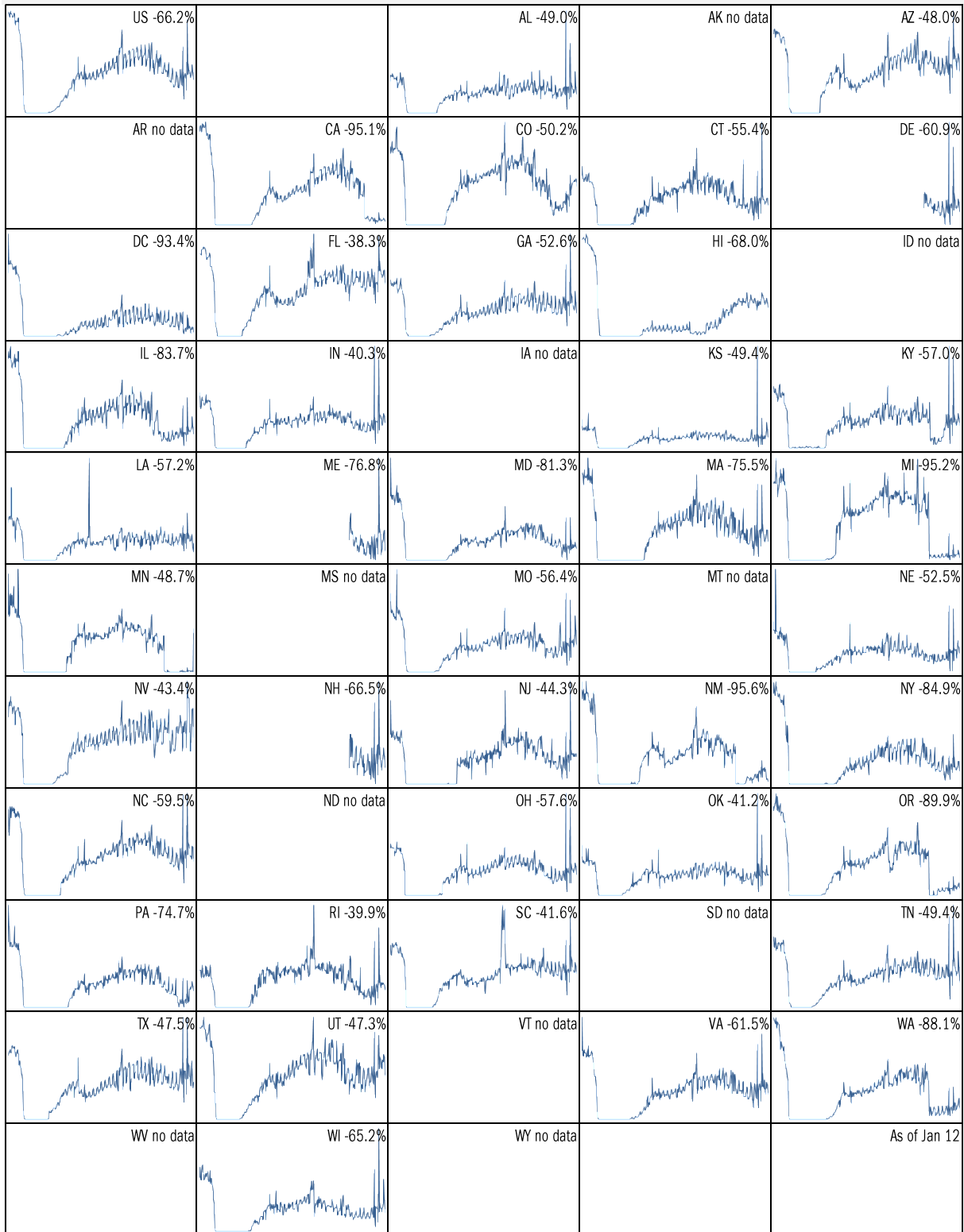
## Covid-2019 fatalities and cases vs social distancing measured by cell-phone data



Source: [University of Maryland COVID-19 Impact Analysis Platform](https://www.um.edu.edu/impact-analysis-platform/), TrendMacro calculations

# Make America eat again:

YOY change in seated diners in restaurants Feb 18 to present ■ Positive



Source: [Open Table](#), TrendMacro calculations

Make America move again: Mobility from Feb 5 vs Jan 3 – Feb 6 baseline ■ Positive

	<i>Retail/rec</i>	<i>Grocery/pharm</i>	<i>Parks</i>	<i>Transit stations</i>	<i>Workplaces</i>	<i>Time at home</i>
<b>US -23</b>		-10	-23	-39	-28	11
<b>AL -13</b>		-4	-21	-14	-21	8
<b>AK -15</b>		-7	-5	-28	-22	10
<b>AZ -20</b>		-12	-28	-28	-31	11
<b>AR -11</b>		-3	-4	-10	-20	8
<b>CA -34</b>		-15	-28	-50	-38	15
<b>CO -27</b>		-11	-21	-41	-30	12
<b>CT -22</b>		-12	-8	-38	-28	12
<b>DE -18</b>		-8	-18	-44	-28	11
<b>DC -56</b>		-27	-33	-69	-51	19
<b>FL -19</b>		-11	-32	-36	-25	8
<b>GA -16</b>		-7	-20	-33	-27	10
<b>HI -34</b>		-20	-42	-55	-31	12
<b>ID -7</b>		-1	7	-16	-19	7
<b>IL -27</b>		-9	-31	-43	-29	12

Source: [Google Mobility Reports](https://www.google.com/covid19/mobility/), TrendMacro calculations

Make America move again: Mobility from Feb 5 vs Jan 3 – Feb 6 baseline ■ Positive

	<i>Retail/rec</i>	<i>Grocery/pharm</i>	<i>Parks</i>	<i>Transit stations</i>	<i>Workplaces</i>	<i>Residential</i>
<b>IN -14</b>						
		-7	-8	-17	-20	8
<b>IA -11</b>						
		6	-6	-22	-16	8
<b>KS -15</b>						
		-9	-11	-13	-21	9
<b>KY -18</b>						
		-5	-10	-16	-23	9
<b>LA -18</b>						
		-4	-36	-24	-22	8
<b>ME -17</b>						
		-4	5	-23	-21	9
<b>MD -26</b>						
		-13	-13	-47	-34	15
<b>MA -31</b>						
		-15	-16	-58	-35	14
<b>MI -27</b>						
		-10	1	-36	-26	11
<b>MN -28</b>						
		-12	1	-48	-29	13
<b>MS -10</b>						
		-5	-17	-2	-19	7
<b>MO -13</b>						
		-6	-16	-21	-20	8
<b>MT -9</b>						
		-1	-2	-8	-14	6
<b>NE -13</b>						
		-5	-19	-21	-19	9
<b>NV -23</b>						
		-11	-38	-44	-31	11

Source: [Google Mobility Reports](https://www.google.com/covid19/mobility/), TrendMacro calculations



Make America move again: Mobility from Feb 5 vs Jan 3 – Feb 6 baseline ■ Positive

	<i>Retail/rec</i>	<i>Grocery/pharm</i>	<i>Parks</i>	<i>Transit stations</i>	<i>Workplaces</i>	<i>Residential</i>
<b>NH -21</b>						
		-9	-7	-31	-26	12
<b>NJ -29</b>						
		-12	-12	-46	-34	14
<b>NM -26</b>						
		-11	-19	-17	-32	12
<b>NY -35</b>						
		-14	-28	-50	-34	13
<b>NC -20</b>						
		-6	-13	-32	-28	10
<b>ND -14</b>						
		-14	-9	-25	-17	8
<b>OH -20</b>						
		-11	-5	-24	-25	10
<b>OK -12</b>						
		-6	-22	-9	-22	9
<b>OR -27</b>						
		-10	-5	-38	-32	12
<b>PA -26</b>						
		-12	-20	-40	-31	12
<b>RI -26</b>						
		-12	9	-48	-31	12
<b>SC -14</b>						
		-7	-18	-9	-25	9
<b>SD -8</b>						
		3	12	-10	-13	7
<b>TN -15</b>						
		-6	-6	-19	-25	9
<b>TX -19</b>						
		-11	-25	-28	-28	11

Source: [Google Mobility Reports](https://www.google.com/covid19/mobility/), TrendMacro calculations

Make America move again: Mobility from Feb 5 vs Jan 3 – Feb 6 baseline ■ Positive

	<i>Retail/rec</i>	<i>Grocery/pharm</i>	<i>Parks</i>	<i>Transit stations</i>	<i>Workplaces</i>	<i>Residential</i>
<b>UT -18</b>		-9	-3	-34	-27	10
<b>VT -26</b>		-15	-13	-44	-27	12
<b>VA -24</b>		-10	-11	-35	-31	13
<b>WA -29</b>		-13	-14	-49	-35	13
<b>WV -14</b>		-5	-11	-16	-22	8
<b>WI -22</b>		-8	6	-28	-22	10
<b>WY -16</b>		-6	-10	-6	-16	7

Source: [Google Mobility Reports](https://www.google.com/covid19/mobility/), TrendMacro calculations