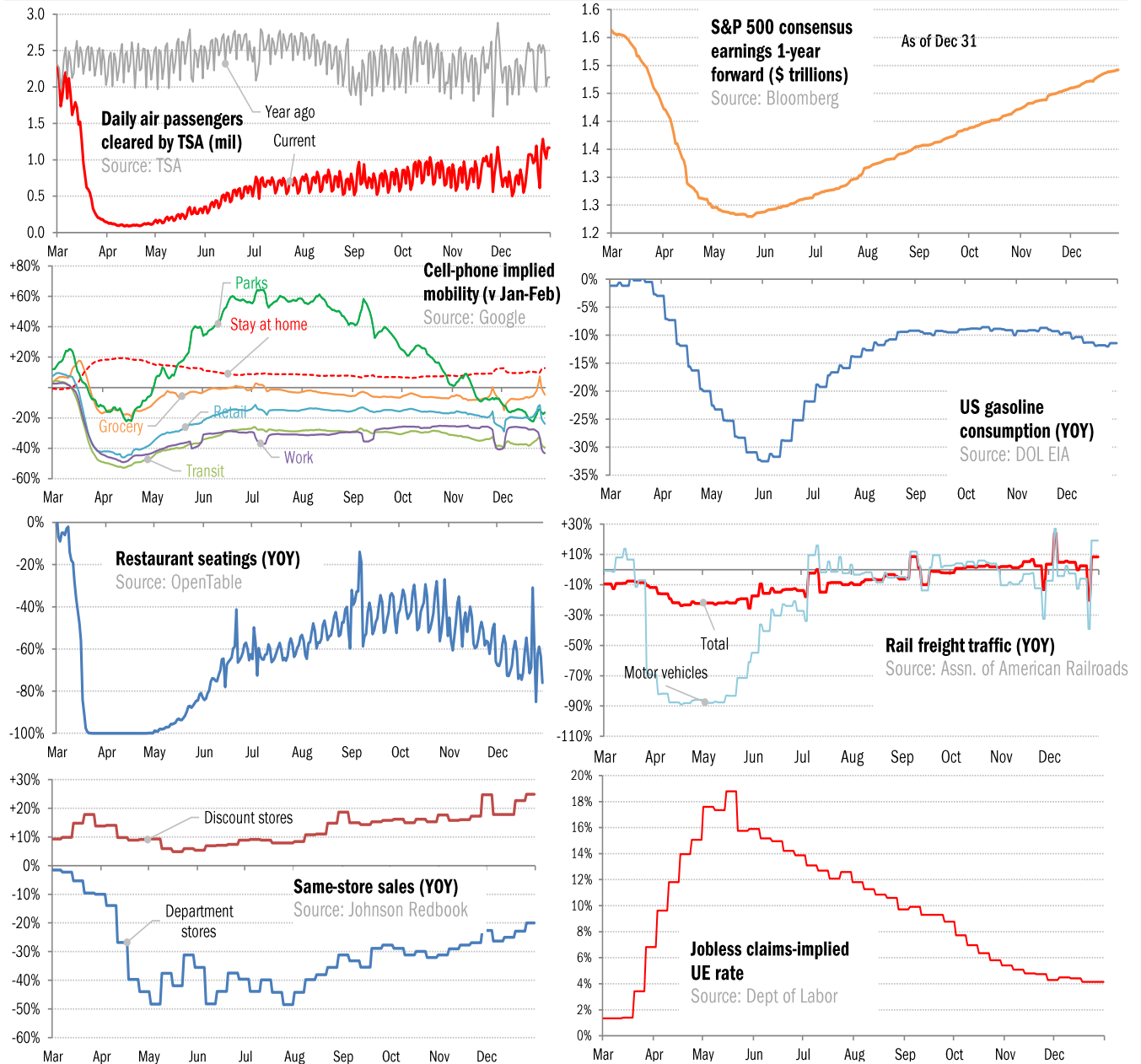


Data Insights: High-Frequency Post-Virus US Recovery Monitor

Thursday, December 31, 2020

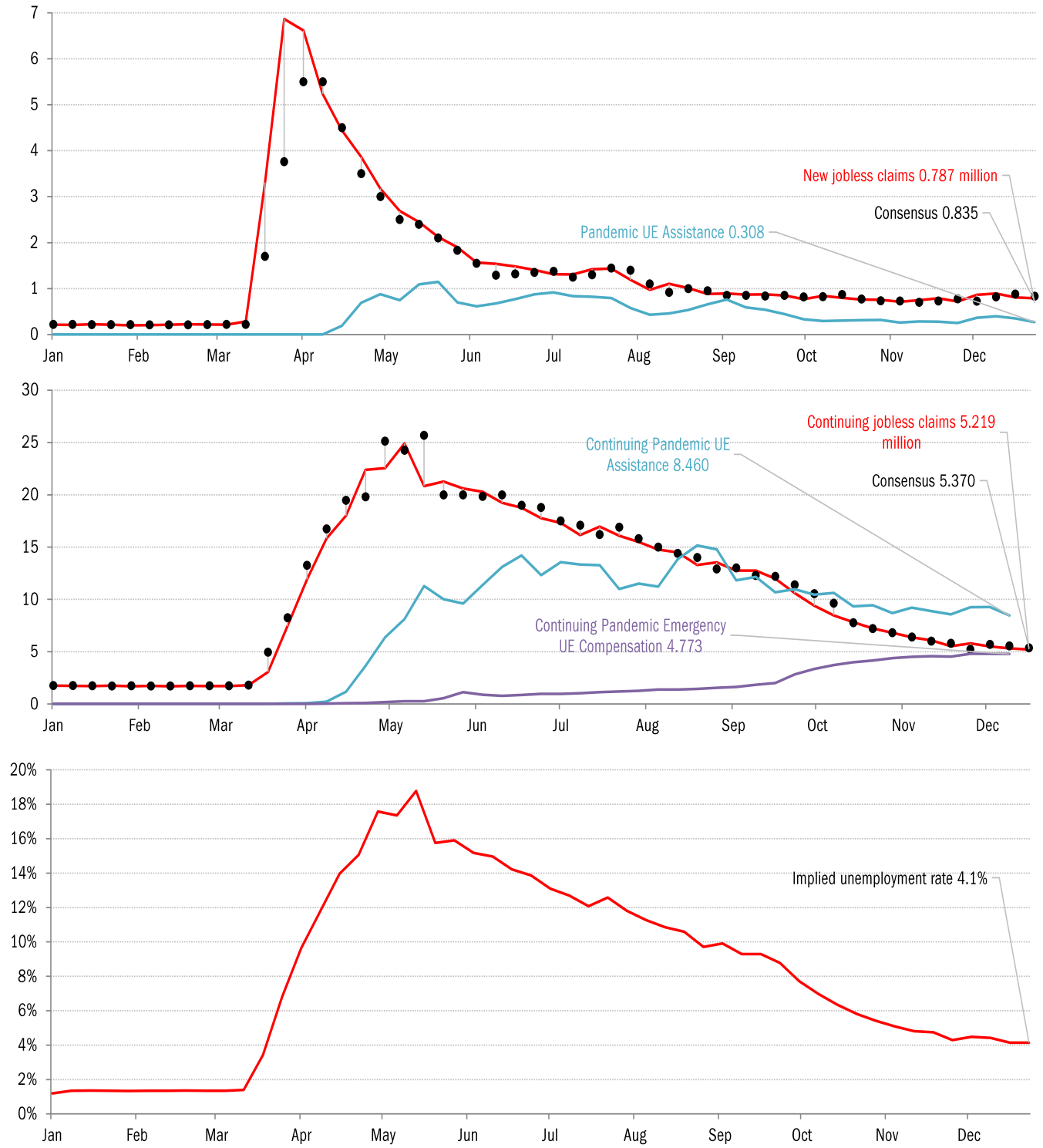
The US high-frequency macro data dashboard

(state level and other detail in subsequent charts)



Source: As indicated, TrendMacro calculations

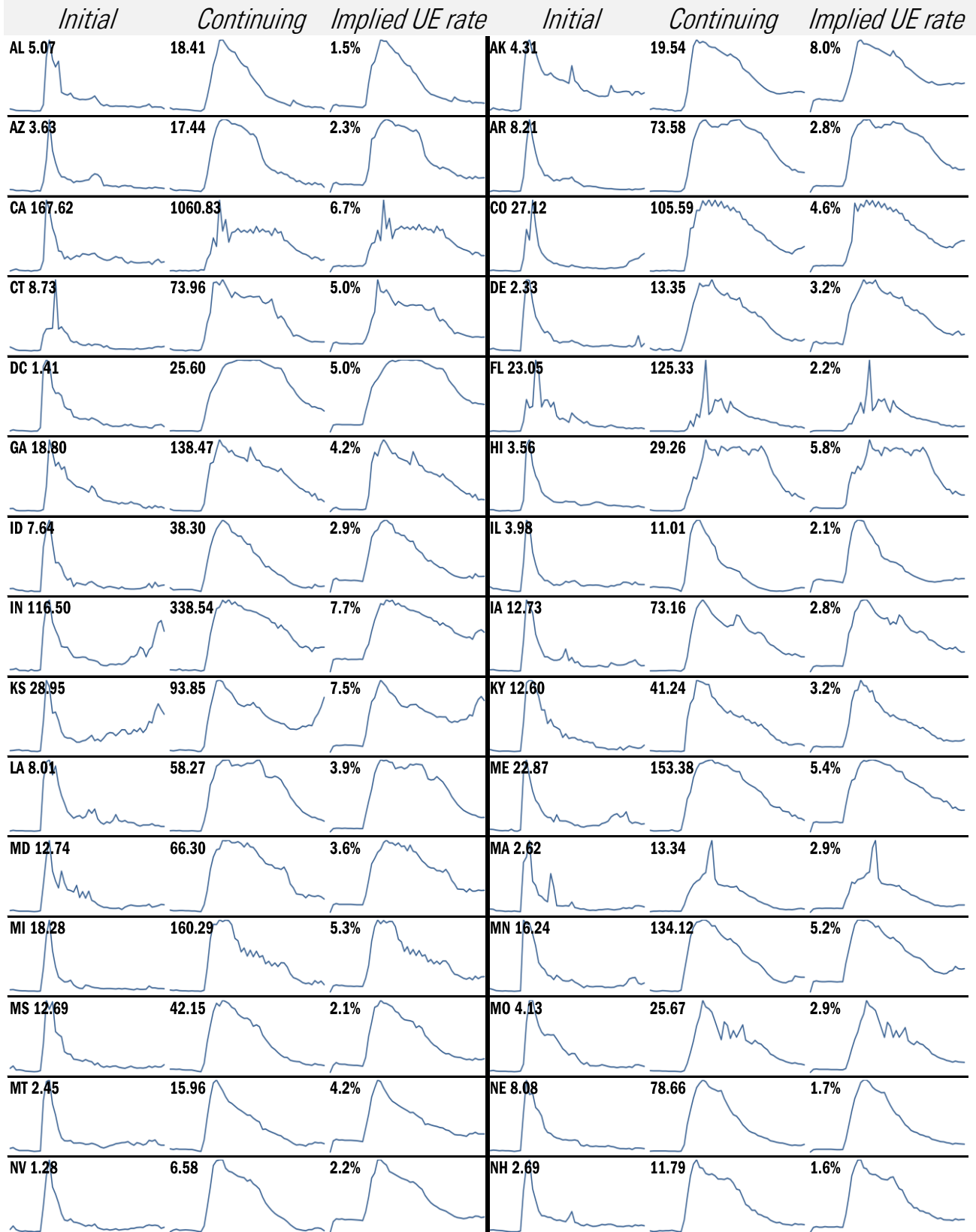
High-frequency view of the US labor market: weekly unemployment claims (millions)



Source: Department of Labor, Bloomberg, TrendMacro calculations

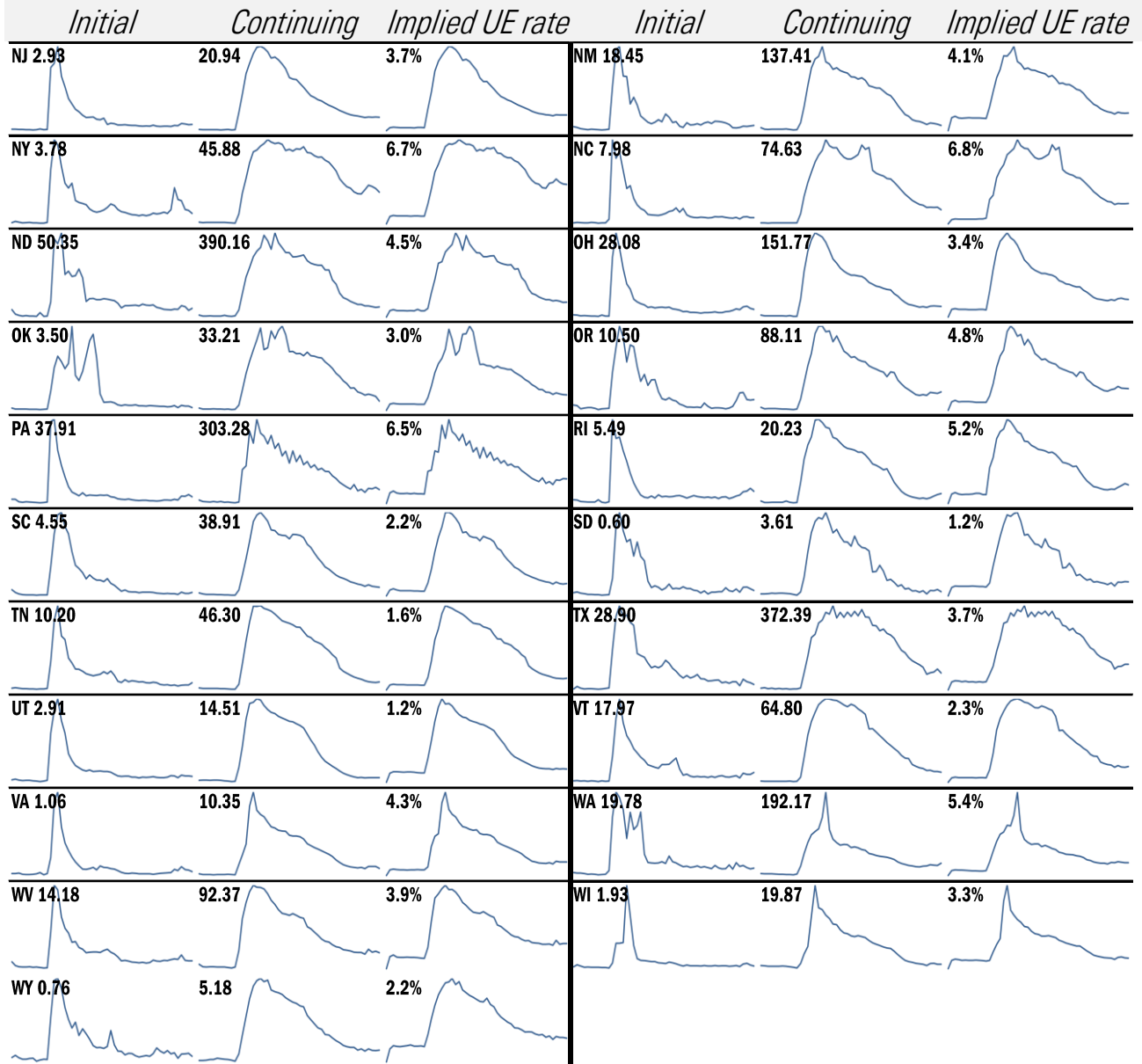
For more information contact us:
 Donald Luskin: 312 273 6766 don@trendmacro.com
 Thomas Demas: 704 552 3625 tdemas@trendmacro.com

State by state unemployment insurance claims (thousands)



Source: Department of Labor, TrendMacro calculations

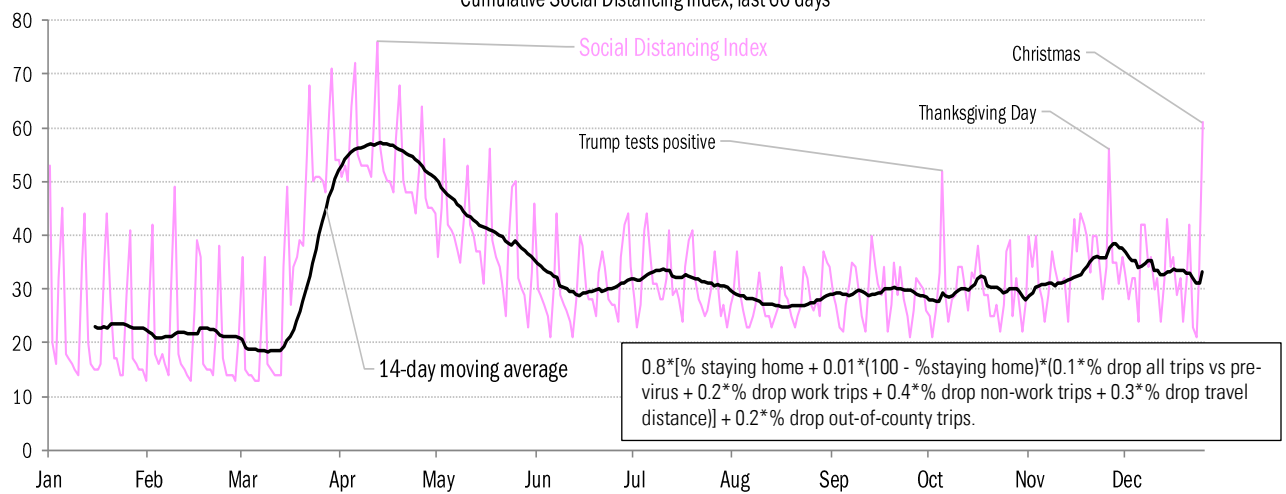
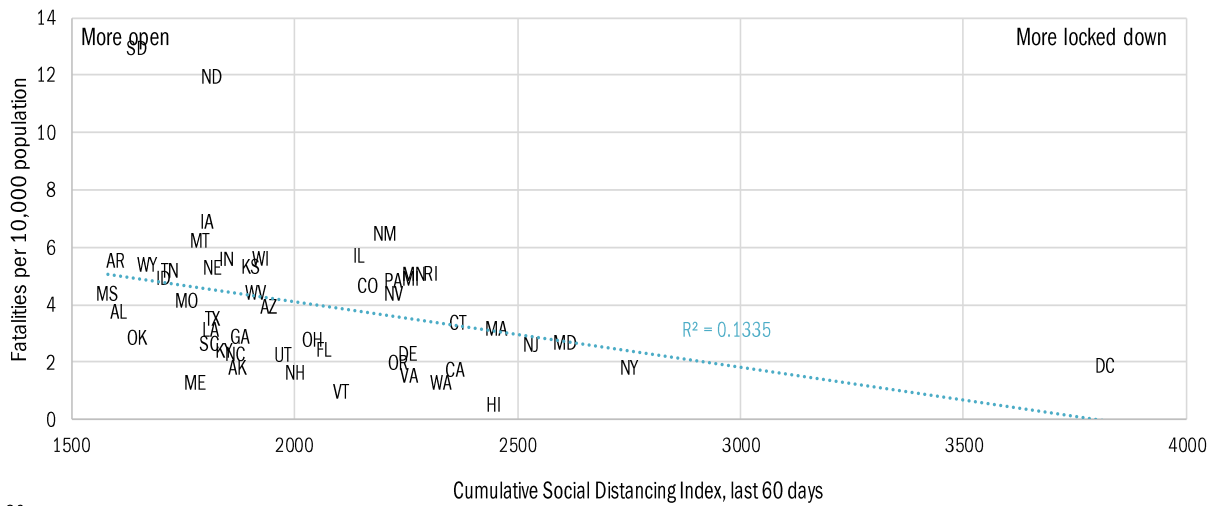
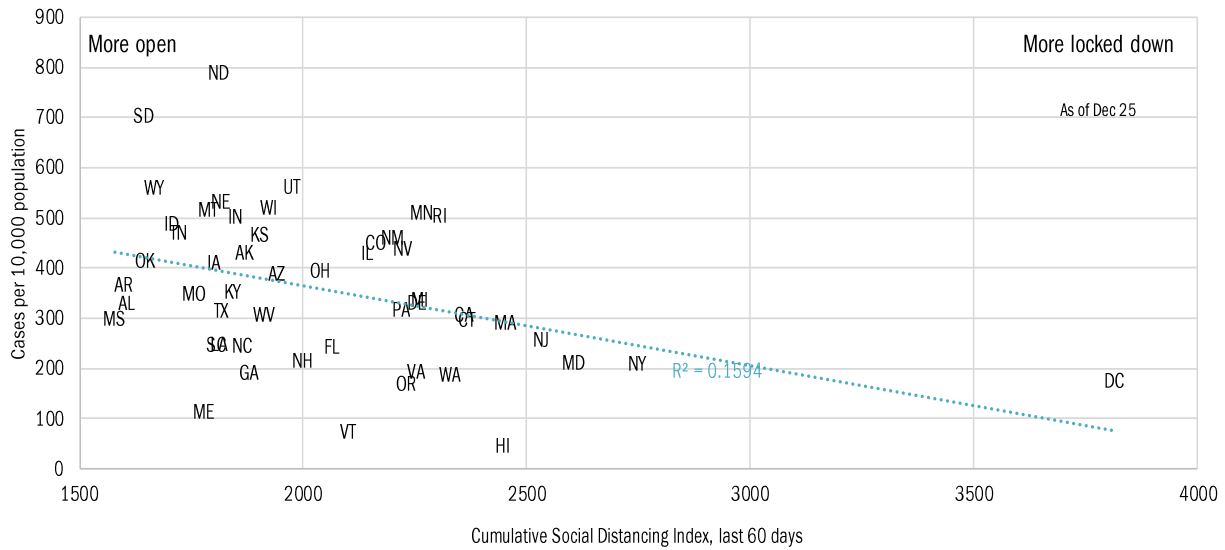
State by state unemployment insurance claims (thousands)



Source: Department of Labor, TrendMacro calculations

Assessing the costs of the "winter wave"

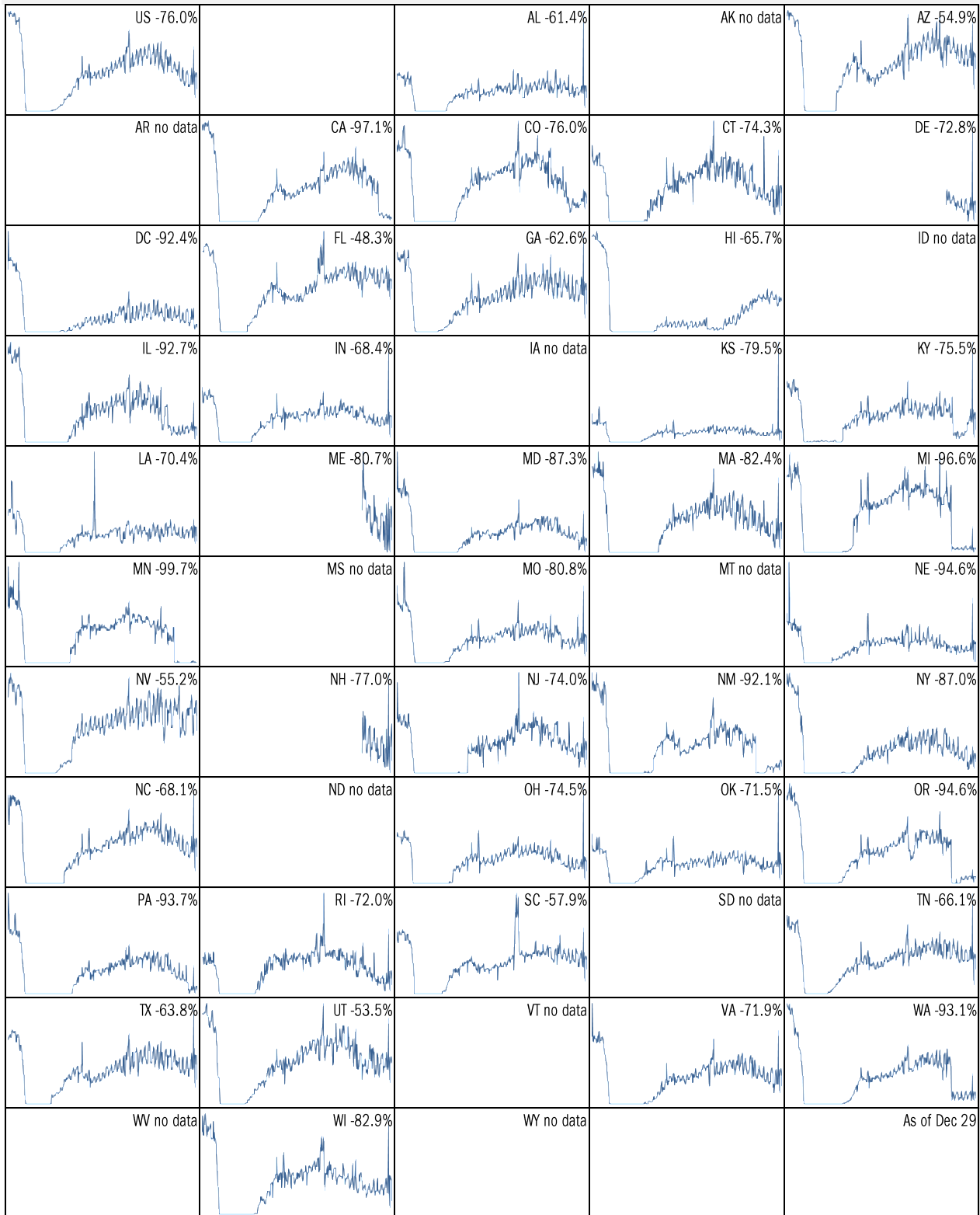
Covid-2019 fatalities and cases vs social distancing measured by cell-phone data



Source: [University of Maryland COVID-19 Impact Analysis Platform](#), TrendMacro calculations

Make America eat again:

YOY change in seated diners in restaurants Feb 18 to present ■ Positive



Source: [Open Table](#), TrendMacro calculations

Make America move again: Mobility from Feb 5 vs Jan 3 – Feb 6 baseline ■ Positive

	<i>Retail/rec</i>	<i>Grocery/pharm</i>	<i>Parks</i>	<i>Transit stations</i>	<i>Workplaces</i>	<i>Time at home</i>
US -24		-5	-16	-39	-43	13
AL -18		-1	-9	-12	-41	11
AK -20		-3	2	-32	-39	13
AZ -22		-7	-25	-28	-44	12
AR -15		-1	25	-14	-41	10
CA -34		-10	-26	-51	-48	16
CO -28		-4	0	-36	-45	14
CT -19		-3	-13	-34	-41	14
DE -17		-2	-13	-42	-40	13
DC -58		-31	-53	-74	-54	18
FL -22		-7	-27	-32	-41	10
GA -19		-3	-12	-31	-44	12
HI -33		-15	-40	-56	-43	14
ID -11		5	25	-16	-40	10
IL -26		-1	-18	-44	-44	14

Source: [Google Mobility Reports](https://www.google.com/covid19/mobility/), TrendMacro calculations

Make America move again: Mobility from Feb 5 vs Jan 3 – Feb 6 baseline ■ Positive

	<i>Retail/rec</i>	<i>Grocery/pharm</i>	<i>Parks</i>	<i>Transit stations</i>	<i>Workplaces</i>	<i>Residential</i>
IN -17						
		0	7	-22	-42	12
IA -17						
		10	1	-25	-37	11
KS -17						
		-2	25	-15	-41	11
KY -22						
		-2	2	-17	-41	11
LA -20						
		-2	-30	-25	-39	10
ME -17						
		1	5	-22	-36	11
MD -25						
		-8	-15	-47	-44	16
MA -27						
		-9	-18	-58	-46	15
MI -29						
		-4	4	-39	-45	14
MN -34						
		-10	-13	-48	-45	16
MS -14						
		-3	-5	-5	-40	10
MO -16						
		2	12	-23	-40	10
MT -15						
		0	1	-8	-34	10
NE -18						
		1	-10	-25	-40	13
NV -23						
		-7	-33	-40	-42	12

Source: [Google Mobility Reports](https://www.google.com/covid19/mobility/), TrendMacro calculations

Make America move again: Mobility from Feb 5 vs Jan 3 – Feb 6 baseline ■ Positive

	<i>Retail/rec</i>	<i>Grocery/pharm</i>	<i>Parks</i>	<i>Transit stations</i>	<i>Workplaces</i>	<i>Residential</i>
NH -14		4	-3	-27	-40	14
NJ -23		-3	-13	-45	-44	15
NM -30		-7	-14	-21	-43	14
NY -32		-8	-26	-51	-43	14
NC -21		-1	-5	-33	-44	12
ND -25		-14	-19	-31	-38	12
OH -22		-4	2	-29	-42	13
OK -15		0	7	-11	-39	10
OR -27		-4	11	-38	-44	12
PA -28		-6	-20	-45	-44	14
RI -23		-4	3	-53	-42	14
SC -16		-2	-12	-8	-42	11
SD -18		10	15	-14	-36	12
TN -19		-2	5	-23	-43	11
TX -20		-5	-16	-28	-44	13

Source: [Google Mobility Reports](https://www.google.com/covid19/mobility/), TrendMacro calculations

Make America move again: Mobility from Feb 5 vs Jan 3 – Feb 6 baseline ■ Positive

	<i>Retail/rec</i>	<i>Grocery/pharm</i>	<i>Parks</i>	<i>Transit stations</i>	<i>Workplaces</i>	<i>Residential</i>
UT -17		-1	13	-37	-46	12
VT -23		-8	-5	-48	-40	14
VA -23		-4	-6	-39	-45	14
WA -28		-6	3	-50	-46	14
WV -21		-4	-7	-21	-37	11
WI -23		0	10	-33	-39	13
WY -21		-2	-7	-16	-39	10

Source: [Google Mobility Reports](#), TrendMacro calculations