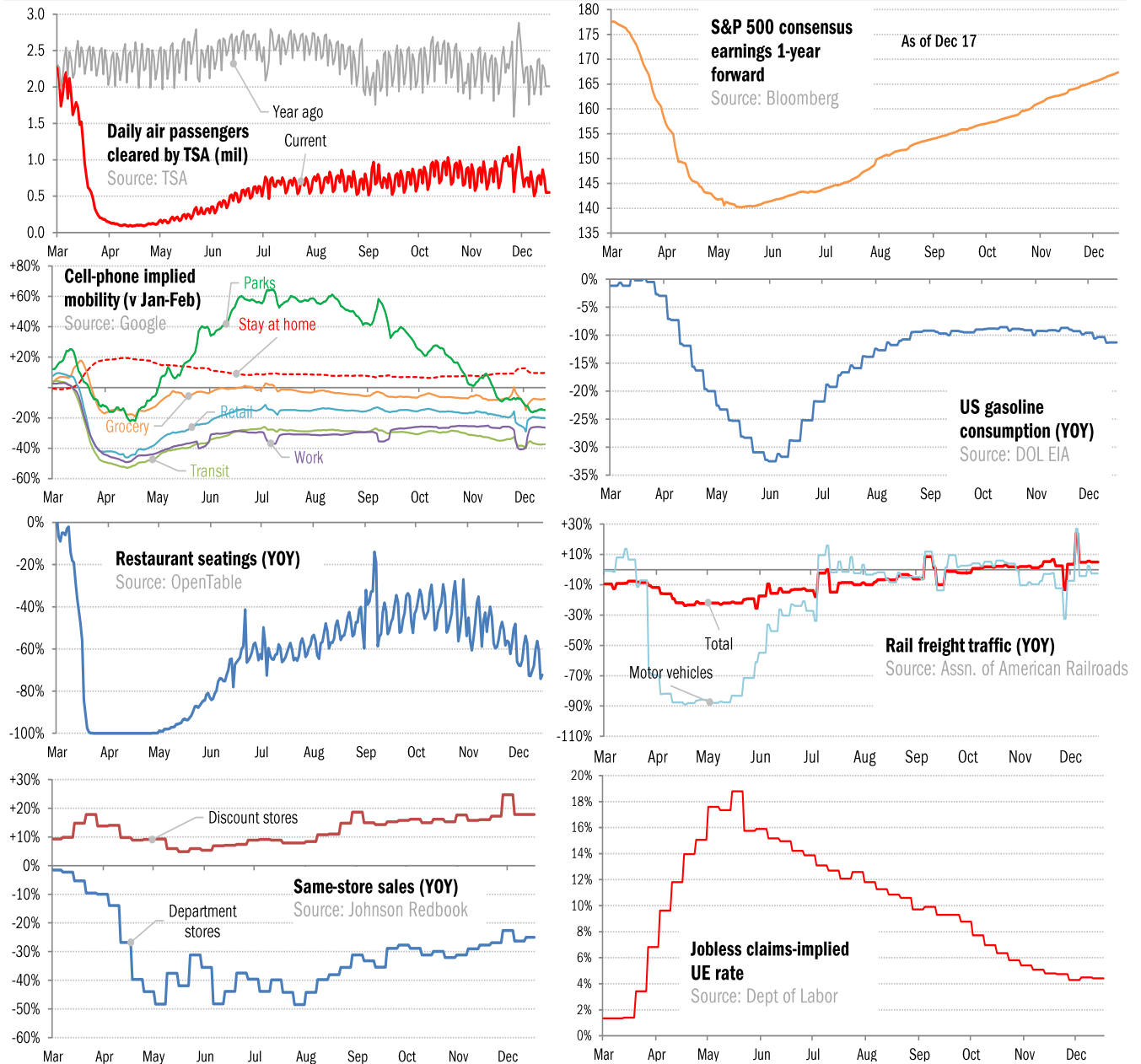


## Data Insights: High-Frequency Post-Virus US Recovery Monitor

Thursday, December 17, 2020

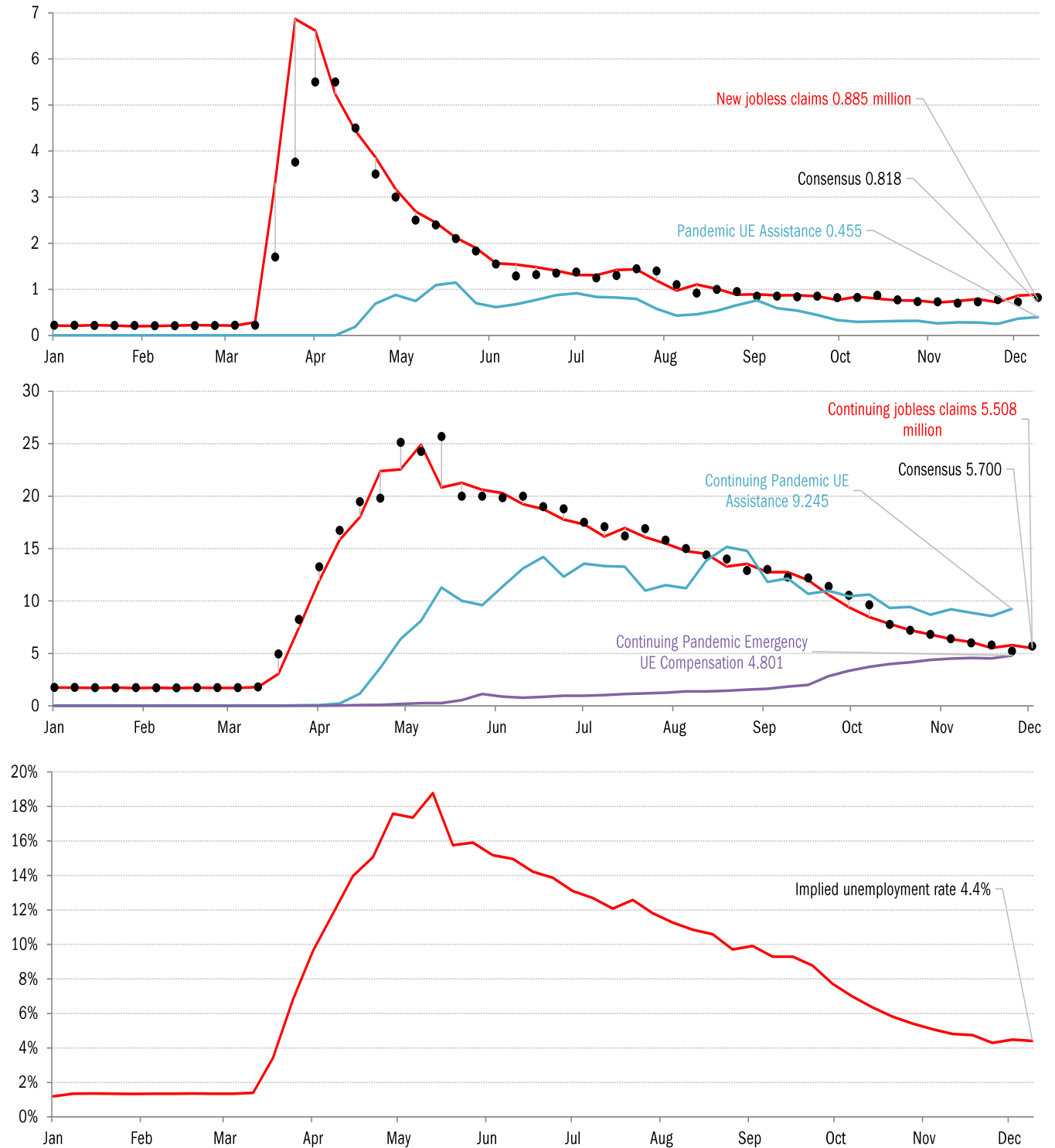
### The US high-frequency macro data dashboard

(state level and other detail in subsequent charts)



Source: As indicated, TrendMacro calculations

## High-frequency view of the US labor market: weekly unemployment claims (millions)

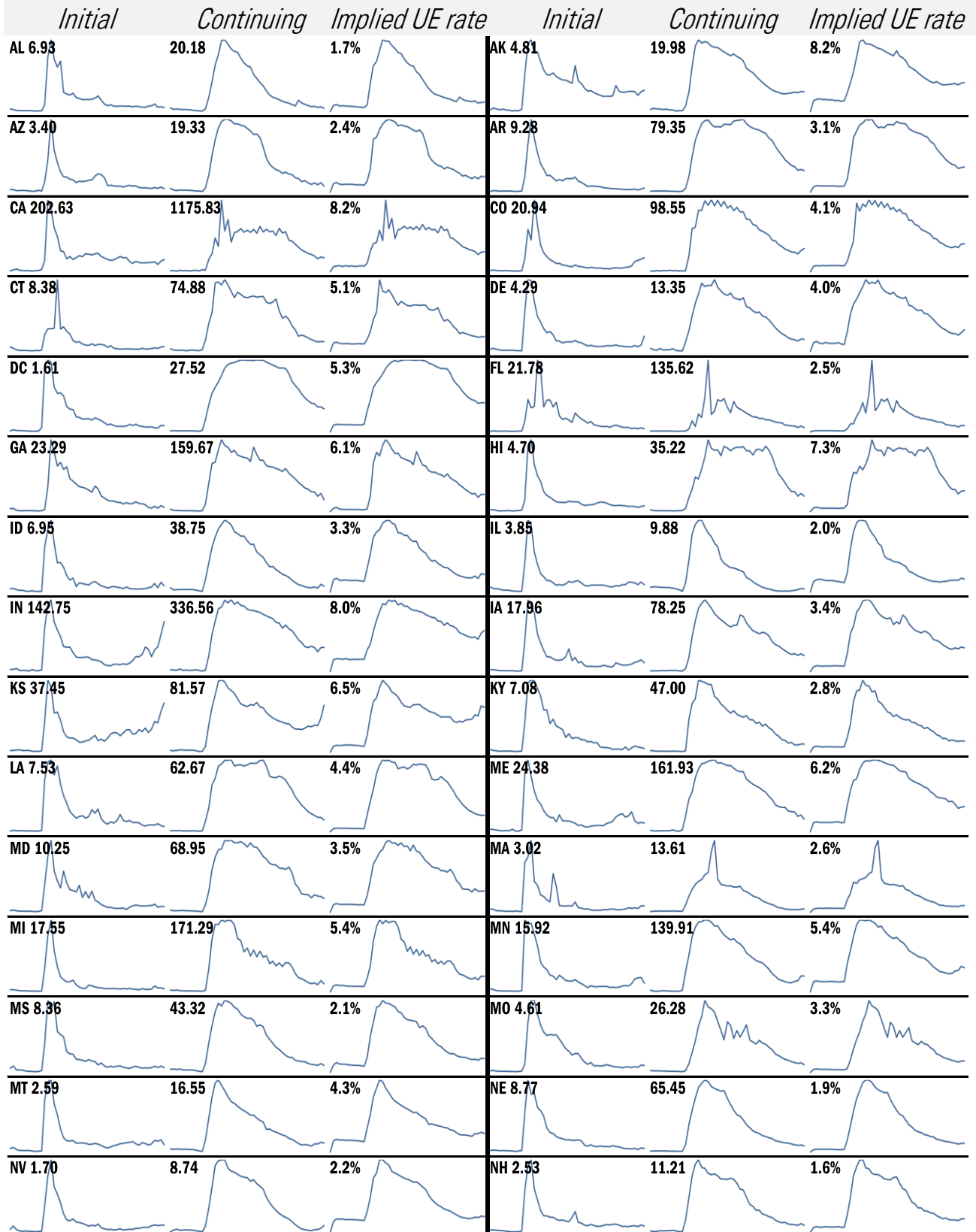


Source: Department of Labor, Bloomberg, TrendMacro calculations

### For more information contact us:

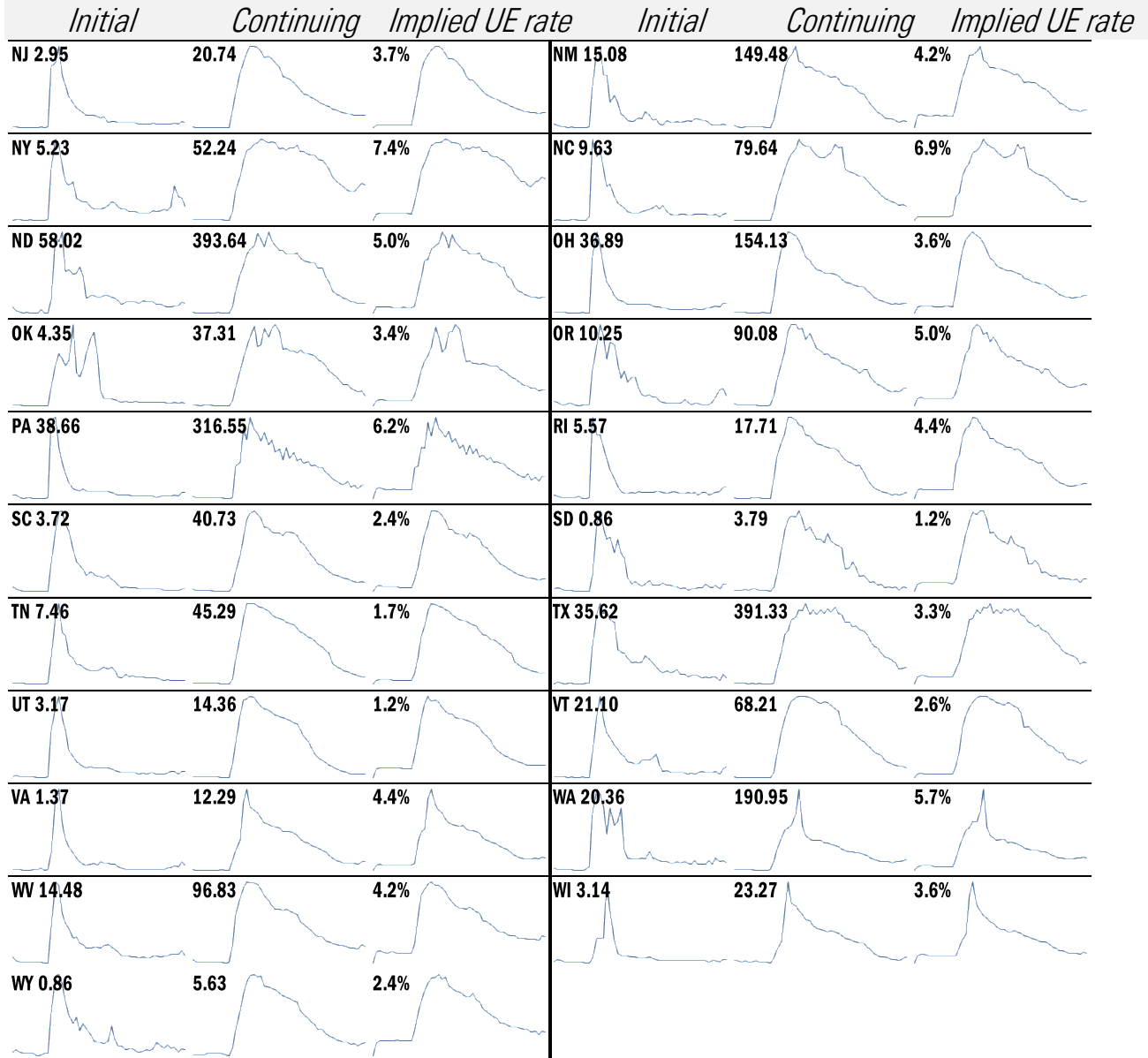
Donald Luskin: 312 273 6766 [don@trendmacro.com](mailto:don@trendmacro.com)  
 Thomas Demas: 704 552 3625 [tdemas@trendmacro.com](mailto:tdemas@trendmacro.com)

# State by state unemployment insurance claims (thousands)



Source: Department of Labor, TrendMacro calculations

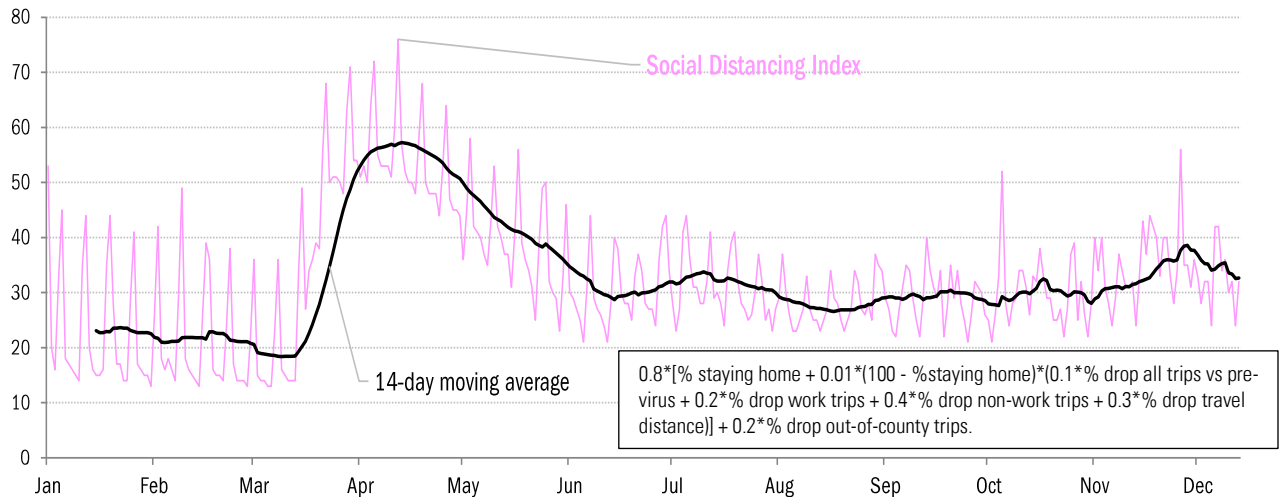
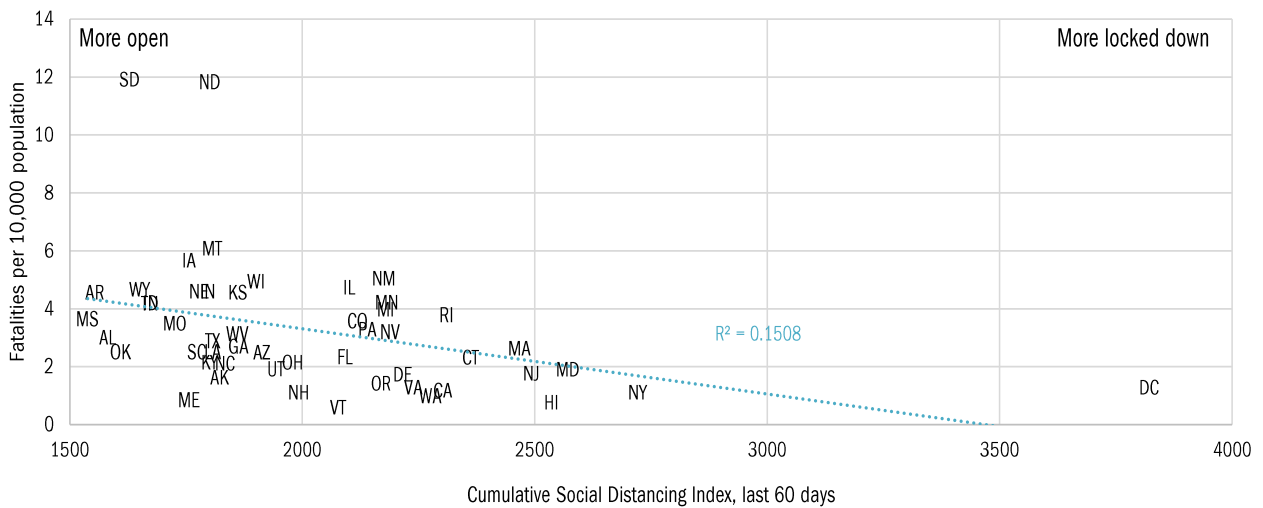
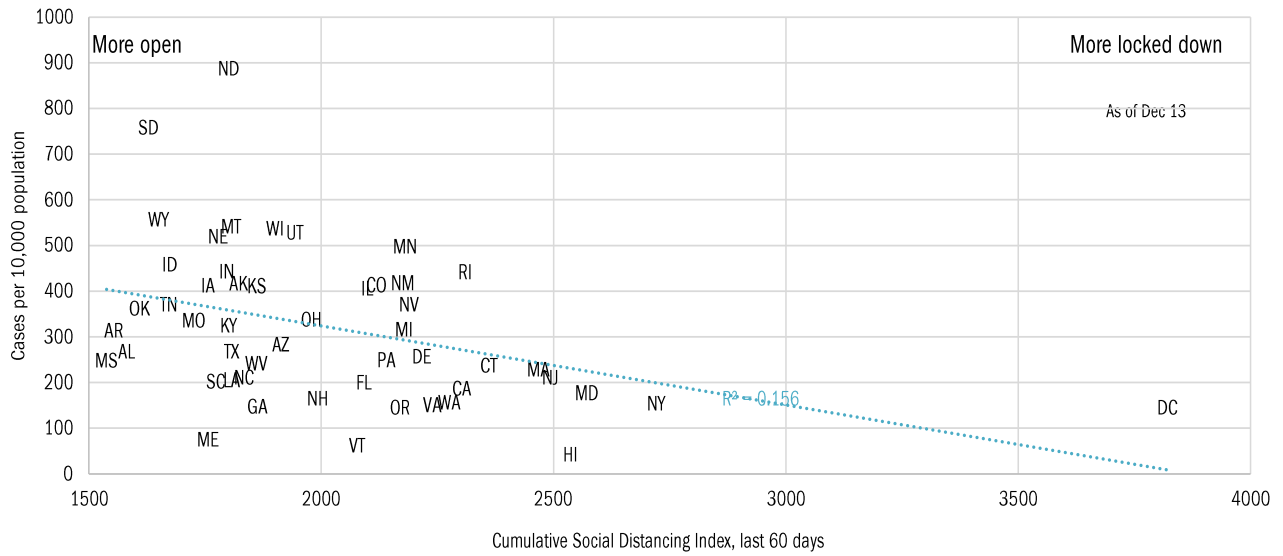
## State by state unemployment insurance claims (thousands)



Source: Department of Labor, TrendMacro calculations

# Assessing the costs of the "winter wave"

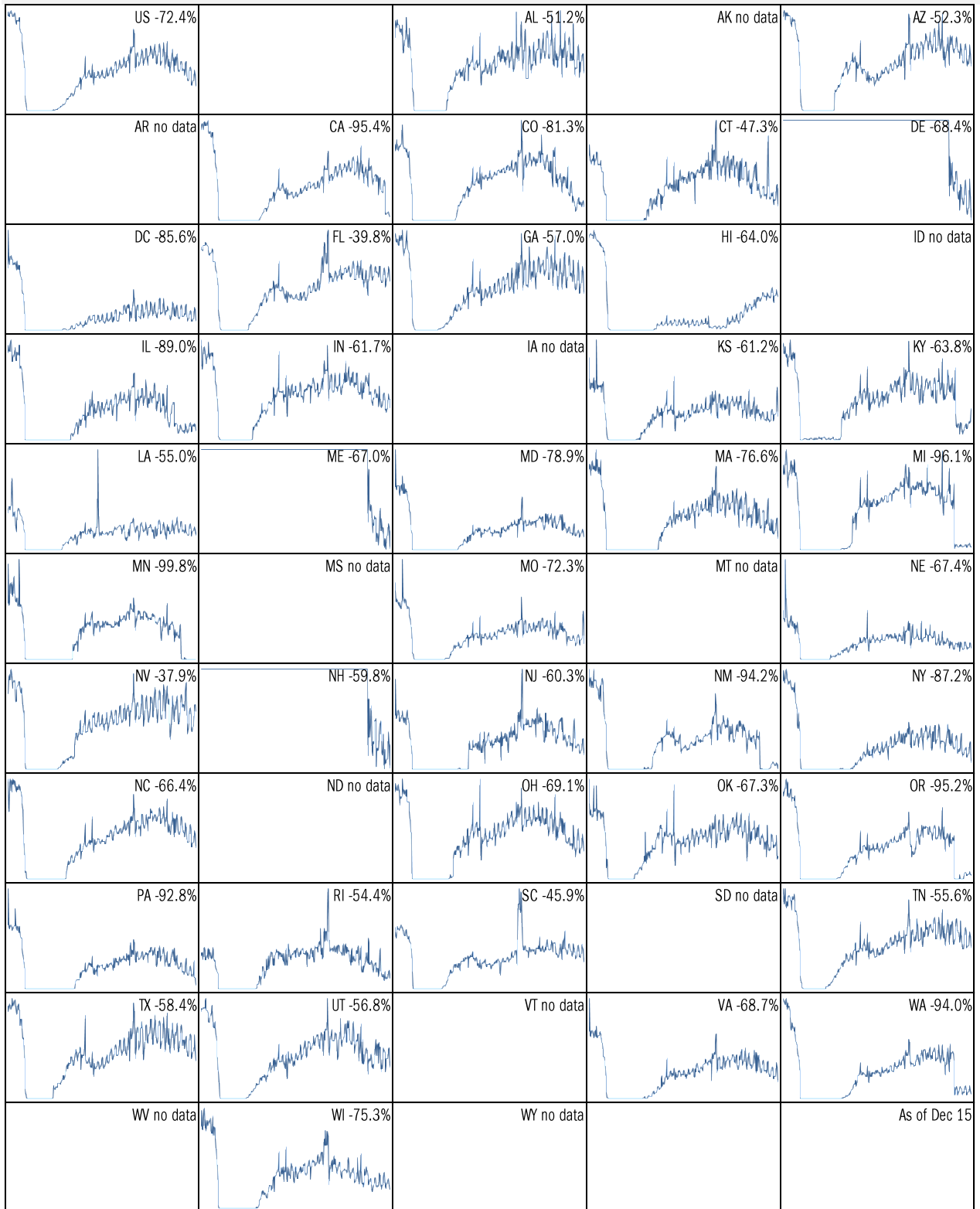
## Covid-2019 fatalities and cases vs social distancing measured by cell-phone data



Source: [University of Maryland COVID-19 Impact Analysis Platform](#), TrendMacro calculations

# Make America eat again:

YOY change in seated diners in restaurants Feb 18 to present ■ Positive



Source: [Open Table](#), TrendMacro calculations

Make America move again: Mobility from Feb 5 vs Jan 3 – Feb 6 baseline ■ Positive

	<i>Retail/rec</i>	<i>Grocery/pharm</i>	<i>Parks</i>	<i>Transit stations</i>	<i>Workplaces</i>	<i>Time at home</i>
<b>US -20</b>		-8	-15	-37	-26	10
<b>AL -12</b>		-3	-4	-12	-18	6
<b>AK -16</b>		-7	-4	-29	-22	10
<b>AZ -19</b>		-11	-31	-28	-29	10
<b>AR -12</b>		-3	16	-6	-19	6
<b>CA -32</b>		-13	-32	-49	-35	14
<b>CO -28</b>		-10	-20	-43	-33	13
<b>CT -17</b>		-8	1	-34	-26	10
<b>DE -13</b>		-4	-6	-41	-25	9
<b>DC -51</b>		-25	-43	-67	-46	17
<b>FL -19</b>		-11	-30	-37	-24	7
<b>GA -14</b>		-6	-5	-31	-23	8
<b>HI -32</b>		-19	-45	-56	-30	10
<b>ID -7</b>		2	15	-16	-19	7
<b>IL -24</b>		-5	-13	-42	-28	11

Source: [Google Mobility Reports](https://www.google.com/covid19/mobility/), TrendMacro calculations

Make America move again: Mobility from Feb 5 vs Jan 3 – Feb 6 baseline ■ Positive

	<i>Retail/rec</i>	<i>Grocery/pharm</i>	<i>Parks</i>	<i>Transit stations</i>	<i>Workplaces</i>	<i>Residential</i>
<b>IN -11</b>		-4	19	-14	-20	8
<b>IA -12</b>		8	22	-20	-18	8
<b>KS -14</b>		-7	22	-12	-21	8
<b>KY -20</b>		-2	17	-11	-24	8
<b>LA -16</b>		-4	-26	-23	-20	6
<b>ME -13</b>		0	4	-19	-20	8
<b>MD -21</b>		-10	11	-43	-31	13
<b>MA -24</b>		-11	-11	-55	-32	13
<b>MI -25</b>		-7	13	-36	-27	11
<b>MN -27</b>		-10	4	-48	-31	14
<b>MS -11</b>		-6	-4	0	-17	5
<b>MO -12</b>		-2	10	-19	-19	7
<b>MT -10</b>		-3	-1	-11	-16	7
<b>NE -14</b>		-3	4	-19	-19	8
<b>NV -23</b>		-10	-37	-42	-30	11

Source: [Google Mobility Reports](https://www.google.com/covid19/mobility/), TrendMacro calculations



Make America move again: Mobility from Feb 5 vs Jan 3 – Feb 6 baseline ■ Positive

	<i>Retail/rec</i>	<i>Grocery/pharm</i>	<i>Parks</i>	<i>Transit stations</i>	<i>Workplaces</i>	<i>Residential</i>
<b>NH -13</b>		-2	-5	-27	-23	11
<b>NJ -22</b>		-6	10	-43	-31	12
<b>NM -31</b>		-6	-23	-19	-32	13
<b>NY -28</b>		-9	-14	-46	-30	11
<b>NC -15</b>		-4	6	-34	-23	7
<b>ND -14</b>		-11	-10	-24	-16	8
<b>OH -16</b>		-6	20	-22	-23	9
<b>OK -14</b>		-4	1	-9	-21	7
<b>OR -25</b>		-6	2	-38	-31	11
<b>PA -20</b>		-6	8	-39	-29	11
<b>RI -22</b>		-8	22	-56	-29	11
<b>SC -10</b>		-3	-4	-12	-18	6
<b>SD -7</b>		9	26	-9	-13	6
<b>TN -12</b>		-3	9	-18	-20	7
<b>TX -17</b>		-9	-22	-29	-25	9

Source: [Google Mobility Reports](https://www.google.com/covid19/mobility/), TrendMacro calculations

Make America move again: Mobility from Feb 5 vs Jan 3 – Feb 6 baseline ■ Positive

	<i>Retail/rec</i>	<i>Grocery/pharm</i>	<i>Parks</i>	<i>Transit stations</i>	<i>Workplaces</i>	<i>Residential</i>
<b>UT -14</b>		-5	1	-36	-25	9
<b>VT -22</b>		-11	-2	-48	-24	11
<b>VA -18</b>		-6	10	-36	-28	10
<b>WA -26</b>		-9	-2	-50	-33	12
<b>WV -14</b>		-3	6	-14	-20	7
<b>WI -19</b>		-5	16	-29	-20	10
<b>WY -17</b>		-6	-8	-3	-16	7

Source: [Google Mobility Reports](https://www.google.com/covid19/mobility/), TrendMacro calculations