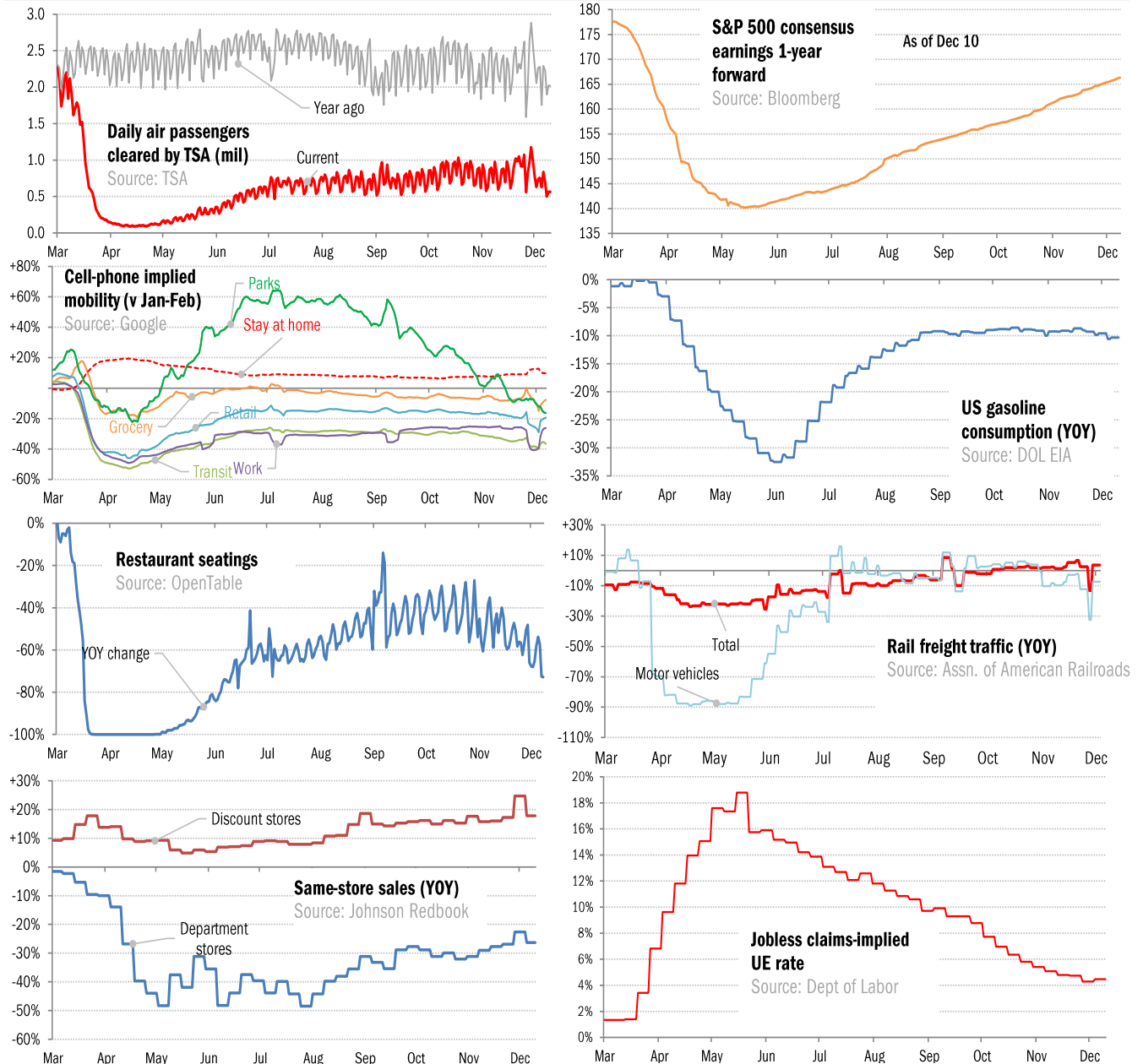


## Data Insights: High-Frequency Post-Virus US Recovery Monitor

Thursday, December 10, 2020

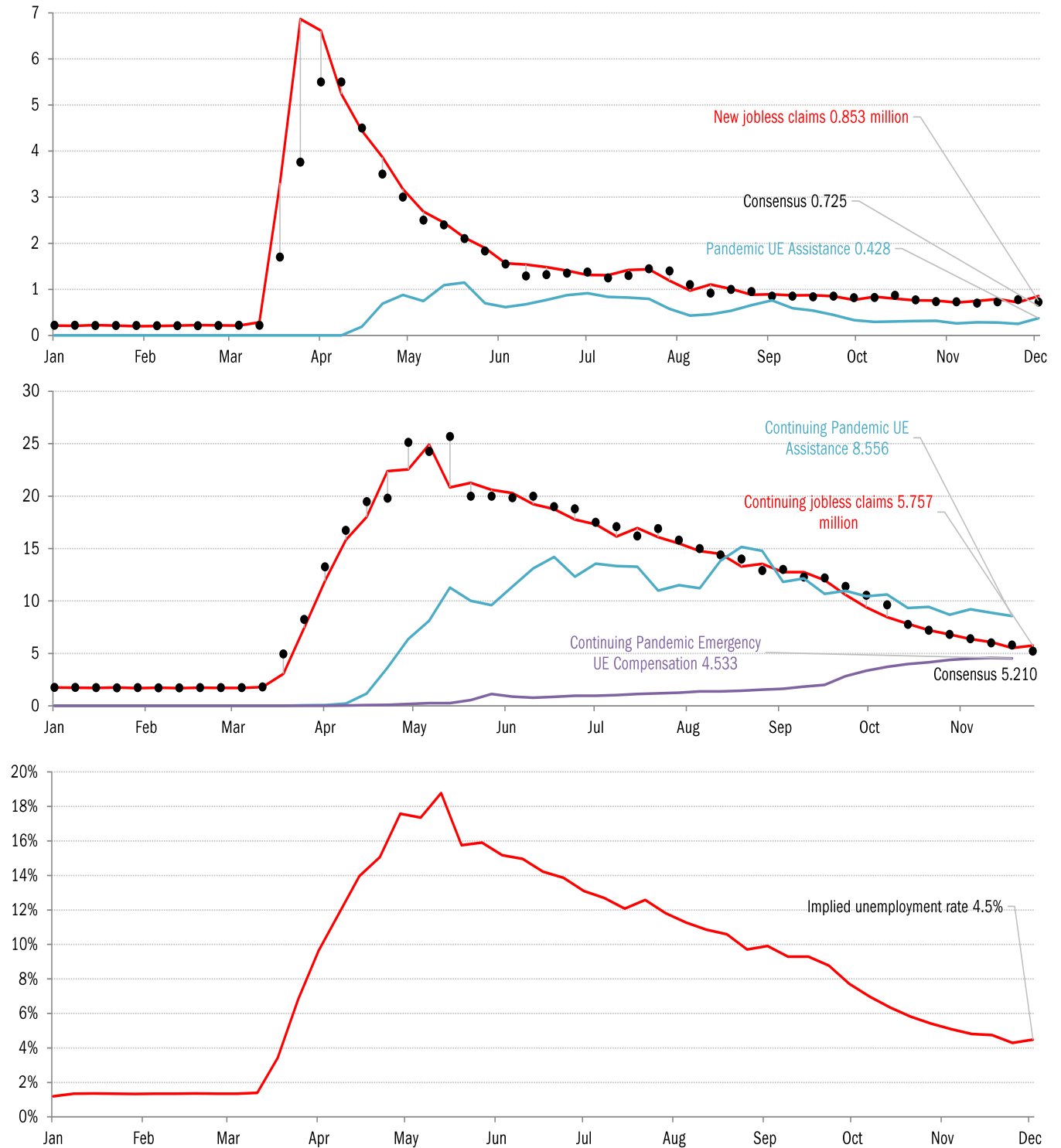
### The US high-frequency macro data dashboard

(state level and other detail in subsequent charts)



Source: As indicated, TrendMacro calculations

## High-frequency view of the US labor market: weekly unemployment claims (millions)

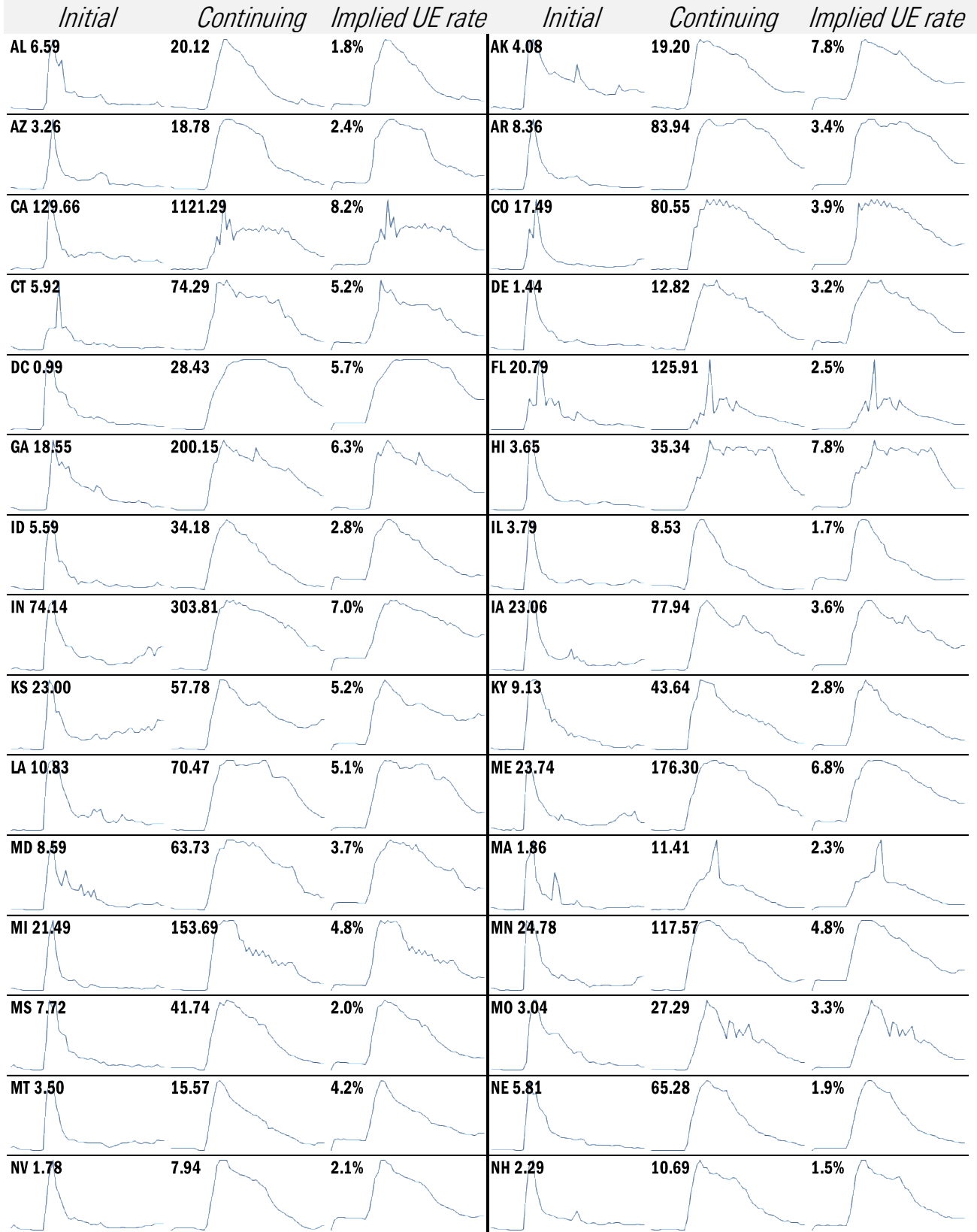


Source: Department of Labor, Bloomberg, TrendMacro calculations

### For more information contact us:

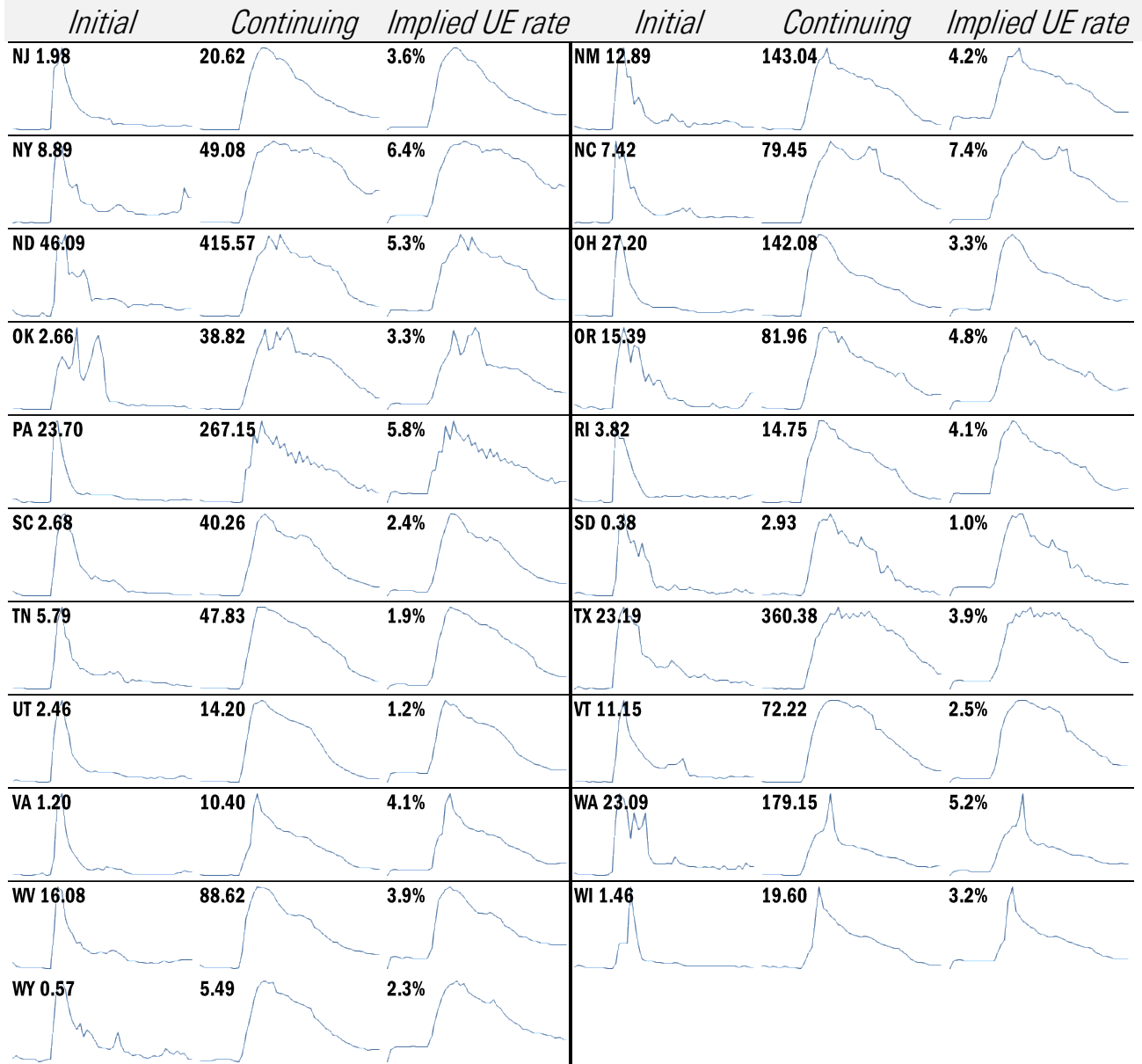
Donald Luskin: 312 273 6766 [don@trendmacro.com](mailto:don@trendmacro.com)  
 Thomas Demas: 704 552 3625 [tdemas@trendmacro.com](mailto:tdemas@trendmacro.com)

# State by state unemployment insurance claims (thousands)



Source: Department of Labor, TrendMacro calculations

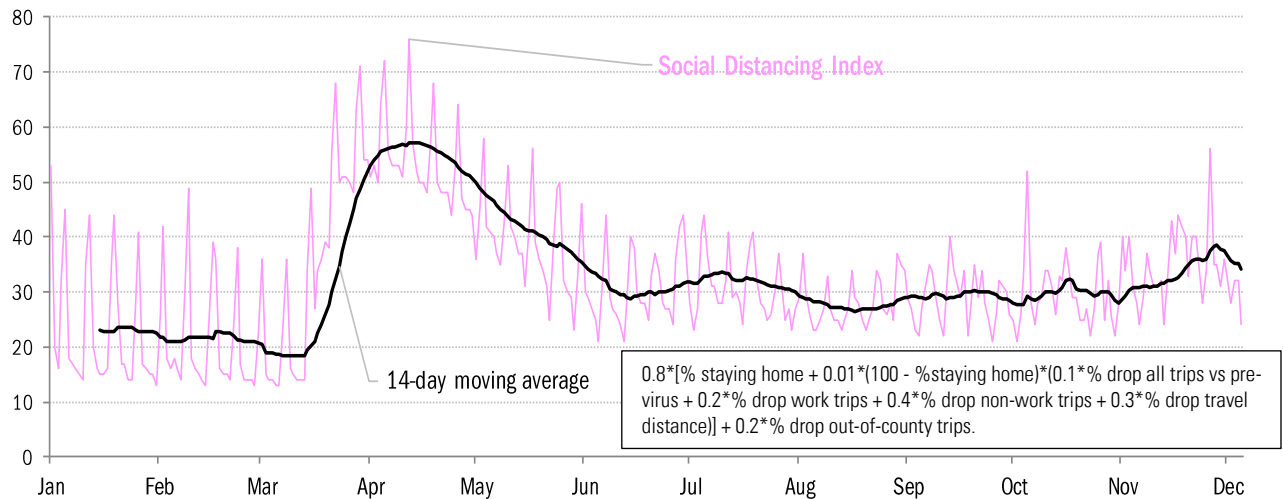
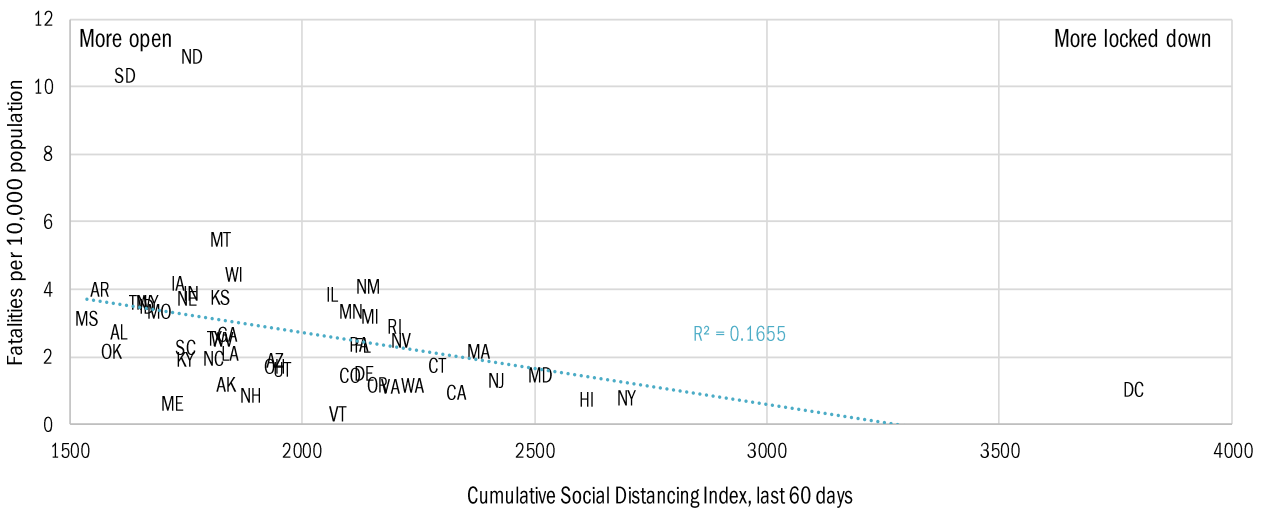
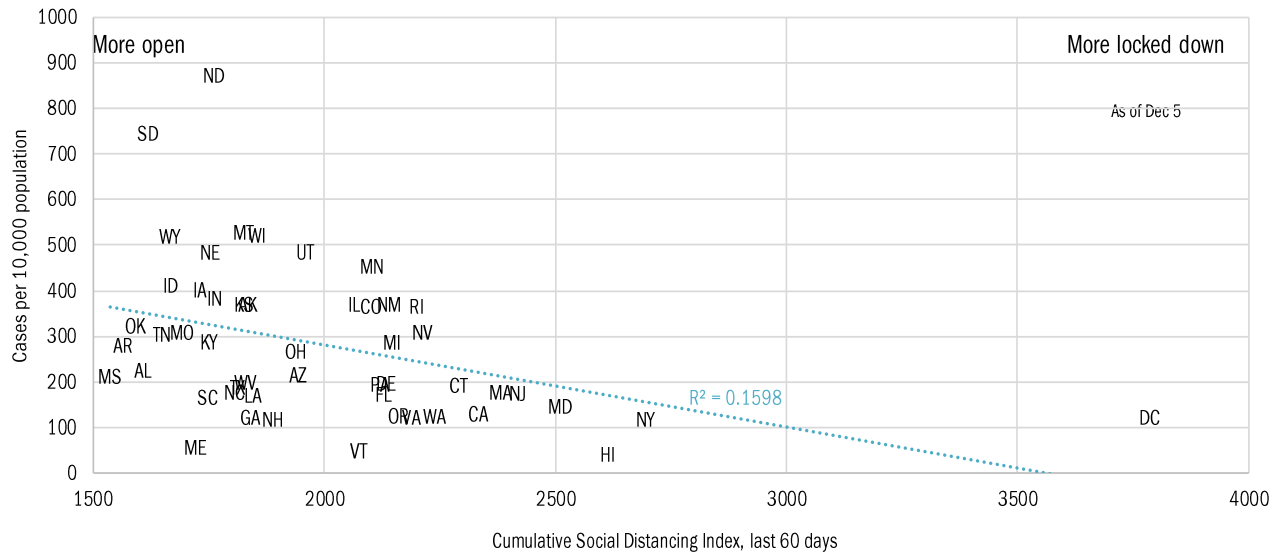
## State by state unemployment insurance claims (thousands)



Source: Department of Labor, TrendMacro calculations

# Assessing the costs of a "second wave" after opening up the US economy

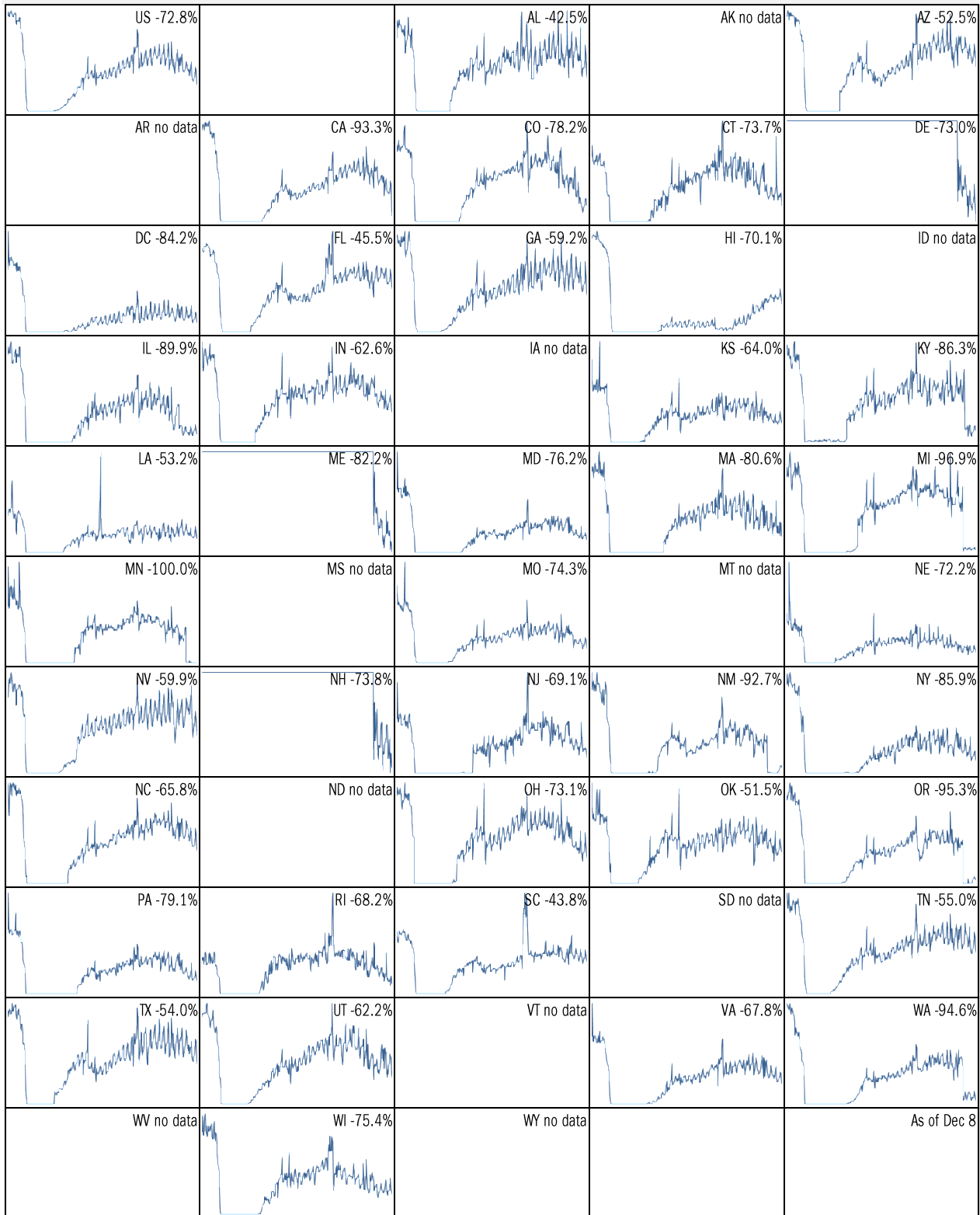
## Covid-2019 fatalities and cases vs social distancing measured by cell-phone data



Source: [University of Maryland COVID-19 Impact Analysis Platform](#), TrendMacro calculations

# Make America eat again:

YOY change in seated diners in restaurants Feb 18 to present ■ Positive



Source: [Open Table](#), TrendMacro calculations

Make America move again: Mobility from Feb 5 vs Jan 3 – Feb 6 baseline ■ Positive

	<i>Retail/rec</i>	<i>Grocery/pharm</i>	<i>Parks</i>	<i>Transit stations</i>	<i>Workplaces</i>	<i>Time at home</i>
<b>US -19</b>		-8	-16	-37	-26	10
<b>AL -11</b>		-2	-8	-11	-18	6
<b>AK -17</b>		-7	-10	-31	-23	10
<b>AZ -18</b>		-11	-27	-25	-28	9
<b>AR -10</b>		-2	15	-4	-18	6
<b>CA -28</b>		-11	-25	-46	-33	13
<b>CO -26</b>		-8	-12	-41	-32	13
<b>CT -20</b>		-10	-10	-35	-28	12
<b>DE -14</b>		-6	-13	-42	-25	10
<b>DC -52</b>		-25	-54	-69	-48	18
<b>FL -19</b>		-11	-31	-35	-24	7
<b>GA -13</b>		-6	-11	-30	-23	8
<b>HI -31</b>		-20	-43	-54	-30	10
<b>ID -6</b>		1	21	-14	-19	7
<b>IL -24</b>		-6	-12	-42	-29	12

Source: [Google Mobility Reports](https://www.google.com/covid19/mobility/), TrendMacro calculations

Make America move again: Mobility from Feb 5 vs Jan 3 – Feb 6 baseline ■ Positive

	<i>Retail/rec</i>	<i>Grocery/pharm</i>	<i>Parks</i>	<i>Transit stations</i>	<i>Workplaces</i>	<i>Residential</i>
<b>IN -12</b>		-5	13	-14	-21	8
<b>IA -10</b>		8	27	-19	-18	8
<b>KS -13</b>		-6	18	-12	-21	8
<b>KY -21</b>		-2	0	-11	-24	9
<b>LA -15</b>		-3	-29	-21	-20	6
<b>ME -17</b>		-3	4	-23	-21	8
<b>MD -22</b>		-12	-8	-43	-32	14
<b>MA -27</b>		-13	-17	-55	-33	14
<b>MI -26</b>		-8	10	-35	-28	12
<b>MN -26</b>		-10	3	-46	-31	14
<b>MS -9</b>		-4	-8	3	-17	5
<b>MO -11</b>		-2	9	-18	-19	7
<b>MT -9</b>		-1	2	-11	-16	6
<b>NE -12</b>		-2	6	-17	-19	8
<b>NV -22</b>		-9	-36	-40	-30	11

Source: [Google Mobility Reports](https://www.google.com/covid19/mobility/), TrendMacro calculations



Make America move again: Mobility from Feb 5 vs Jan 3 – Feb 6 baseline ■ Positive

	<i>Retail/rec</i>	<i>Grocery/pharm</i>	<i>Parks</i>	<i>Transit stations</i>	<i>Workplaces</i>	<i>Residential</i>
NH -17		-5	-1	-31	-24	11
NJ -24		-9	-8	-45	-32	13
NM -31		-7	-23	-19	-33	13
NY -30		-11	-26	-47	-31	12
NC -14		-3	1	-32	-23	8
ND -14		-10	-2	-23	-16	8
OH -19		-8	8	-23	-25	10
OK -11		-2	-7	-8	-20	7
OR -24		-6	9	-37	-31	11
PA -21		-9	-5	-39	-29	11
RI -25		-9	8	-57	-29	12
SC -9		-3	-9	-10	-18	6
SD -7		8	32	-8	-13	6
TN -12		-3	3	-16	-20	7
TX -16		-9	-26	-28	-25	9

Source: [Google Mobility Reports](https://www.google.com/covid19/mobility/), TrendMacro calculations

Make America move again: Mobility from Feb 5 vs Jan 3 – Feb 6 baseline ■ Positive

	<i>Retail/rec</i>	<i>Grocery/pharm</i>	<i>Parks</i>	<i>Transit stations</i>	<i>Workplaces</i>	<i>Residential</i>
<b>UT -15</b>		-5	8	-34	-25	9
<b>VT -22</b>		-10	-9	-47	-25	11
<b>VA -18</b>		-6	0	-35	-28	11
<b>WA -24</b>		-9	12	-48	-33	12
<b>WV -15</b>		-4	-2	-13	-21	8
<b>WI -18</b>		-4	17	-28	-20	10
<b>WY -15</b>		-4	-2	-1	-16	6

Source: [Google Mobility Reports](#), TrendMacro calculations