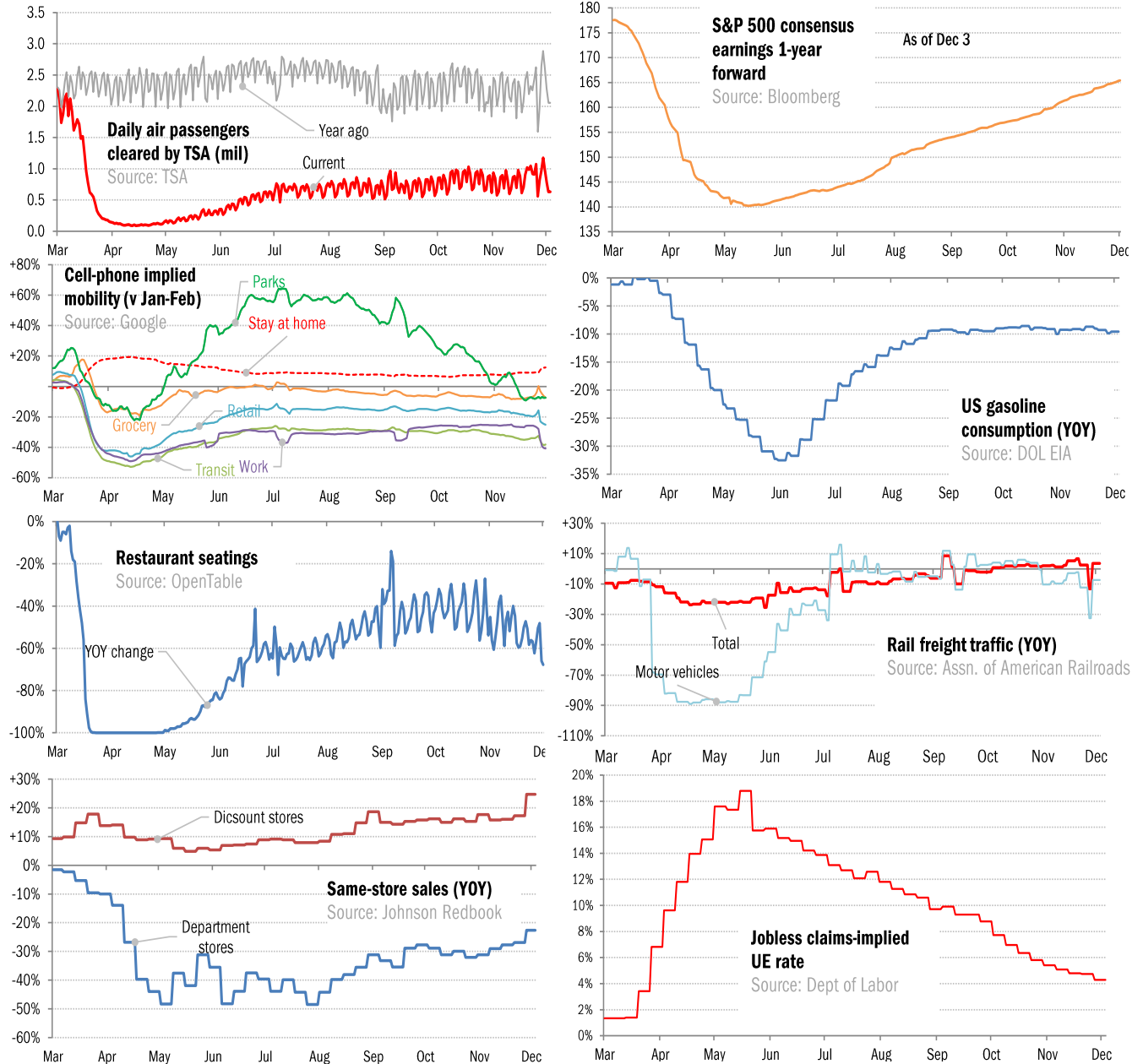


Data Insights: High-Frequency Post-Virus US Recovery Monitor

Thursday, December 3, 2020

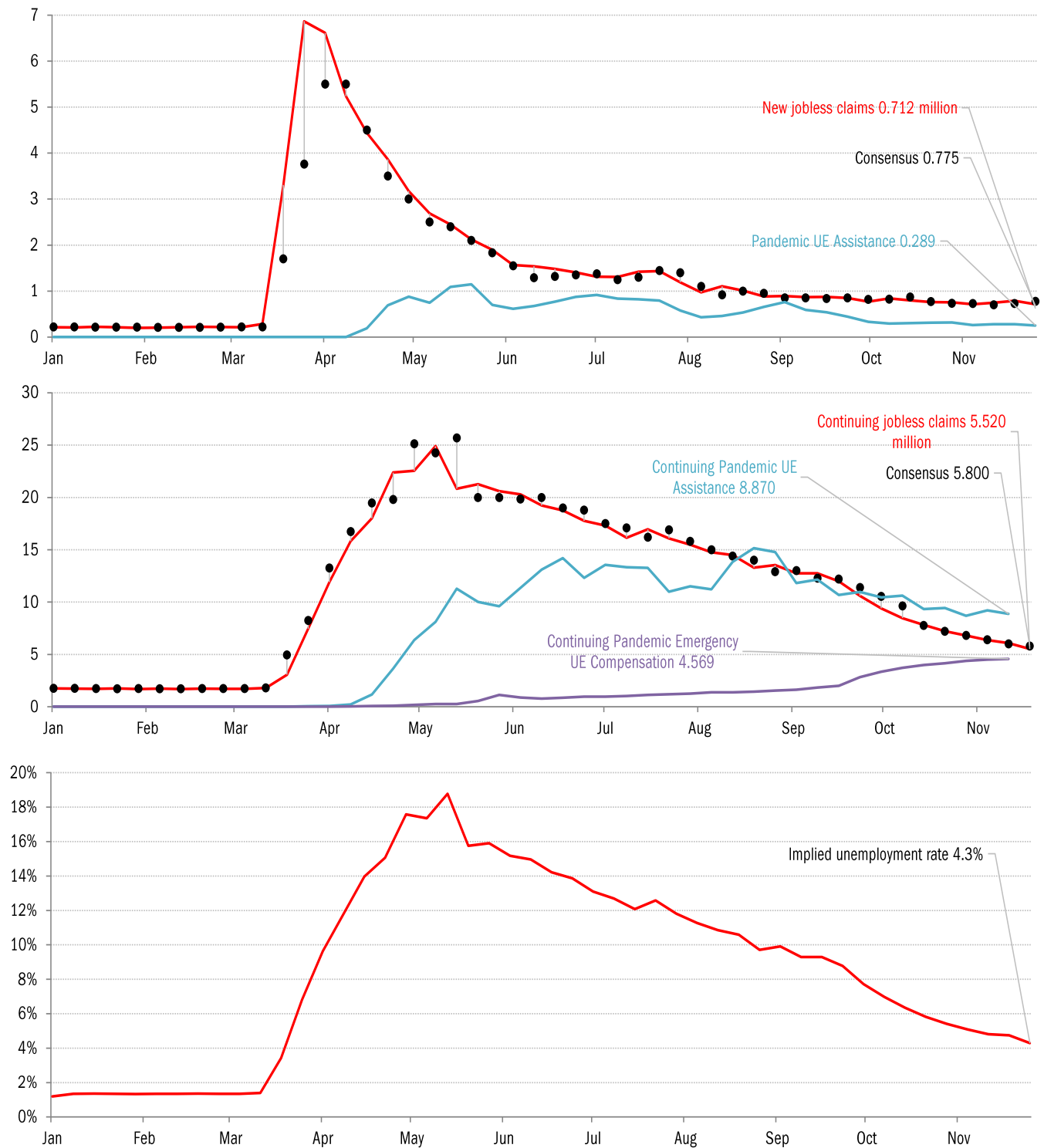
The US high-frequency macro data dashboard

(state level and other detail in subsequent charts)



Source: As indicated, TrendMacro calculations

High-frequency view of the US labor market: weekly unemployment claims (millions)

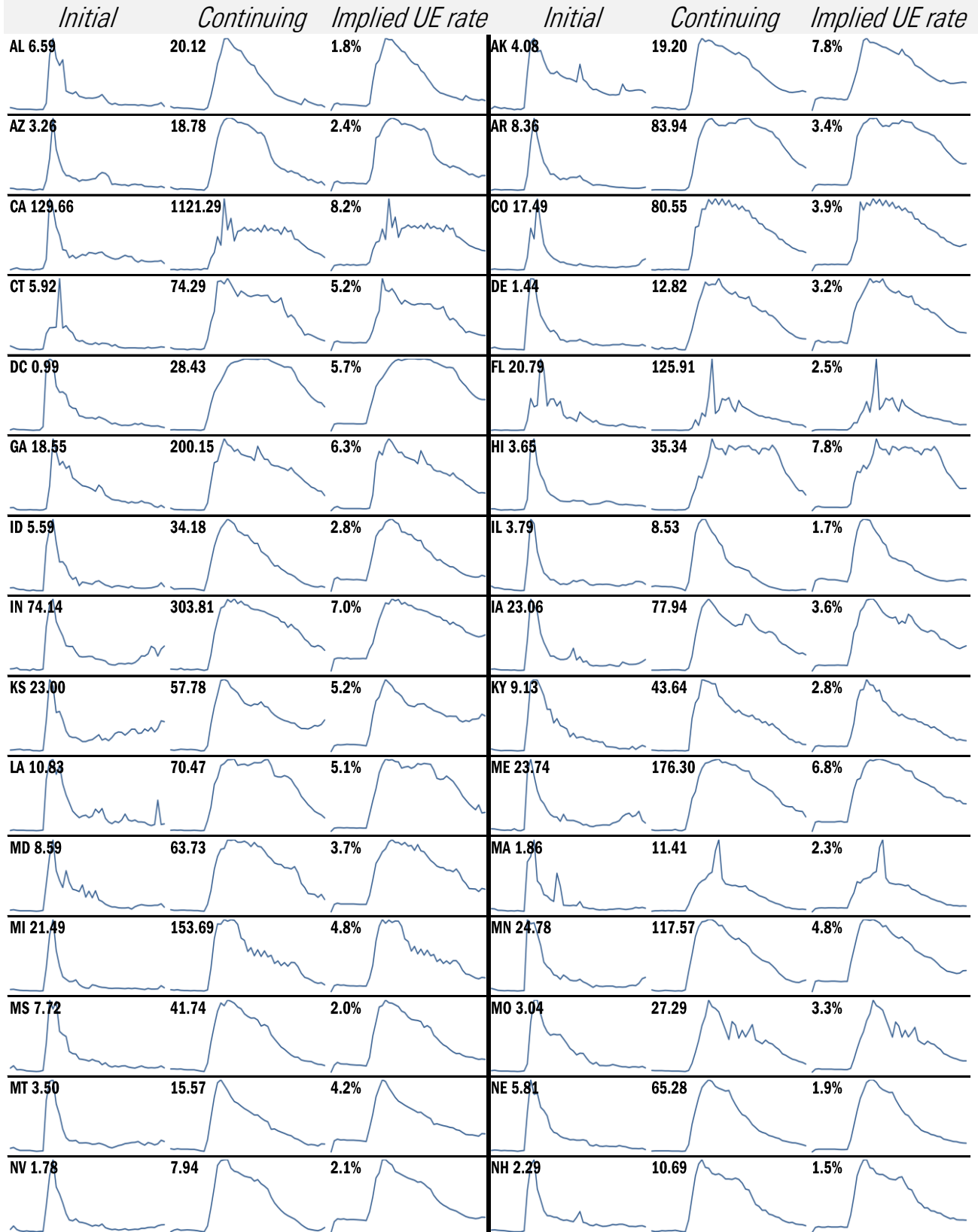


Source: Department of Labor, Bloomberg, TrendMacro calculations

For more information contact us:

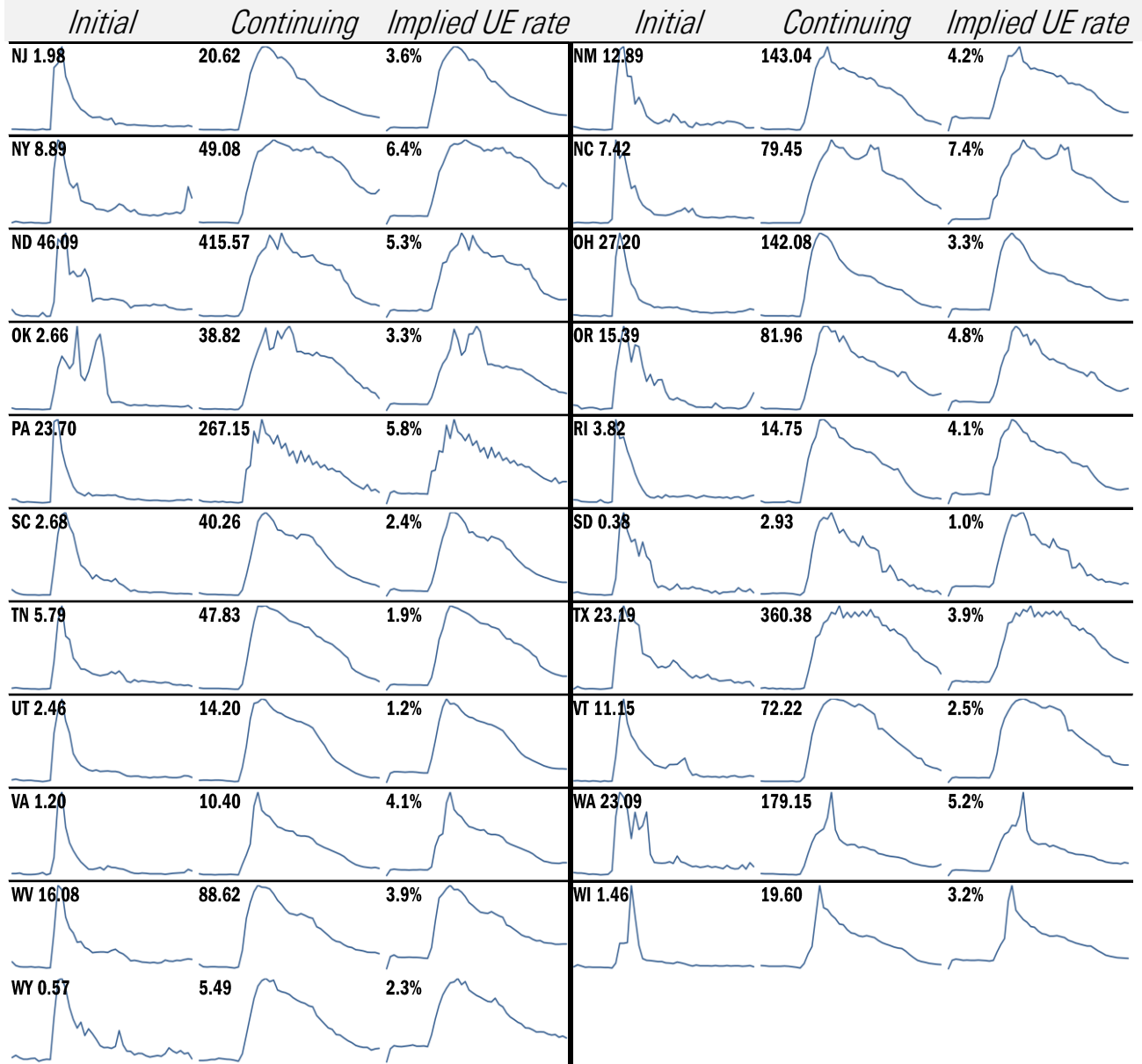
Donald Luskin: 312 273 6766 don@trendmacro.com
 Thomas Demas: 704 552 3625 tdemas@trendmacro.com

State by state unemployment insurance claims (thousands)



Source: Department of Labor, TrendMacro calculations

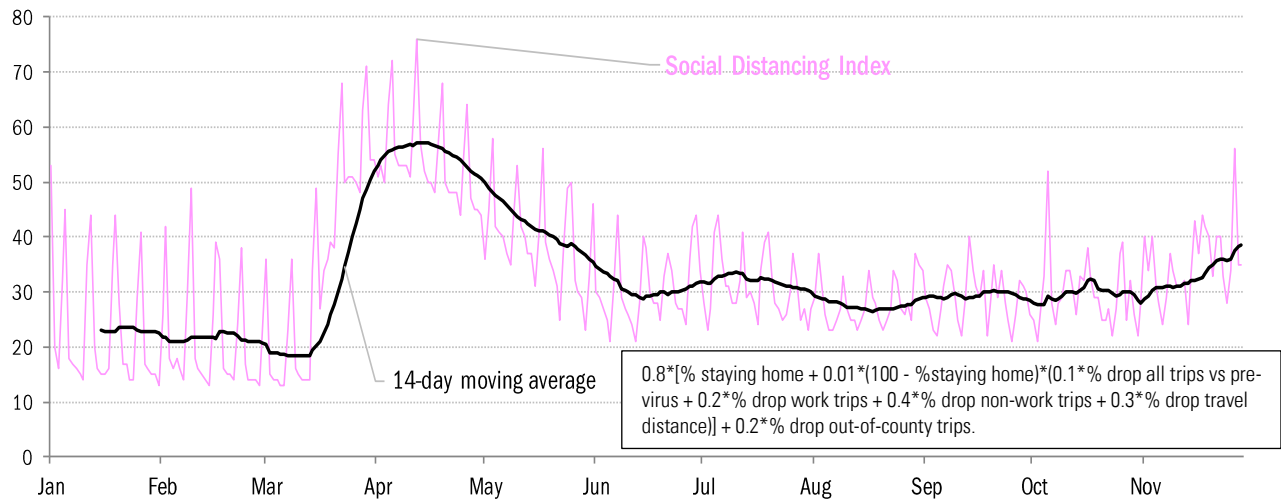
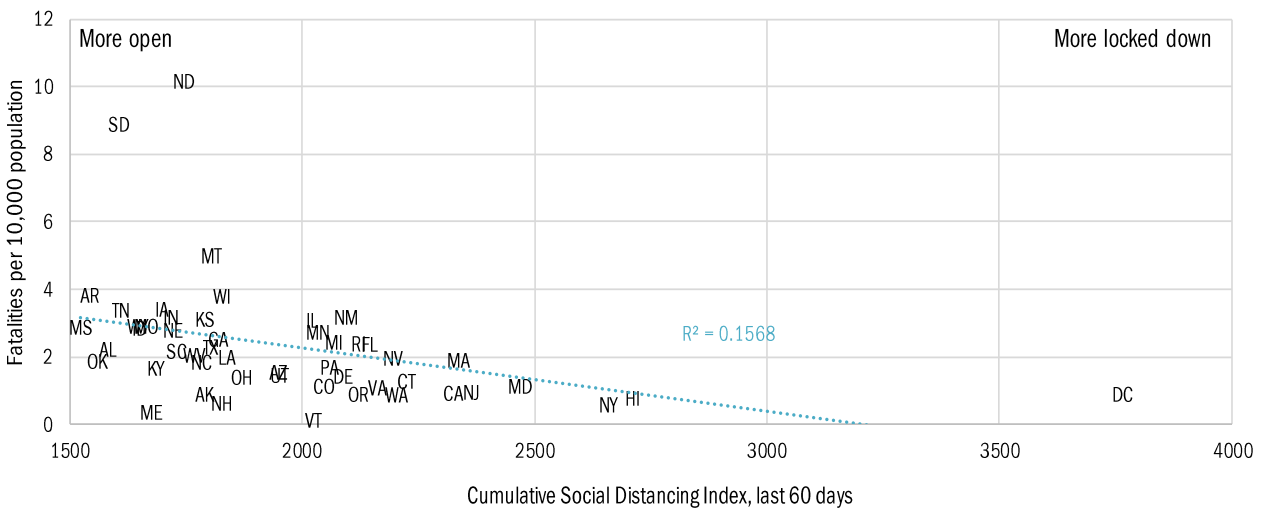
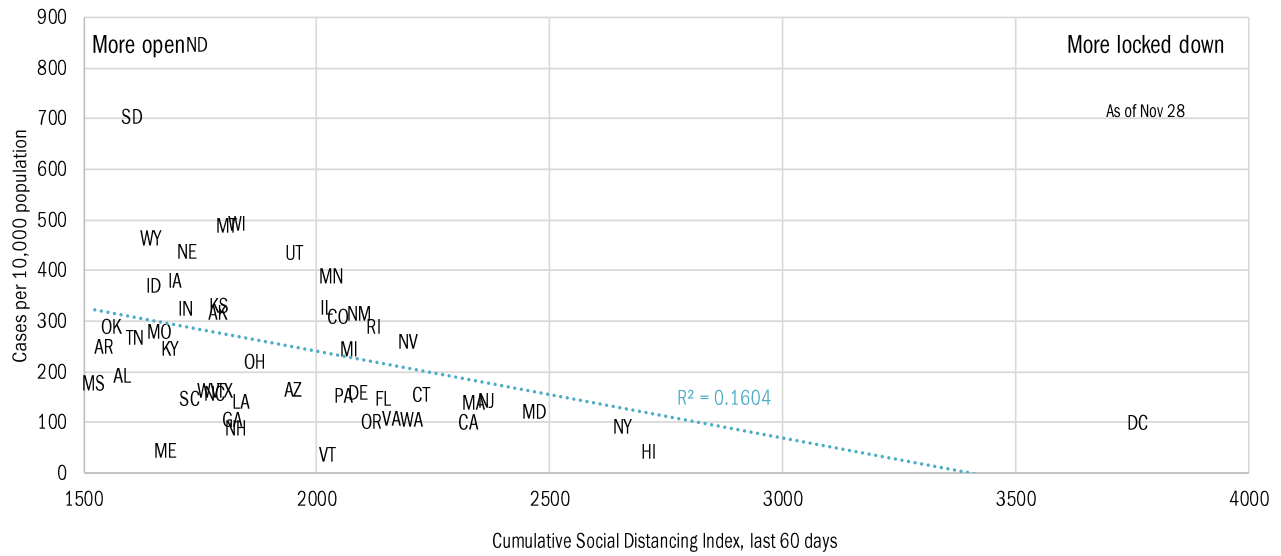
State by state unemployment insurance claims (thousands)



Source: Department of Labor, TrendMacro calculations

Assessing the costs of a "second wave" after opening up the US economy

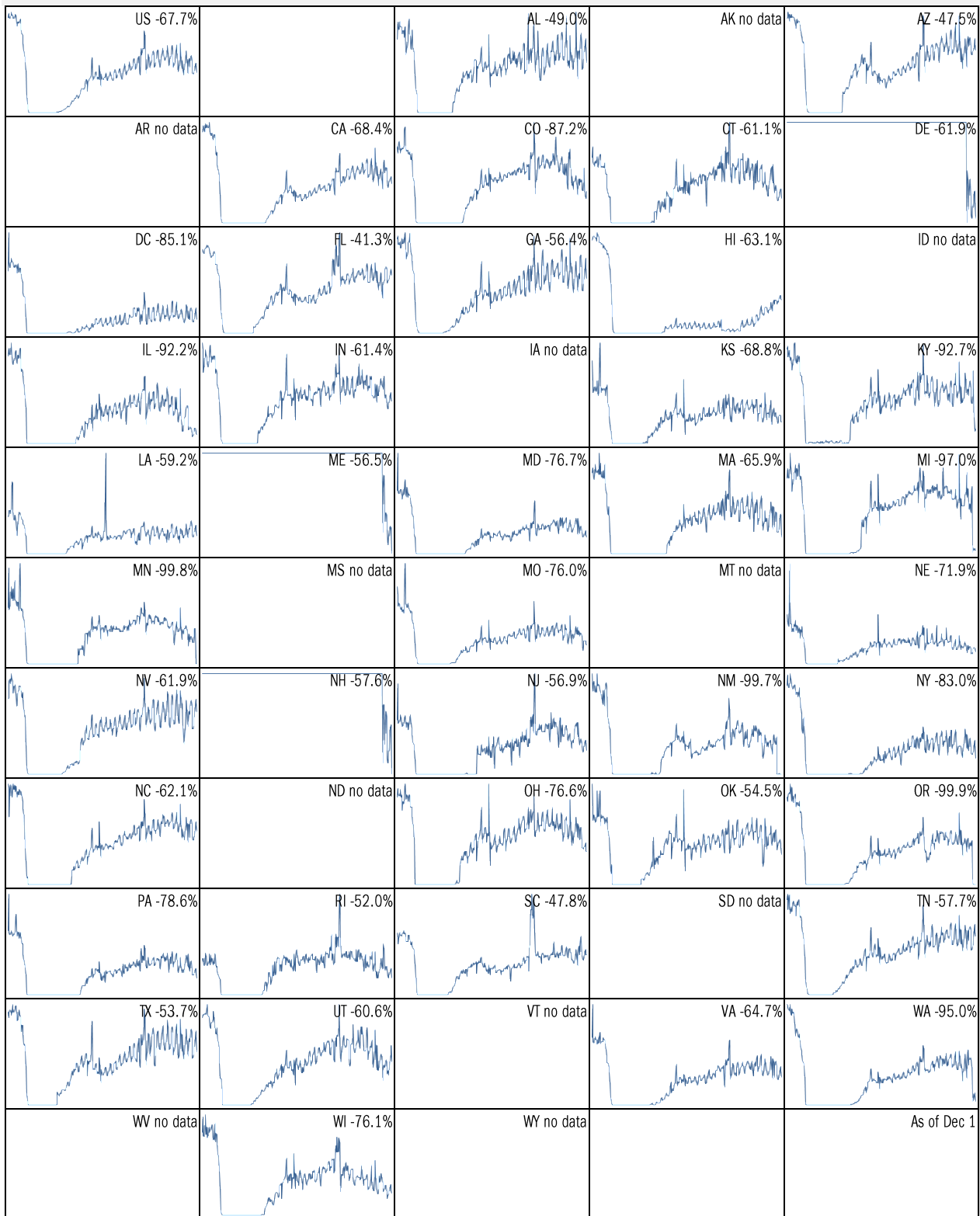
Covid-2019 fatalities and cases vs social distancing measured by cell-phone data



Source: [University of Maryland COVID-19 Impact Analysis Platform](#), TrendMacro calculations

Make America eat again:

YOY change in seated diners in restaurants Feb 18 to present ■ Positive



Source: [Open Table](#), TrendMacro calculations

Make America move again: Mobility from Feb 5 vs Jan 3 – Feb 6 baseline ■ Positive

	<i>Retail/rec</i>	<i>Grocery/pharm</i>	<i>Parks</i>	<i>Transit stations</i>	<i>Workplaces</i>	<i>Time at home</i>
US -25		-8	-7	-38	-41	12
AL -21		-5	-1	-11	-38	10
AK -23		-7	-6	-36	-36	13
AZ -23		-9	-19	-26	-41	11
AR -19		-4	38	-10	-39	9
CA -32		-11	-19	-47	-44	14
CO -32		-10	-11	-42	-46	15
CT -22		-8	8	-33	-39	13
DE -17		-4	4	-43	-37	12
DC -55		-26	-43	-70	-53	17
FL -24		-12	-22	-35	-40	10
GA -20		-4	7	-30	-41	10
HI -36		-20	-46	-58	-41	14
ID -15		2	29	-15	-38	10
IL -29		-5	-11	-46	-43	15

Source: [Google Mobility Reports](#), TrendMacro calculations

Make America move again: Mobility from Feb 5 vs Jan 3 – Feb 6 baseline ■ Positive

	<i>Retail/rec</i>	<i>Grocery/pharm</i>	<i>Parks</i>	<i>Transit stations</i>	<i>Workplaces</i>	<i>Residential</i>
IN -19						
		-4	22	-18	-38	11
IA -19						
		6	15	-26	-36	12
KS -22						
		-7	12	-16	-39	11
KY -27						
		-3	21	-13	-39	11
LA -26						
		-7	-30	-24	-39	10
ME -25						
		-6	15	-22	-35	11
MD -25						
		-10	22	-44	-42	15
MA -29						
		-15	-5	-56	-43	15
MI -32						
		-7	19	-38	-42	14
MN -32						
		-12	-3	-49	-44	17
MS -19						
		-8	-2	-1	-39	9
MO -20						
		-4	12	-23	-38	11
MT -20						
		-3	11	-13	-35	10
NE -21						
		-4	0	-24	-38	13
NV -24						
		-8	-30	-37	-41	12

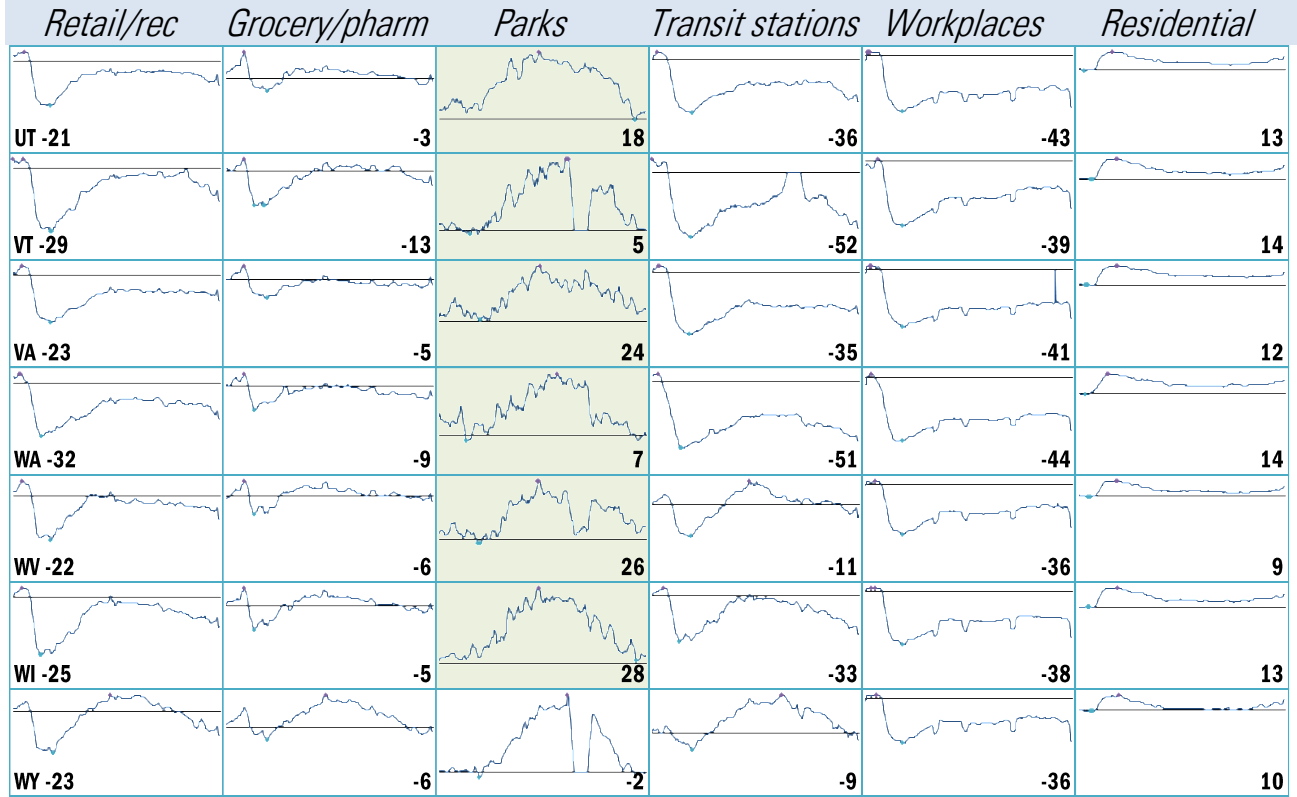
Source: [Google Mobility Reports](https://www.google.com/covid19/mobility/), TrendMacro calculations

Make America move again: Mobility from Feb 5 vs Jan 3 – Feb 6 baseline ■ Positive

	<i>Retail/rec</i>	<i>Grocery/pharm</i>	<i>Parks</i>	<i>Transit stations</i>	<i>Workplaces</i>	<i>Residential</i>
NH -20		-4	9	-34	-37	14
NJ -25		-6	21	-44	-42	14
NM -44		-12	-24	-23	-48	16
NY -32		-9	-8	-48	-41	13
NC -20		-2	21	-30	-39	10
ND -25		-12	-13	-30	-34	12
OH -24		-7	25	-26	-38	12
OK -20		-4	-2	-10	-38	10
OR -32		-7	12	-39	-44	13
PA -24		-8	18	-39	-40	12
RI -27		-11	28	-52	-40	14
SC -16		-3	8	-5	-36	9
SD -15		6	31	-13	-33	10
TN -18		-2	30	-18	-38	10
TX -23		-8	-24	-30	-43	13

Source: [Google Mobility Reports](#), TrendMacro calculations

Make America move again: Mobility from Feb 5 vs Jan 3 – Feb 6 baseline ■ Positive



Source: [Google Mobility Reports](https://www.google.com/covid19/mobility/), TrendMacro calculations