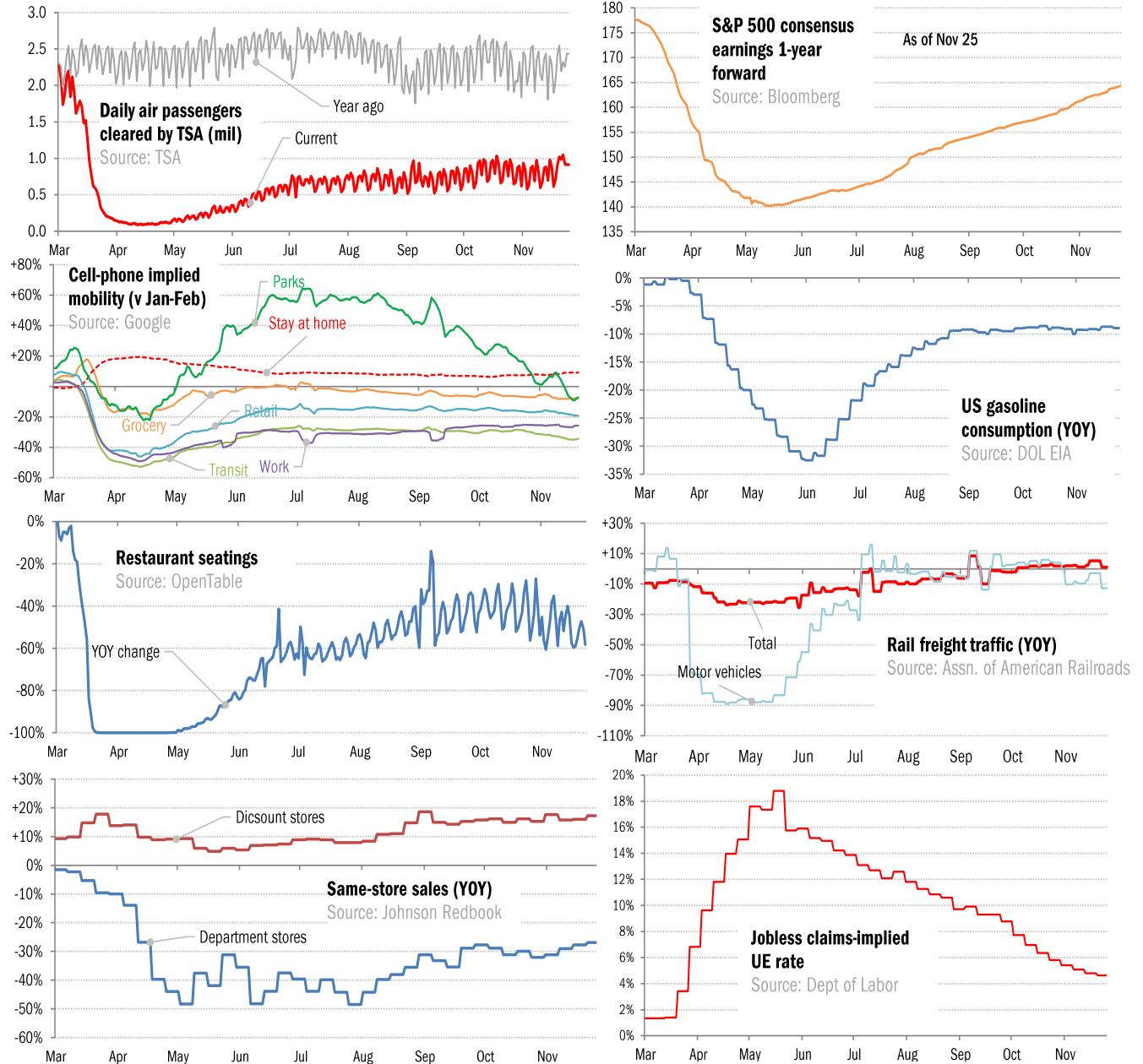


Data Insights: High-Frequency Post-Virus US Recovery Monitor

Wednesday, November 25, 2020

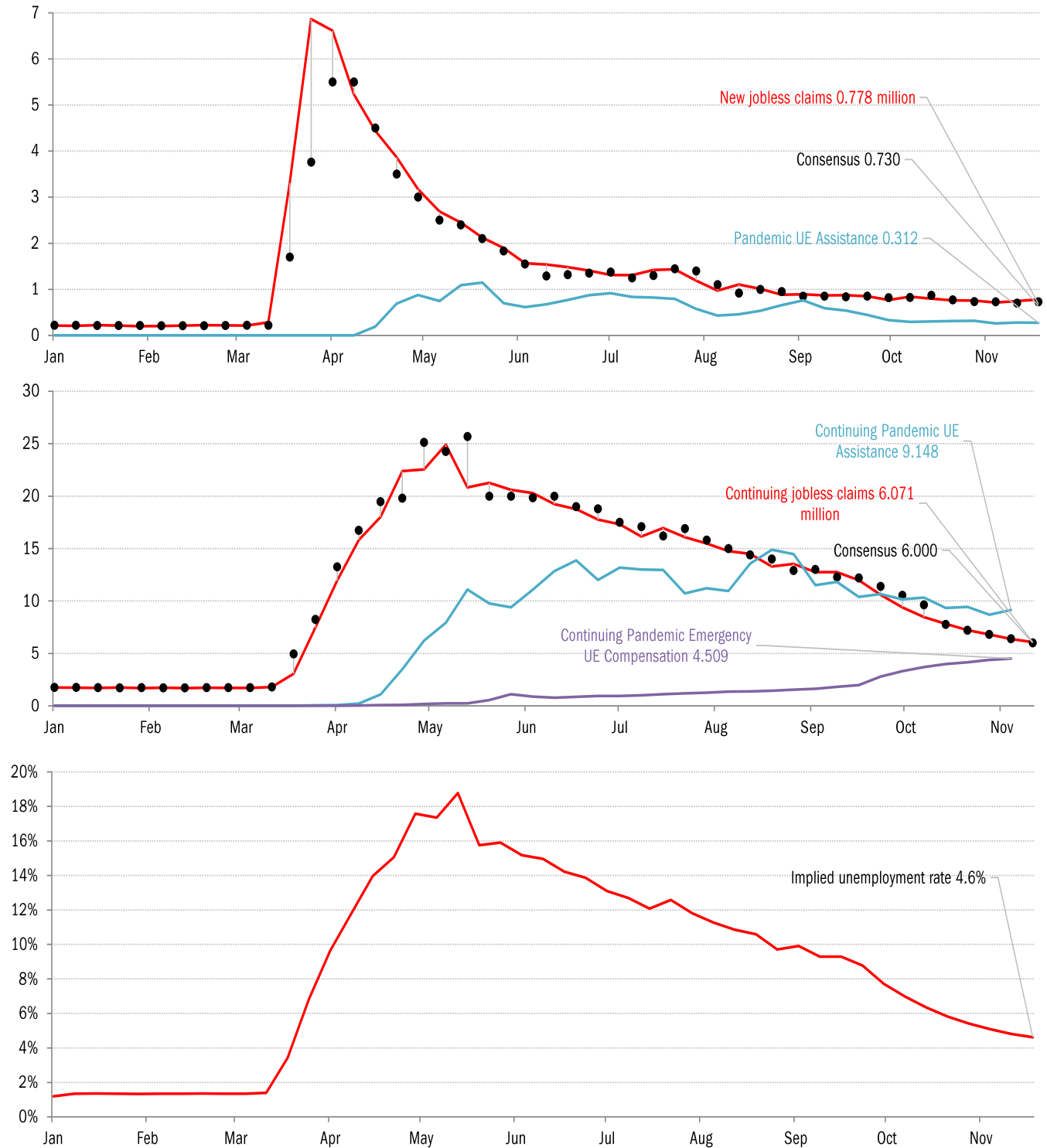
The US high-frequency macro data dashboard

(state level and other detail in subsequent charts)



Source: As indicated, TrendMacro calculations

High-frequency view of the US labor market: weekly unemployment claims (millions)

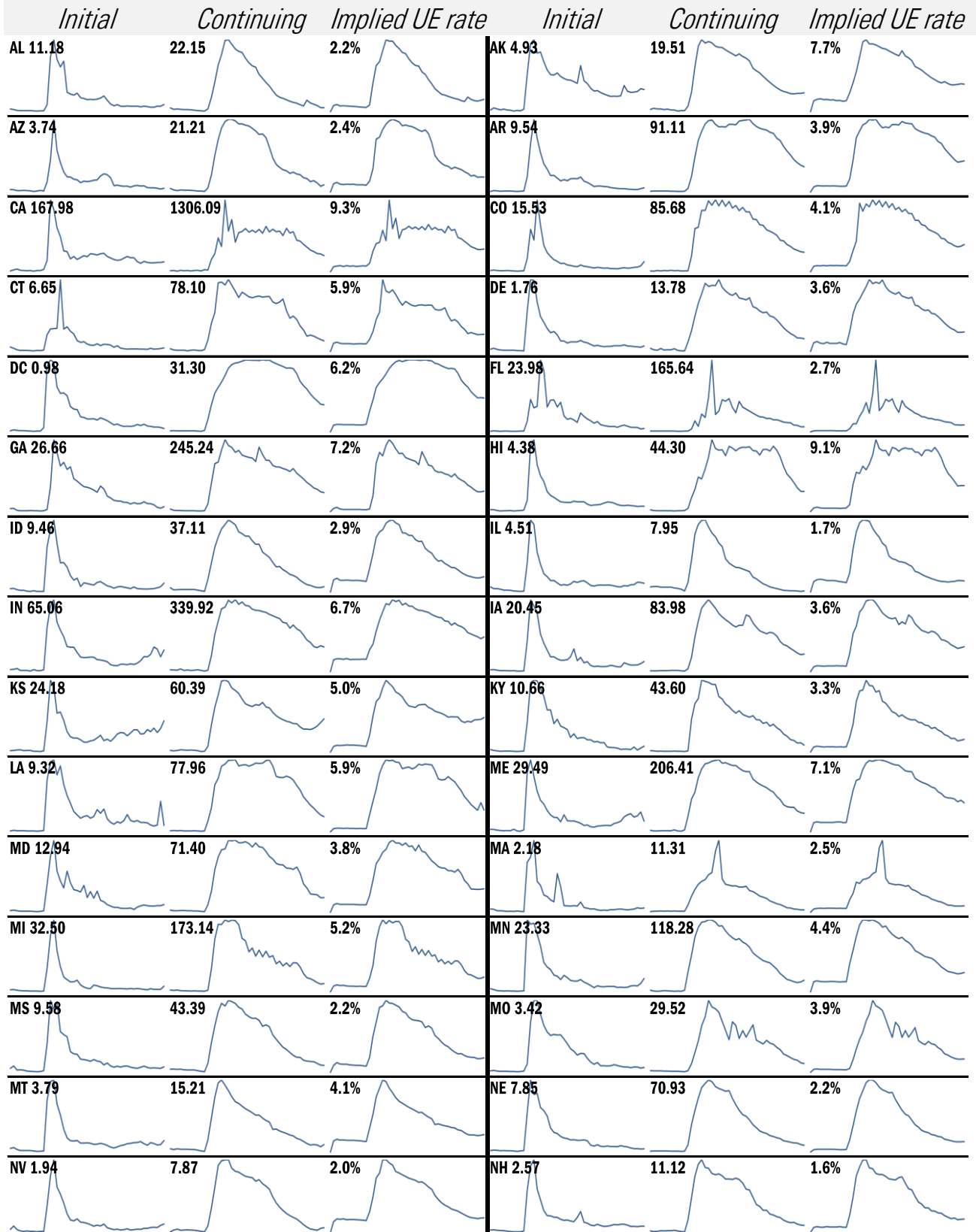


Source: Department of Labor, Bloomberg, TrendMacro calculations

For more information contact us:

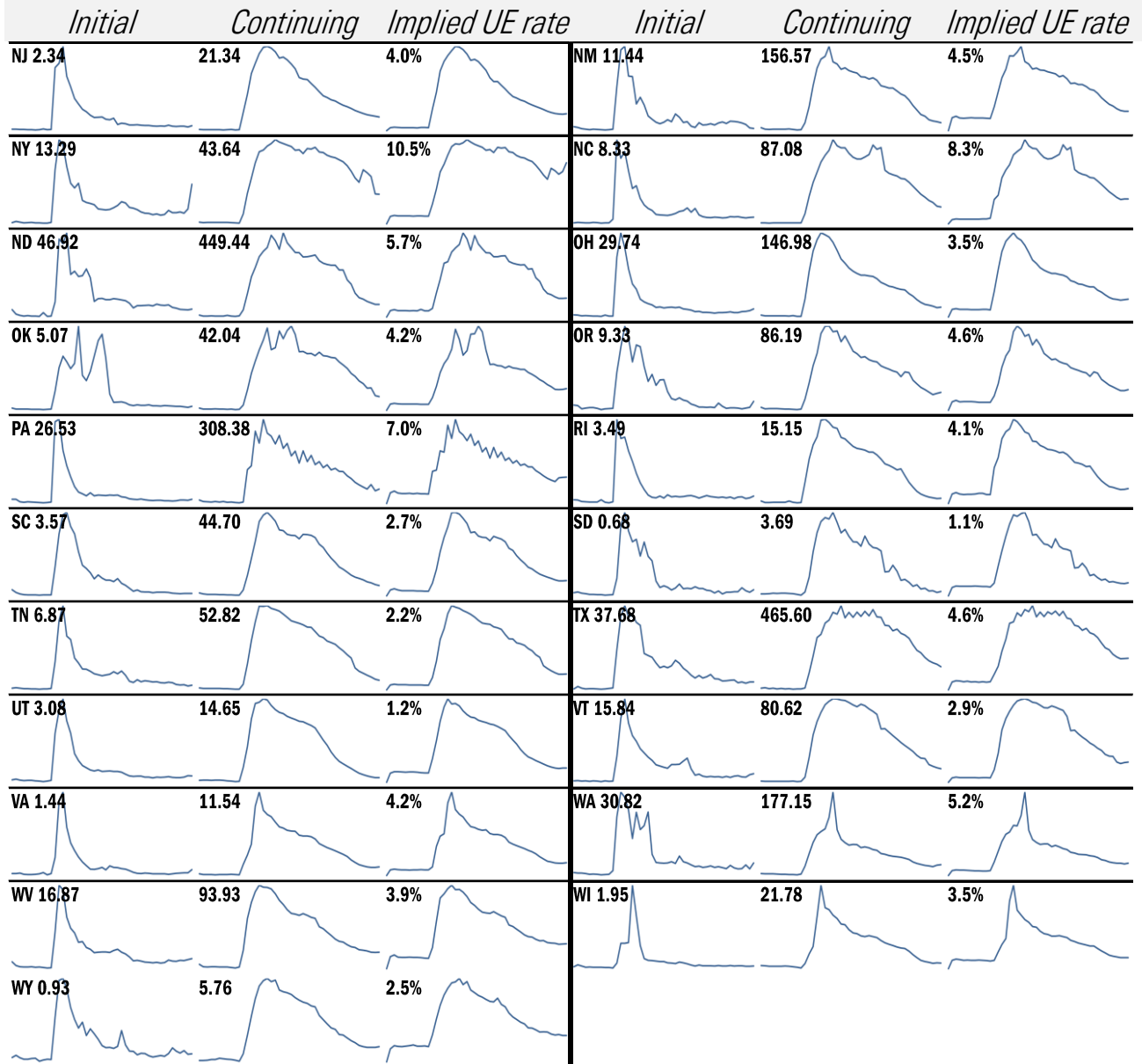
Donald Luskin: 312 273 6766 don@trendmacro.com
 Thomas Demas: 704 552 3625 tdemas@trendmacro.com

State by state unemployment insurance claims (thousands)



Source: Department of Labor, TrendMacro calculations

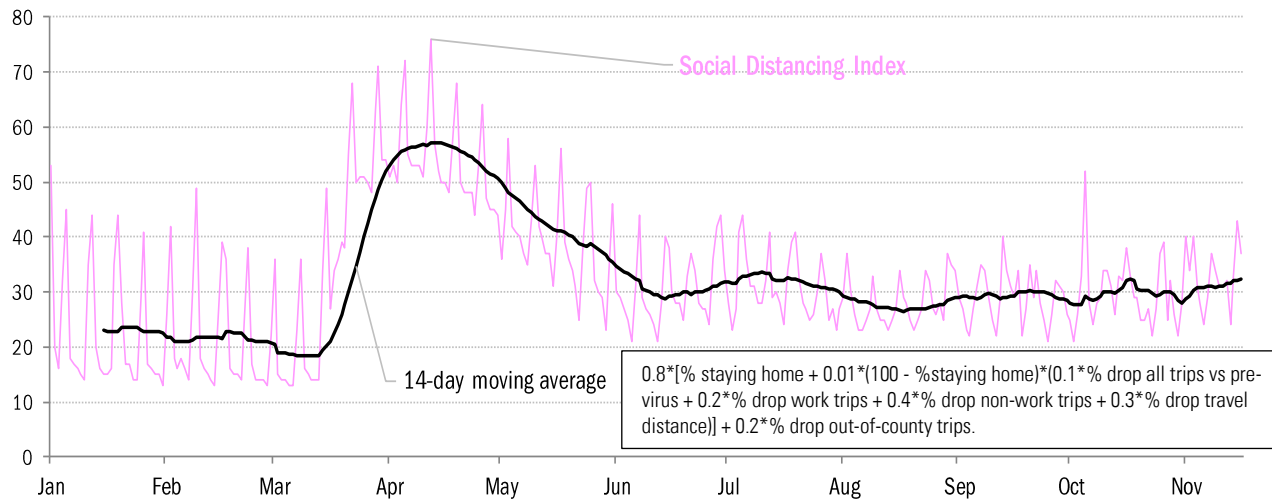
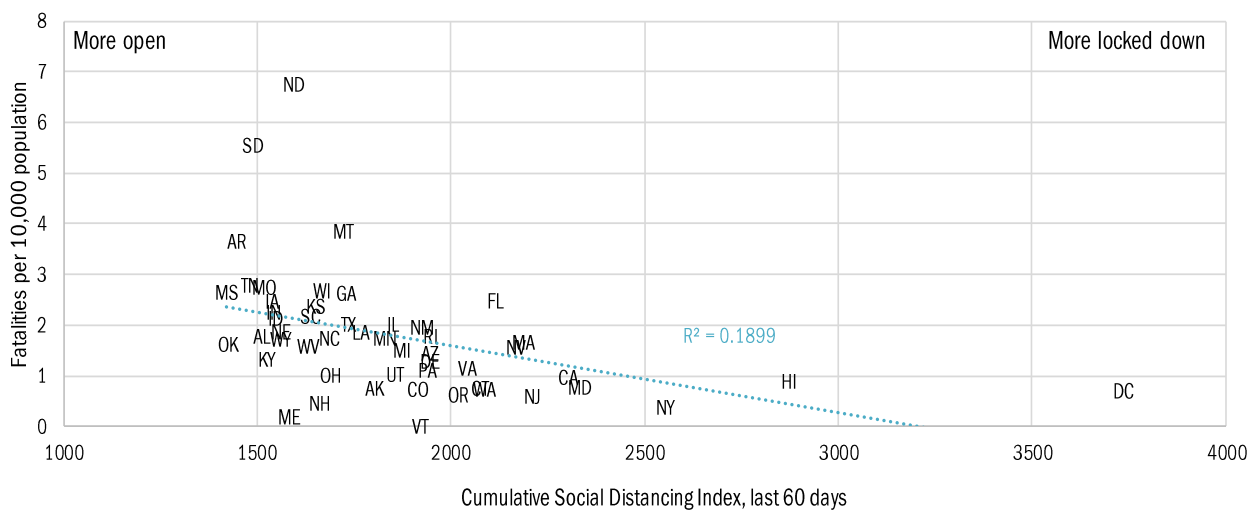
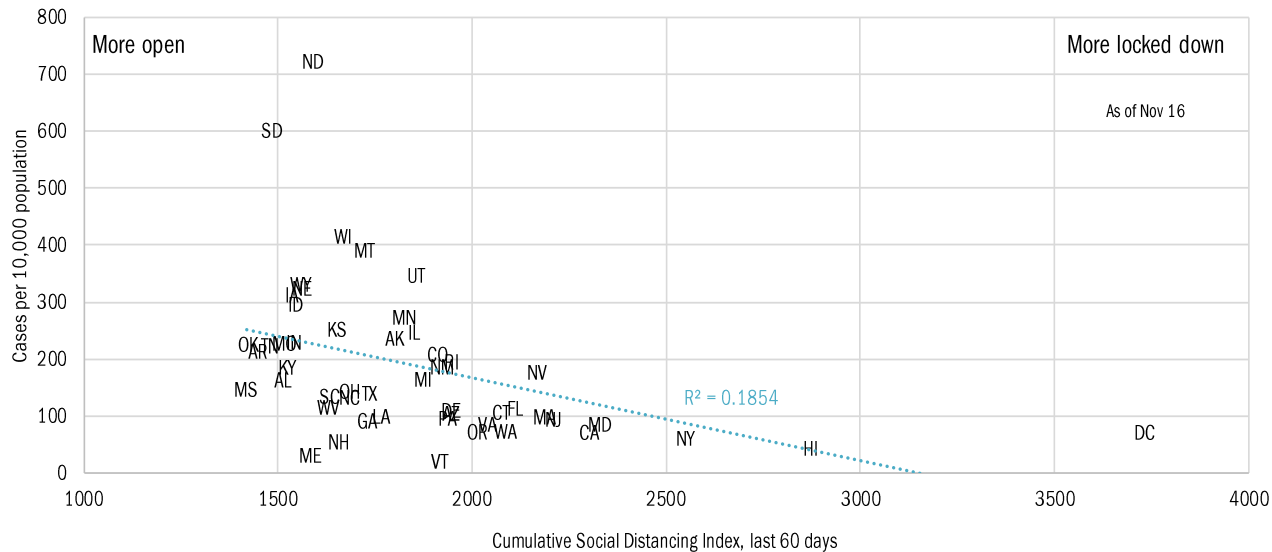
State by state unemployment insurance claims (thousands)



Source: Department of Labor, TrendMacro calculations

Assessing the costs of a "second wave" after opening up the US economy

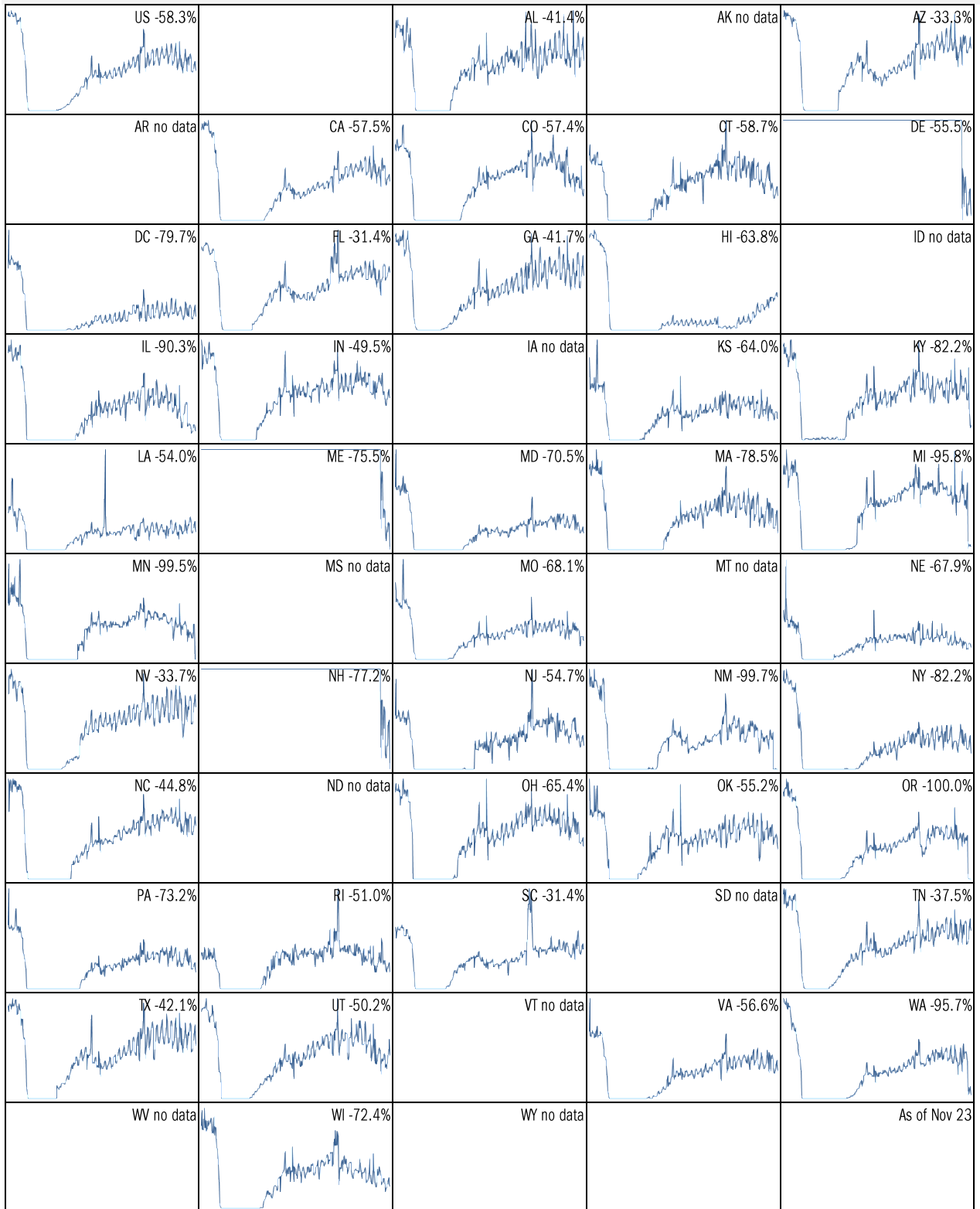
Covid-2019 fatalities and cases vs social distancing measured by cell-phone data



Source: [University of Maryland COVID-19 Impact Analysis Platform](#), TrendMacro calculations

Make America eat again:

YOY change in seated diners in restaurants Feb 18 to present ■ Positive



Source: [Open Table](#), TrendMacro calculations

Make America move again: Mobility from Feb 5 vs Jan 3 – Feb 6 baseline ■ Positive

| | <i>Retail/rec</i> | <i>Grocery/pharm</i> | <i>Parks</i> | <i>Transit stations</i> | <i>Workplaces</i> | <i>Time at home</i> |
|---------------|-------------------|----------------------|--------------|-------------------------|-------------------|---------------------|
| US -19 | | -7 | -7 | -34 | -26 | 9 |
| AL -12 | | -3 | 6 | -9 | -18 | 5 |
| AK -16 | | -8 | -5 | -28 | -23 | 11 |
| AZ -19 | | -11 | -18 | -24 | -28 | 8 |
| AR -11 | | -2 | 40 | -4 | -20 | 5 |
| CA -27 | | -11 | -22 | -44 | -32 | 11 |
| CO -23 | | -9 | -4 | -39 | -31 | 12 |
| CT -17 | | -8 | 9 | -32 | -26 | 10 |
| DE -12 | | -3 | -1 | -37 | -25 | 8 |
| DC -50 | | -22 | -39 | -65 | -47 | 17 |
| FL -20 | | -12 | -26 | -36 | -25 | 7 |
| GA -14 | | -5 | 9 | -29 | -23 | 7 |
| HI -34 | | -21 | -45 | -55 | -31 | 12 |
| ID -8 | | -1 | 16 | -12 | -20 | 7 |
| IL -25 | | -6 | -8 | -41 | -29 | 11 |

Source: [Google Mobility Reports](https://www.google.com/covid19/mobility/), TrendMacro calculations

Make America move again: Mobility from Feb 5 vs Jan 3 – Feb 6 baseline ■ Positive

| | <i>Retail/rec</i> | <i>Grocery/pharm</i> | <i>Parks</i> | <i>Transit stations</i> | <i>Workplaces</i> | <i>Residential</i> |
|---------------|-------------------|----------------------|--------------|-------------------------|-------------------|--------------------|
| IN -13 | | -4 | 23 | -10 | -22 | 7 |
| IA -13 | | 6 | 27 | -18 | -20 | 8 |
| KS -14 | | -7 | 34 | -8 | -21 | 7 |
| KY -16 | | -1 | 23 | -8 | -23 | 7 |
| LA -15 | | -4 | -14 | -18 | -20 | 5 |
| ME -15 | | 0 | 26 | -16 | -18 | 7 |
| MD -21 | | -9 | 13 | -41 | -31 | 12 |
| MA -24 | | -11 | 0 | -52 | -31 | 12 |
| MI -23 | | -7 | 31 | -33 | -28 | 10 |
| MN -21 | | -12 | -6 | -45 | -29 | 13 |
| MS -11 | | -6 | 6 | 4 | -17 | 4 |
| MO -12 | | -3 | 22 | -16 | -21 | 7 |
| MT -14 | | -3 | 7 | -12 | -19 | 7 |
| NE -14 | | -4 | 27 | -15 | -21 | 8 |
| NV -20 | | -8 | -25 | -35 | -30 | 10 |

Source: [Google Mobility Reports](https://www.google.com/covid19/mobility/), TrendMacro calculations

Make America move again: Mobility from Feb 5 vs Jan 3 – Feb 6 baseline ■ Positive

| | <i>Retail/rec</i> | <i>Grocery/pharm</i> | <i>Parks</i> | <i>Transit stations</i> | <i>Workplaces</i> | <i>Residential</i> |
|---------------|-------------------|----------------------|--------------|-------------------------|-------------------|--------------------|
| NH -13 | | -3 | 16 | -26 | -21 | 9 |
| NJ -22 | | -5 | 20 | -41 | -30 | 12 |
| NM -34 | | -9 | -16 | -17 | -34 | 13 |
| NY -27 | | -8 | -11 | -43 | -29 | 11 |
| NC -14 | | -3 | 18 | -29 | -23 | 6 |
| ND -19 | | -12 | -10 | -24 | -19 | 9 |
| OH -17 | | -6 | 25 | -19 | -23 | 8 |
| OK -10 | | -2 | 8 | -4 | -20 | 6 |
| OR -24 | | -9 | -4 | -36 | -30 | 11 |
| PA -18 | | -6 | 9 | -35 | -26 | 9 |
| RI -20 | | -7 | 36 | -48 | -26 | 10 |
| SC -10 | | -3 | 4 | -8 | -19 | 5 |
| SD -10 | | 5 | 25 | -6 | -16 | 7 |
| TN -11 | | -2 | 24 | -14 | -20 | 6 |
| TX -17 | | -9 | -11 | -26 | -25 | 8 |

Source: [Google Mobility Reports](#), TrendMacro calculations

Make America move again: Mobility from Feb 5 vs Jan 3 – Feb 6 baseline ■ Positive

| | <i>Retail/rec</i> | <i>Grocery/pharm</i> | <i>Parks</i> | <i>Transit stations</i> | <i>Workplaces</i> | <i>Residential</i> |
|---------------|-------------------|----------------------|--------------|-------------------------|-------------------|--------------------|
| UT -17 | | -5 | 11 | -34 | -28 | 10 |
| VT -24 | | -11 | 3 | -47 | -25 | 10 |
| VA -17 | | -5 | 20 | -32 | -27 | 10 |
| WA -26 | | -11 | -10 | -48 | -32 | 12 |
| WV -14 | | -3 | 14 | -9 | -19 | 6 |
| WI -21 | | -6 | 17 | -27 | -23 | 10 |
| WY -18 | | -6 | -4 | -1 | -19 | 7 |

Source: [Google Mobility Reports](https://www.google.com/covid19/mobility/), TrendMacro calculations