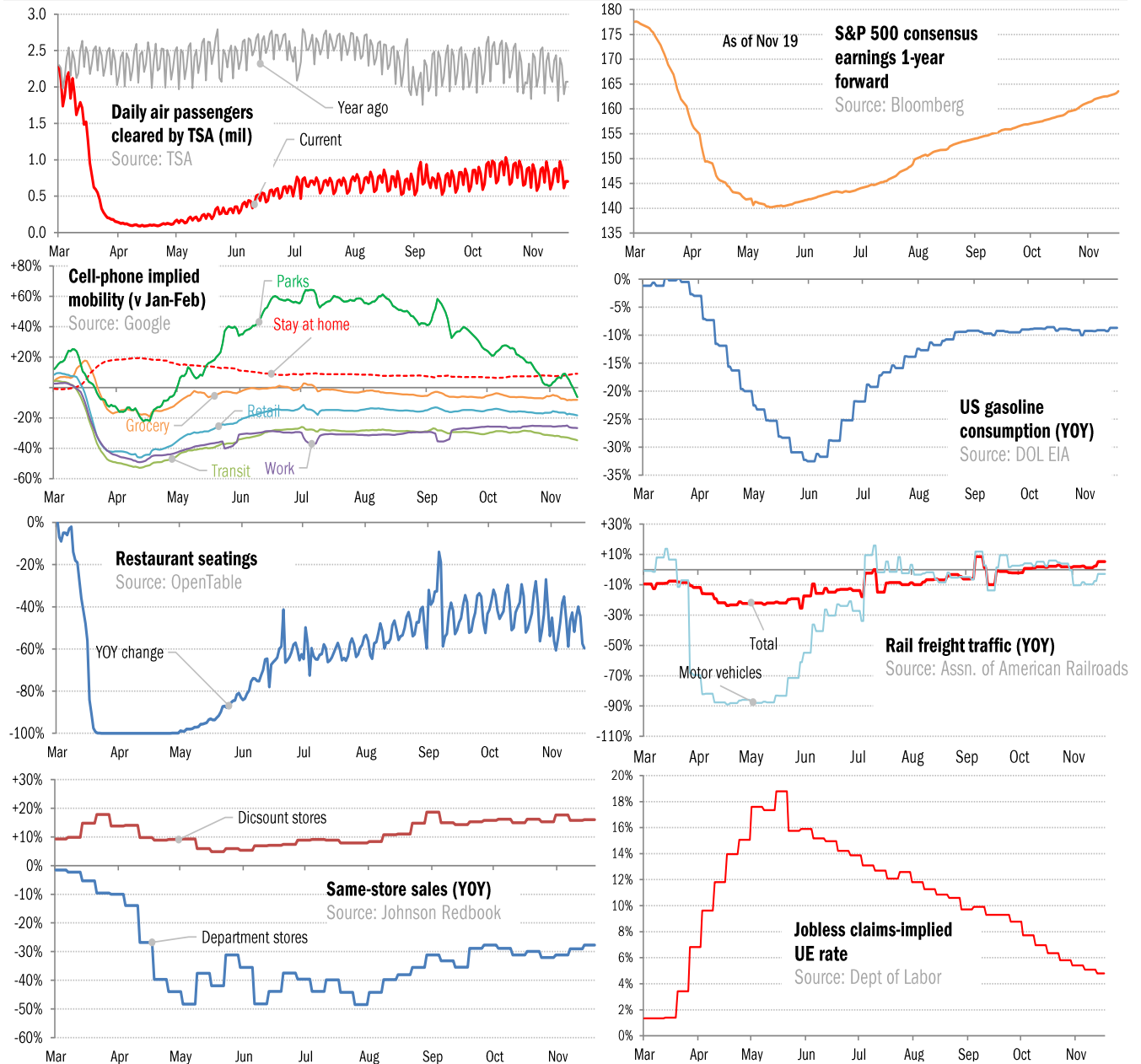


## Data Insights: High-Frequency Post-Virus US Recovery Monitor

Thursday, November 19, 2020

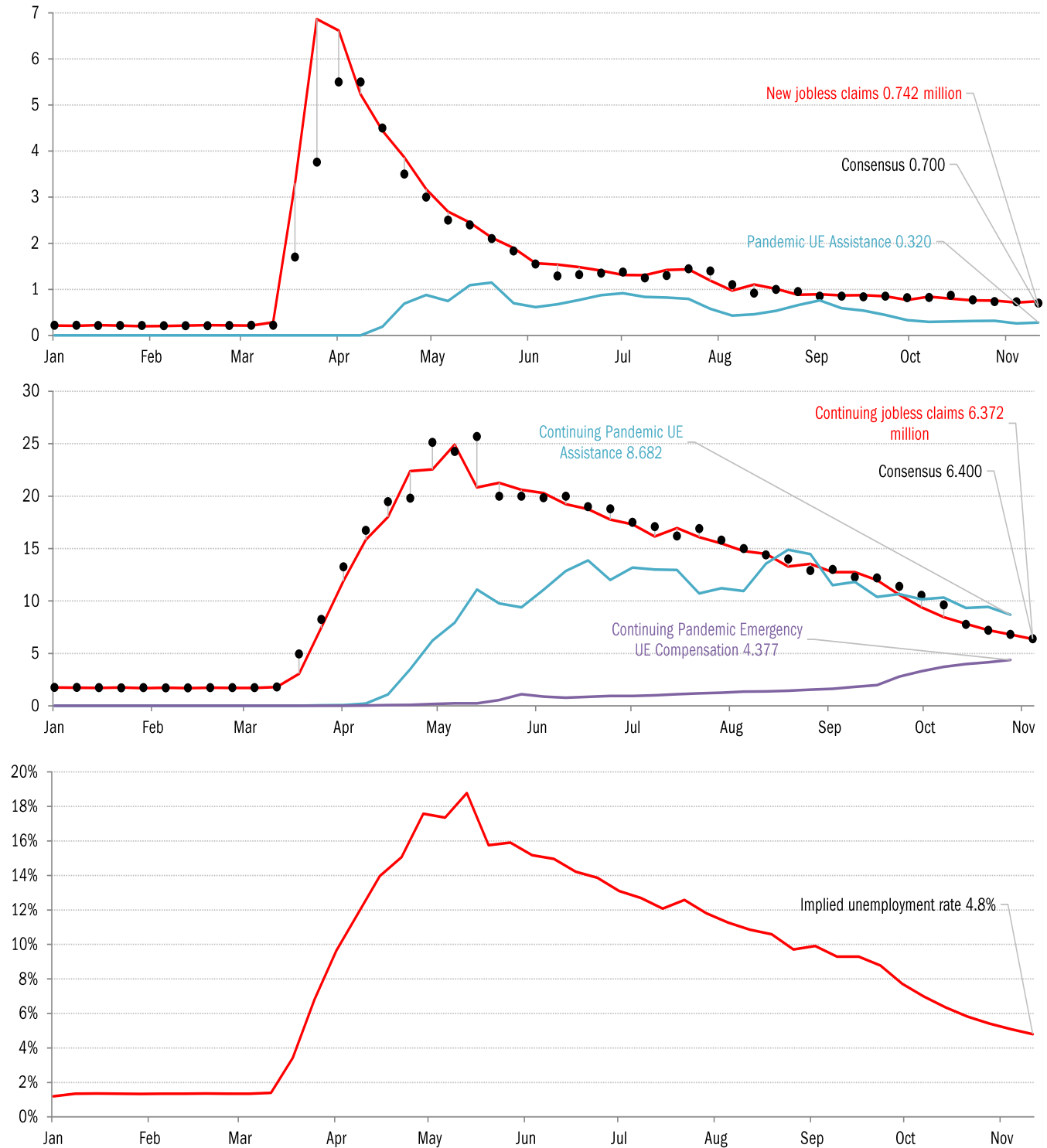
### The US high-frequency macro data dashboard

(state level and other detail in subsequent charts)



Source: As indicated, TrendMacro calculations

## High-frequency view of the US labor market: weekly unemployment claims (millions)

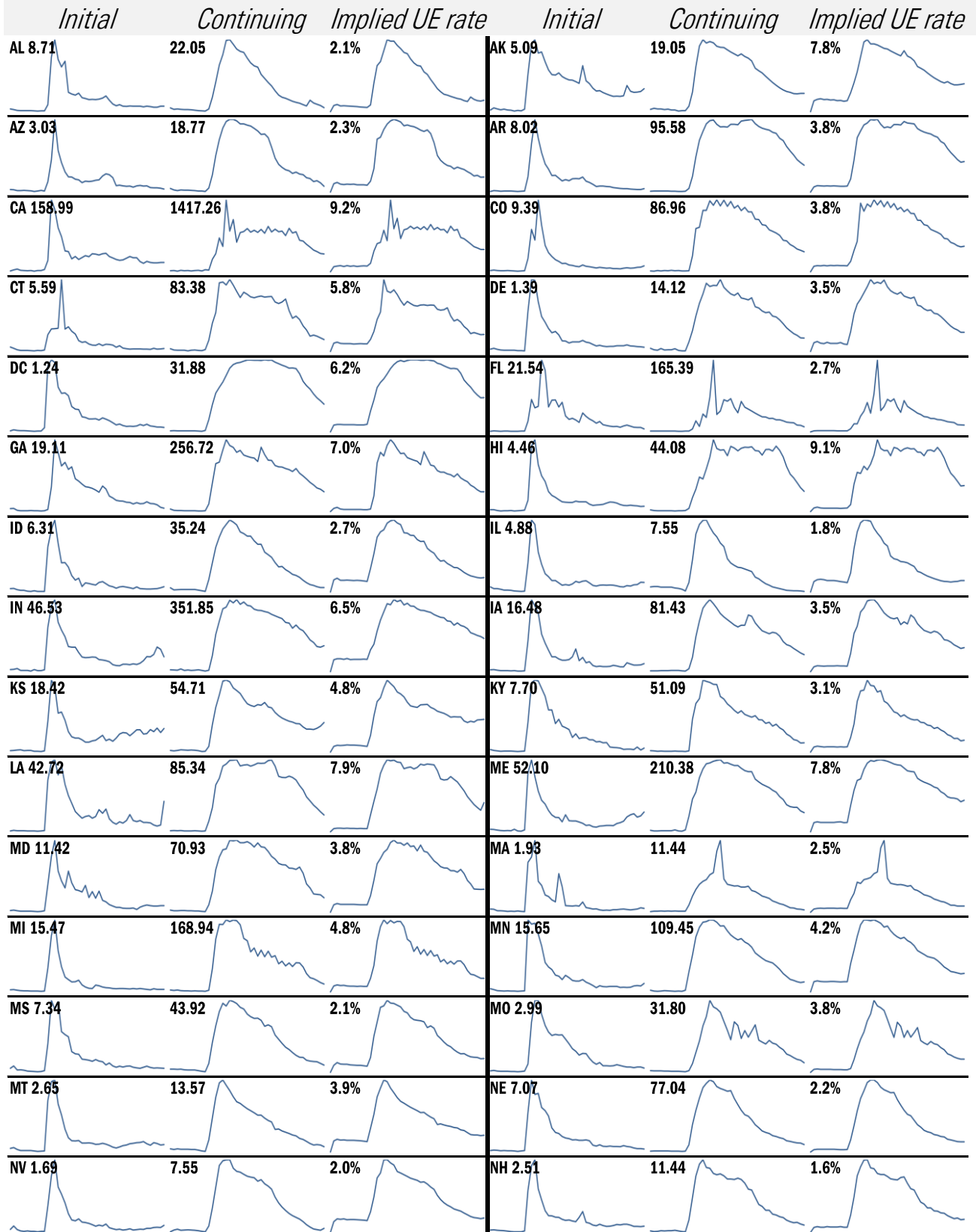


Source: Department of Labor, Bloomberg, TrendMacro calculations

### For more information contact us:

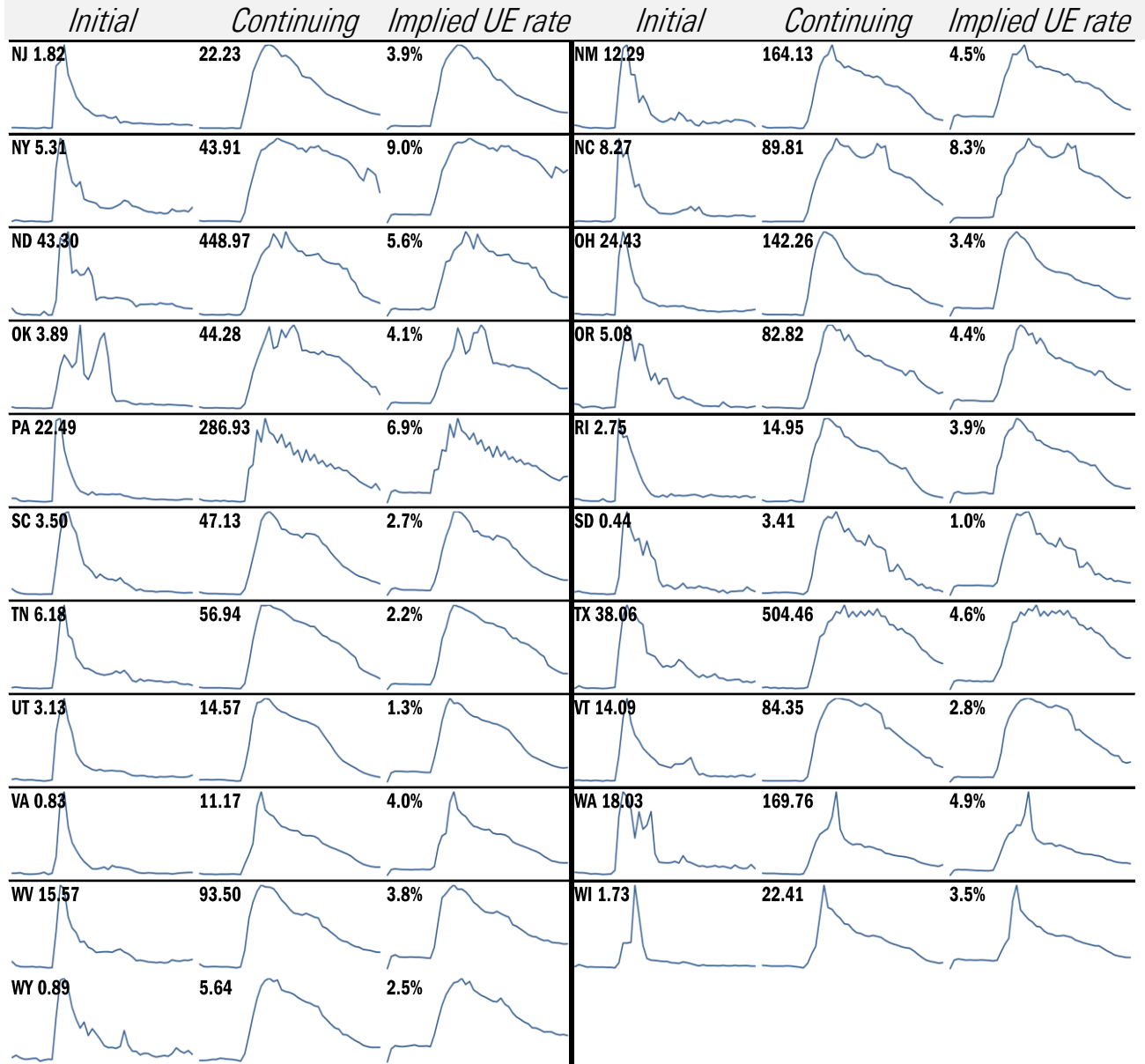
Donald Luskin: 312 273 6766 [don@trendmacro.com](mailto:don@trendmacro.com)  
 Thomas Demas: 704 552 3625 [tdemas@trendmacro.com](mailto:tdemas@trendmacro.com)

# State by state unemployment insurance claims (thousands)



Source: Department of Labor, TrendMacro calculations

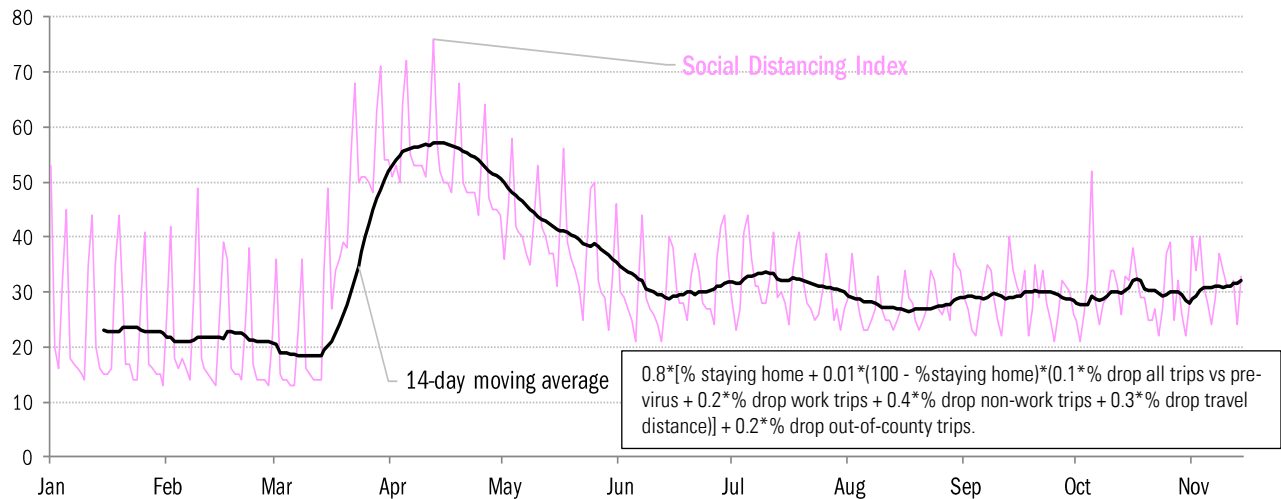
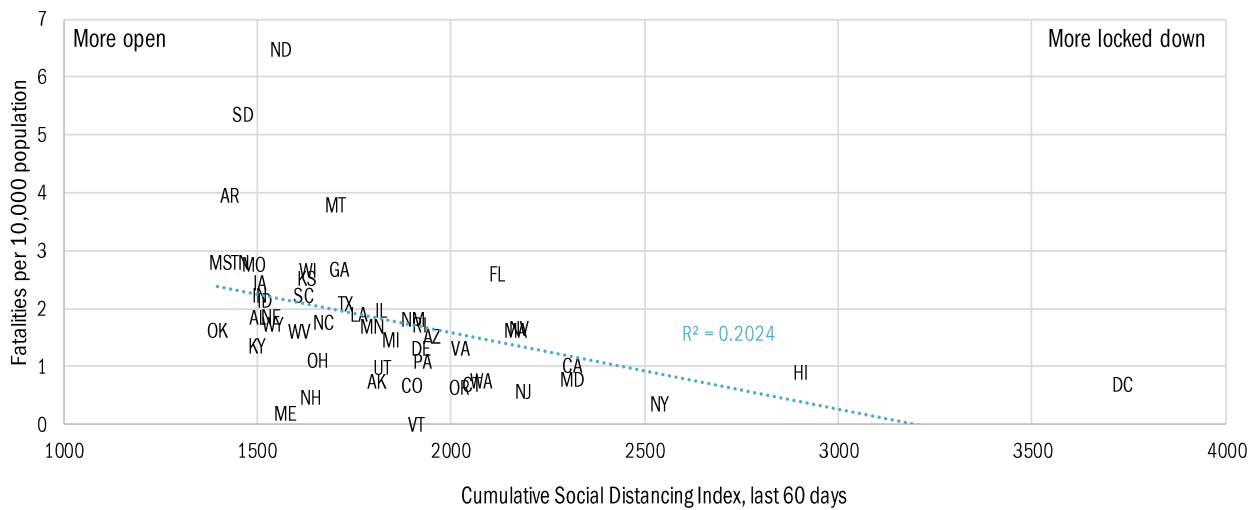
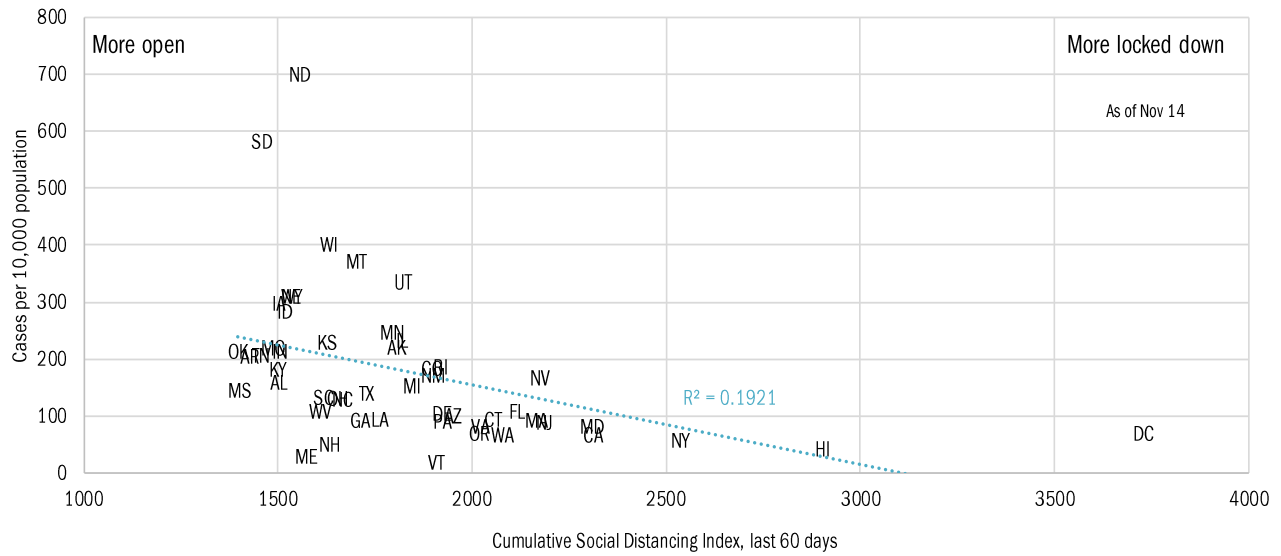
# State by state unemployment insurance claims (thousands)



Source: Department of Labor, TrendMacro calculations

# Assessing the costs of a "second wave" after opening up the US economy

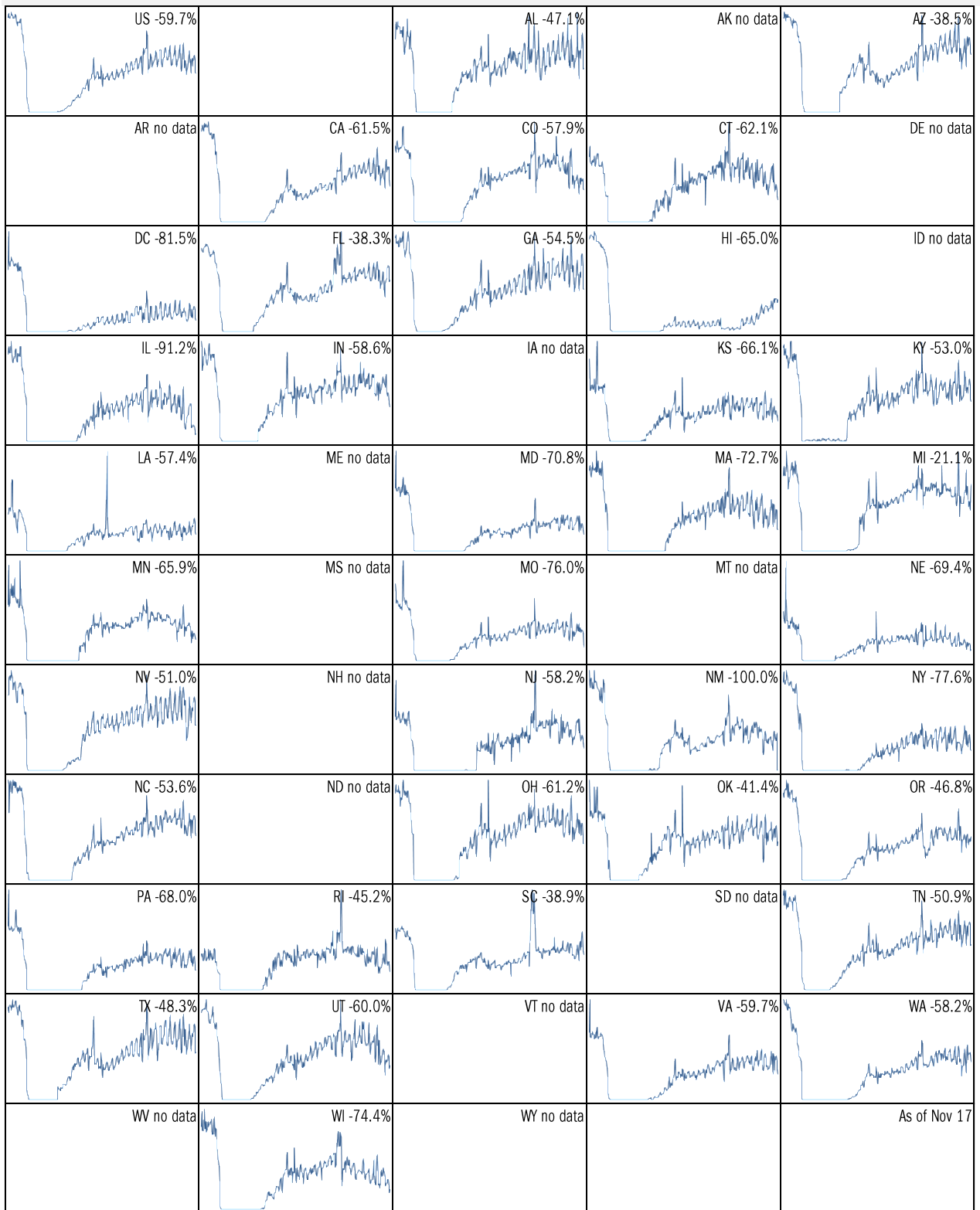
## Covid-2019 fatalities and cases vs social distancing measured by cell-phone data



Source: [University of Maryland COVID-19 Impact Analysis Platform](#), TrendMacro calculations

# Make America eat again:

YOY change in seated diners in restaurants Feb 18 to present ■ Positive



Source: [Open Table](#), TrendMacro calculations

Make America move again: Mobility from Feb 5 vs Jan 3 – Feb 6 baseline ■ Positive

	<i>Retail/rec</i>	<i>Grocery/pharm</i>	<i>Parks</i>	<i>Transit stations</i>	<i>Workplaces</i>	<i>Time at home</i>
<b>US -18</b>		-8	-6	-35	-27	9
<b>AL -12</b>		-4	7	-10	-20	5
<b>AK -13</b>		-7	0	-28	-24	10
<b>AZ -17</b>		-12	-18	-24	-29	9
<b>AR -9</b>		-3	41	-4	-20	5
<b>CA -25</b>		-12	-20	-43	-33	12
<b>CO -23</b>		-10	-16	-40	-31	12
<b>CT -17</b>		-9	15	-32	-26	10
<b>DE -11</b>		-5	5	-37	-26	9
<b>DC -50</b>		-24	-38	-65	-48	17
<b>FL -22</b>		-15	-34	-40	-29	9
<b>GA -14</b>		-7	8	-31	-24	7
<b>HI -33</b>		-20	-43	-57	-35	12
<b>ID -9</b>		-2	8	-14	-22	7
<b>IL -24</b>		-6	-3	-41	-29	11

Source: [Google Mobility Reports](https://www.google.com/covid19/mobility/), TrendMacro calculations

Make America move again: Mobility from Feb 5 vs Jan 3 – Feb 6 baseline ■ Positive

	<i>Retail/rec</i>	<i>Grocery/pharm</i>	<i>Parks</i>	<i>Transit stations</i>	<i>Workplaces</i>	<i>Residential</i>
<b>IN -11</b>		-4	30	-10	-21	7
<b>IA -12</b>		6	16	-18	-20	8
<b>KS -13</b>		-7	24	-9	-22	7
<b>KY -15</b>		-2	30	-8	-23	7
<b>LA -15</b>		-5	-12	-19	-21	5
<b>ME -12</b>		2	45	-13	-20	7
<b>MD -20</b>		-10	18	-42	-32	12
<b>MA -22</b>		-11	12	-52	-32	12
<b>MI -18</b>		-7	39	-31	-25	9
<b>MN -22</b>		-13	-14	-46	-30	13
<b>MS -10</b>		-7	7	3	-18	4
<b>MO -11</b>		-3	19	-17	-22	7
<b>MT -15</b>		-5	-2	-12	-20	8
<b>NE -15</b>		-5	5	-16	-22	9
<b>NV -17</b>		-7	-24	-34	-30	10

Source: [Google Mobility Reports](https://www.google.com/covid19/mobility/), TrendMacro calculations

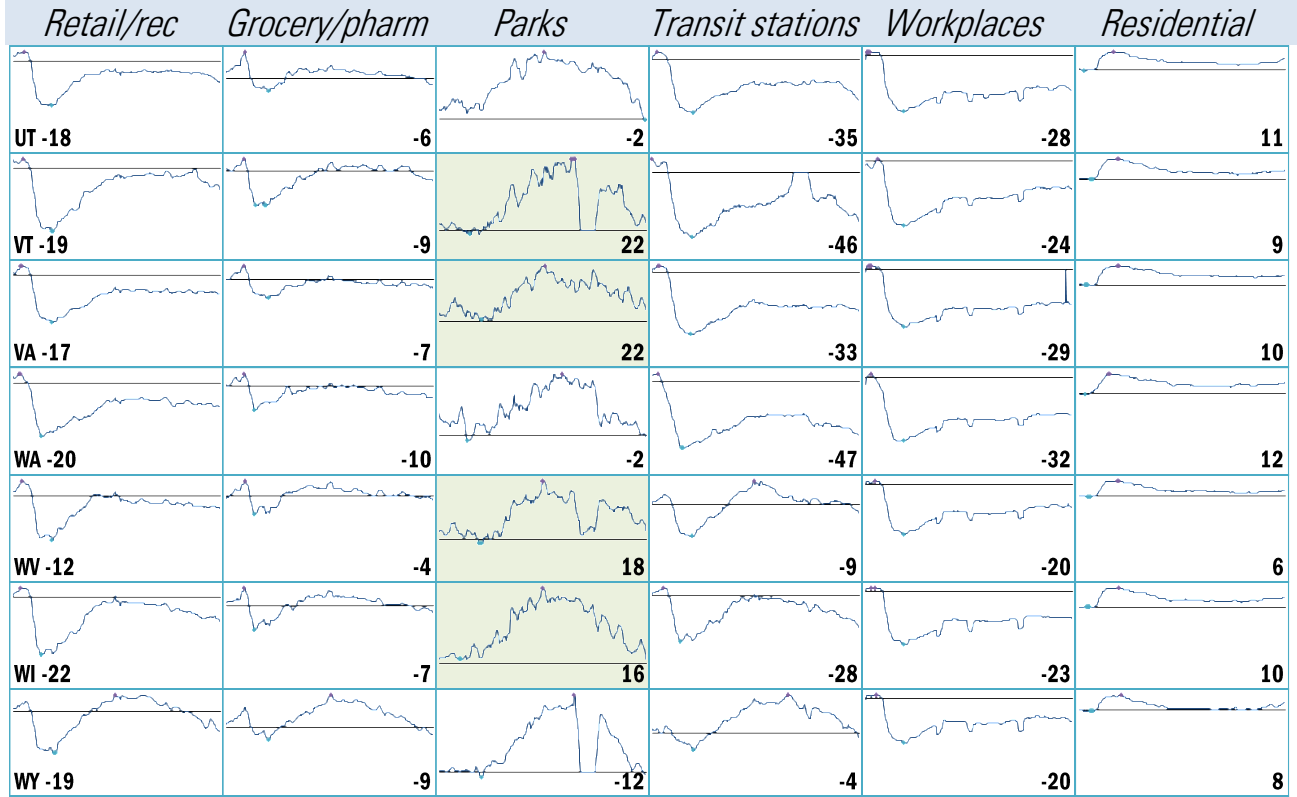


Make America move again: Mobility from Feb 5 vs Jan 3 – Feb 6 baseline ■ Positive

	<i>Retail/rec</i>	<i>Grocery/pharm</i>	<i>Parks</i>	<i>Transit stations</i>	<i>Workplaces</i>	<i>Residential</i>
<b>NH -10</b>		-2	40	-25	-22	9
<b>NJ -21</b>		-7	26	-41	-31	12
<b>NM -23</b>		-9	-17	-17	-31	12
<b>NY -26</b>		-9	-4	-43	-30	11
<b>NC -15</b>		-5	14	-30	-25	8
<b>ND -18</b>		-13	-10	-23	-22	9
<b>OH -15</b>		-5	45	-18	-22	7
<b>OK -10</b>		-3	6	-5	-20	6
<b>OR -19</b>		-8	1	-35	-29	10
<b>PA -17</b>		-6	17	-34	-26	9
<b>RI -18</b>		-8	55	-47	-28	10
<b>SC -11</b>		-5	0	-10	-20	6
<b>SD -11</b>		5	12	-8	-18	8
<b>TN -10</b>		-3	30	-15	-21	6
<b>TX -17</b>		-9	-9	-26	-26	8

Source: [Google Mobility Reports](https://www.google.com/covid19/mobility/), TrendMacro calculations

Make America move again: Mobility from Feb 5 vs Jan 3 – Feb 6 baseline ■ Positive



Source: [Google Mobility Reports](https://www.google.com/covid19/mobility/), TrendMacro calculations