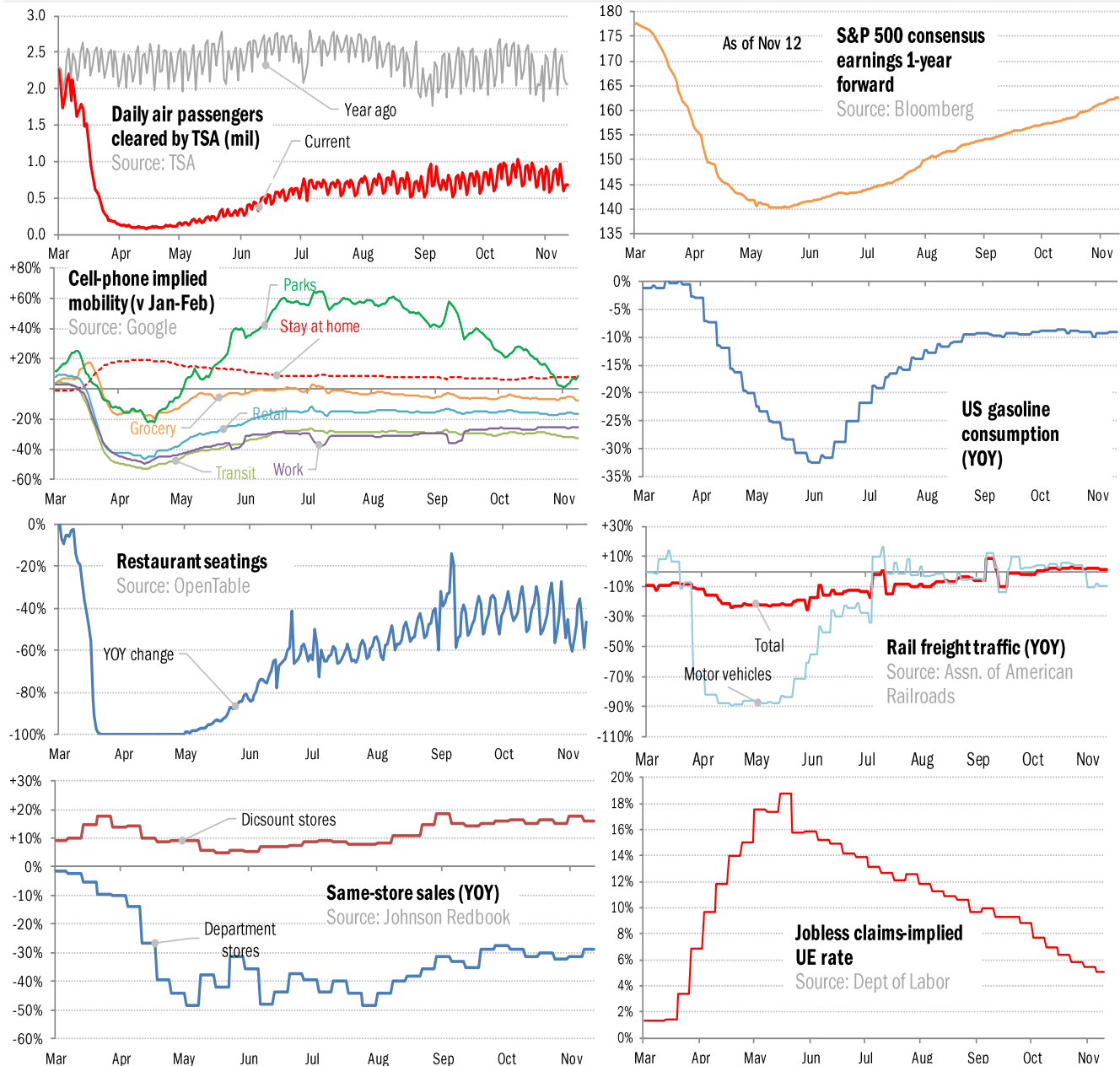


Data Insights: High-Frequency Post-Virus US Recovery Monitor

Thursday, November 12, 2020

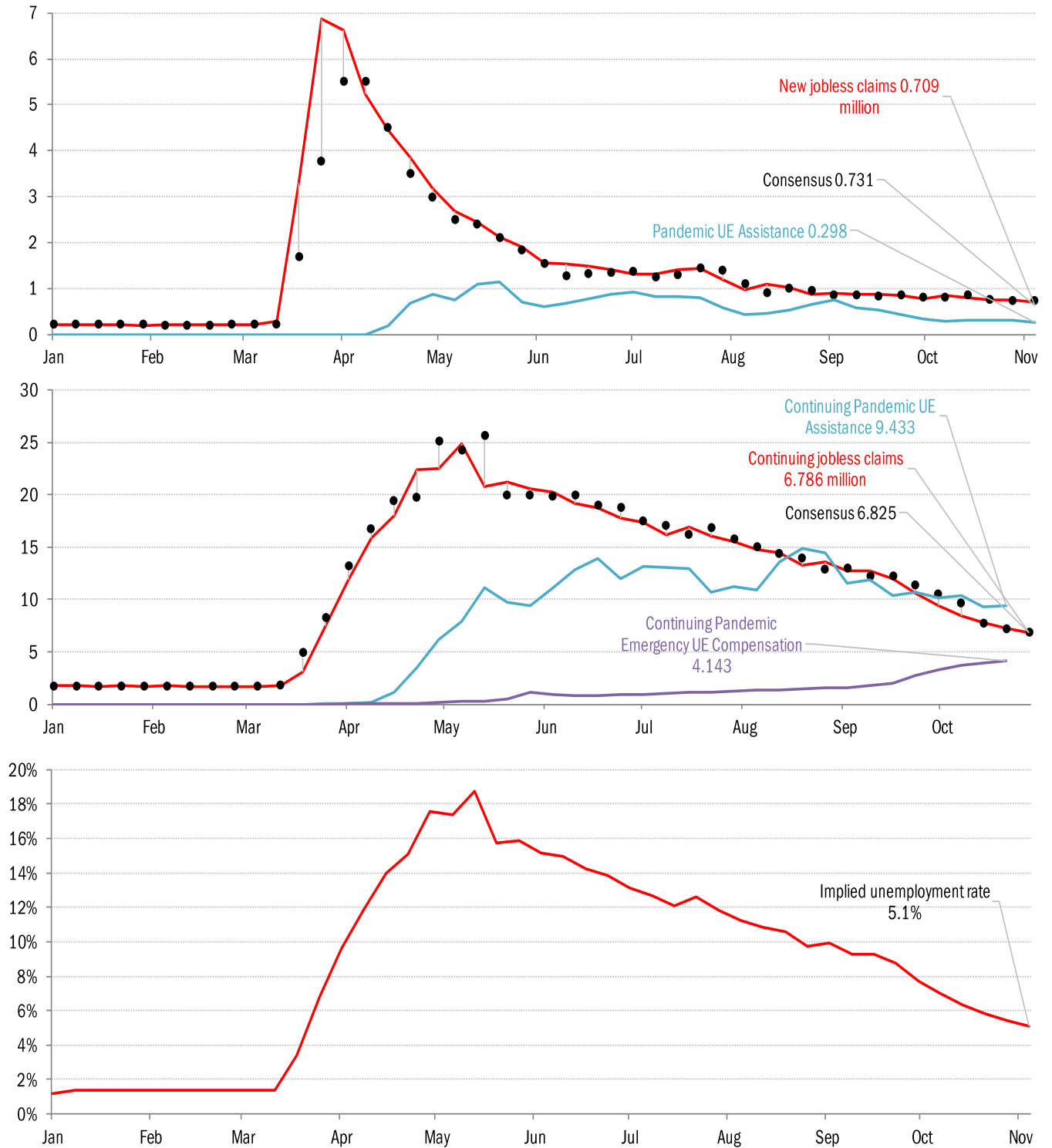
The US high-frequency macro data dashboard

(state level and other detail in subsequent charts)



Source: As indicated, TrendMacro calculations

High-frequency view of the US labor market: weekly unemployment claims (millions)

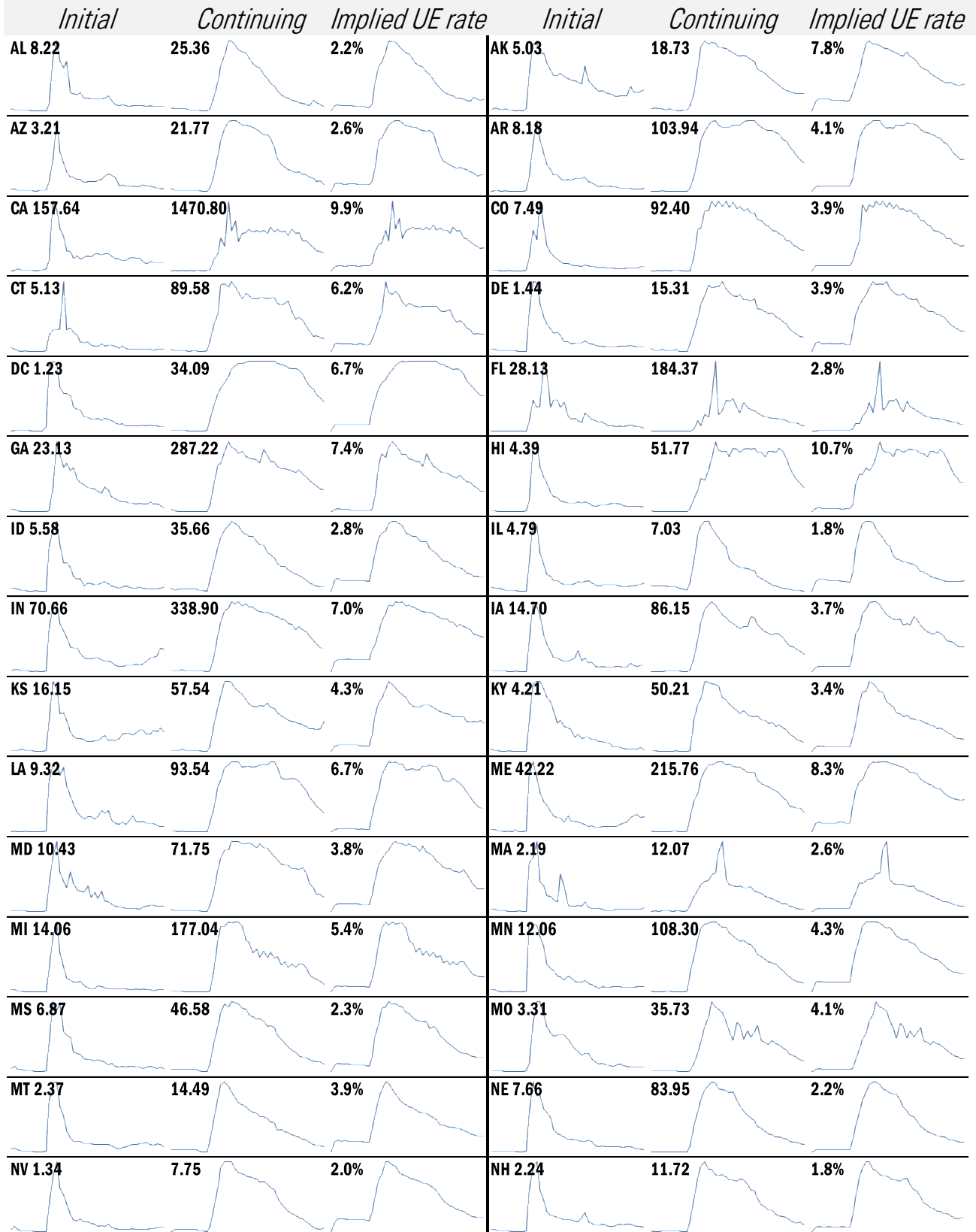


Source: Department of Labor, Bloomberg, TrendMacro calculations

For more information contact us:

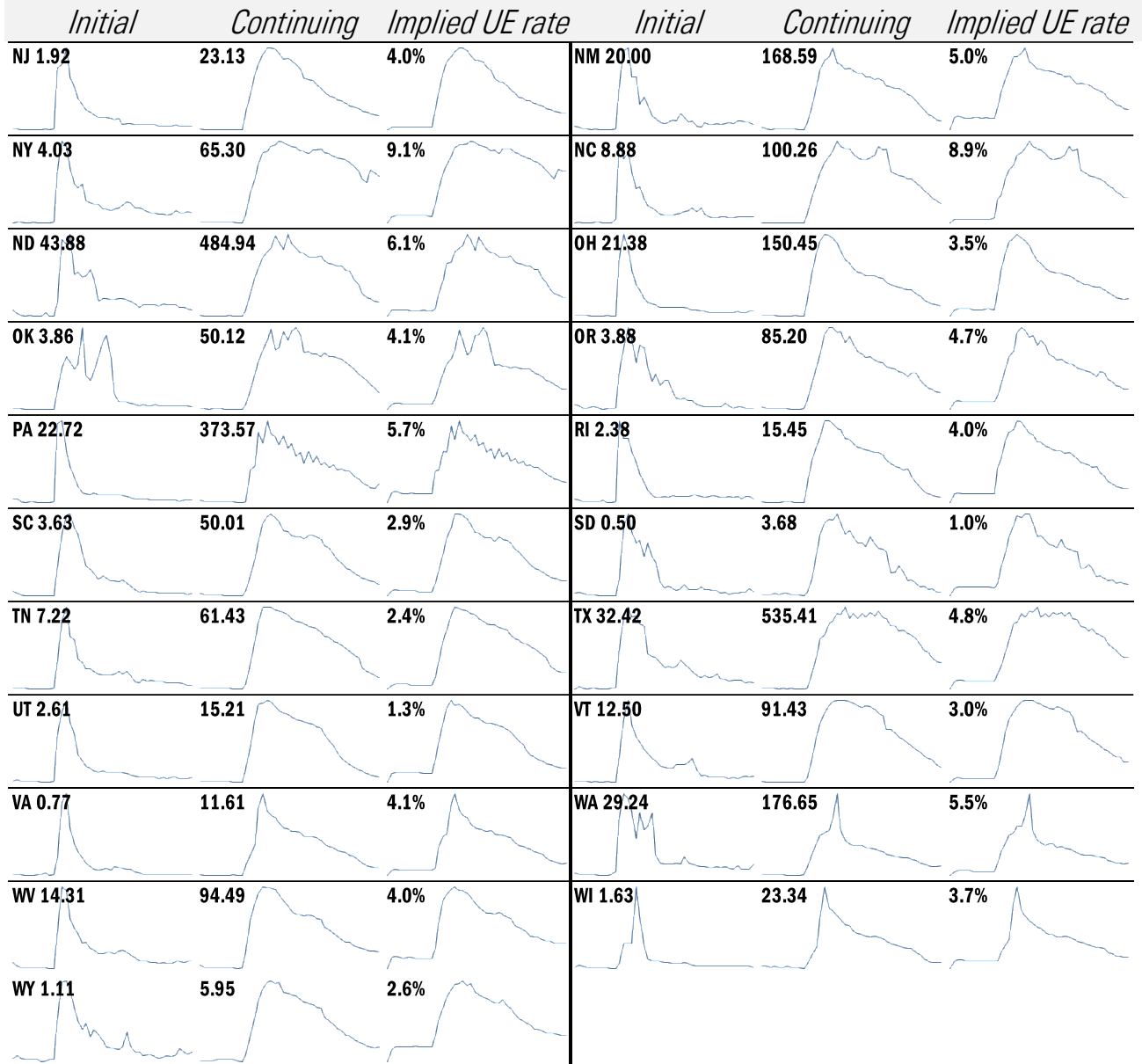
Donald Luskin: 312 273 6766 don@trendmacro.com
 Thomas Demas: 704 552 3625 tdemas@trendmacro.com

State by state unemployment insurance claims (thousands)



Source: Department of Labor, TrendMacro calculations

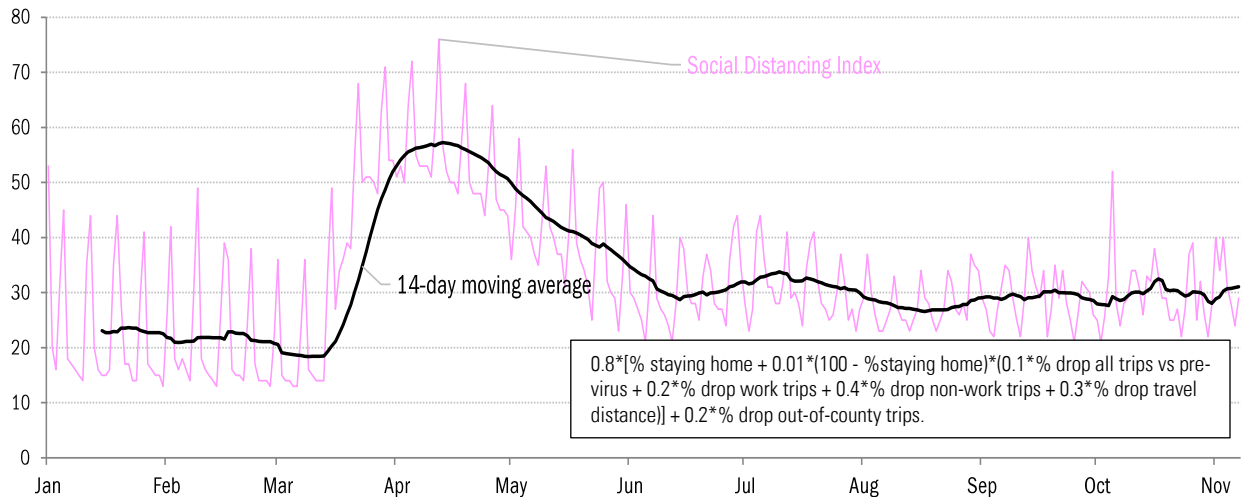
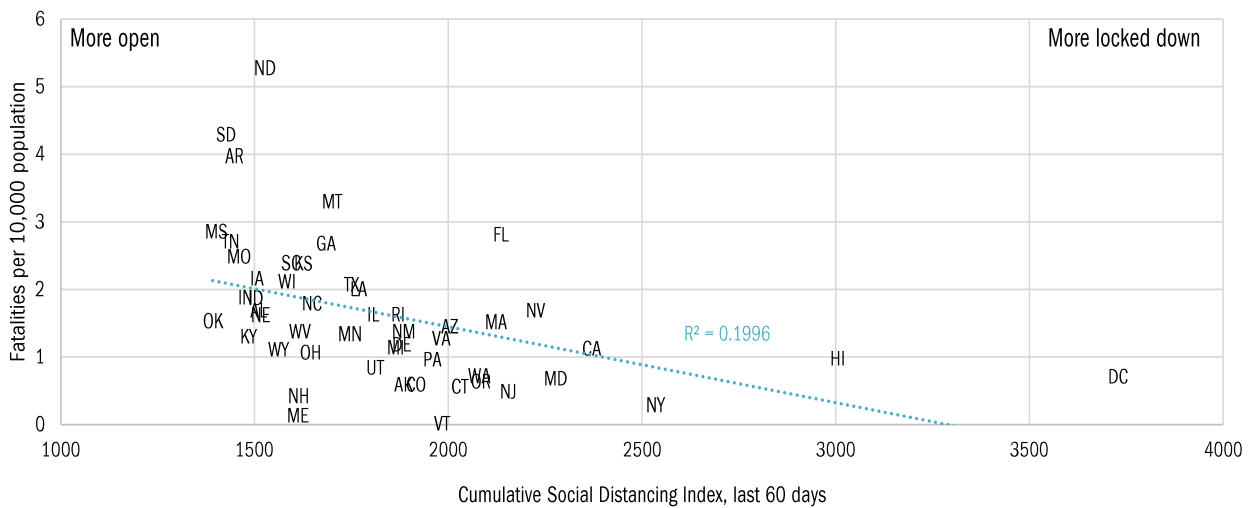
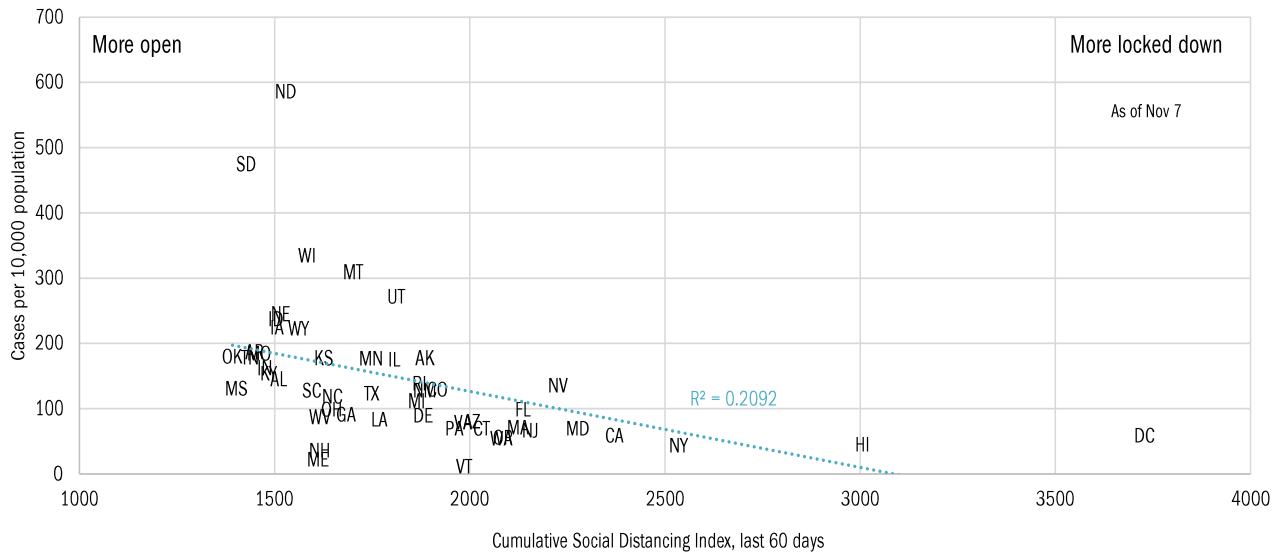
State by state unemployment insurance claims (thousands)



Source: Department of Labor, TrendMacro calculations

Assessing the costs of a "second wave" after opening up the US economy

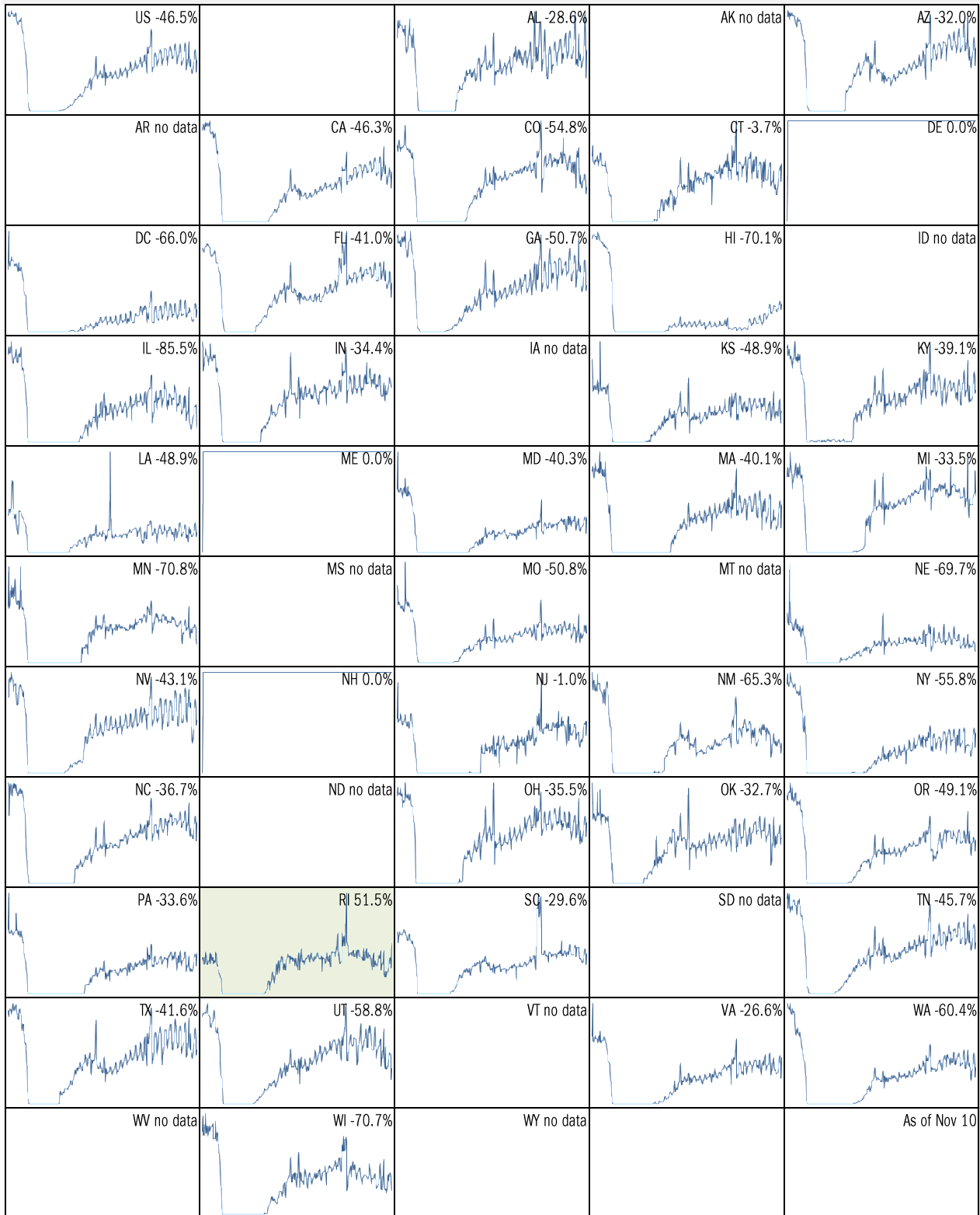
Covid-2019 fatalities and cases vs social distancing measured by cell-phone data



Source: [University of Maryland COVID-19 Impact Analysis Platform](#), TrendMacro calculations

Make America eat again:

YOY change in seated diners in restaurants Feb 18 to present ■ Positive



Source: [Open Table](#), TrendMacro calculations

Make America move again: Mobility from Feb 5 vs Jan 3 – Feb 6 baseline ■ Positive

	<i>Retail/rec</i>	<i>Grocery/pharm</i>	<i>Parks</i>	<i>Transit stations</i>	<i>Workplaces</i>	<i>Time at home</i>
US -64		73	-53	-115	-52	53
AL -9		-4	16	-9	-18	4
AK -14		-8	-3	-28	-21	10
AZ -18		-11	-18	-23	-28	8
AR -7		-2	55	-2	-18	4
CA -27		-12	-22	-43	-32	12
CO -19		-6	11	-36	-28	10
CT -13		-8	46	-28	-24	8
DE -8		-4	23	-28	-25	7
DC -47		-20	-26	-62	-47	15
FL -22		-14	-31	-39	-26	7
GA -13		-7	17	-31	-24	7
HI -35		-21	-45	-57	-33	12
ID -6		1	49	-8	-20	5
IL -19		-4	51	-36	-27	9

Source: [Google Mobility Reports](#), TrendMacro calculations

Make America move again: Mobility from Feb 5 vs Jan 3 – Feb 6 baseline ■ Positive

	<i>Retail/rec</i>	<i>Grocery/pharm</i>	<i>Parks</i>	<i>Transit stations</i>	<i>Workplaces</i>	<i>Residential</i>
IN -8		-3	79	-7	-19	5
IA -5		9	86	-12	-17	5
KS -10		-6	60	-5	-19	6
KY -12		-1	57	-7	-22	6
LA -14		-5	-12	-17	-22	5
ME -10		0	56	-10	-17	6
MD -17		-9	53	-40	-31	11
MA -20		-10	32	-50	-30	11
MI -14		-7	84	-26	-23	8
MN -14		-8	64	-41	-26	9
MS -7		-5	10	5	-17	3
MO -7		-2	58	-14	-20	5
MT -12		0	20	-7	-19	6
NE -10		-1	52	-9	-20	7
NV -18		-8	-23	-33	-29	9

Source: [Google Mobility Reports](https://www.google.com/covid19/mobility/), TrendMacro calculations

Make America move again: Mobility from Feb 5 vs Jan 3 – Feb 6 baseline ■ Positive

	<i>Retail/rec</i>	<i>Grocery/pharm</i>	<i>Parks</i>	<i>Transit stations</i>	<i>Workplaces</i>	<i>Residential</i>
NH -9		-2	56	-19	-19	8
NJ -17		-5	67	-38	-31	10
NM -22		-10	-10	-18	-29	10
NY -24		-8	19	-41	-28	9
NC -12		-3	34	-27	-23	6
ND -15		-11	21	-18	-20	7
OH -12		-5	91	-15	-20	6
OK -6		0	22	-2	-18	4
OR -18		-7	13	-33	-28	9
PA -13		-5	55	-30	-25	8
RI -15		-6	90	-44	-25	8
SC -9		-4	14	-8	-20	5
SD -5		7	68	-3	-15	5
TN -9		-2	46	-13	-20	5
TX -16		-10	-7	-26	-25	8

Source: [Google Mobility Reports](#), TrendMacro calculations

Make America move again: Mobility from Feb 5 vs Jan 3 – Feb 6 baseline ■ Positive

	<i>Retail/rec</i>	<i>Grocery/pharm</i>	<i>Parks</i>	<i>Transit stations</i>	<i>Workplaces</i>	<i>Residential</i>
UT -15		-4	29	-30	-26	9
VT -15		-8	33	-39	-21	8
VA -15		-5	45	-31	-28	9
WA -20		-10	6	-45	-31	11
WV -9		-1	39	-4	-18	5
WI -16		-3	89	-21	-21	8
WY -12		-4	25	6	-16	5

Source: [Google Mobility Reports](#), TrendMacro calculations