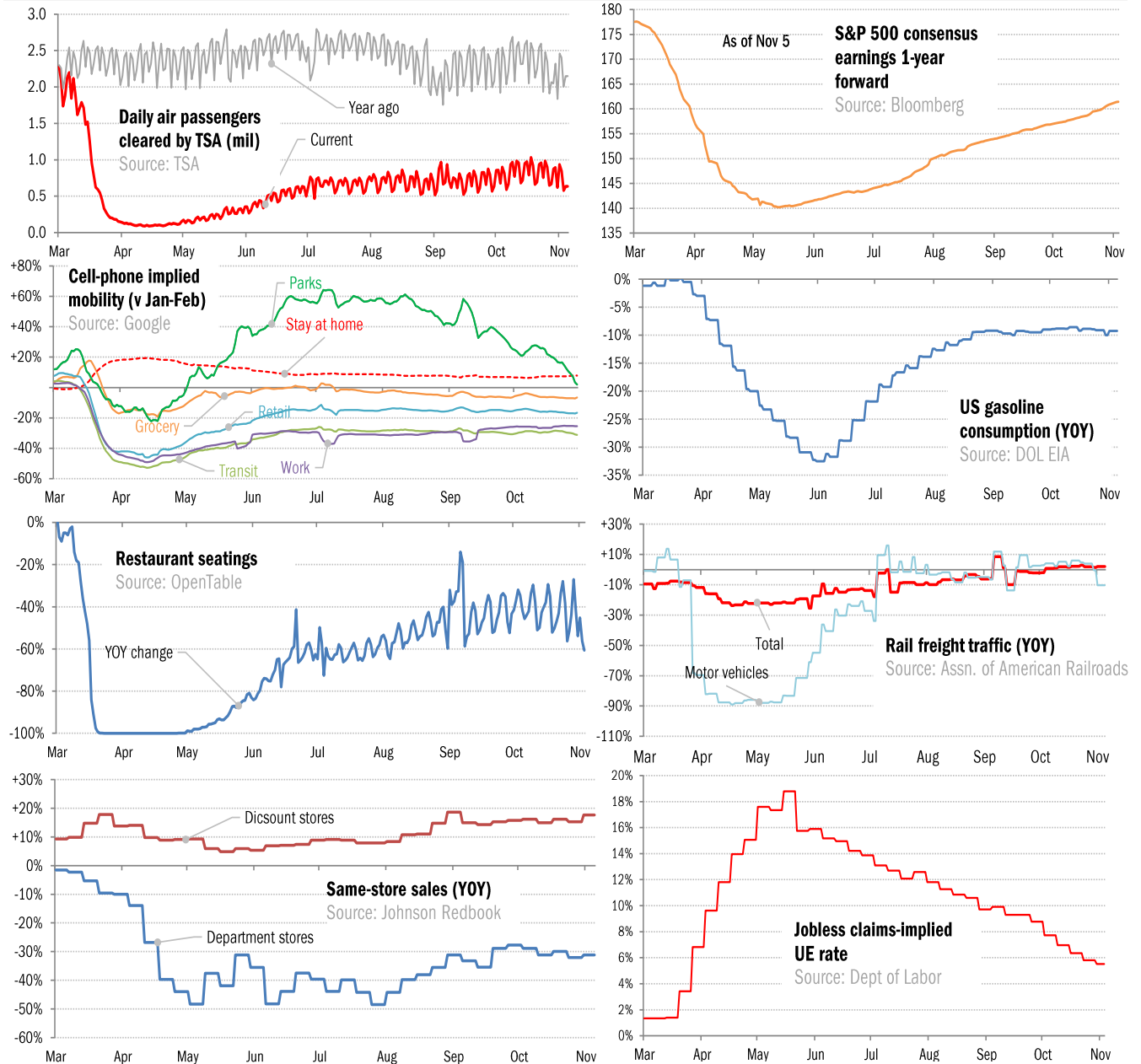


## Data Insights: High-Frequency Post-Virus US Recovery Monitor

Thursday, November 5, 2020

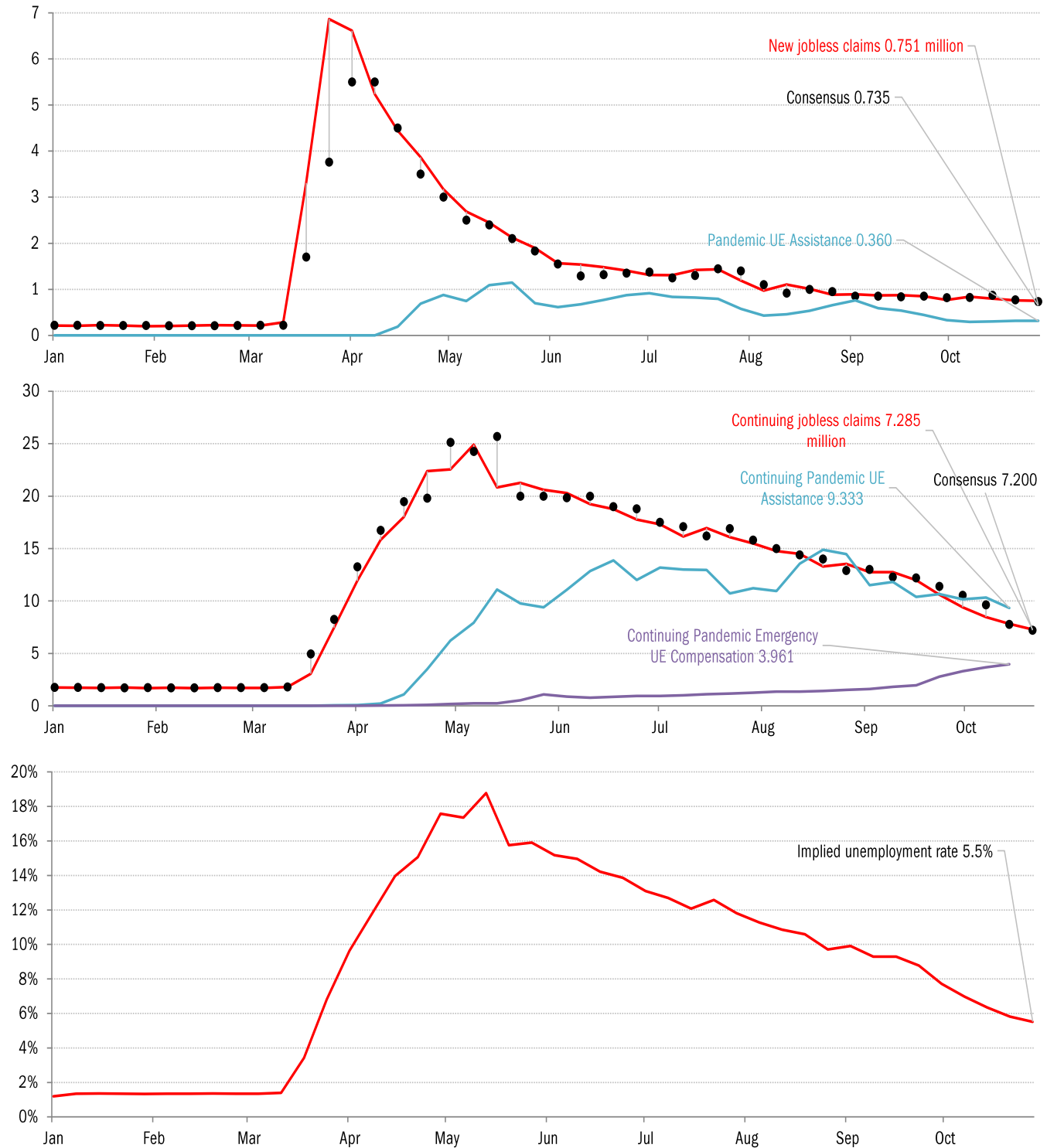
### The US high-frequency macro data dashboard

(state level and other detail in subsequent charts)



Source: As indicated, TrendMacro calculations

# High-frequency view of the US labor market: weekly unemployment claims (millions)

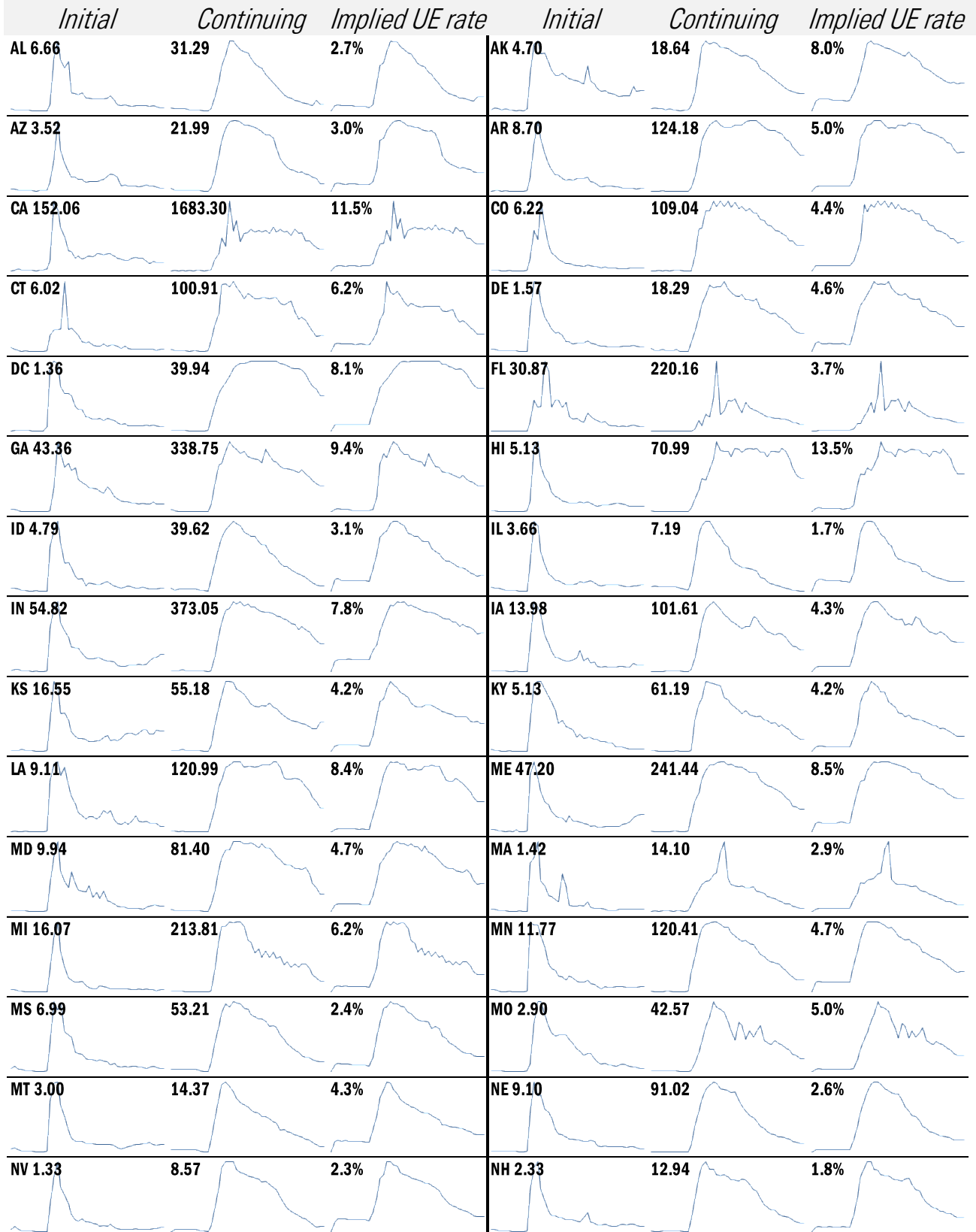


Source: Department of Labor, Bloomberg, TrendMacro calculations

**For more information contact us:**

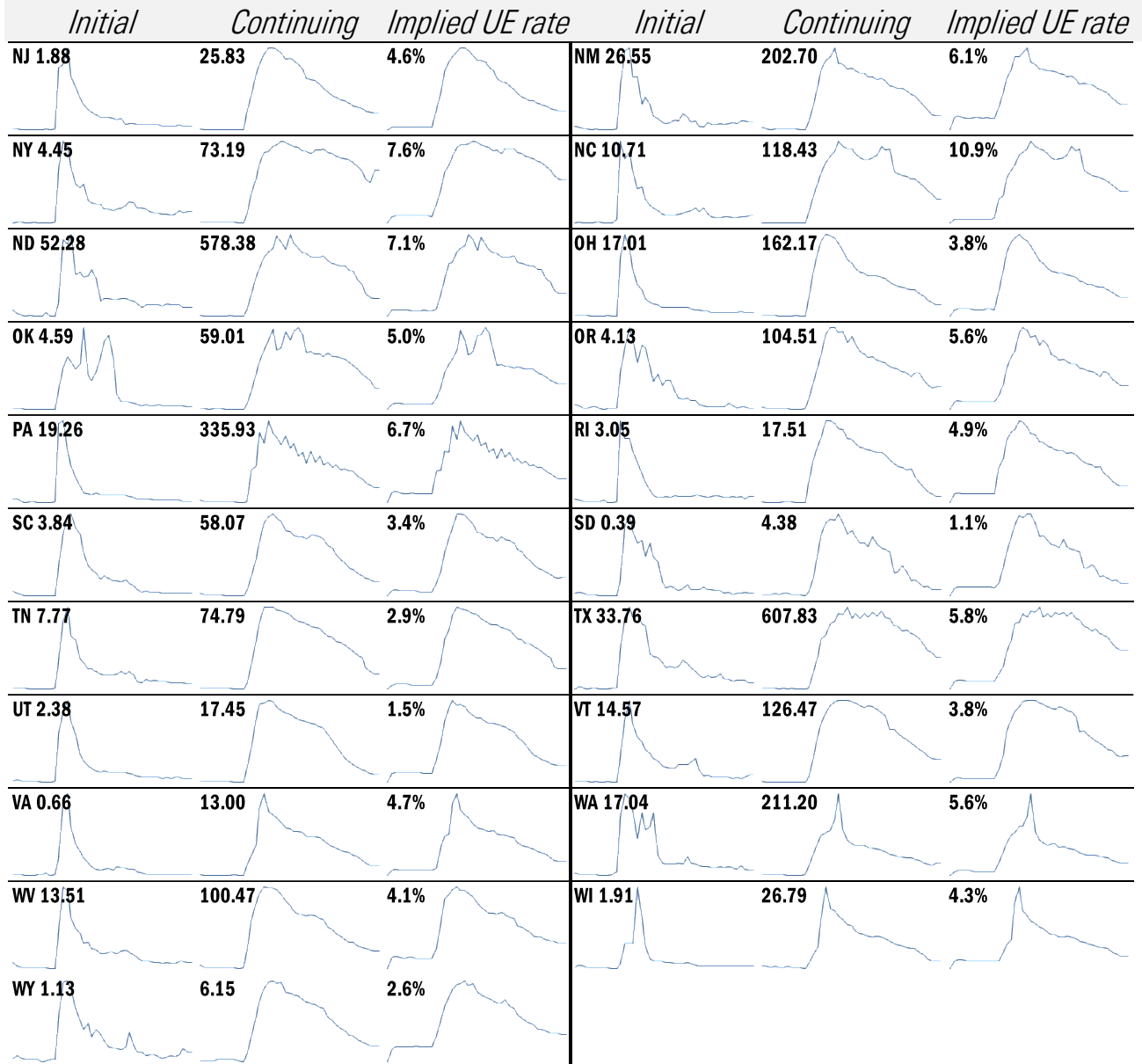
Donald Luskin: 312 273 6766 [don@trendmacro.com](mailto:don@trendmacro.com)  
 Thomas Demas: 704 552 3625 [tdemas@trendmacro.com](mailto:tdemas@trendmacro.com)

# State by state unemployment insurance claims (thousands)



Source: Department of Labor, TrendMacro calculations

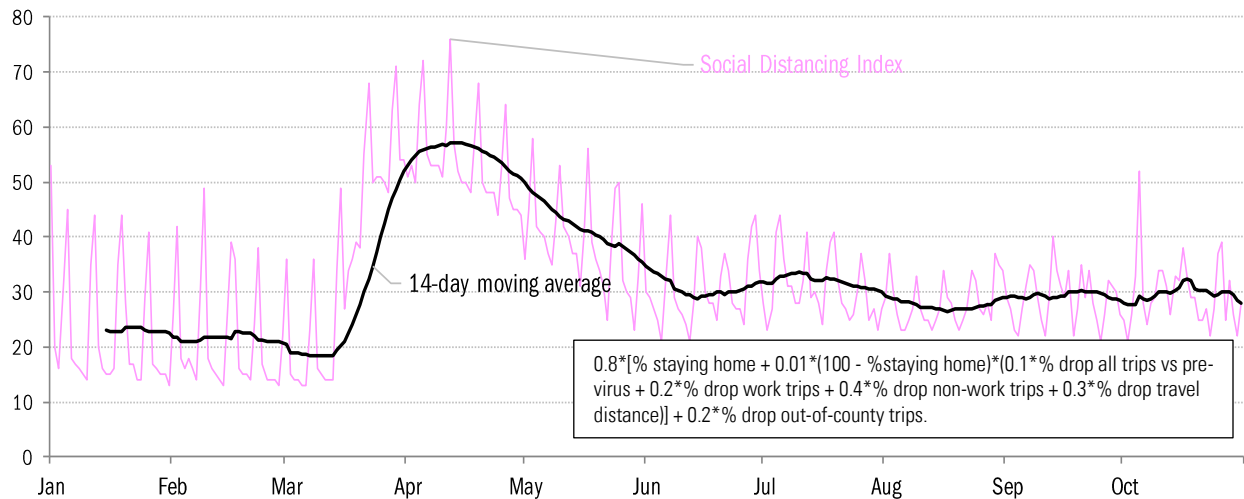
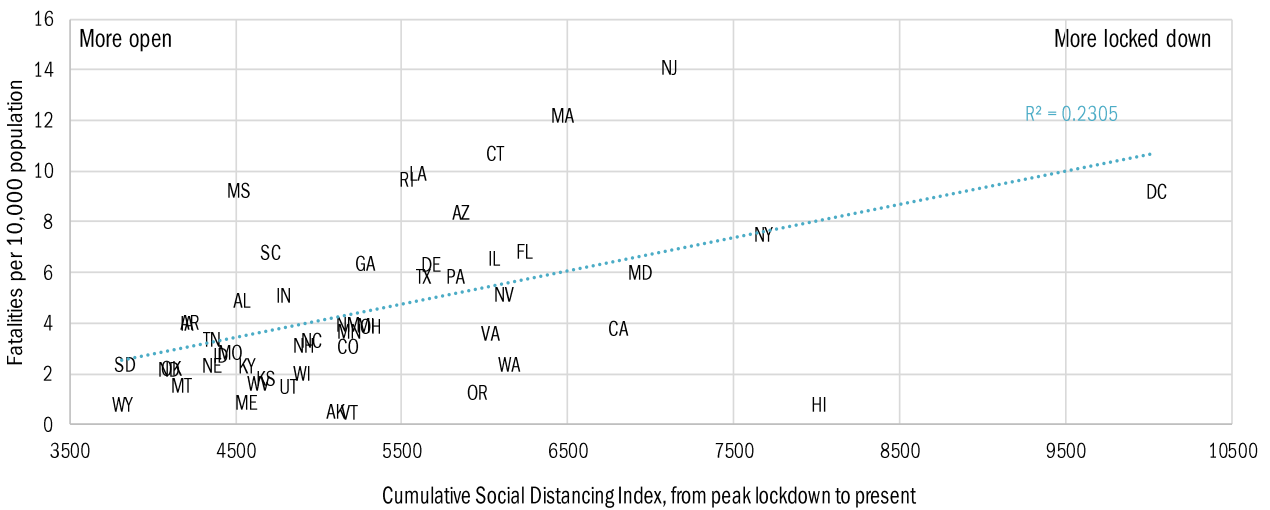
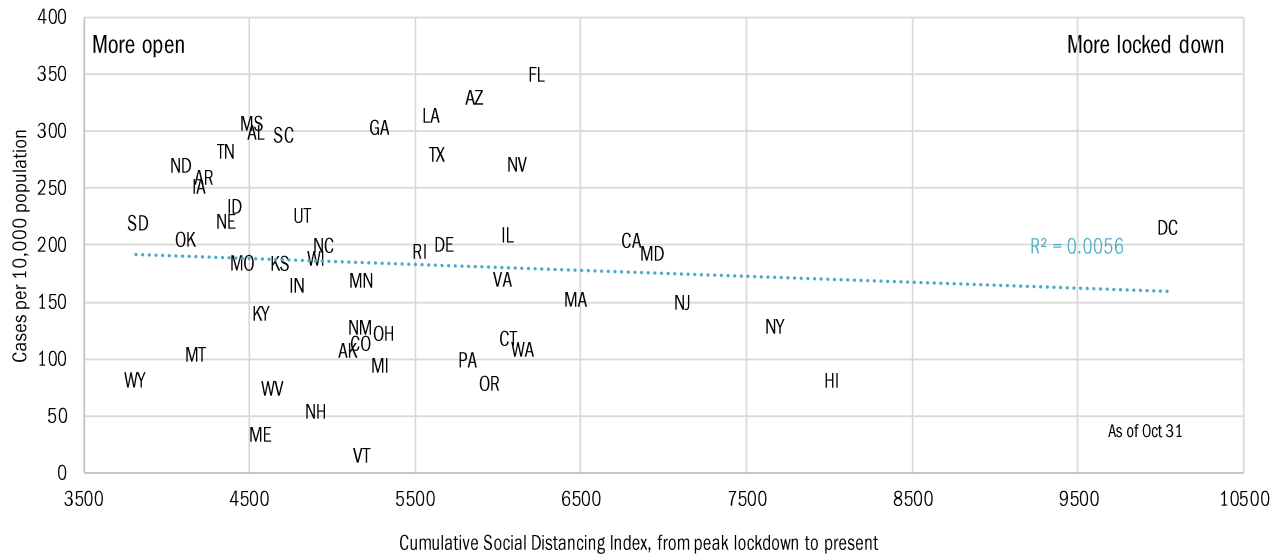
## State by state unemployment insurance claims (thousands)



Source: Department of Labor, TrendMacro calculations

# Assessing the costs of a "second wave" after opening up the US economy

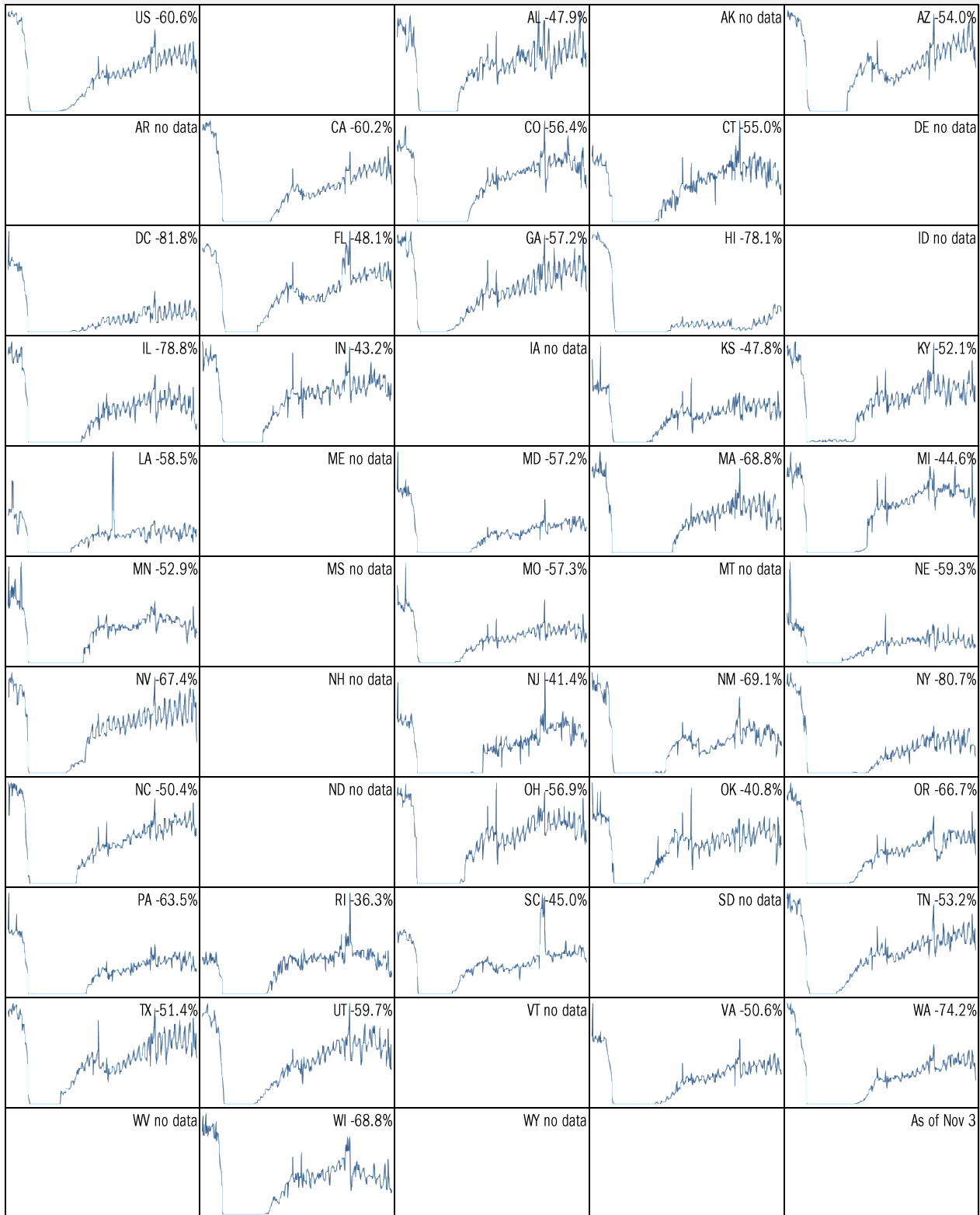
## Covid-2019 fatalities and cases vs social distancing measured by cell-phone data



Source: [University of Maryland COVID-19 Impact Analysis Platform](#), TrendMacro calculations

# Make America eat again:

YOY change in seated diners in restaurants Feb 18 to present ■ Positive



Source: [Open Table](#), TrendMacro calculations

Make America move again: Mobility from Feb 5 vs Jan 3 – Feb 6 baseline ■ Positive

	<i>Retail/rec</i>	<i>Grocery/pharm</i>	<i>Parks</i>	<i>Transit stations</i>	<i>Workplaces</i>	<i>Time at home</i>
<b>US -75</b>		74	-46	-124	-59	58
<b>AL -13</b>		-4	8	-9	-21	4
<b>AK -9</b>		-4	9	-25	-19	8
<b>AZ -17</b>		-11	-15	-20	-28	8
<b>AR -8</b>		-3	29	-4	-19	5
<b>CA -25</b>		-10	-13	-39	-32	10
<b>CO -23</b>		-8	-10	-35	-31	11
<b>CT -15</b>		-8	24	-27	-24	9
<b>DE -12</b>		-5	4	-34	-25	8
<b>DC -49</b>		-21	-41	-65	-48	15
<b>FL -20</b>		-12	-22	-35	-26	6
<b>GA -12</b>		-5	25	-29	-26	6
<b>HI -36</b>		-22	-47	-58	-33	11
<b>ID -4</b>		3	53	-2	-20	5
<b>IL -18</b>		-3	11	-34	-26	9

Source: [Google Mobility Reports](#), TrendMacro calculations

Make America move again: Mobility from Feb 5 vs Jan 3 – Feb 6 baseline ■ Positive

	<i>Retail/rec</i>	<i>Grocery/pharm</i>	<i>Parks</i>	<i>Transit stations</i>	<i>Workplaces</i>	<i>Residential</i>
<b>IN -8</b>			54	-3	-19	5
<b>IA -7</b>		9	39	-10	-16	6
<b>KS -13</b>			17	-7	-20	7
<b>KY -13</b>			39	-4	-22	6
<b>LA -17</b>			-15	-19	-25	5
<b>ME -7</b>		4	56	-2	-16	5
<b>MD -19</b>			36	-39	-31	11
<b>MA -22</b>			12	-50	-31	11
<b>MI -14</b>			56	-24	-23	7
<b>MN -15</b>			5	-40	-25	10
<b>MS -13</b>			4	5	-21	4
<b>MO -10</b>			18	-15	-20	6
<b>MT -14</b>			12	-3	-19	7
<b>NE -13</b>			14	-7	-19	7
<b>NV -14</b>			-15	-28	-29	8

Source: [Google Mobility Reports](#), TrendMacro calculations



Make America move again: Mobility from Feb 5 vs Jan 3 – Feb 6 baseline ■ Positive

	<i>Retail/rec</i>	<i>Grocery/pharm</i>	<i>Parks</i>	<i>Transit stations</i>	<i>Workplaces</i>	<i>Residential</i>
<b>NH -10</b>		-1	43	-15	-19	8
<b>NJ -20</b>		-6	33	-38	-29	11
<b>NM -23</b>		-11	-20	-15	-32	12
<b>NY -25</b>		-8	-1	-42	-29	10
<b>NC -13</b>		-3	39	-23	-24	6
<b>ND -13</b>		-10	-5	-15	-18	7
<b>OH -13</b>		-4	51	-13	-20	6
<b>OK -12</b>		-5	-10	-7	-26	6
<b>OR -15</b>		-5	38	-28	-27	8
<b>PA -15</b>		-6	28	-31	-25	8
<b>RI -17</b>		-8	62	-45	-25	9
<b>SC -9</b>		-3	21	-4	-21	4
<b>SD -10</b>		5	22	-4	-16	7
<b>TN -10</b>		-2	44	-12	-20	5
<b>TX -16</b>		-9	-17	-25	-26	8

Source: [Google Mobility Reports](#), TrendMacro calculations

Make America move again: Mobility from Feb 5 vs Jan 3 – Feb 6 baseline ■ Positive

	<i>Retail/rec</i>	<i>Grocery/pharm</i>	<i>Parks</i>	<i>Transit stations</i>	<i>Workplaces</i>	<i>Residential</i>
<b>UT -11</b>		0	40	-25	-25	7
<b>VT -13</b>		-5	32	-38	-22	8
<b>VA -15</b>		-5	33	-30	-28	9
<b>WA -18</b>		-7	27	-40	-30	9
<b>WV -10</b>		-3	35	2	-18	5
<b>WI -17</b>		-4	45	-19	-21	8
<b>WY -15</b>		-4	11	7	-17	5

Source: [Google Mobility Reports](https://www.google.com/covid19/mobility/), TrendMacro calculations