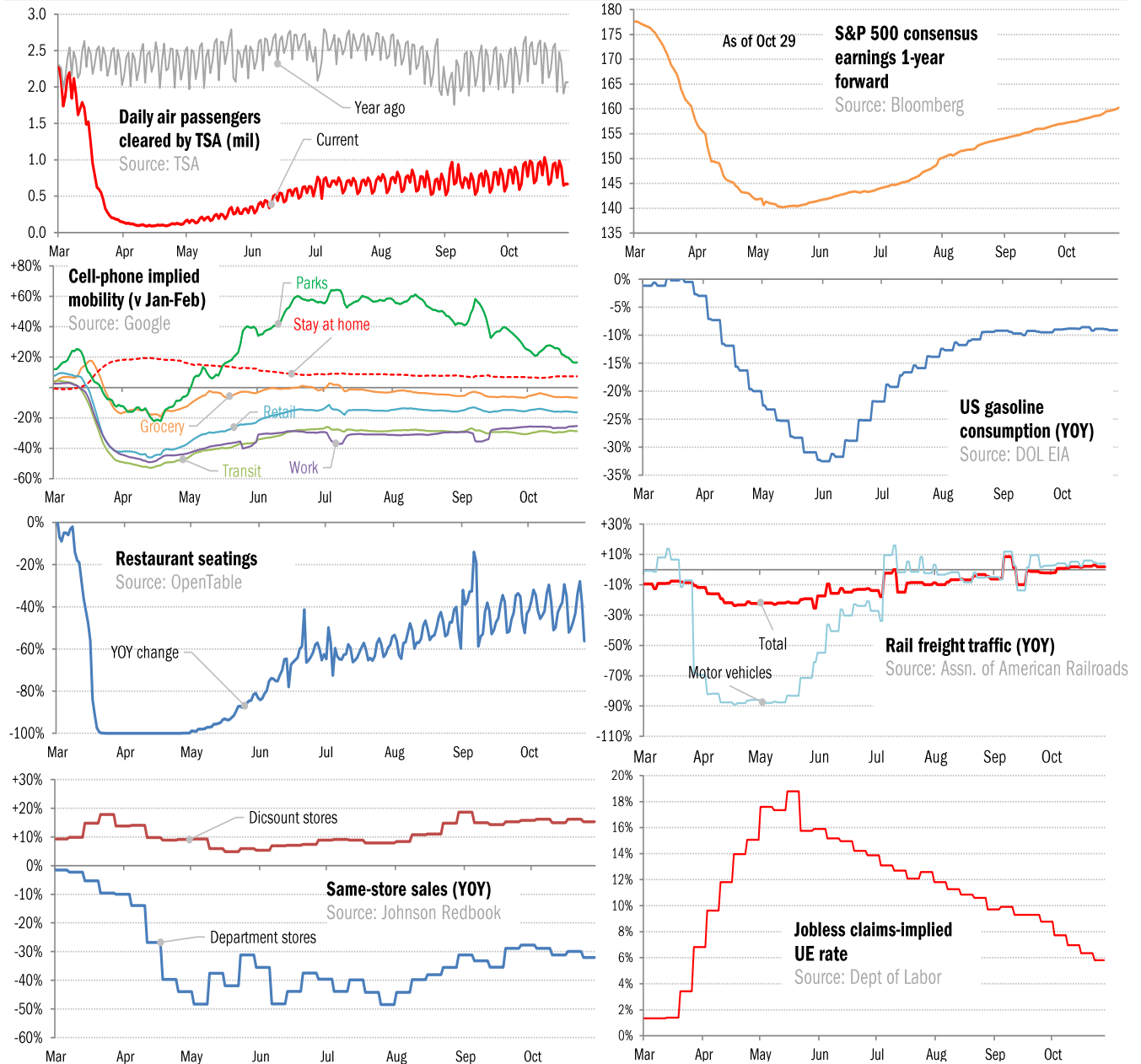


Data Insights: High-Frequency Post-Virus US Recovery Monitor

Thursday, October 29, 2020

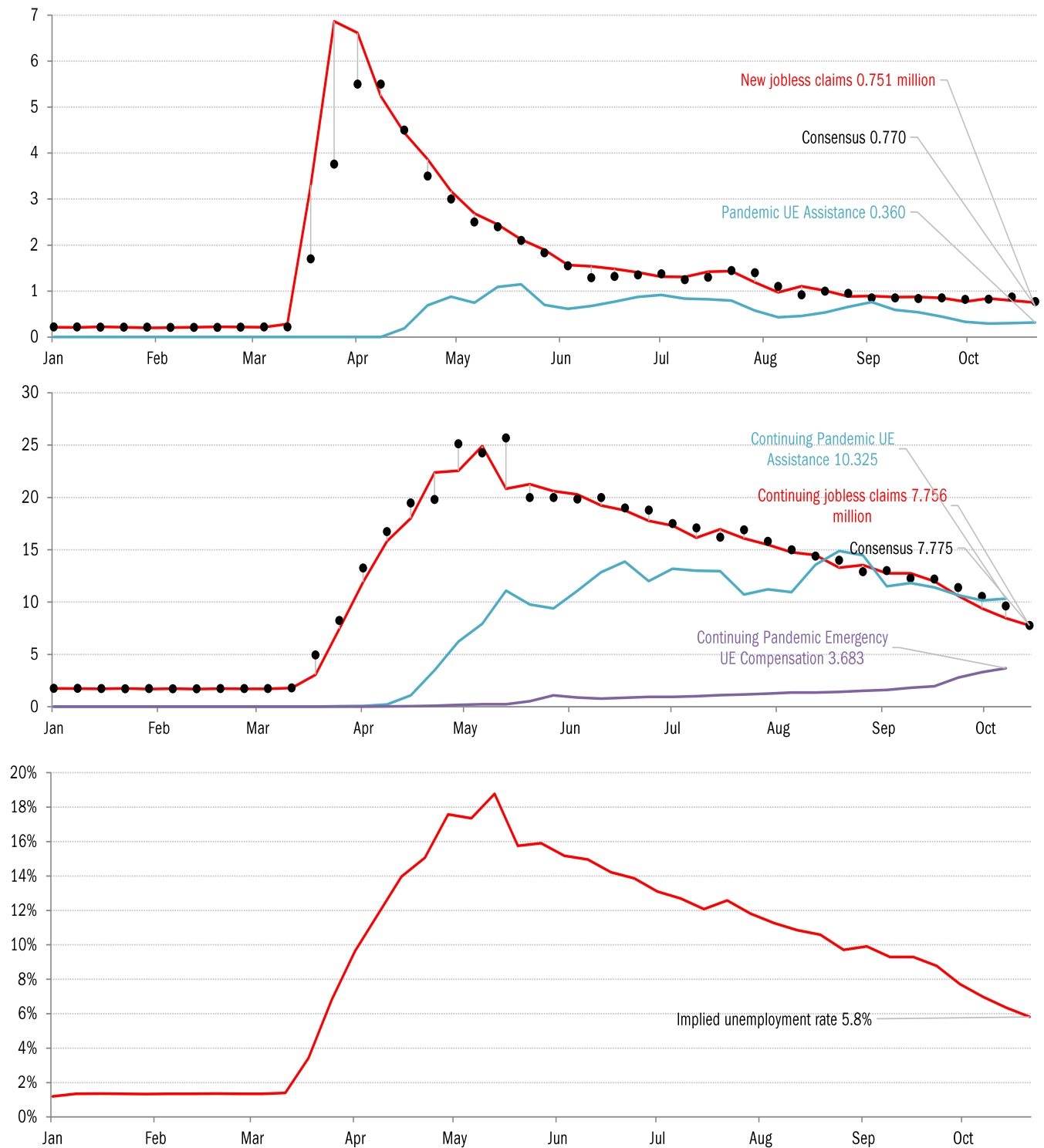
The US high-frequency macro data dashboard

(state level and other detail in subsequent charts)



Source: As indicated, TrendMacro calculations

High-frequency view of the US labor market: weekly unemployment claims (millions)

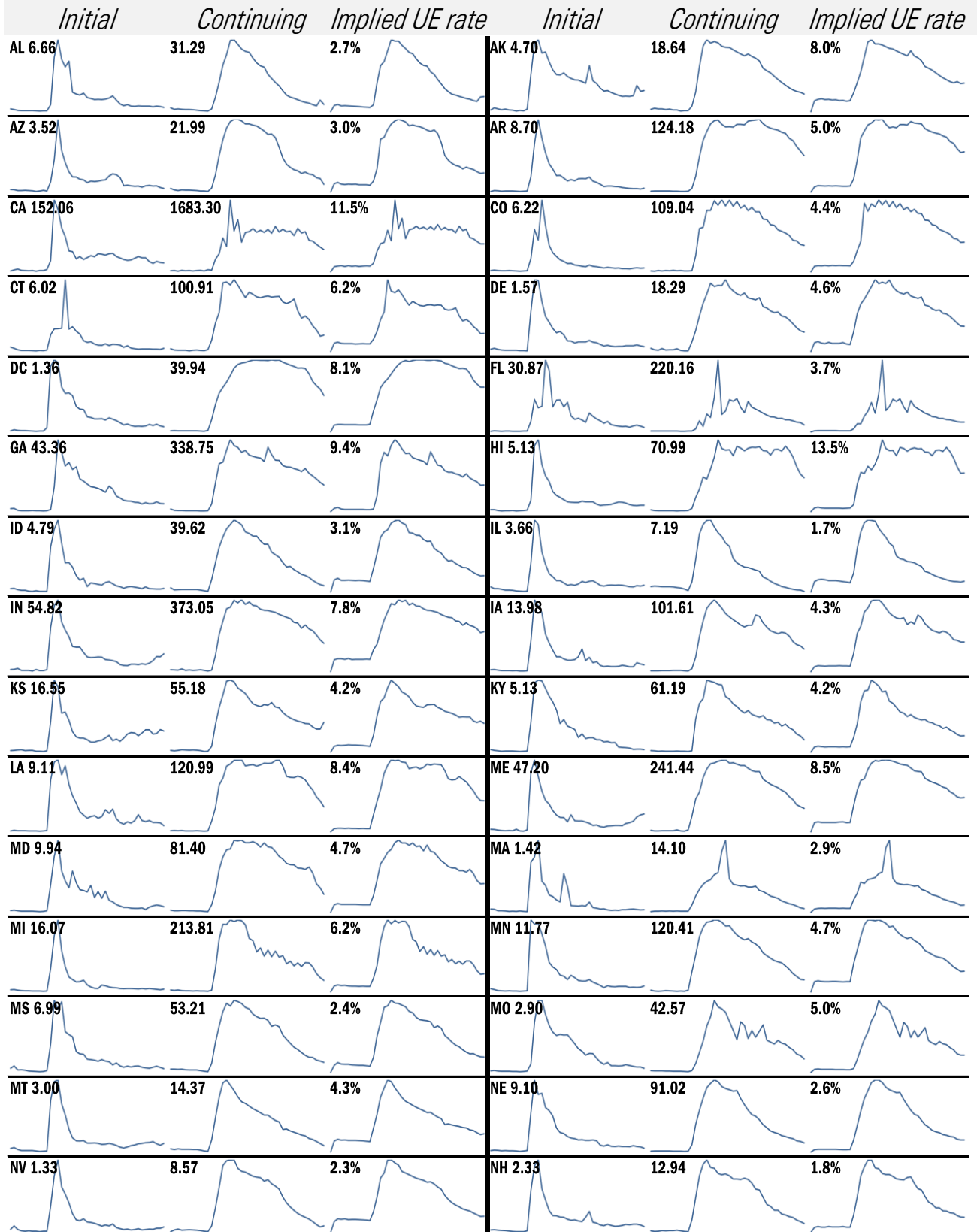


Source: Department of Labor, Bloomberg, TrendMacro calculations

For more information contact us:

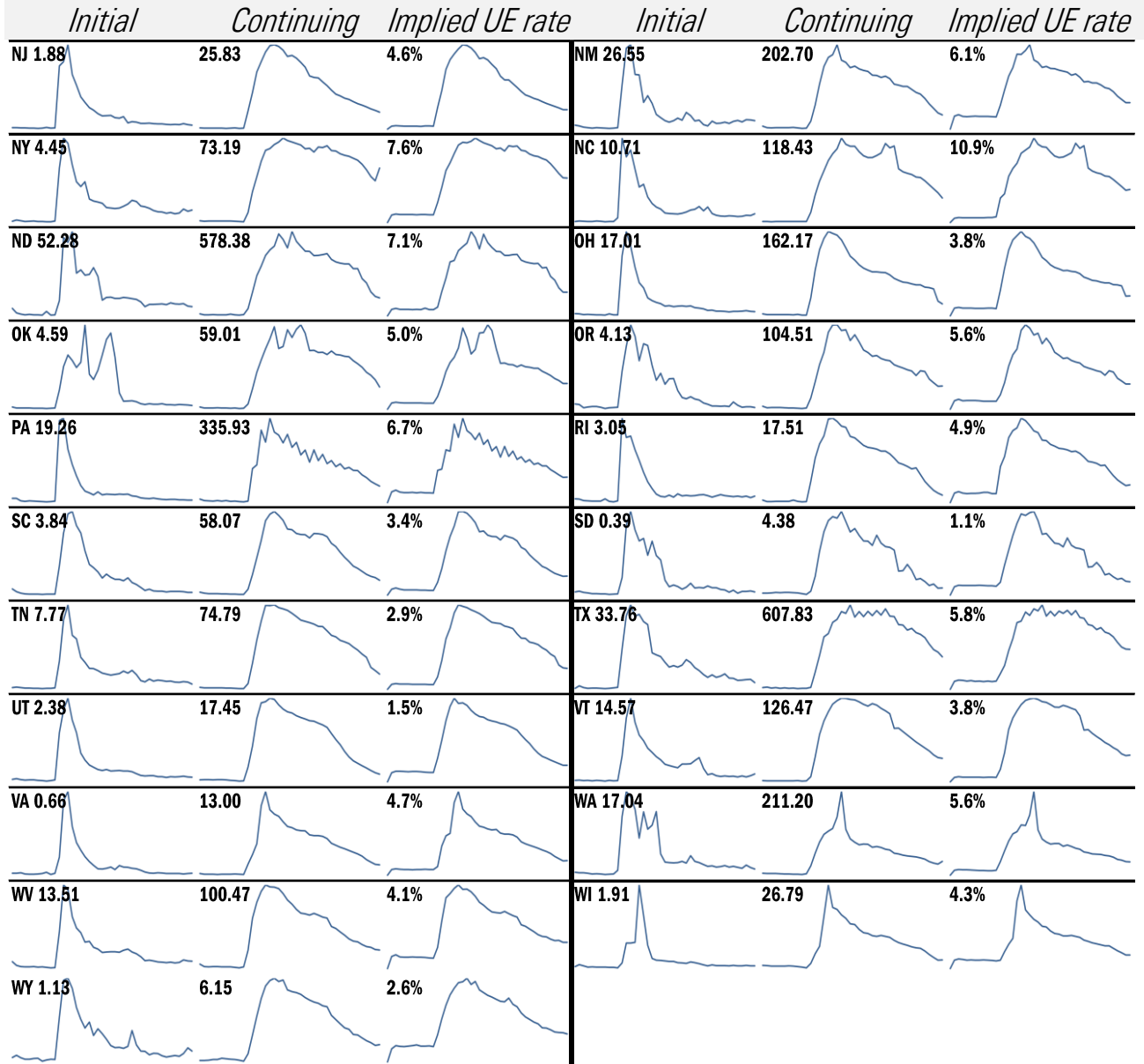
Donald Luskin: 312 273 6766 don@trendmacro.com
 Thomas Demas: 704 552 3625 tdemas@trendmacro.com

State by state unemployment insurance claims (thousands)



Source: Department of Labor, TrendMacro calculations

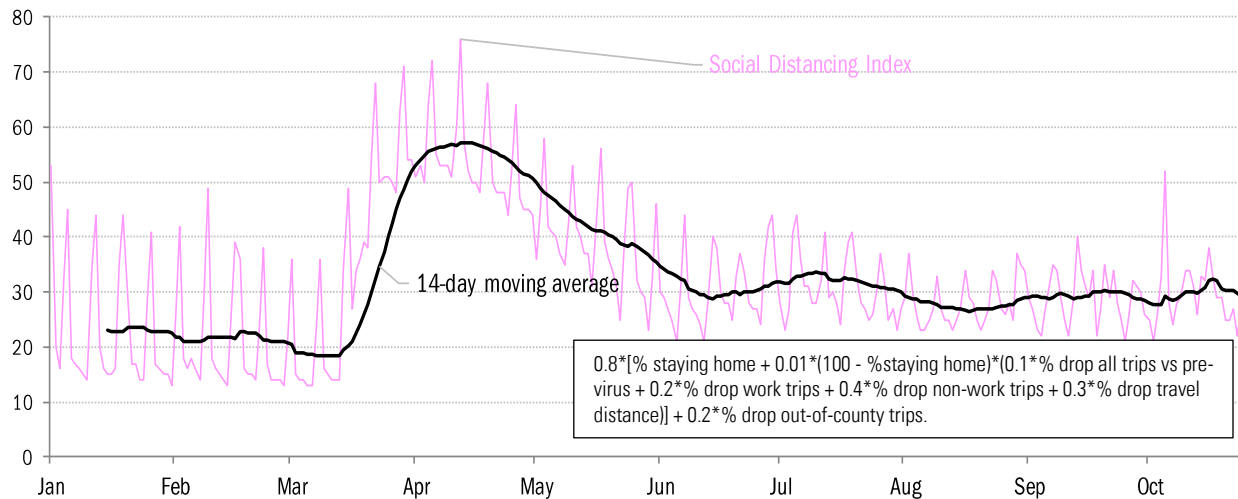
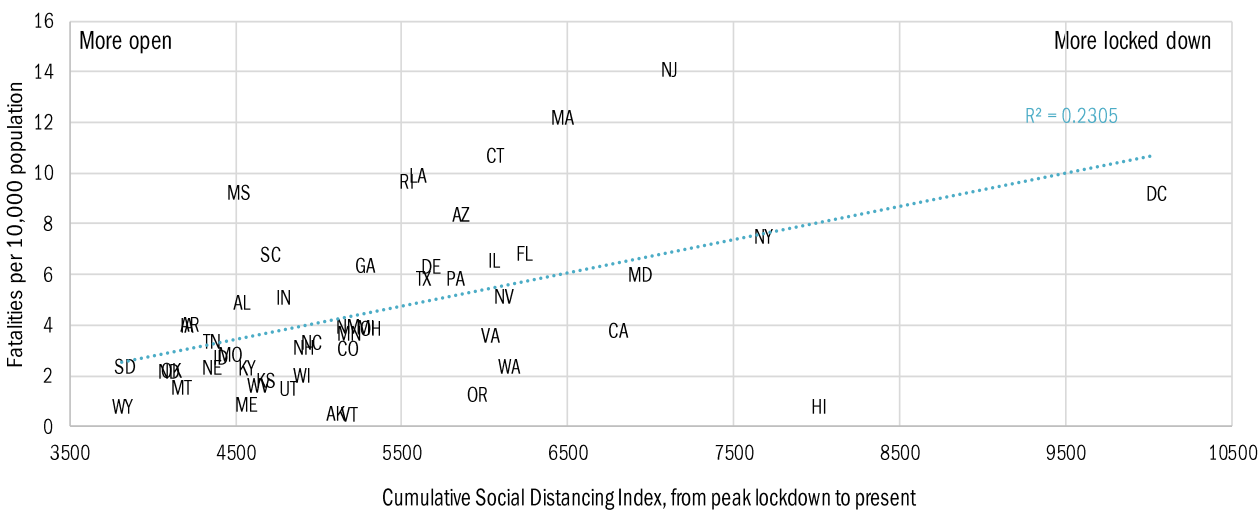
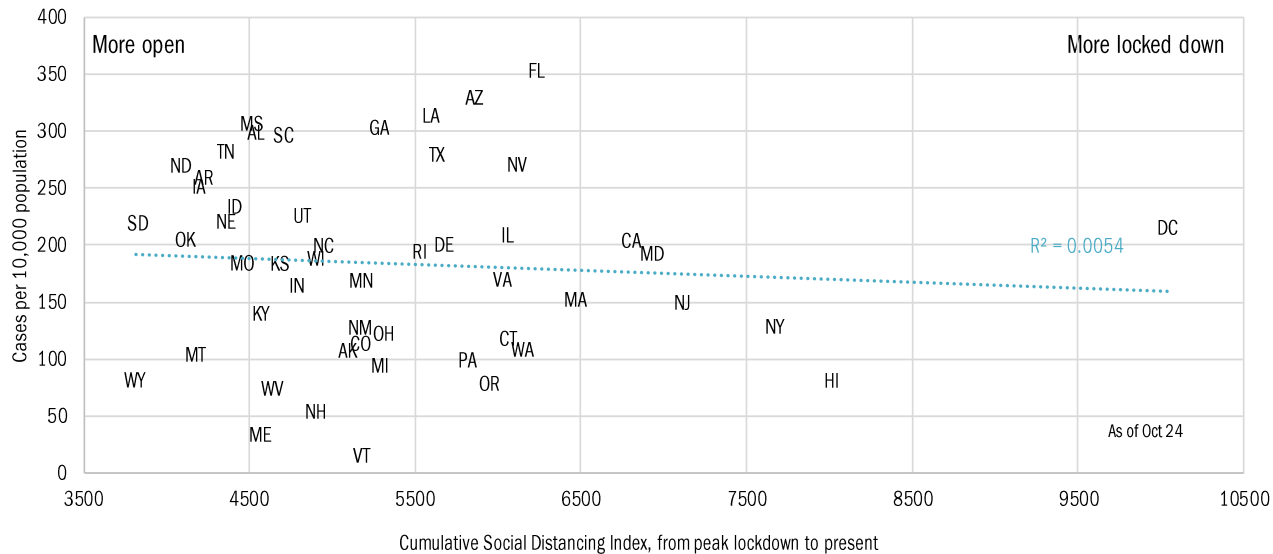
State by state unemployment insurance claims (thousands)



Source: Department of Labor, TrendMacro calculations

Assessing the costs of a "second wave" after opening up the US economy

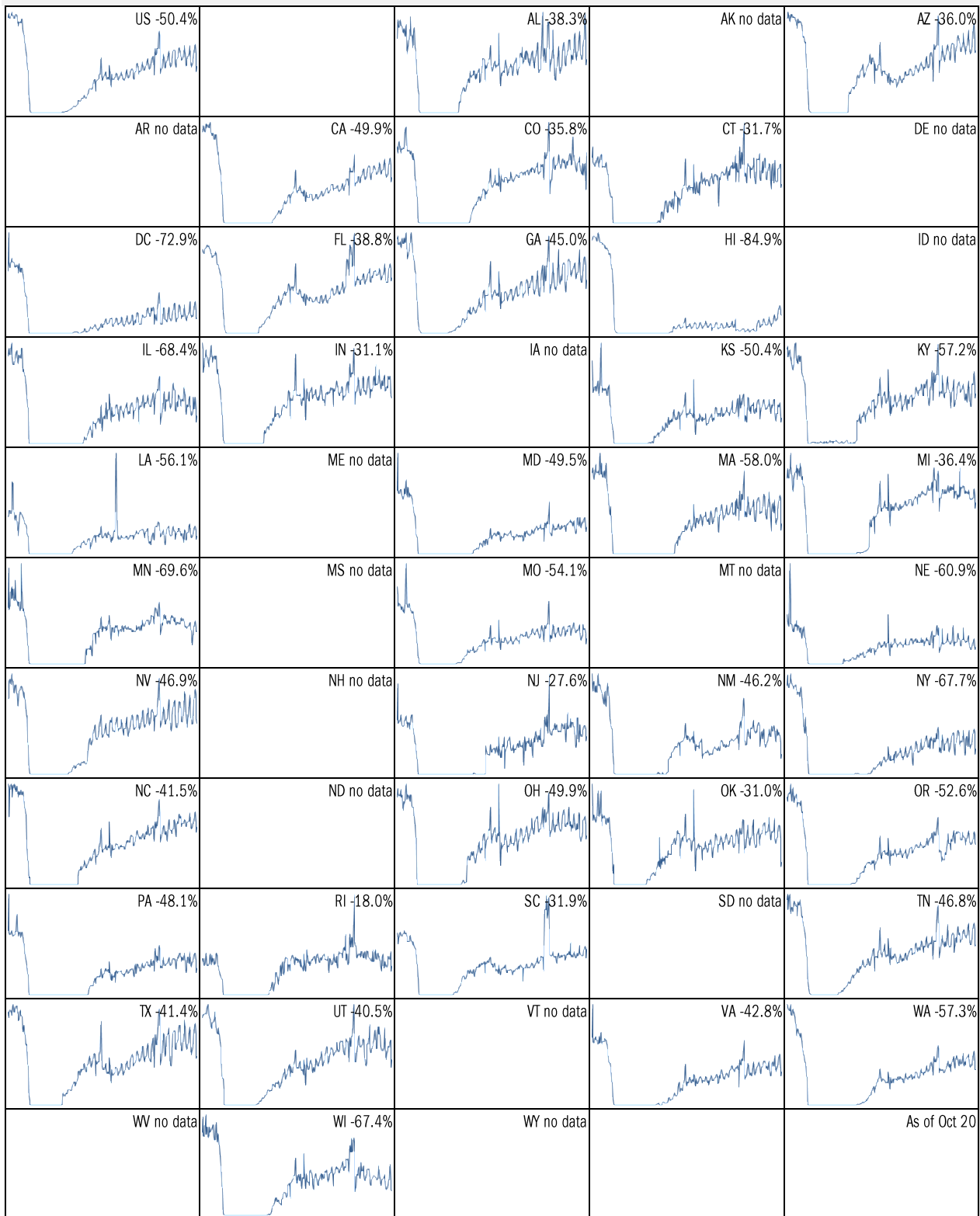
Covid-2019 fatalities and cases vs social distancing measured by cell-phone data



Source: [University of Maryland COVID-19 Impact Analysis Platform](#), TrendMacro calculations

Make America eat again:

YOY change in seated diners in restaurants Feb 18 to present ■ Positive



Source: [Open Table](#), TrendMacro calculations

Make America move again: Mobility from Feb 5 vs Jan 3 – Feb 6 baseline ■ Positive

	<i>Retail/rec</i>	<i>Grocery/pharm</i>	<i>Parks</i>	<i>Transit stations</i>	<i>Workplaces</i>	<i>Time at home</i>
US -16		-7	17	-29	-25	7
AL -12		-3	26	-5	-19	4
AK -7		-4	28	-23	-19	8
AZ -19		-12	-12	-21	-29	8
AR -8		-3	68	-1	-19	4
CA -26		-11	-7	-38	-32	10
CO -17		-5	18	-29	-28	8
CT -12		-7	60	-22	-23	7
DE -9		-2	40	-29	-24	7
DC -47		-19	-28	-63	-46	15
FL -21		-14	-26	-36	-26	7
GA -13		-6	42	-27	-24	6
HI -38		-25	-49	-59	-34	13
ID -3		4	87	4	-20	4
IL -18		-5	16	-33	-26	9

Source: [Google Mobility Reports](https://www.google.com/covid19/mobility/), TrendMacro calculations

Make America move again: Mobility from Feb 5 vs Jan 3 – Feb 6 baseline ■ Positive

	<i>Retail/rec</i>	<i>Grocery/pharm</i>	<i>Parks</i>	<i>Transit stations</i>	<i>Workplaces</i>	<i>Residential</i>
IN -9		-4	73	-1	-21	5
IA -6		9	48	-7	-16	5
KS -10		-7	42	-1	-19	5
KY -14		-1	67	-1	-21	5
LA -15		-4	-5	-15	-21	4
ME -6		4	84	3	-16	5
MD -17		-8	73	-35	-30	10
MA -18		-9	47	-46	-30	10
MI -13		-6	66	-22	-23	7
MN -18		-10	5	-41	-27	11
MS -10		-7	19	6	-17	3
MO -9		-1	42	-11	-20	5
MT -10		1	10	2	-18	7
NE -9		-1	35	-1	-19	6
NV -15		-6	-9	-26	-28	8

Source: [Google Mobility Reports](#), TrendMacro calculations

Make America move again: Mobility from Feb 5 vs Jan 3 – Feb 6 baseline ■ Positive

	<i>Retail/rec</i>	<i>Grocery/pharm</i>	<i>Parks</i>	<i>Transit stations</i>	<i>Workplaces</i>	<i>Residential</i>
NH -7		0	87	-11	-19	7
NJ -17		-4	78	-34	-28	9
NM -19		-7	9	-9	-28	9
NY -23		-7	23	-39	-28	9
NC -11		-2	62	-20	-24	5
ND -13		-10	0	-13	-21	8
OH -13		-5	84	-10	-21	6
OK -10		-3	21	-1	-19	5
OR -15		-5	47	-26	-27	8
PA -13		-4	72	-27	-24	7
RI -13		-7	121	-43	-24	7
SC -8		-3	33	-1	-20	4
SD -5		9	48	5	-15	6
TN -8		-2	72	-7	-20	4
TX -16		-9	-1	-23	-26	8

Source: [Google Mobility Reports](https://www.google.com/covid19/mobility/), TrendMacro calculations

Make America move again: Mobility from Feb 5 vs Jan 3 – Feb 6 baseline ■ Positive

	<i>Retail/rec</i>	<i>Grocery/pharm</i>	<i>Parks</i>	<i>Transit stations</i>	<i>Workplaces</i>	<i>Residential</i>
UT -11						
		1	84	-20	-27	6
VT -11						
		-3	69	-32	-21	7
VA -13						
		-3	67	-27	-28	8
WA -19						
		-8	26	-39	-31	9
WV -9						
		-1	68	3	-17	4
WI -18						
		-4	48	-19	-21	9
WY -9						
		2	52	17	-16	4

Source: [Google Mobility Reports](https://www.google.com/covid19/mobility/), TrendMacro calculations