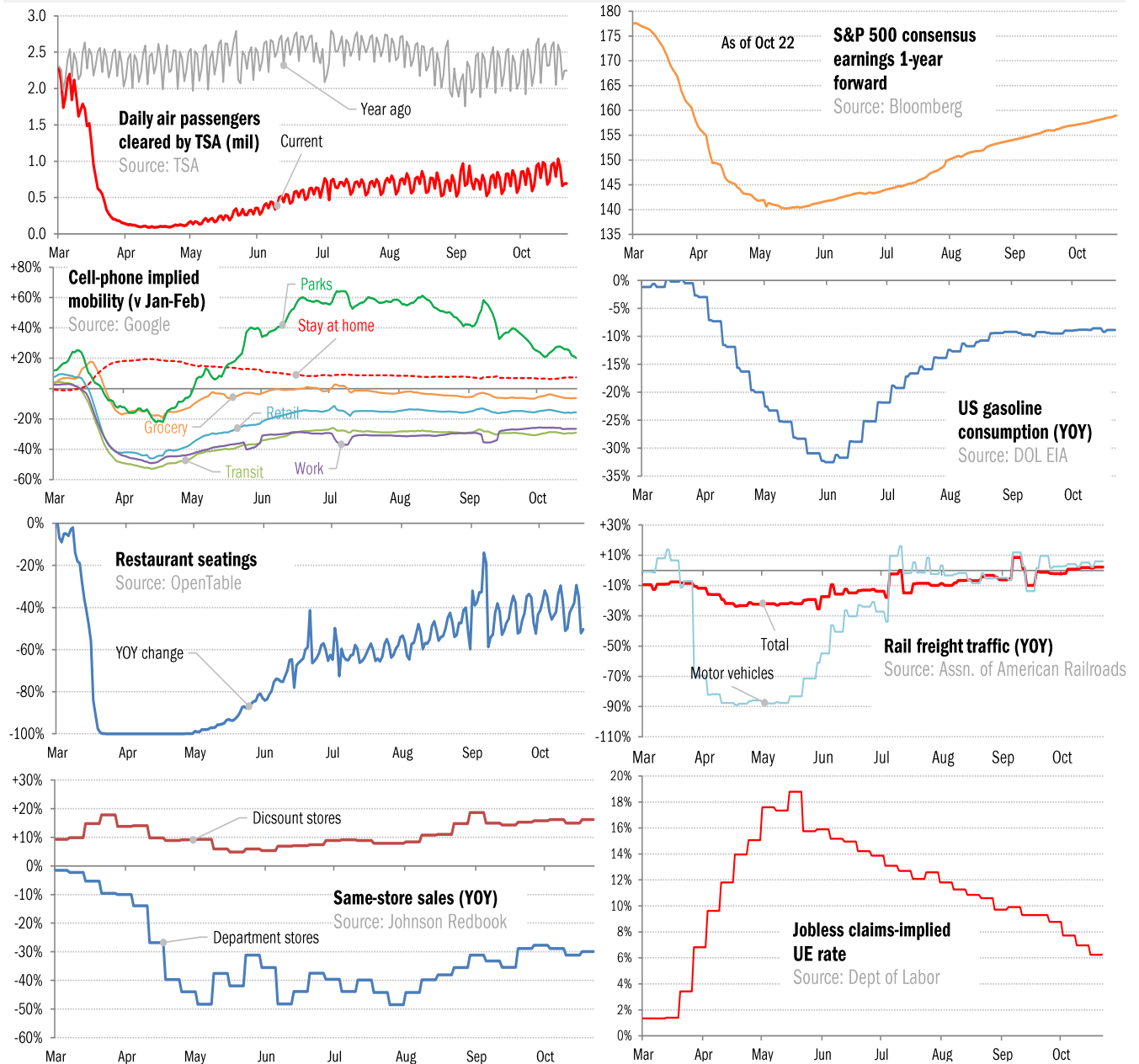


Data Insights: High-Frequency Post-Virus US Recovery Monitor

Thursday, October 22, 2020

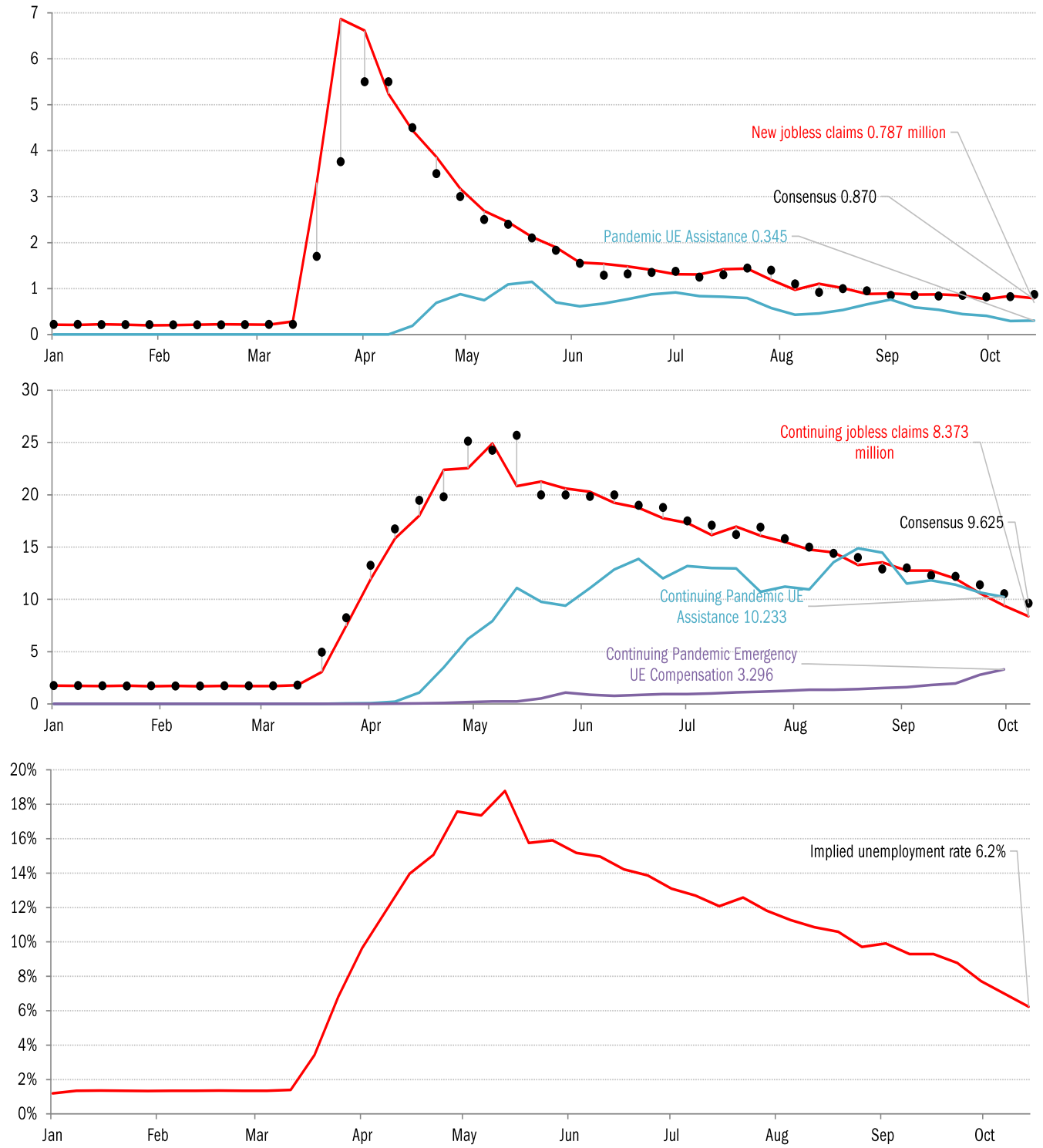
The US high-frequency macro data dashboard

(state level and other detail in subsequent charts)



Source: As indicated, TrendMacro calculations

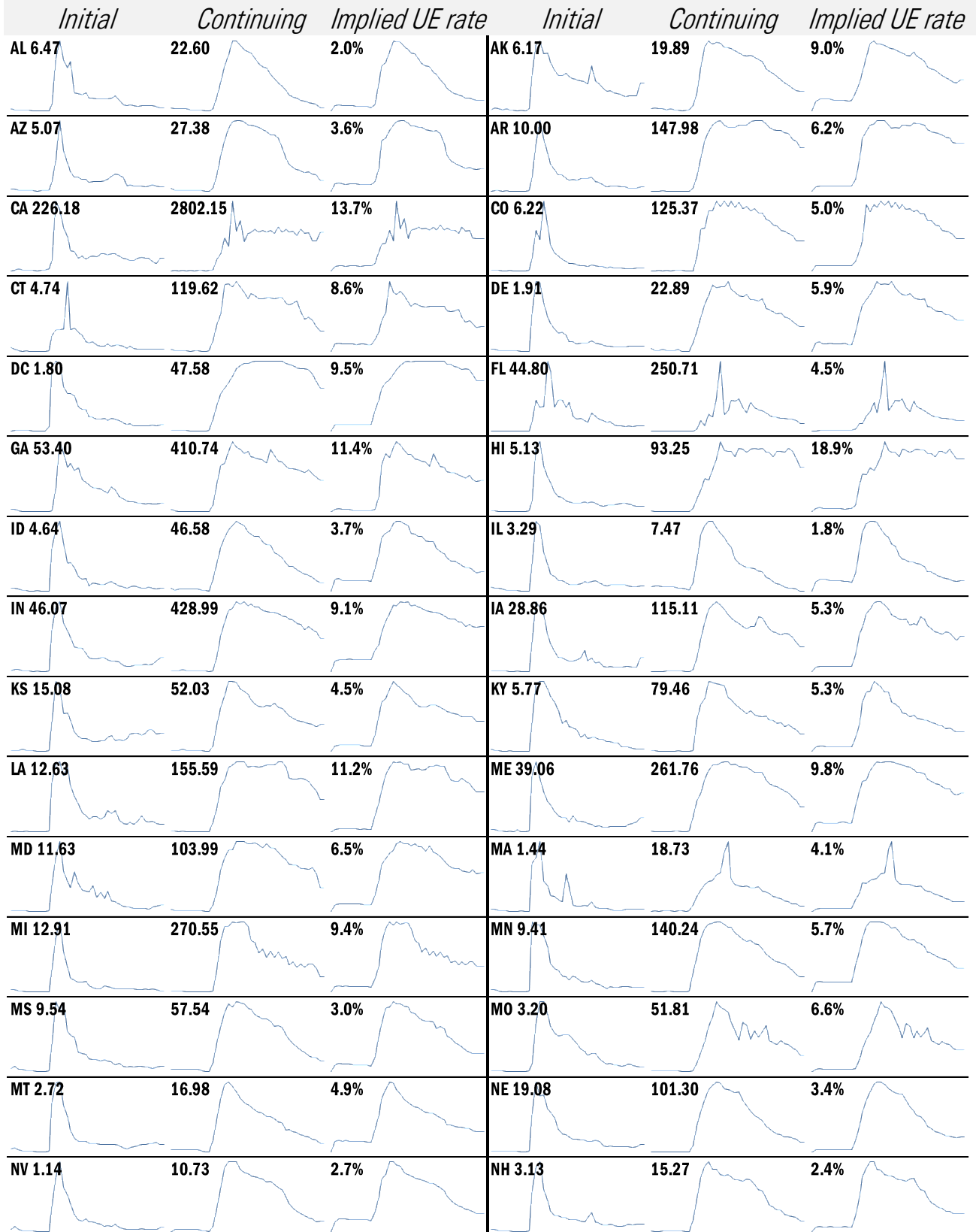
High-frequency view of the US labor market: weekly unemployment claims (millions)



Source: Department of Labor, Bloomberg, TrendMacro calculations

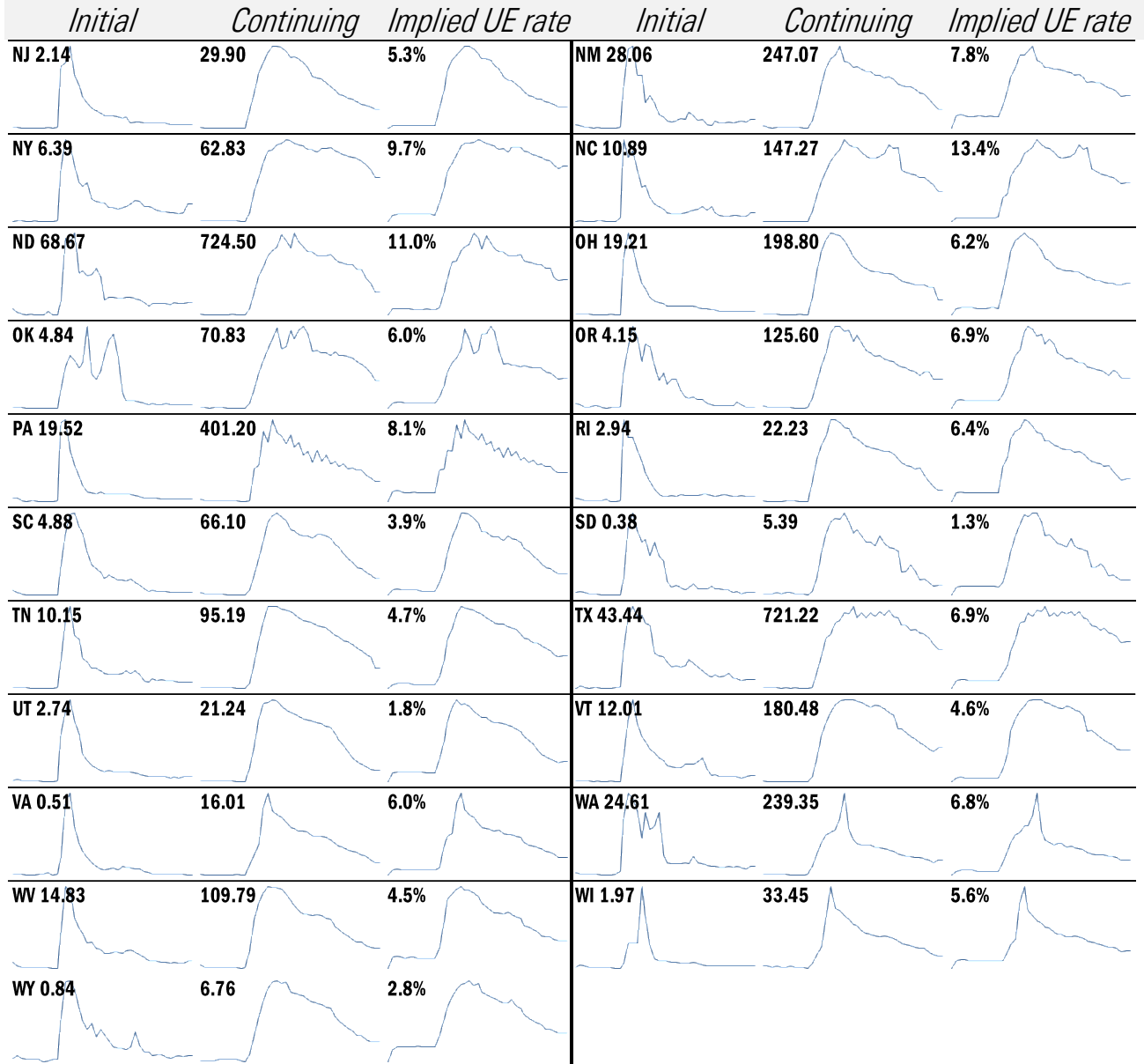
For more information contact us:
 Donald Luskin: 312 273 6766 don@trendmacro.com
 Thomas Demas: 704 552 3625 tdemas@trendmacro.com

State by state unemployment insurance claims (thousands)



Source: Department of Labor, TrendMacro calculations

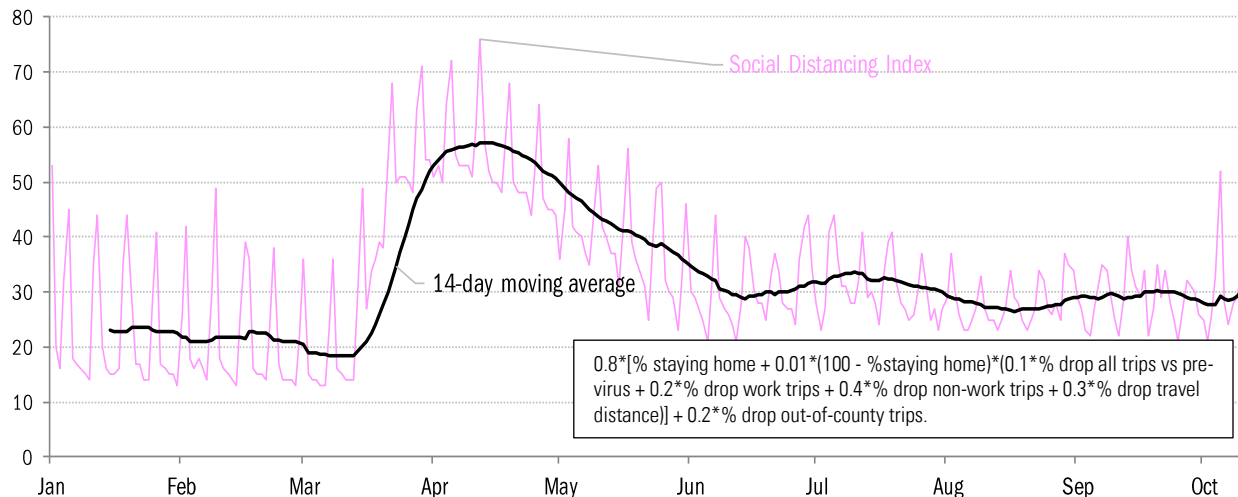
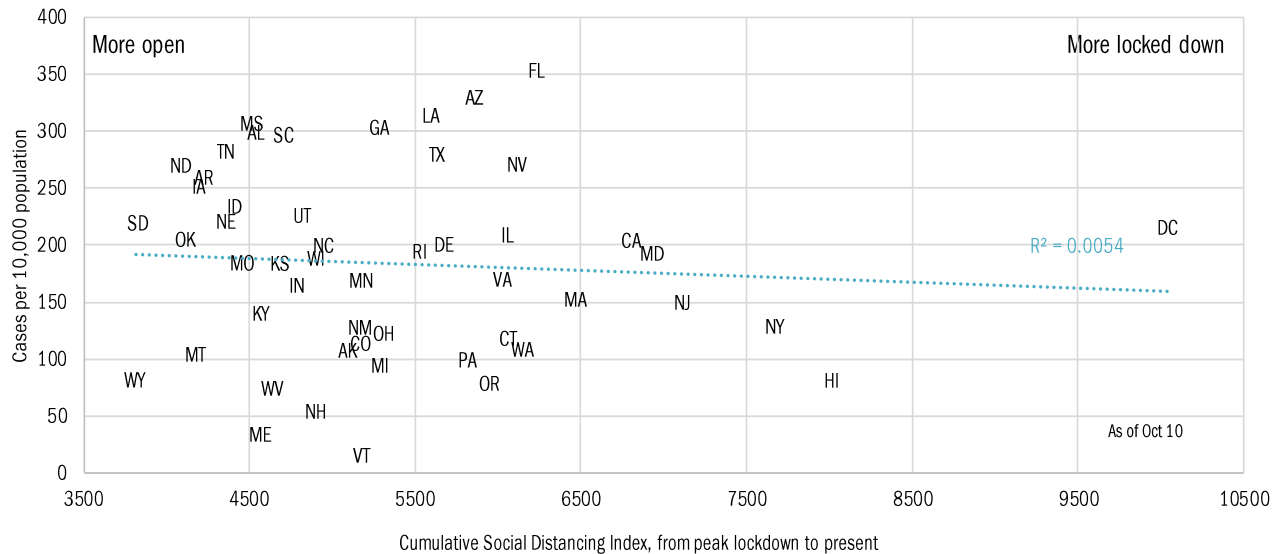
State by state unemployment insurance claims (thousands)



Source: Department of Labor, TrendMacro calculations

Assessing the costs of a "second wave" after opening up the US economy

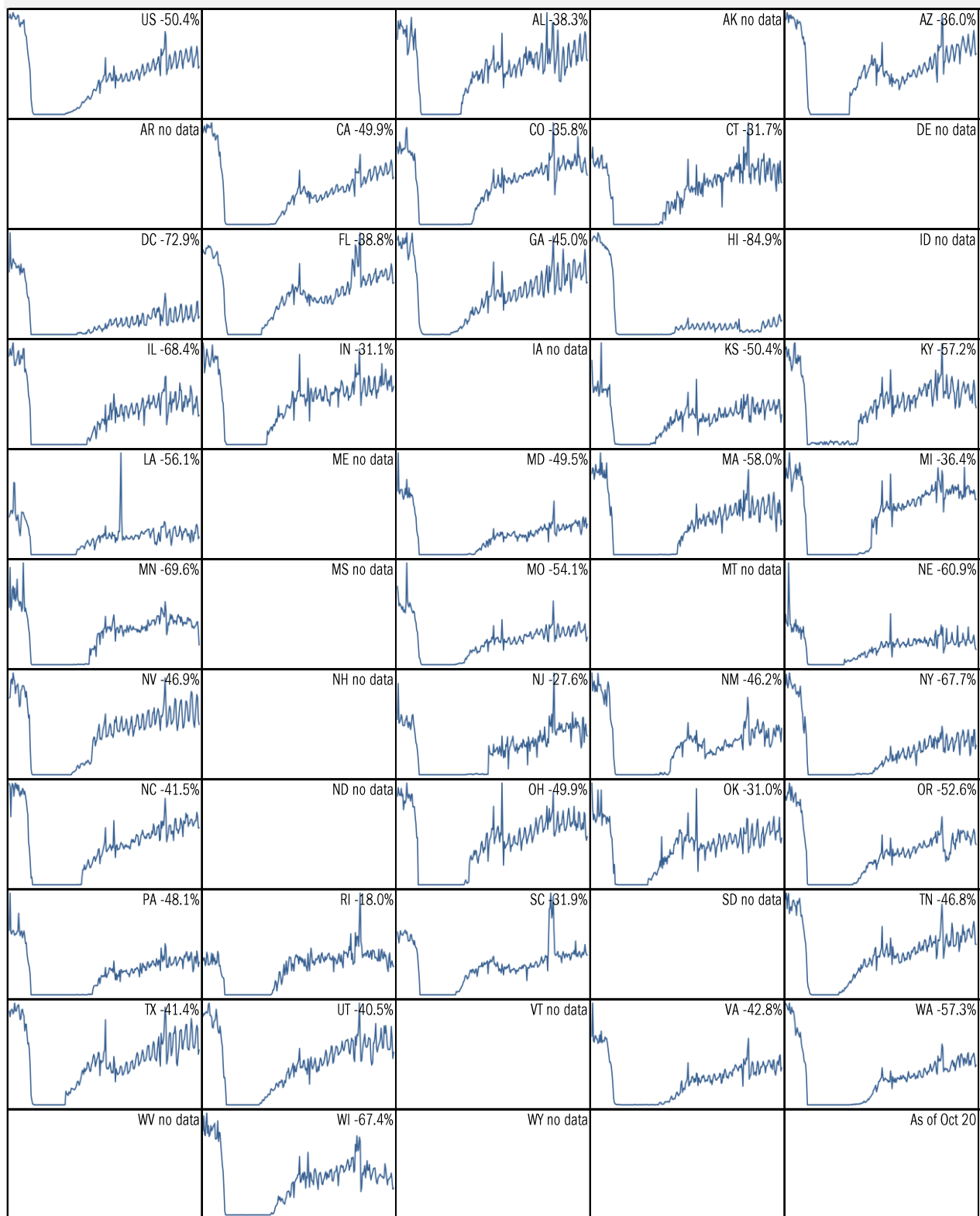
Covid-2019 fatalities and cases vs social distancing measured by cell-phone data



Source: [University of Maryland COVID-19 Impact Analysis Platform](#), TrendMacro calculations

Make America eat again:

YOY change in seated diners in restaurants Feb 18 to present ■ Positive



Source: [Open Table](#), TrendMacro calculations

Make America move again: Mobility from Feb 5 vs Jan 3 – Feb 6 baseline ■ Positive

	<i>Retail/rec</i>	<i>Grocery/pharm</i>	<i>Parks</i>	<i>Transit stations</i>	<i>Workplaces</i>	<i>Time at home</i>
US -16		-6	20	-29	-27	7
AL -11		-3	27	-4	-21	4
AK -6		-3	36	-21	-19	7
AZ -19		-12	-10	-21	-31	8
AR -7		-1	74	0	-19	4
CA -26		-11	-5	-38	-32	10
CO -15		-4	36	-27	-29	8
CT -13		-8	44	-23	-26	8
DE -10		-4	26	-28	-25	8
DC -48		-21	-34	-65	-48	16
FL -22		-14	-21	-36	-27	7
GA -12		-6	43	-27	-26	6
HI -40		-26	-50	-61	-35	13
ID -2		5	103	5	-21	3
IL -16		-4	33	-32	-27	8

Source: [Google Mobility Reports](https://www.google.com/covid19/mobility/), TrendMacro calculations

Make America move again: Mobility from Feb 5 vs Jan 3 – Feb 6 baseline ■ Positive

	<i>Retail/rec</i>	<i>Grocery/pharm</i>	<i>Parks</i>	<i>Transit stations</i>	<i>Workplaces</i>	<i>Residential</i>
IN -7						
		-3	86	0	-22	5
IA -4						
		11	92	-4	-17	4
KS -9						
		-6	74	1	-20	5
KY -11						
		0	77	1	-22	5
LA -14						
		-4	-2	-14	-23	4
ME -4						
		6	99	9	-19	6
MD -17						
		-8	56	-36	-32	11
MA -19						
		-10	34	-48	-33	11
MI -12						
		-4	87	-20	-23	7
MN -13						
		-6	47	-38	-28	9
MS -9						
		-6	20	8	-19	3
MO -6						
		0	67	-10	-21	5
MT -7						
		3	30	7	-21	6
NE -7						
		0	70	1	-20	5
NV -15						
		-7	-8	-26	-29	8

Source: [Google Mobility Reports](https://www.google.com/covid19/mobility/), TrendMacro calculations

Make America move again: Mobility from Feb 5 vs Jan 3 – Feb 6 baseline ■ Positive

	<i>Retail/rec</i>	<i>Grocery/pharm</i>	<i>Parks</i>	<i>Transit stations</i>	<i>Workplaces</i>	<i>Residential</i>
NH -5						
		1	97	-8	-22	8
NJ -19						
		-6	57	-37	-30	10
NM -18						
		-7	13	-8	-29	8
NY -25						
		-8	14	-41	-31	10
NC -12						
		-2	56	-20	-25	6
ND -10						
		-8	23	-9	-18	6
OH -11						
		-3	101	-8	-21	5
OK -9						
		-1	37	1	-23	5
OR -15						
		-5	50	-25	-27	7
PA -13						
		-4	65	-28	-26	7
RI -14						
		-8	94	-45	-28	9
SC -8						
		-2	34	-1	-21	5
SD -1						
		13	106	13	-17	5
TN -7						
		-2	74	-7	-24	4
TX -15						
		-8	2	-23	-27	8

Source: [Google Mobility Reports](https://www.google.com/covid19/mobility/), TrendMacro calculations

Make America move again: Mobility from Feb 5 vs Jan 3 – Feb 6 baseline ■ Positive

	<i>Retail/rec</i>	<i>Grocery/pharm</i>	<i>Parks</i>	<i>Transit stations</i>	<i>Workplaces</i>	<i>Residential</i>
UT -10						
		2	94	-19	-29	6
VT -7						
		0	88	-29	-23	8
VA -14						
		-4	54	-28	-29	9
WA -18						
		-7	31	-38	-31	9
WV -9						
		0	67	4	-19	4
WI -16						
		-1	77	-16	-21	8
WY -7						
		5	81	21	-17	4

Source: [Google Mobility Reports](https://www.google.com/covid19/mobility/), TrendMacro calculations