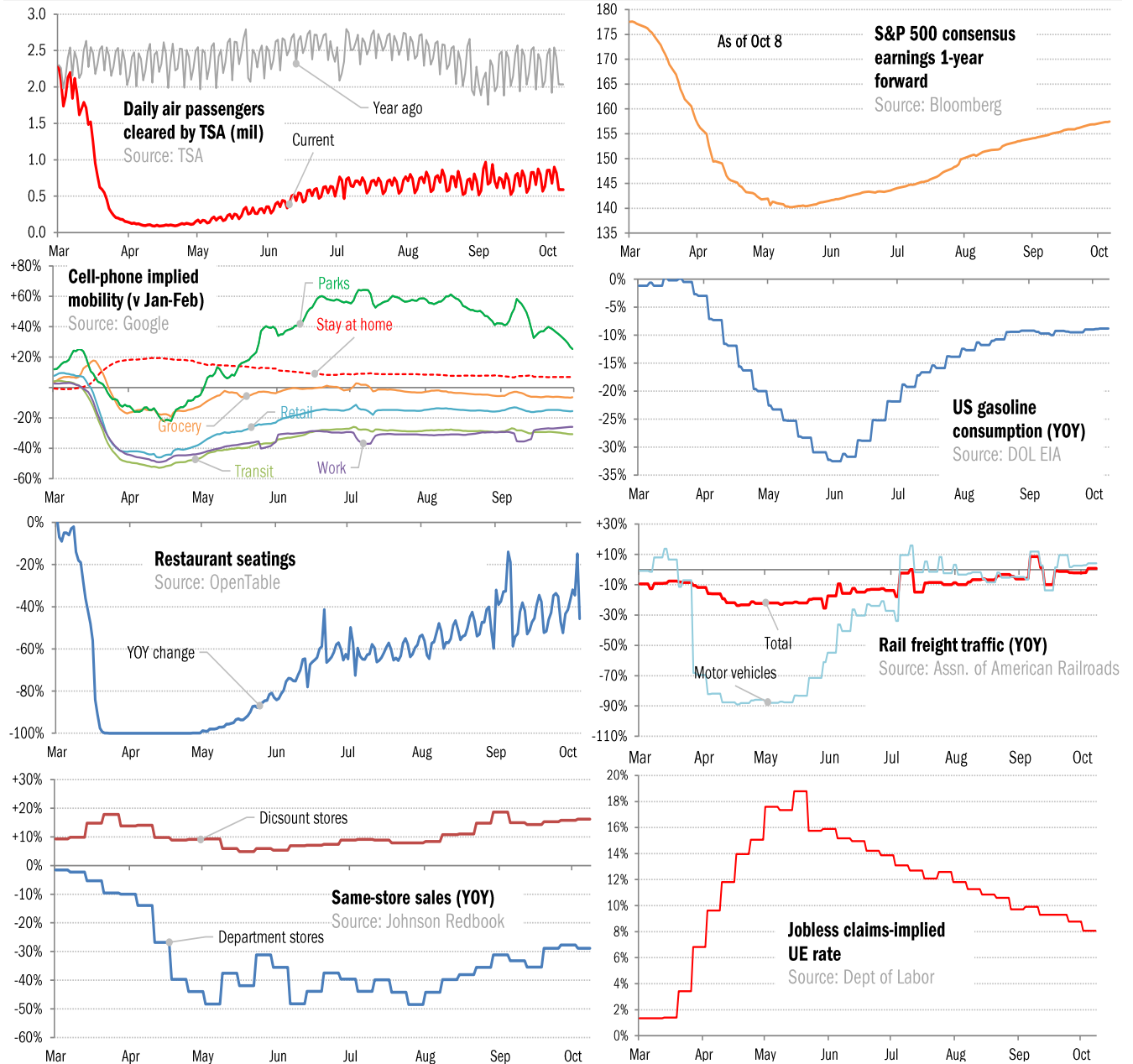


Data Insights: High-Frequency Post-Virus US Recovery Monitor

Thursday, October 8, 2020

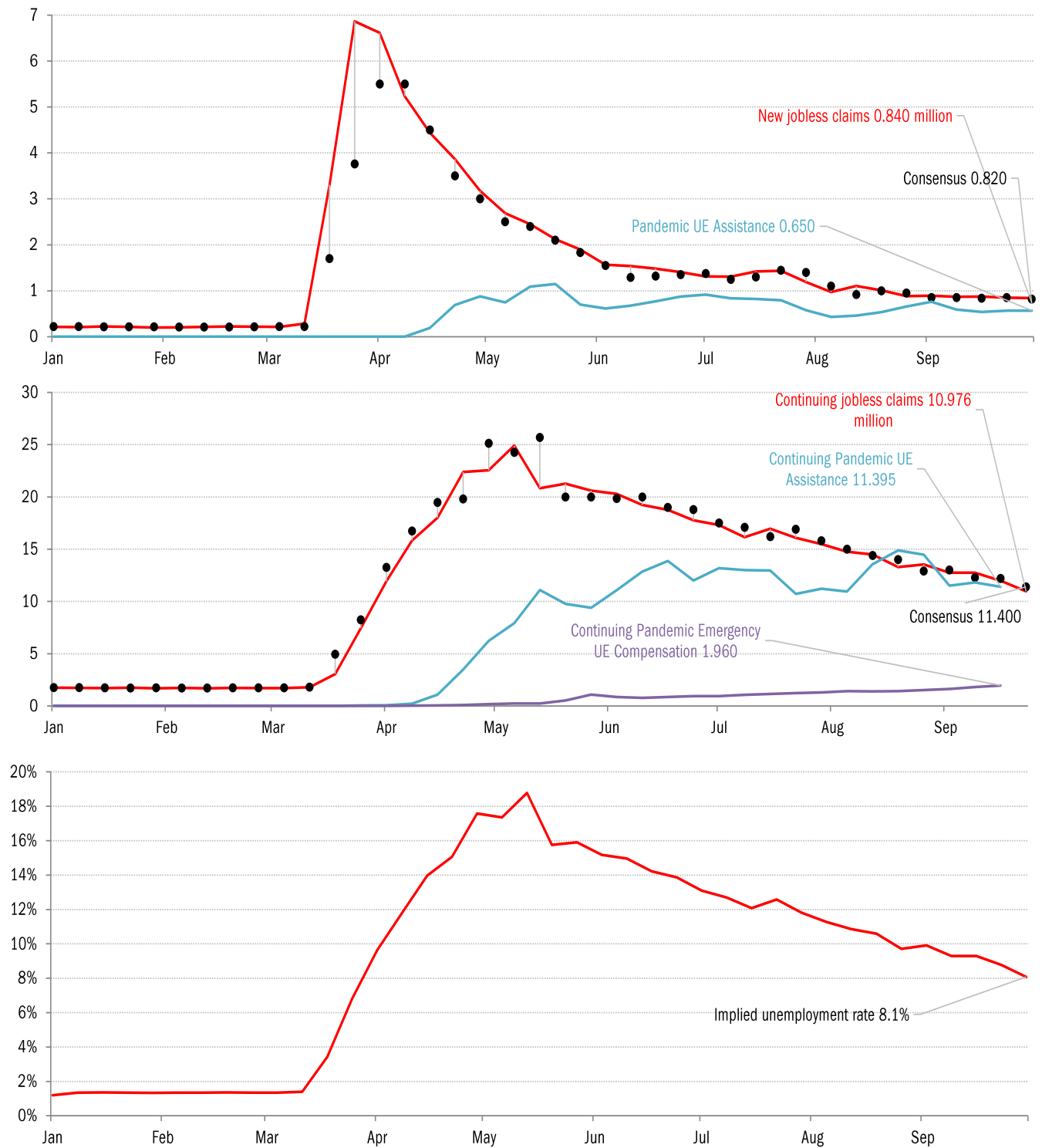
The US high-frequency macro data dashboard

(state level and other detail in subsequent charts)



Source: As indicated, TrendMacro calculations

High-frequency view of the US labor market: weekly unemployment claims (millions)

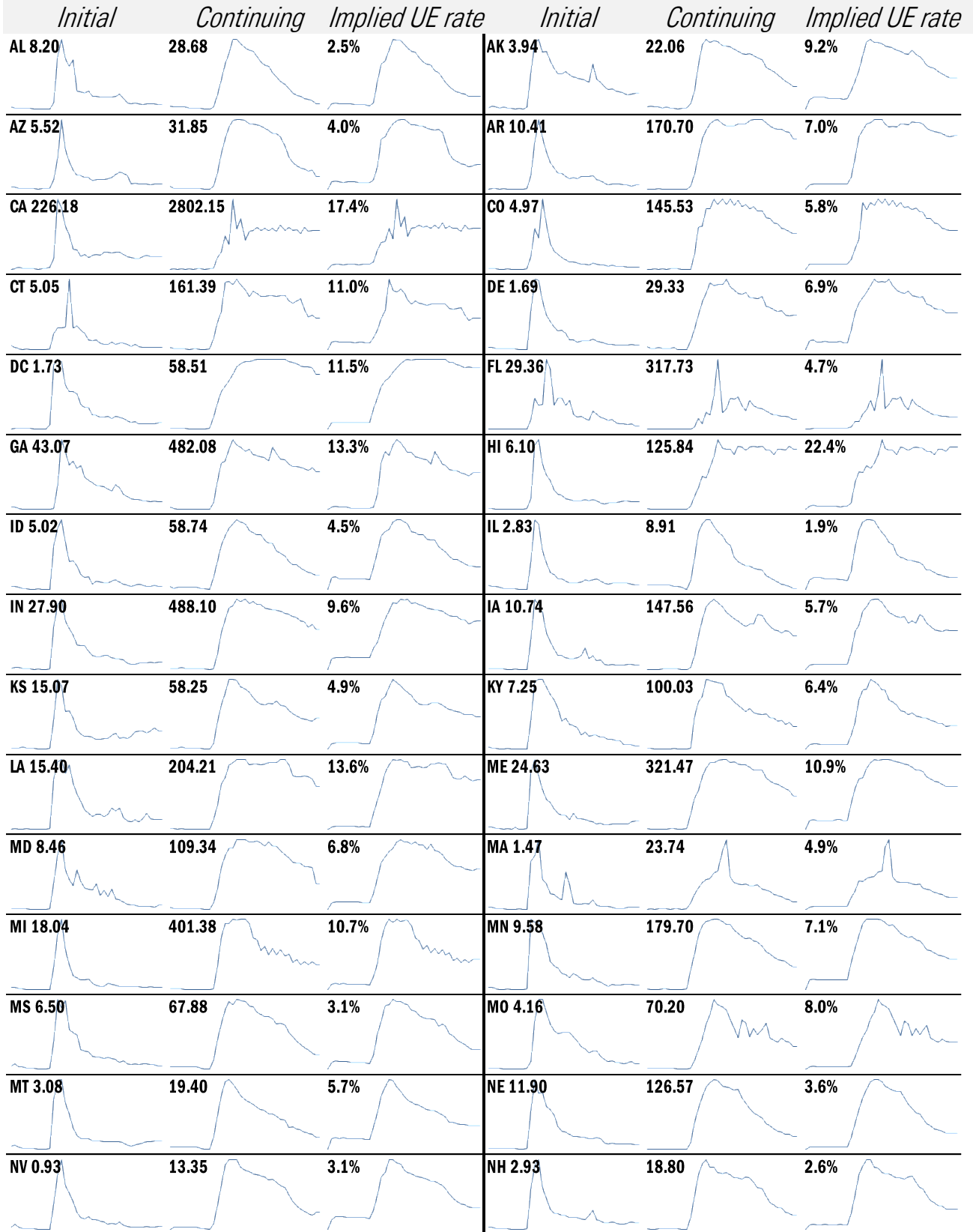


Source: Department of Labor, Bloomberg, TrendMacro calculations

For more information contact us:

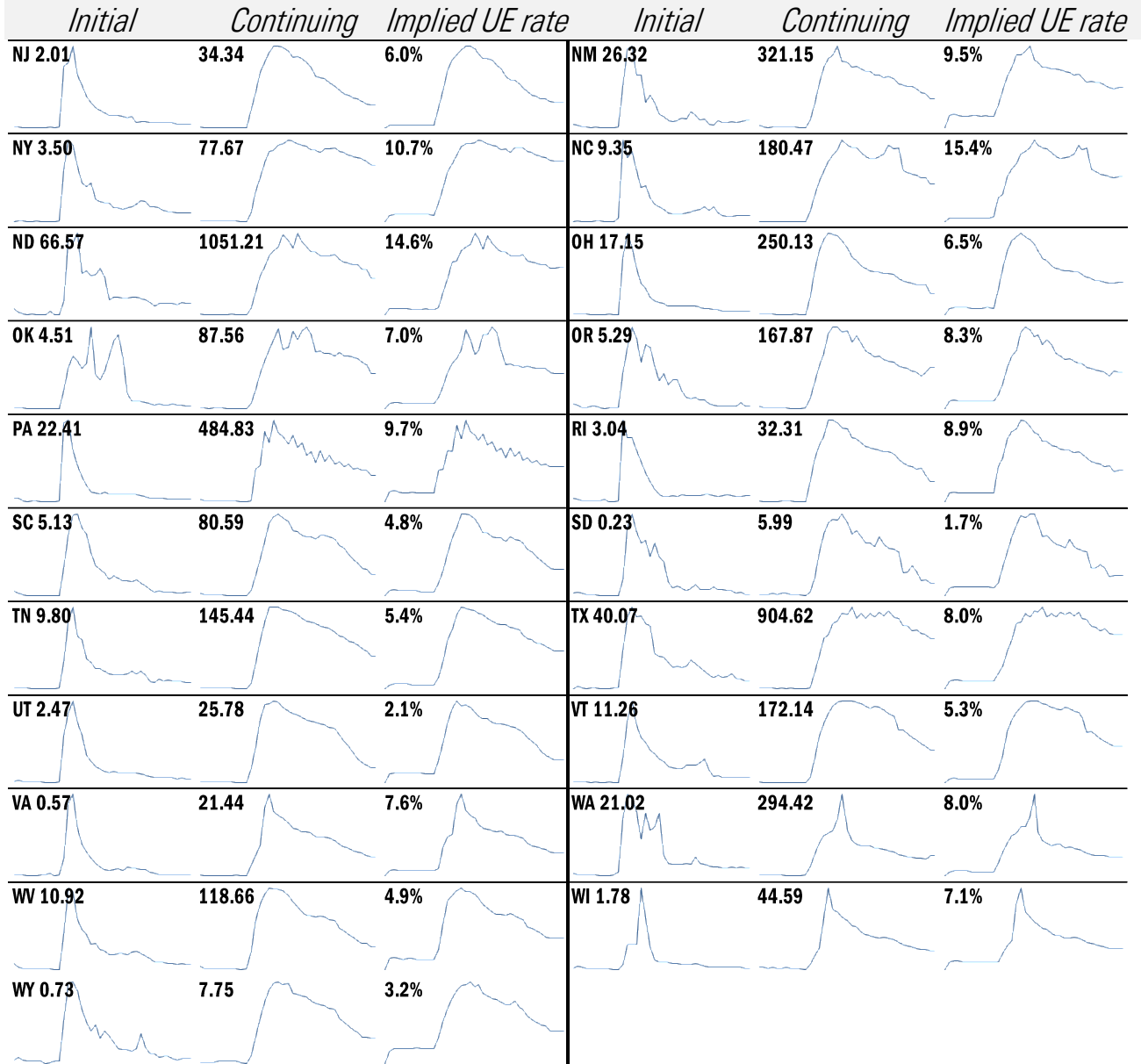
Donald Luskin: 312 273 6766 don@trendmacro.com
 Thomas Demas: 704 552 3625 tdemas@trendmacro.com

State by state unemployment insurance claims (thousands)



Source: Department of Labor, TrendMacro calculations

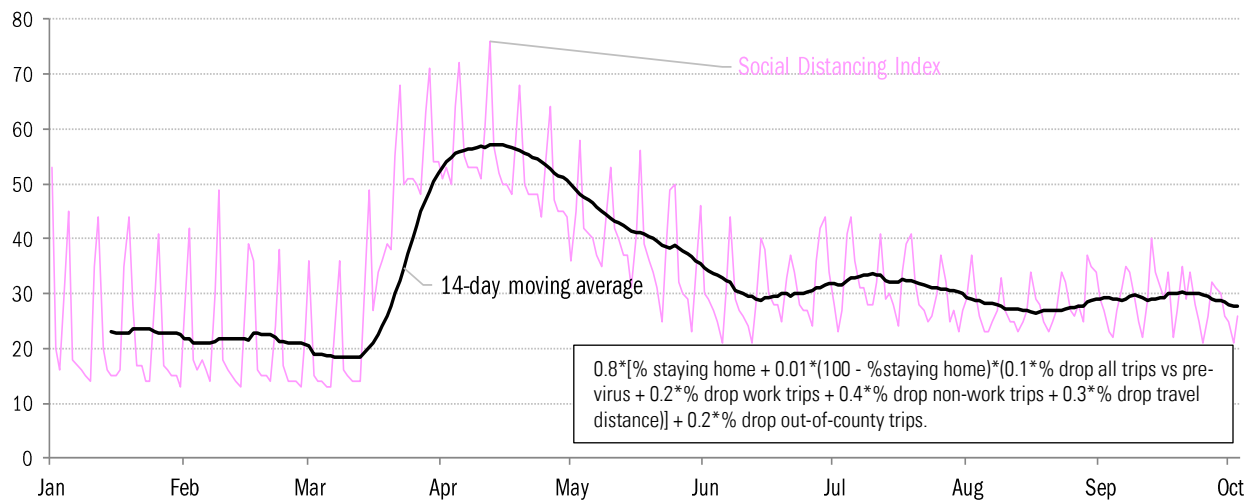
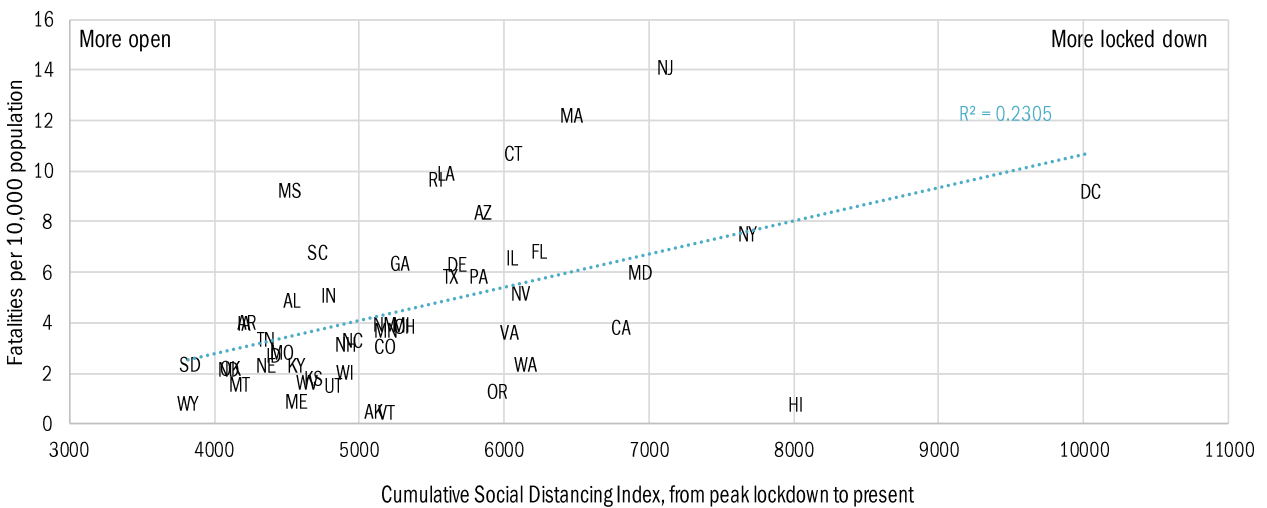
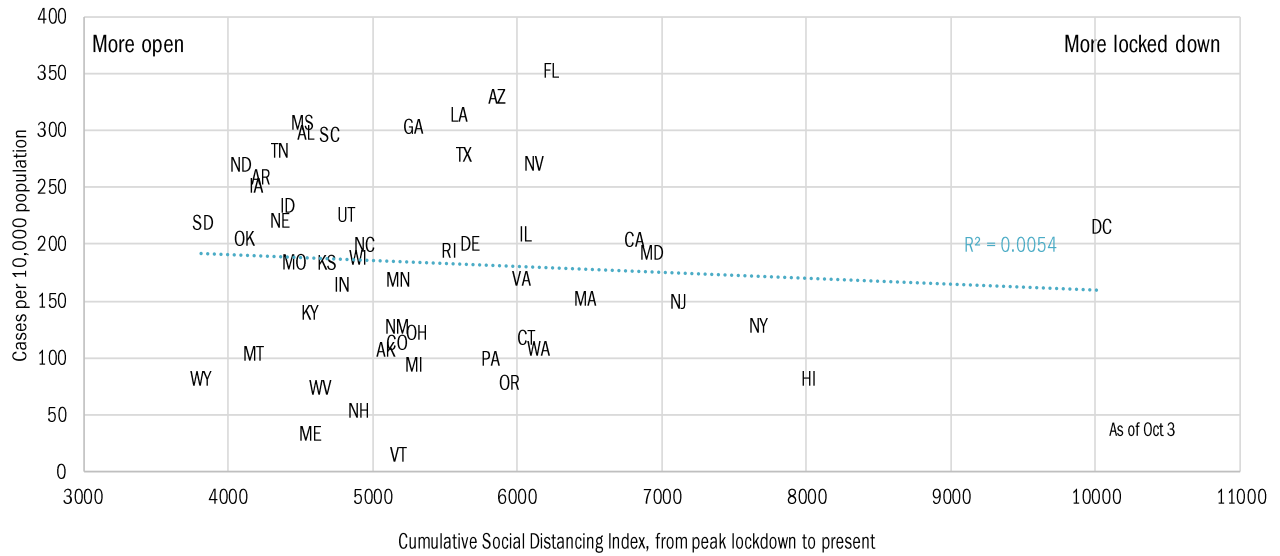
State by state unemployment insurance claims (thousands)



Source: Department of Labor, TrendMacro calculations

Assessing the costs of a "second wave" after opening up the US economy

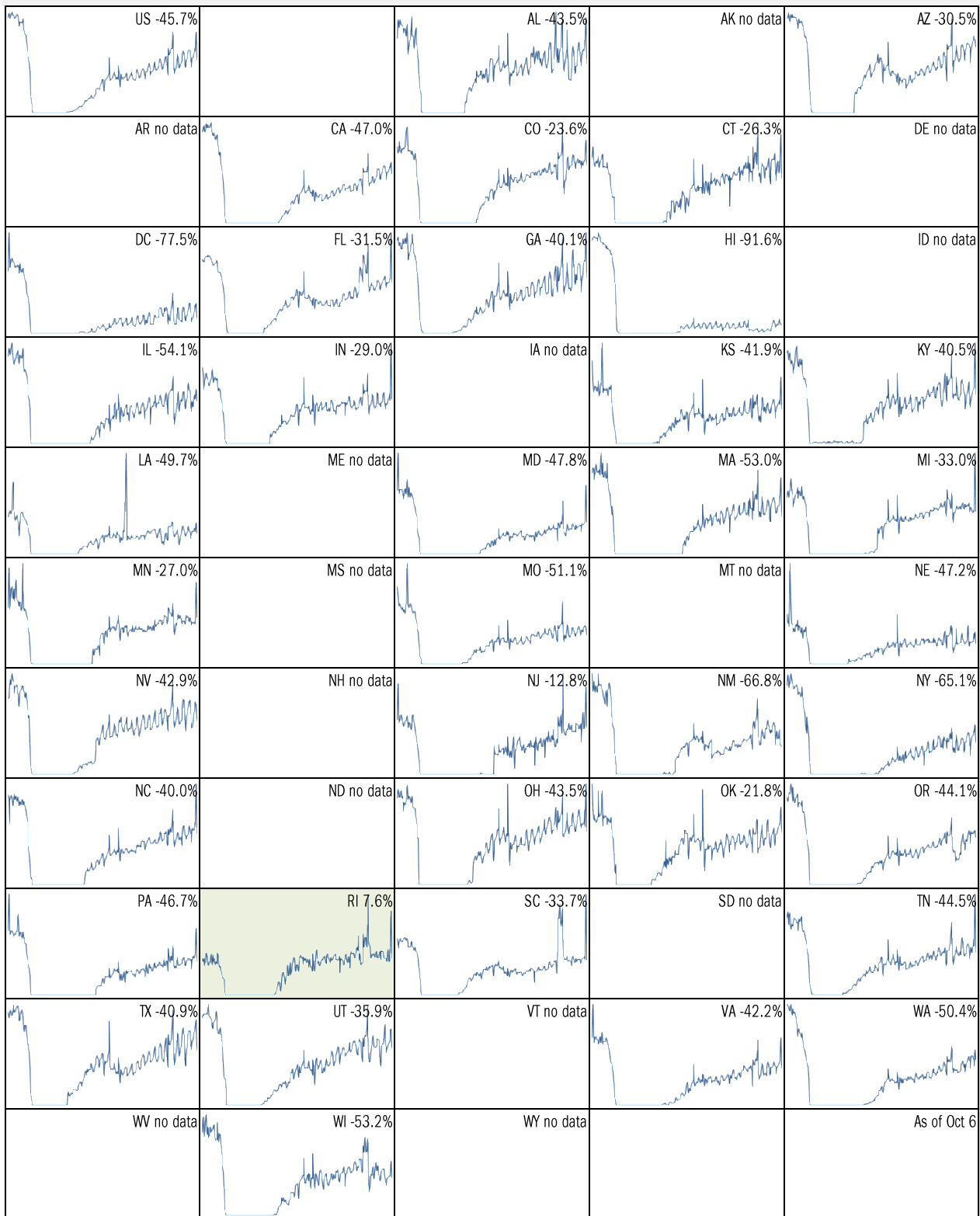
Covid-2019 fatalities and cases vs social distancing measured by cell-phone data



Source: [University of Maryland COVID-19 Impact Analysis Platform](#), TrendMacro calculations

Make America eat again:

YOY change in seated diners in restaurants Feb 18 to present ■ Positive



Source: [Open Table](#), TrendMacro calculations

Make America move again: Mobility from Feb 5 vs Jan 3 – Feb 6 baseline ■ Positive

	<i>Retail/rec</i>	<i>Grocery/pharm</i>	<i>Parks</i>	<i>Transit stations</i>	<i>Workplaces</i>	<i>Time at home</i>
US -16		-6	25	-31	-26	7
AL -13		-7	13	-8	-20	5
AK -2		-1	68	-14	-16	6
AZ -21		-13	-18	-27	-30	8
AR -7		-1	77	-3	-19	4
CA -27		-11	-9	-41	-32	11
CO -13		-3	57	-28	-27	7
CT -10		-7	69	-25	-24	7
DE -7		-2	44	-27	-25	7
DC -47		-20	-27	-64	-47	15
FL -23		-16	-29	-41	-27	8
GA -14		-8	17	-31	-26	7
HI -41		-26	-51	-64	-35	13
ID -1		7	132	8	-19	3
IL -13		-2	64	-32	-25	7

Source: [Google Mobility Reports](#), TrendMacro calculations

Make America move again: Mobility from Feb 5 vs Jan 3 – Feb 6 baseline ■ Positive

	<i>Retail/rec</i>	<i>Grocery/pharm</i>	<i>Parks</i>	<i>Transit stations</i>	<i>Workplaces</i>	<i>Residential</i>
IN -4		-1	119	0	-19	4
IA -3		12	119	-5	-17	4
KS -9		-6	87	0	-20	4
KY -12		0	80	-5	-22	5
LA -15		-5	-10	-19	-22	5
ME +1		8	149	9	-17	4
MD -16		-8	61	-38	-32	10
MA -16		-9	62	-46	-31	9
MI -9		-3	141	-19	-23	6
MN -11		-4	94	-39	-25	7
MS -10		-7	16	4	-18	4
MO -6		0	79	-11	-20	4
MT +1		11	105	16	-15	3
NE -5		0	94	3	-18	4
NV -18		-7	-16	-32	-29	8

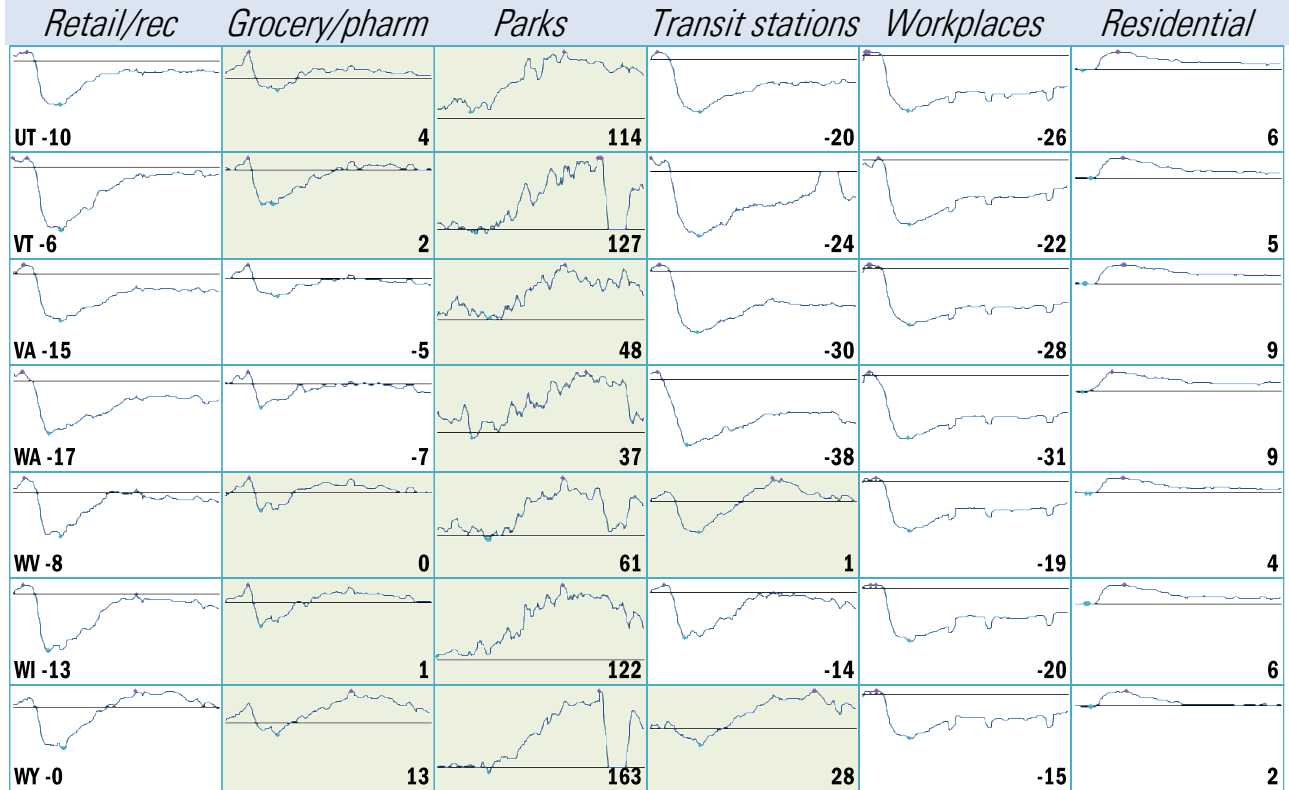
Source: [Google Mobility Reports](#), TrendMacro calculations

Make America move again: Mobility from Feb 5 vs Jan 3 – Feb 6 baseline ■ Positive

	<i>Retail/rec</i>	<i>Grocery/pharm</i>	<i>Parks</i>	<i>Transit stations</i>	<i>Workplaces</i>	<i>Residential</i>
NH -2		3	150	-9	-19	5
NJ -16		-5	87	-37	-30	9
NM -17		-8	14	-10	-27	8
NY -22		-7	36	-41	-30	8
NC -14		-4	37	-25	-25	6
ND -8		-6	75	-6	-18	4
OH -9		-3	129	-9	-21	5
OK -7		0	43	-1	-19	4
OR -15		-5	58	-26	-28	7
PA -12		-4	72	-30	-25	6
RI -9		-7	155	-45	-24	6
SC -9		-5	20	-6	-21	5
SD +3		17	182	17	-14	3
TN -9		-3	55	-13	-21	5
TX -16		-9	0	-25	-27	8

Source: [Google Mobility Reports](#), TrendMacro calculations

Make America move again: Mobility from Feb 5 vs Jan 3 – Feb 6 baseline ■ Positive



Source: [Google Mobility Reports](https://www.google.com/covid19/mobility/), TrendMacro calculations