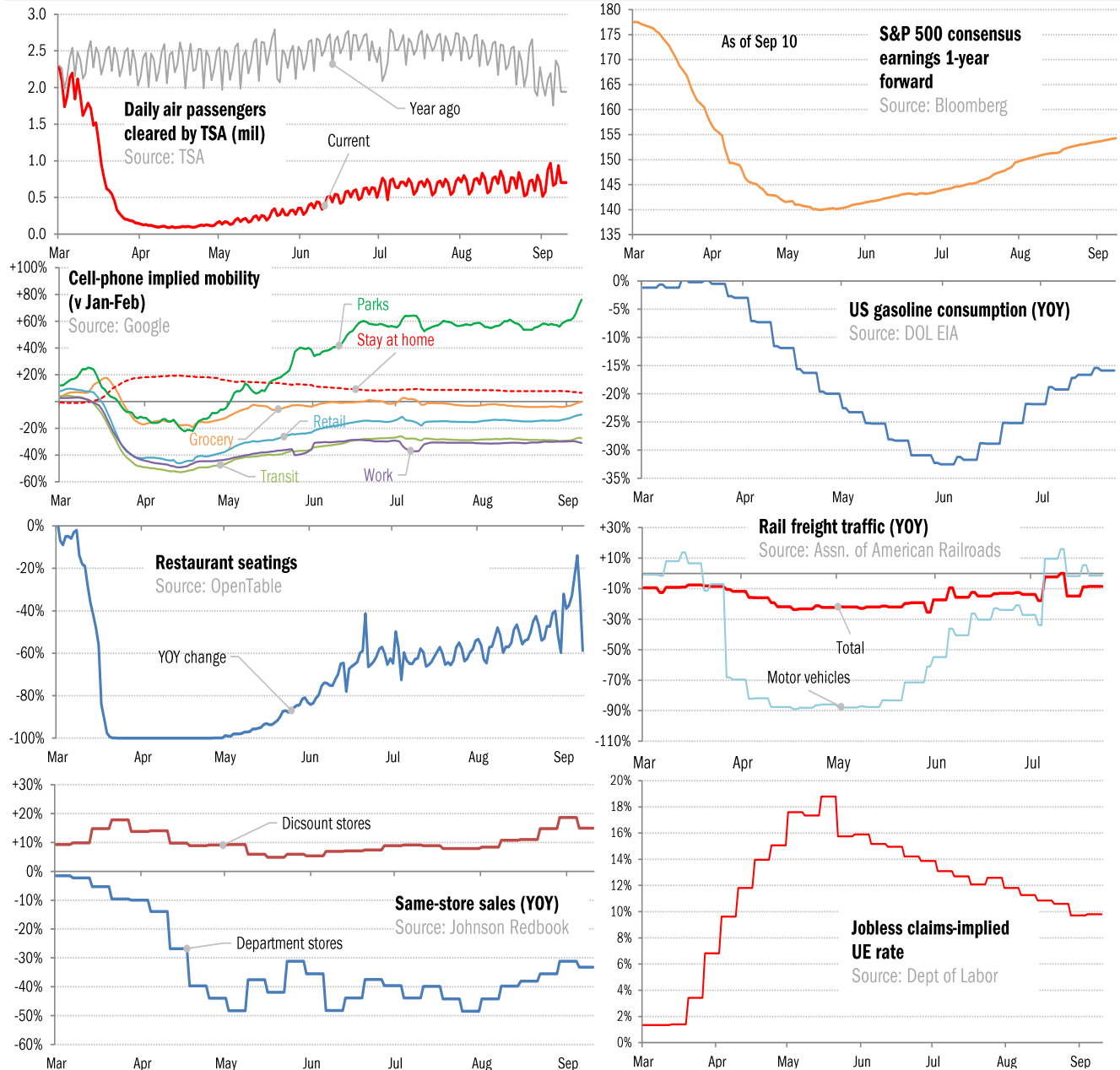


Data Insights: High-Frequency Post-Virus US Recovery Monitor

Thursday, September 10, 2020

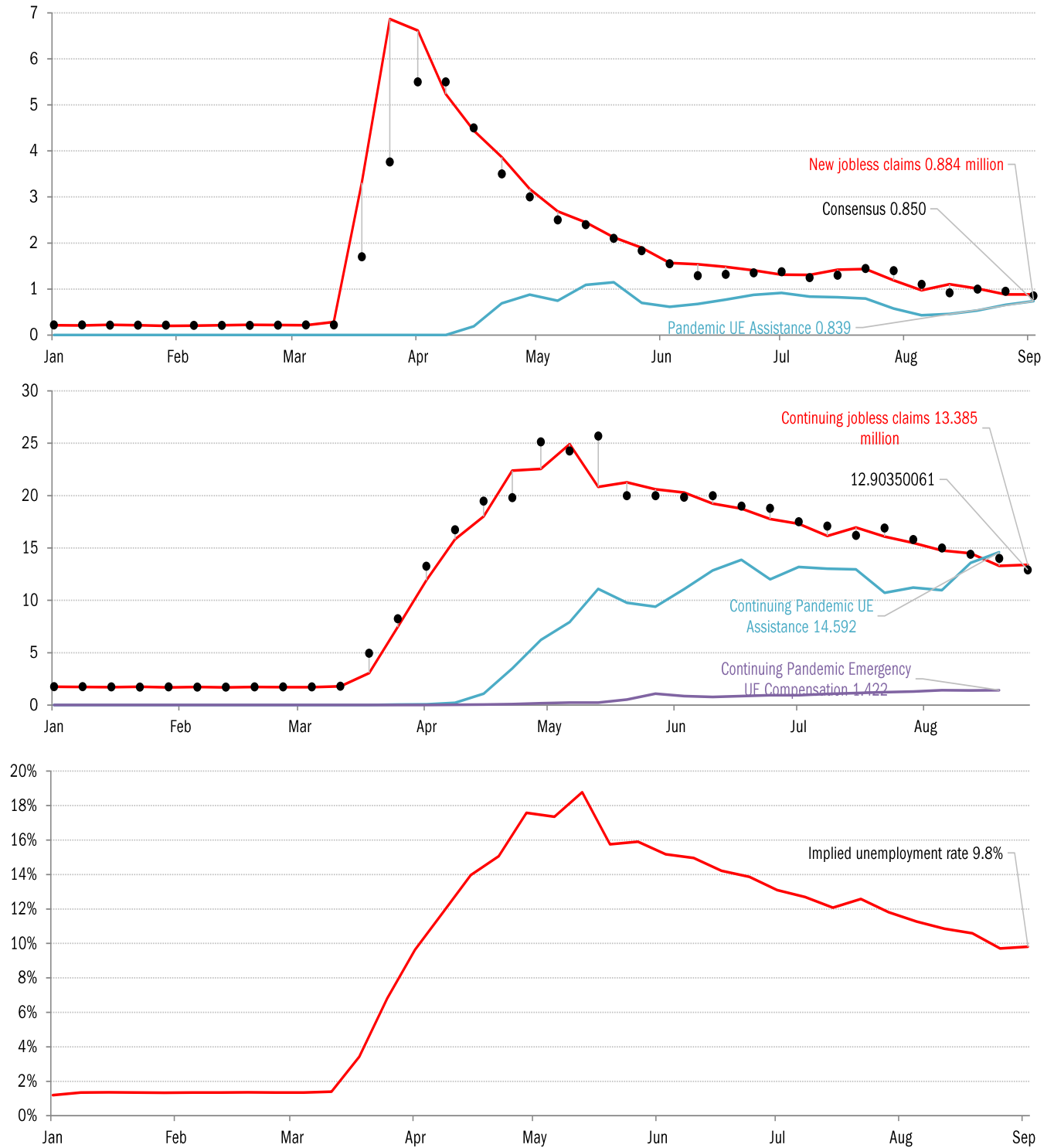
The US high-frequency macro data dashboard

(state level and other detail in subsequent charts)



Source: As indicated, TrendMacro calculations

High-frequency view of the US labor market: weekly unemployment claims (millions)

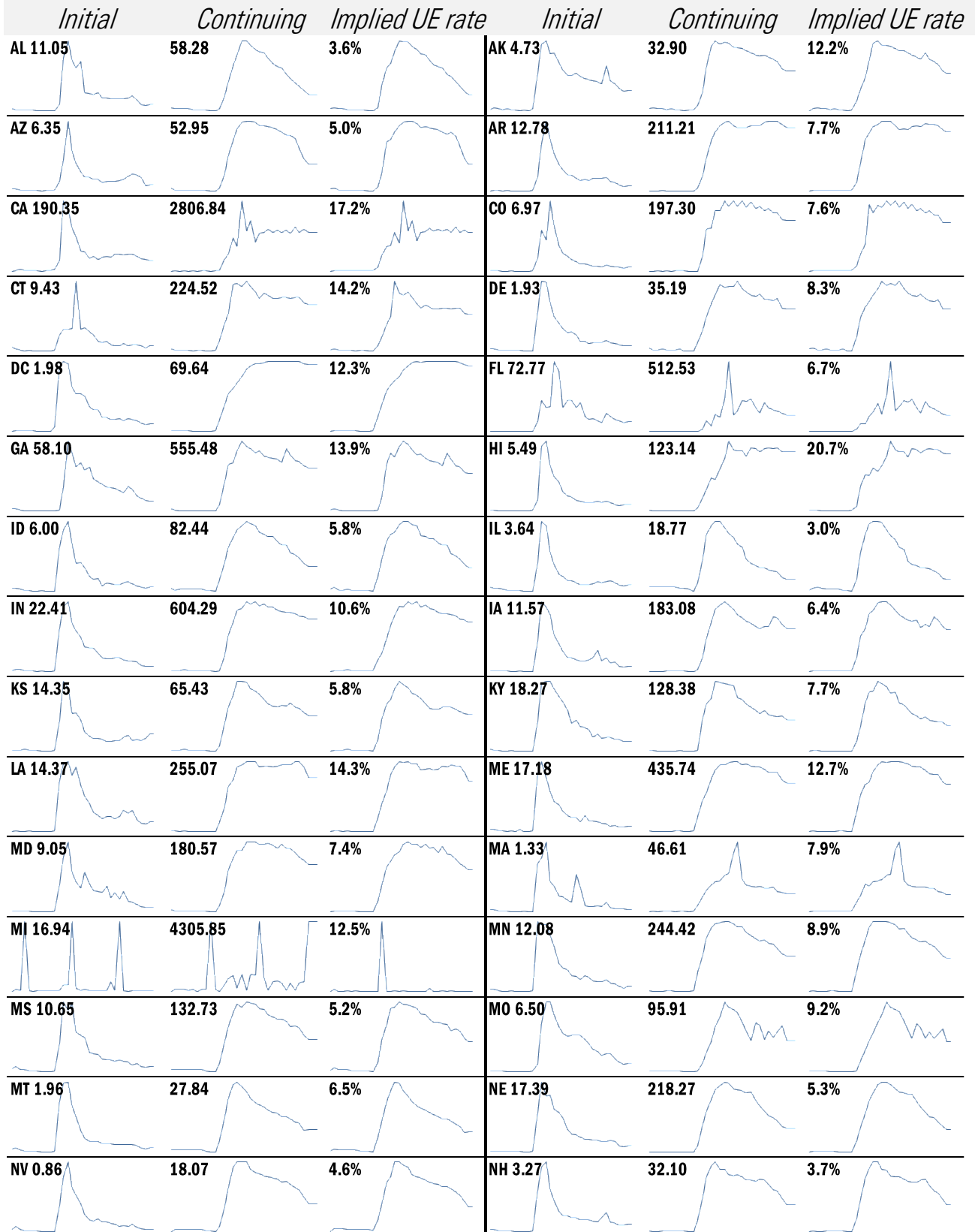


Source: Department of Labor, Bloomberg, TrendMacro calculations

For more information contact us:

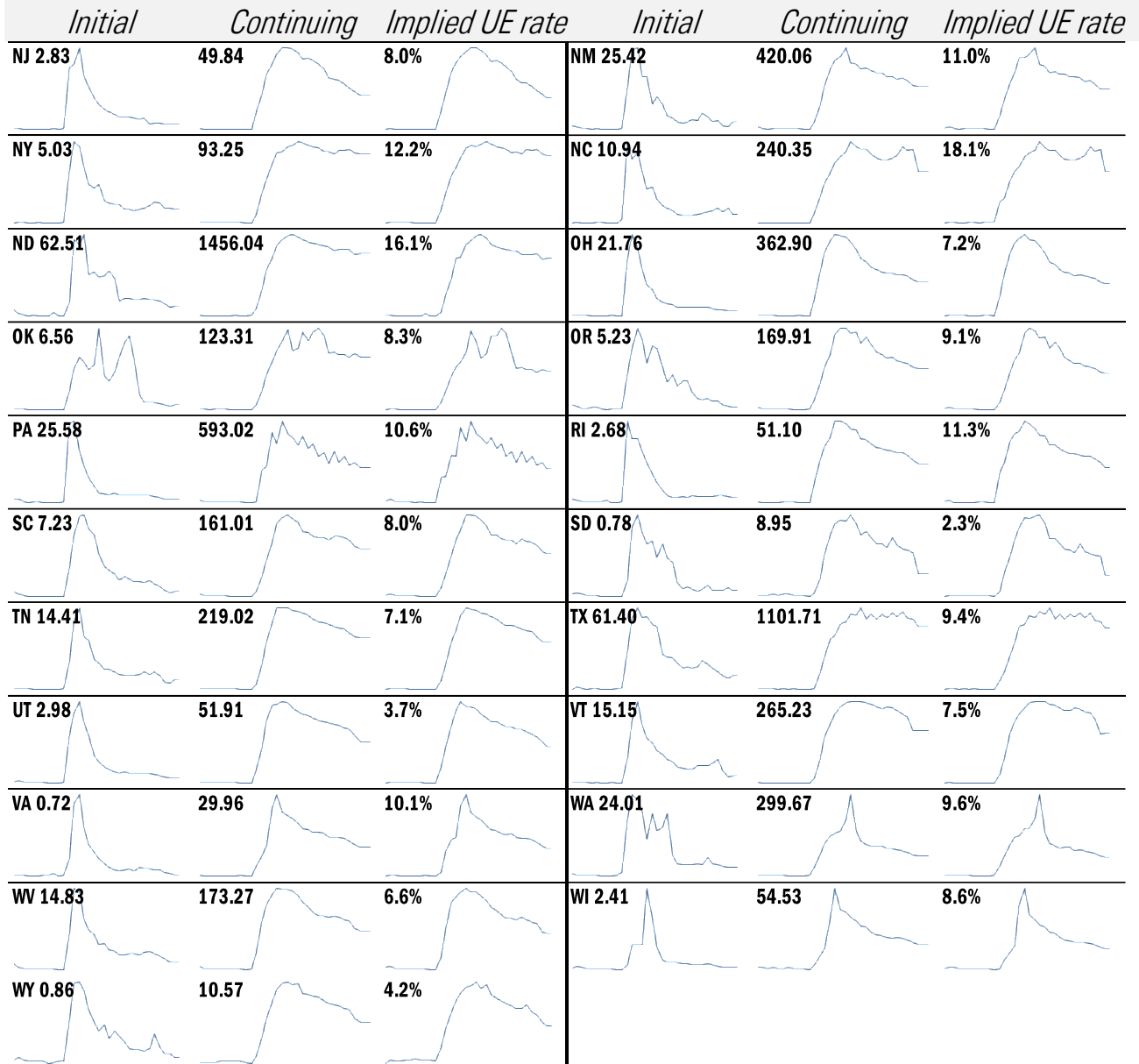
Donald Luskin: 312 273 6766 don@trendmacro.com
 Thomas Demas: 704 552 3625 tdemas@trendmacro.com

State by state unemployment insurance claims (thousands)



Source: Department of Labor, TrendMacro calculations

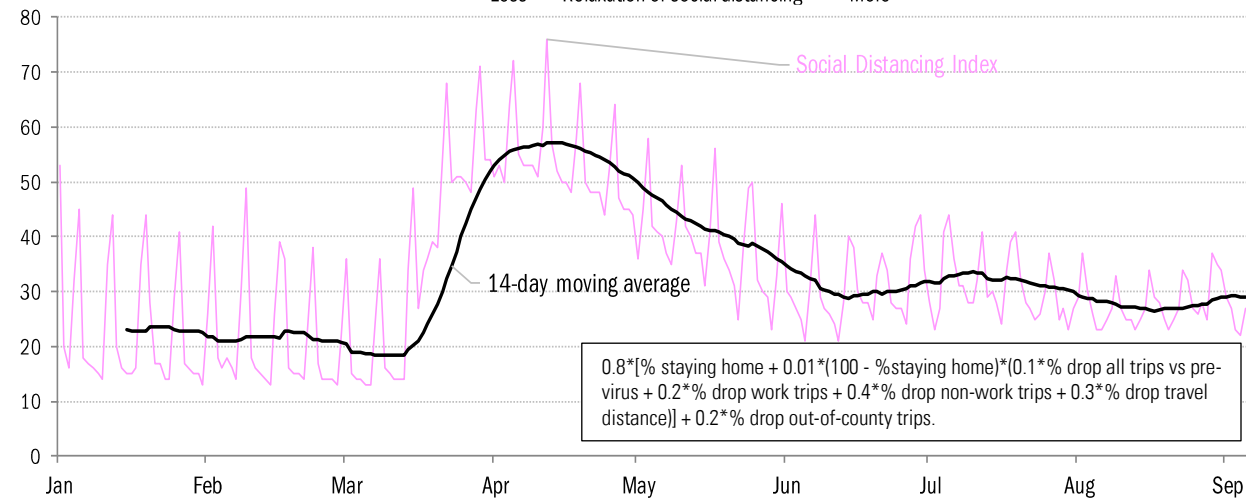
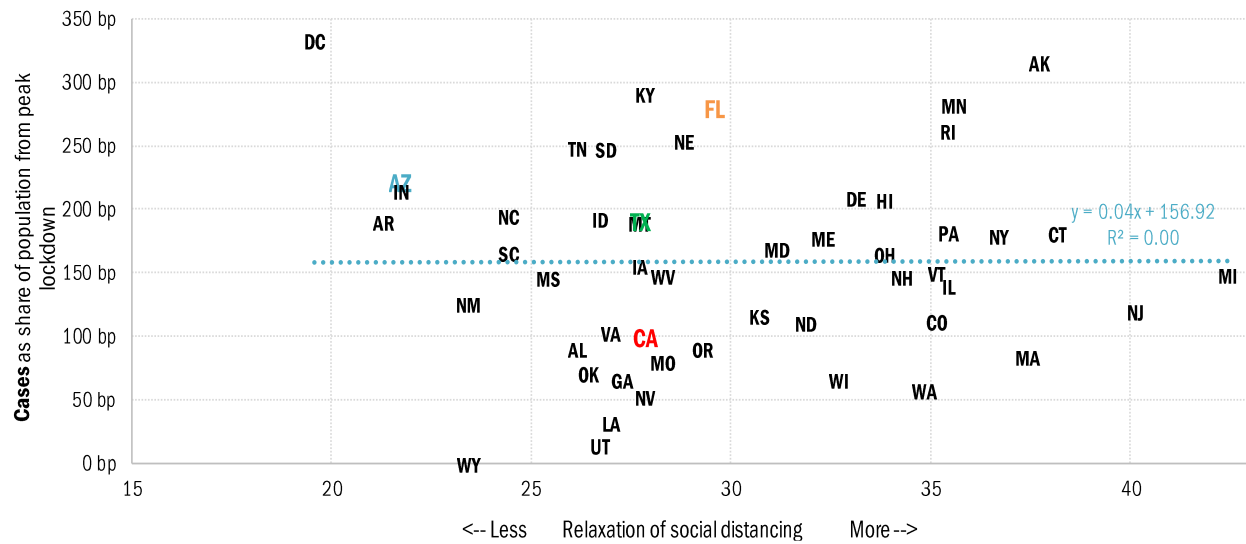
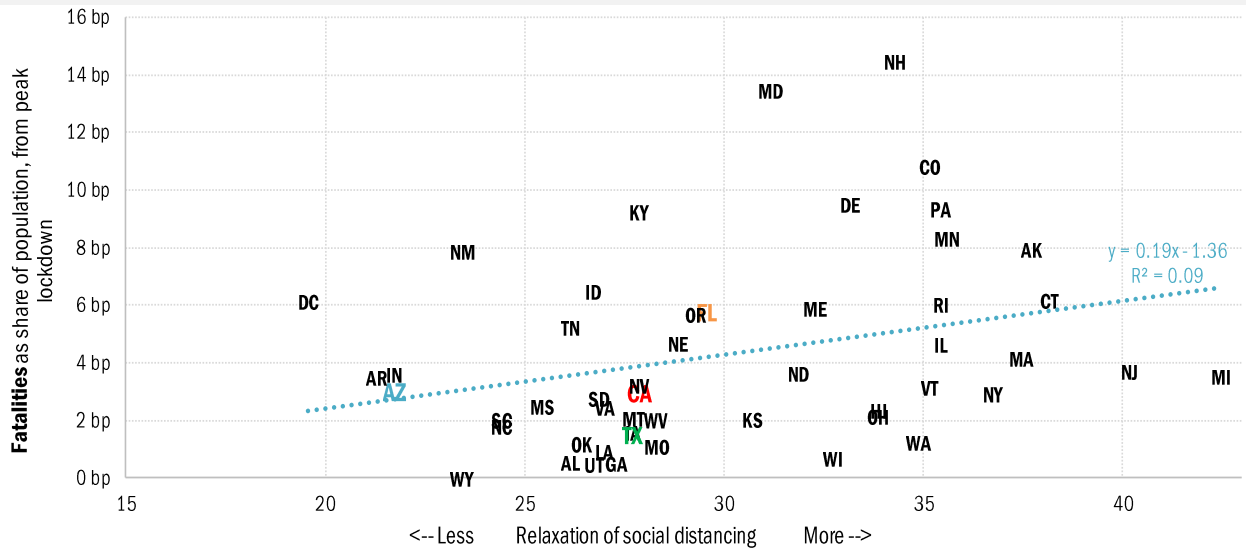
State by state unemployment insurance claims (thousands)



Source: Department of Labor, TrendMacro calculations

Assessing the costs of a "second wave" after opening up the US economy

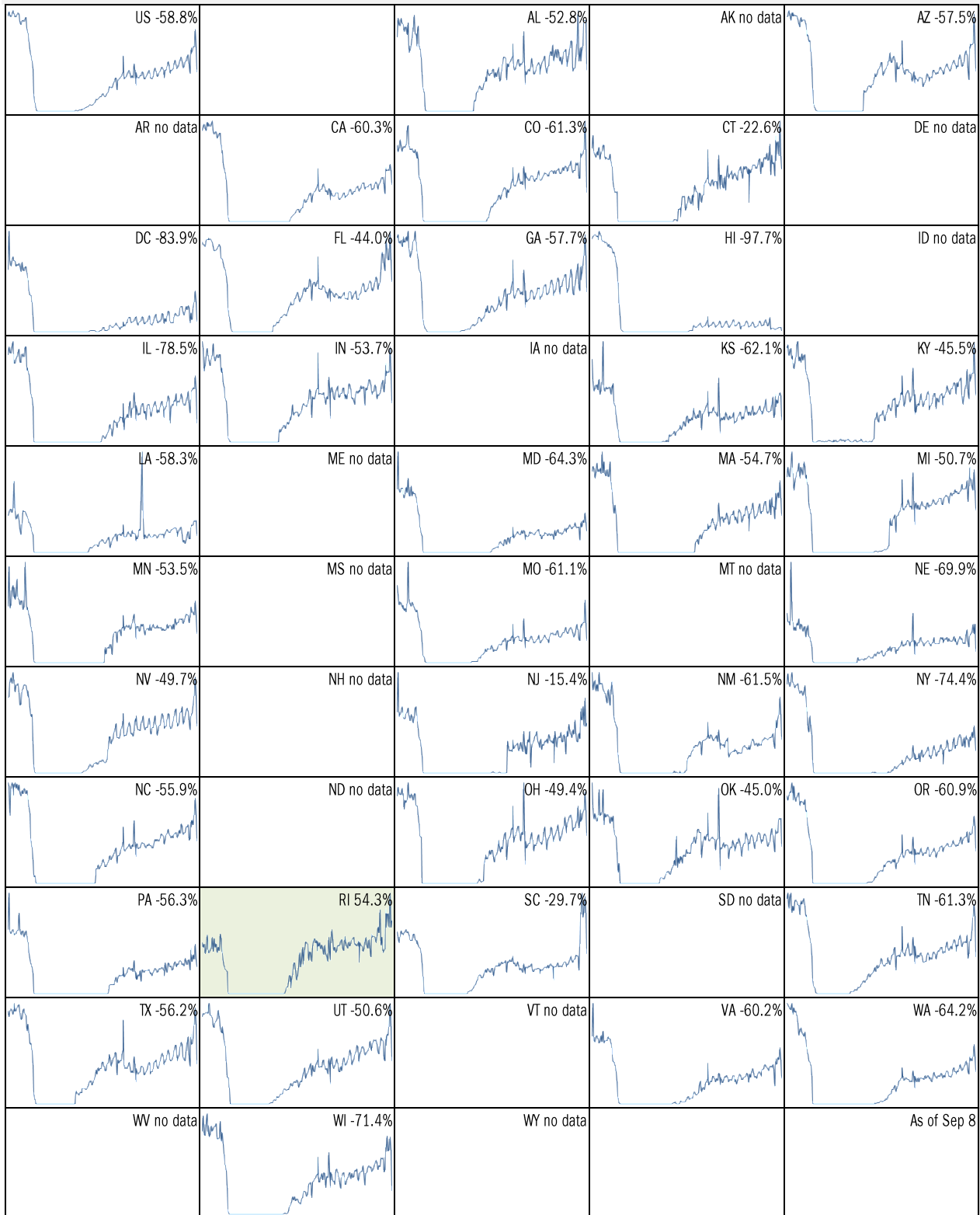
Covid-2019 fatalities and cases vs social distancing measured by cell-phone data



Source: [University of Maryland COVID-19 Impact Analysis Platform](#), TrendMacro calculations

Make America eat again:

YOY change in seated diners in restaurants Feb 18 to present ■ Positive



Source: [Open Table](#), TrendMacro calculations

Make America move again: Mobility from Feb 5 vs Jan 3 – Feb 6 baseline ■ Positive

	<i>Retail/rec</i>	<i>Grocery/pharm</i>	<i>Parks</i>	<i>Transit stations</i>	<i>Workplaces</i>	<i>Time at home</i>
US -11		-1	66	-28	-30	7
AL -5		2	60	0	-24	5
AK +10		13	141	-3	-22	4
AZ -18		-9	-5	-31	-34	9
AR -1		3	84	-2	-23	4
CA -25		-7	15	-40	-36	11
CO -8		3	104	-27	-31	7
CT -3		-2	114	-15	-30	7
DE +0		5	95	-15	-28	7
DC -44		-17	-24	-64	-50	15
FL -22		-13	-14	-41	-31	8
GA -10		-3	62	-29	-30	7
HI -44		-22	-52	-64	-40	16
ID +7		16	154	13	-24	2
IL -7		3	132	-29	-29	7

Source: [Google Mobility Reports](#), TrendMacro calculations

Make America move again: Mobility from Feb 5 vs Jan 3 – Feb 6 baseline ■ Positive

	<i>Retail/rec</i>	<i>Grocery/pharm</i>	<i>Parks</i>	<i>Transit stations</i>	<i>Workplaces</i>	<i>Residential</i>
IN +3						
		6	220	3	-25	3
IA +6						
		23	247	4	-24	3
KS -0						
		1	164	2	-27	4
KY -4						
		7	164	-3	-28	5
LA -7						
		3	26	-11	-30	4
ME +16						
		19	339	25	-23	3
MD -11						
		-1	137	-35	-35	10
MA -8						
		-3	134	-40	-35	8
MI -1						
		5	228	-13	-29	5
MN -3						
		4	216	-34	-30	6
MS +0						
		3	69	7	-24	3
MO +3						
		8	136	-9	-25	4
MT +13						
		26	221	28	-21	0
NE +2						
		9	190	4	-24	3
NV -14						
		-1	-5	-34	-33	8

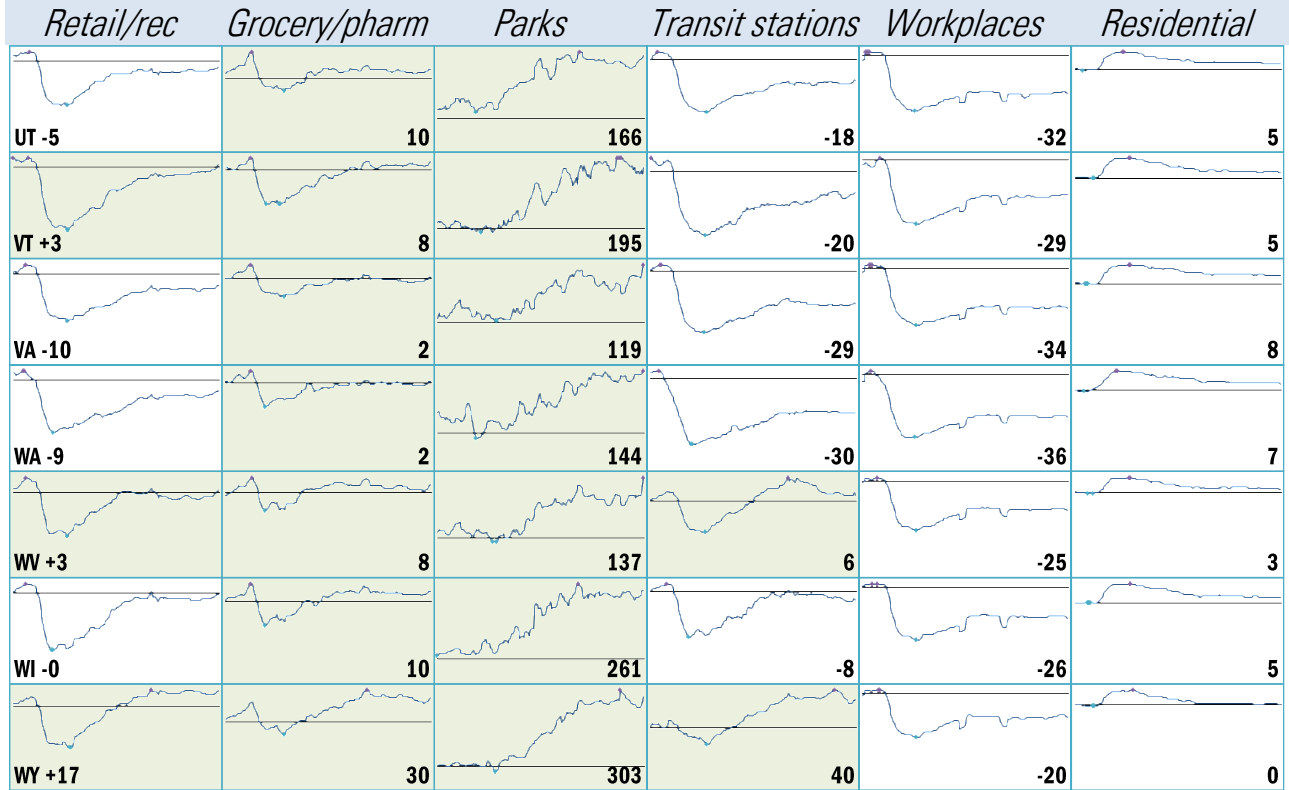
Source: [Google Mobility Reports](https://www.google.com/covid19/mobility/), TrendMacro calculations

Make America move again: Mobility from Feb 5 vs Jan 3 – Feb 6 baseline ■ Positive

	<i>Retail/rec</i>	<i>Grocery/pharm</i>	<i>Parks</i>	<i>Transit stations</i>	<i>Workplaces</i>	<i>Residential</i>
NH +7		10	242	-1	-26	5
NJ -10		3	138	-31	-33	8
NM -9		-1	59	-10	-31	7
NY -14		-1	95	-39	-35	8
NC -8		3	113	-21	-29	6
ND +2		6	156	2	-22	2
OH -2		5	230	-4	-27	4
OK 0		7	84	0	-25	4
OR -6		6	152	-19	-32	6
PA -6		3	147	-24	-31	6
RI +1		1	156	-27	-28	6
SC -2		4	77	1	-27	5
SD +17		32	271	29	-21	2
TN -1		4	124	-10	-27	4
TX -12		-6	18	-26	-33	9

Source: [Google Mobility Reports](https://www.google.com/covid19/mobility/), TrendMacro calculations

Make America move again: Mobility from Feb 5 vs Jan 3 – Feb 6 baseline ■ Positive



Source: [Google Mobility Reports](https://www.google.com/covid19/mobility/), TrendMacro calculations