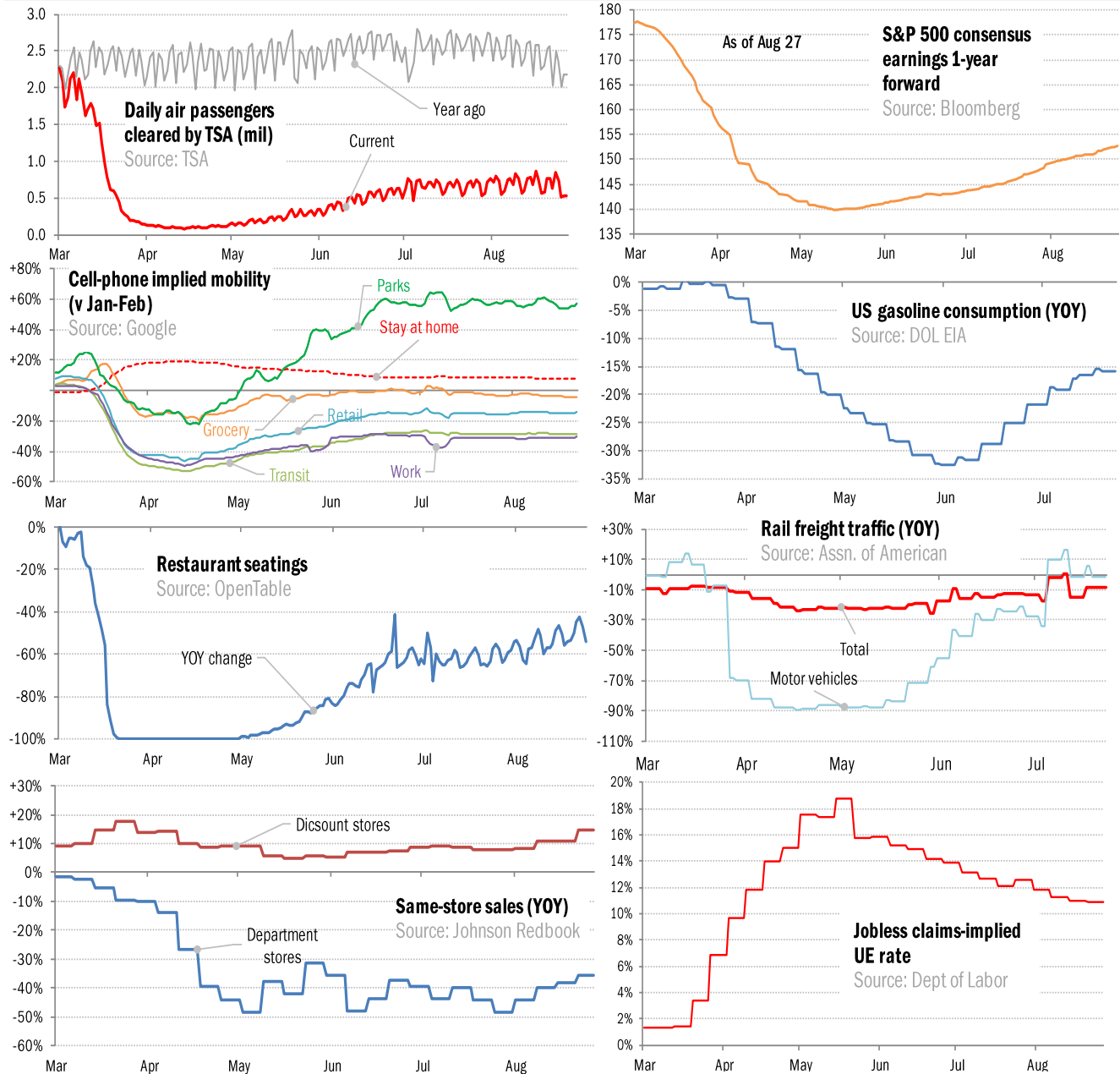


Data Insights: High-Frequency Post-Virus US Recovery Monitor

Thursday, August 27, 2020

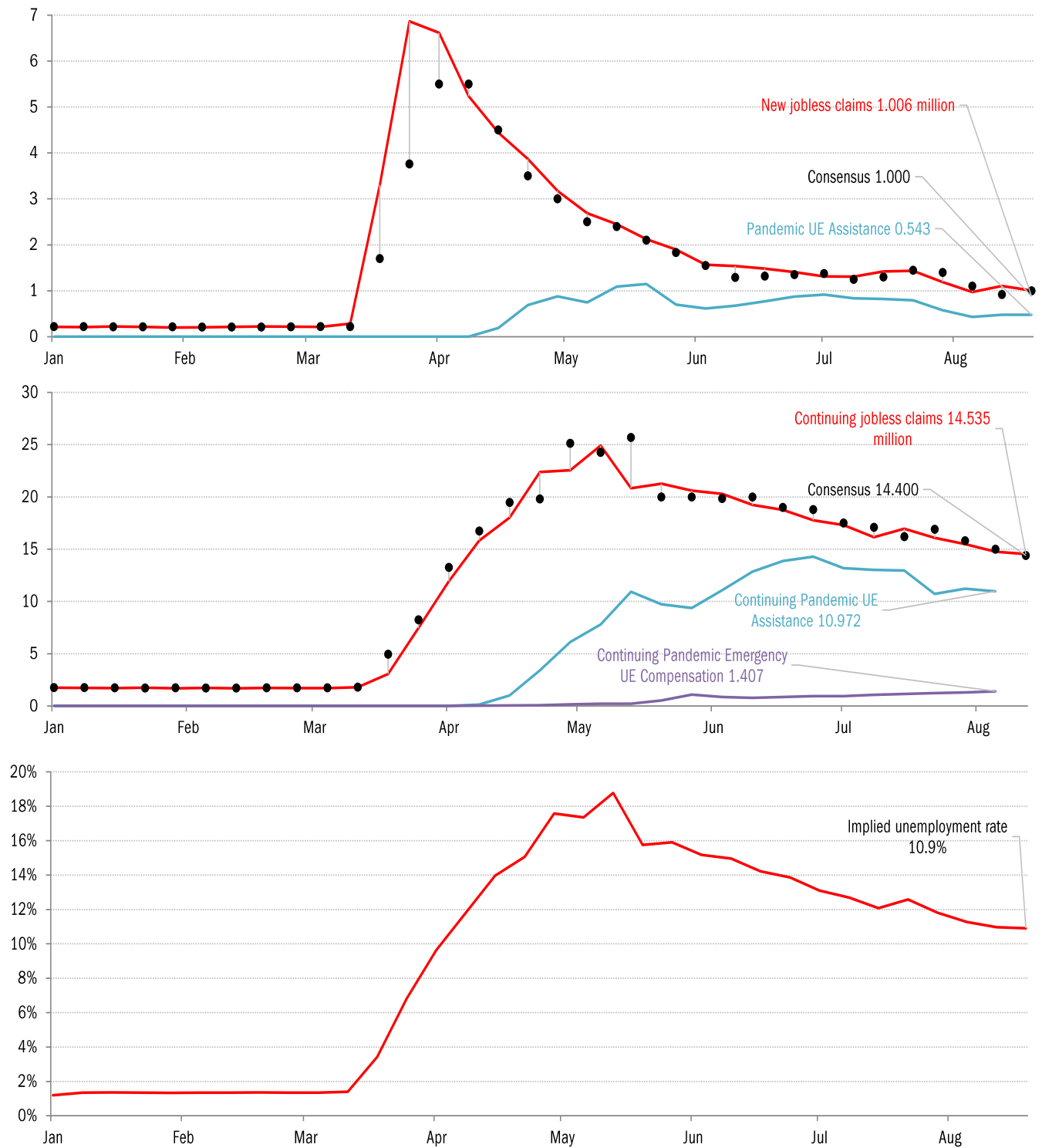
The US high-frequency macro data dashboard

(state level and other detail in subsequent charts)



Source: As indicated, TrendMacro calculations

High-frequency view of the US labor market: weekly unemployment claims (millions)

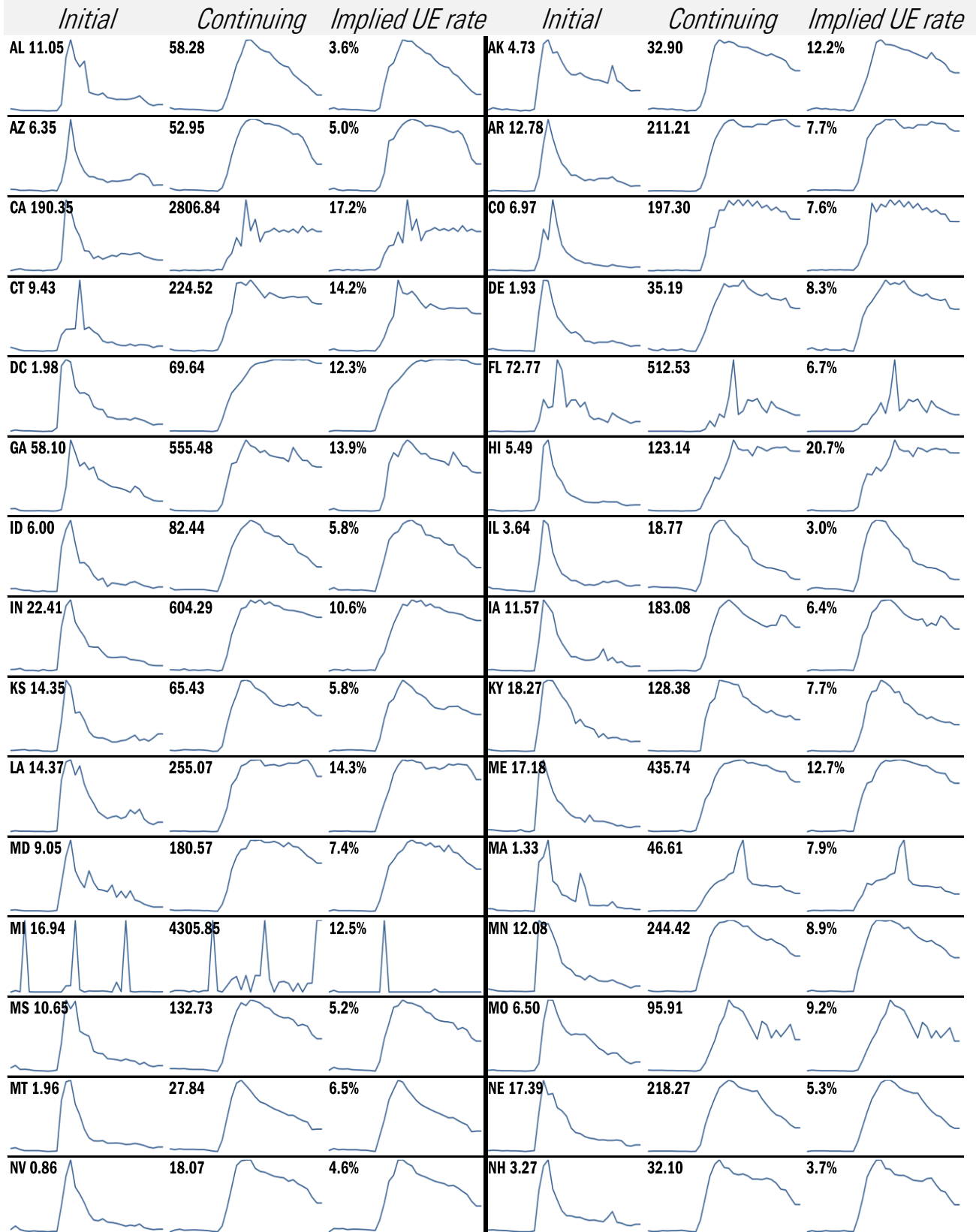


Source: Department of Labor, Bloomberg, TrendMacro calculations

For more information contact us:

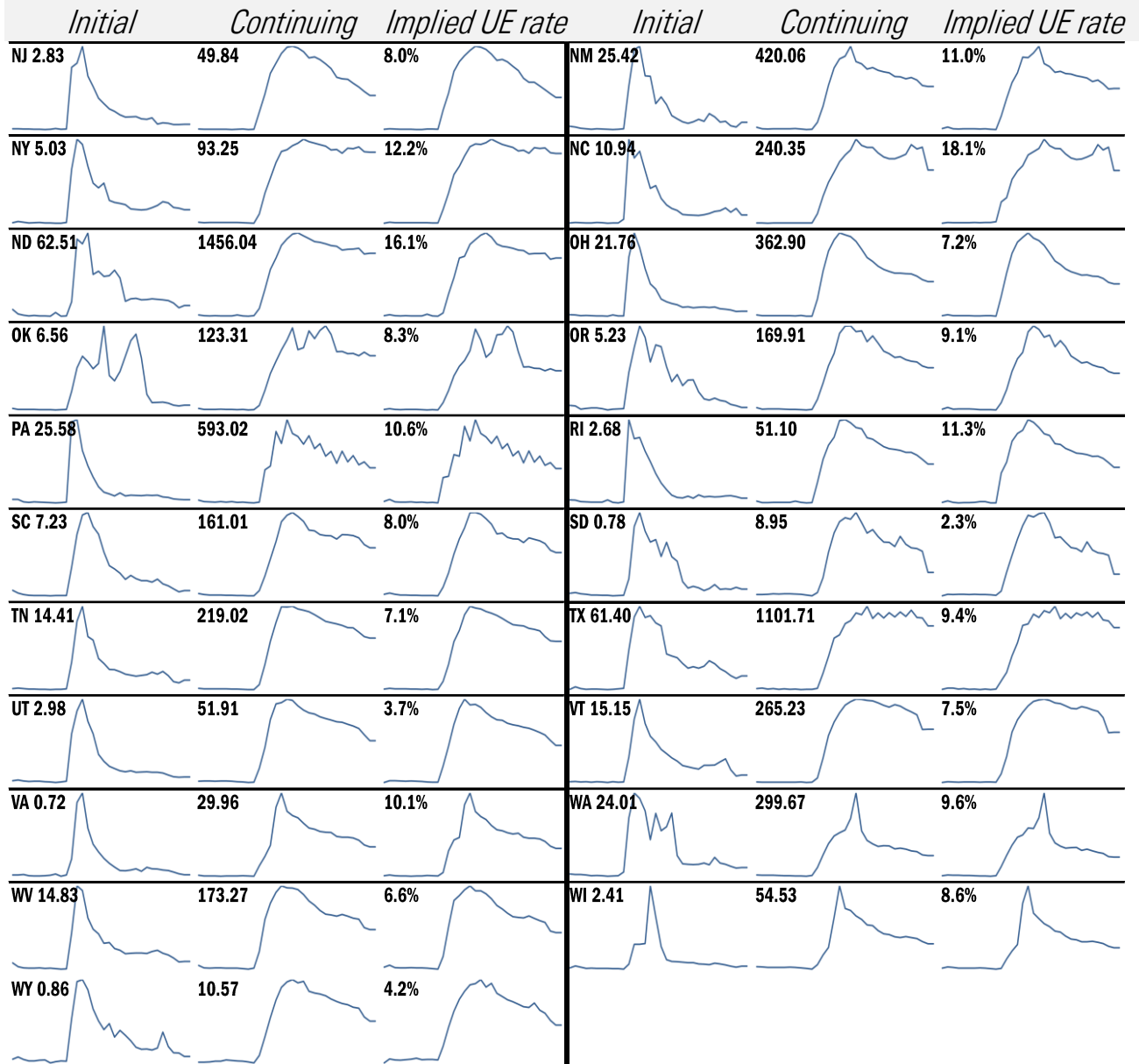
Donald Luskin: 312 273 6766 don@trendmacro.com
 Thomas Demas: 704 552 3625 tdemas@trendmacro.com

State by state unemployment insurance claims (thousands)



Source: Department of Labor, TrendMacro calculations

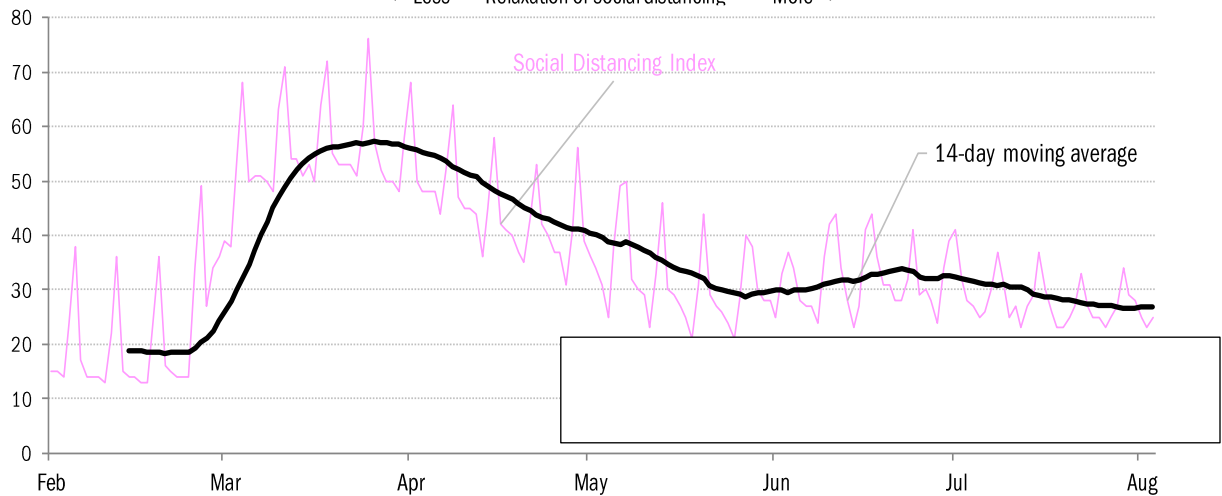
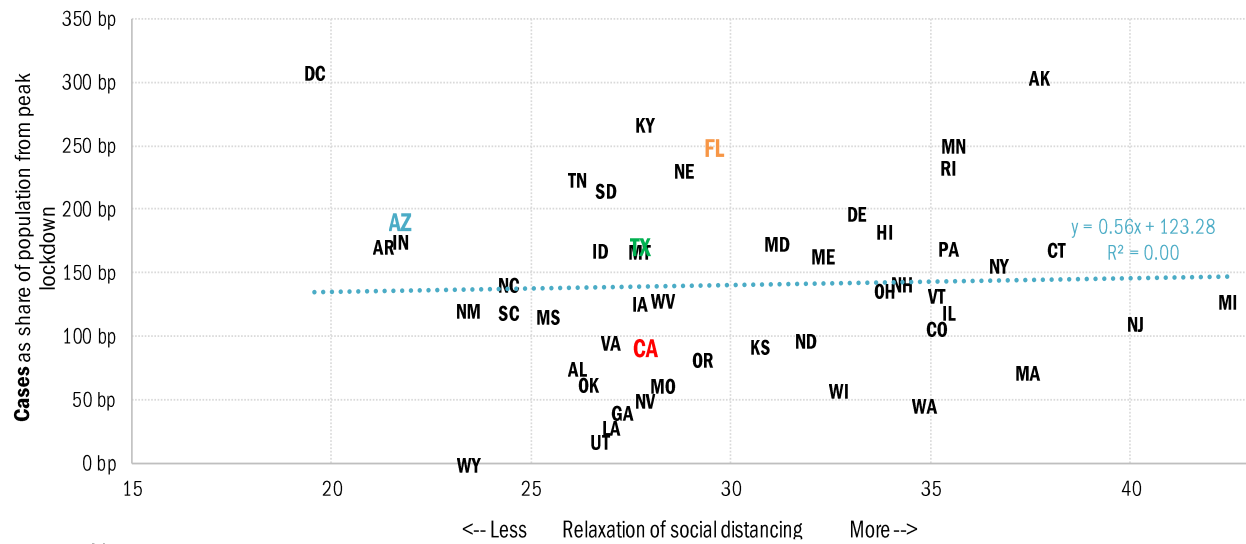
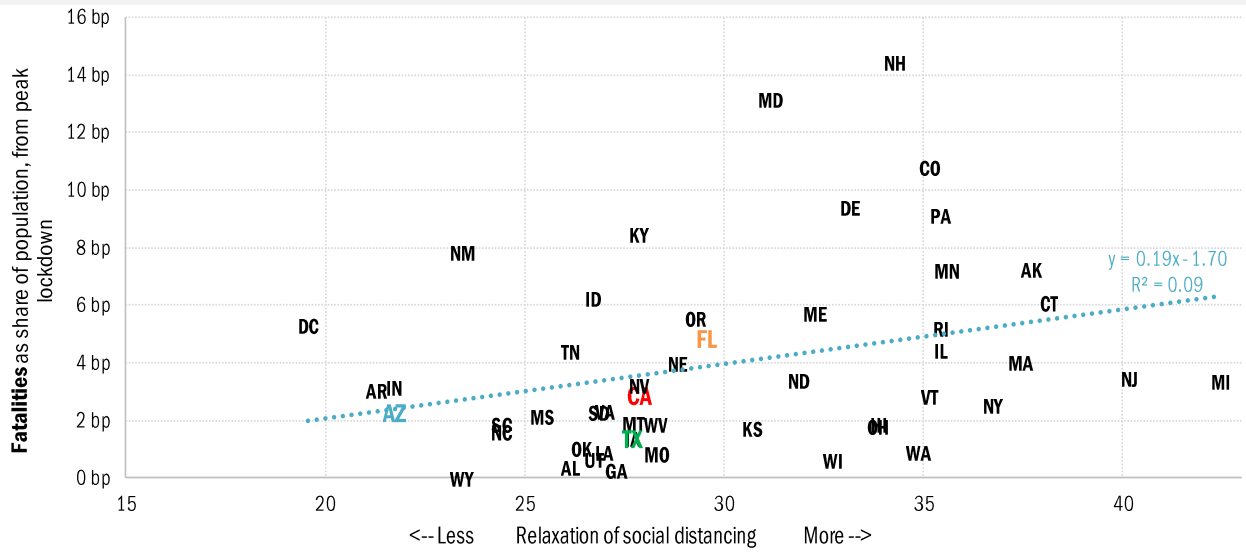
State by state unemployment insurance claims (thousands)



Source: Department of Labor, TrendMacro calculations

Assessing the risk of a "second wave" after opening up the US economy

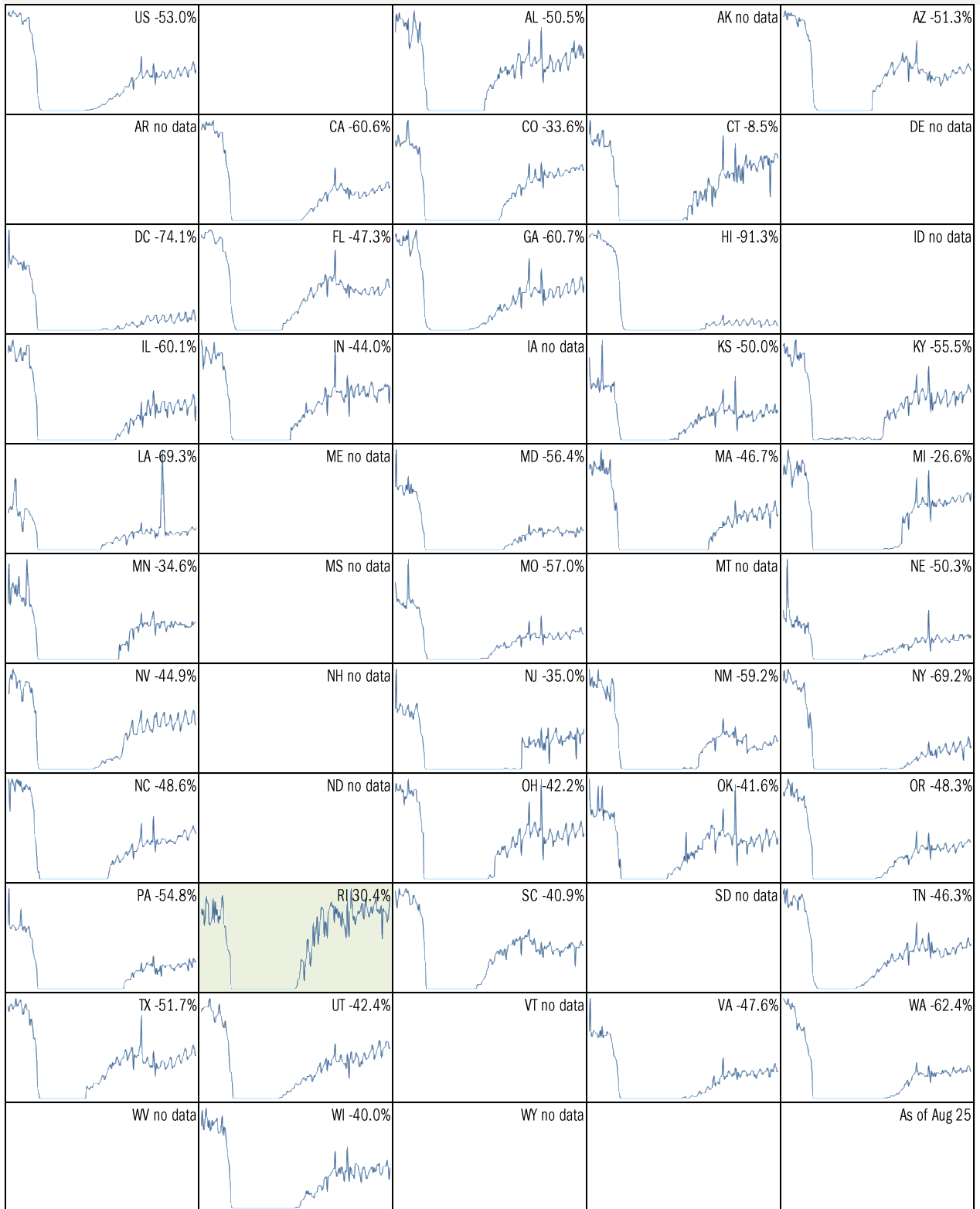
Covid-2019 fatalities and cases vs social distancing measured by cell-phone data



Source: [University of Maryland COVID-19 Impact Analysis Platform](#), TrendMacro calculations

Make America eat again:

YOY change in seated diners in restaurants Feb 18 to present ■ Positive



Source: [Open Table](#), TrendMacro calculations

Make America move again: Mobility from Feb 5 vs Jan 3 – Feb 6 baseline ■ Positive

	<i>Retail/rec</i>	<i>Grocery/pharm</i>	<i>Parks</i>	<i>Transit stations</i>	<i>Workplaces</i>	<i>Time at home</i>
US -14		-4	58	-29	-30	8
AL -9		-1	43	-2	-24	6
AK +8		11	170	1	-22	4
AZ -23		-13	-19	-31	-34	10
AR -1		3	106	0	-24	4
CA -29		-10	1	-41	-36	12
CO -11		0	86	-28	-32	7
CT -7		-6	128	-16	-30	7
DE -1		3	99	-14	-28	7
DC -47		-20	-24	-66	-49	15
FL -24		-15	-23	-43	-32	9
GA -14		-6	35	-32	-30	8
HI -39		-24	-55	-64	-37	14
ID +4		14	118	16	-25	3
IL -10		-1	117	-30	-30	7

Source: [Google Mobility Reports](#), TrendMacro calculations

Make America move again: Mobility from Feb 5 vs Jan 3 – Feb 6 baseline ■ Positive

	<i>Retail/rec</i>	<i>Grocery/pharm</i>	<i>Parks</i>	<i>Transit stations</i>	<i>Workplaces</i>	<i>Residential</i>
IN -2		3	182	4	-23	4
IA +4		19	206	5	-23	3
KS -4		-3	140	4	-25	5
KY -9		3	118	-6	-26	5
LA -14		2	5	-19	-26	6
ME +12		16	308	25	-23	4
MD -14		-4	126	-37	-35	10
MA -13		-8	122	-42	-35	9
MI -5		1	282	-11	-27	5
MN -7		0	186	-33	-29	7
MS -8		-1	36	2	-23	5
MO -1		4	124	-9	-24	5
MT +9		23	208	29	-21	2
NE -3		4	146	4	-23	5
NV -18		-7	-20	-35	-33	9

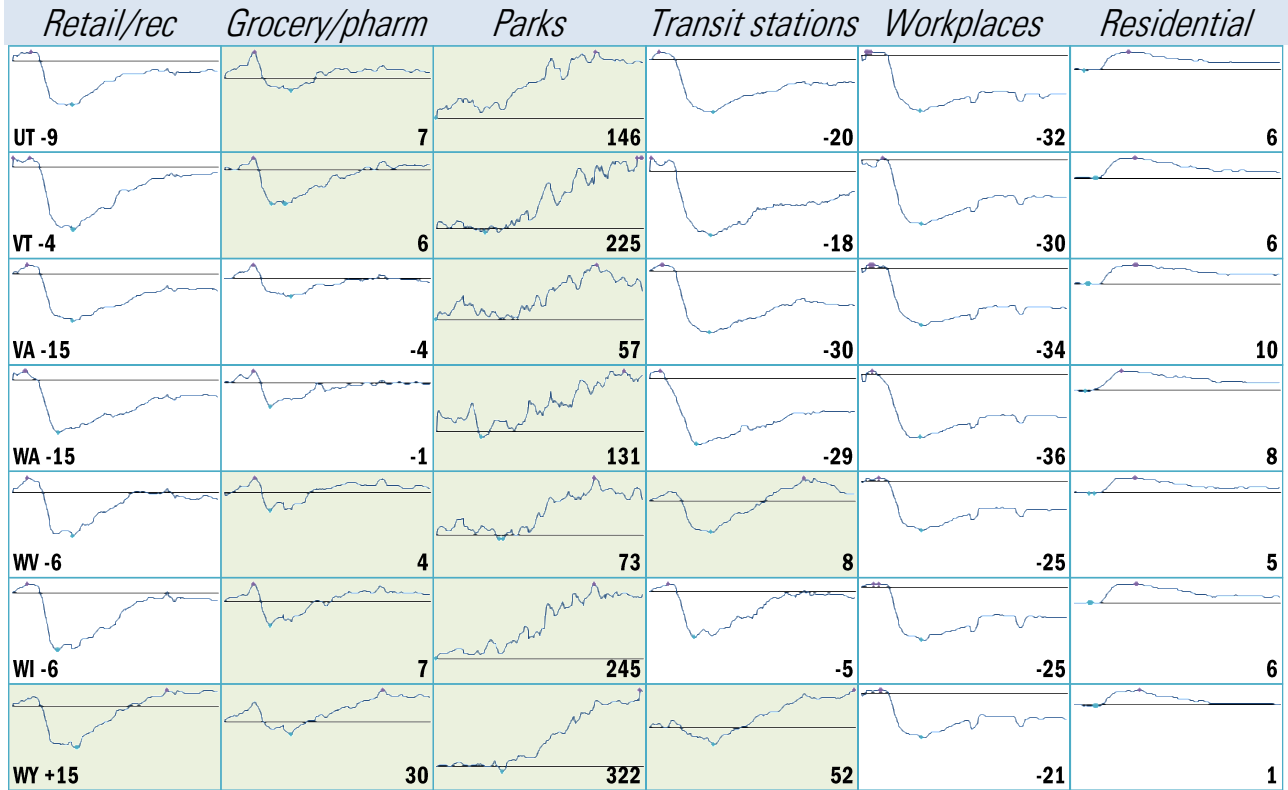
Source: [Google Mobility Reports](#), TrendMacro calculations

Make America move again: Mobility from Feb 5 vs Jan 3 – Feb 6 baseline ■ Positive

	<i>Retail/rec</i>	<i>Grocery/pharm</i>	<i>Parks</i>	<i>Transit stations</i>	<i>Workplaces</i>	<i>Residential</i>
NH +4		7	268	-3	-26	6
NJ -15		-2	162	-34	-33	9
NM -17		-6	31	-14	-30	9
NY -20		-5	87	-41	-34	8
NC -13		-2	69	-24	-28	7
ND +1		4	136	2	-21	3
OH -6		1	201	-3	-26	5
OK -4		2	71	-1	-24	5
OR -10		1	129	-19	-32	6
PA -9		-1	131	-25	-30	7
RI -4		-4	255	-30	-28	7
SC -8		-1	44	-3	-25	6
SD +13		29	300	31	-19	3
TN -7		0	87	-11	-25	5
TX -16		-8	8	-27	-32	10

Source: [Google Mobility Reports](#), TrendMacro calculations

Make America move again: Mobility from Feb 5 vs Jan 3 – Feb 6 baseline ■ Positive



Source: [Google Mobility Reports](https://www.google.com/covid19/mobility/), TrendMacro calculations