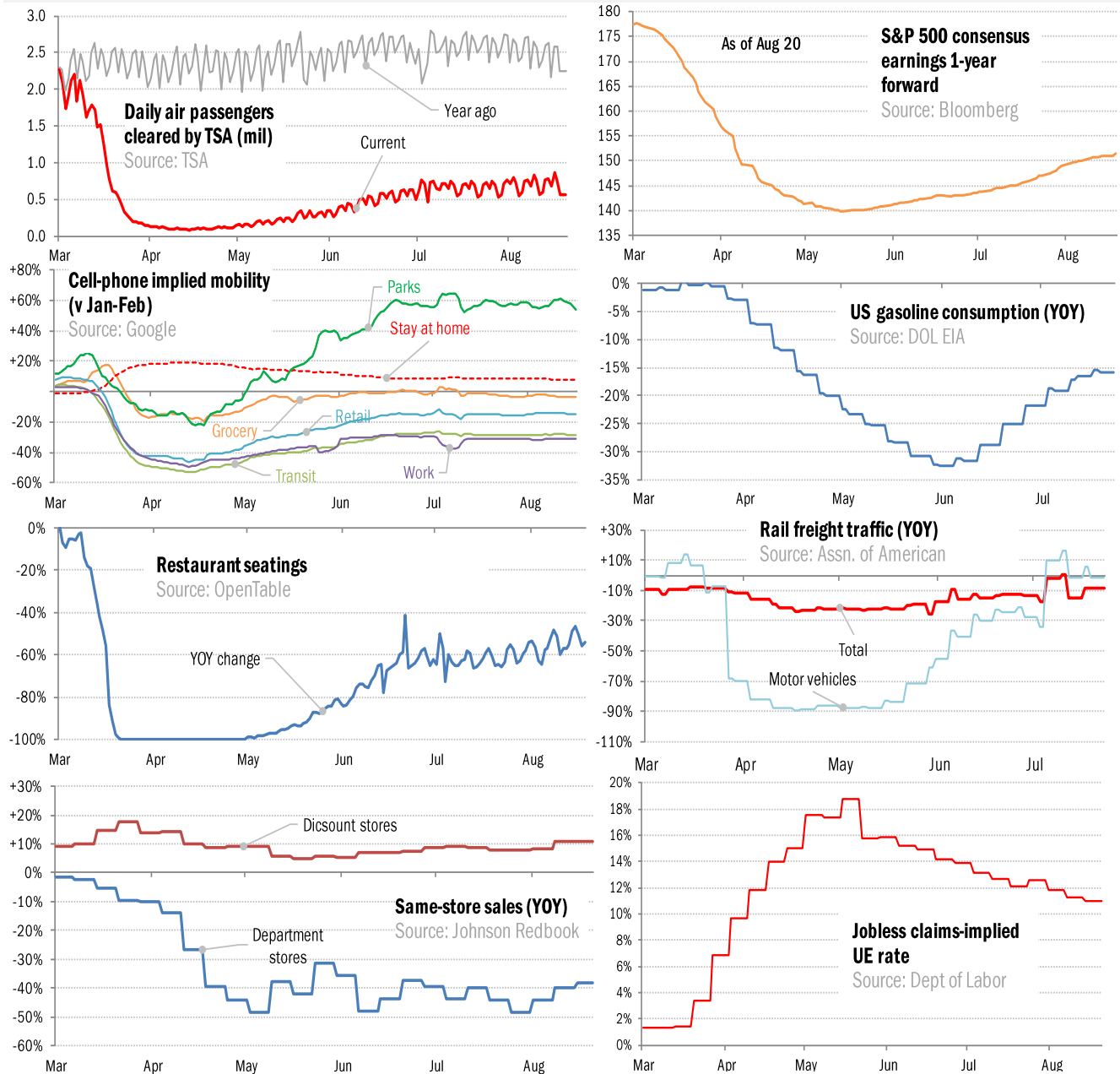


Data Insights: High-Frequency Post-Virus US Recovery Monitor

Thursday, August 20, 2020

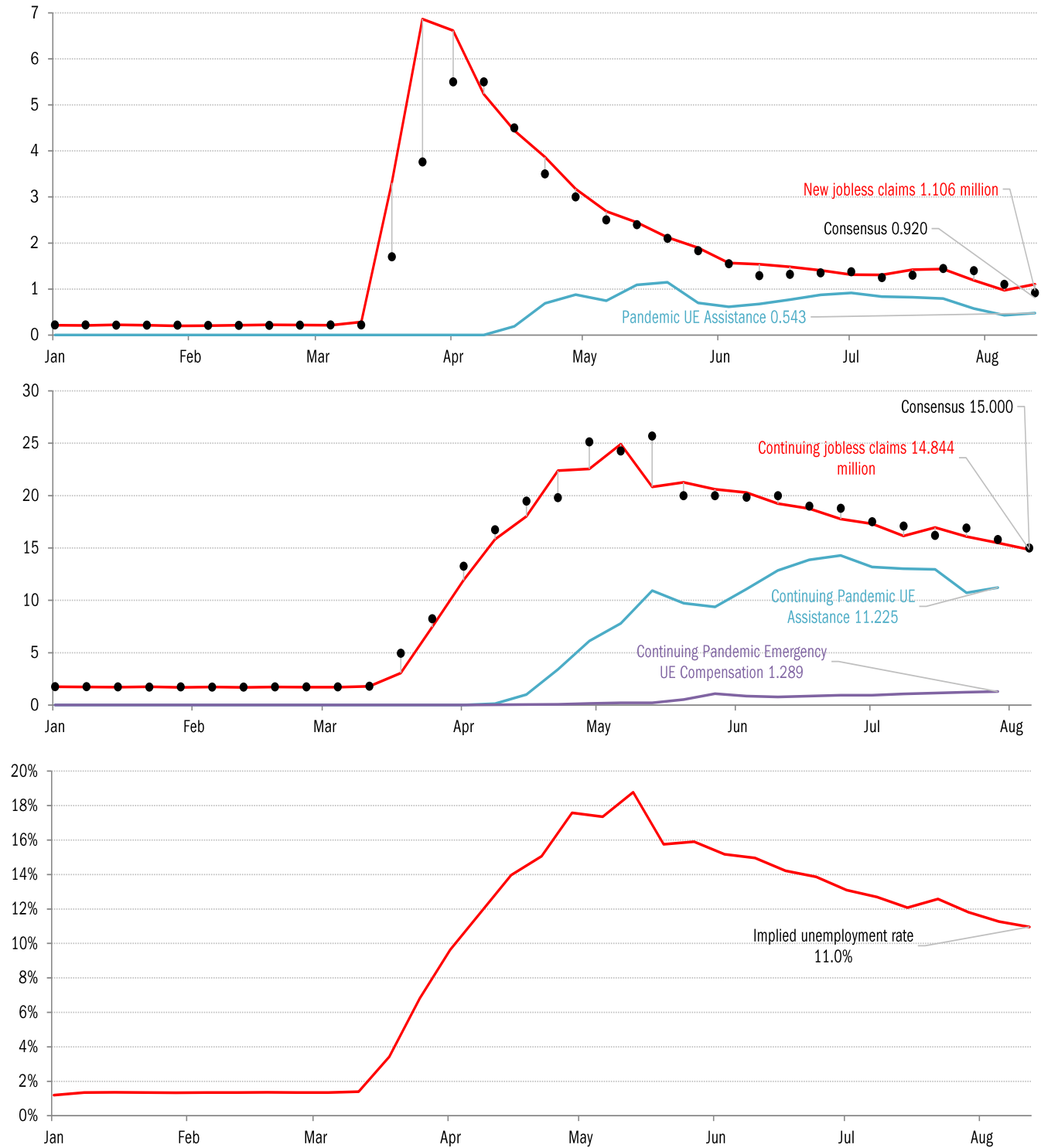
The US high-frequency macro data dashboard

(state level and other detail in subsequent charts)



Source: As indicated, TrendMacro calculations

High-frequency view of the US labor market: weekly unemployment claims (millions)

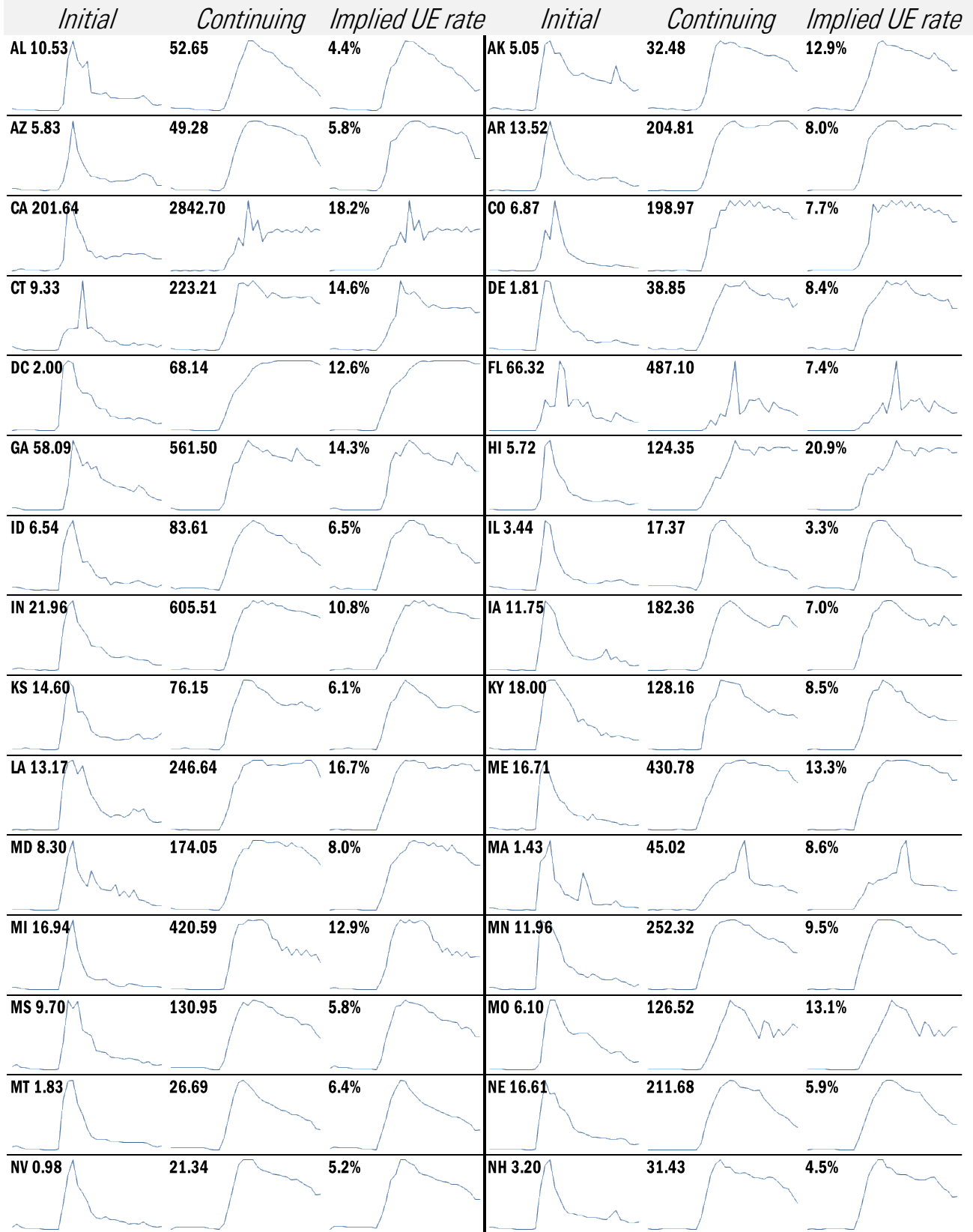


Source: Department of Labor, Bloomberg, TrendMacro calculations

For more information contact us:

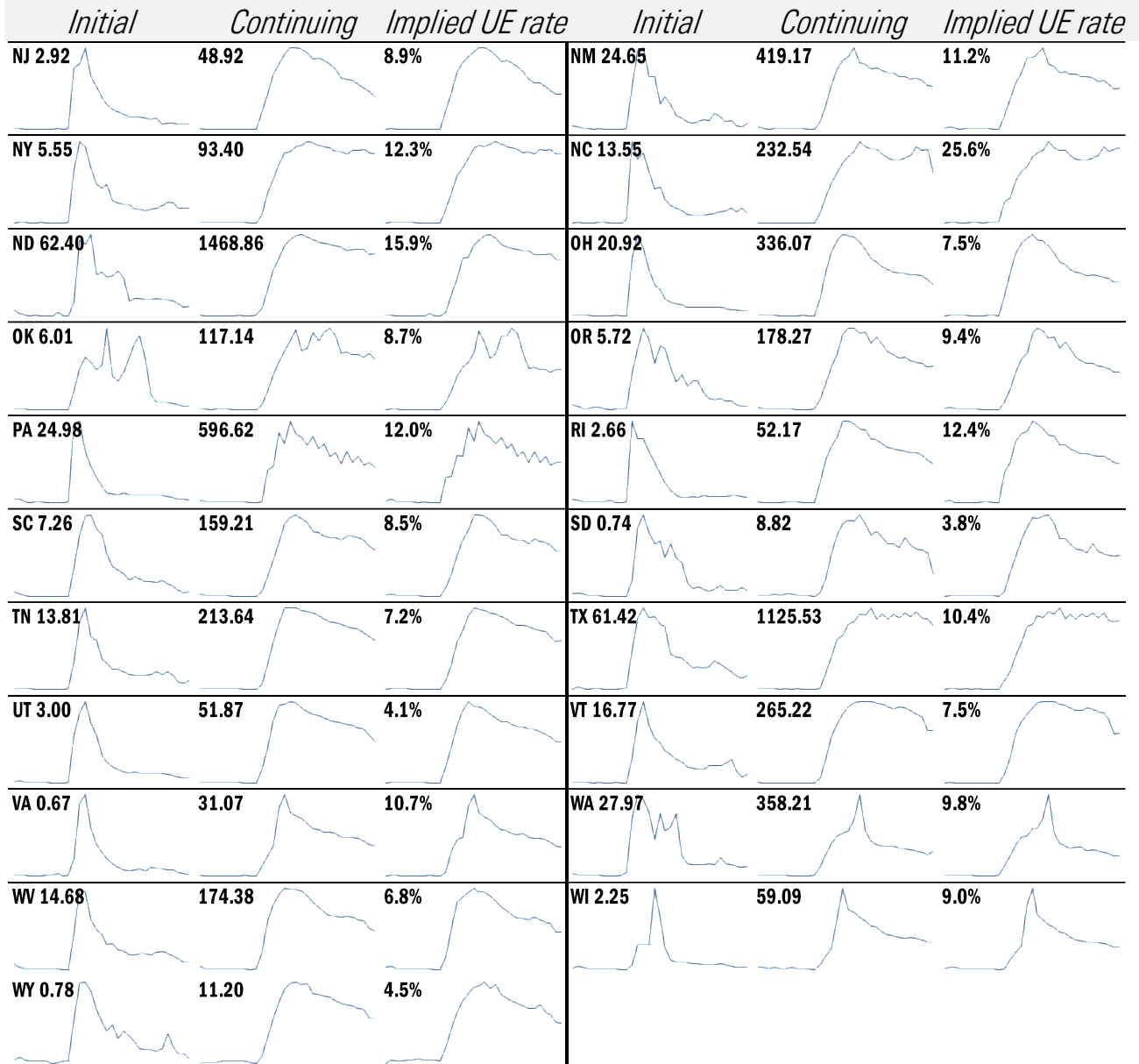
Donald Luskin: 312 273 6766 don@trendmacro.com
 Thomas Demas: 704 552 3625 tdemas@trendmacro.com

State by state unemployment insurance claims (thousands)



Source: Department of Labor, TrendMacro calculations

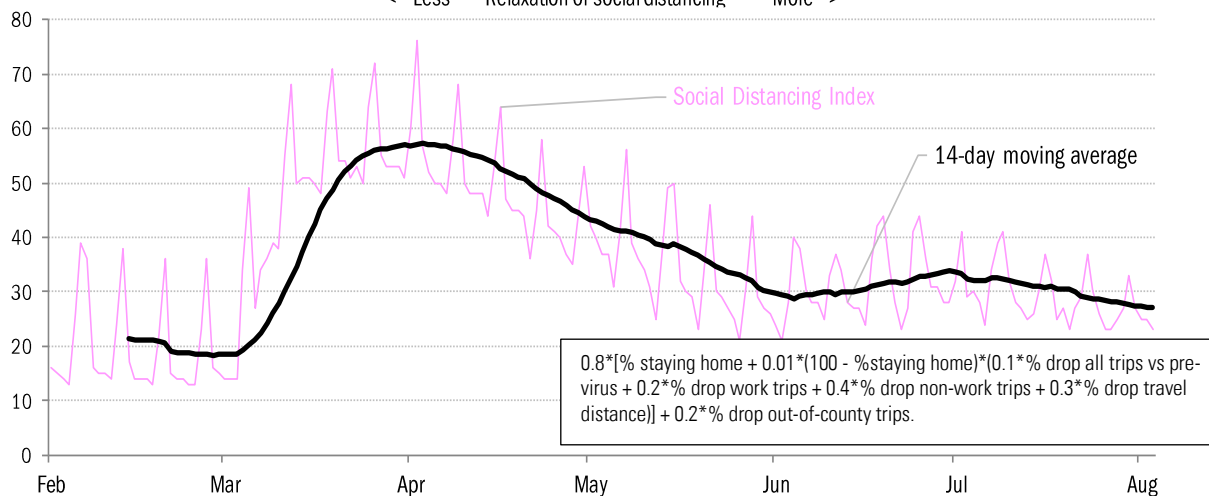
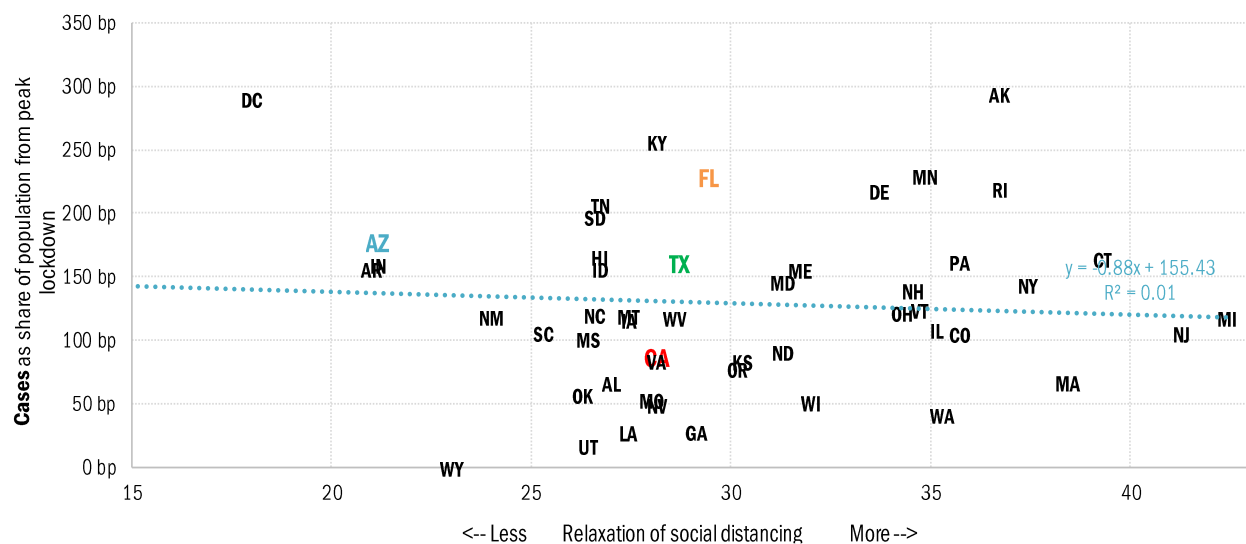
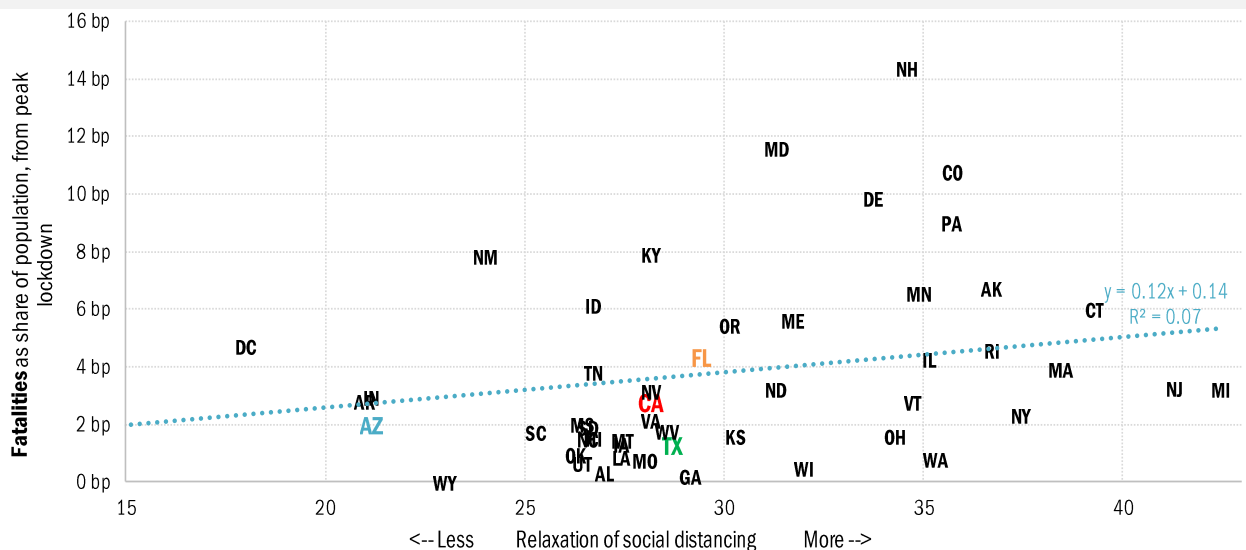
State by state unemployment insurance claims (thousands)



Source: Department of Labor, TrendMacro calculations

Assessing the risk of a "second wave" after opening up the US economy

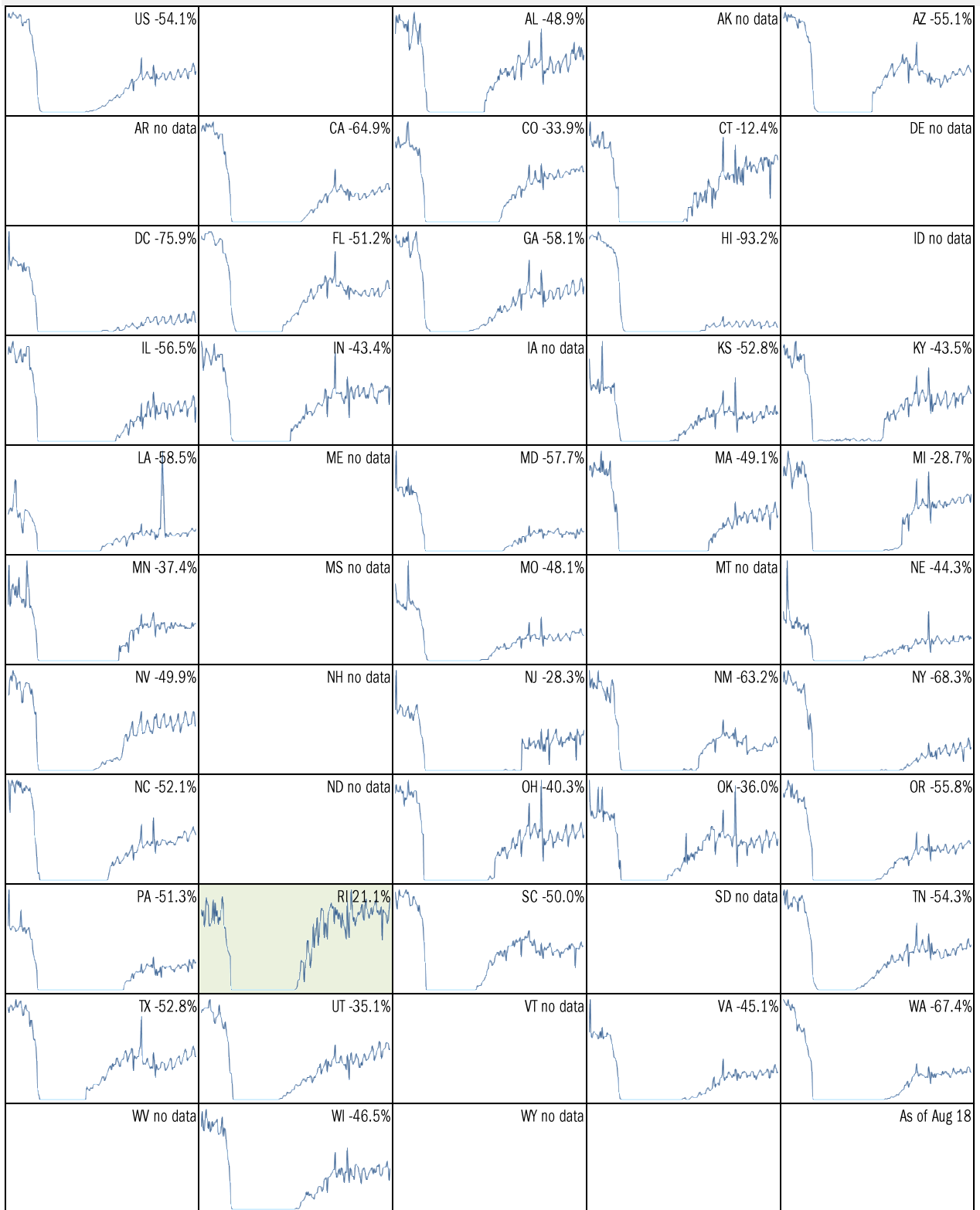
Covid-2019 fatalities and cases vs social distancing measured by cell-phone data



Source: [University of Maryland COVID-19 Impact Analysis Platform](#), TrendMacro calculations

Make America eat again:

YOY change in seated diners in restaurants Feb 18 to present ■ Positive



Source: [Open Table](#), TrendMacro calculations

Make America move again: Mobility from Feb 5 vs Jan 3 – Feb 6 baseline ■ Positive

	<i>Retail/rec</i>	<i>Grocery/pharm</i>	<i>Parks</i>	<i>Transit stations</i>	<i>Workplaces</i>	<i>Time at home</i>
US -15		-4	54	-29	-31	8
AL -9		-1	34	-1	-25	6
AK +8		13	190	5	-23	4
AZ -25		-13	-20	-31	-35	10
AR -4		2	84	0	-25	5
CA -29		-9	11	-40	-37	11
CO -10		1	98	-25	-32	7
CT -9		-5	99	-19	-31	7
DE -3		1	64	-17	-30	8
DC -49		-23	-39	-67	-50	16
FL -24		-15	-19	-42	-32	9
GA -12		-5	32	-30	-31	8
HI -38		-24	-54	-61	-34	13
ID +3		14	165	20	-26	3
IL -10		-1	104	-29	-31	7

Source: [Google Mobility Reports](#), TrendMacro calculations

Make America move again: Mobility from Feb 5 vs Jan 3 – Feb 6 baseline ■ Positive

	<i>Retail/rec</i>	<i>Grocery/pharm</i>	<i>Parks</i>	<i>Transit stations</i>	<i>Workplaces</i>	<i>Residential</i>
IN -2		3	162	5	-24	4
IA +3		22	195	11	-27	-1
KS -5		-4	125	7	-26	5
KY -10		3	107	-6	-27	6
LA -15		-3	-2	-20	-28	7
ME +11		18	316	27	-24	4
MD -15		-7	80	-38	-36	11
MA -15		-8	98	-45	-36	10
MI -6		1	266	-11	-29	5
MN -8		0	167	-34	-30	7
MS -7		-2	23	3	-25	5
MO -3		3	101	-8	-25	5
MT +10		25	228	35	-22	1
NE -1		5	144	9	-25	5
NV -19		-5	-15	-33	-34	9

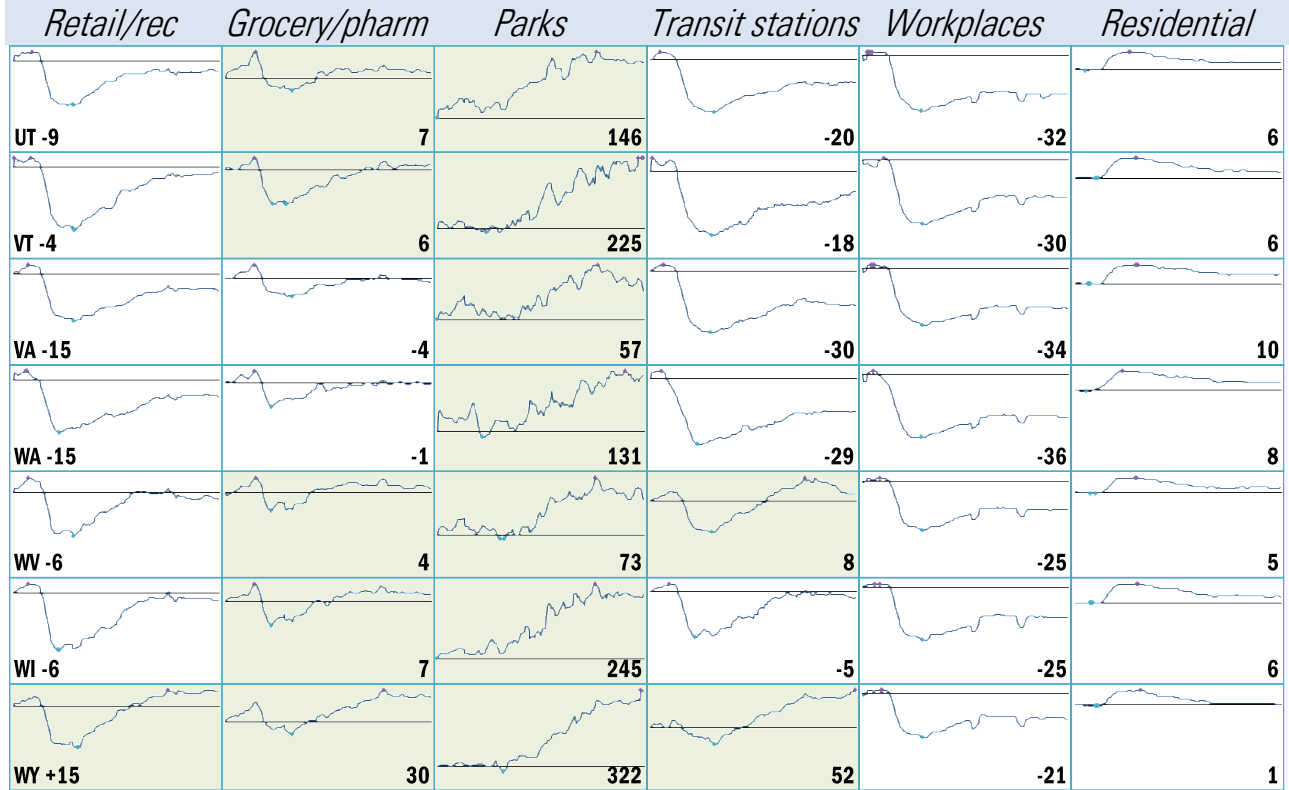
Source: [Google Mobility Reports](#), TrendMacro calculations

Make America move again: Mobility from Feb 5 vs Jan 3 – Feb 6 baseline ■ Positive

	<i>Retail/rec</i>	<i>Grocery/pharm</i>	<i>Parks</i>	<i>Transit stations</i>	<i>Workplaces</i>	<i>Residential</i>
NH +2						
		7	213	-5	-27	6
NJ -18						
		-3	117	-37	-34	10
NM -16						
		-4	32	-11	-31	8
NY -23						
		-6	66	-43	-35	9
NC -12						
		-2	56	-23	-29	7
ND -0						
		3	177	2	-21	3
OH -8						
		0	173	-3	-27	6
OK -5						
		3	59	2	-25	5
OR -11						
		2	136	-18	-32	6
PA -11						
		-2	109	-27	-31	7
RI -7						
		-6	238	-36	-32	8
SC -8						
		-1	43	-1	-26	6
SD +26						
		43	408	55	-20	3
TN -8						
		0	76	-10	-26	6
TX -17						
		-8	2	-26	-33	10

Source: [Google Mobility Reports](https://www.google.com/covid19/mobility/), TrendMacro calculations

Make America move again: Mobility from Feb 5 vs Jan 3 – Feb 6 baseline ■ Positive



Source: [Google Mobility Reports](https://www.google.com/covid19/mobility/), TrendMacro calculations