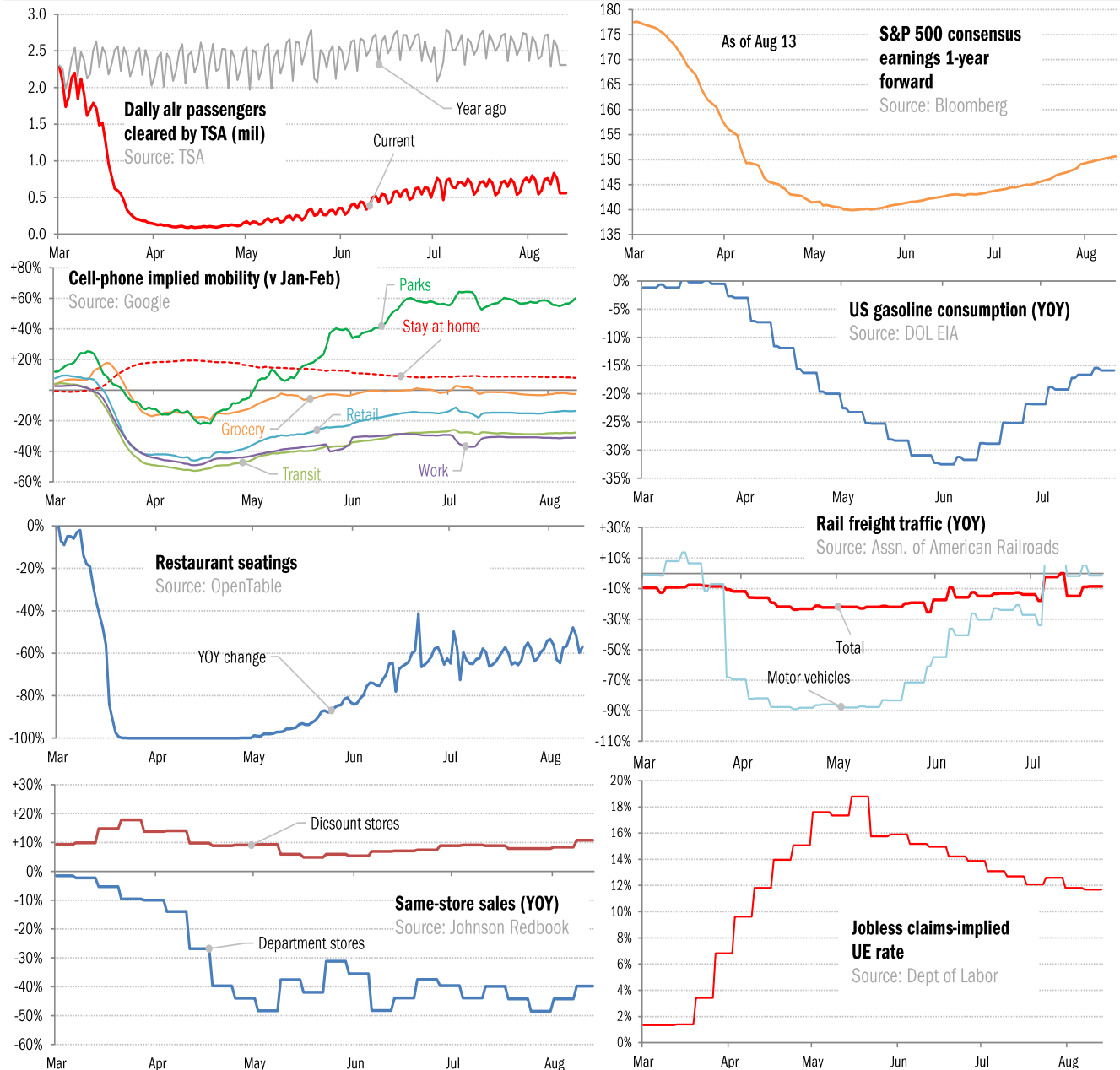


## Data Insights: High-Frequency Post-Virus US Recovery Monitor

Thursday, August 13, 2020

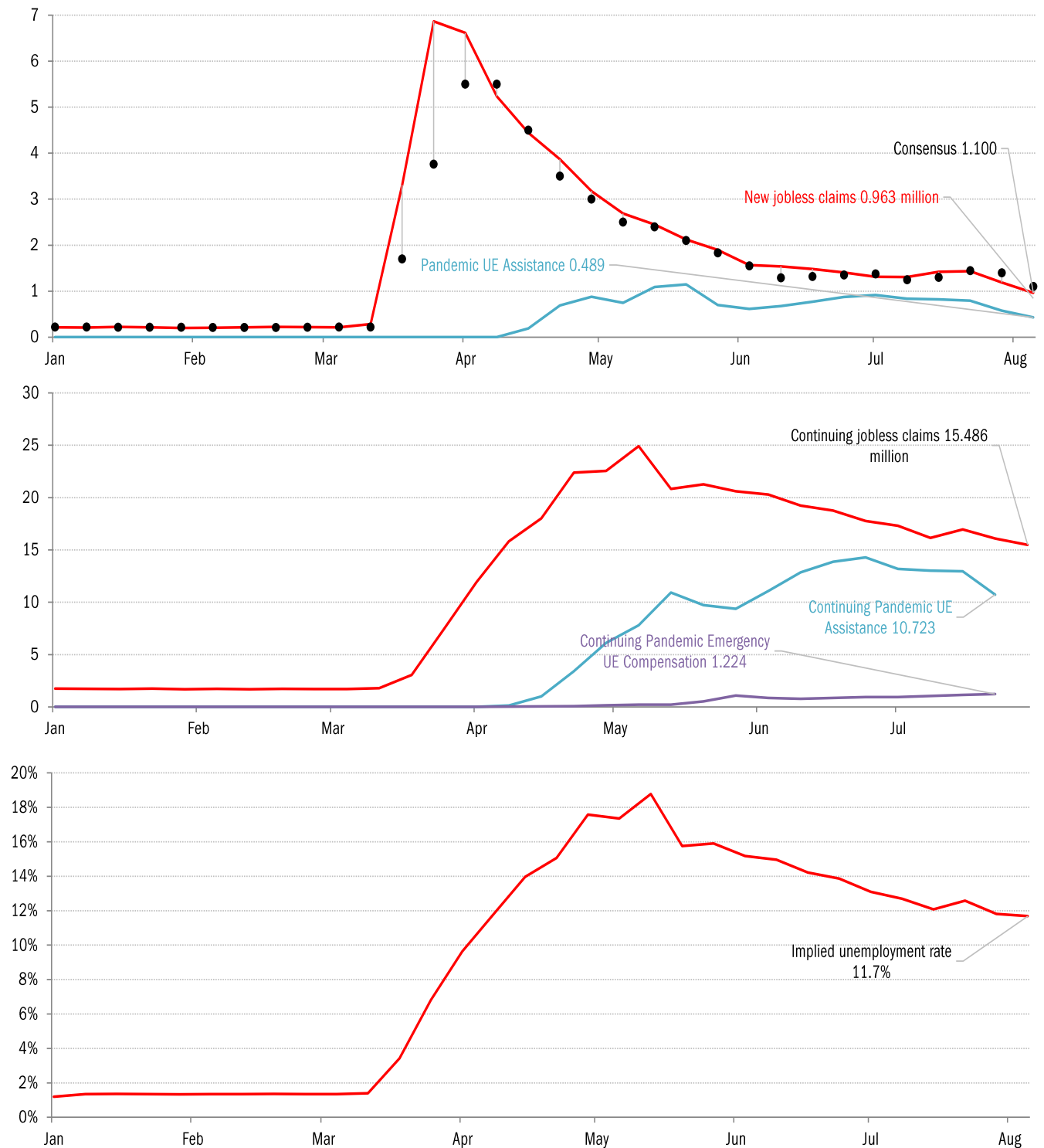
### The US high-frequency macro data dashboard

(state level and other detail in subsequent charts)



Source: As indicated, TrendMacro calculations

## High-frequency view of the US labor market: weekly unemployment claims (millions)

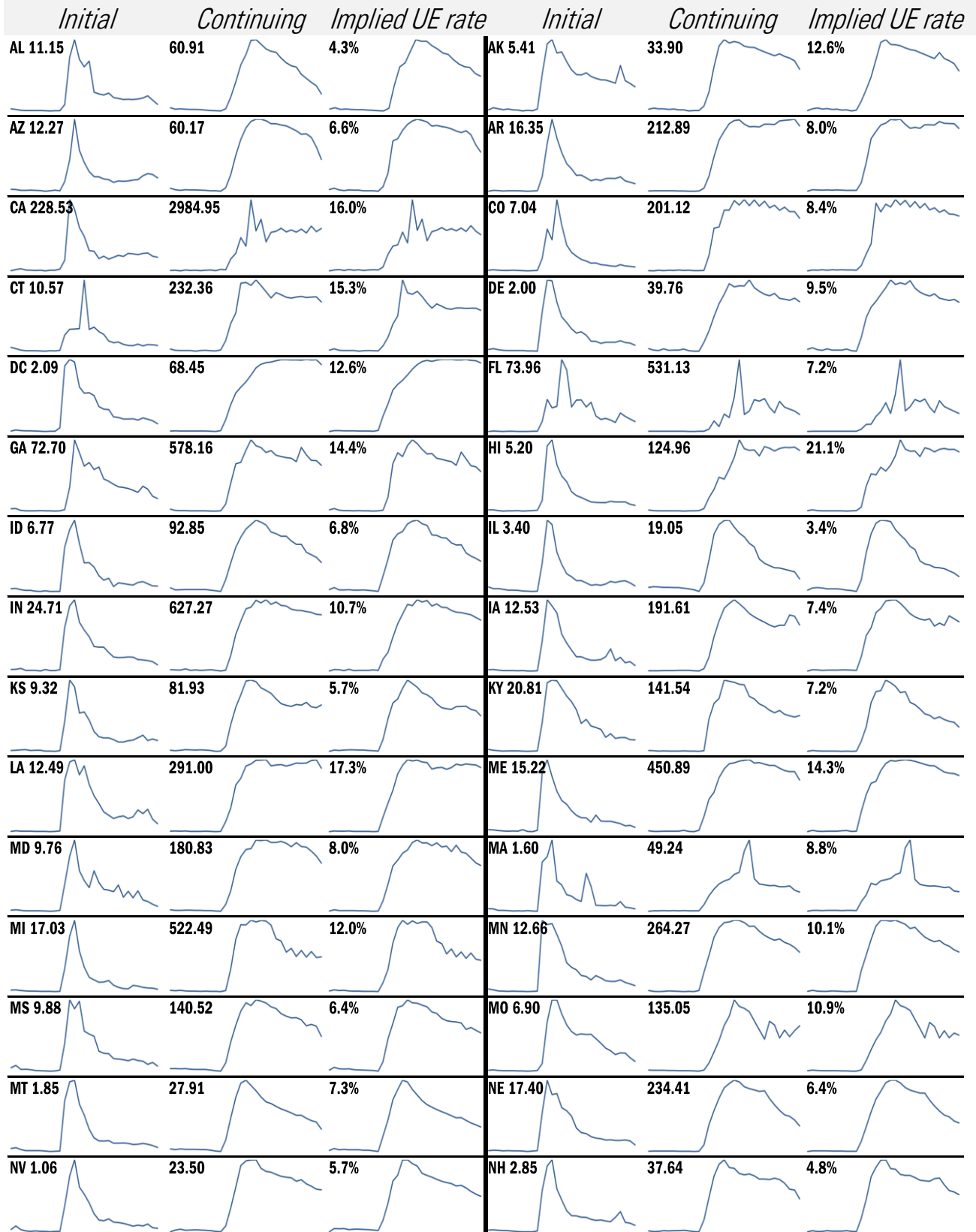


Source: Department of Labor, Bloomberg, TrendMacro calculations

### For more information contact us:

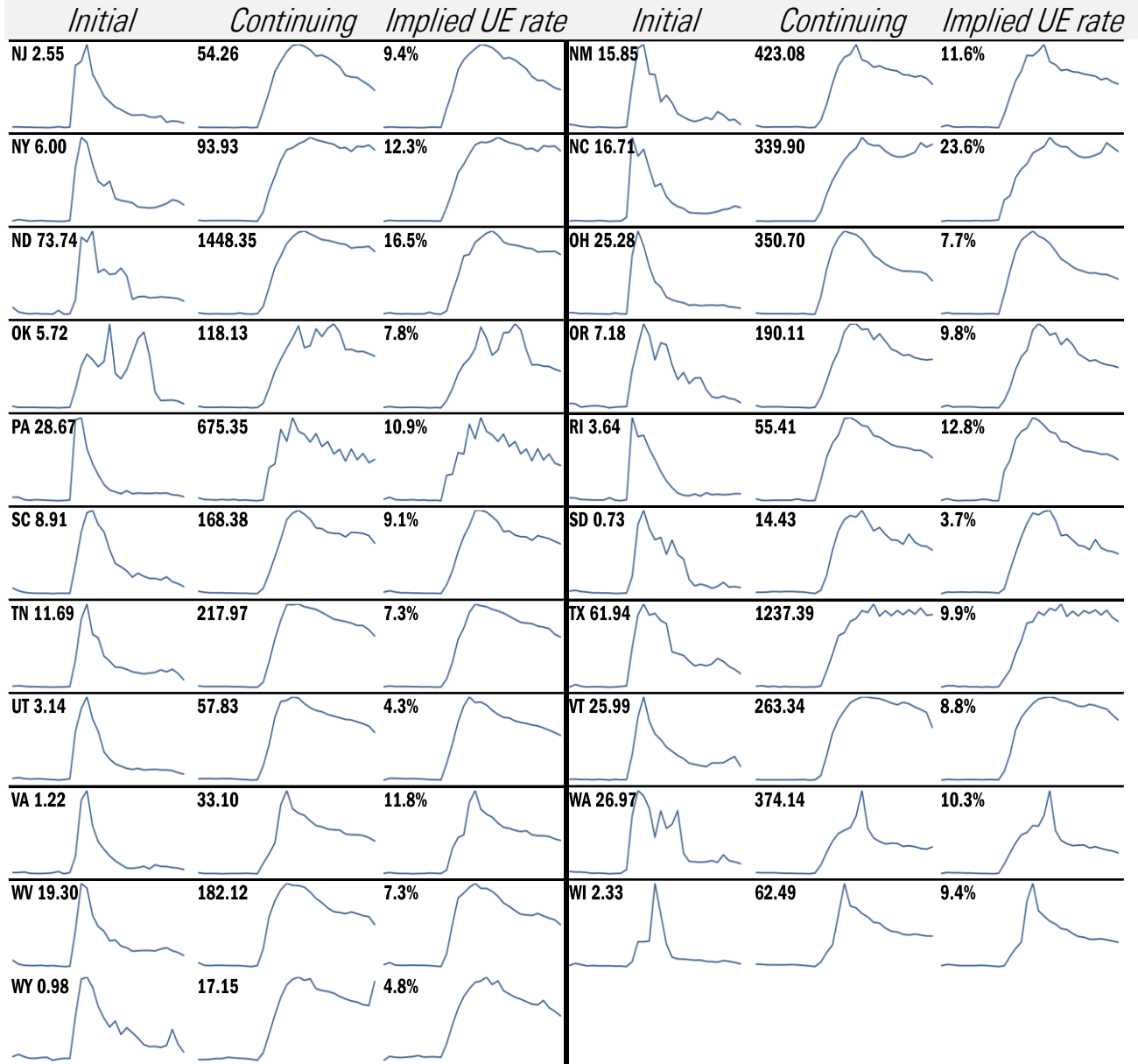
Donald Luskin: 312 273 6766 [don@trendmacro.com](mailto:don@trendmacro.com)  
 Thomas Demas: 704 552 3625 [tdemas@trendmacro.com](mailto:tdemas@trendmacro.com)

# State by state unemployment insurance claims (thousands)



Source: Department of Labor, TrendMacro calculations

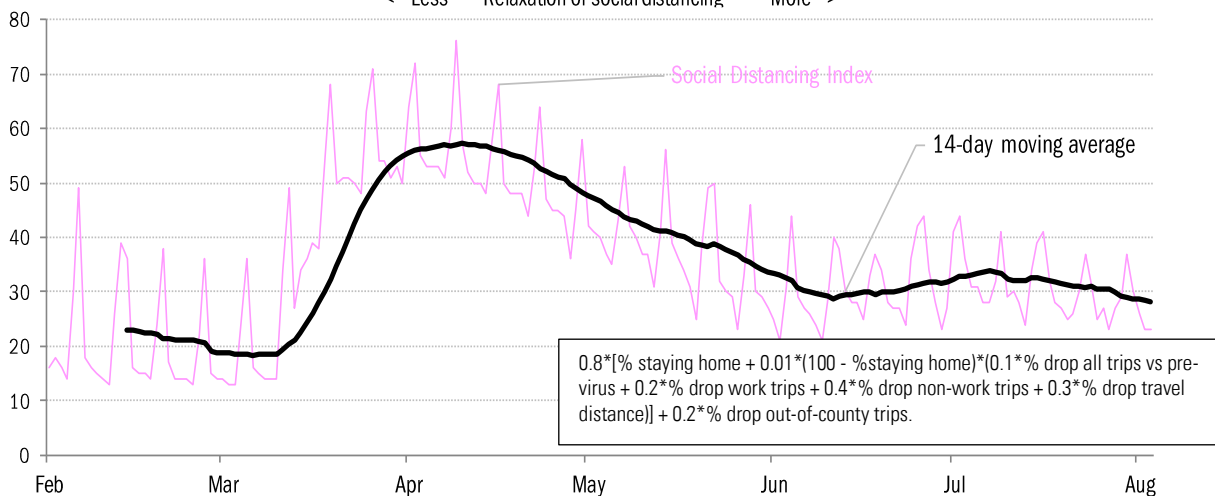
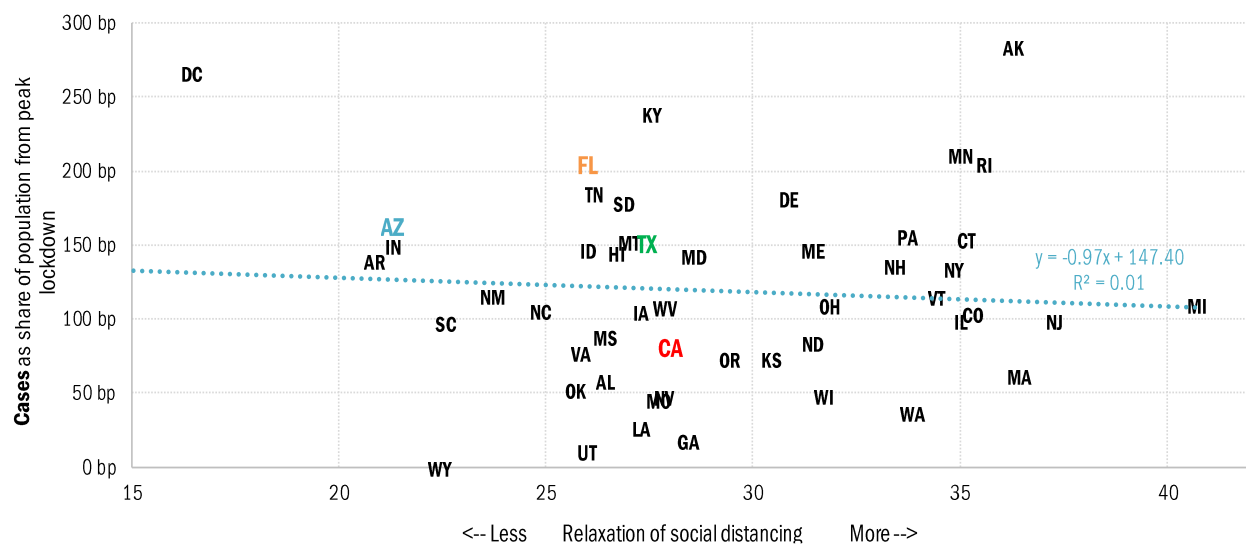
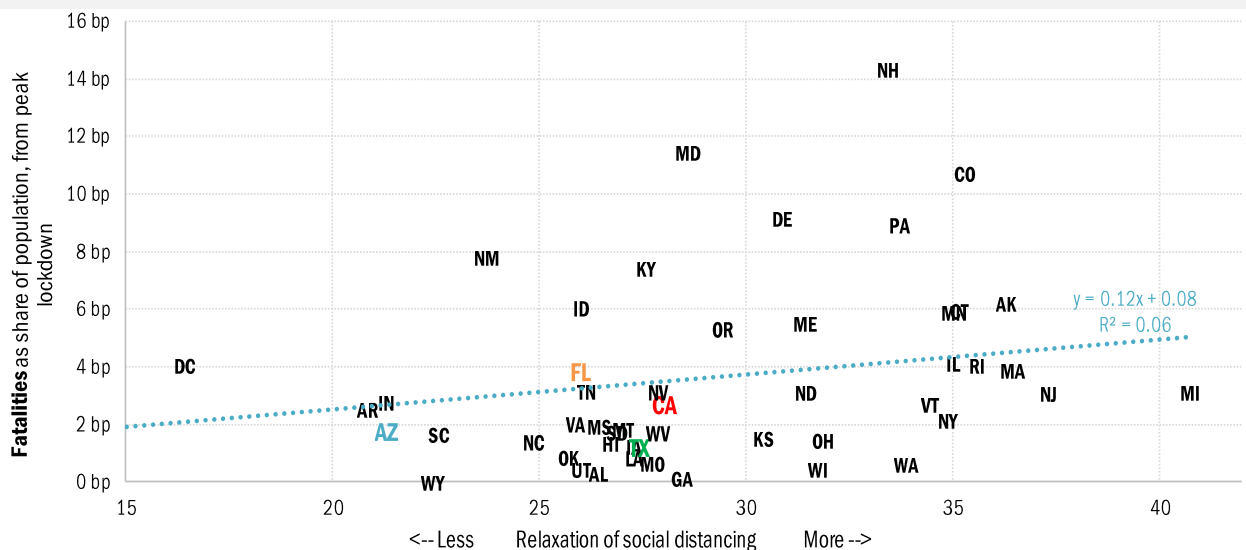
# State by state unemployment insurance claims (thousands)



Source: Department of Labor, TrendMacro calculations

# Assessing the risk of a "second wave" after opening up the US economy

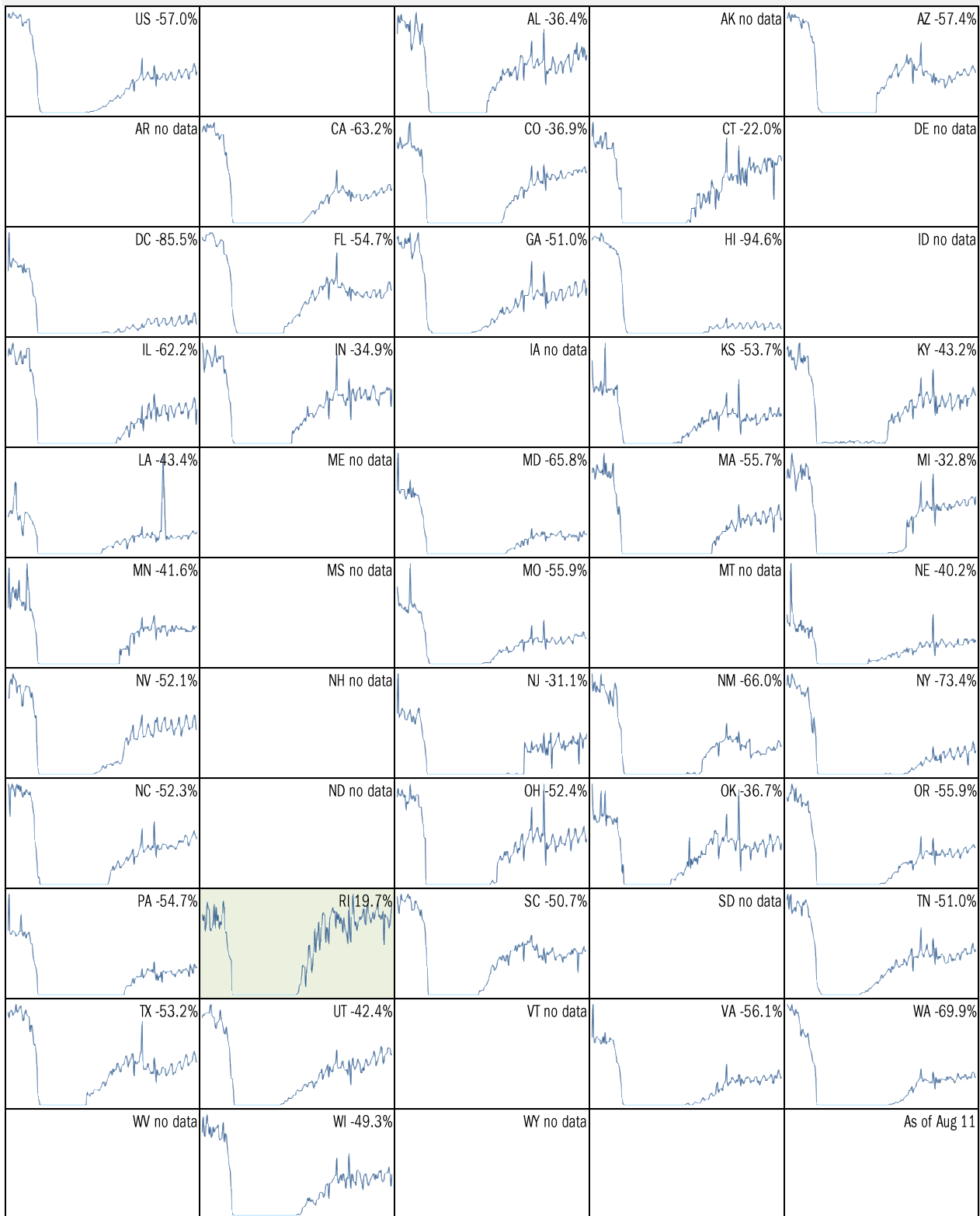
## Covid-2019 fatalities and cases vs social distancing measured by cell-phone data



Source: [University of Maryland COVID-19 Impact Analysis Platform](#), TrendMacro calculations

# Make America eat again:

YOY change in seated diners in restaurants Feb 18 to present ■ Positive



Source: [Open Table](#), TrendMacro calculations

Make America move again: Mobility from Feb 5 vs Jan 3 – Feb 6 baseline ■ Positive

	<i>Retail/rec</i>	<i>Grocery/pharm</i>	<i>Parks</i>	<i>Transit stations</i>	<i>Workplaces</i>	<i>Time at home</i>
<b>US -14</b>		-3	60	-28	-31	8
<b>AL -7</b>		3	48	2	-25	6
<b>AK +9</b>		16	178	5	-23	5
<b>AZ -23</b>		-11	-16	-30	-35	10
<b>AR -3</b>		5	106	2	-25	5
<b>CA -28</b>		-7	16	-38	-36	11
<b>CO -9</b>		3	108	-24	-32	7
<b>CT -5</b>		-1	108	-18	-33	4
<b>DE -3</b>		2	70	-17	-30	8
<b>DC -48</b>		-22	-34	-67	-50	16
<b>FL -24</b>		-15	-19	-42	-32	9
<b>GA -11</b>		-4	43	-30	-31	8
<b>HI -36</b>		-20	-43	-60	-33	12
<b>ID +4</b>		17	170	21	-26	3
<b>IL -10</b>		0	119	-28	-30	7

Source: [Google Mobility Reports](#), TrendMacro calculations

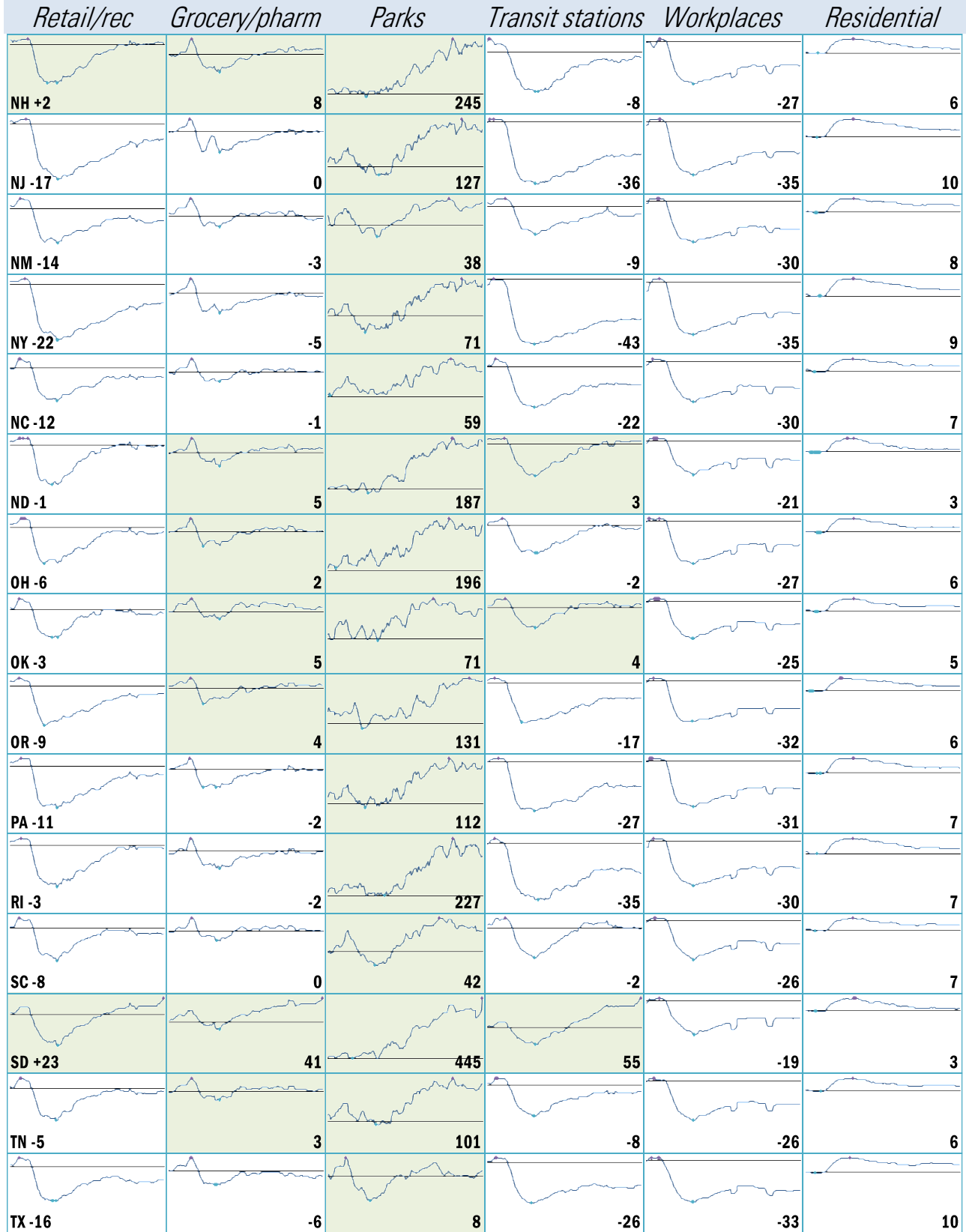
Make America move again: Mobility from Feb 5 vs Jan 3 – Feb 6 baseline ■ Positive

	<i>Retail/rec</i>	<i>Grocery/pharm</i>	<i>Parks</i>	<i>Transit stations</i>	<i>Workplaces</i>	<i>Residential</i>
<b>IN 0</b>		5	189	7	-23	4
<b>IA -2</b>		19	225	5	-24	5
<b>KS -6</b>		0	144	8	-26	5
<b>KY -6</b>		6	140	-2	-26	5
<b>LA -12</b>		0	2	-18	-28	7
<b>ME +11</b>		18	309	26	-24	3
<b>MD -15</b>		-5	96	-39	-36	12
<b>MA -13</b>		-6	112	-44	-35	9
<b>MI -3</b>		3	276	-8	-28	5
<b>MN -8</b>		1	170	-34	-30	7
<b>MS -3</b>		3	37	4	-25	5
<b>MO -1</b>		5	127	-7	-26	5
<b>MT +9</b>		28	231	36	-22	2
<b>NE -2</b>		6	168	10	-25	5
<b>NV -17</b>		-2	-11	-32	-34	9

Source: [Google Mobility Reports](#), TrendMacro calculations

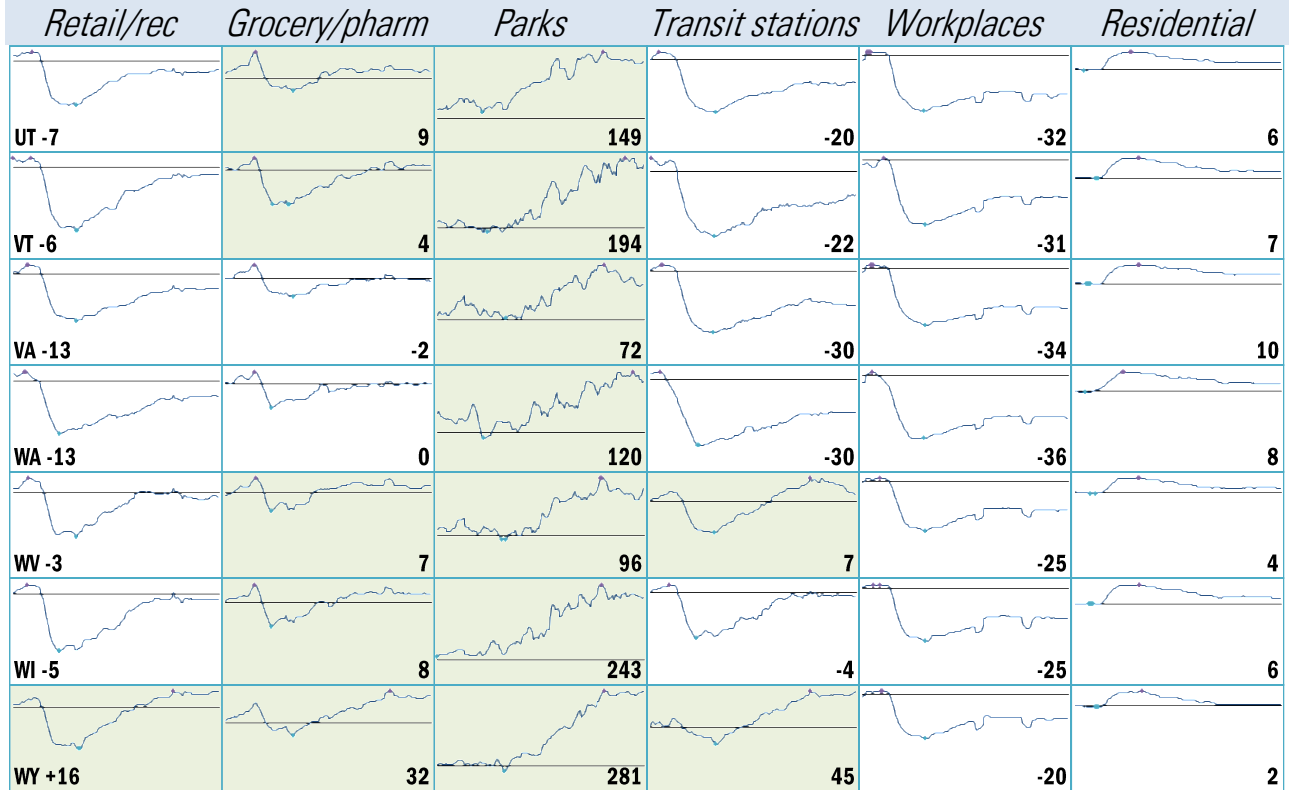


Make America move again: Mobility from Feb 5 vs Jan 3 – Feb 6 baseline ■ Positive



Source: [Google Mobility Reports](#), TrendMacro calculations

Make America move again: Mobility from Feb 5 vs Jan 3 – Feb 6 baseline ■ Positive



Source: [Google Mobility Reports](https://www.google.com/covid19/mobility/), TrendMacro calculations