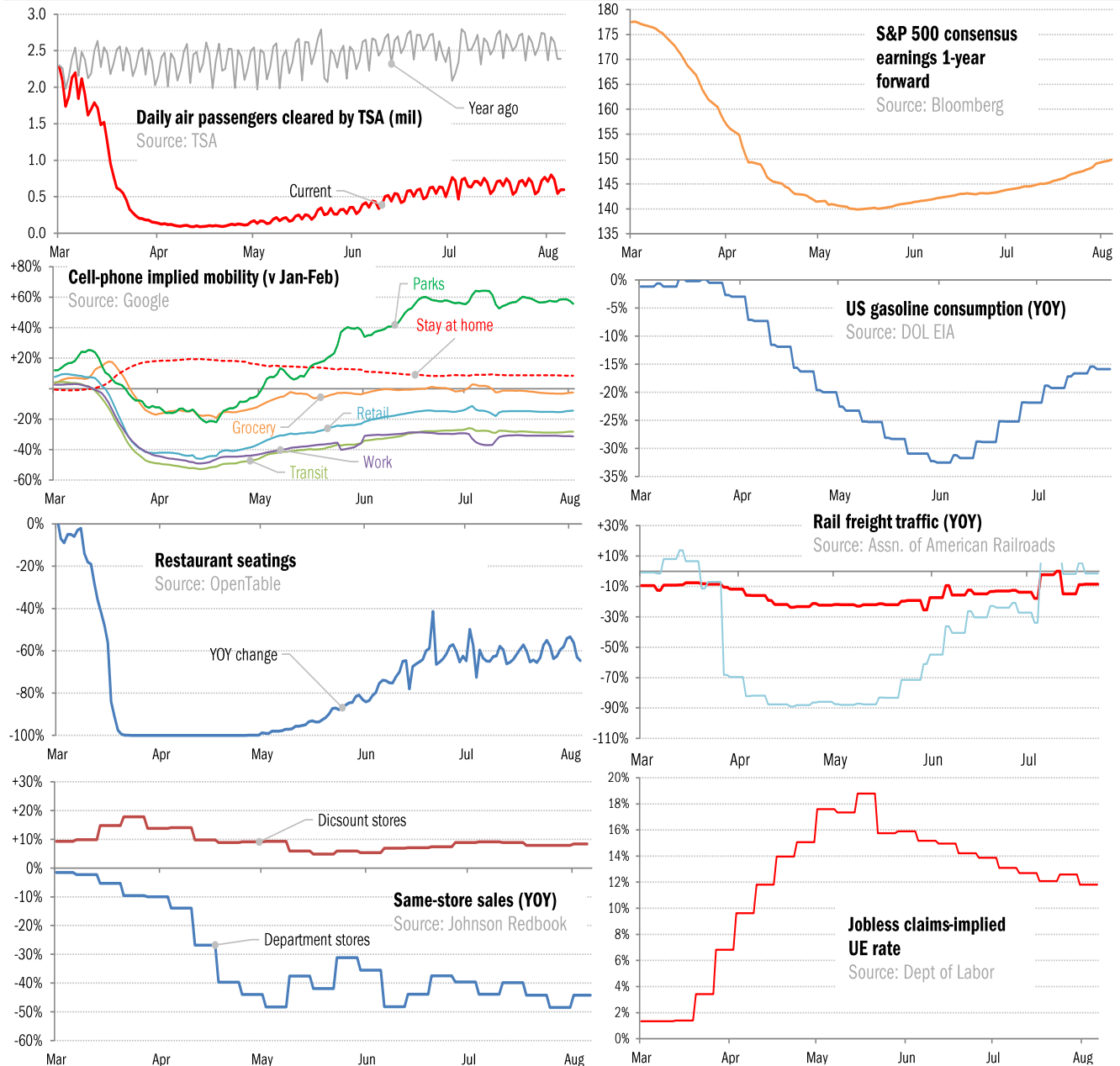


Data Insights: High-Frequency Post-Virus US Recovery Monitor

Thursday, August 6, 2020

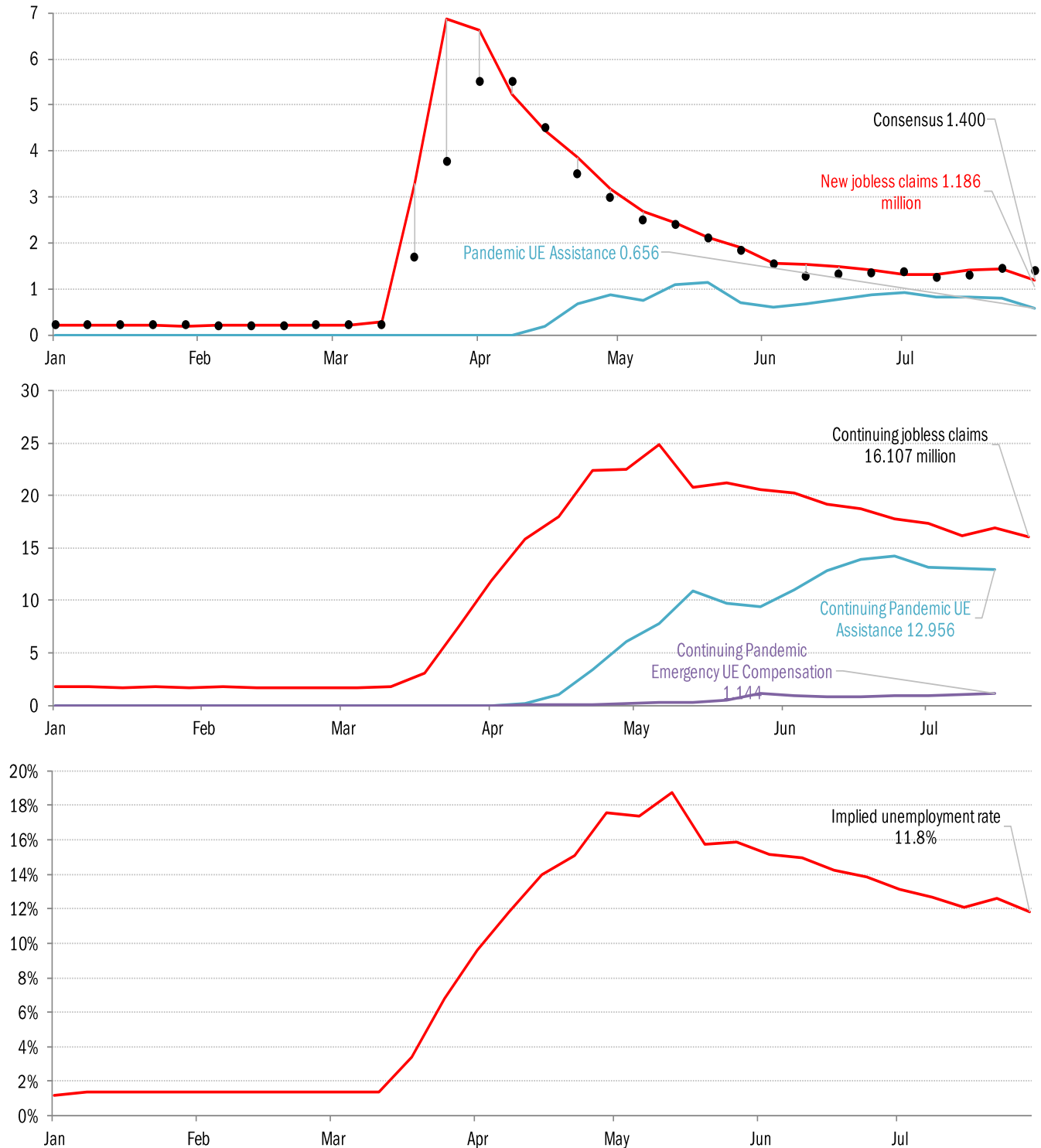
The US high-frequency macro data dashboard

(state level and other detail in subsequent charts)



Source: As indicated, TrendMacro calculations

High-frequency view of the US labor market: weekly unemployment claims (millions)

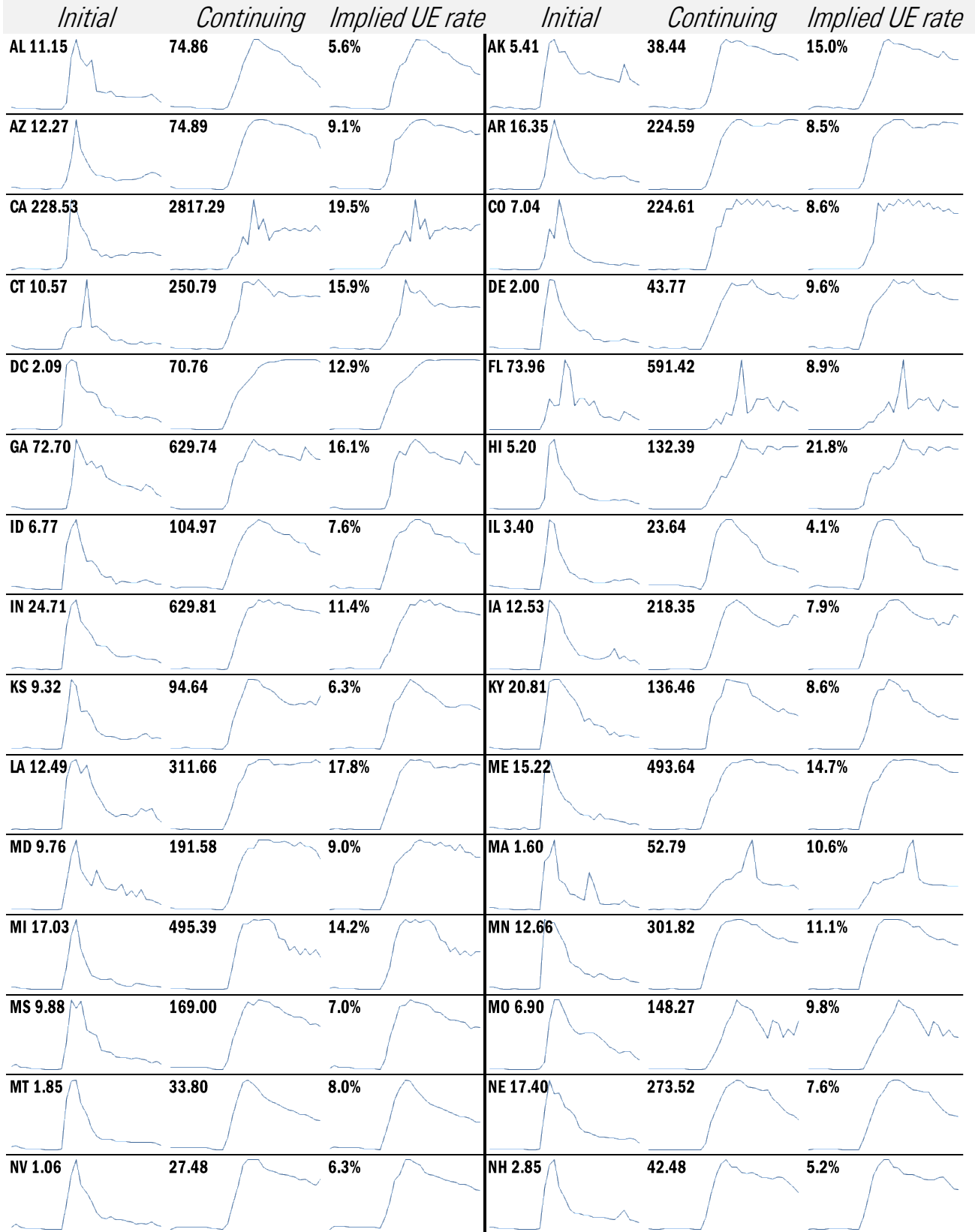


Source: Department of Labor, Bloomberg, TrendMacro calculations

For more information contact us:

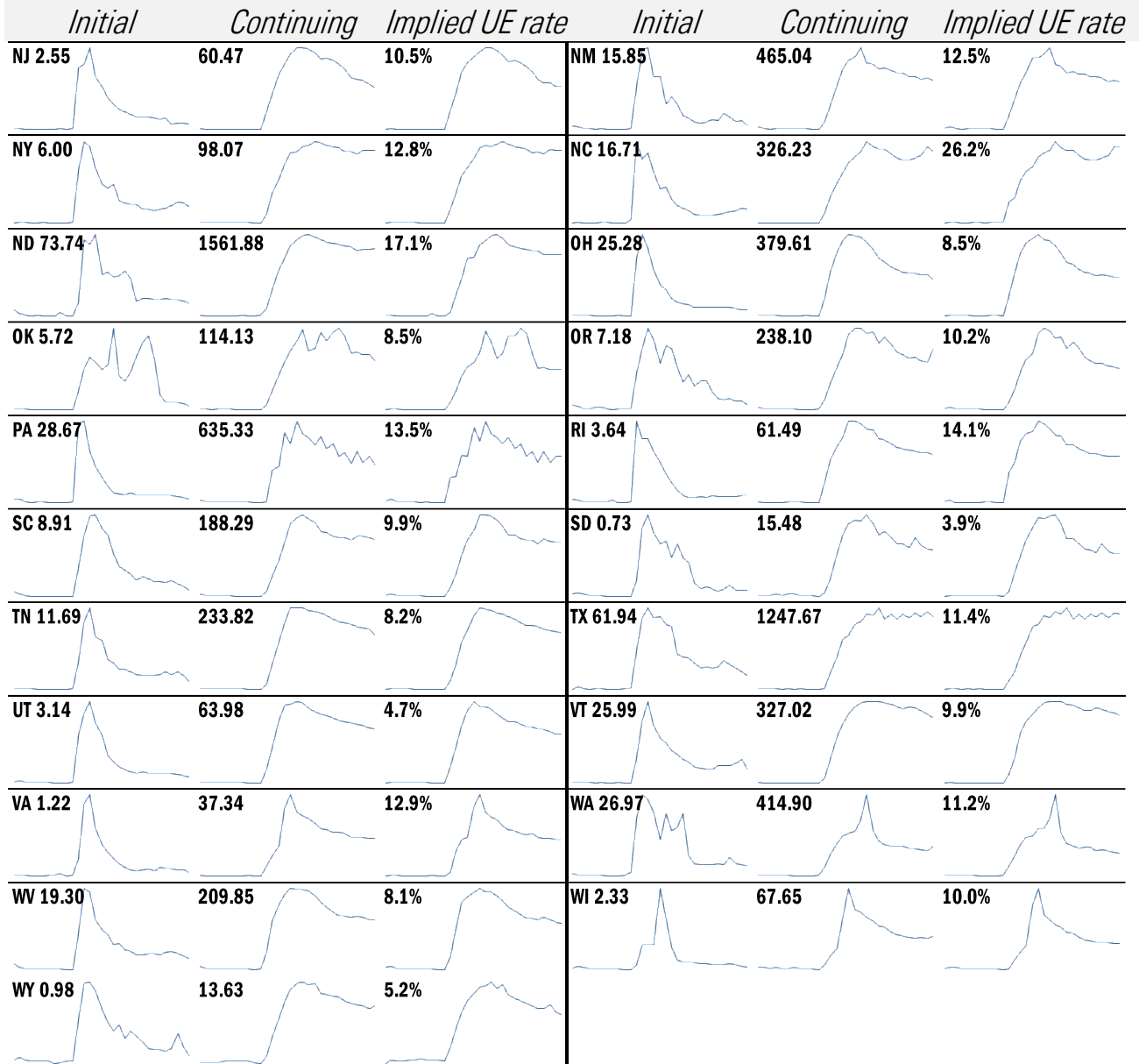
Donald Luskin: 312 273 6766 don@trendmacro.com
 Thomas Demas: 704 552 3625 tdemas@trendmacro.com

State by state unemployment insurance claims (thousands)



Source: Department of Labor, TrendMacro calculations

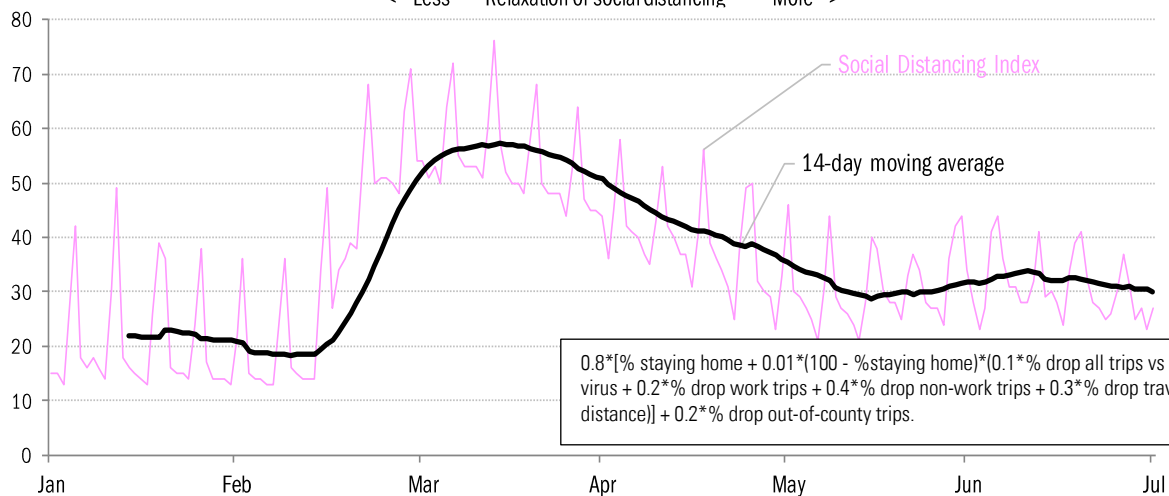
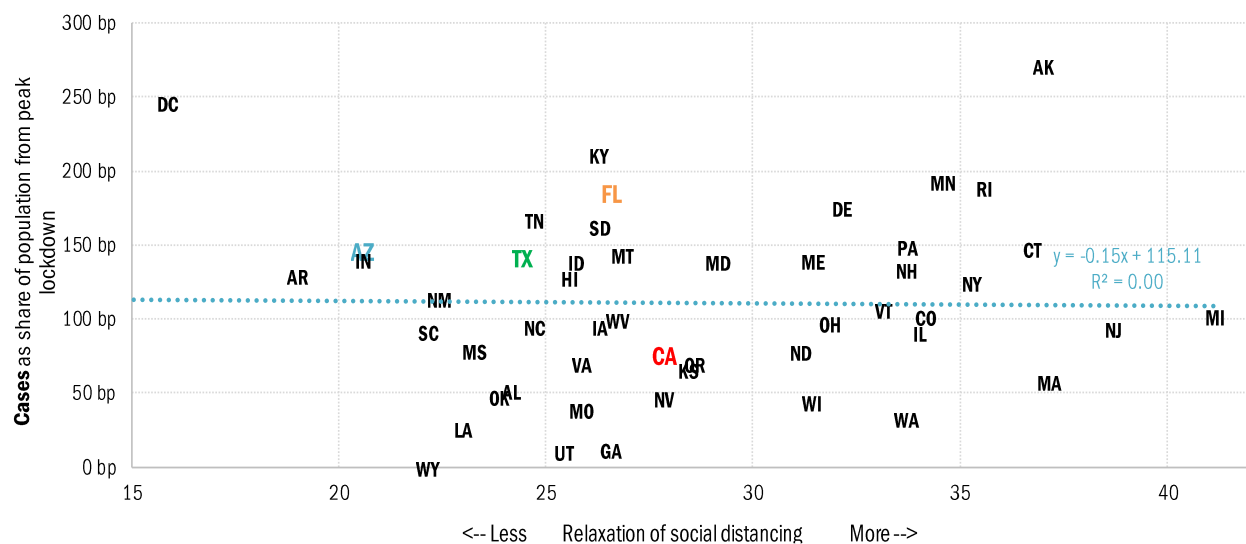
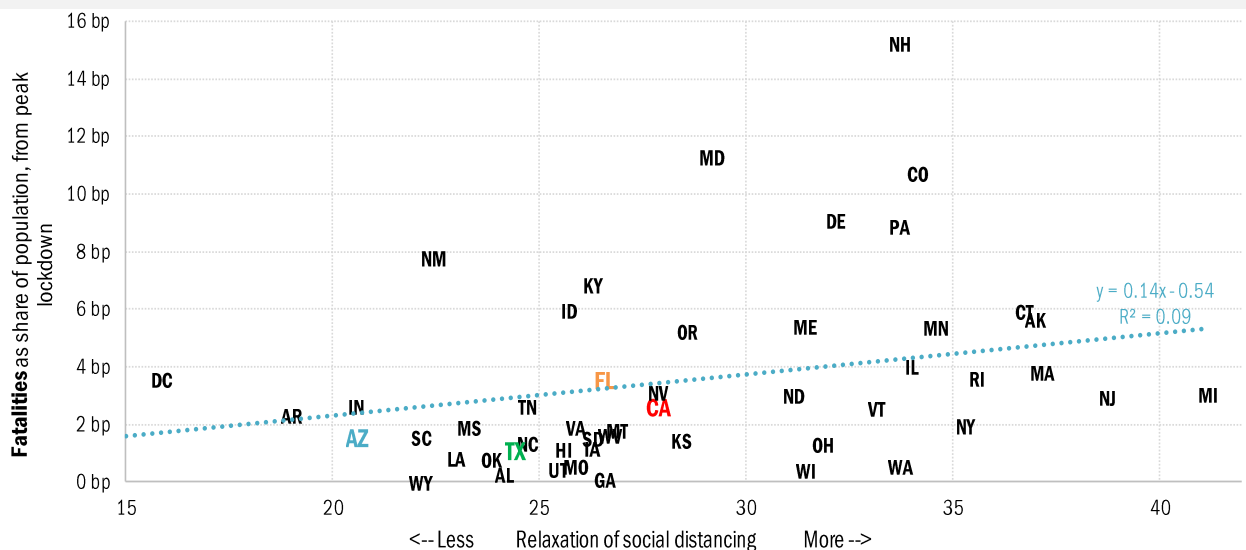
State by state unemployment insurance claims (thousands)



Source: Department of Labor, TrendMacro calculations

Assessing the risk of a "second wave" after opening up the US economy

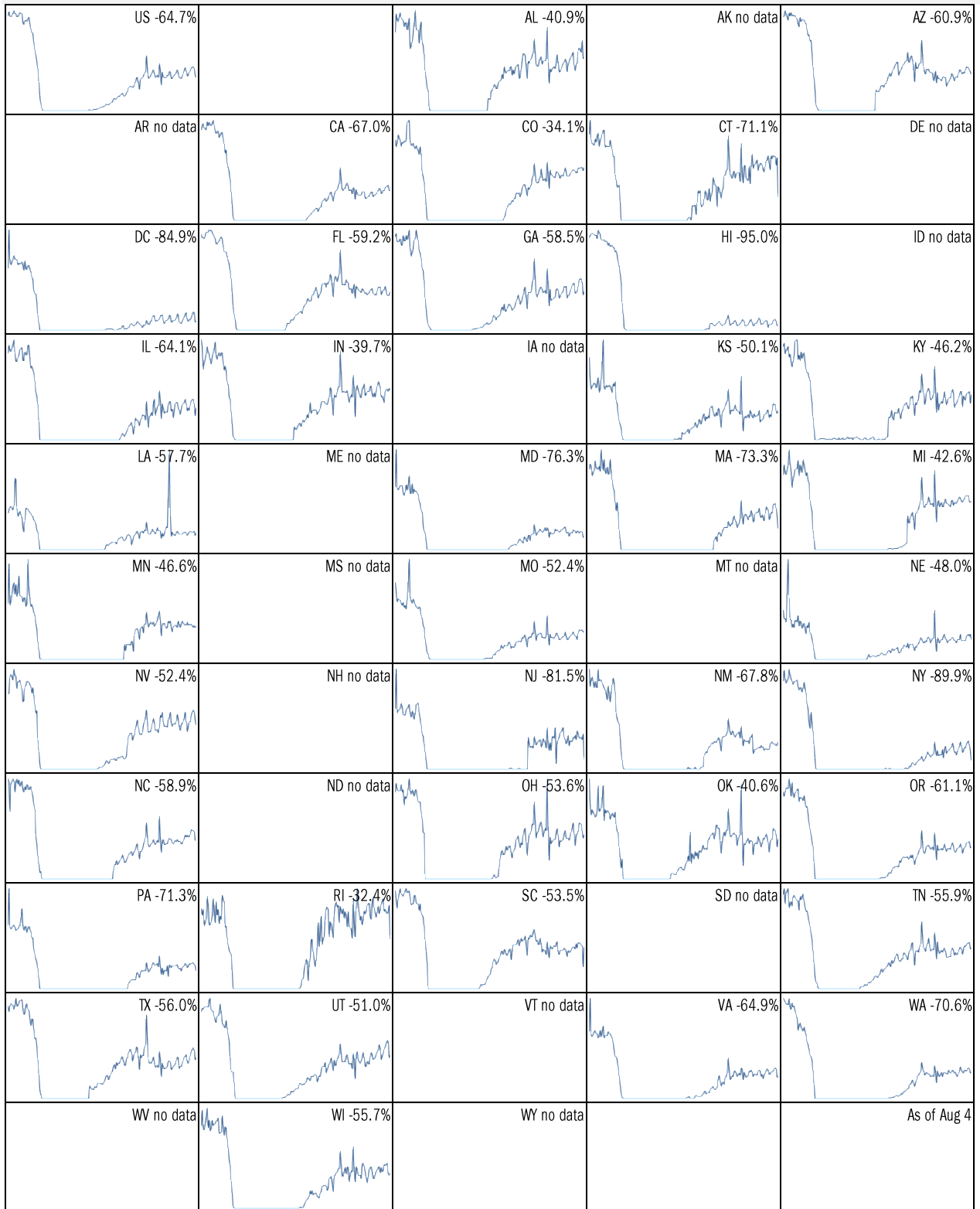
Covid-2019 fatalities and cases vs social distancing measured by cell-phone data



Source: [University of Maryland COVID-19 Impact Analysis Platform](#), TrendMacro calculations

Make America eat again:

YOY change in seated diners in restaurants Feb 18 to present ■ Positive



Source: [Open Table](#), TrendMacro calculations

Make America move again: Mobility from Feb 5 vs Jan 3 – Feb 6 baseline ■ Positive

	<i>Retail/rec</i>	<i>Grocery/pharm</i>	<i>Parks</i>	<i>Transit stations</i>	<i>Workplaces</i>	<i>Time at home</i>
US -14		-3	56	-28	-31	8
AL -8		1	40	2	-26	7
AK +13		17	159	7	-22	4
AZ -23		-11	-19	-30	-35	10
AR -4		4	87	0	-26	6
CA -30		-8	13	-39	-36	12
CO -9		3	105	-26	-32	7
CT -8		-4	115	-20	-31	8
DE -2		4	81	-19	-29	8
DC -48		-21	-32	-66	-49	15
FL -25		-14	-24	-44	-34	10
GA -11		-3	44	-31	-32	8
HI -35		-24	-38	-59	-33	12
ID +2		17	173	19	-26	3
IL -12		-2	102	-29	-31	8

Source: [Google Mobility Reports](#), TrendMacro calculations

Make America move again: Mobility from Feb 5 vs Jan 3 – Feb 6 baseline ■ Positive

	<i>Retail/rec</i>	<i>Grocery/pharm</i>	<i>Parks</i>	<i>Transit stations</i>	<i>Workplaces</i>	<i>Residential</i>
IN -3		3	145	5	-25	6
IA -6		19	229	4	-23	4
KS -8		0	117	8	-26	6
KY -10		3	95	-6	-27	7
LA -14		-2	-7	-19	-29	8
ME +9		16	296	24	-24	4
MD -13		-4	101	-36	-35	11
MA -13		-7	111	-42	-36	10
MI -5		3	249	-11	-29	6
MN -8		2	194	-34	-30	7
MS -3		0	31	4	-26	6
MO -5		3	89	-10	-26	6
MT +8		28	238	32	-22	2
NE -4		6	172	9	-26	5
NV -18		-4	-14	-33	-34	10

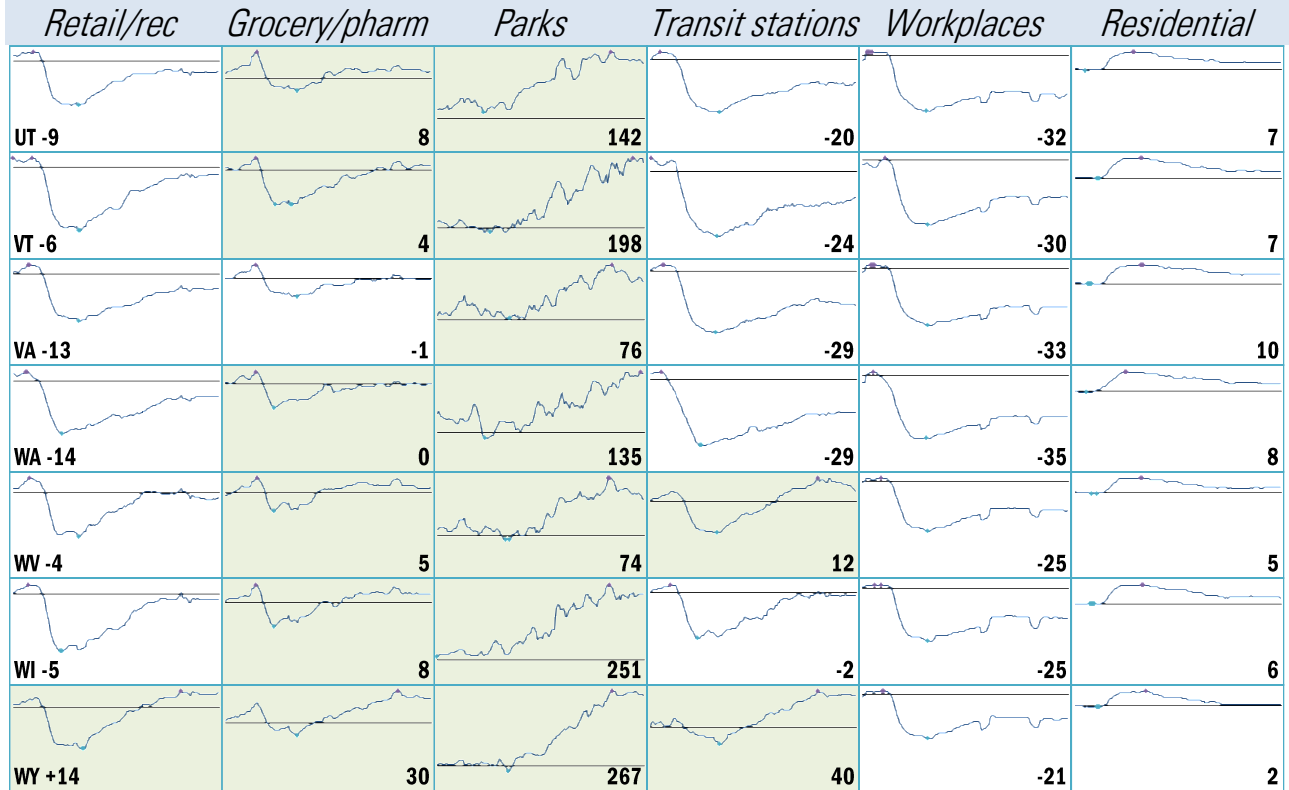
Source: [Google Mobility Reports](#), TrendMacro calculations

Make America move again: Mobility from Feb 5 vs Jan 3 – Feb 6 baseline ■ Positive

	<i>Retail/rec</i>	<i>Grocery/pharm</i>	<i>Parks</i>	<i>Transit stations</i>	<i>Workplaces</i>	<i>Residential</i>
NH +2						
		8	251	-5	-27	6
NJ -17						
		0	137	-37	-34	10
NM -15						
		-4	35	-10	-31	9
NY -22						
		-4	72	-43	-35	9
NC -10						
		1	67	-22	-29	7
ND -1						
		5	177	4	-21	3
OH -8						
		1	146	-5	-28	7
OK -5						
		4	57	3	-26	6
OR -10						
		3	131	-17	-32	7
PA -10						
		-1	108	-28	-31	8
RI -2						
		-3	281	-32	-29	7
SC -6						
		2	51	2	-27	7
SD +13						
		32	297	42	-19	3
TN -5						
		2	85	-9	-27	6
TX -17						
		-8	2	-27	-34	11

Source: [Google Mobility Reports](https://www.google.com/covid19/mobility/), TrendMacro calculations

Make America move again: Mobility from Feb 5 vs Jan 3 – Feb 6 baseline ■ Positive



Source: [Google Mobility Reports](https://www.google.com/covid19/mobility/), TrendMacro calculations