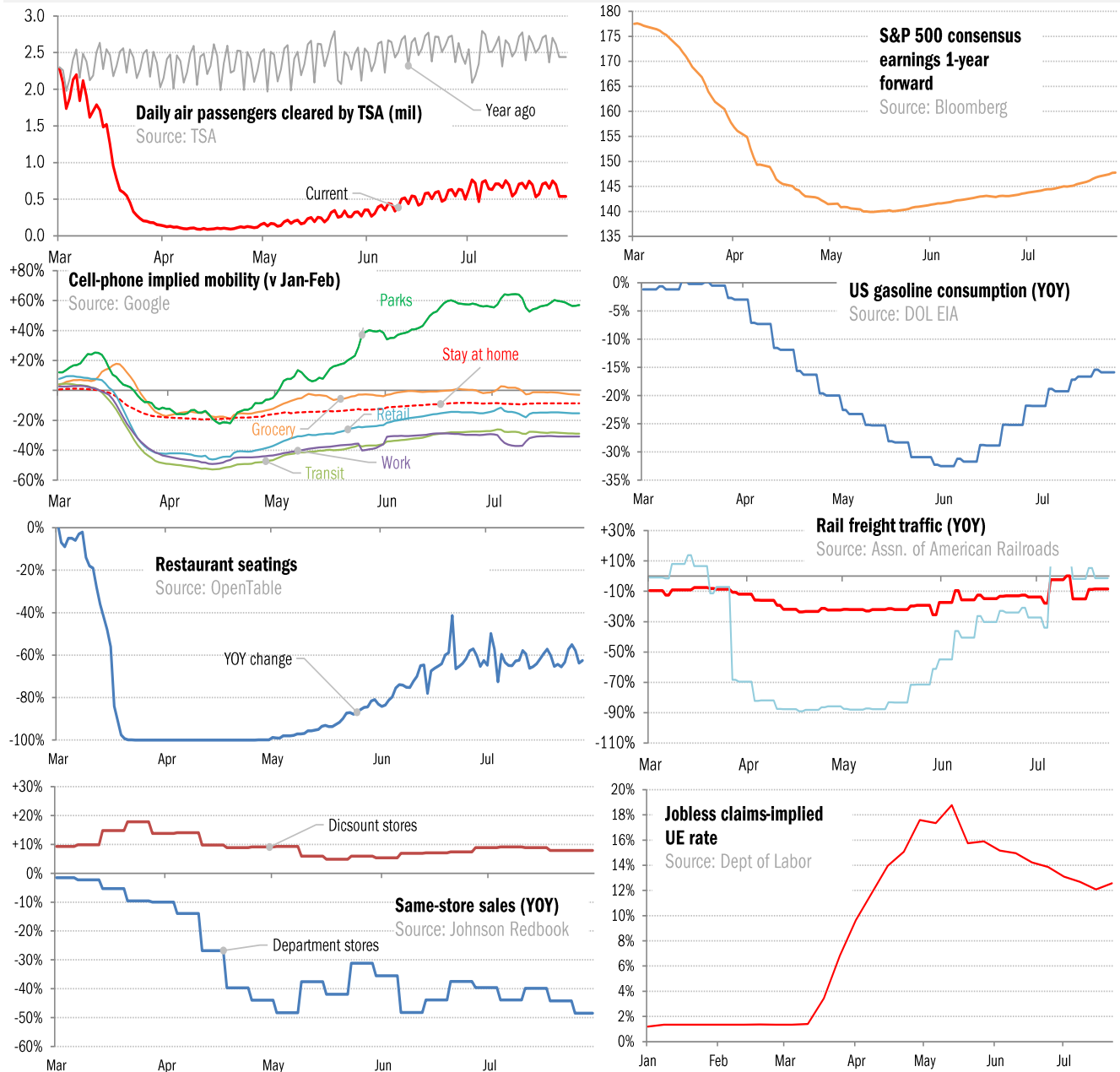


## Data Insights: High-Frequency Post-Virus US Recovery Monitor

Thursday, July 30, 2020

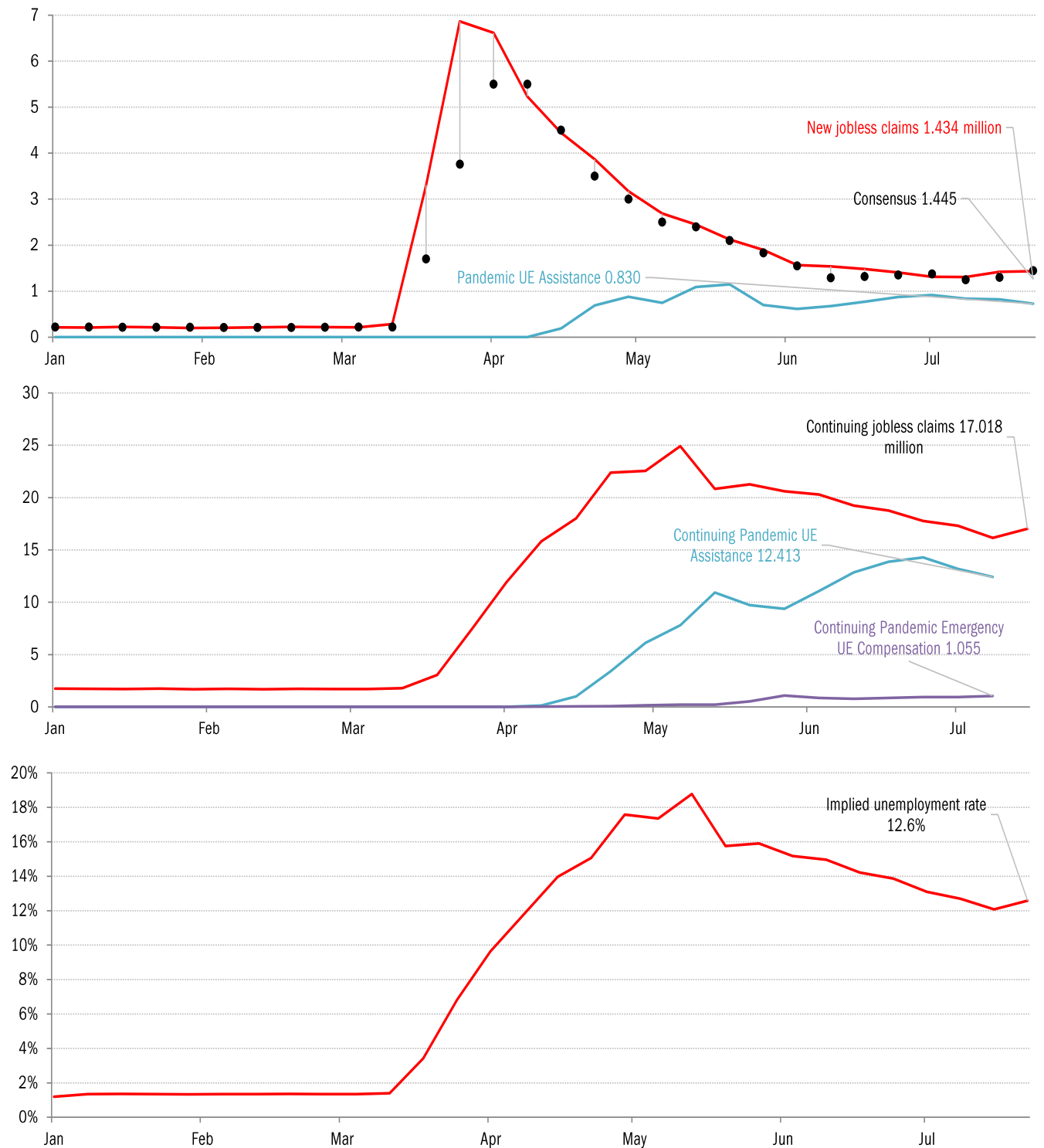
### The US high-frequency macro data dashboard

(state level and other detail in subsequent charts)



Source: As indicated, TrendMacro calculations

## High-frequency view of the US labor market: weekly unemployment claims (millions)

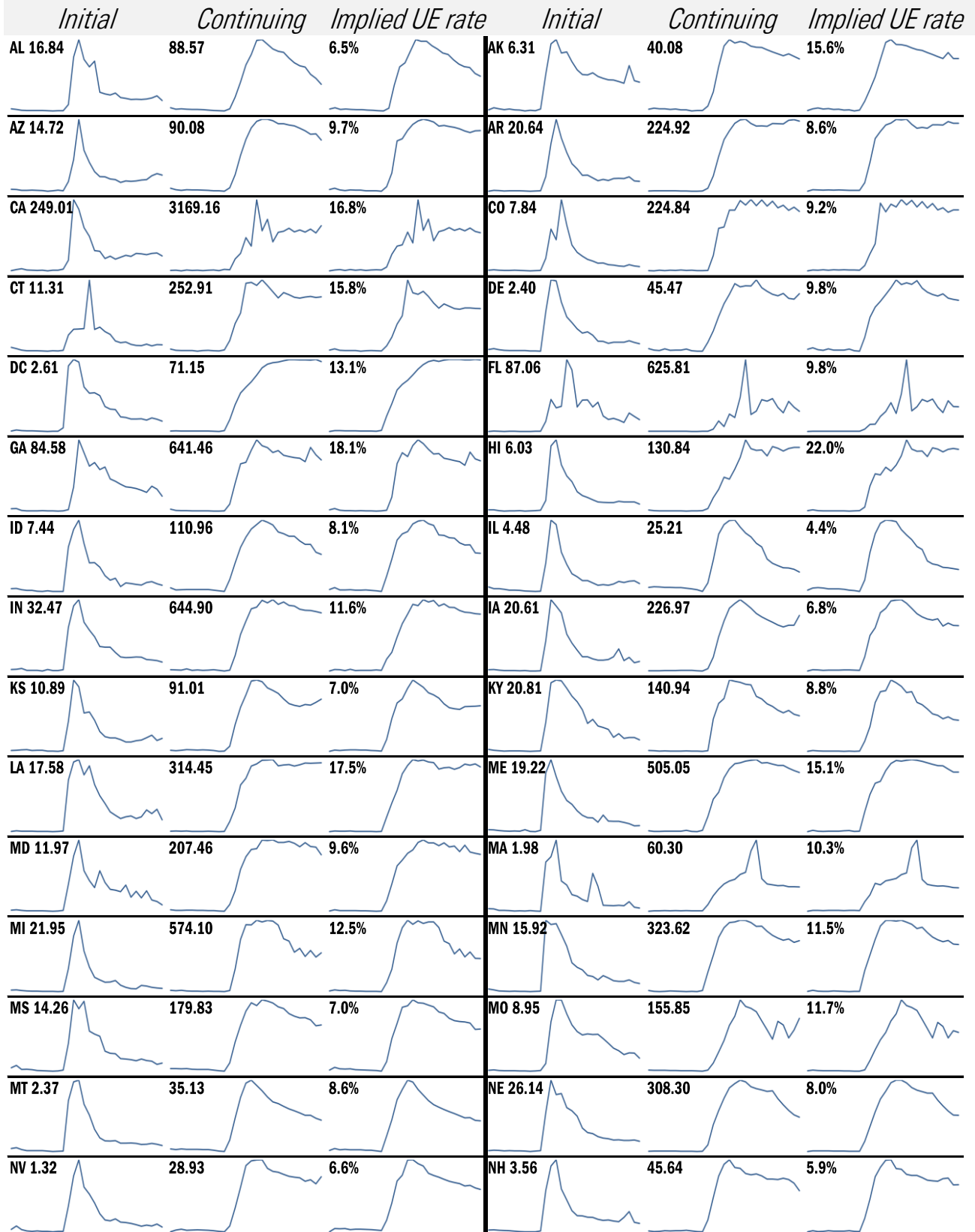


Source: Department of Labor, Bloomberg, TrendMacro calculations

### For more information contact us:

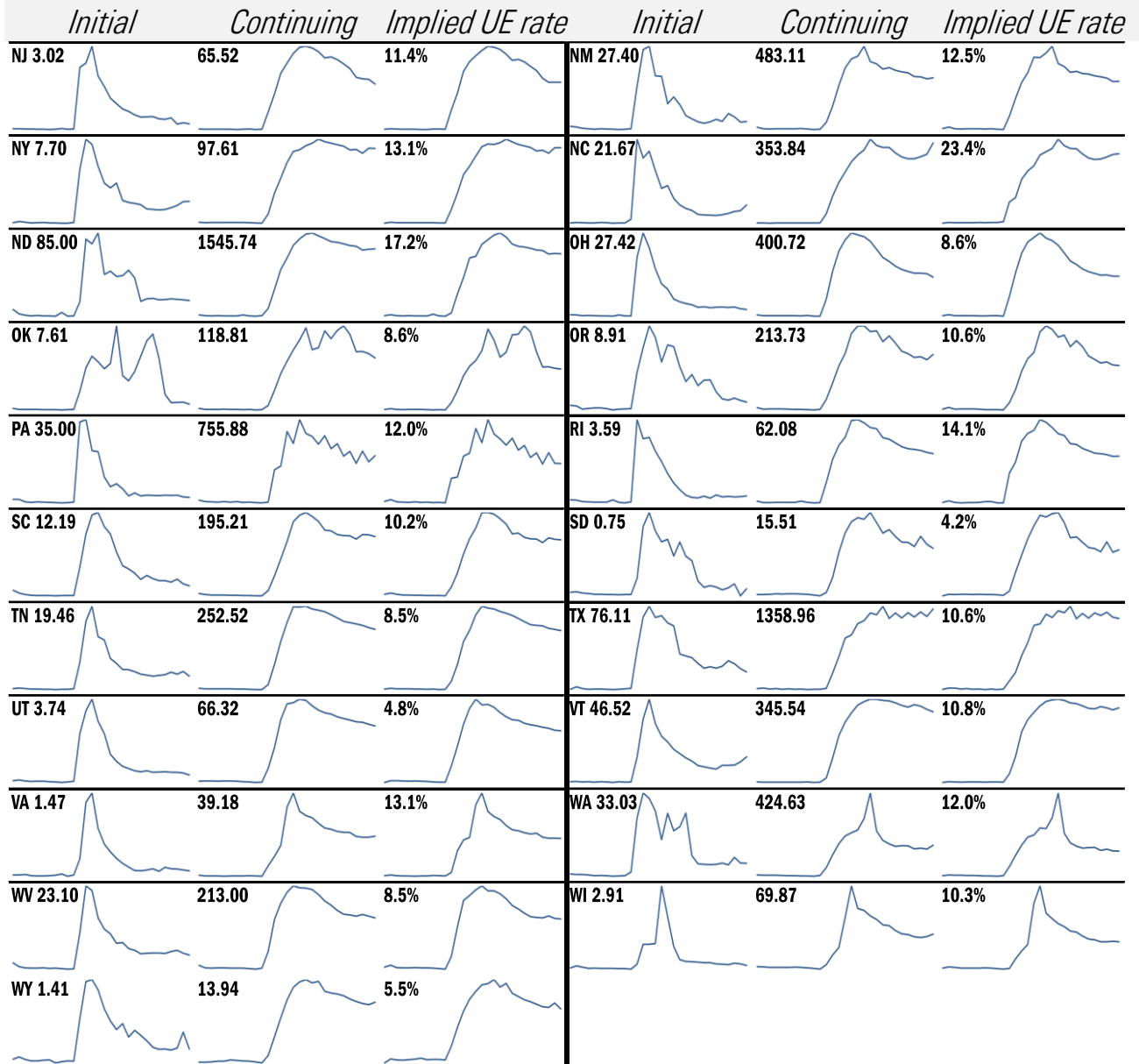
Donald Luskin: 312 273 6766 [don@trendmacro.com](mailto:don@trendmacro.com)  
 Thomas Demas: 704 552 3625 [tdemas@trendmacro.com](mailto:tdemas@trendmacro.com)

## State by state unemployment insurance claims (thousands)



Source: Department of Labor, TrendMacro calculations

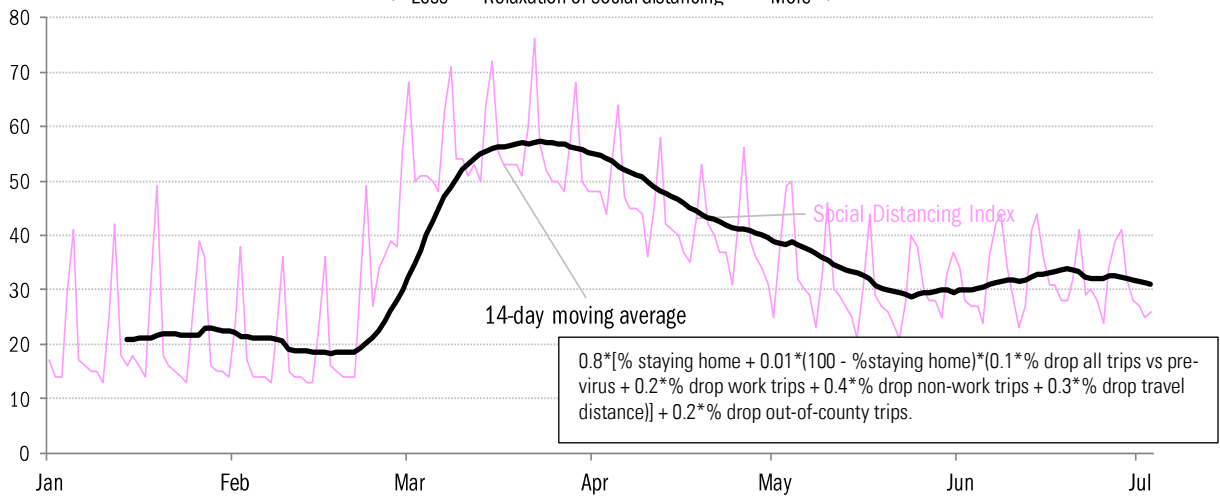
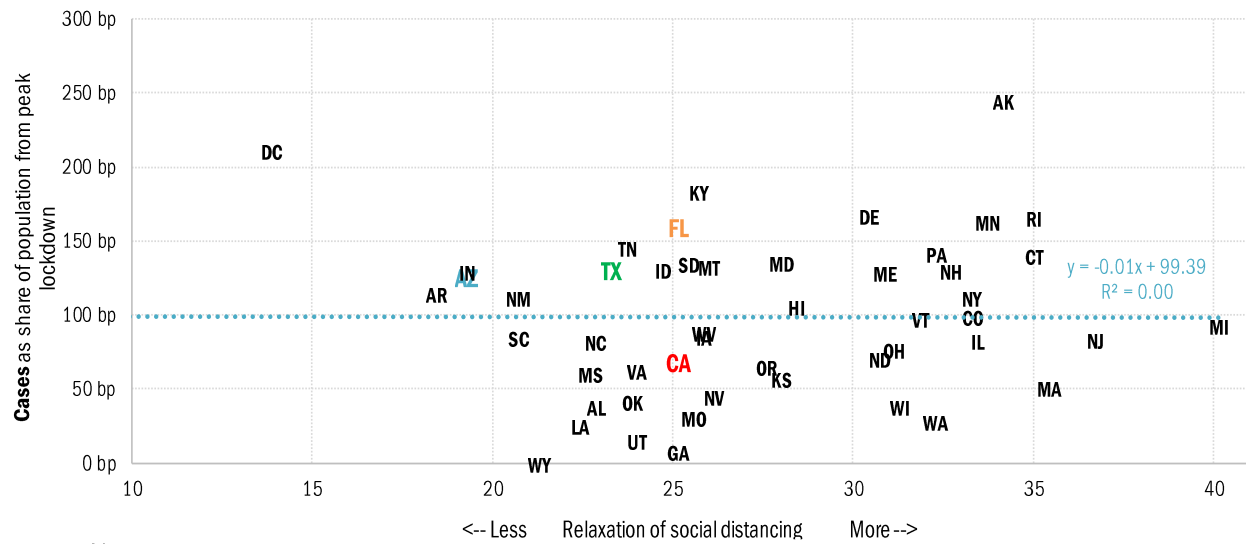
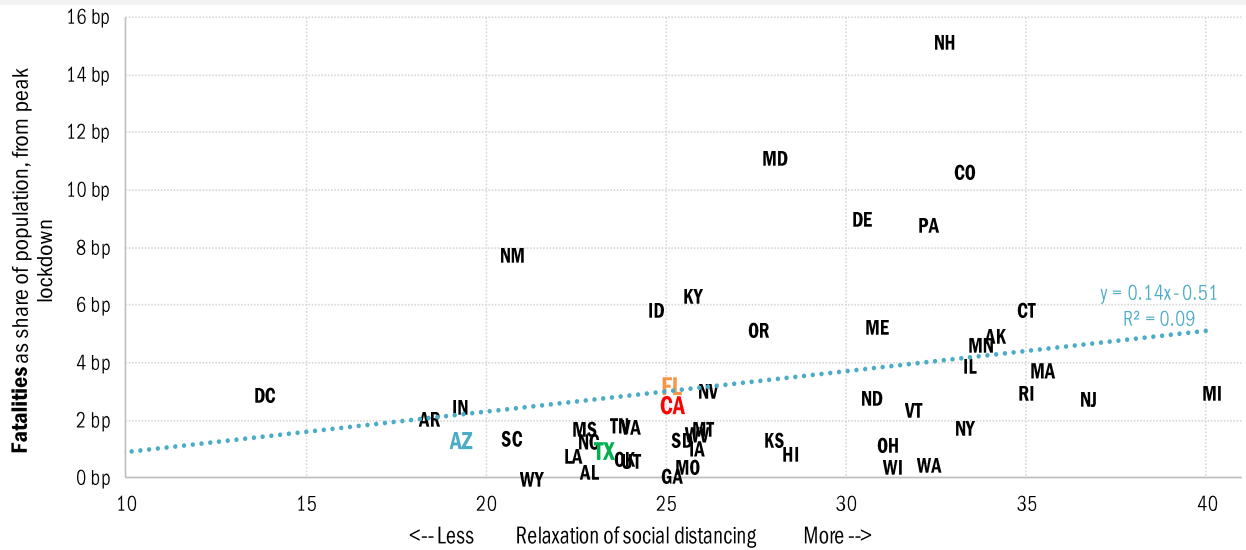
## State by state unemployment insurance claims (thousands)



Source: Department of Labor, TrendMacro calculations

# Assessing the risk of a "second wave" after opening up the US economy

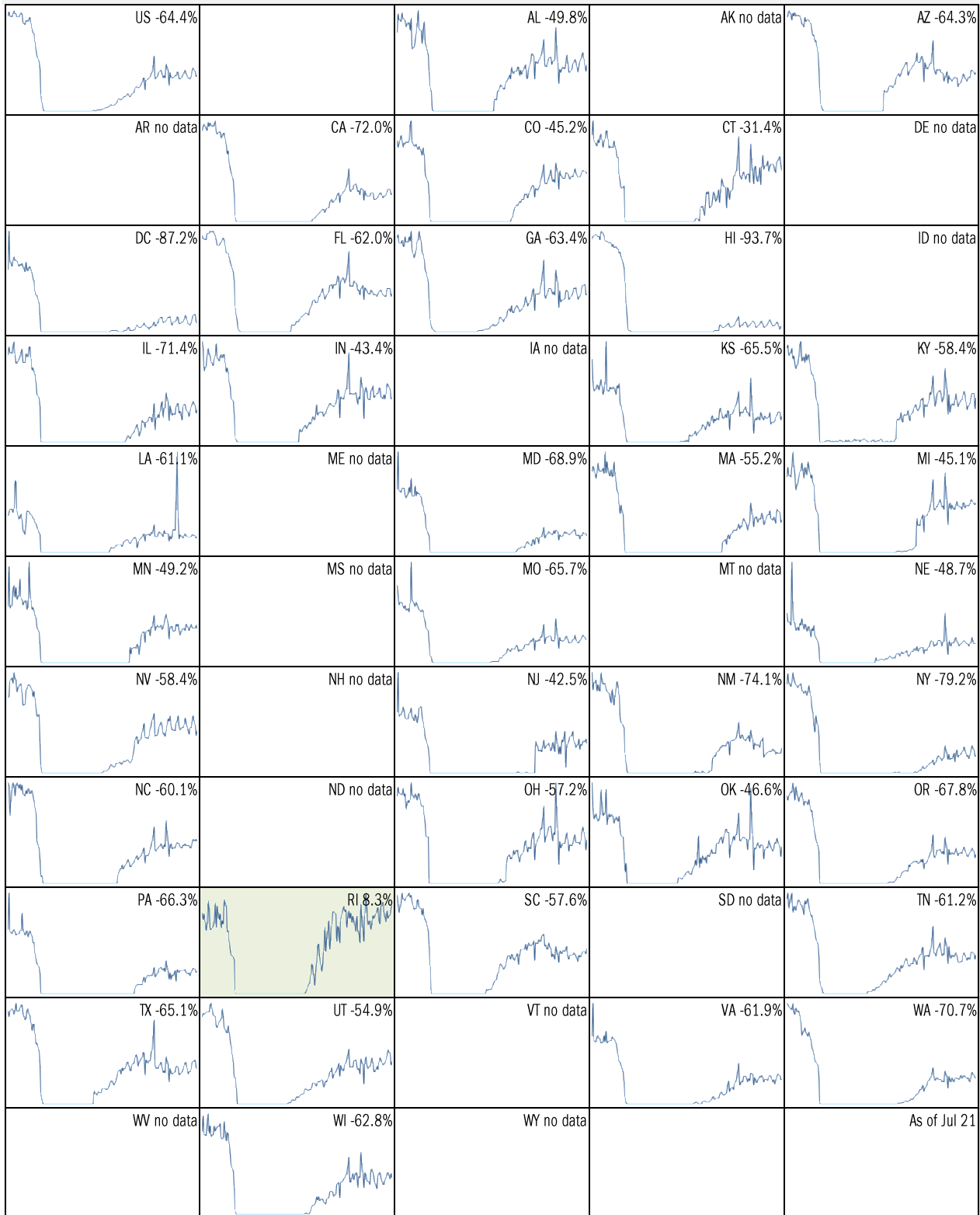
## Covid-2019 fatalities and cases vs social distancing measured by cell-phone data



Source: [University of Maryland COVID-19 Impact Analysis Platform](#), TrendMacro calculations

# Make America eat again:

YOY change in seated diners in restaurants Feb 18 to present ■ Positive



Source: [Open Table](#), TrendMacro calculations

Make America move again: Mobility from Feb 5 vs Jan 3 – Feb 6 baseline ■ Positive

	<i>Retail/rec</i>	<i>Grocery/pharm</i>	<i>Parks</i>	<i>Transit stations</i>	<i>Workplaces</i>	<i>Time at home</i>
<b>US -15</b>		-3	57	-29	-31	9
<b>AL -10</b>		0	39	2	-26	7
<b>AK +13</b>		17	178	5	-22	5
<b>AZ -24</b>		-12	-14	-31	-35	11
<b>AR -6</b>		5	98	-1	-25	6
<b>CA -30</b>		-8	13	-40	-36	12
<b>CO -10</b>		2	101	-26	-32	8
<b>CT -9</b>		-4	120	-20	-30	8
<b>DE -4</b>		4	71	-20	-28	8
<b>DC -49</b>		-22	-38	-67	-49	16
<b>FL -24</b>		-14	-22	-43	-32	10
<b>GA -12</b>		-3	42	-31	-32	9
<b>HI -32</b>		-15	-36	-58	-32	11
<b>ID +2</b>		17	177	18	-26	3
<b>IL -12</b>		-1	103	-28	-31	8

Source: [Google Mobility Reports](https://www.google.com/covid19/mobility/), TrendMacro calculations

Make America move again: Mobility from Feb 5 vs Jan 3 – Feb 6 baseline ■ Positive

	<i>Retail/rec</i>	<i>Grocery/pharm</i>	<i>Parks</i>	<i>Transit stations</i>	<i>Workplaces</i>	<i>Residential</i>
<b>IN -3</b>		4	167	6	-24	5
<b>IA -7</b>		18	217	3	-23	5
<b>KS -8</b>		-1	128	8	-26	6
<b>KY -10</b>		4	113	-5	-27	7
<b>LA -16</b>		-2	-7	-20	-29	9
<b>ME +7</b>		16	295	18	-24	4
<b>MD -15</b>		-4	92	-35	-35	12
<b>MA -14</b>		-8	109	-44	-35	10
<b>MI -1</b>		0	34	-1	-2	0
<b>MN -1</b>		0	36	-4	-1	0
<b>MS -1</b>		0	6	1	-3	1
<b>MO -1</b>		1	14	-1	-2	0
<b>MT +1</b>		4	33	7	-1	0
<b>NE -1</b>		1	26	2	-1	0
<b>NV -3</b>		-1	-1	-5	-4	1

Source: [Google Mobility Reports](#), TrendMacro calculations

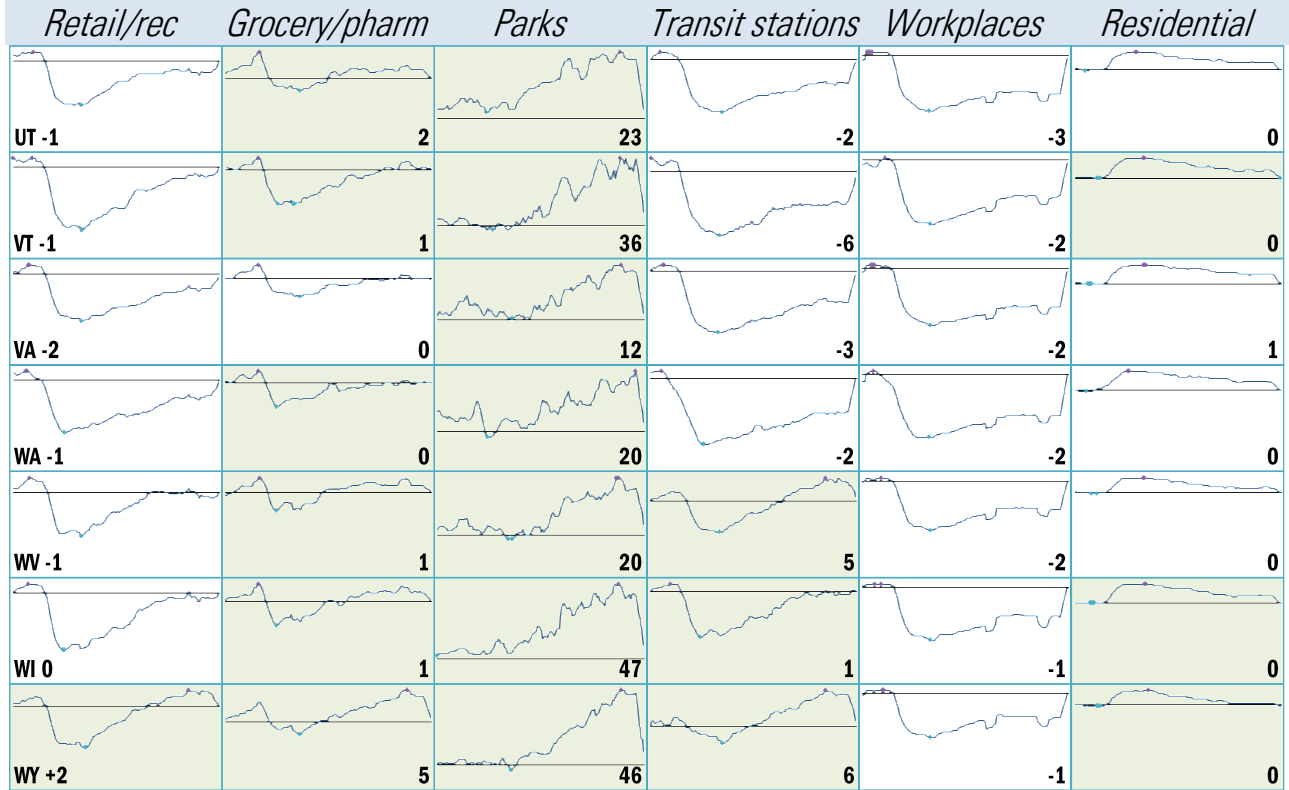


Make America move again: Mobility from Feb 5 vs Jan 3 – Feb 6 baseline ■ Positive

	<i>Retail/rec</i>	<i>Grocery/pharm</i>	<i>Parks</i>	<i>Transit stations</i>	<i>Workplaces</i>	<i>Residential</i>
<b>NH +0</b>						
		<b>6</b>	<b>222</b>	<b>-11</b>	<b>-27</b>	<b>7</b>
<b>NJ -18</b>						
		<b>1</b>	<b>156</b>	<b>-37</b>	<b>-33</b>	<b>10</b>
<b>NM -17</b>						
		<b>0</b>	<b>28</b>	<b>-12</b>	<b>-31</b>	<b>10</b>
<b>NY -23</b>						
		<b>-2</b>	<b>80</b>	<b>-43</b>	<b>-35</b>	<b>10</b>
<b>NC -11</b>						
		<b>1</b>	<b>74</b>	<b>-21</b>	<b>-29</b>	<b>7</b>
<b>ND 0</b>						
		<b>5</b>	<b>171</b>	<b>3</b>	<b>-21</b>	<b>3</b>
<b>OH -7</b>						
		<b>3</b>	<b>190</b>	<b>-3</b>	<b>-27</b>	<b>6</b>
<b>OK -5</b>						
		<b>4</b>	<b>64</b>	<b>2</b>	<b>-26</b>	<b>6</b>
<b>OR -10</b>						
		<b>4</b>	<b>138</b>	<b>-17</b>	<b>-31</b>	<b>7</b>
<b>PA -11</b>						
		<b>0</b>	<b>121</b>	<b>-27</b>	<b>-30</b>	<b>7</b>
<b>RI -2</b>						
		<b>-2</b>	<b>241</b>	<b>-29</b>	<b>-29</b>	<b>7</b>
<b>SC -7</b>						
		<b>3</b>	<b>55</b>	<b>1</b>	<b>-26</b>	<b>7</b>
<b>SD +11</b>						
		<b>30</b>	<b>354</b>	<b>40</b>	<b>-19</b>	<b>4</b>
<b>TN -6</b>						
		<b>4</b>	<b>100</b>	<b>-9</b>	<b>-27</b>	<b>6</b>
<b>TX -18</b>						
		<b>-6</b>	<b>2</b>	<b>-28</b>	<b>-34</b>	<b>12</b>

Source: [Google Mobility Reports](https://www.google.com/covid19/mobility/), TrendMacro calculations

Make America move again: Mobility from Feb 5 vs Jan 3 – Feb 6 baseline ■ Positive



Source: [Google Mobility Reports](https://www.google.com/covid19/mobility/), TrendMacro calculations