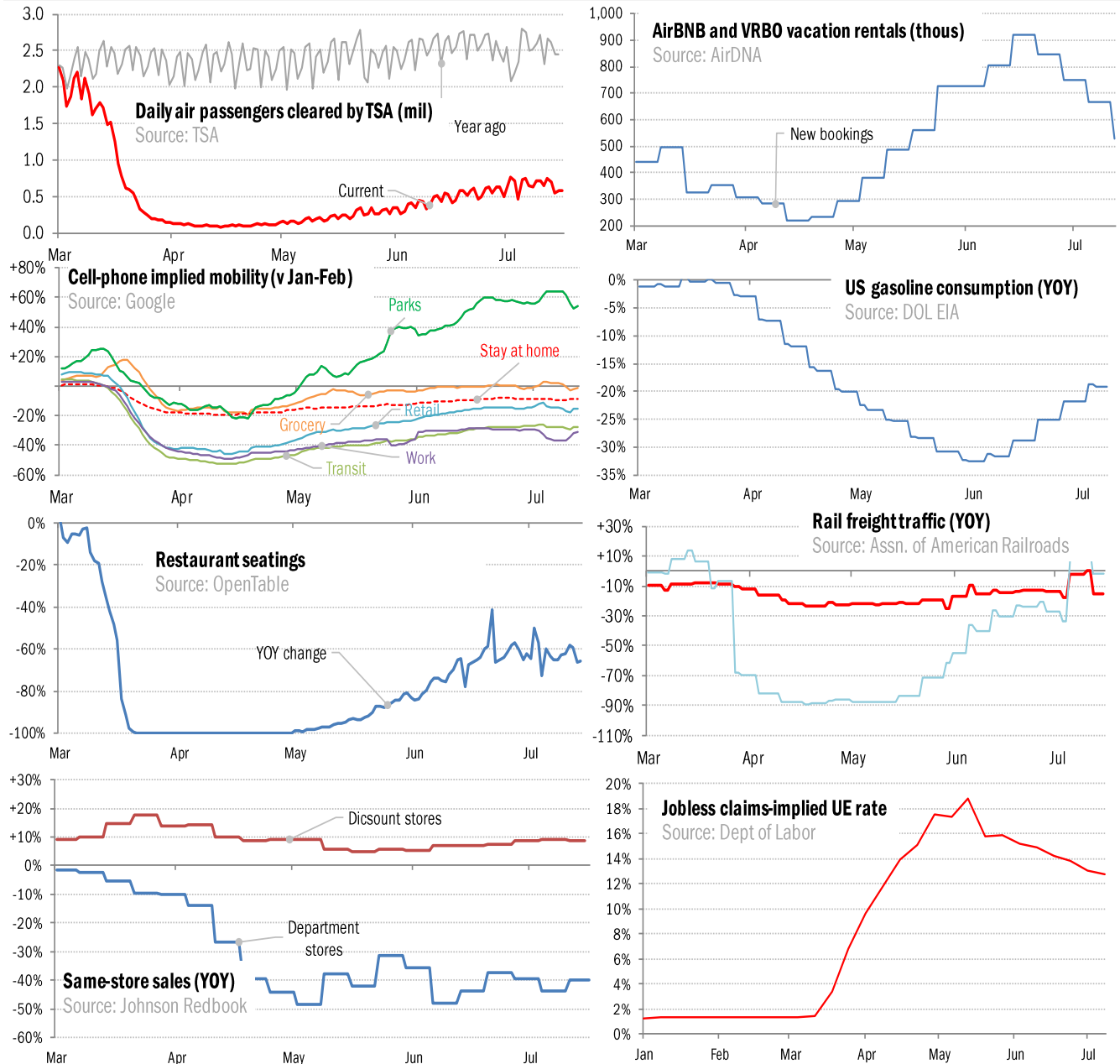


Data Insights: High-Frequency Post-Virus US Recovery Monitor

Thursday, July 16, 2020

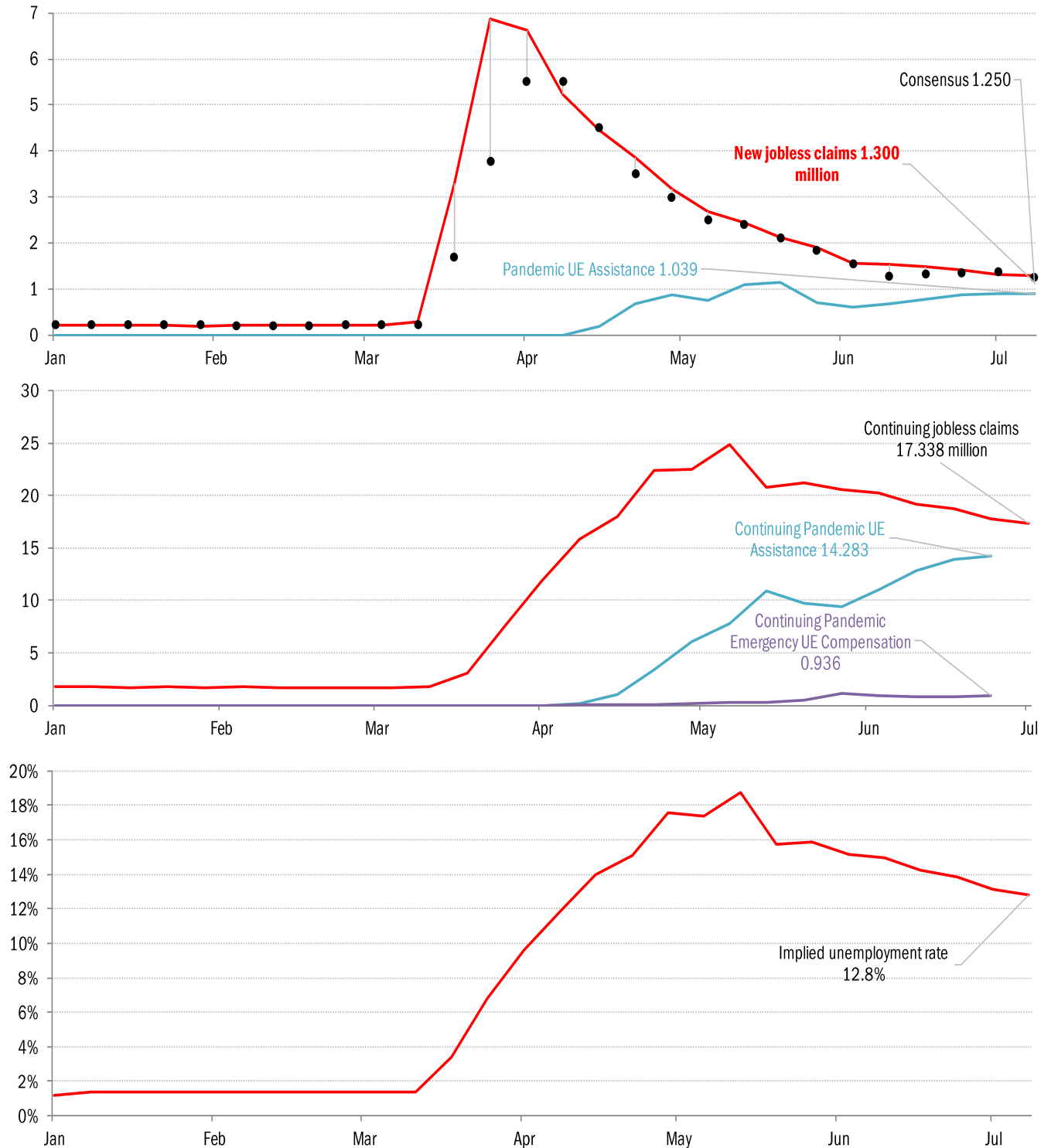
The US high-frequency macro data dashboard

(state level and other detail in subsequent charts)



Source: As indicated, TrendMacro calculations

High-frequency view of the US labor market: weekly unemployment claims (millions)

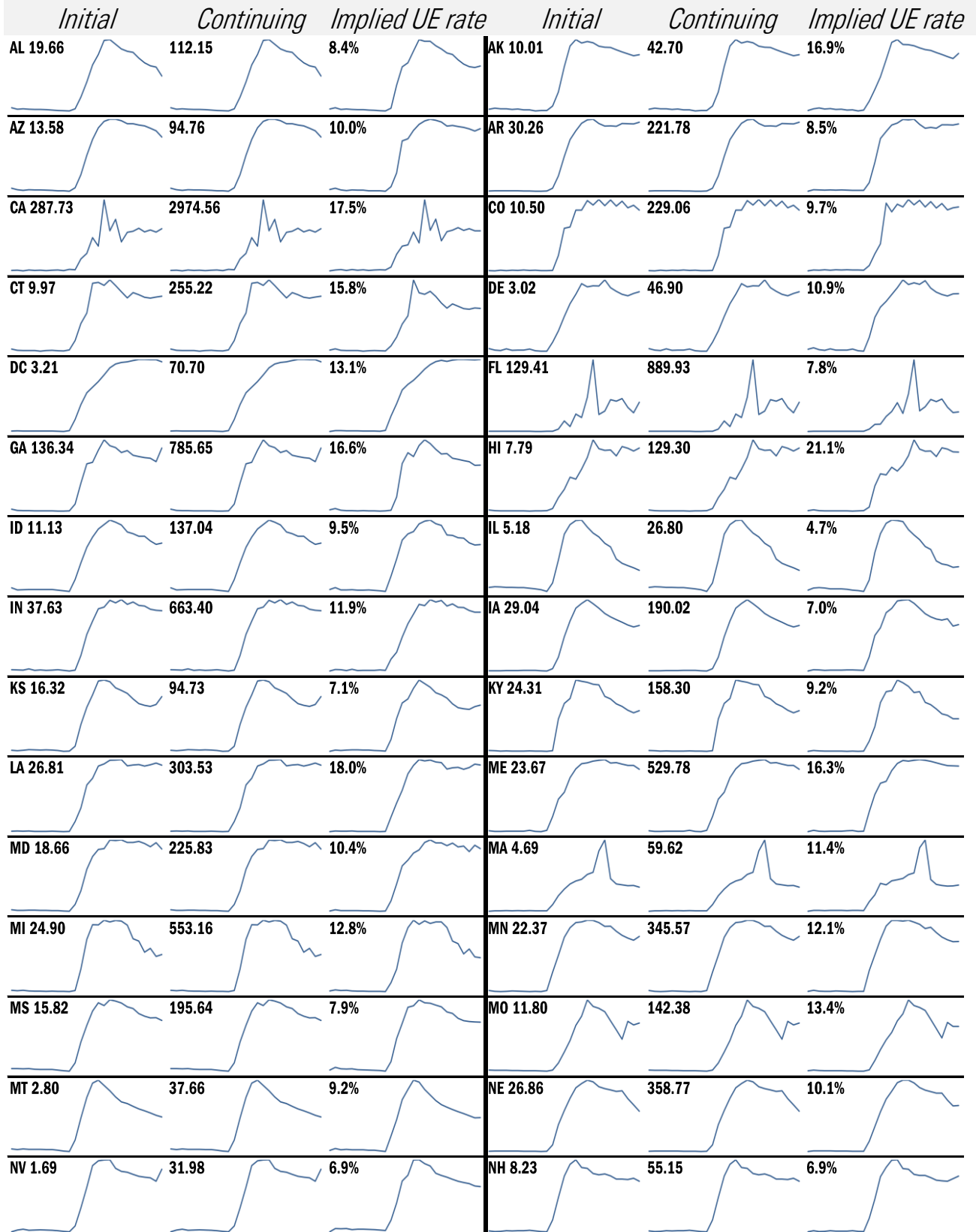


Source: Department of Labor, Bloomberg, TrendMacro calculations

For more information contact us:

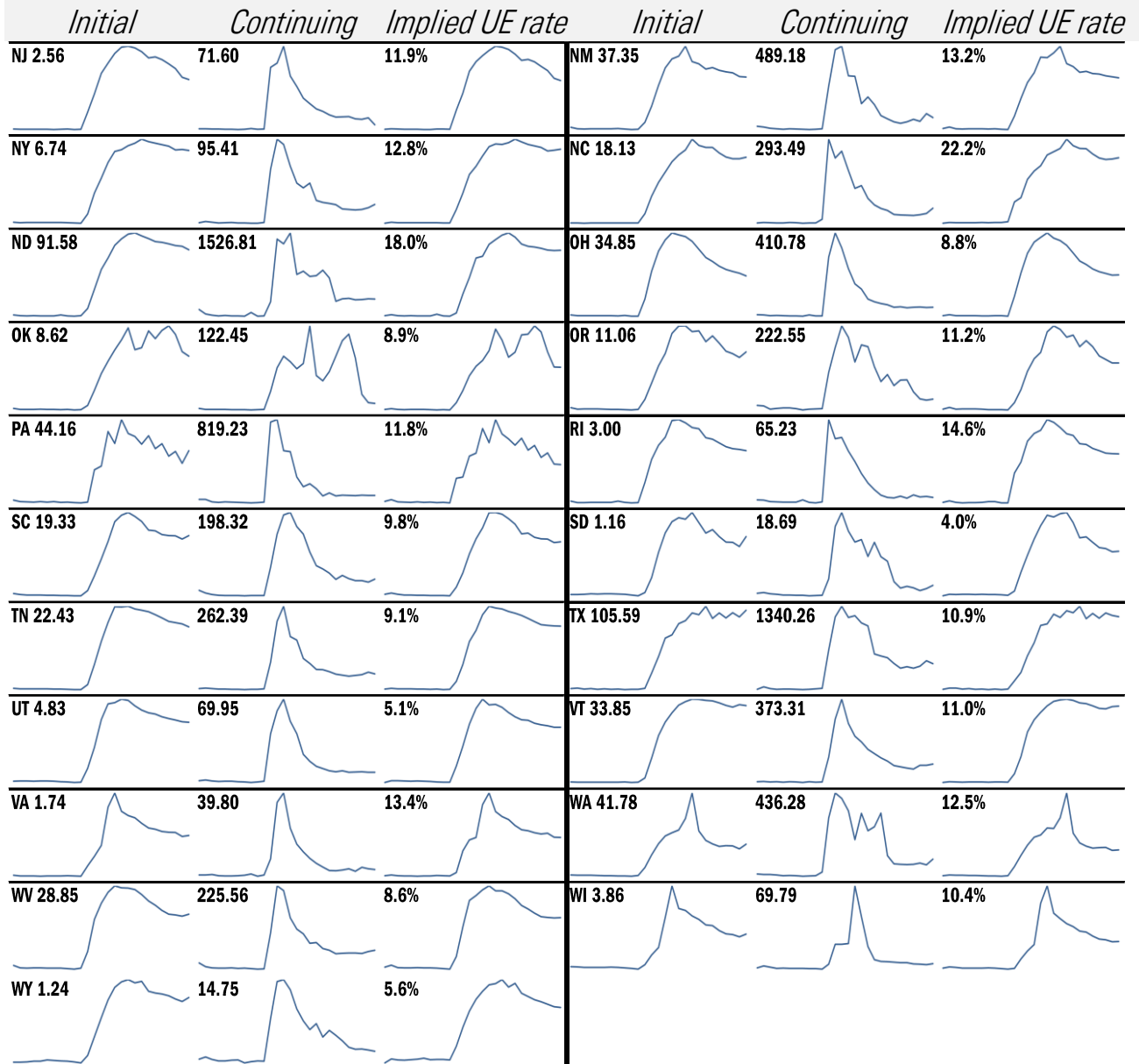
Donald Luskin: 312 273 6766 don@trendmacro.com
 Thomas Demas: 704 552 3625 tdemas@trendmacro.com

State by state unemployment insurance claims (thousands)



Source: Department of Labor, TrendMacro calculations

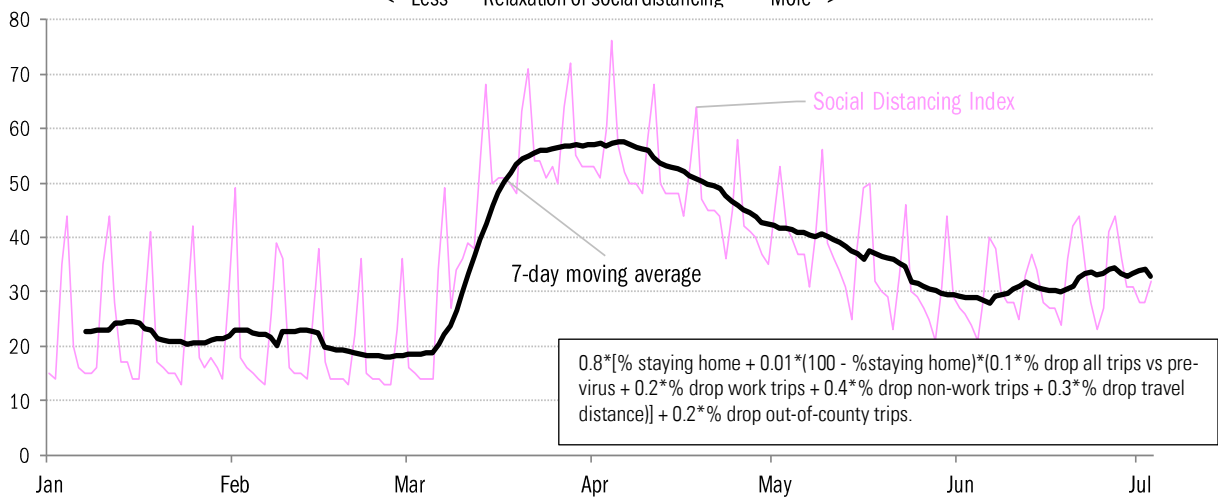
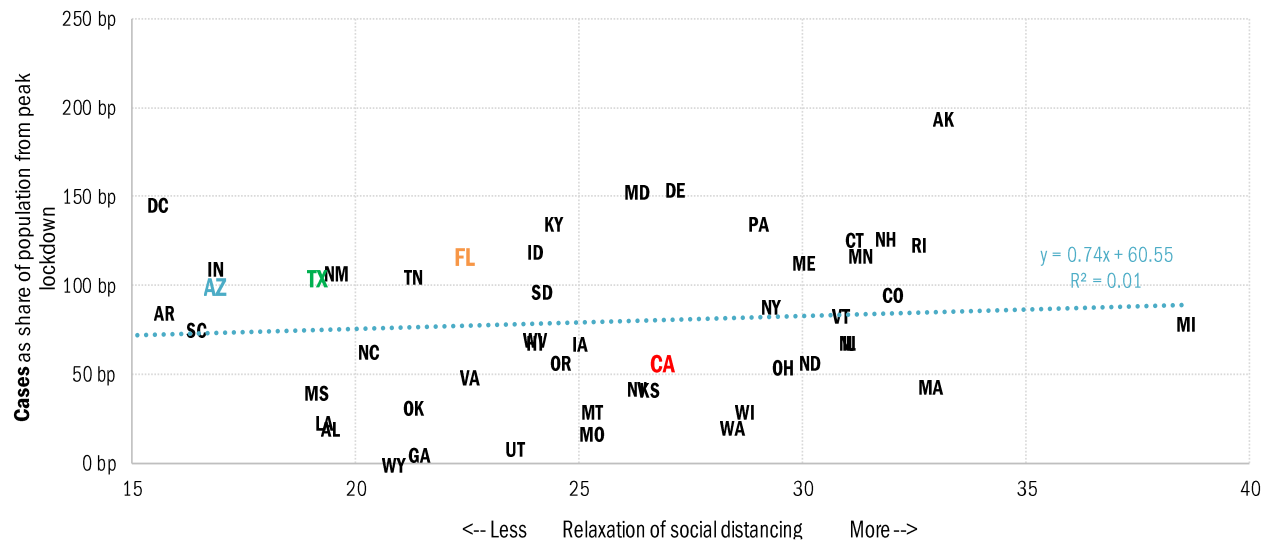
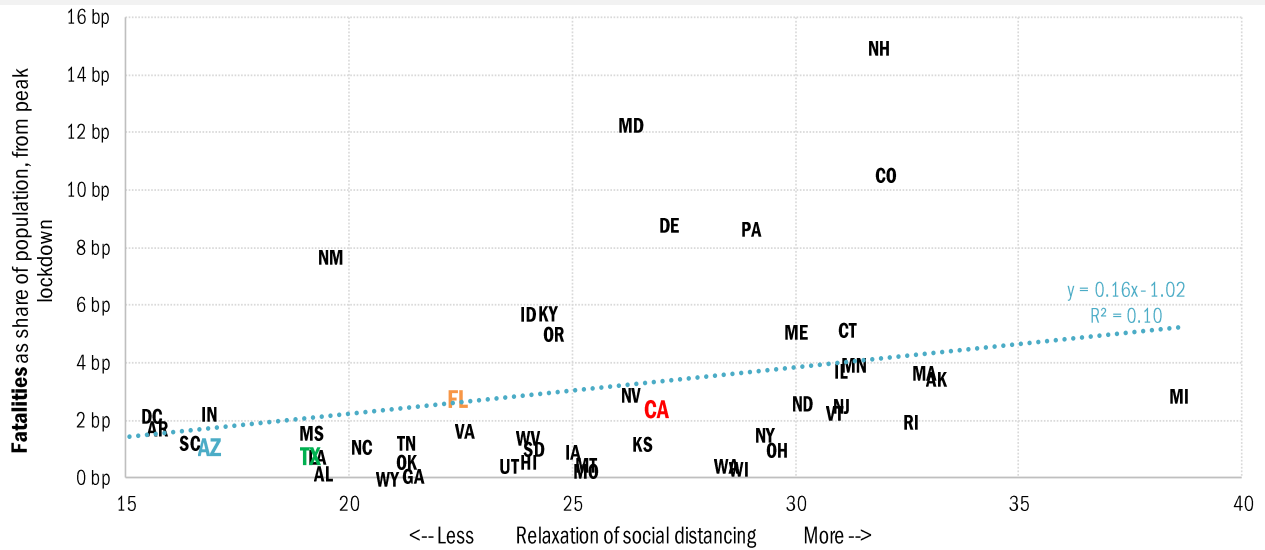
State by state unemployment insurance claims (thousands)



Source: Department of Labor, TrendMacro calculations

Assessing the risk of a "second wave" after opening up the US economy

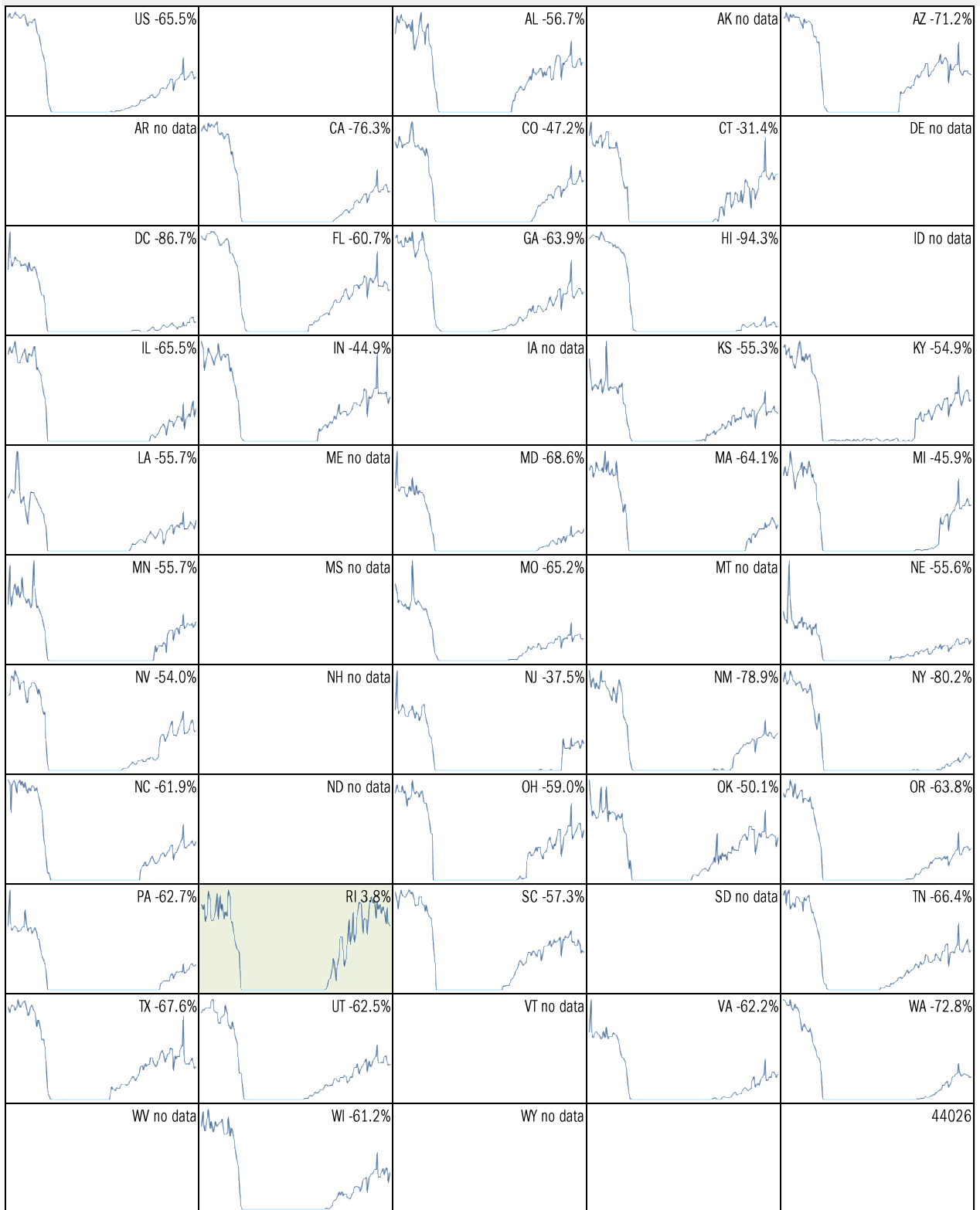
Covid-2019 fatalities and cases vs social distancing measured by cell-phone data



Source: [University of Maryland COVID-19 Impact Analysis Platform](#), TrendMacro calculations

Make America eat again:

YOY change in seated diners in restaurants Feb 18 to present ■ Positive



Source: [Open Table](#), TrendMacro calculations

Make America move again: Mobility from Feb 5 vs Jan 3 – Feb 6 baseline ■ Positive

	<i>Retail/rec</i>	<i>Grocery/pharm</i>	<i>Parks</i>	<i>Transit stations</i>	<i>Workplaces</i>	<i>Time at home</i>
US -15		-1	54	-28	-31	9
AL -8		2	42	4	-26	7
AK +13		17	160	4	-23	5
AZ -25		-10	-22	-30	-36	12
AR -4		6	100	2	-26	6
CA -29		-6	10	-38	-35	12
CO -10		5	102	-24	-32	8
CT -10		-4	105	-21	-31	9
DE -4		3	86	-20	-29	9
DC -49		-19	-34	-65	-49	16
FL -24		-12	-19	-41	-32	11
GA -12		-3	41	-31	-32	9
HI -34		-19	-35	-57	-32	12
ID +5		19	222	19	-26	4
IL -12		0	99	-27	-31	8

Source: [Google Mobility Reports](#), TrendMacro calculations

Make America move again: Mobility from Feb 5 vs Jan 3 – Feb 6 baseline ■ Positive

	<i>Retail/rec</i>	<i>Grocery/pharm</i>	<i>Parks</i>	<i>Transit stations</i>	<i>Workplaces</i>	<i>Residential</i>
IN +0		6	174	9	-25	6
IA -5		19	204	5	-24	6
KS -8		1	138	10	-26	6
KY -7		7	119	-1	-27	6
LA -12		0	-2	-17	-28	8
ME +6		13	255	10	-26	5
MD -14		-2	112	-31	-35	12
MA -14		-6	109	-44	-36	11
MI -4		4	255	-10	-29	7
MN -8		6	173	-35	-31	8
MS -3		2	32	4	-26	7
MO -2		7	120	-6	-25	5
MT +10		27	227	33	-21	2
NE -4		6	174	9	-25	6
NV -16		-1	-16	-32	-34	10

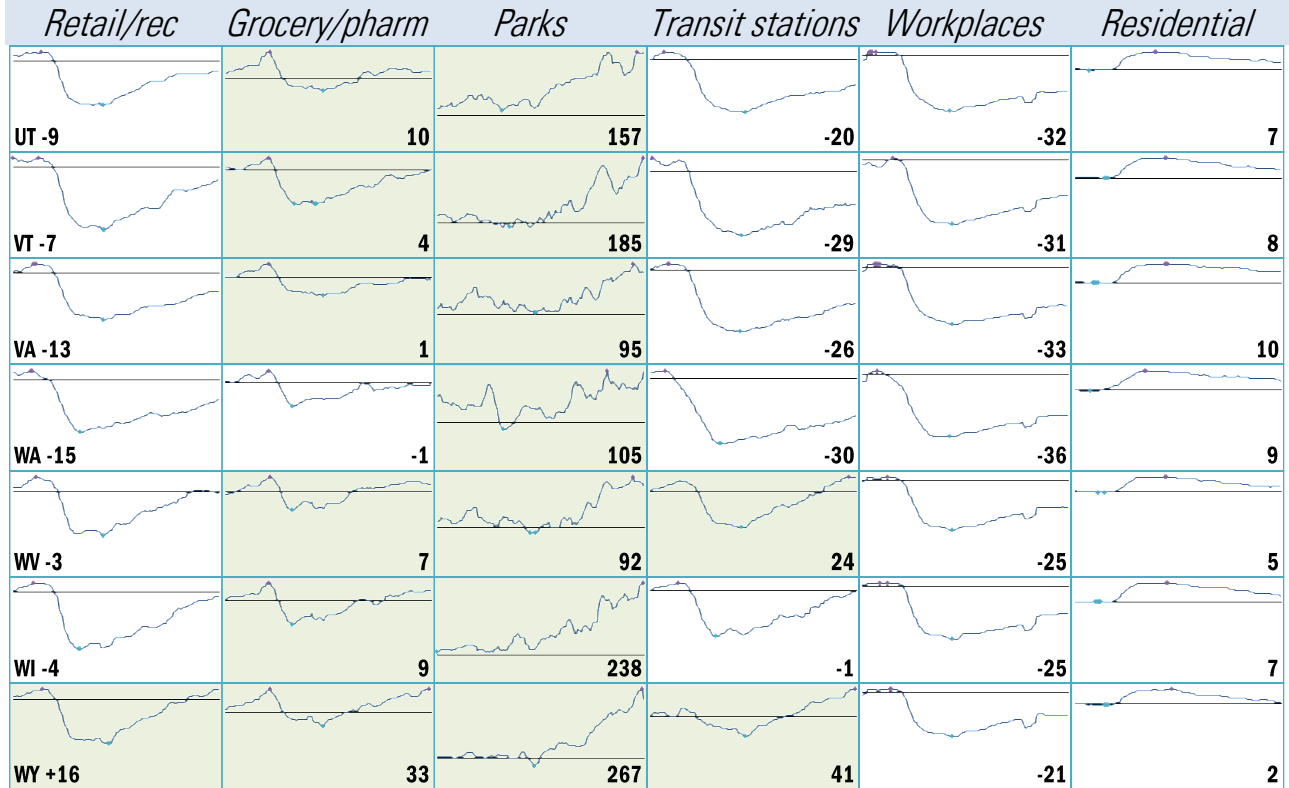
Source: [Google Mobility Reports](https://www.google.com/covid19/mobility/), TrendMacro calculations

Make America move again: Mobility from Feb 5 vs Jan 3 – Feb 6 baseline ■ Positive

	<i>Retail/rec</i>	<i>Grocery/pharm</i>	<i>Parks</i>	<i>Transit stations</i>	<i>Workplaces</i>	<i>Residential</i>
NH +2						
NJ -23						
NM -13						
NY -27						
NC -11						
ND +0						
OH -6						
OK -4						
OR -11						
PA -12						
RI -1						
SC -7						
SD +11						
TN -6						
TX -19						

Source: [Google Mobility Reports](https://www.google.com/covid19/mobility/), TrendMacro calculations

Make America move again: Mobility from Feb 5 vs Jan 3 – Feb 6 baseline ■ Positive



Source: [Google Mobility Reports](#), TrendMacro calculations