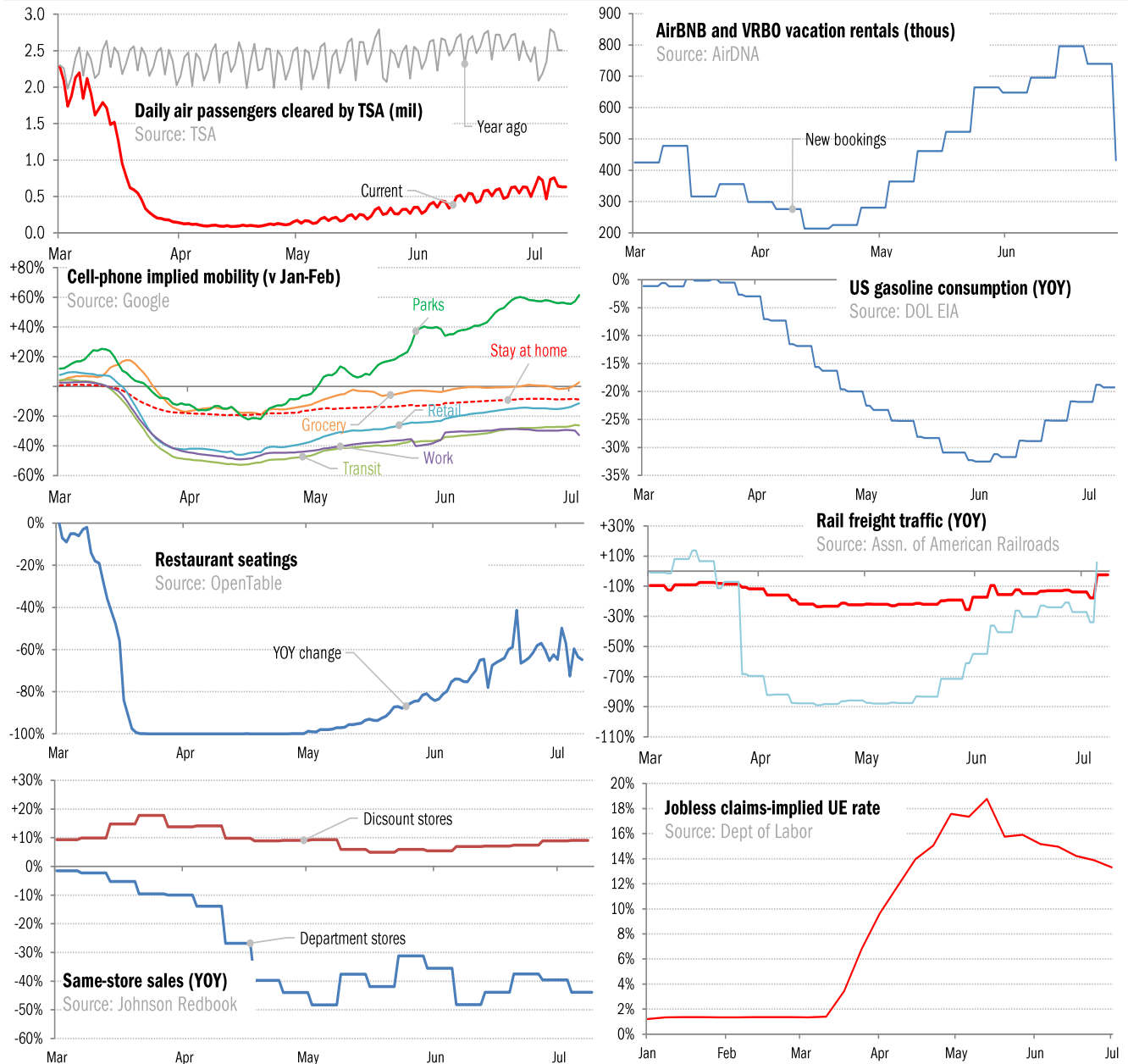


## Data Insights: High-Frequency Post-Virus US Recovery Monitor

Thursday, July 9, 2020

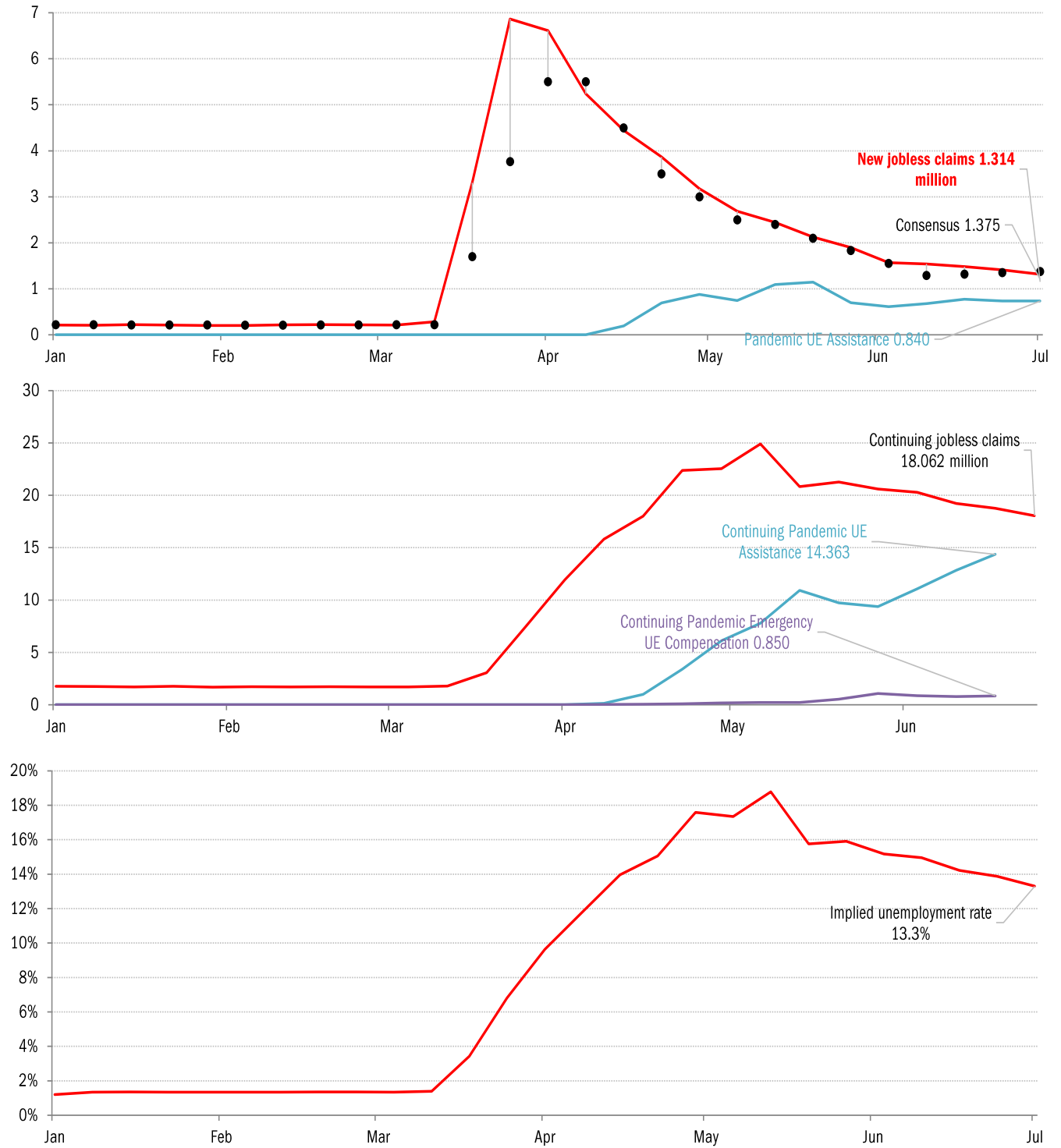
### The US high-frequency macro data dashboard

(state level and other detail in subsequent charts)



Source: As indicated, TrendMacro calculations

# High-frequency view of the US labor market: weekly unemployment claims (millions)

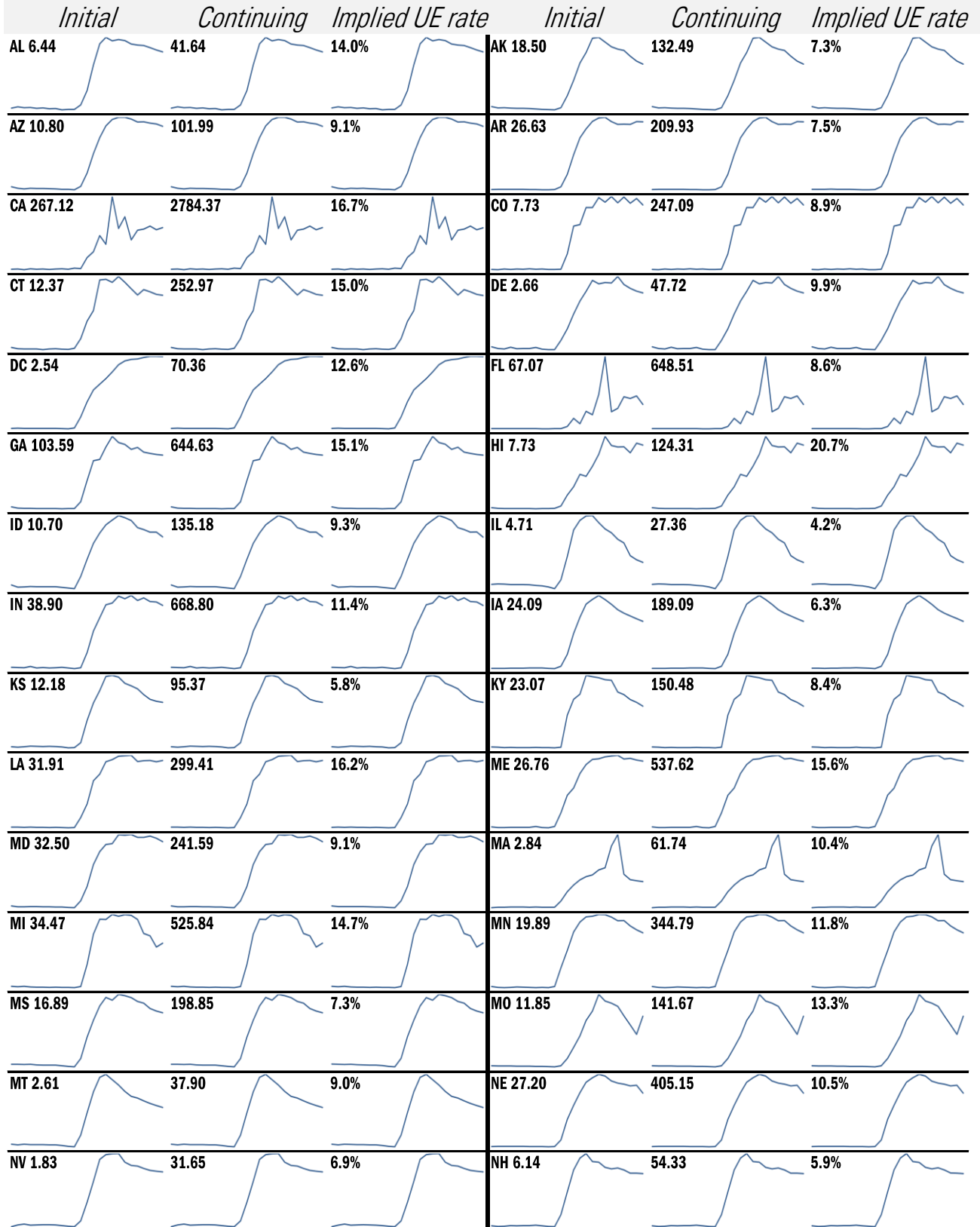


Source: Department of Labor, Bloomberg, TrendMacro calculations

## For more information contact us:

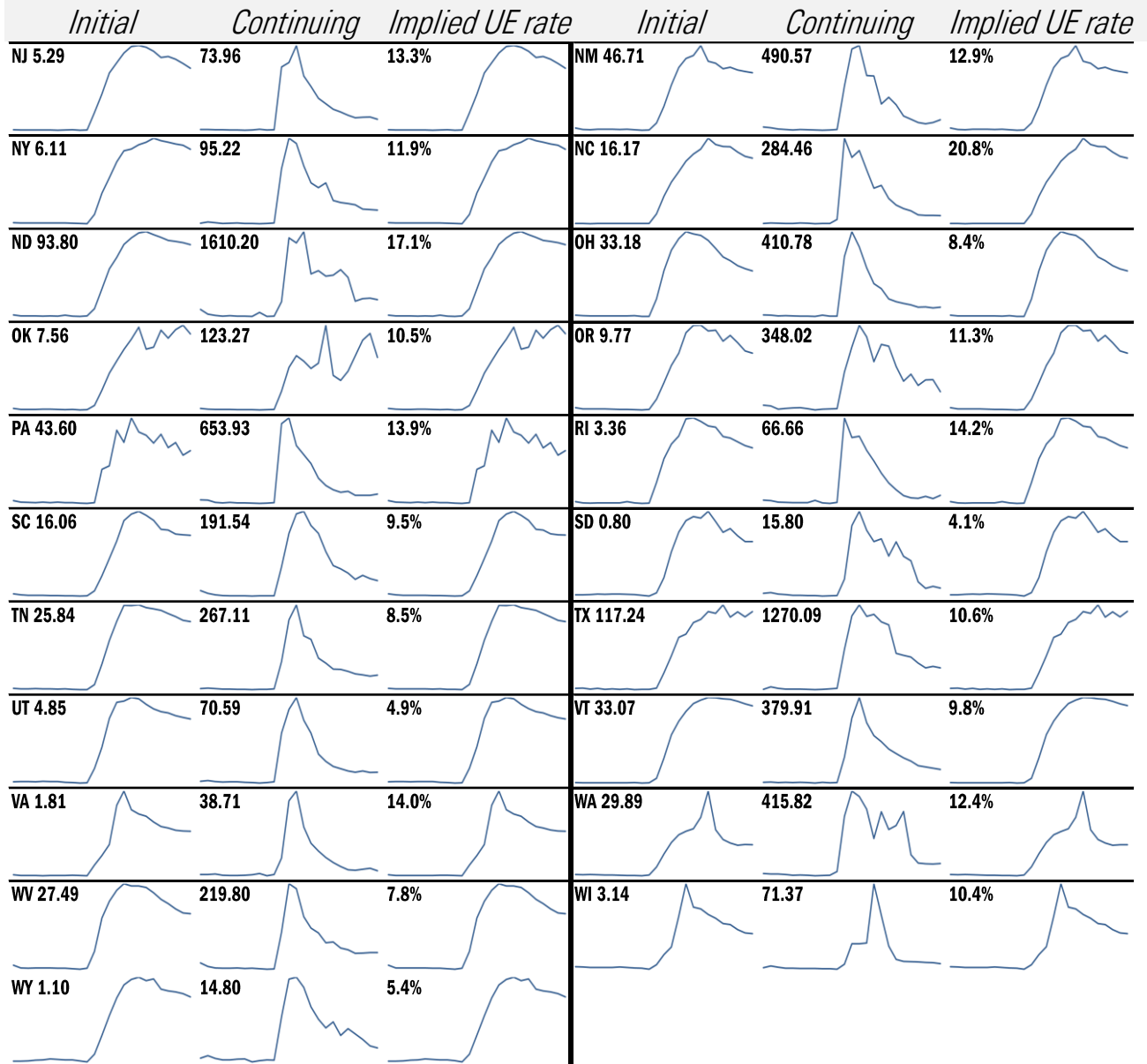
Donald Luskin: 312 273 6766 [don@trendmacro.com](mailto:don@trendmacro.com)  
Thomas Demas: 704 552 3625 [tdemas@trendmacro.com](mailto:tdemas@trendmacro.com)

# State by state unemployment insurance claims (thousands)



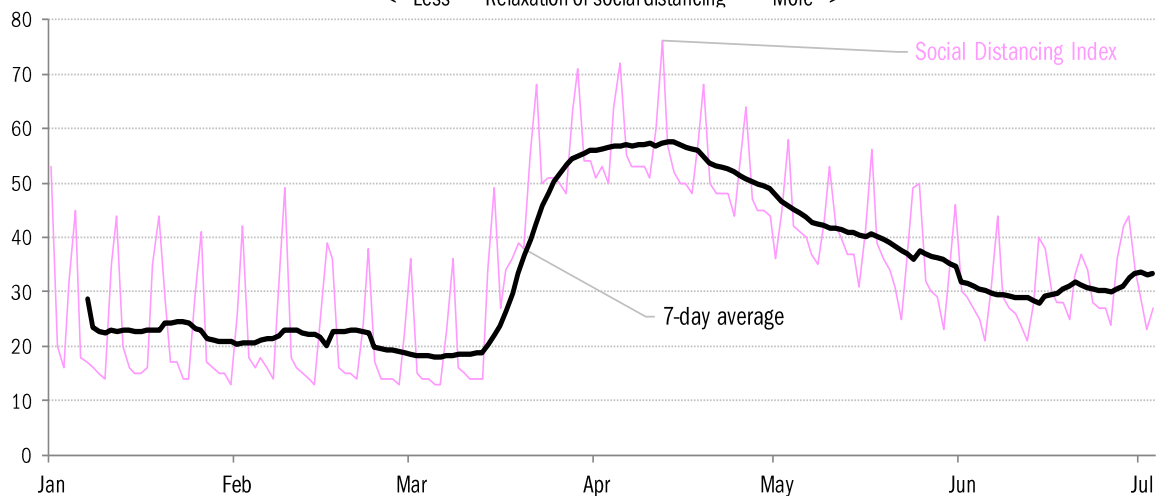
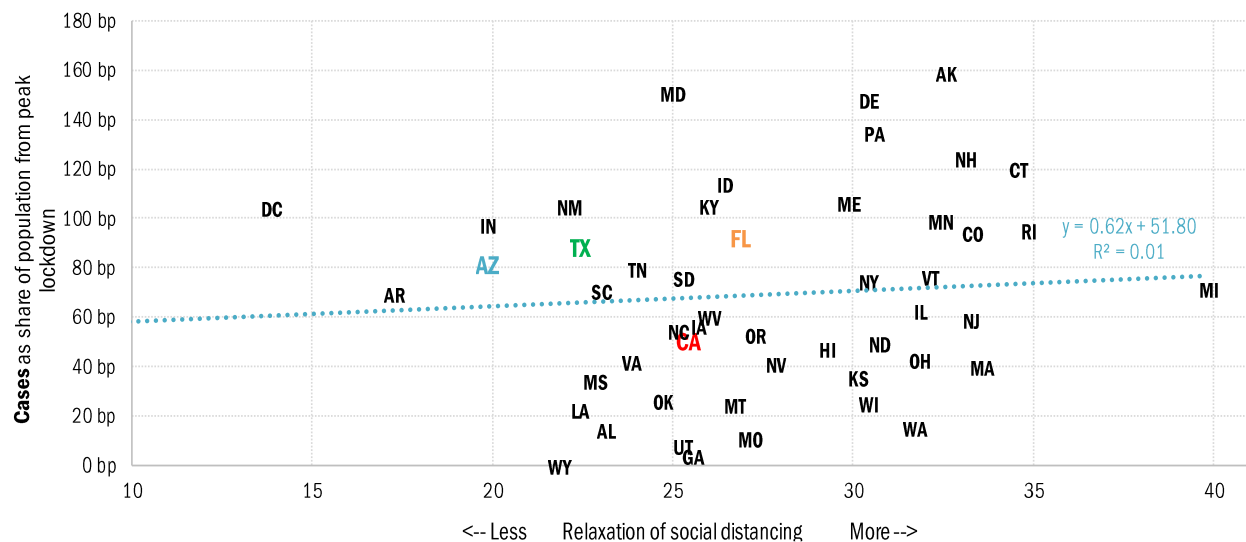
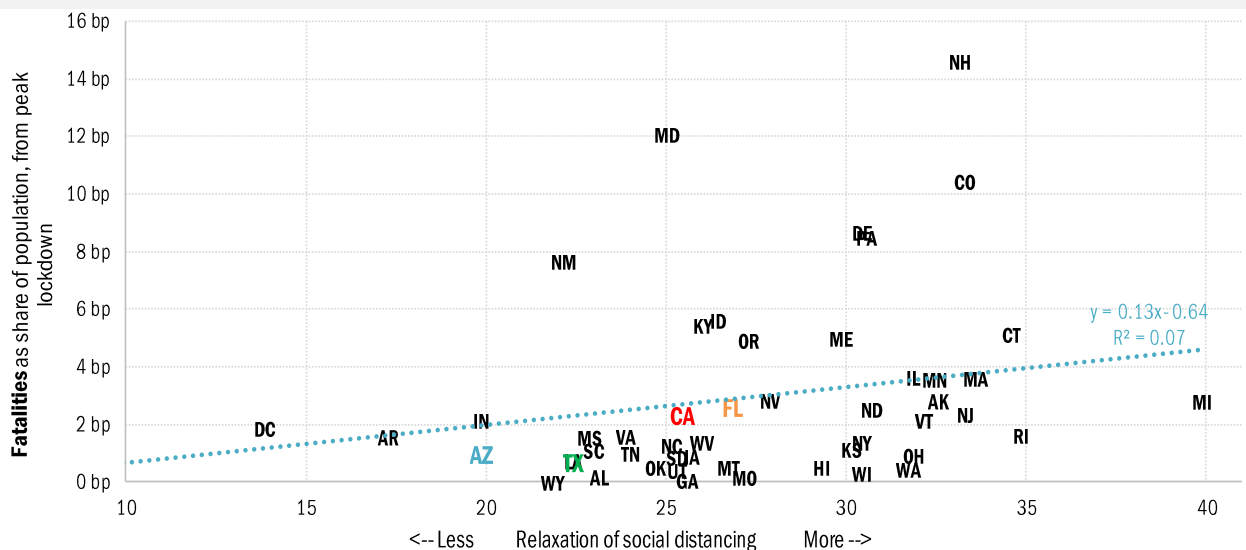
Source: Department of Labor, TrendMacro calculations

# State by state unemployment insurance claims (thousands)



Source: Department of Labor, TrendMacro calculations

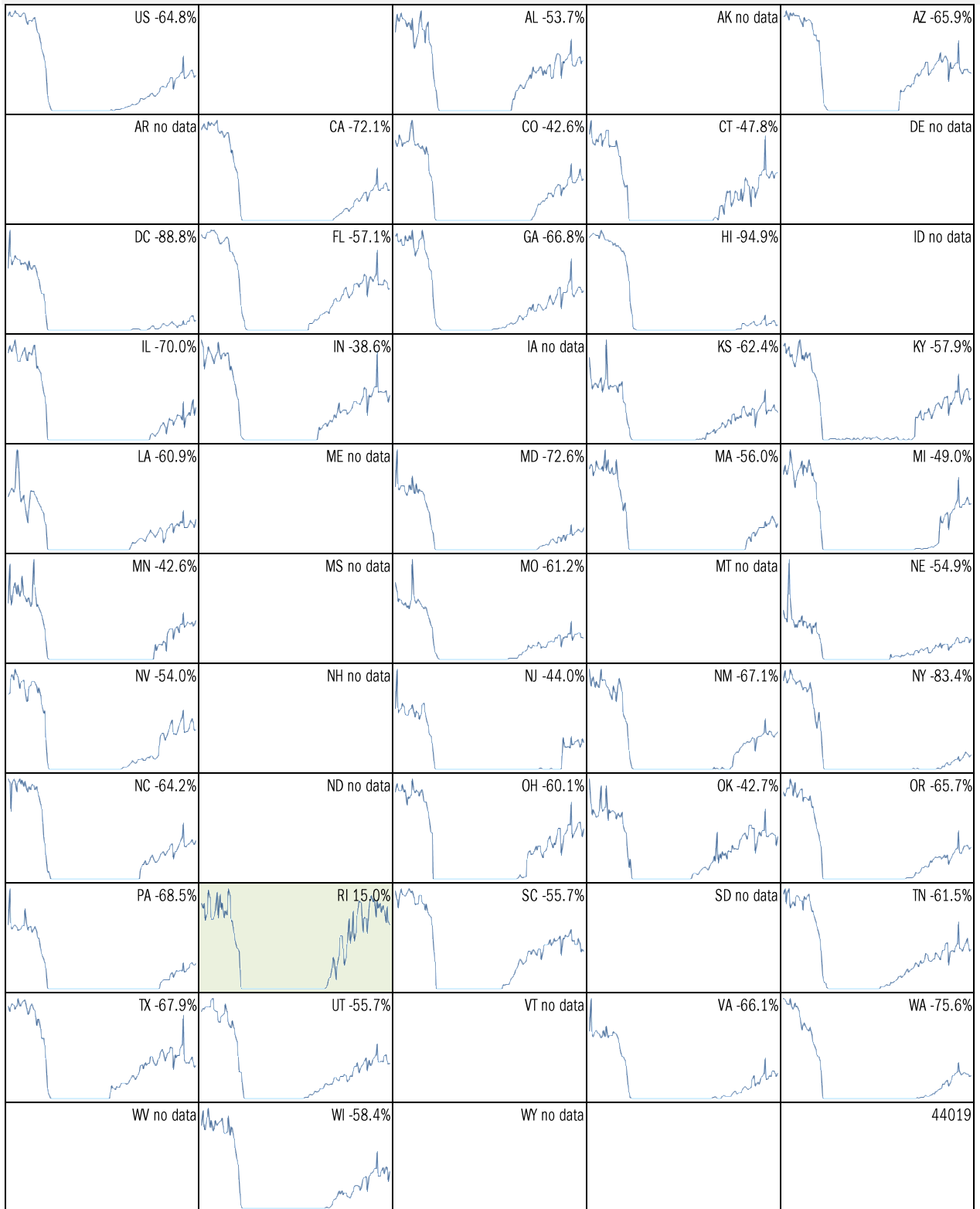
# Assessing the risk of a "second wave" after opening up the US economy Covid-2019 fatalities and cases vs social distancing measured by cell-phone data



Source: [University of Maryland COVID-19 Impact Analysis Platform](#), TrendMacro calculations

# Make America eat again:

YOY change in seated diners in restaurants Feb 18 to present ■ Positive



Source: [Open Table](#), TrendMacro calculations

Make America move again: Mobility from Feb 5 vs Jan 3 – Feb 6 baseline ■ Positive

	<i>Retail/rec</i>	<i>Grocery/pharm</i>	<i>Parks</i>	<i>Transit stations</i>	<i>Workplaces</i>	<i>Time at home</i>
<b>US -11</b>						
		<b>3</b>	<b>61</b>	<b>-26</b>	<b>-33</b>	<b>9</b>
<b>AL -3</b>						
		<b>7</b>	<b>51</b>	<b>7</b>	<b>-28</b>	<b>8</b>
<b>AK +17</b>						
		<b>24</b>	<b>201</b>	<b>1</b>	<b>-26</b>	<b>4</b>
<b>AZ -21</b>						
		<b>-6</b>	<b>-11</b>	<b>-28</b>	<b>-36</b>	<b>11</b>
<b>AR +0</b>						
		<b>11</b>	<b>113</b>	<b>4</b>	<b>-28</b>	<b>6</b>
<b>CA -27</b>						
		<b>-4</b>	<b>12</b>	<b>-37</b>	<b>-36</b>	<b>12</b>
<b>CO -7</b>						
		<b>7</b>	<b>109</b>	<b>-24</b>	<b>-34</b>	<b>8</b>
<b>CT -8</b>						
		<b>0</b>	<b>87</b>	<b>-21</b>	<b>-33</b>	<b>10</b>
<b>DE +2</b>						
		<b>9</b>	<b>94</b>	<b>-15</b>	<b>-30</b>	<b>8</b>
<b>DC -48</b>						
		<b>-17</b>	<b>-31</b>	<b>-64</b>	<b>-49</b>	<b>15</b>
<b>FL -21</b>						
		<b>-8</b>	<b>-13</b>	<b>-39</b>	<b>-33</b>	<b>10</b>
<b>GA -8</b>						
		<b>2</b>	<b>52</b>	<b>-29</b>	<b>-33</b>	<b>9</b>
<b>HI -32</b>						
		<b>-17</b>	<b>-30</b>	<b>-58</b>	<b>-35</b>	<b>12</b>
<b>ID +8</b>						
		<b>22</b>	<b>184</b>	<b>21</b>	<b>-28</b>	<b>4</b>
<b>IL -9</b>						
		<b>4</b>	<b>98</b>	<b>-26</b>	<b>-33</b>	<b>8</b>

Source: [Google Mobility Reports](#), TrendMacro calculations

Make America move again: Mobility from Feb 5 vs Jan 3 – Feb 6 baseline ■ Positive

	<i>Retail/rec</i>	<i>Grocery/pharm</i>	<i>Parks</i>	<i>Transit stations</i>	<i>Workplaces</i>	<i>Residential</i>
<b>IN +4</b>		<b>10</b>	<b>183</b>	<b>10</b>	<b>-29</b>	<b>6</b>
<b>IA -1</b>		<b>25</b>	<b>238</b>	<b>9</b>	<b>-27</b>	<b>5</b>
<b>KS -2</b>		<b>8</b>	<b>150</b>	<b>13</b>	<b>-28</b>	<b>6</b>
<b>KY -3</b>		<b>10</b>	<b>113</b>	<b>-1</b>	<b>-30</b>	<b>7</b>
<b>LA -9</b>		<b>4</b>	<b>8</b>	<b>-15</b>	<b>-29</b>	<b>8</b>
<b>ME +5</b>		<b>15</b>	<b>219</b>	<b>10</b>	<b>-28</b>	<b>6</b>
<b>MD -10</b>		<b>1</b>	<b>136</b>	<b>-28</b>	<b>-37</b>	<b>11</b>
<b>MA -15</b>		<b>-5</b>	<b>76</b>	<b>-47</b>	<b>-39</b>	<b>12</b>
<b>MI +1</b>		<b>11</b>	<b>303</b>	<b>-7</b>	<b>-32</b>	<b>6</b>
<b>MN -6</b>		<b>11</b>	<b>180</b>	<b>-35</b>	<b>-34</b>	<b>8</b>
<b>MS +3</b>		<b>7</b>	<b>46</b>	<b>7</b>	<b>-28</b>	<b>6</b>
<b>MO +2</b>		<b>12</b>	<b>119</b>	<b>-4</b>	<b>-28</b>	<b>6</b>
<b>MT +12</b>		<b>28</b>	<b>182</b>	<b>28</b>	<b>-24</b>	<b>3</b>
<b>NE +1</b>		<b>14</b>	<b>188</b>	<b>12</b>	<b>-28</b>	<b>6</b>
<b>NV -13</b>		<b>1</b>	<b>-9</b>	<b>-30</b>	<b>-36</b>	<b>9</b>

Source: [Google Mobility Reports](https://www.google.com/covid19/mobility/), TrendMacro calculations

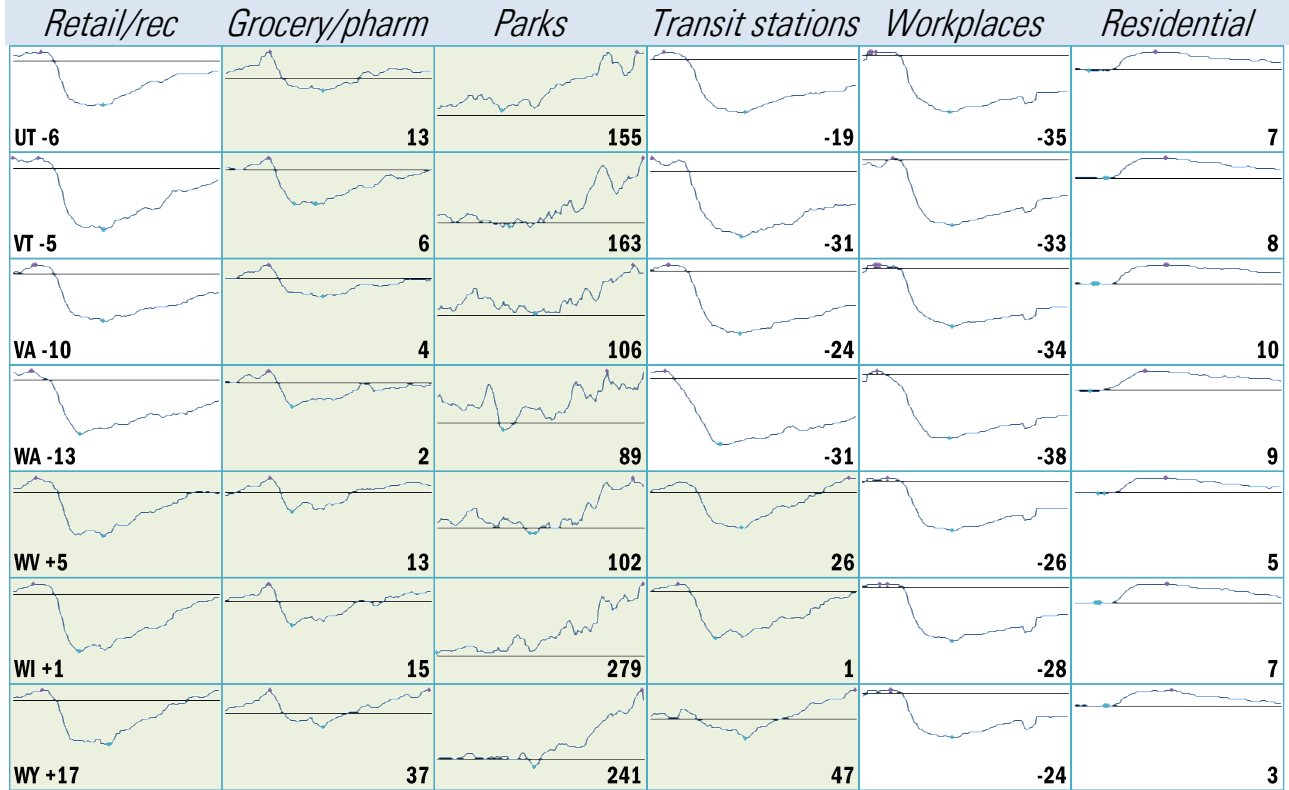


Make America move again: Mobility from Feb 5 vs Jan 3 – Feb 6 baseline ■ Positive

	<i>Retail/rec</i>	<i>Grocery/pharm</i>	<i>Parks</i>	<i>Transit stations</i>	<i>Workplaces</i>	<i>Residential</i>
<b>NH +5</b>		<b>10</b>	<b>190</b>	<b>-9</b>	<b>-31</b>	<b>9</b>
<b>NJ -20</b>		<b>3</b>	<b>138</b>	<b>-38</b>	<b>-36</b>	<b>12</b>
<b>NM -8</b>		<b>8</b>	<b>45</b>	<b>-2</b>	<b>-31</b>	<b>9</b>
<b>NY -25</b>		<b>1</b>	<b>62</b>	<b>-45</b>	<b>-37</b>	<b>11</b>
<b>NC -8</b>		<b>5</b>	<b>86</b>	<b>-20</b>	<b>-32</b>	<b>8</b>
<b>ND +4</b>		<b>11</b>	<b>177</b>	<b>2</b>	<b>-25</b>	<b>4</b>
<b>OH -1</b>		<b>9</b>	<b>206</b>	<b>3</b>	<b>-30</b>	<b>6</b>
<b>OK +1</b>		<b>11</b>	<b>87</b>	<b>8</b>	<b>-28</b>	<b>6</b>
<b>OR -8</b>		<b>6</b>	<b>111</b>	<b>-16</b>	<b>-34</b>	<b>8</b>
<b>PA -7</b>		<b>5</b>	<b>124</b>	<b>-24</b>	<b>-33</b>	<b>8</b>
<b>RI -0</b>		<b>3</b>	<b>231</b>	<b>-30</b>	<b>-33</b>	<b>9</b>
<b>SC -1</b>		<b>8</b>	<b>67</b>	<b>9</b>	<b>-29</b>	<b>7</b>
<b>SD +16</b>		<b>37</b>	<b>376</b>	<b>42</b>	<b>-24</b>	<b>4</b>
<b>TN -0</b>		<b>8</b>	<b>98</b>	<b>-7</b>	<b>-30</b>	<b>7</b>
<b>TX -16</b>		<b>-3</b>	<b>8</b>	<b>-26</b>	<b>-35</b>	<b>12</b>

Source: [Google Mobility Reports](#), TrendMacro calculations

Make America move again: Mobility from Feb 5 vs Jan 3 – Feb 6 baseline ■ Positive



Source: [Google Mobility Reports](https://www.google.com/covid19/mobility/), TrendMacro calculations