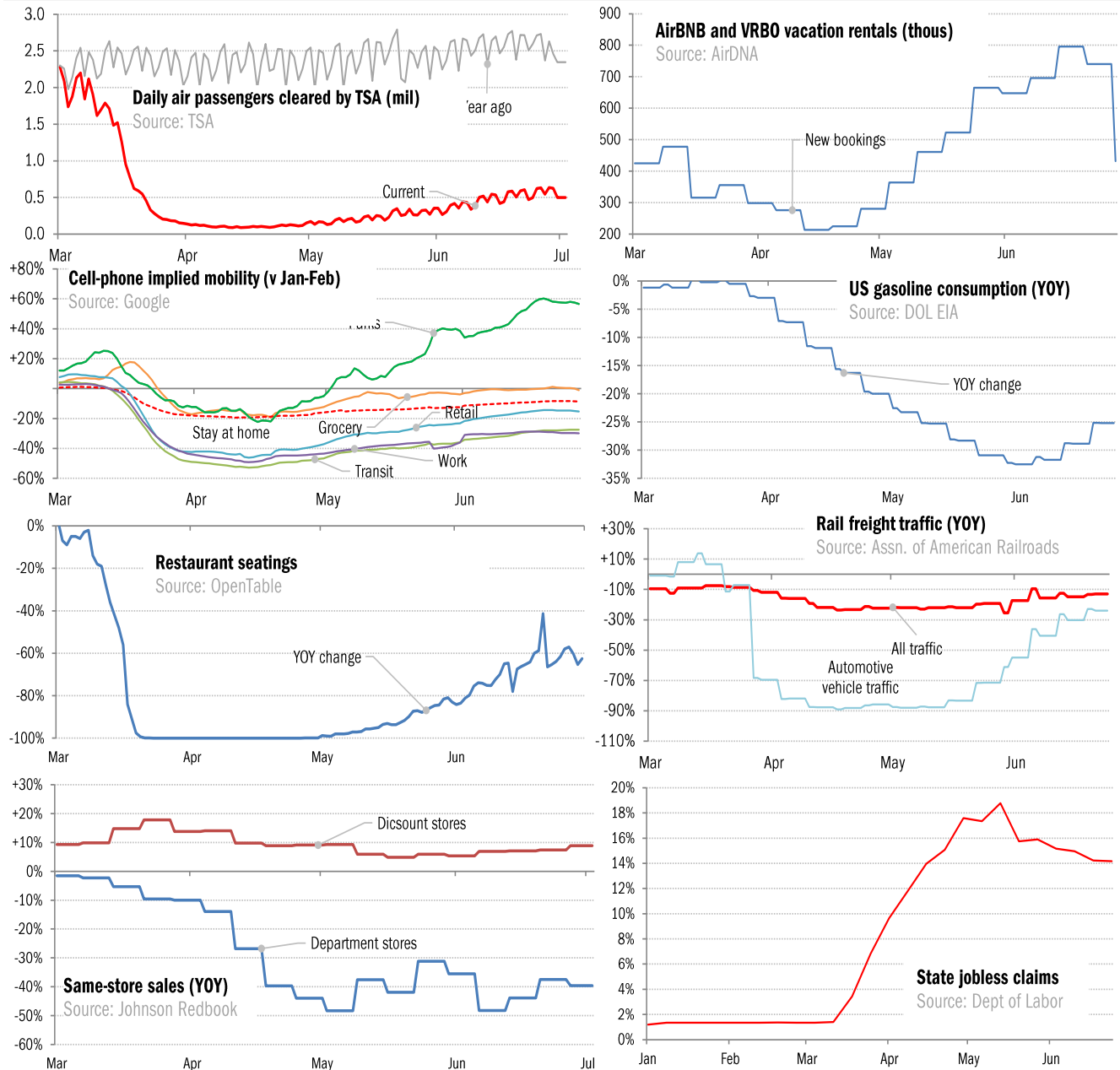


Data Insights: High-Frequency Post-Virus US Recovery Monitor

Thursday, July 2, 2020

The US high-frequency macro data dashboard

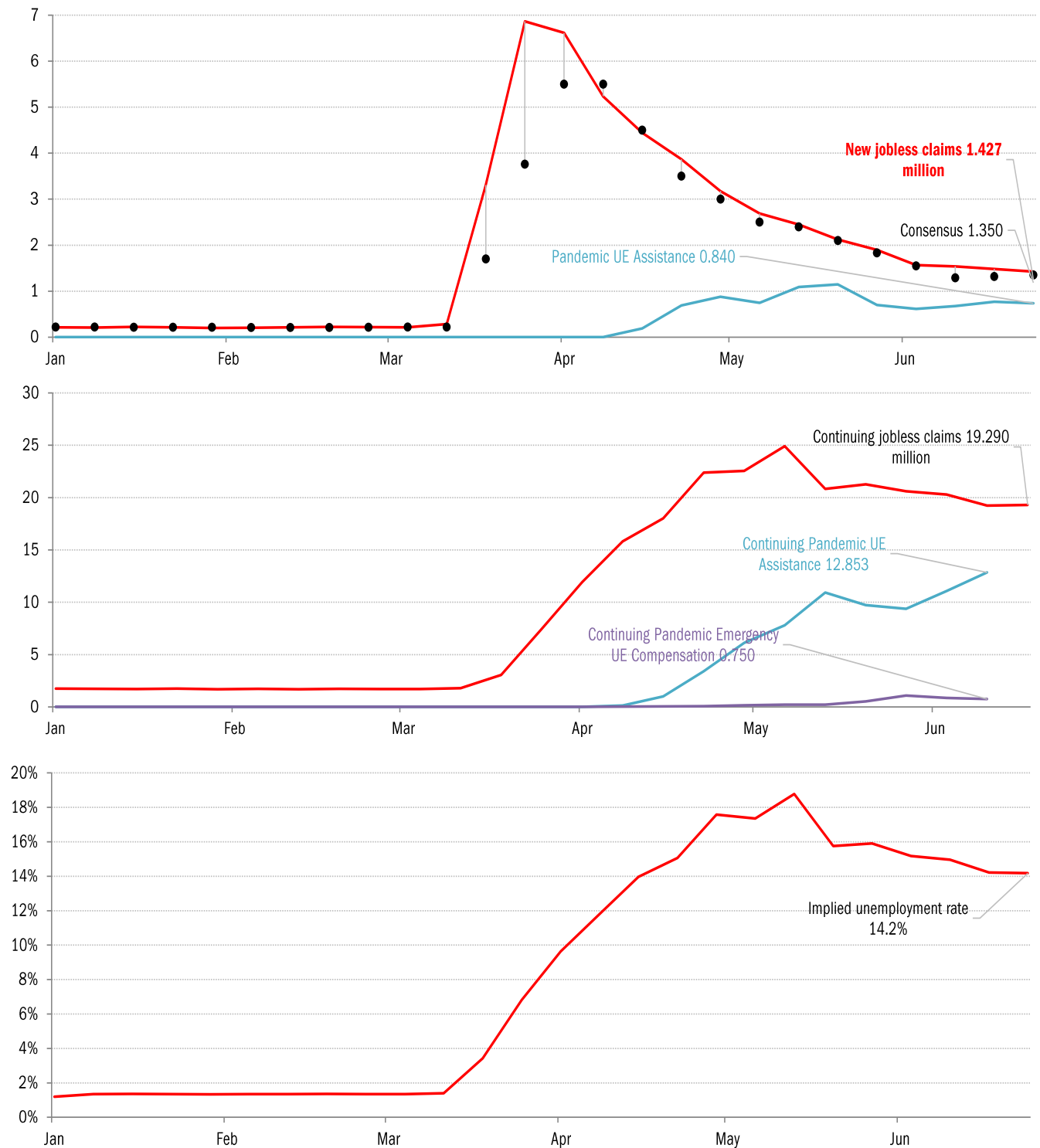
(state level and other detail in subsequent charts)



Source: As indicated, TrendMacro calculations

Copyright 2020 Trend Macrolytics LLC. All rights reserved. This document is not to be forwarded to individuals or organizations not authorized by Trend Macrolytics LLC to receive it. For information purposes only; not to be deemed to be recommendations for buying or selling specific securities or to constitute personalized investment advice. Derived from sources deemed to be reliable, but no warranty is made as to accuracy.

High-frequency view of the US labor market: weekly unemployment claims (millions)

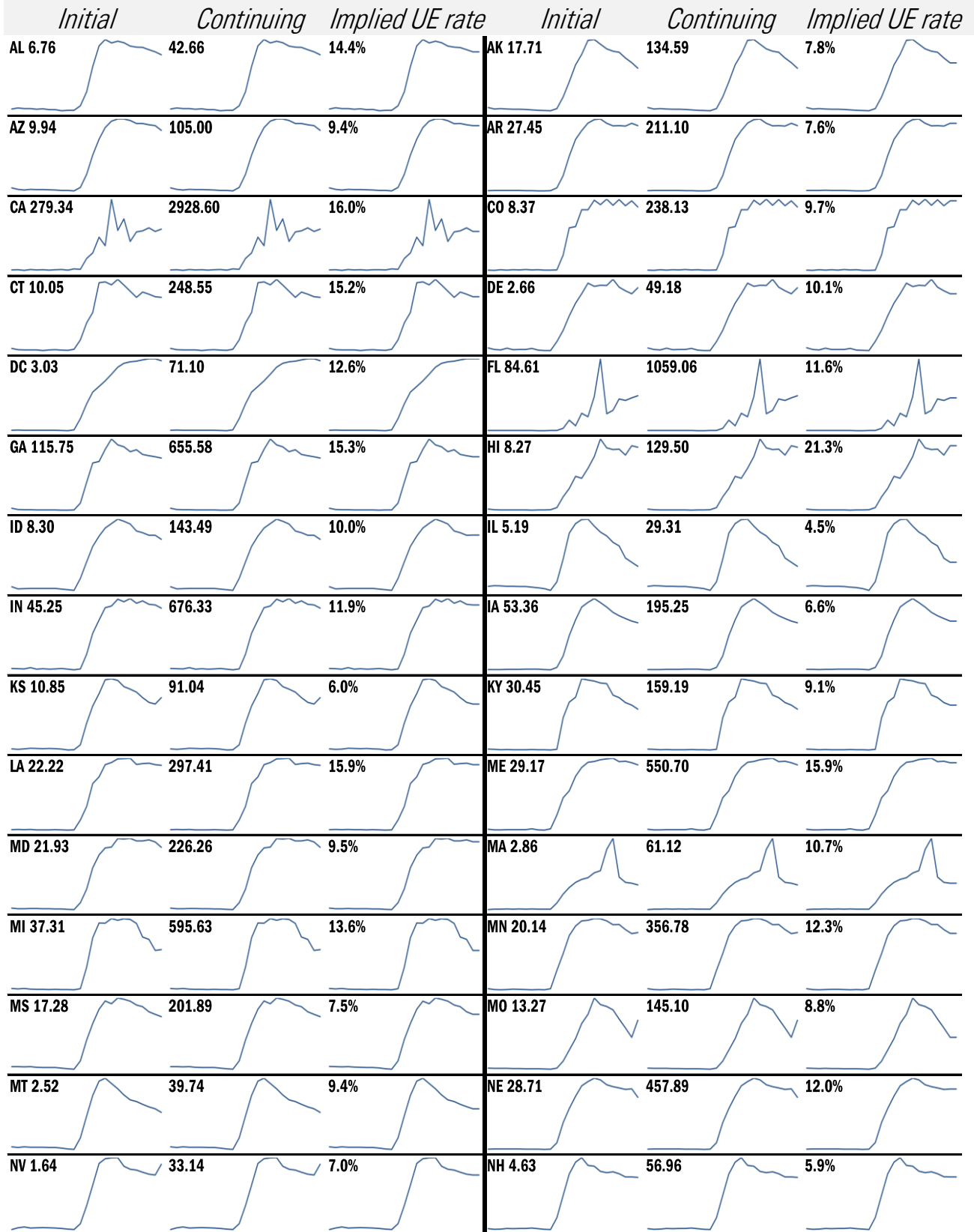


Source: Department of Labor, Bloomberg, TrendMacro calculations

For more information contact us:

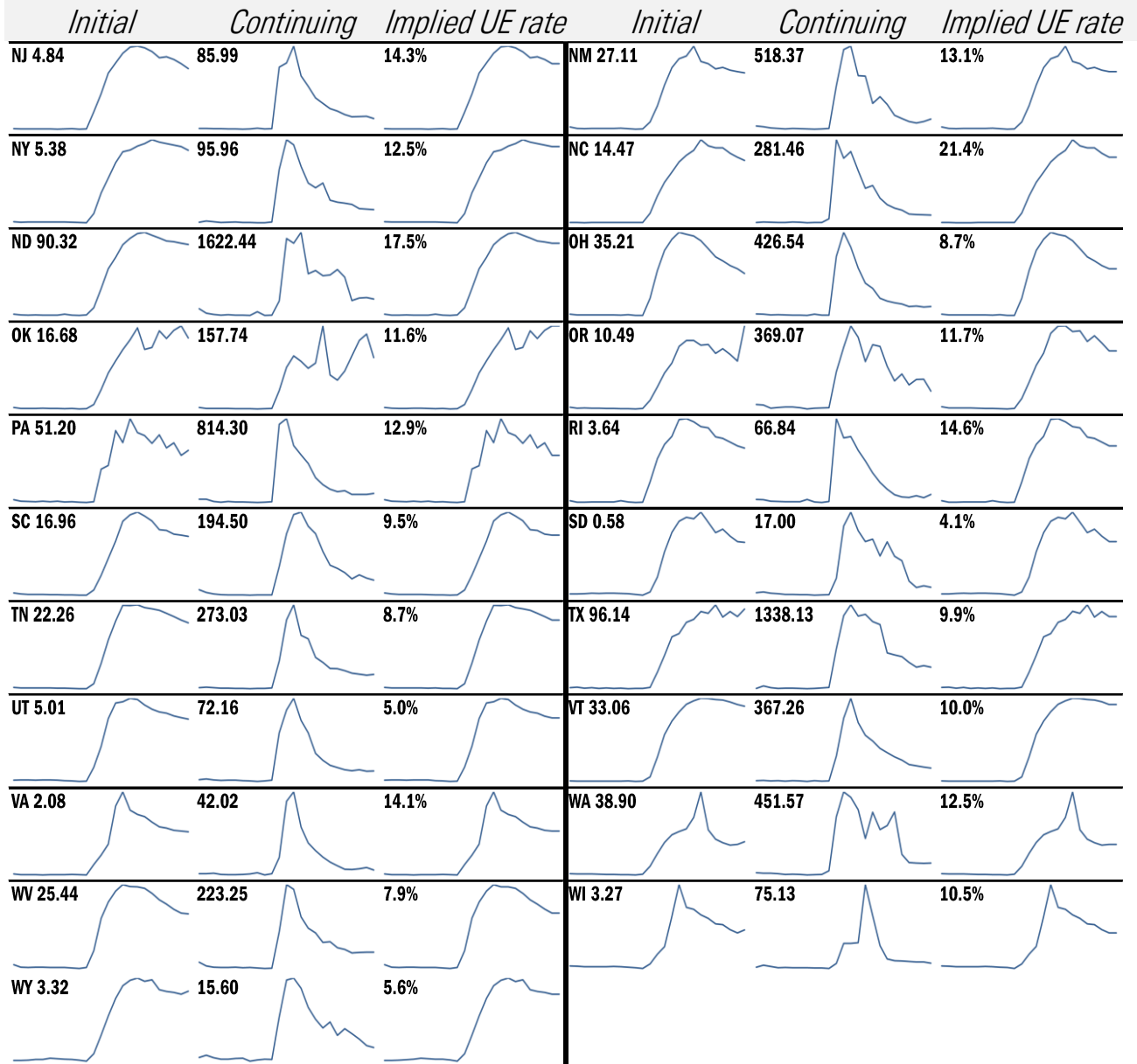
Donald Luskin: 312 273 6766 don@trendmacro.com
 Thomas Demas: 704 552 3625 tdemas@trendmacro.com

State by state unemployment insurance claims (thousands)



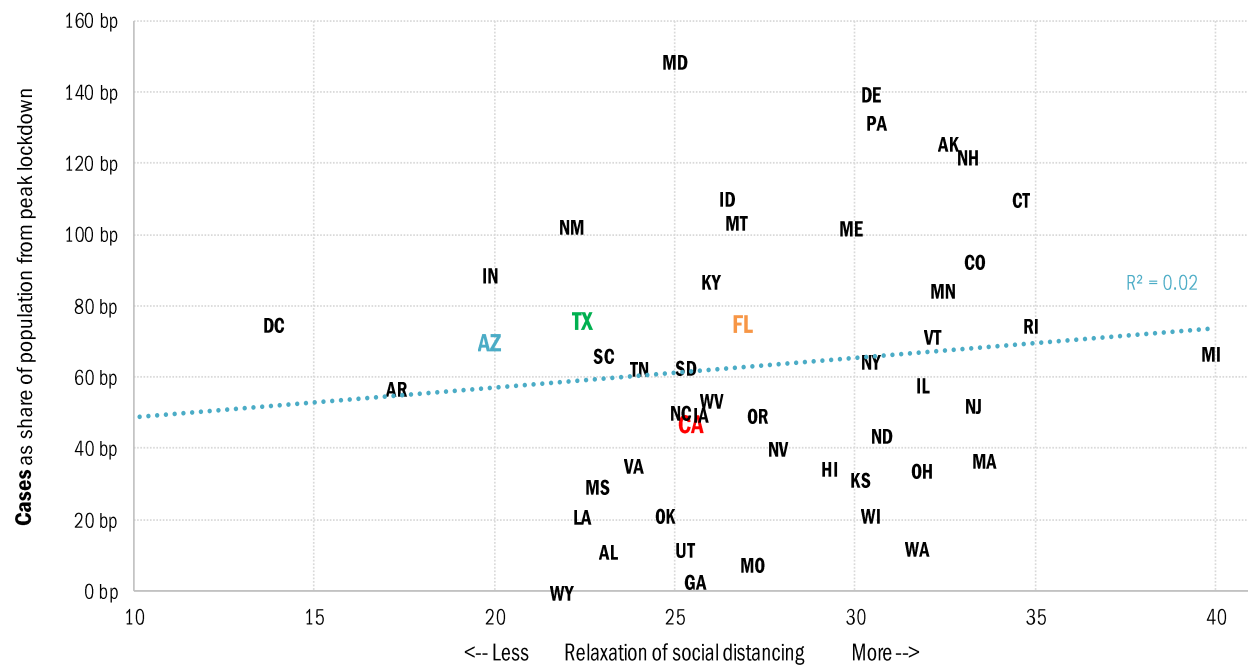
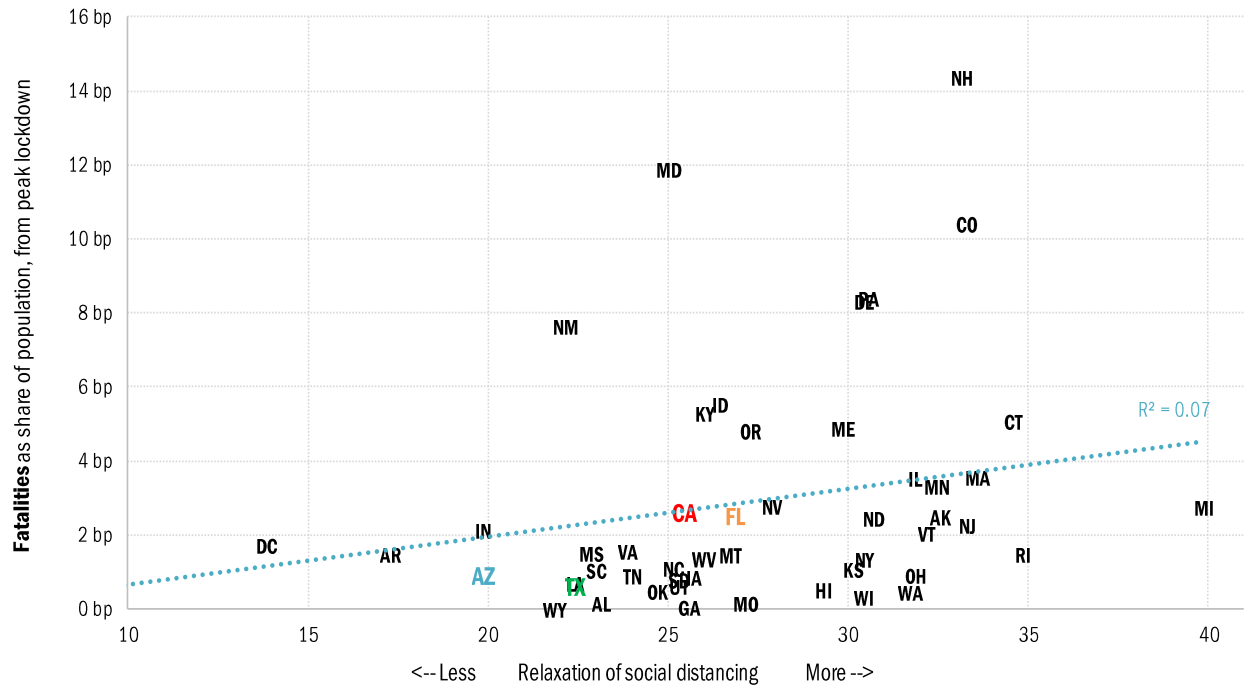
Source: Department of Labor, TrendMacro calculations

State by state unemployment insurance claims (thousands)



Source: Department of Labor, TrendMacro calculations

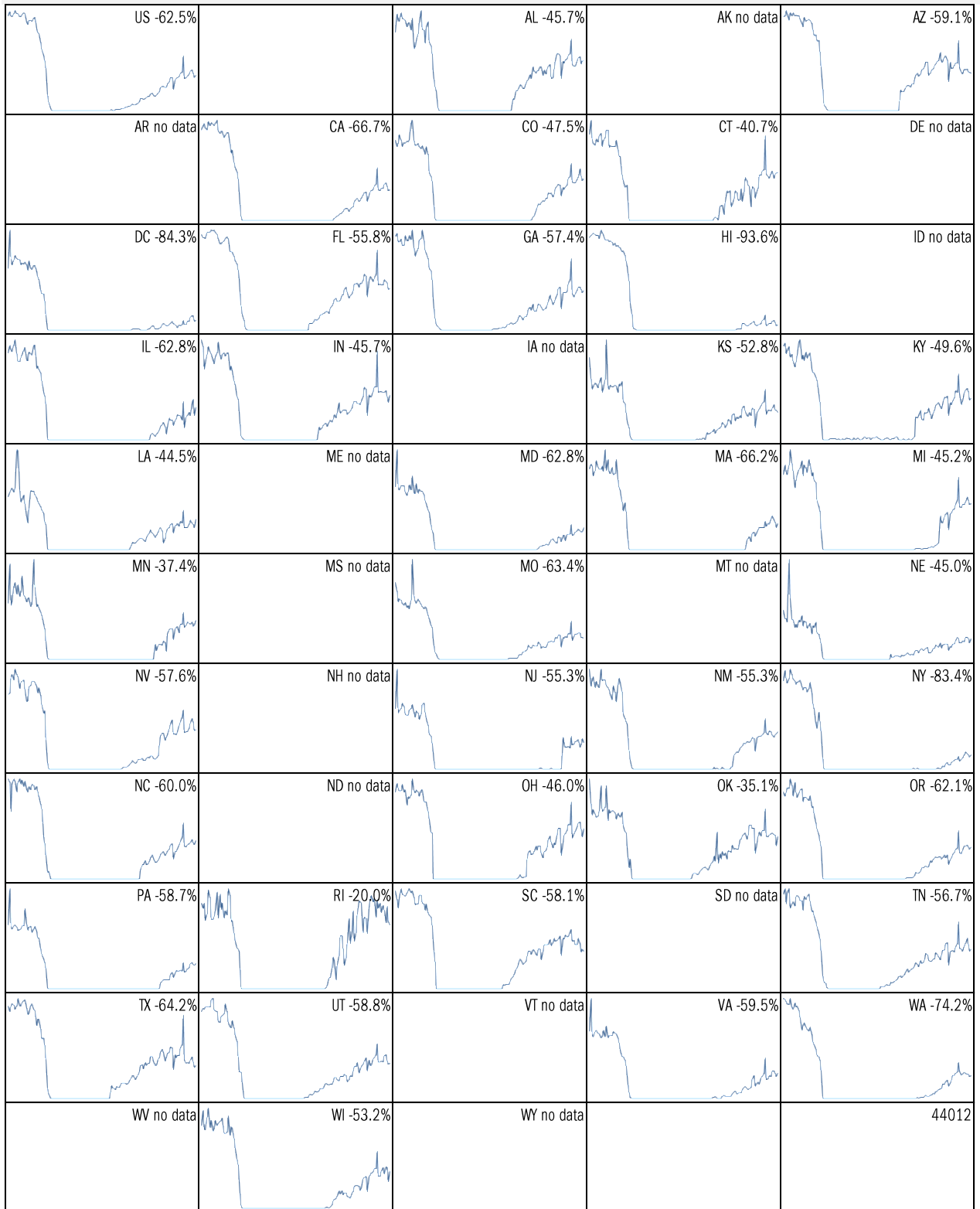
Assessing the risk of a "second wave" after opening up the US economy
 New Covid-2019 fatalities and cases *versus* change in mobility as measured by cell-phone data
Ideal: low or negative correlation between cases/fatalities and relaxation of social distancing



Source: [University of Maryland COVID-19 Impact Analysis Platform](#), TrendMacro calculations

Make America eat again:

YOY change in seated diners in restaurants Feb 18 to present ■ Positive



Source: [Open Table](#), TrendMacro calculations

Make America move again: Mobility from Feb 5 vs Jan 3 – Feb 6 baseline ■ Positive

	<i>Retail/rec</i>	<i>Grocery/pharm</i>	<i>Parks</i>	<i>Transit stations</i>	<i>Workplaces</i>	<i>Time at home</i>
US -15		-1	57	-27	-30	9
AL -8		2	40	4	-24	7
AK +10		14	167	-2	-21	4
AZ -22		-9	-14	-29	-32	10
AR -4		7	107	2	-24	6
CA -30		-7	9	-37	-34	12
CO -12		1	93	-27	-31	8
CT -10		-3	108	-22	-30	9
DE -3		4	89	-15	-28	8
DC -50		-20	-30	-64	-49	16
FL -22		-9	-10	-39	-29	9
GA -12		-2	41	-32	-30	9
HI -34		-21	-33	-59	-32	12
ID +6		17	226	18	-24	2
IL -16		-2	83	-28	-30	9

Source: [Google Mobility Reports](https://www.google.com/covid19/mobility/), TrendMacro calculations

Make America move again: Mobility from Feb 5 vs Jan 3 – Feb 6 baseline ■ Positive

	<i>Retail/rec</i>	<i>Grocery/pharm</i>	<i>Parks</i>	<i>Transit stations</i>	<i>Workplaces</i>	<i>Residential</i>
IN -1		5	165	6	-24	5
IA -4		18	215	6	-22	5
KS -4		3	160	11	-24	5
KY -7		7	114	-4	-26	6
LA -15		-2	-4	-19	-27	8
ME +1		10	213	7	-24	5
MD -16		-3	119	-30	-35	12
MA -19		-8	96	-47	-36	11
MI -4		4	216	-12	-28	6
MN -10		7	184	-34	-30	8
MS -3		3	34	4	-23	6
MO -2		7	126	-6	-24	5
MT +9		24	209	22	-20	1
NE -5		6	179	9	-24	6
NV -16		-3	-11	-33	-34	9

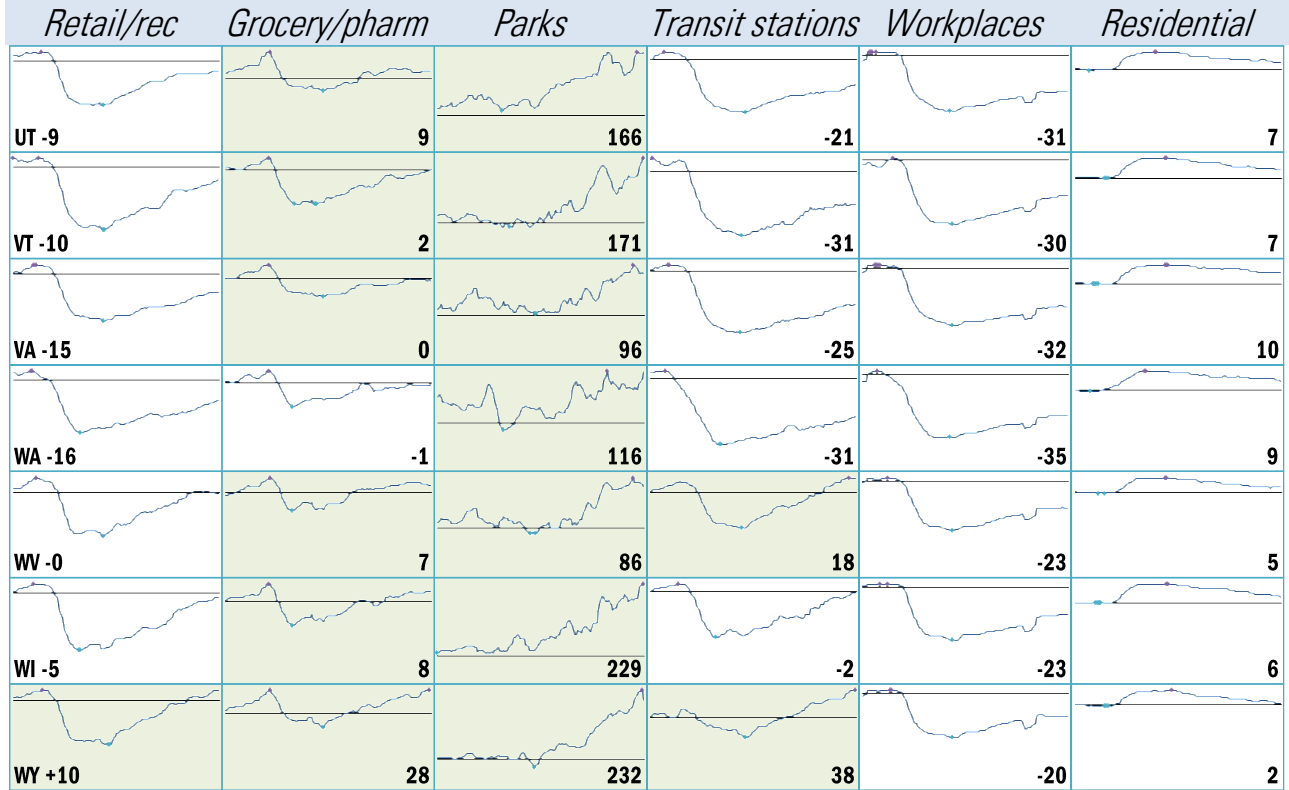
Source: [Google Mobility Reports](https://www.google.com/covid19/mobility/), TrendMacro calculations

Make America move again: Mobility from Feb 5 vs Jan 3 – Feb 6 baseline ■ Positive

	<i>Retail/rec</i>	<i>Grocery/pharm</i>	<i>Parks</i>	<i>Transit stations</i>	<i>Workplaces</i>	<i>Residential</i>
NH -1		5	200	-9	-27	8
NJ -25		-1	138	-40	-35	12
NM -12		4	40	-7	-28	9
NY -30		-2	65	-45	-36	11
NC -11		3	81	-21	-28	7
ND +1		6	189	2	-19	3
OH -6		3	171	0	-26	6
OK -2		7	88	5	-24	5
OR -11		4	126	-17	-31	7
PA -13		-1	104	-26	-30	8
RI -4		-3	252	-31	-30	8
SC -4		5	68	6	-25	6
SD +9		28	335	36	-19	4
TN -4		4	93	-9	-25	6
TX -18		-5	3	-27	-32	11

Source: [Google Mobility Reports](#), TrendMacro calculations

Make America move again: Mobility from Feb 5 vs Jan 3 – Feb 6 baseline ■ Positive



Source: [Google Mobility Reports](https://www.google.com/covid19/mobility/), TrendMacro calculations