

## Data Insights: Covid-2019 US Re-Opening Monitor

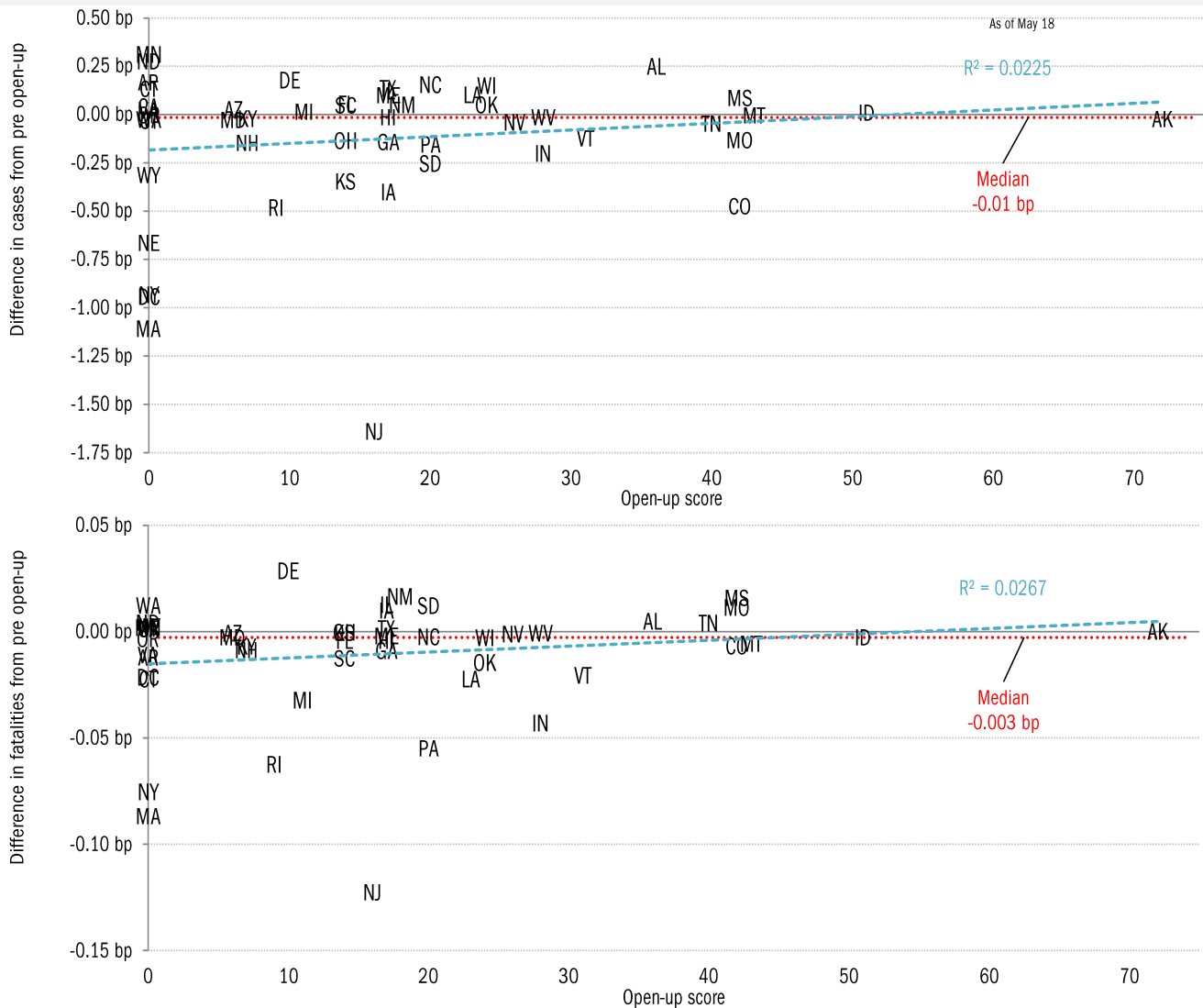
Tuesday, May 19, 2020

Does opening up increase confirmed cases or fatalities?

Open-up score *vs* difference between average last 7 days and 7 days prior to first open-up

Score is sum of days since lifting any of six lockdown categories scored by IHME:

*Travel restricted Stay-at-home Schools closed Gatherings restricted Any business closed Non-essential bus. closed*



Source: [Covid Tracking Project](#), [IHME](#), TrendMacro calculations

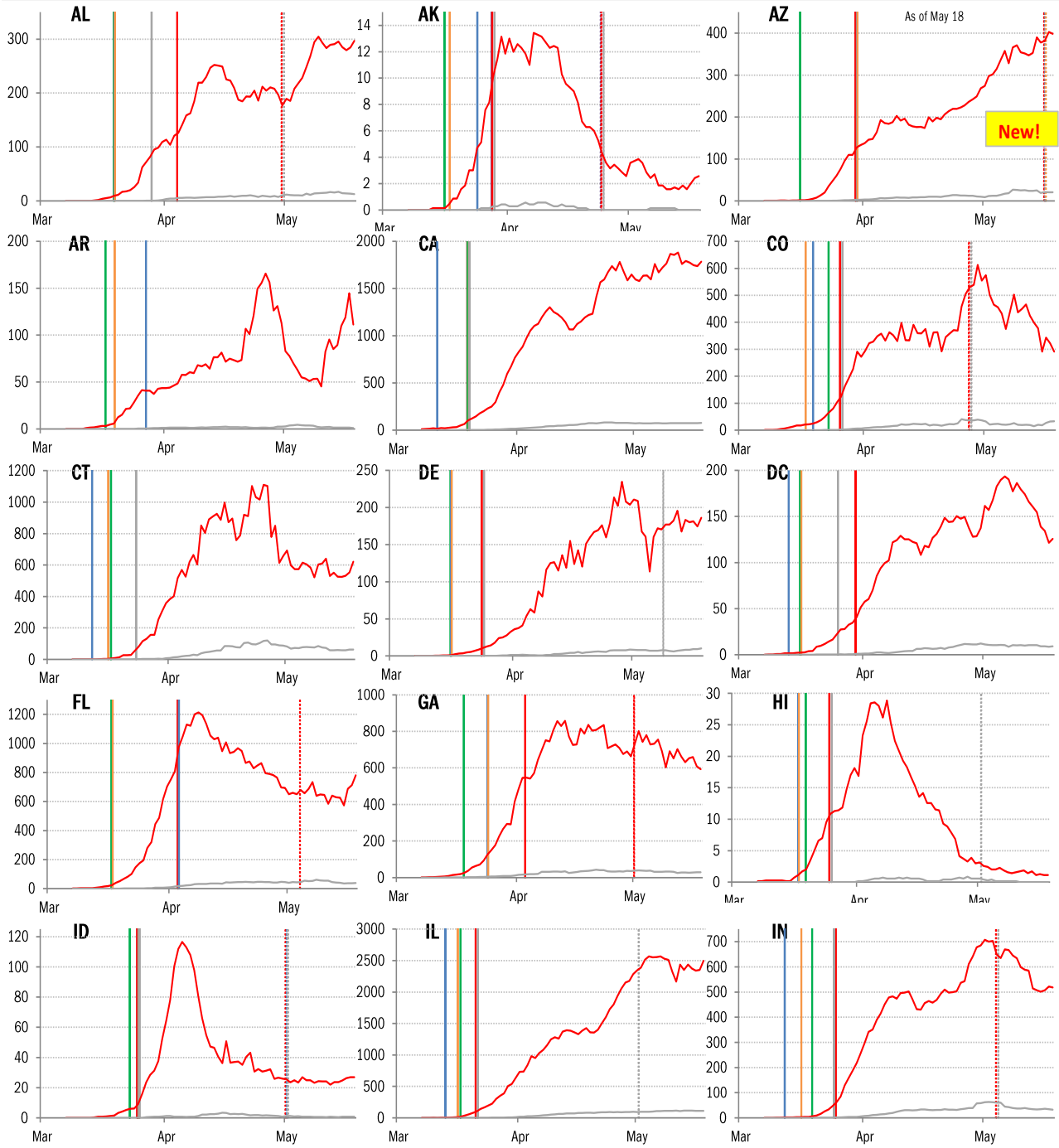
### For more information contact us:

Donald Luskin: 312 273 6766 [don@trendmacro.com](mailto:don@trendmacro.com) Thomas Demas: 704 552 3625 [tdemas@trendmacro.com](mailto:tdemas@trendmacro.com)

Copyright 2020 Trend Macrolytics LLC. All rights reserved. This document is not to be forwarded to individuals or organizations not authorized by Trend Macrolytics LLC to receive it. For information purposes only; not to be deemed to be recommendations for buying or selling specific securities or to constitute personalized investment advice. Derived from sources deemed to be reliable, but no warranty is made as to accuracy.

US states daily **confirmed cases** and fatalities (7-day MA)  
 versus dates of lockdown mandates (solid vertical lines) and open-up (dotted lines)

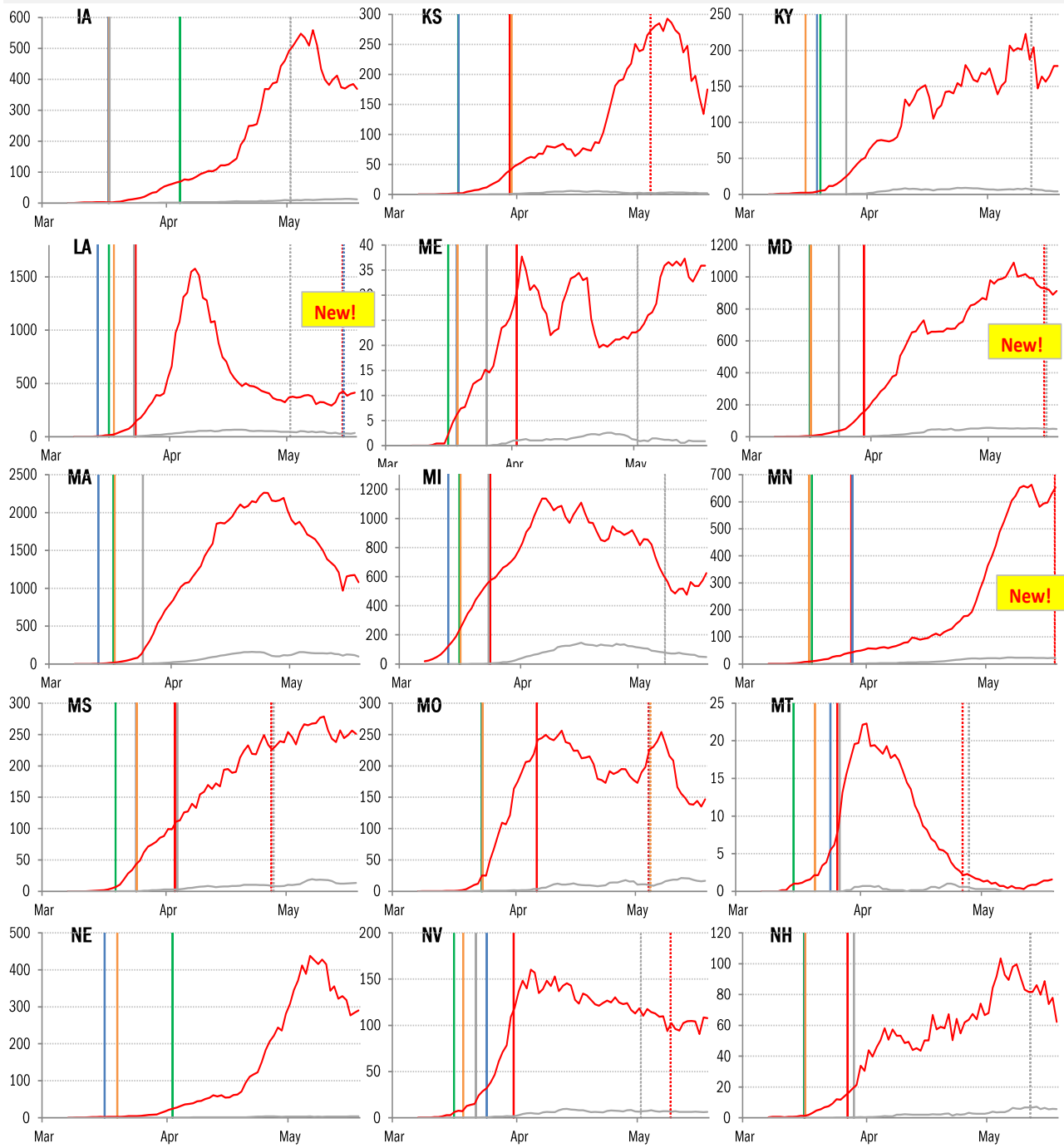
*Travel restricted Stay-at-home Schools closed Gatherings restricted Any business closed Non-essential bus. closed*



Source: [Covid Tracking Project](#), [IHME](#), TrendMacro calculations

US states daily confirmed cases and fatalities vs dates of lockdown mandates and open-up

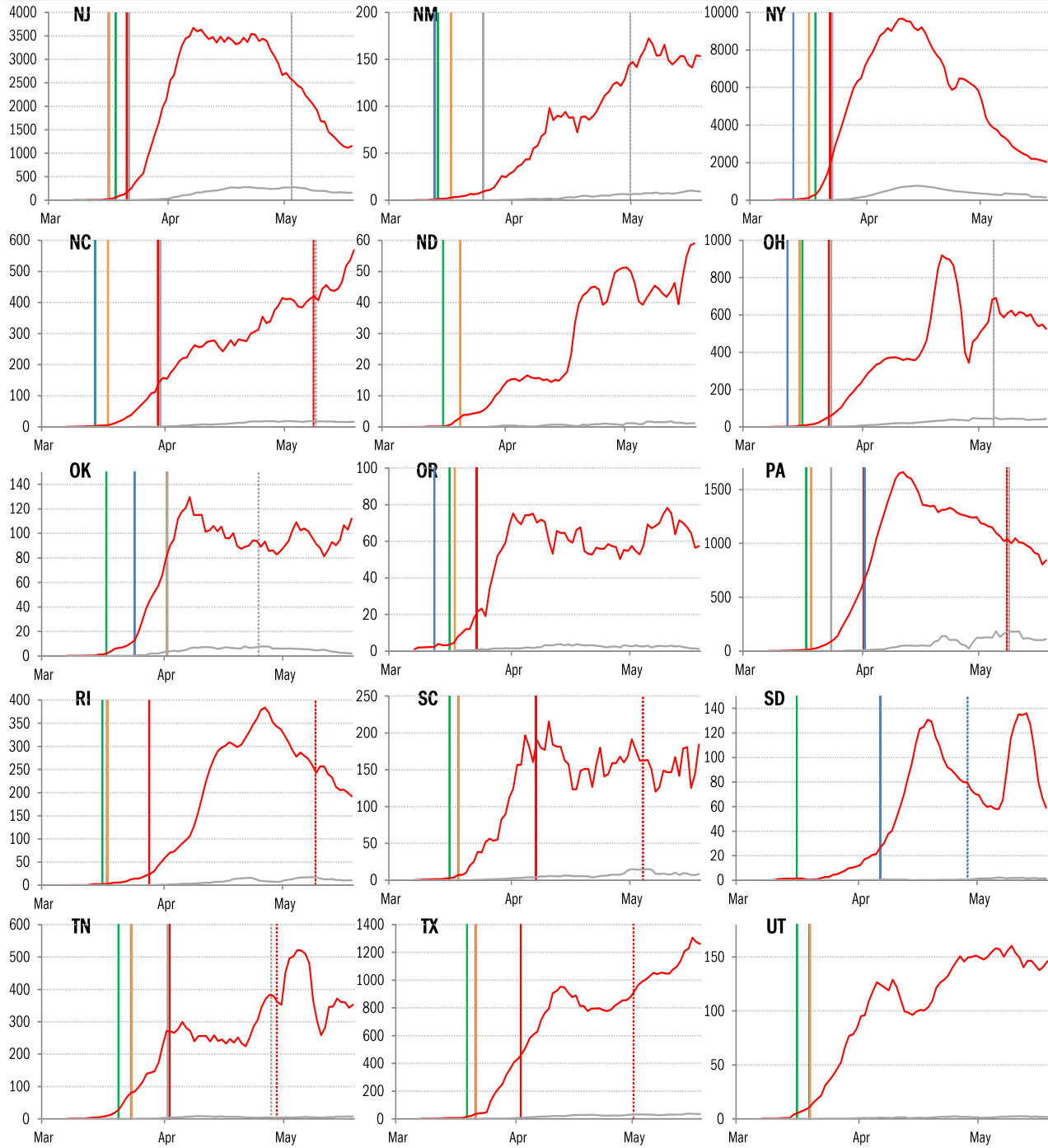
*Travel restricted Stay-at-home Schools closed Gatherings restricted Any business closed Non-essential bus. closed*



Source: [Covid Tracking Project](#), [IHME](#), TrendMacro calculations

# US states daily confirmed cases and fatalities vs dates of lockdown mandates and open-up

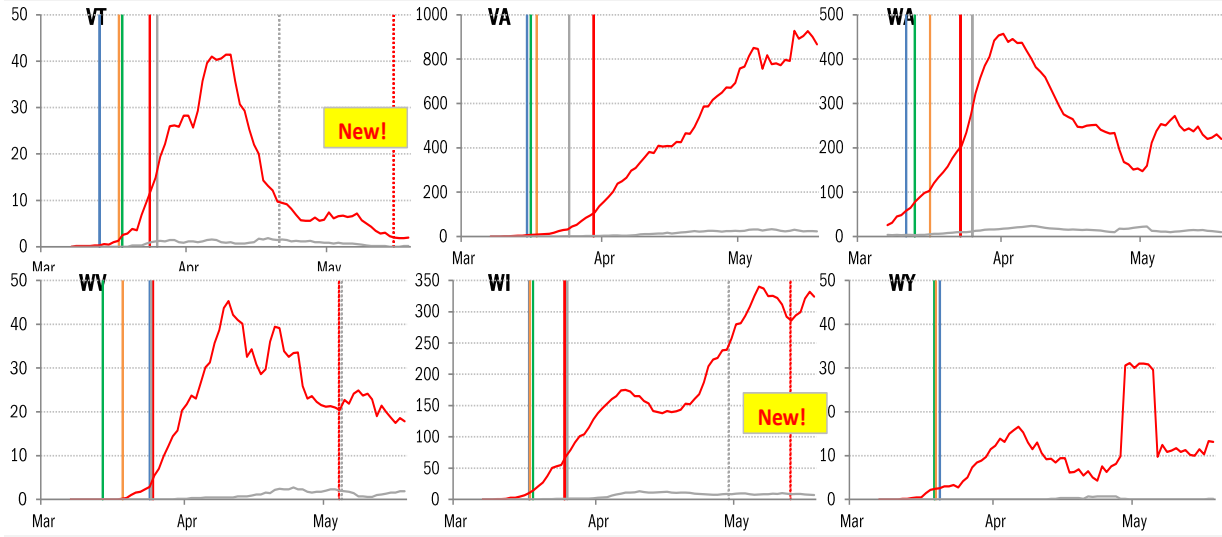
Travel restricted Stay-at-home Schools closed Gatherings restricted Any business closed Non-essential bus. closed



Source: [Covid Tracking Project](#), [IHME](#), TrendMacro calculations

US states daily confirmed cases and fatalities vs dates of lockdown mandates and open-up

Travel restricted Stay-at-home Schools closed Gatherings restricted Any business closed Non-essential bus. closed



Source: [Covid Tracking Project](#), [IHME](#), TrendMacro calculations