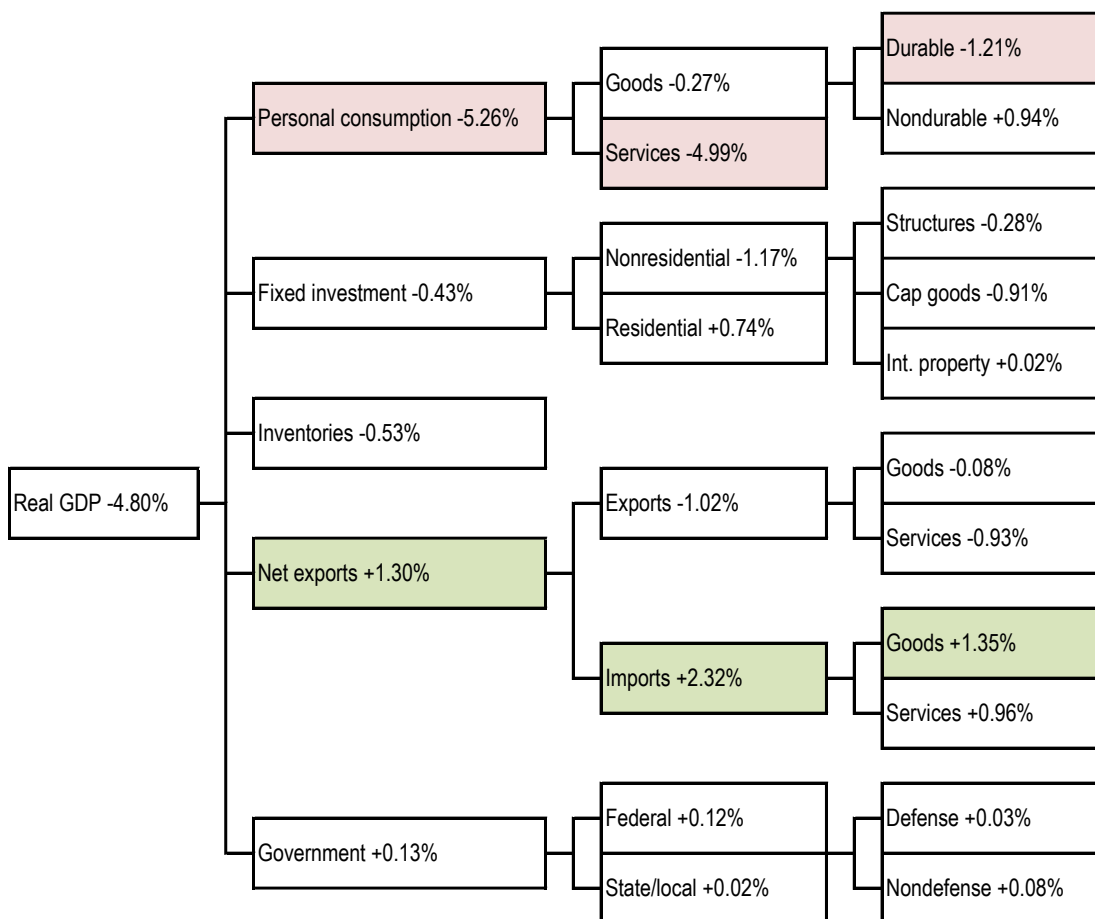




Wednesday, April 29, 2020

Contributions to real, sequential quarter change, SAAR      Biggest change per detail-level: ■ positive ■ negative

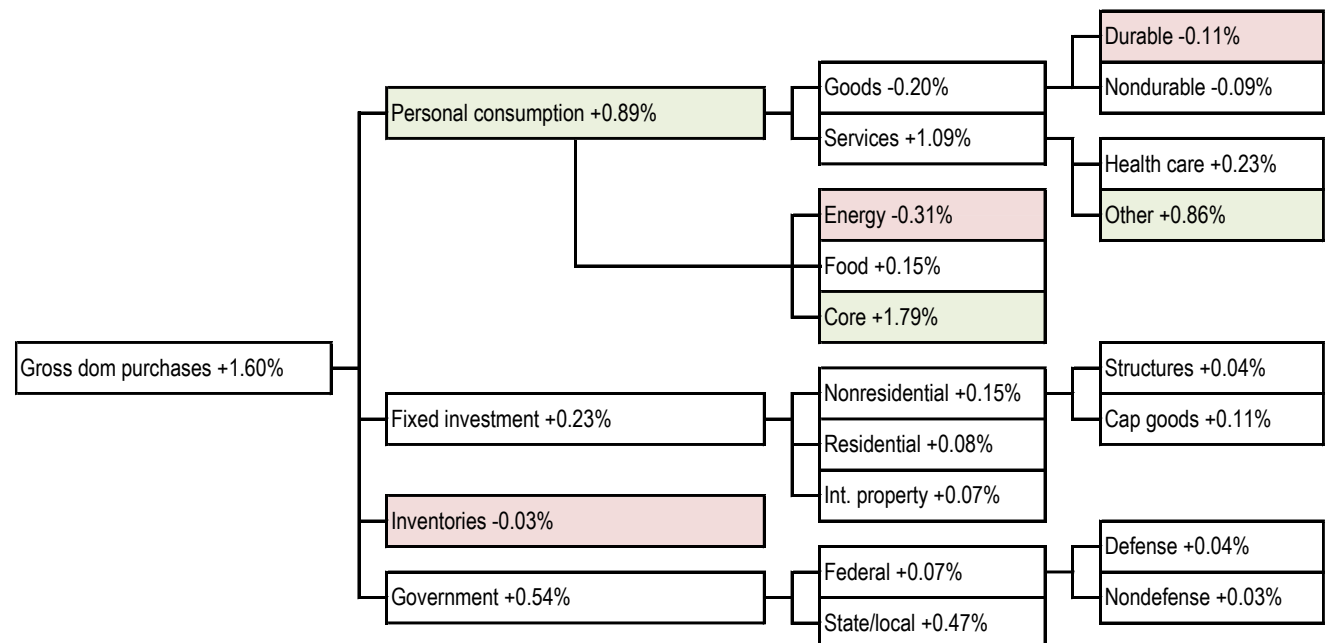


**For more information contact us:**

Copyright 2020 Trend Macrolytics LLC. All rights reserved. This document is not to be forwarded to individuals or organizations not authorized by Trend Macrolytics LLC to receive it. For information purposes only; not to be deemed to be recommendations for buying or selling specific securities or to constitute personalized investment advice. Derived from sources deemed to be reliable, but no warranty is made as to accuracy.

## Price index data: what you need to know -- where did the inflation come from?

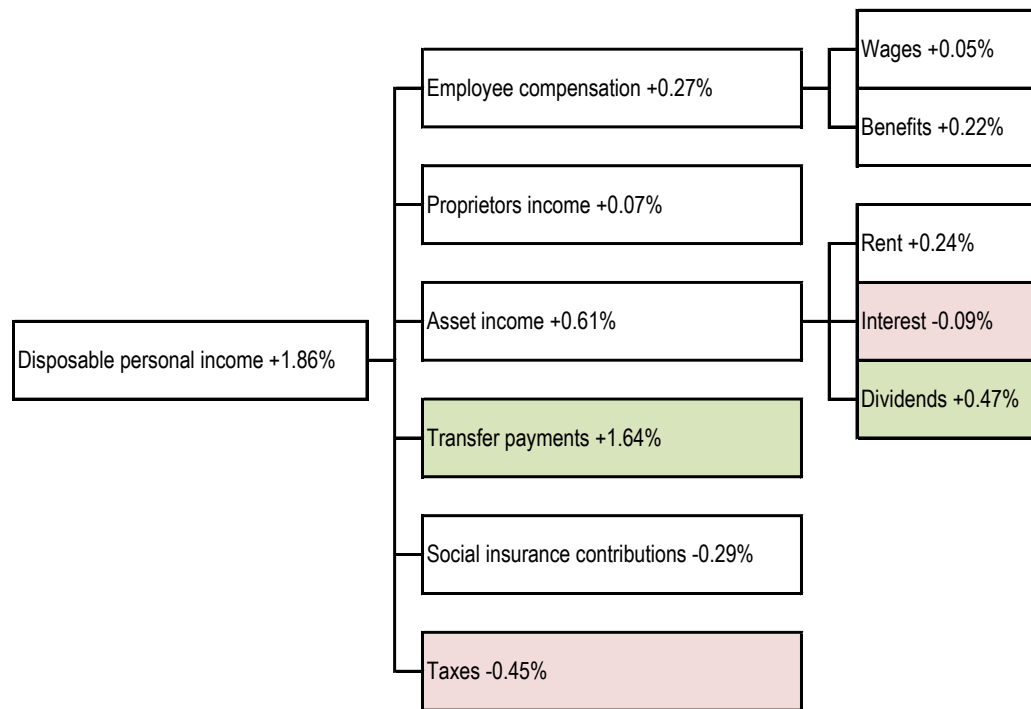
Contribution to sequential quarter change, SAAR    Biggest change per detail-level: ■ positive ■ negative



Source: Bureau of Economic Analysis, TrendMacro calculations

## Personal income data: what you need to know -- where did the growth come from?

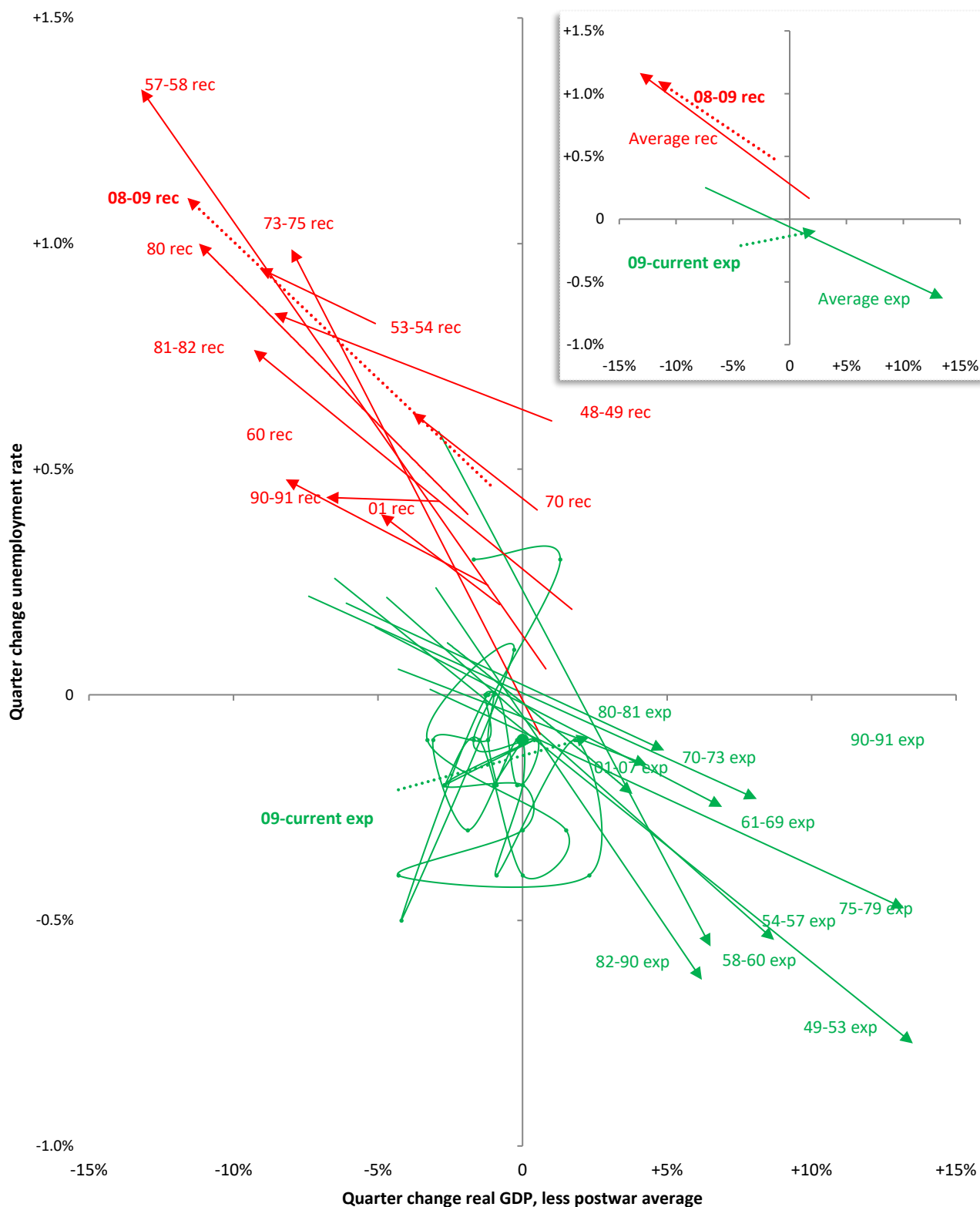
Contribution to nominal, seq quarter change, SAAR    Biggest change per detail-level: ■ positive ■ negative



Source: Bureau of Economic Analysis, TrendMacro calculations

# Broken Okun's Law: real growth required to change unemployment

— Expansion — Recession Linear trend, plus monthly plots for 09-current expansion • Latest



Source: Bureau of Economic Analysis, BLS Current Population Survey, TrendMacro calculations

## The Zarnowitz Law: severity of output loss in recession, versus vigor of recovery

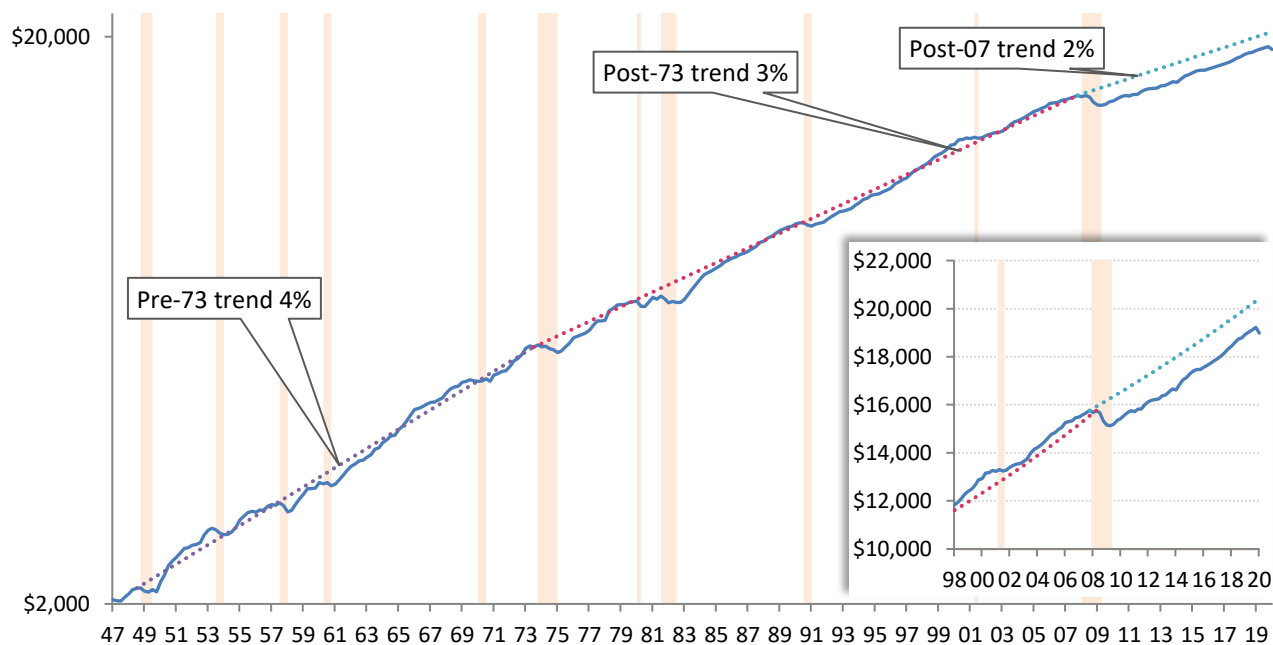
◆ Actual --- Regression for recessions 1948-2001 ▲ Theoretical for current recovery based on regression



Source: Bureau of Economic Analysis, National Bureau of Economic Research, TrendMacro calculations

## The plucked string theory: GDP reverts to trend after perturbation

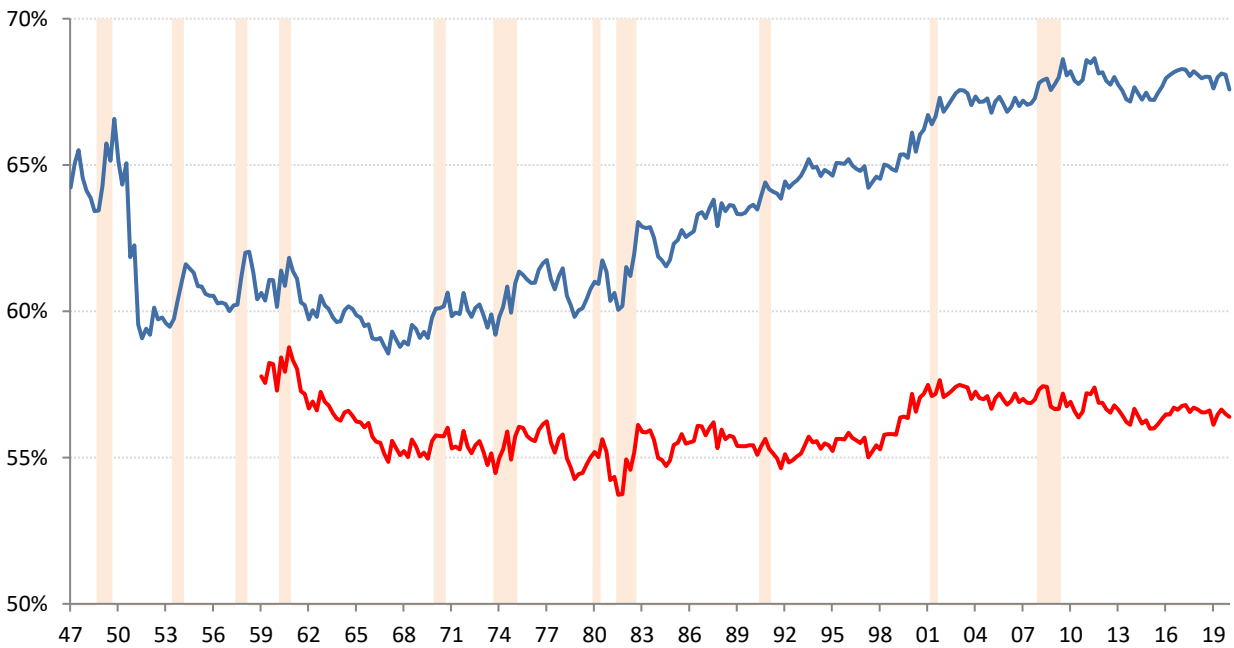
— Real GDP, USD billions, log scale --- '47-'74 3.99% --- '74-'07 trend 3.02% --- Post-'07 trend Recession



Source: Bureau of Economic Analysis, National Bureau of Economic Research, TrendMacro calculations

## "New normal" watch: personal consumption share of nominal GDP

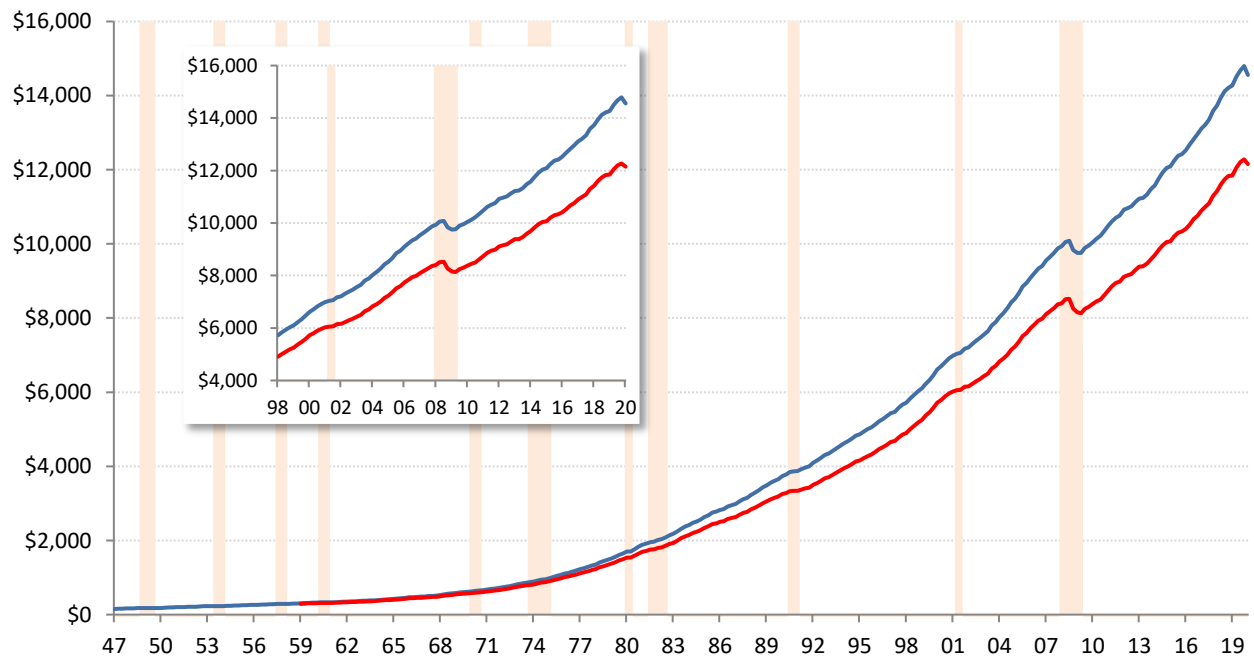
— Personal consumption expenditures — Ex-health care services — Recession



Source: Bureau of Economic Analysis, National Bureau of Economic Research, TrendMacro calculations

## "New normal" watch: nominal personal consumption expenditures

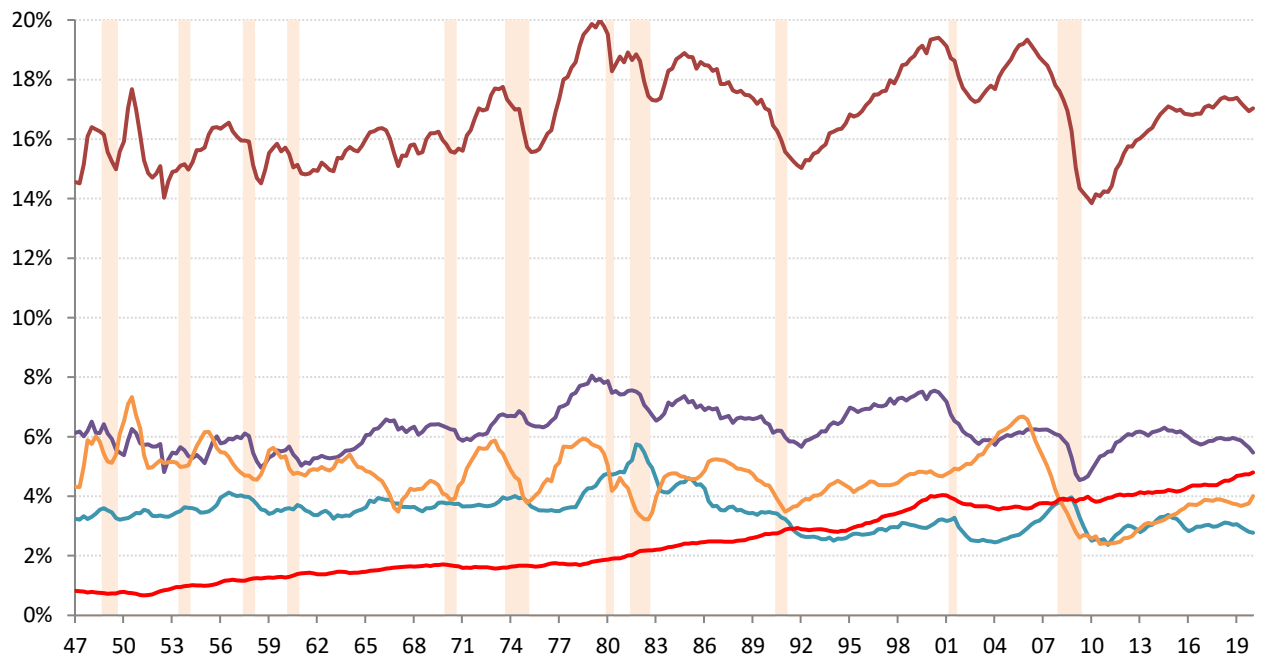
USD billions — Personal consumption expenditures — Ex-health care services — Recession



Source: Bureau of Economic Analysis, National Bureau of Economic Research, TrendMacro calculations

## Capital on strike: fixed investment share of nominal GDP

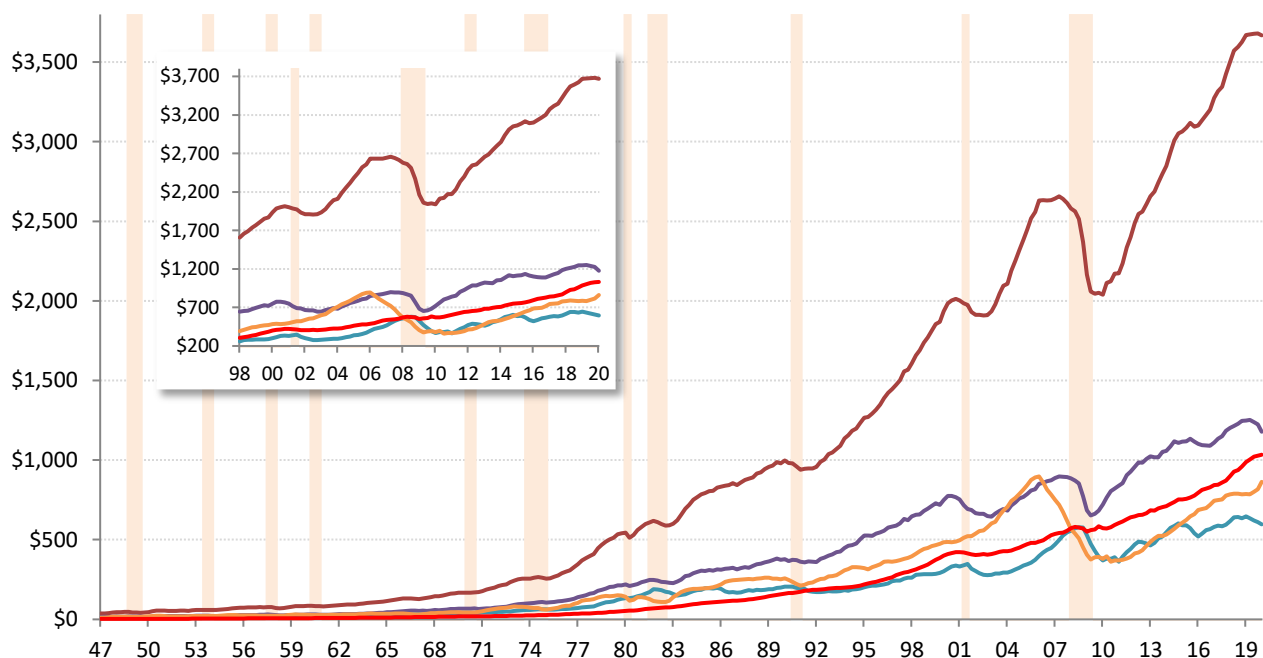
Fixed investment Equipment Int. property Nonresidential structures Housing Recession



Source: Bureau of Economic Analysis, National Bureau of Economic Research, TrendMacro calculations

## Capital at work: nominal fixed investment

USD billions Fixed investment Equipment Int. property Nonresidential structures Housing



Source: Bureau of Economic Analysis, National Bureau of Economic Research, TrendMacro calculations