





Data Insights: Jobs

Friday, April 5, 2019

Today's jobs data: what you need to know

Non-farm payrolls	Change Mar: +196	Revision Feb: +13	Revision Jan: +1	
Private payrolls	Change Mar: +182	Revision Feb: +3	Revision Jan: -11	
Employment	Change Mar: -201			
Unemployment	Change Mar: -24			
Long-term unemployment	Change Mar: +31			
Civilian labor force	Change Mar: -224	0.62 million above trend	10.7% of leavers unemployed	
Unemployment rate	Mar: 3.81%	Change Mar: -0.01%		
Underemployment rate	Mar: 7.3%	Change Mar: unch		
Participation rate	Mar: 63.0%	Change Mar: -0.2%		
UE adjusted for participation	Mar: 8.2%	Change Mar: +0.28%		
Average weeks unemployed	Mar: 22.2	Change Mar: +0.5		
% longterm unemployed	Mar: 21.1%	Change Mar: +0.7%		
Aggregate hours worked index	Mar: 111.1	Change Mar: +0.5%	Revision Feb: unch	
Average hourly earnings	Mar: 0.14%	Change Mar: -0.22%	Revision Feb: -0.04%	
Aggregate weekly earnings	Mar: 147.1	Change Mar: +0.5%	Revision Feb: unch	
Monthly job-finding probability	Mar: 34.5%	Change Mar: -3.7%		
Monthly separation probability	Mar: 1.7%	Change Mar: -0.0%		
% involuntary part-time	Mar: 2.9%	Change Mar: +0.1%		
"Household" vs "Payroll" jobs	Change Mar: +232			

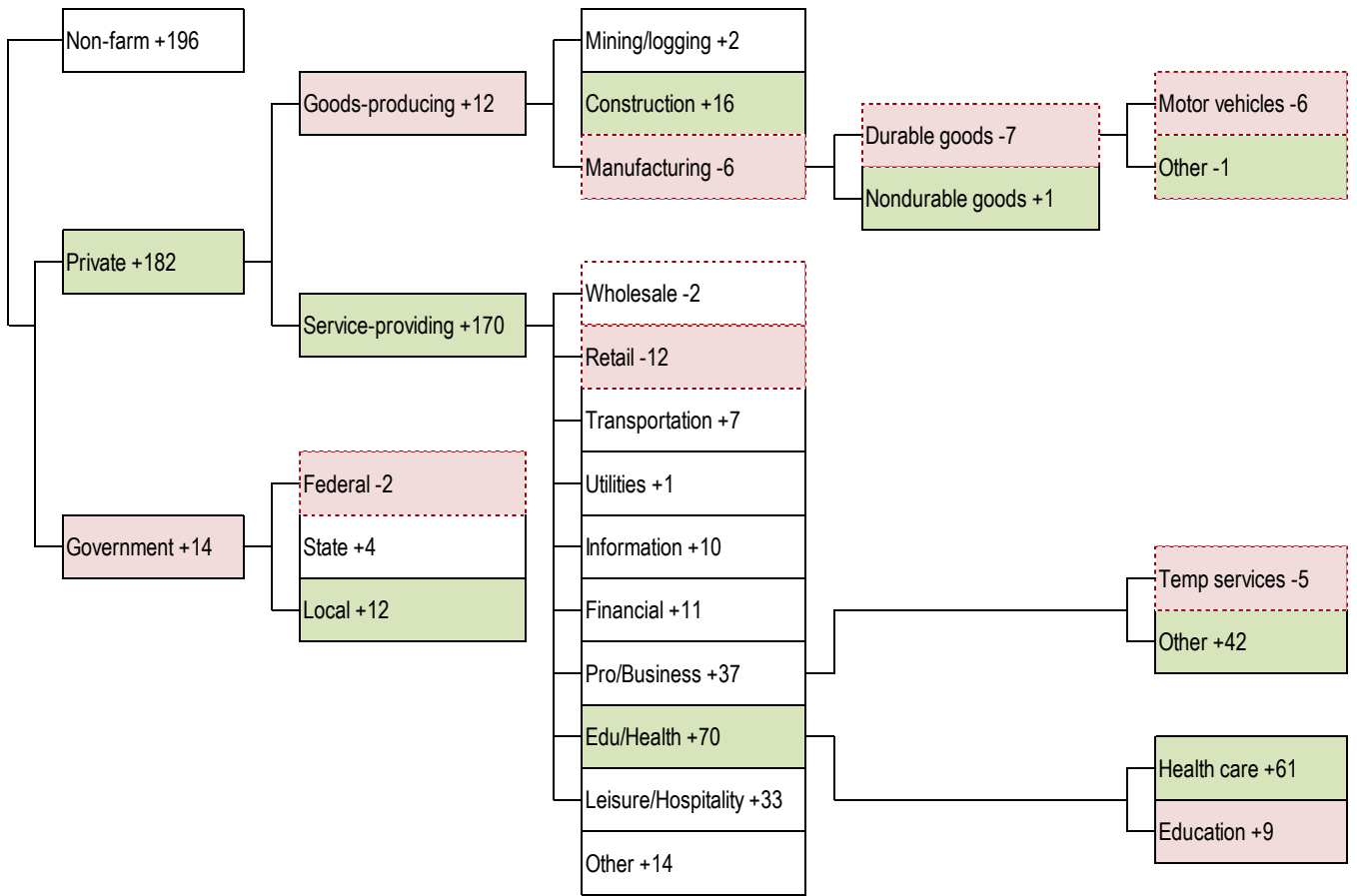
Source: Bureau of Labor Statistics, TrendMacro calculations

For more information contact us:

Donald Luskin: 312 273 6766 don@trendmacro.com
 Thomas Demas: 704 552 3625 tdemas@trendmacro.com

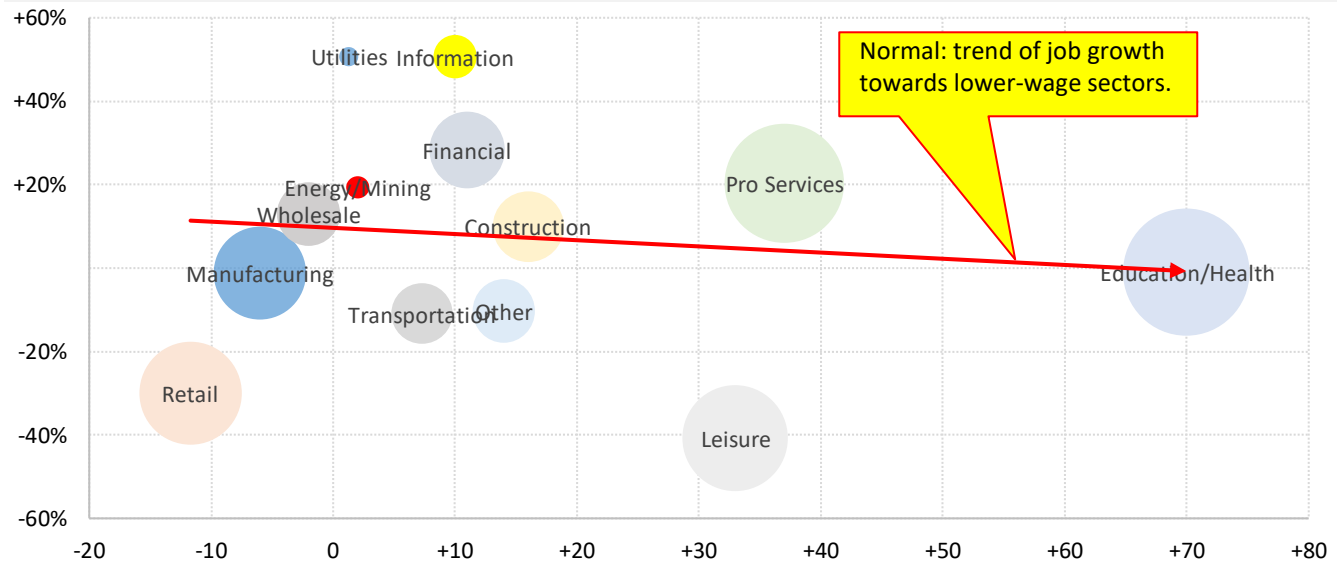
Today's payroll data: what you need to know -- where did the jobs come from?

Sequential month change, thousands SA --- Net job losses Biggest change per detail module: ■ best ■ worst



Where is the pay coming from?

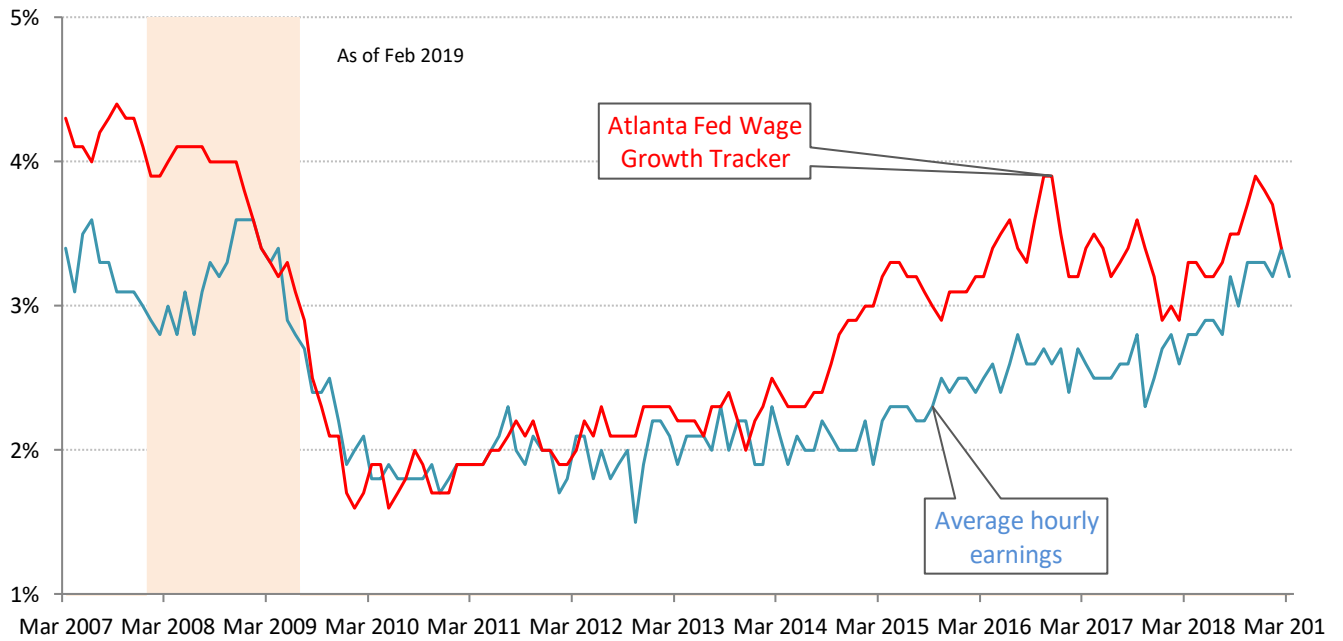
Vertical: Hourly wages vs average Horizontal: Payrolls change this month Circle size: Share of all employment



Source: BLS, TrendMacro calculations

Solving the wage-growth puzzle

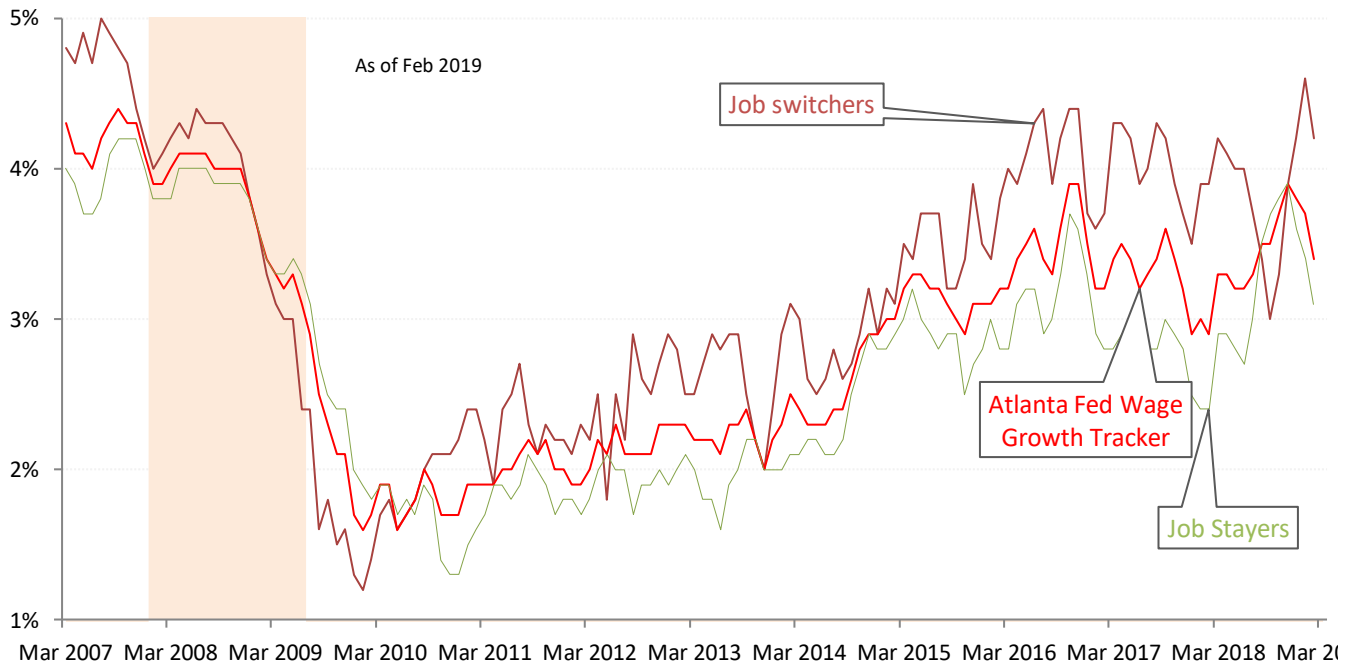
YOY average hourly earnings growth Atlanta Fed Wage Growth Index Recession



Source: BLS Current Employment Statistics, Atlanta Federal Reserve Bank, TrendMacro calculations

The wages of dynamism

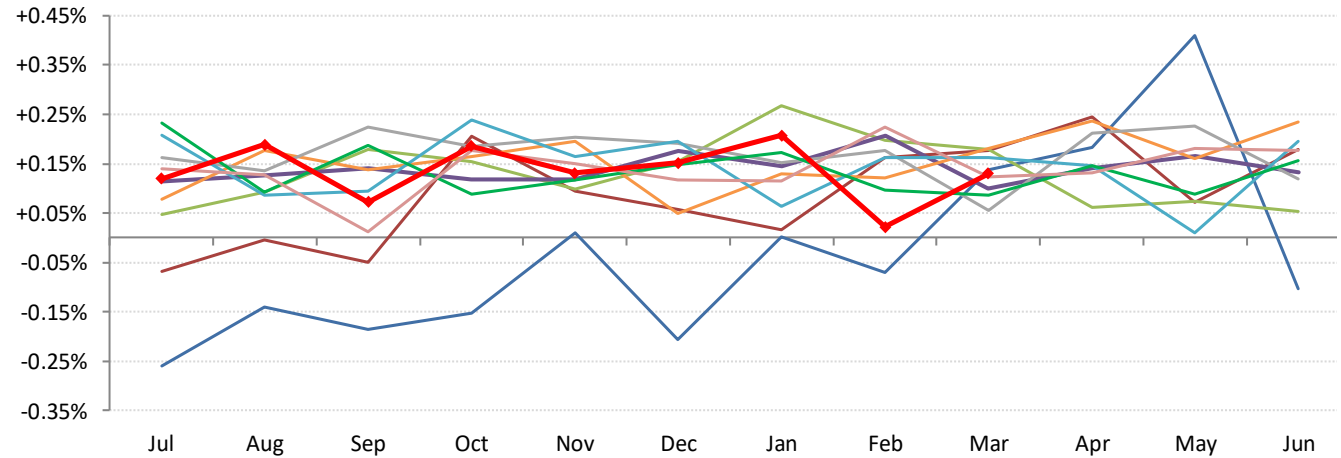
YOY wage growth for steady employees, versus those who change jobs Recession



Source: Atlanta Federal Reserve Bank, TrendMacro calculations

The payroll cycle in the Not So Great Expansion following the Great Recession

Growth MOM from July — 2009-10 — 10-11 — 11-12 — 12-13 — 13-14 — 14-15 — 15-16 — 16-17 — 17-18 — 2018-19

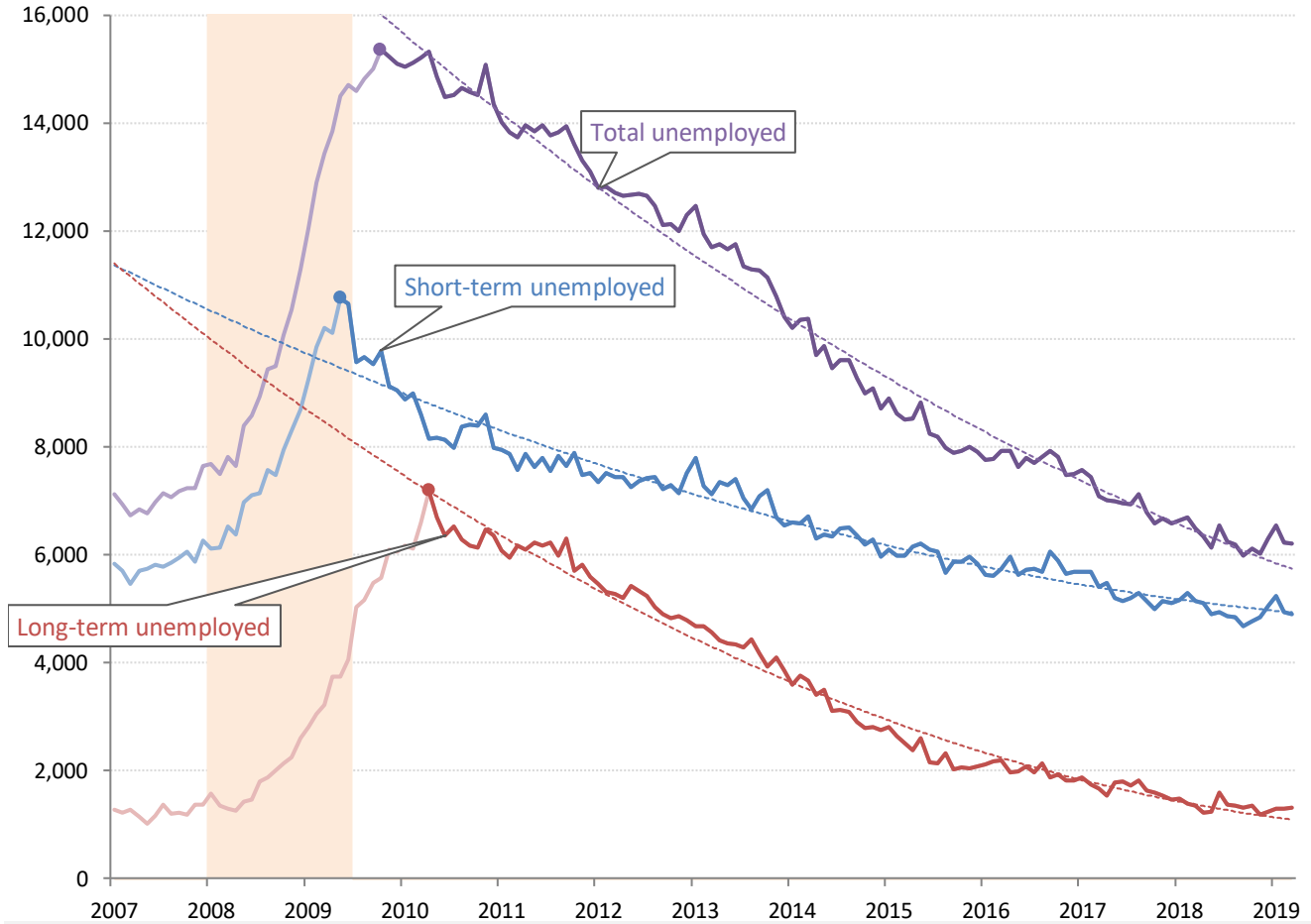


Source: BLS Current Population Survey, TrendMacro calculations

The ultimate jobless recovery is becoming jobful

Unemployment: thousands Short-term = <27 weeks Long-term = >27 weeks

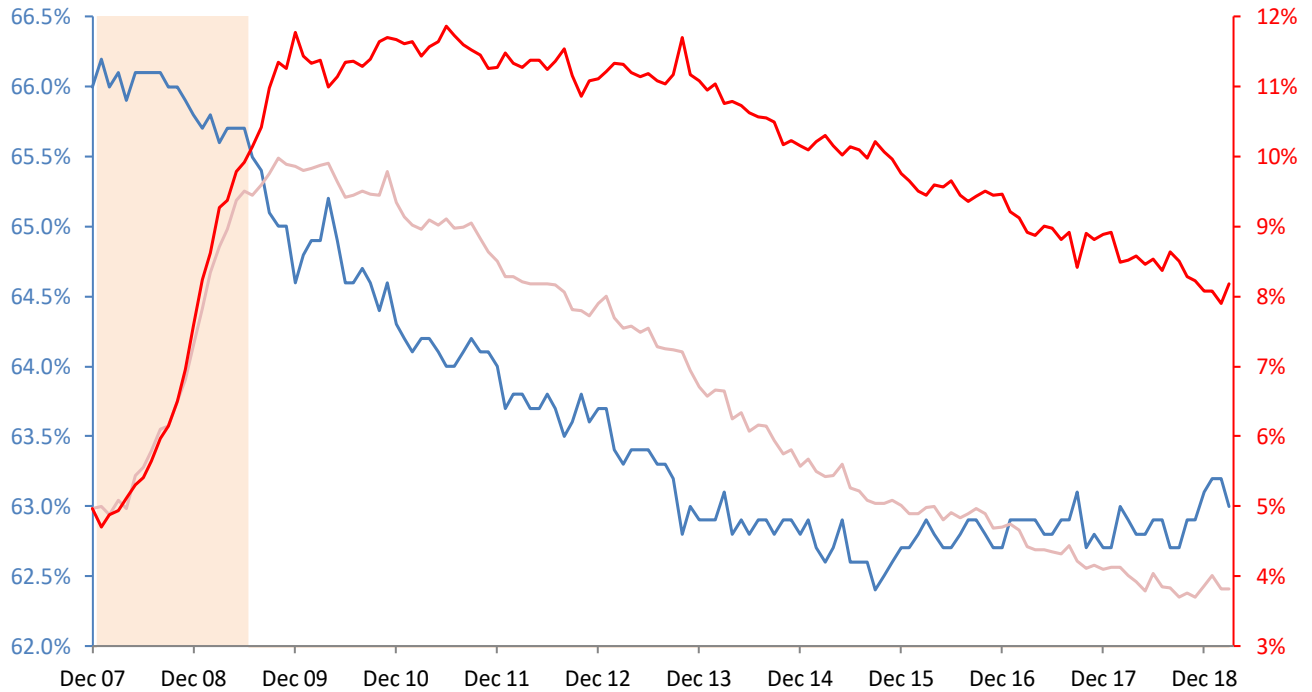
Income inflation adjusted to today's USD



Source: BLS Current Population Survey, TrendMacro calculations

Unemployment rate normalized for participation rate December 2007

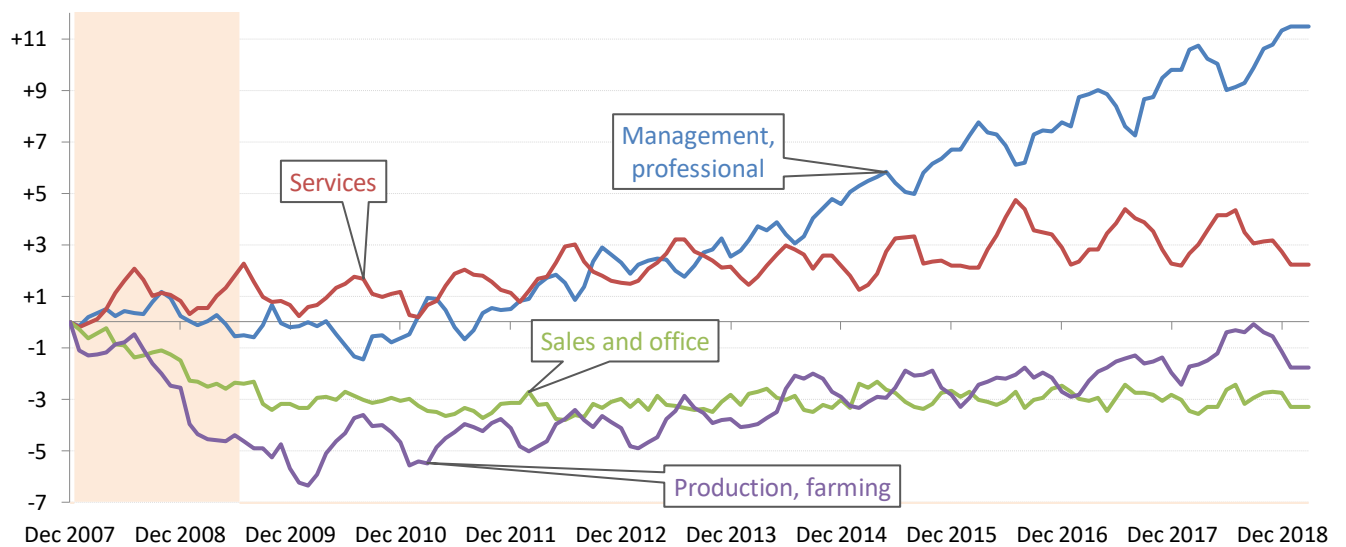
— Participation rate — Headline unemployment rate — Recession



Source: BLS Current Population Survey, TrendMacro calculations

Winner and losers in the Not So Great Expansion following the Great Recession

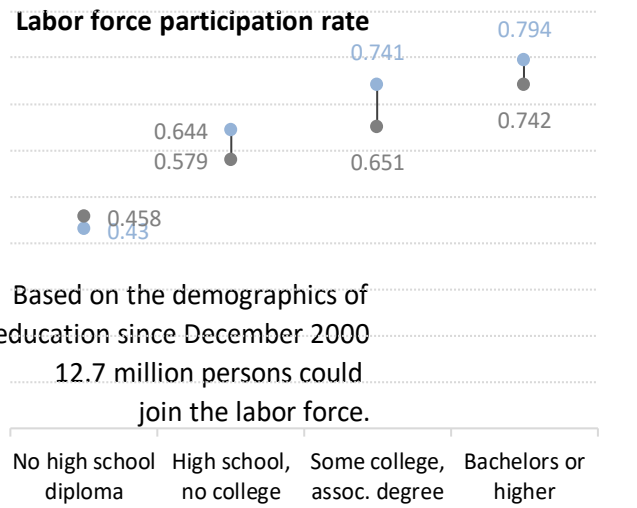
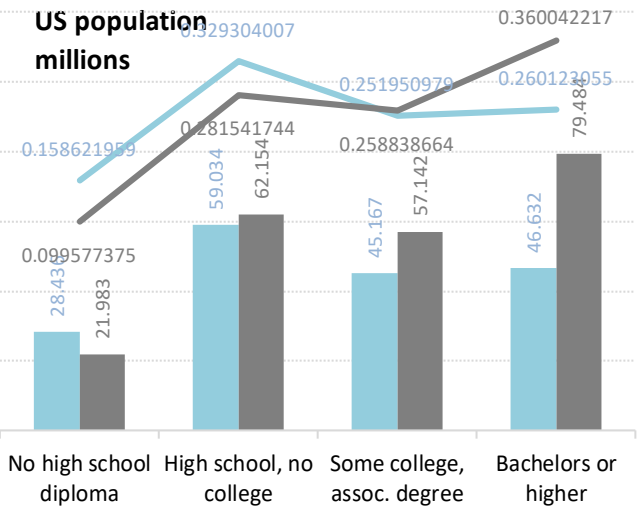
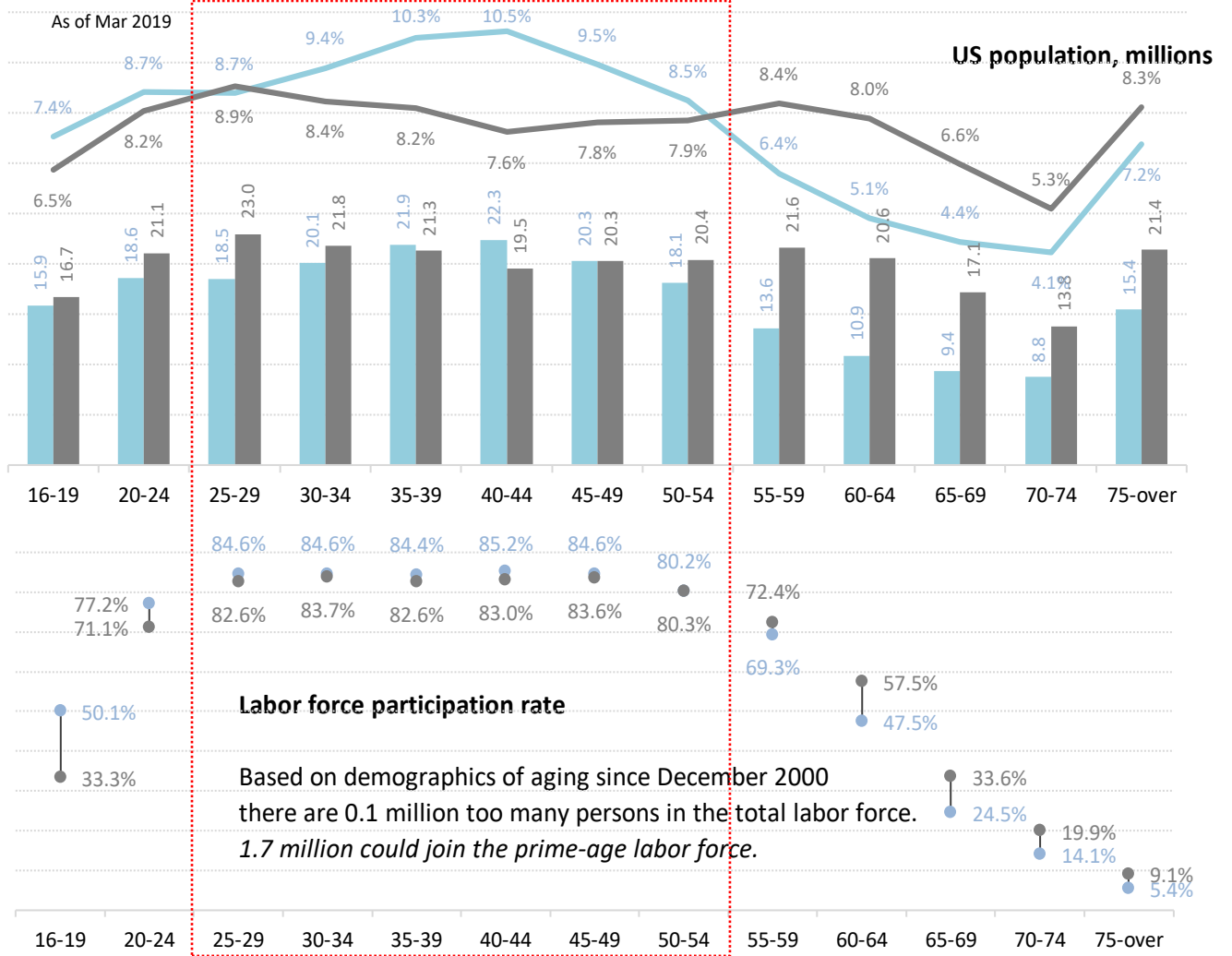
Change in total payrolls from prior business cycle peak, millions



Source: BLS, NBER, TrendMacro calculations

US labor force demographics: fading baby boom and its well-educated echo

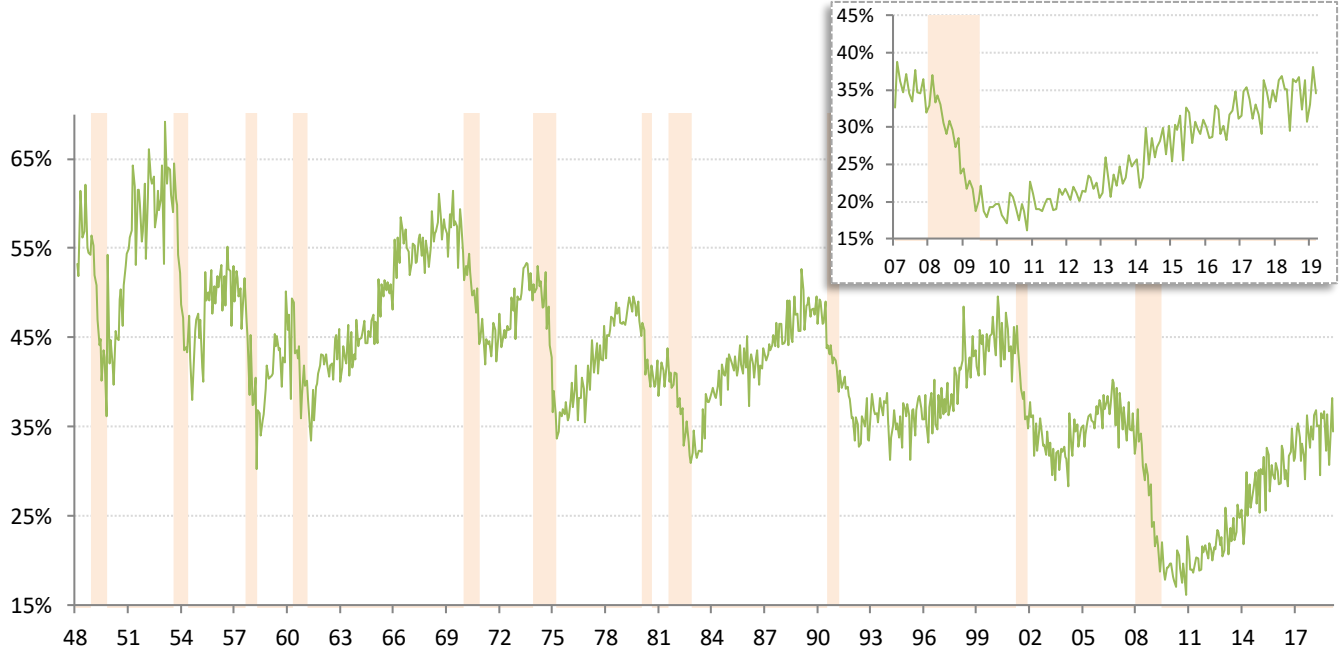
By age and education bracket: ■ Dec 2000, peak in the labor force participation rate ■ Latest □ Prime age



Source: BLS Current Population Survey, TrendMacro calculations

Monthly job-finding probability (the outflow rate from unemployment)

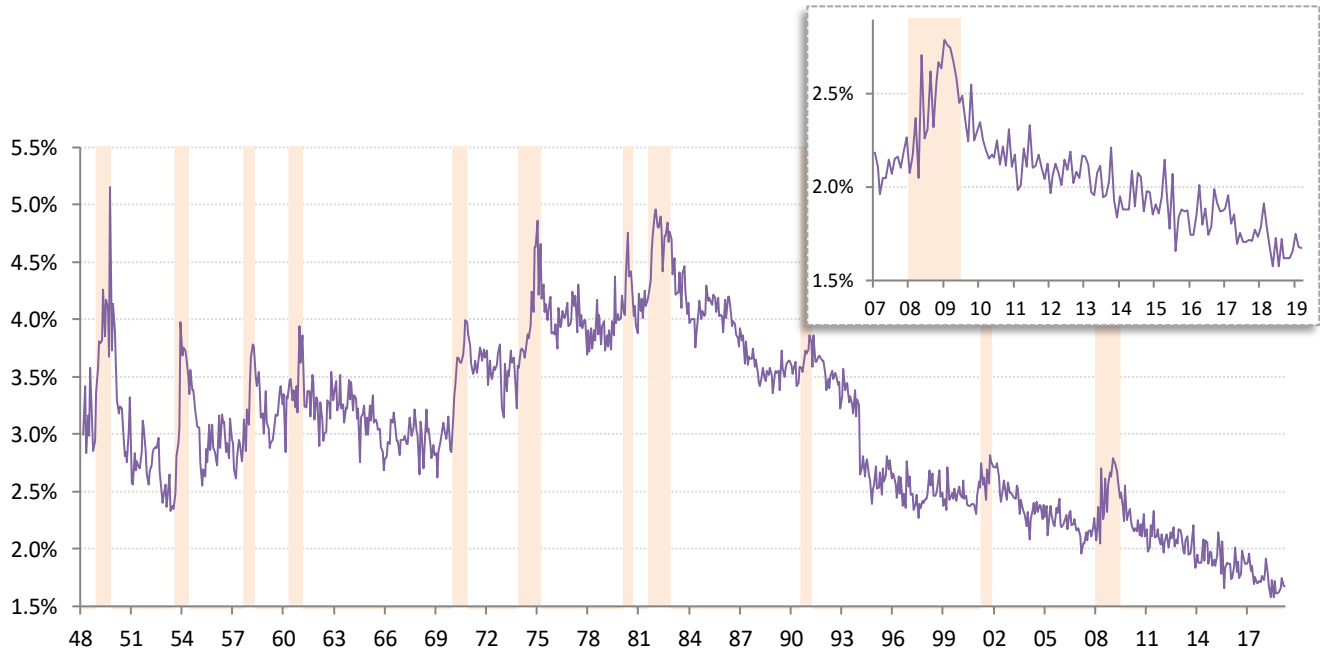
Chance of an unemployed person becoming employed in one month (per [Shimer 2005](#)) Recession



Source: BLS Current Population Survey, TrendMacro calculations

Monthly job-separation probability (the inflow rate to unemployment)

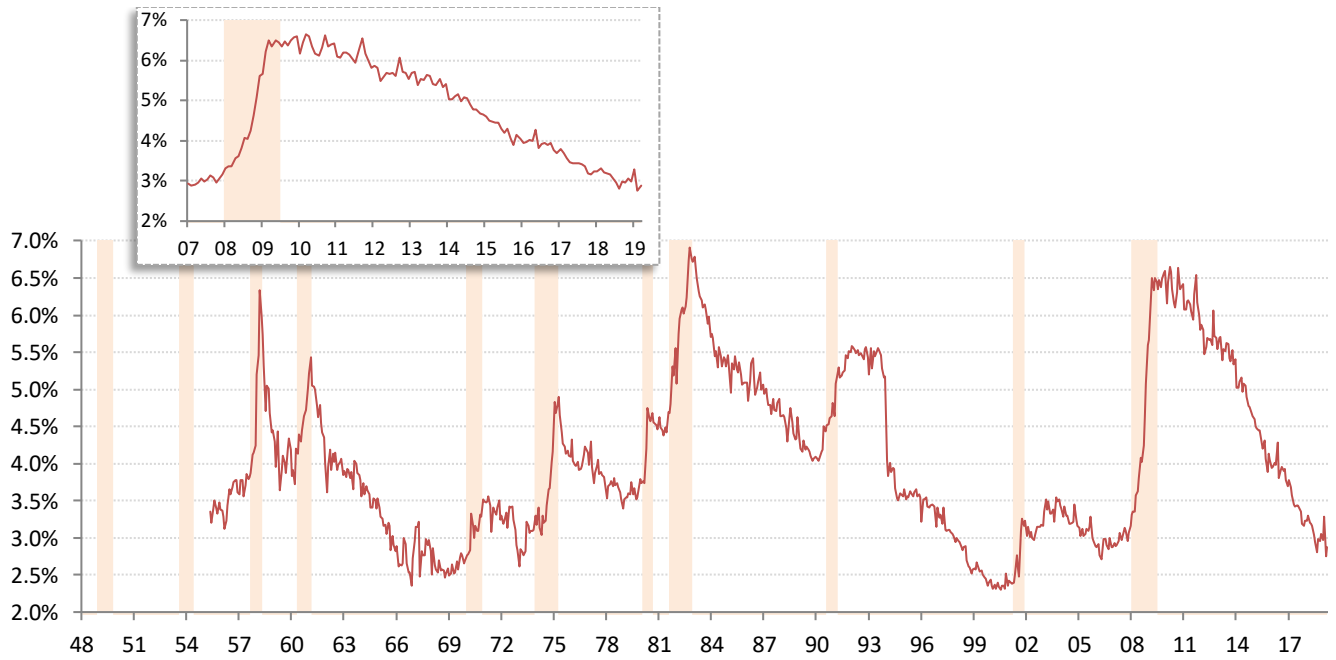
Chance of an employed person becoming unemployed in one month (per [Shimer 2005](#)) Recession



Source: BLS Current Population Survey, TrendMacro calculations

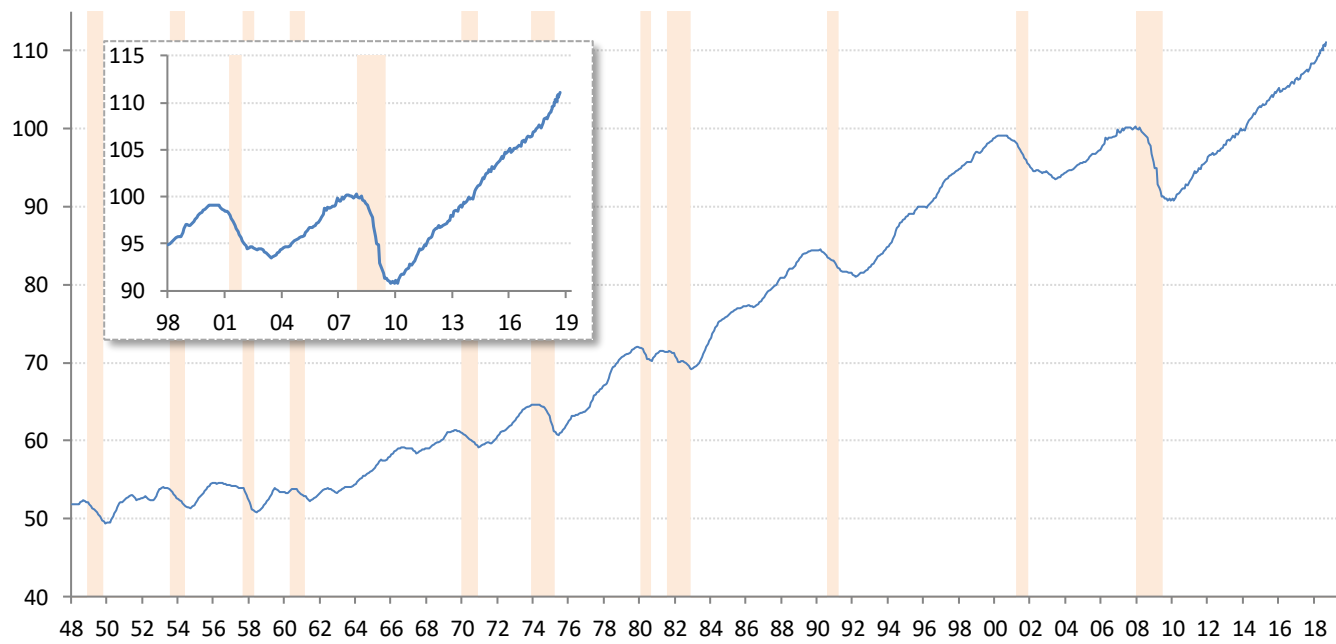
Involuntary part-time workers as percentage of the employed labor force

Persons available for full-time work ■ Recession



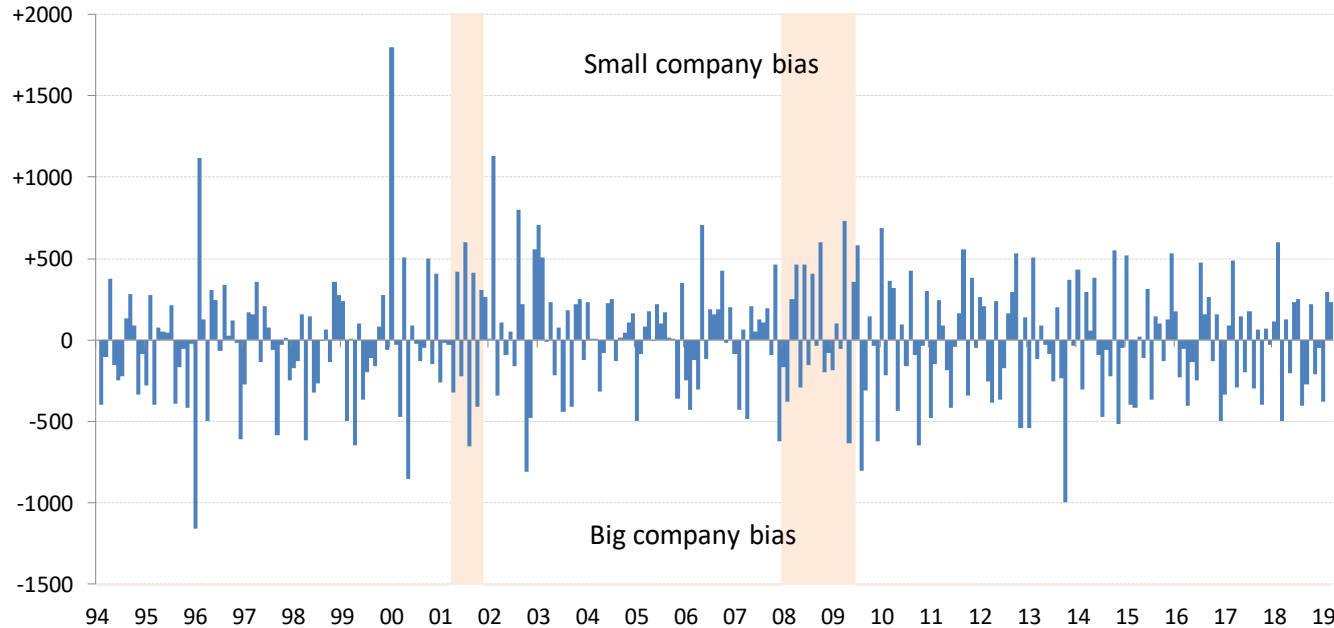
Source: BLS Current Population Survey, TrendMacro calculations

Aggregate weekly private hours-worked index ■ Recession



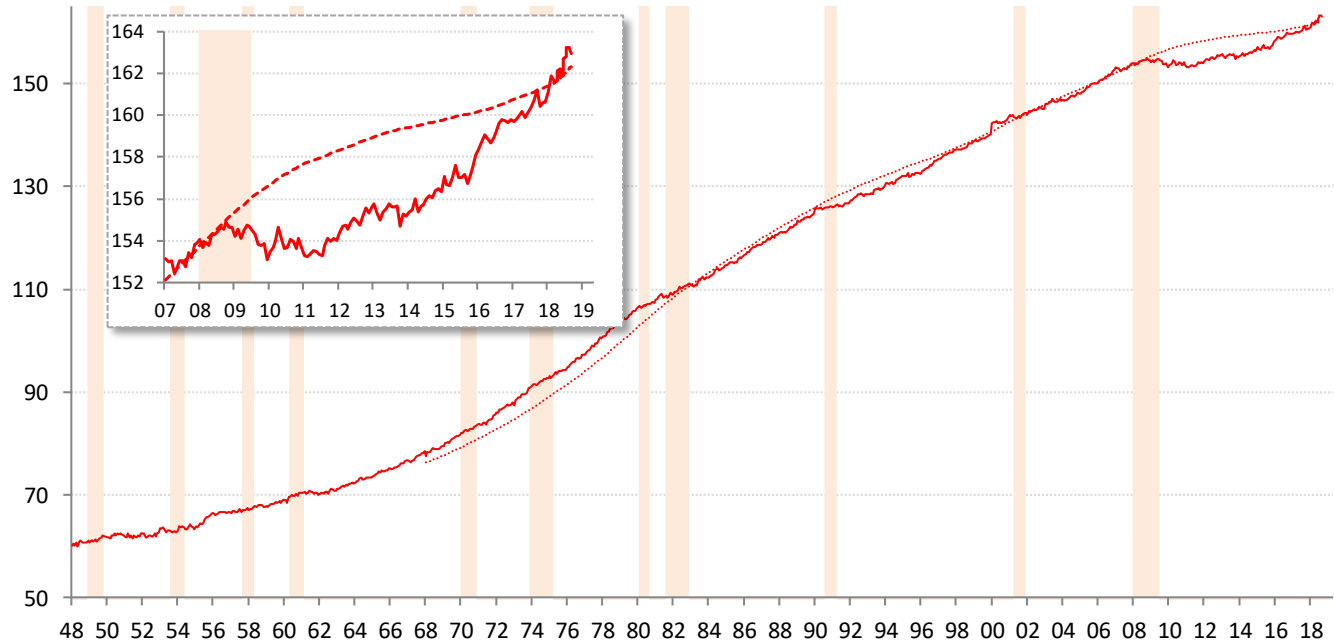
Source: BLS Productivity and Costs (quarterly) and Current Employment Stats (recent monthly), TrendMacro calcs

Difference in employment change: "household" minus "payroll" surveys ■ Recession



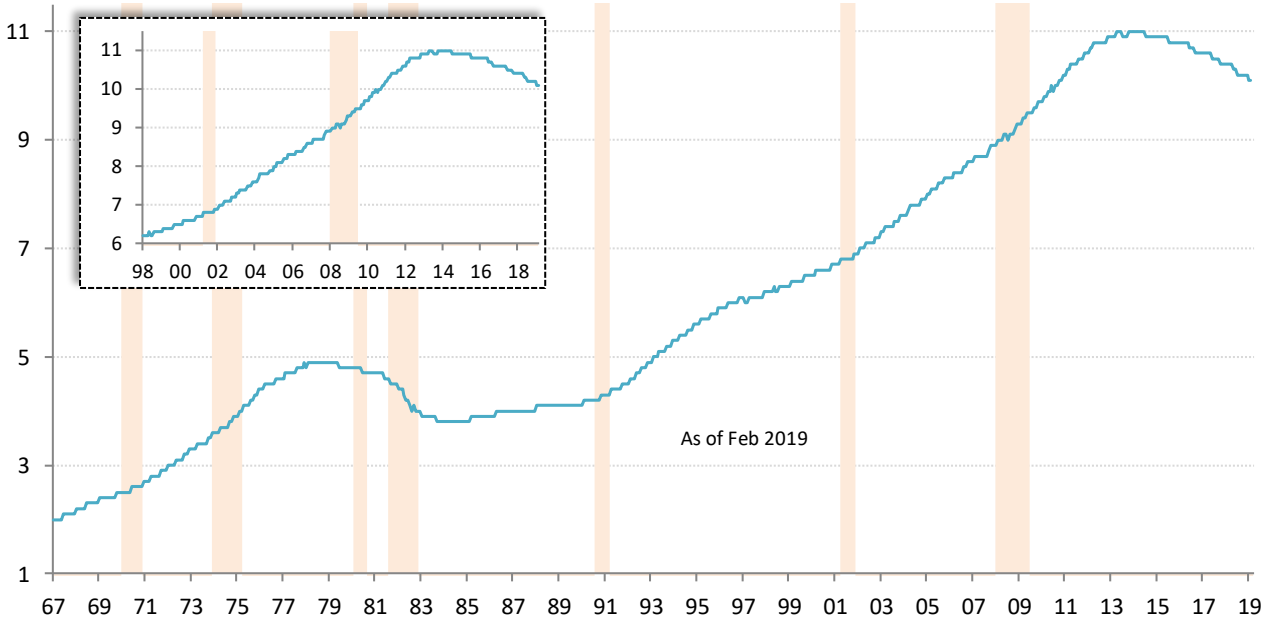
Source: BLS Current Population Survey and Current Employment Statistics, TrendMacro calculations

Civilian labor force versus 20-year trend, millions ■ Recession

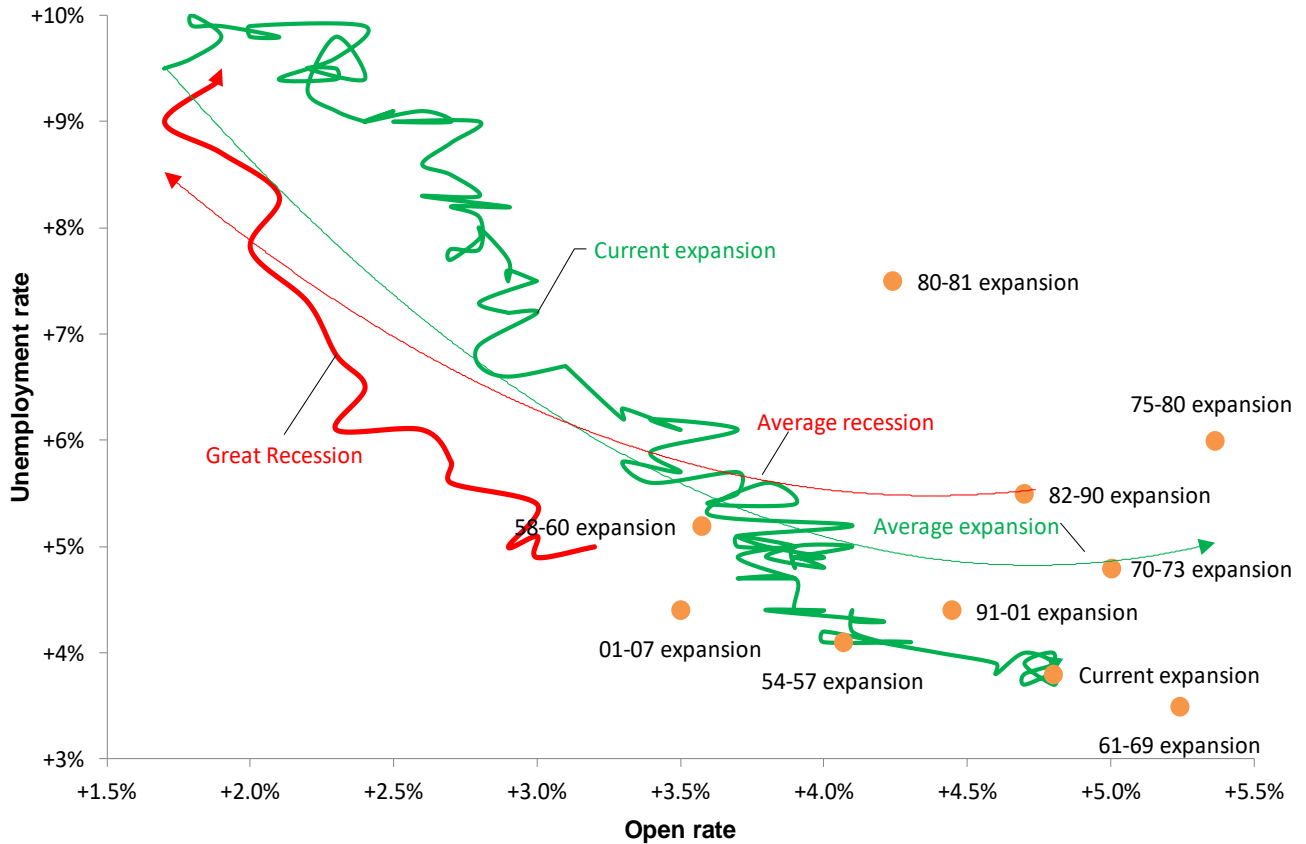


Source: BLS Current Population Survey, TrendMacro calculations

Can the disabled come back to the labor force? Social Security disability recipients, millions



Running out of workers? The Beveridge Curve Cycle relationship between unemployment and job openings



Source: BLS Current Population Survey & JOLTS. Pre-2000:Conference Board normalized per [Valletta \(2005\)](#), TrendMacro calculations