

Data Insights: Consumer Price Index, Producer Price Index

Wednesday, June 14, 2017

Today's CPI data: what you need to know

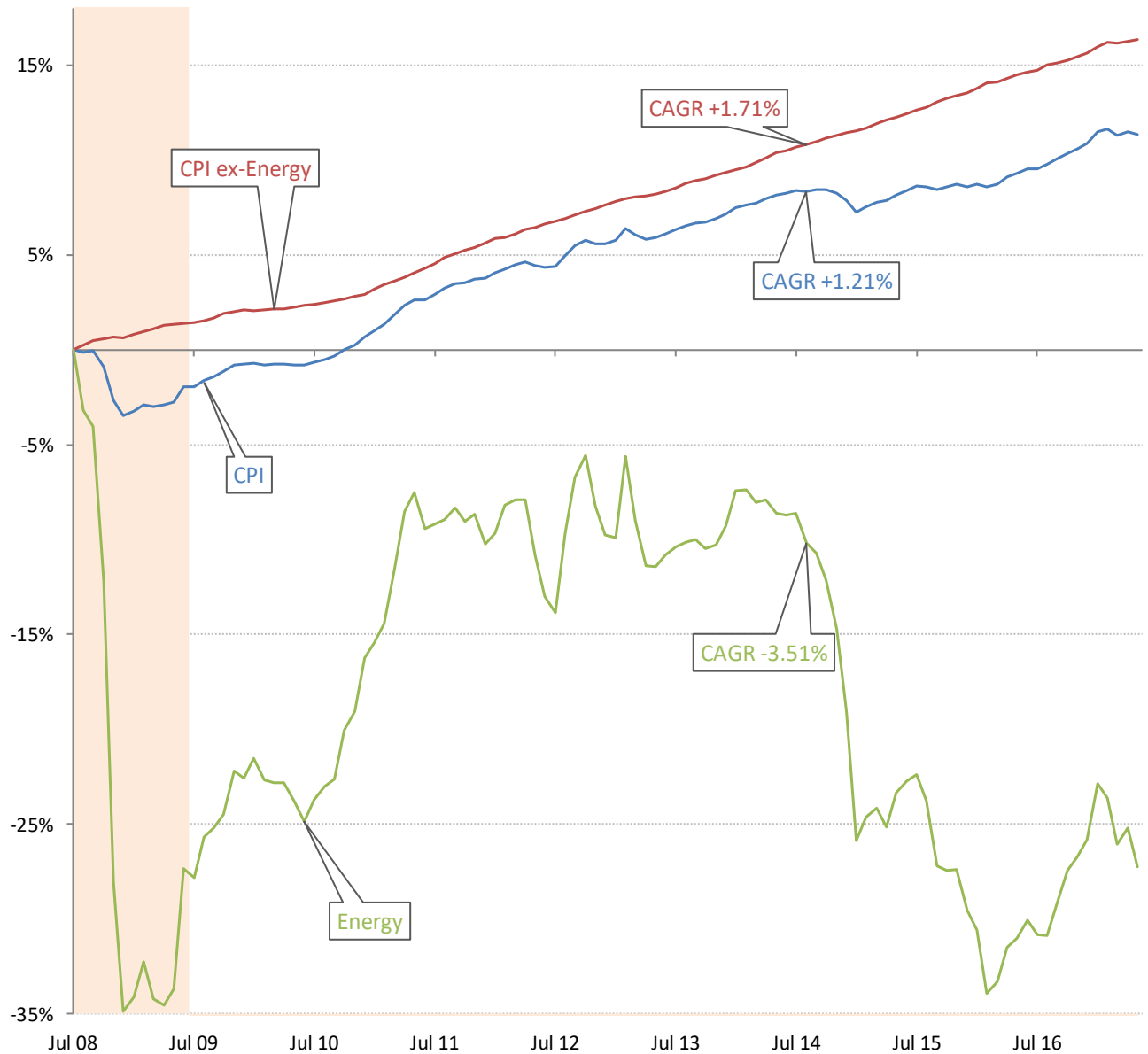
	12-mo YOY	3-mo ann	1-mo ann	12 / 3 / 1-mo	12-mo YOY history
All items	+1.87%	-1.0%	-1.5%		
Core	+1.7%	+0.0%	+0.8%		
OER	+3.3%	+2.4%	+2.4%		
All less OER	+1.6%	-1.4%	-2.5%		
Core less OER	+0.9%	-1.3%	-0.2%		
Energy	+5.4%	-17.7%	-28.2%		
All less energy	+1.6%	+0.5%	+0.9%		
Food	+0.9%	+2.7%	+1.5%		
All less food	+2.0%	-1.6%	-2.1%		
Health care	+2.7%	-0%	-0%		
All less health care	+1.8%	-1.1%	-1.6%		

Source: BLS Consumer Price Index, TrendMacro calculations

For more information contact us:

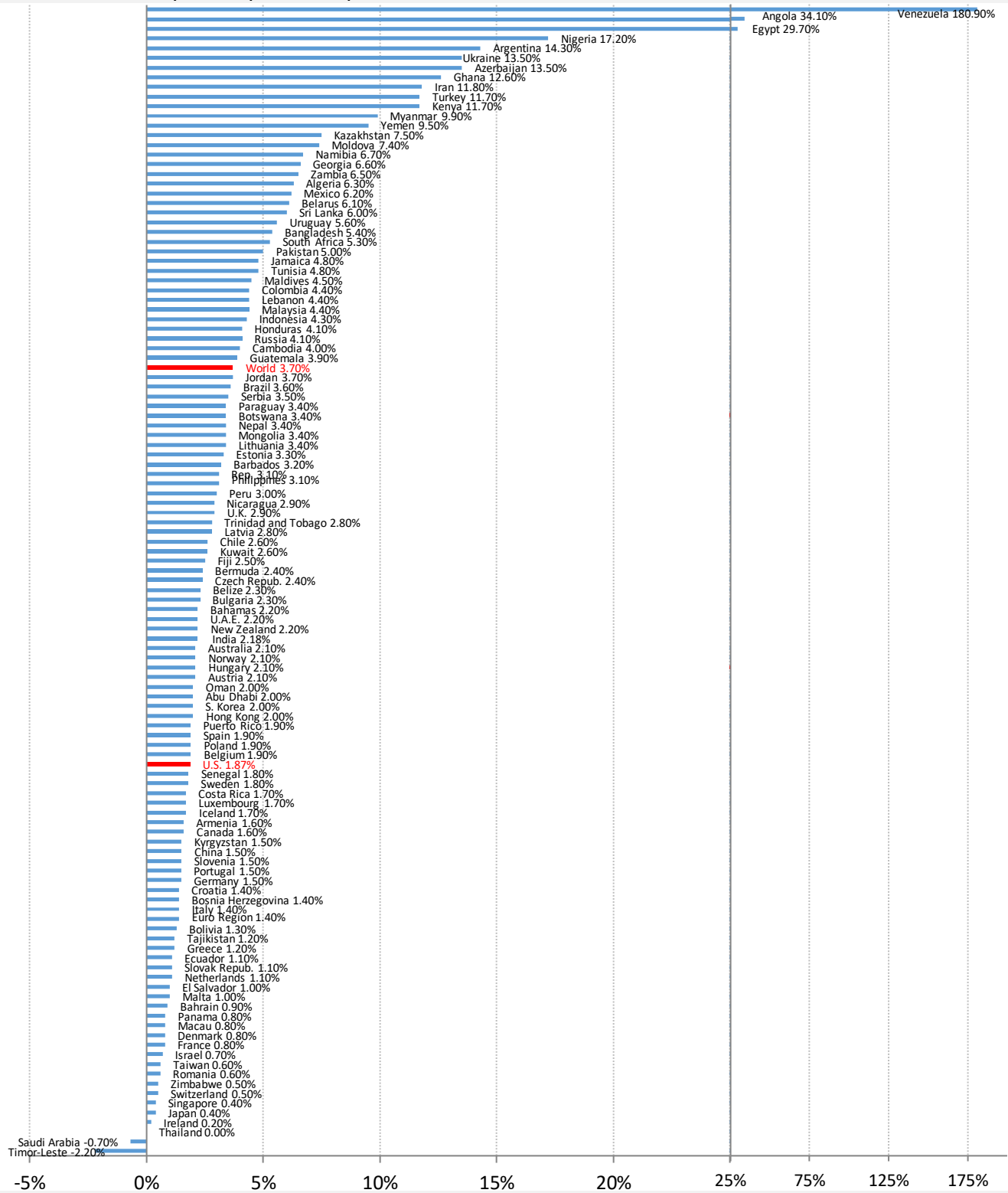
Donald Luskin: 312 273 6766 don@trendmacro.com
 Thomas Demas: 704 552 3625 tdemas@trendmacro.com

The deflation delusion: it's all about oil, and always has been
Cumulative growth of CPI from July 2008, the all-time high oil price



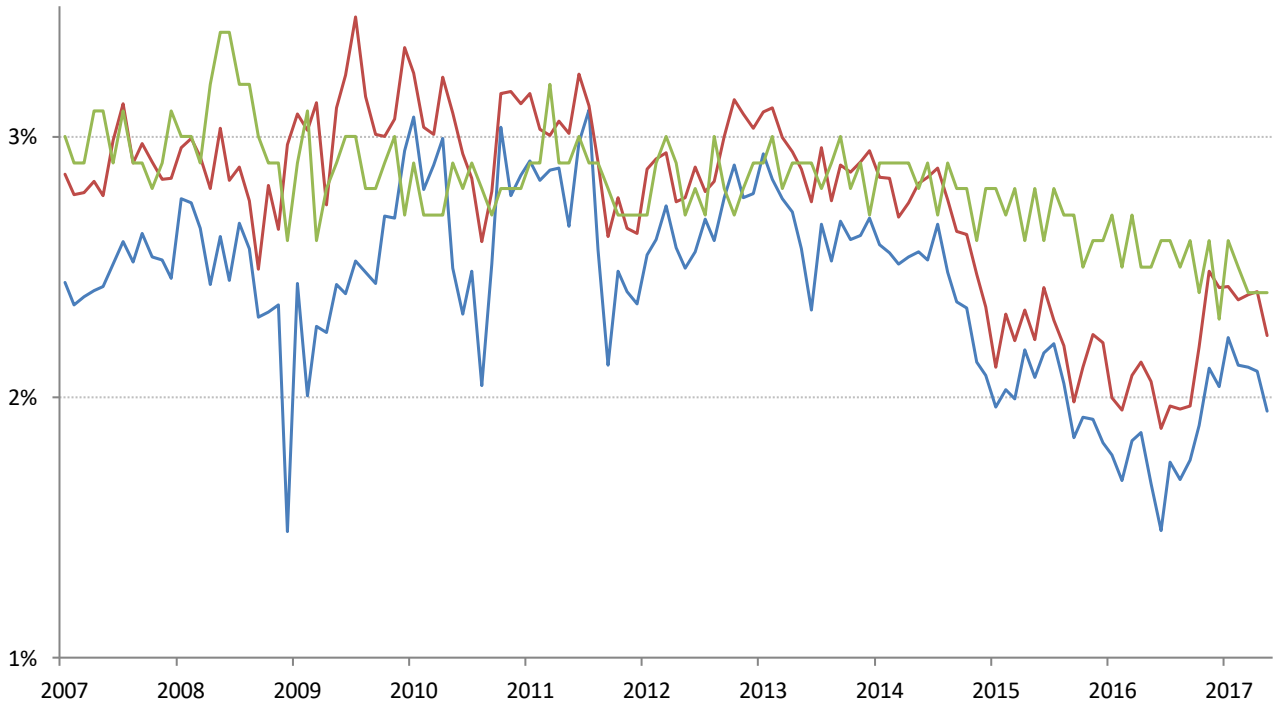
Source: Bloomberg, TrendMacro calculations

World round-up: CPI year-on-year



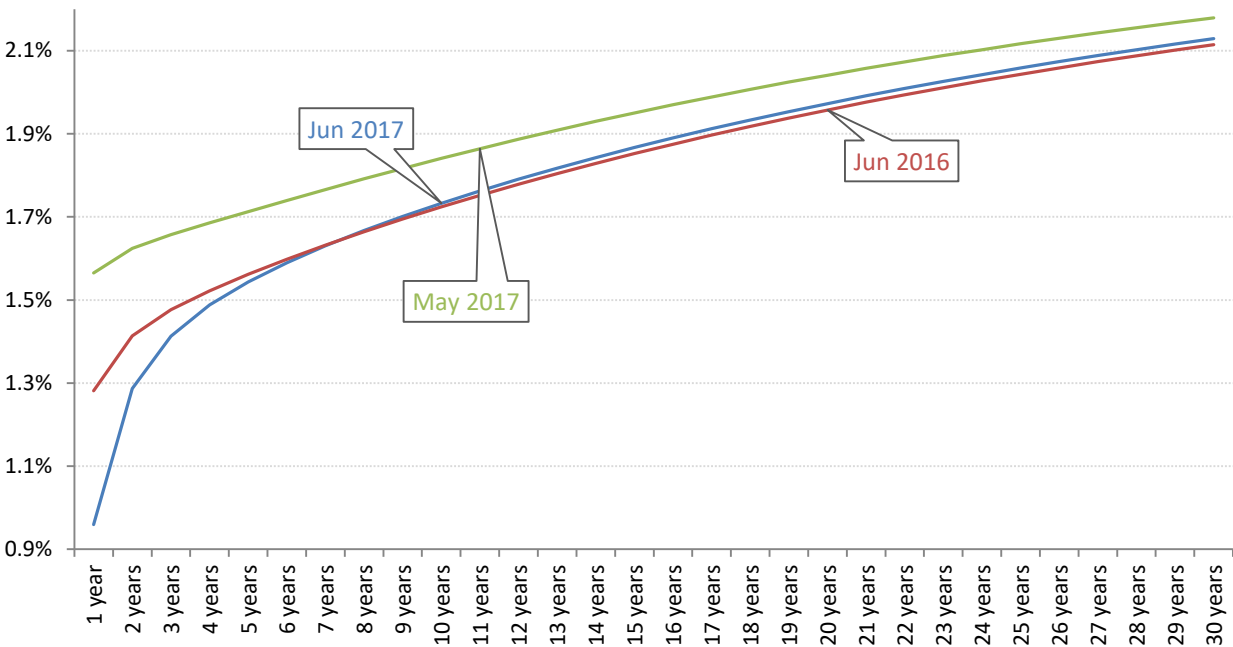
Source: Bloomberg, TrendMacro calculations

Implied 5-year inflation, 5 years forward — TIPS — Swaps — U. Michigan Survey



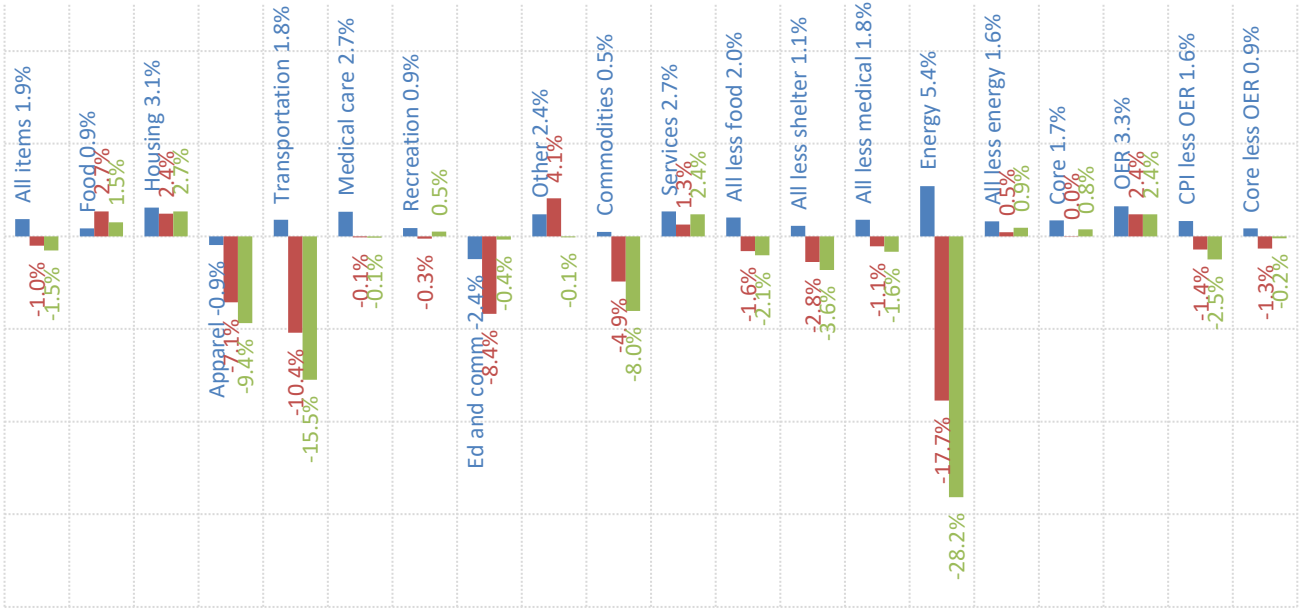
Source: Bloomberg, TrendMacro calculations

Swap-implied inflation yield curve, per annum



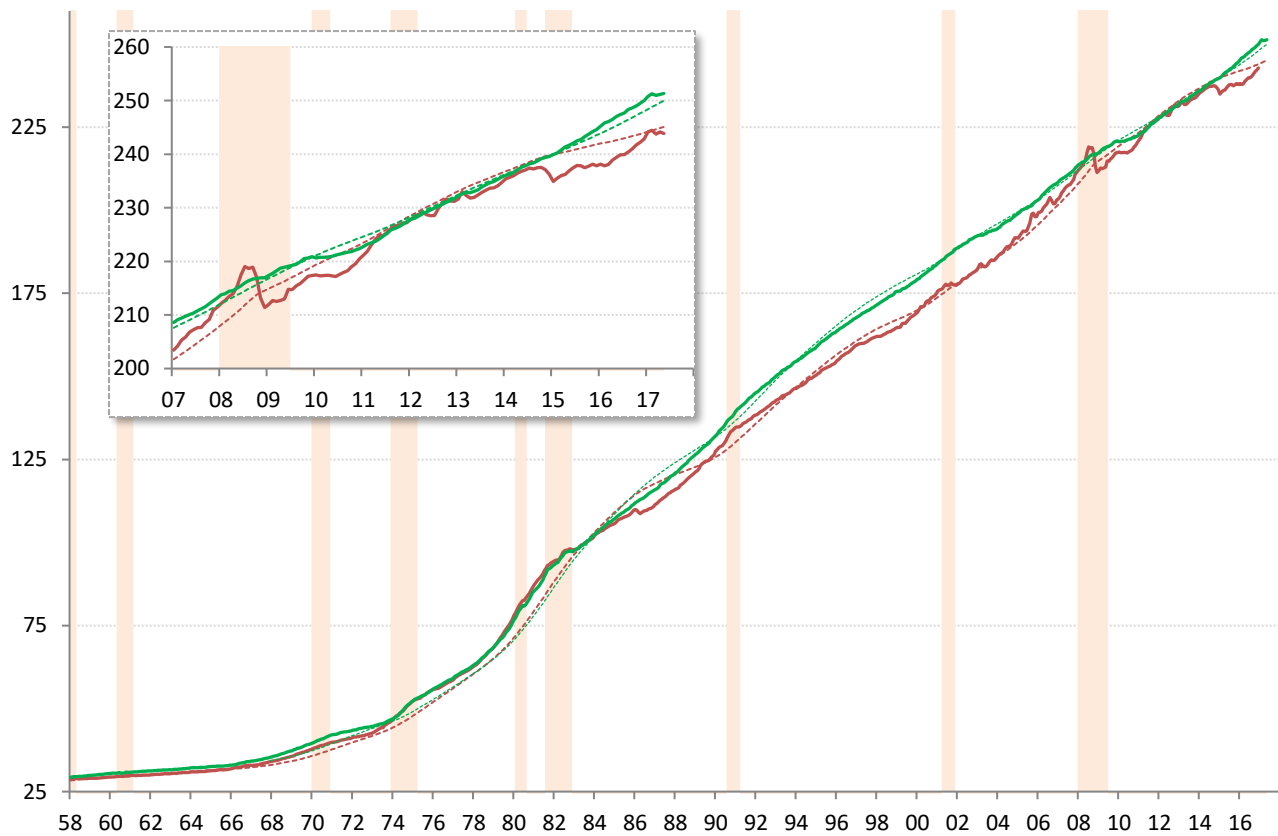
Source: Cleveland Fed, TrendMacro calculations

US CPI inflation by sector (SAAR) ■ 12-month ■ 3-month ■ 1-month



Source: BLS Consumer Price Index, TrendMacro calculations

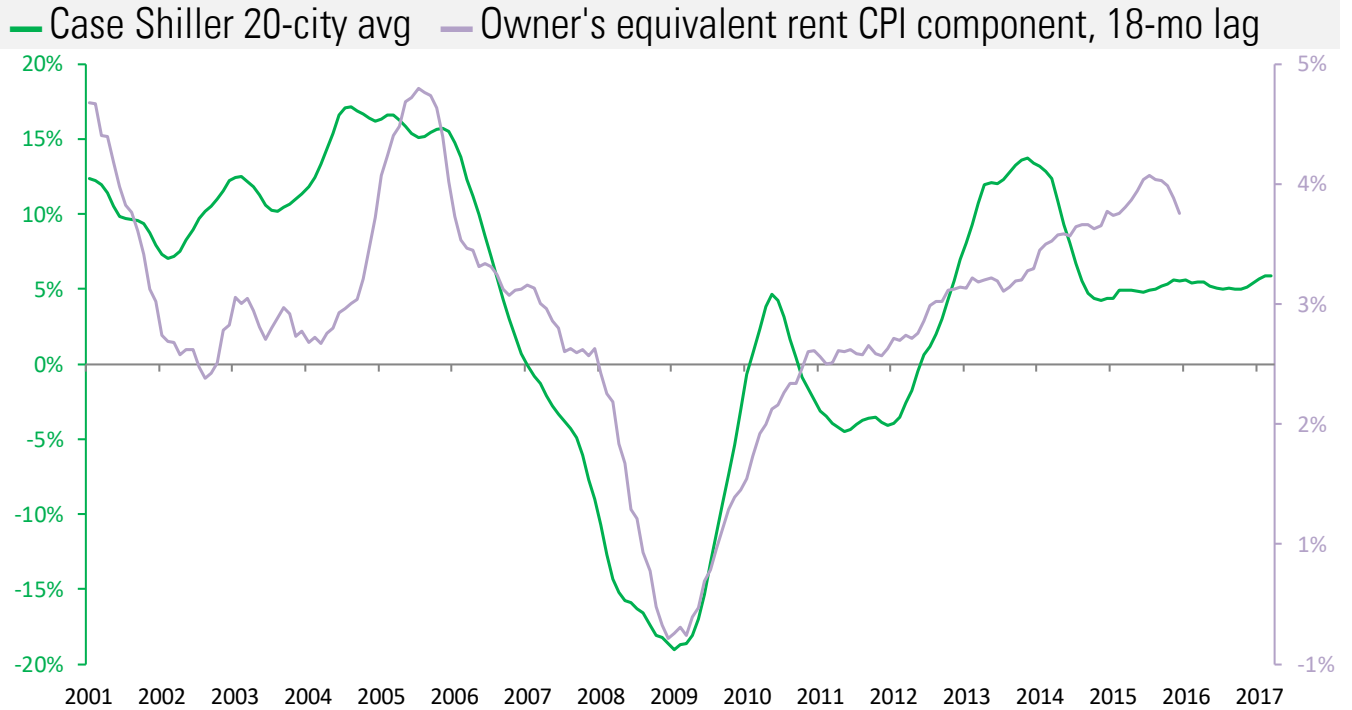
US CPI Core — Level ... 20-year trend ■ Recession



Source: BLS Consumer Price Index, TrendMacro calculations

Housing leads US CPI

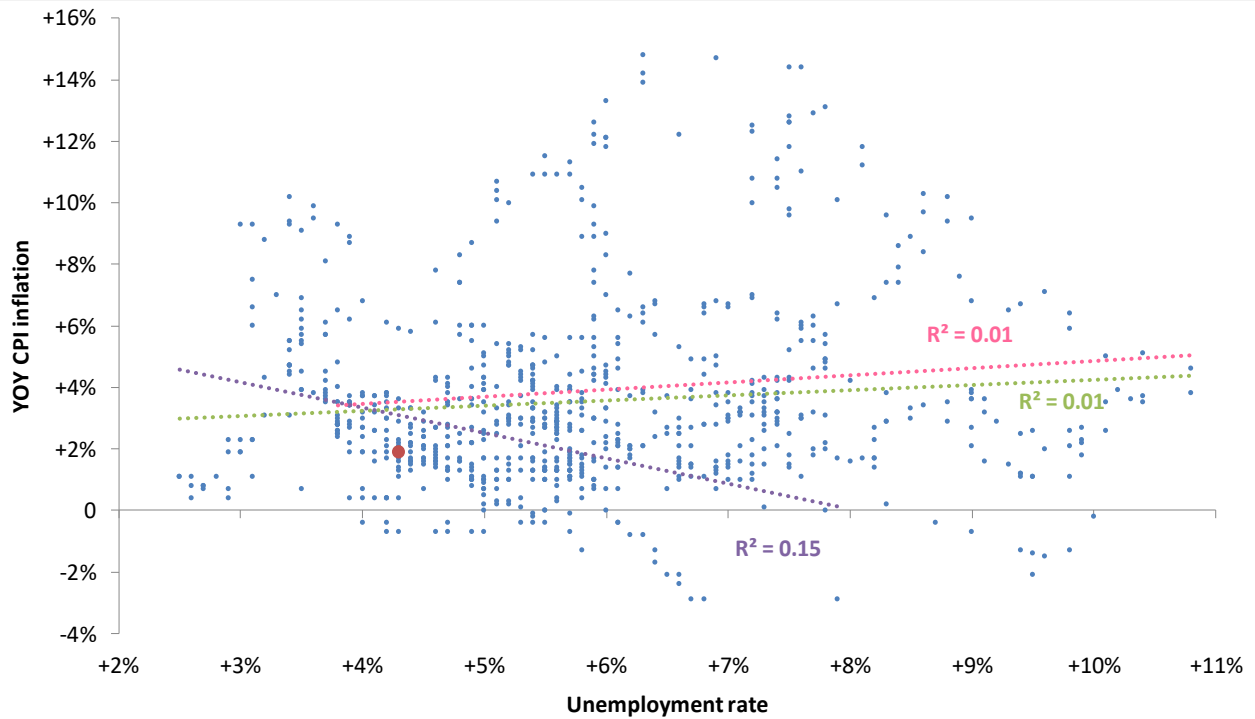
Year-over-year change



Source: BLS, Standard & Poor's Case Shiller, TrendMacro calculations

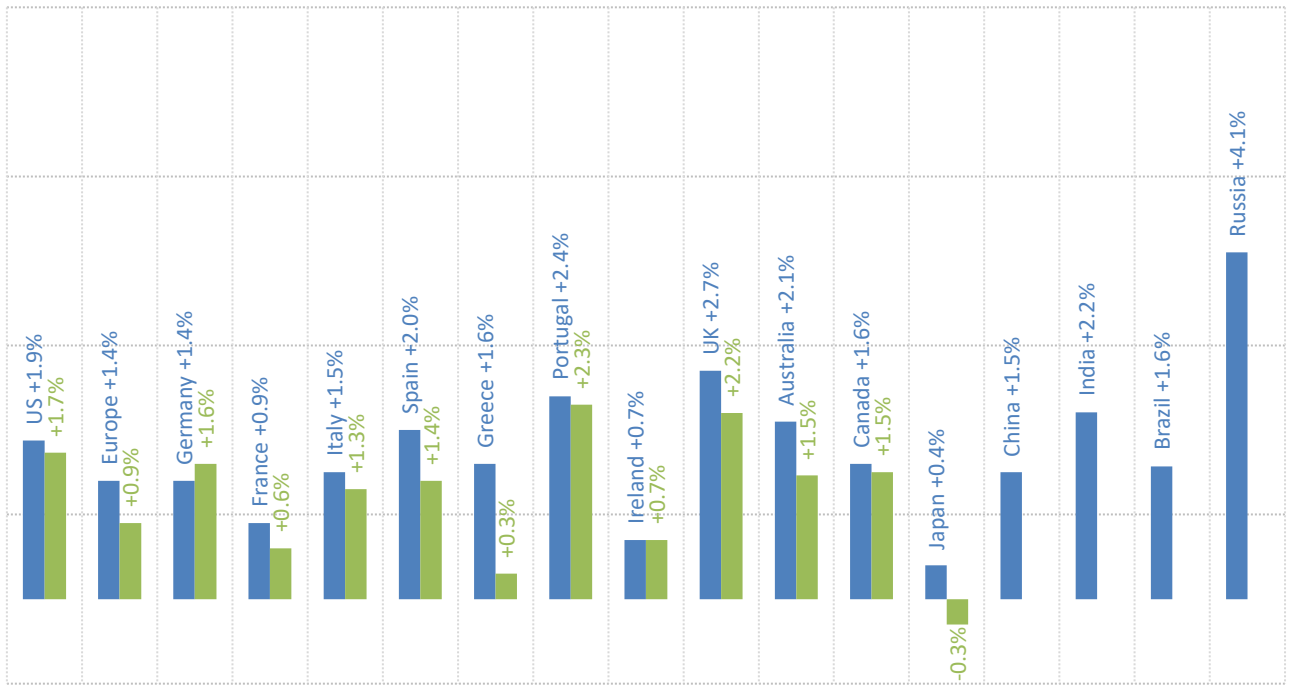
The world is flat: the vanishing Phillips Curve

● Latest Linear trend: ● Pre-74 ● Post-74 ● All



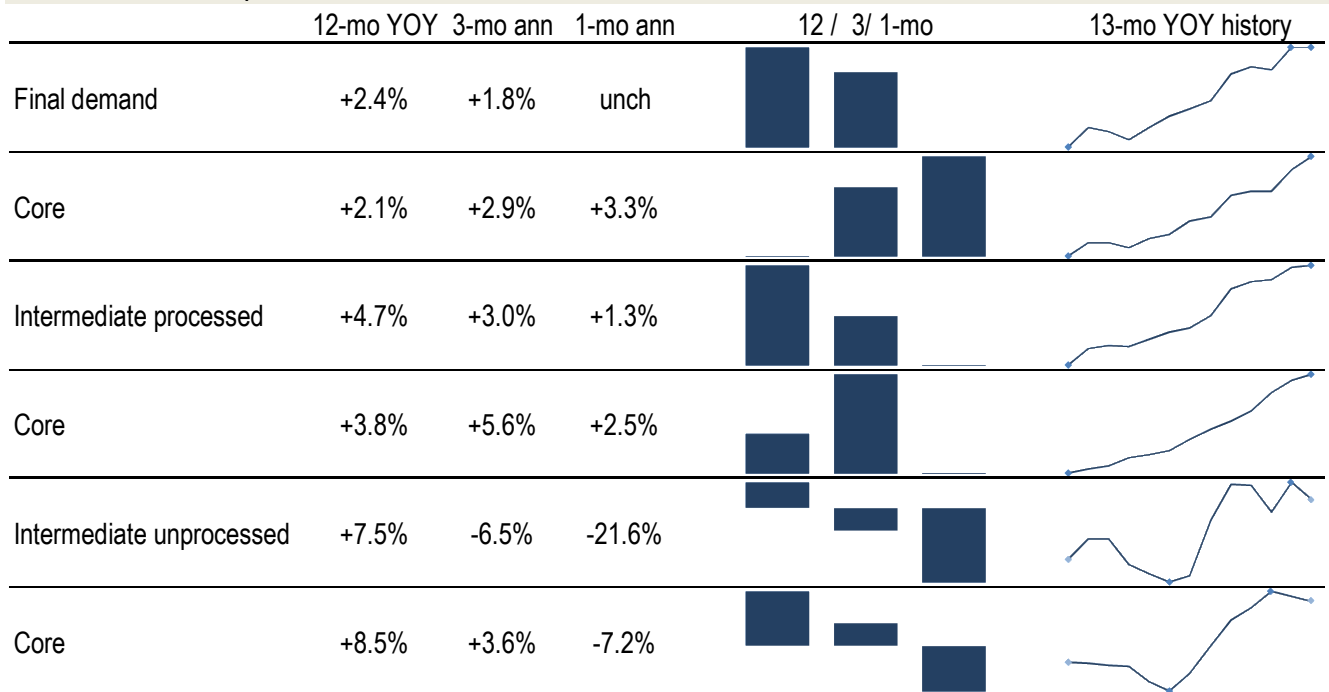
Source: BLS Consumer Price Index, Current Population Survey

Major economies CPI, year on year



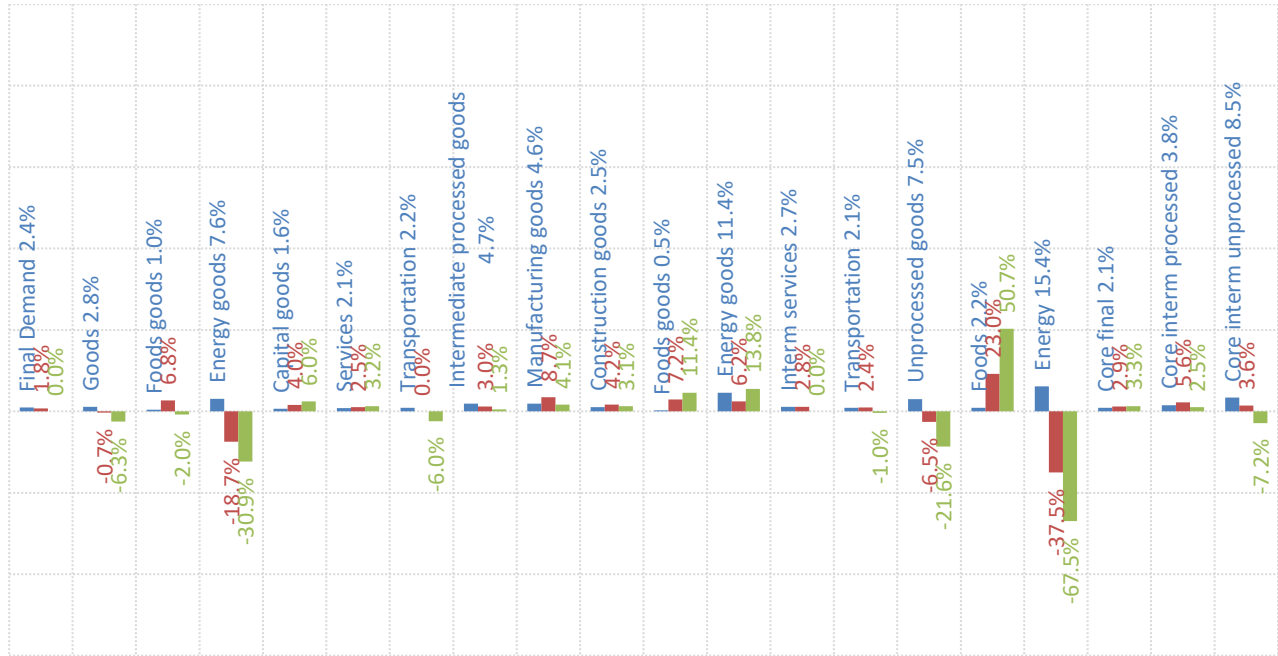
Source: Respective Statistical agencies, TrendMacro calculations

PPI data: what you need to know



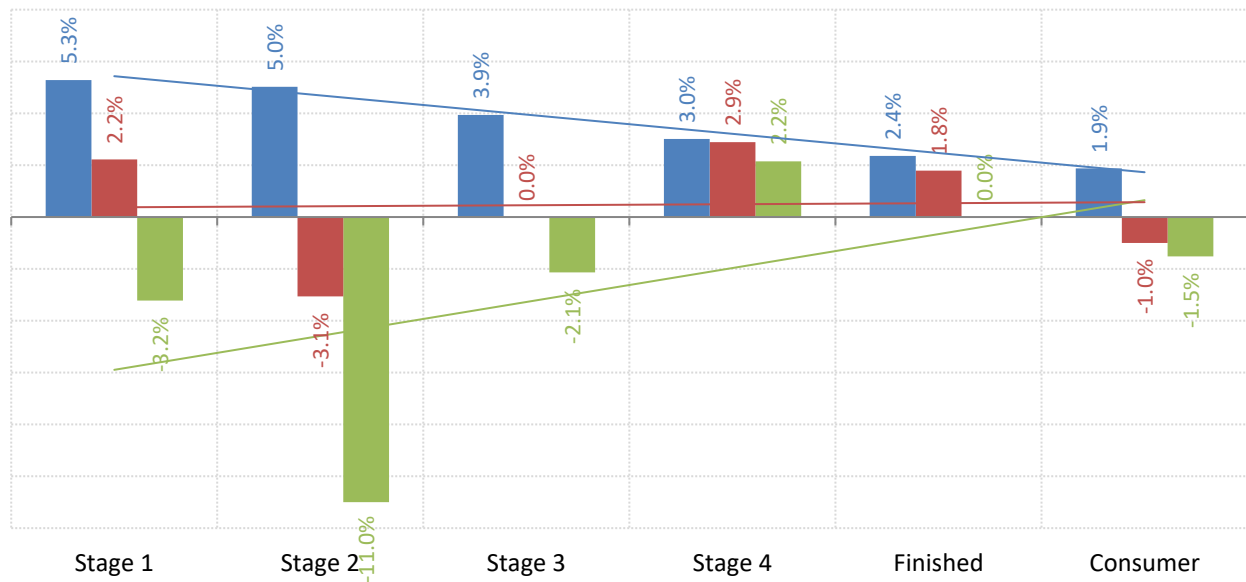
Source: BLS Producer Price Index, TrendMacro calculations

PPI inflation by sector (SAAR) ■ 12-month ■ 3-month ■ 1-month



Source: BLS Producer Price Index, TrendMacro calculations

The inflation pipeline (SAAR) ■ 12-month ■ 3-month ■ 1-month



Source: BLS Producer Price Index and Consumer Price Index, TrendMacro calculations